



Simon Todd Pr.Sci.Nat
 Director & Principle Scientist
 C: 082 3326502
 O: 021 782 0377
 Simon.Todd@3foxes.co.za
 60 Forrest Way
 Glencairn
 7975

Ecological Solutions for
 People & the Environment

Simon Todd
 3Foxes Biodiversity Solutions
 60 Forrest Way
 Glencairn
 7975

Arcus Consultancy Services South Africa (Pty) Ltd
 Office 220 Cube Workspace
 Cnr Long Street and Hans Strijdom Ave
 Cape Town
 8001
 Att: Aneesah Alwie

20 August 2019

RE: Proposed San Kraal/Hartebeesthoek East Split Part 2 Amendment Application

The San Kraal WEF is authorised for a maximum generation capacity of 390 MW, with a total of up to 78 turbines with an individual rating of between 3 and 5 MW, a rotor diameter of 150 m, hub height of 150 m and a blade length of 75 m. The developer would like the project to be split into two projects, San Kraal and Hartebeesthoek East WEFs with the following amendments:

Aspect	Authorised	Proposed Amendment	
		San Kraal	Hartebeesthoek East
Project Name	San Kraal	San Kraal	Hartebeesthoek East
Overall Capacity	390 MW	217 MW	124 MW
Generation capacity per turbine	Between 3MW and 5MW	Up to 6.2MW	Up to 6.2MW
Hub Height	150m	Up to 137m	Up to 137m
Rotor Diameter	150m	Up to 175m	Up to 175m
Number of Turbines	78 turbines	35 turbines	20 turbines
Access	1 Access point	One additional access point	Any new addition access points to be assessed

Arcus is conducting the amendment application on behalf of San Kraal Wind Power (Pty) Ltd, and have requested comment from 3Foxes Biodiversity Solutions regarding the terrestrial ecological impacts associated with the development, in context of the existing authorisation, and with regards to the following:

- i. An assessment of all impacts related to the proposed change;
- ii. Advantages and disadvantages associated with the proposed change;
- iii. Measures to ensure avoidance, management and mitigation of impacts associated with such proposed change; and
- iv. Any changes to the EMPr.

Assessed and Revised Impacts

A summary of the originally assessed ecological impacts associated with the San Kraal development, as authorised, are provided in the table below for reference. The current amended project description for the combined San Kraal and Hartebeesthoek East turbine layout is also provided. In terms of a comparative assessment of the approved layout and the current amended layout, consisting of the two projects, these are considered equivalent and there are no differences in impact associated with the proposed change. The original extent of new access roads is estimated at 52.7 km, and the combined length of the access roads required on the new amended layout consisting of two facilities, is 57.6 km. As such, there is an increase of less than 10% in the total extent of roads required. Furthermore, the larger turbines are expected to require somewhat larger hard stands and laydown areas, with the result that the footprint of each turbine could potentially increase. However, the total number of turbines would decrease from 78 to 55, with the result that this is likely to offset any increase in the required footprint and the total extent of habitat loss, therefore impacts resulting from the turbines would remain similar. There may be a slight increase in the total footprint of the development as a result of the amendment equivalent to less than 10% of the assessed footprint. The assessed impacts are considered robust and conservatively assessed, with the result that the increase is not substantive and would not increase any of the assessed impacts to a higher significance. As such, there are no changes in the assessed impacts associated with the split of the San Kraal project into the two projects, as proposed.

The summary assessment for the San Kraal Wind Energy Facility, before and after mitigation, for the original 78 turbine layout and the amended turbine layout consisting of both the San Kraal and Hartebeesthoek East Facilities.

	Original San Kraal with 78 Turbine		Amendment with San Kraal split into San Kraal with 35 turbines and Hartebeesthoek with 20 turbines (55 turbines total)	
Phase & Impact	Before Mitigation	After Mitigation	Before Mitigation	After Mitigation
Planning & Construction Phase Impacts				
Impacts on vegetation and listed plant species	High	Medium	High	Medium
Faunal impacts due to construction activities	Medium	Medium	Medium	Medium
Operational Phase Impacts				
Faunal impacts due to operational activities	Medium	Low	Medium	Low
Increased alien plant invasion risk	Medium	Low	Medium	Low
Increased erosion risk during operation	High	Low	High	Low
Impact on CBAs	High	Medium	High	Medium
Decommissioning				

Faunal impacts due to decommissioning activities	Medium	Low	Medium	Low
Increased alien plant invasion risk after decommissioning	Medium	Low	Medium	Low
Increased erosion risk following decommissioning	Medium	Low	Medium	Low
Cumulative Impacts				
Cumulative impacts on habitat loss and future ability to meet conservation targets.	Medium	Medium	Medium	Medium

The distribution of turbines across the site would remain similar. The sensitivity map of the original approved layout is illustrated below in Figure 1 and the amendment with the facility split into two, is illustrated in Figure 2. All of the turbines in both cases are restricted to medium sensitivity areas and there are no turbines in areas considered unsuitable for development.

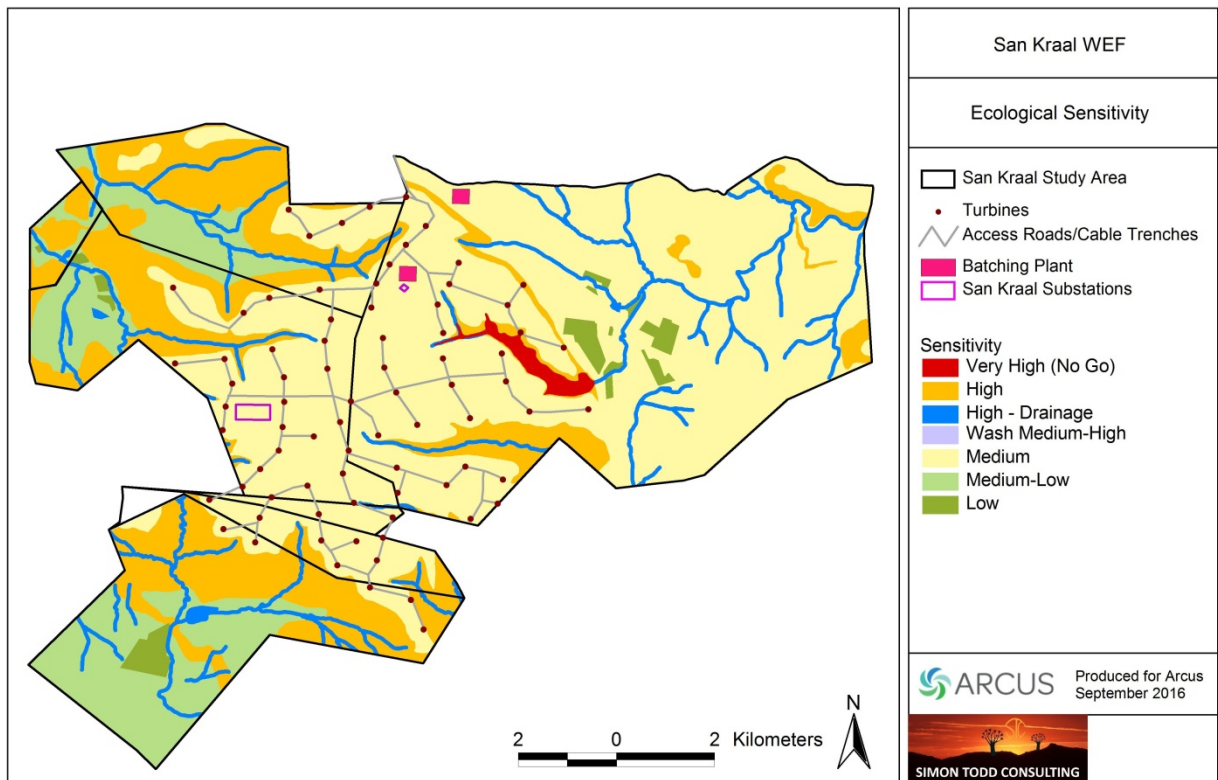


Figure 1. The original authorised San Kraal layout as assessed in the original ecological study.

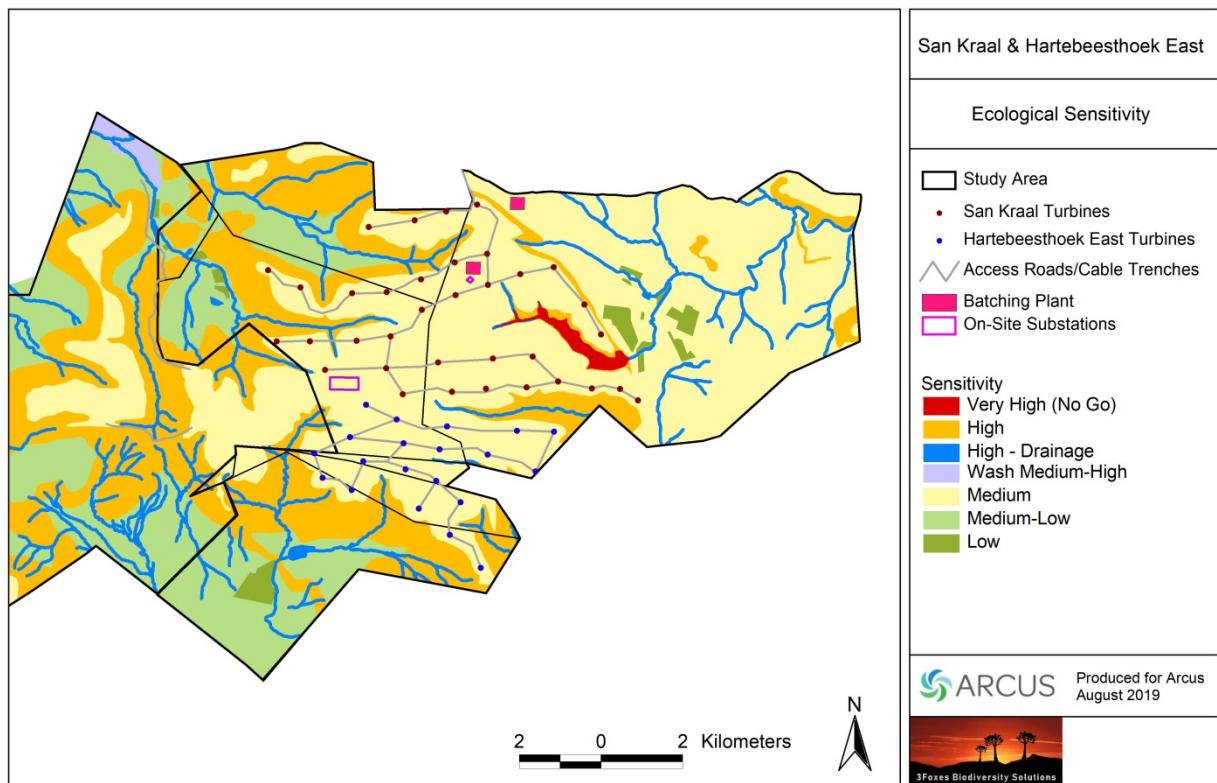


Figure 2. The amended layout for San Kraal and Hartebeesthoek as provided for the current assessment. There are no turbines in high sensitivity areas and the overall distribution of turbines is similar to the original San Kraal Layout, as depicted in Figure 1.

In terms of impact on CBAs, the original layout had a total of 8 turbines within CBAs, whereas under the amended layout, only 5 turbines are within the CBA. As such, it can be seen that the impact of the amendment on CBAs would be similar or lower than the original approved layout. The lower number of turbines in the CBA is seen as a positive, albeit minor improvement of the amendment over the original layout with regards to potential impact on CBAs. As such, no increase in impacts on CBAs associated with the amendment can be expected.

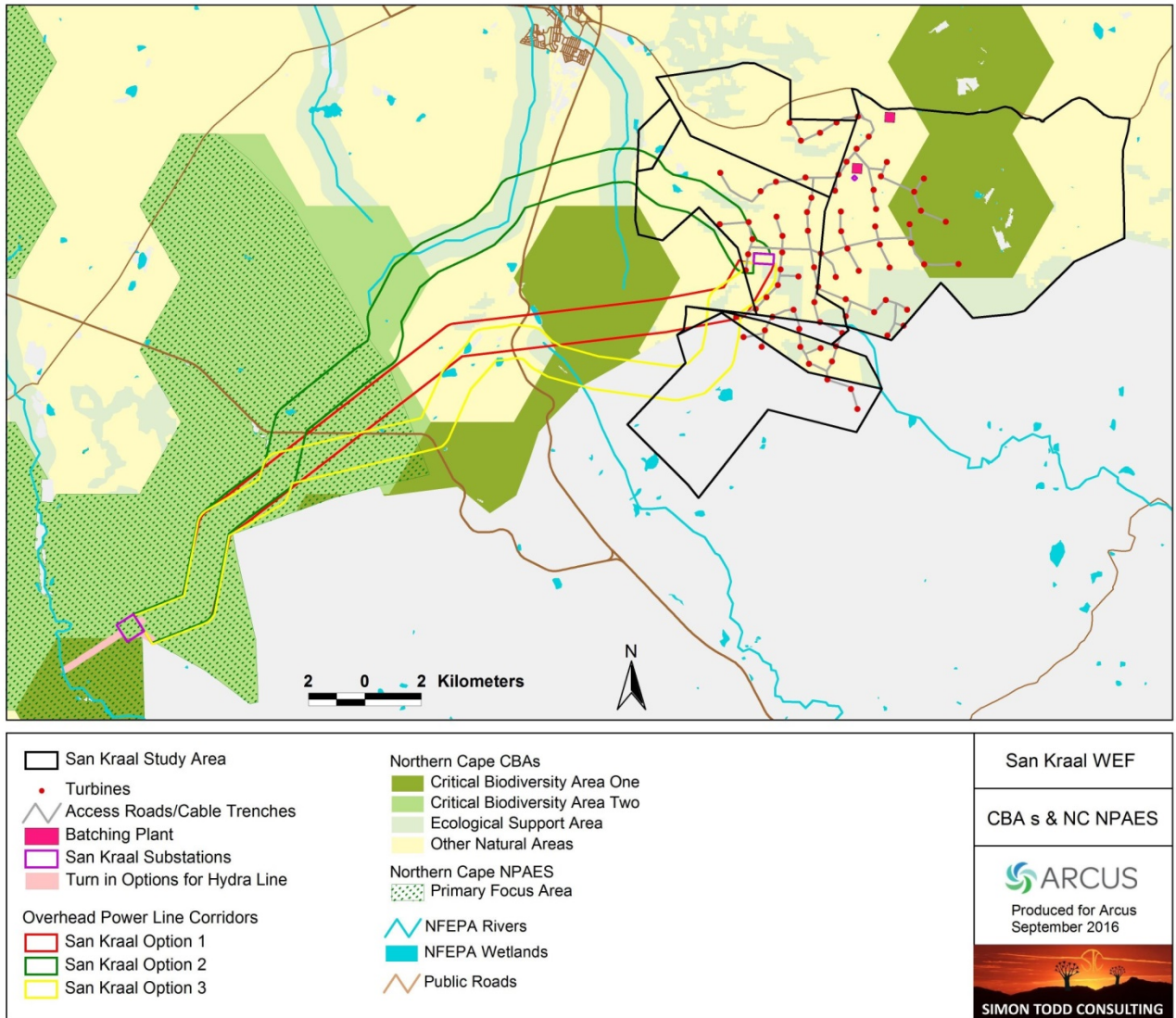


Figure 3. Extract of the Northern Cape Critical Biodiversity Areas map for the original approved layout. There are no CBAs in the Eastern Cape section of the study area. There are 8 turbines within CBAs under this layout.

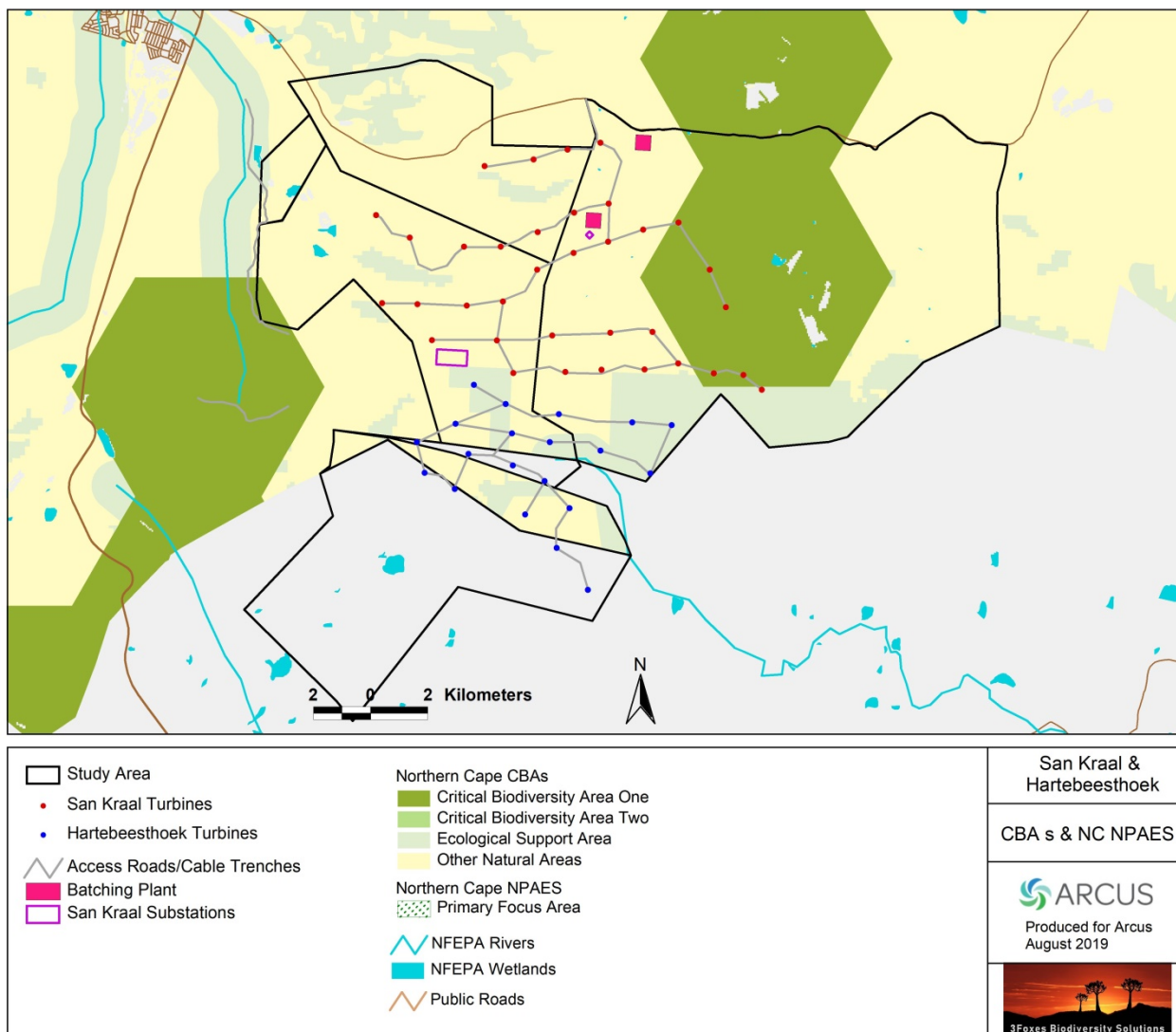


Figure 4. Extract of the Northern Cape Critical Biodiversity Areas map for the amended layout. There are 5 turbines in CBAs under the amended layout.

Cumulative Impact

As the overall footprint of the amended layout consisting of the San Kraal and Hartebeesthoek facilities would be similar to the original approved San Kraal facility, an increase in cumulative impacts associated with the amendment is not expected. In principle, the split would require each facility to win preferred bidder status for the whole development to be built. It is potentially less likely that the full development would be built. The likelihood that the cumulative impacts associated with the split would be realized has declined compared to the original single San Kraal facility. However, as this is speculative, it is assumed that both facilities would be built and this is compared to the original single San Kraal development. Furthermore, there is also a proposed split of the adjacent Phezukomoya facility into the Phezukomoya and Hartebeesthoek West facilities. As the total footprint of this split would also be similar to the original assessed impact, an increase in local cumulative impacts associated with the split of the two original facilities into four facilities would not occur. Under the provided scenarios, cumulative impacts associated with the split San Kraal – Hartebeesthoek facility are considered equivalent to the original San Kraal development and no changes in cumulative impacts can therefore be expected.

Additional Mitigation Measures & Changes to the EMPr

No additional or changed mitigation or avoidance measures in addition to those specified in the original EIA specialist study (dated August 2016) are recommended.

Conclusions & Summary Findings

- The current amendment application compares the impact of the original San Kraal WEF consisting of 78 turbines, with the combined impact associated with the San Kraal Split facility of 35 turbines and the Hartebeesthoek East facility of 20 turbines. The assessed impacts for each scenario are similar, and there are no significant differences in impact between the authorised 78 turbine facility and the proposed amended consisting of 55 turbines, split between two facilities within the same development area as the original San Kraal facility.
- From an ecological perspective the changes associated with the amendment are not seen as increasing the impact associated with the development. In addition, cumulative impacts associated with the amendment would be similar to the assessed impacts and are considered acceptable.
- The original conclusions regarding the positive acceptability of the development is therefore also upheld for the amendment.
- No additional mitigation or avoidance measures are required for the amended layout.
- Given the above outcome, the San Kraal/Hartebeesthoek Amendment is supported in terms of terrestrial ecology impacts.


Prepared by Simon Todd

20 August 2019



Pr.Sci.Nat
SACNASP 400425/11.

Short CV/Summary of Expertise – Simon Todd

 <p>3Foxes Biodiversity Solutions ECOLOGICAL SPECIALIST SERVICES Assessment/Management/Research</p>	<p>Simon Todd Pr.Sci.Nat Director & Principle Scientist C: 082 3326502 O: 021 782 0377 Simon.Todd@3foxes.co.za 60 Forrest Way Glencairn 7975</p>	<p>Ecological Solutions for People & the Environment</p>
--	---	--

Simon Todd is Director and principal scientist at 3Foxes Biodiversity Solutions Pty Ltd (Reg. 2016/467883/07) and has over 20 years of experience in biodiversity measurement, management and assessment. He has provided specialist ecological input on more than 300 different developments distributed widely across the country, with extensive experience in wind and solar projects. Larger recent national or regional projects include input on the Wind and Solar SEA (REDZ) as well as the Eskom Grid Infrastructure (EGI) SEA and Karoo Shale Gas SEA. He is on the National Vegetation Map Committee as representative for the Nama and Succulent Karoo. Simon Todd is a recognised ecological expert and is a past chairman of the Arid-Zone Ecology Forum. Simon Todd is registered with the South African Council for Natural Scientific Professions (No. 400425/11).

Abbreviated CV:

- Profession: Independent Ecological Consultant - Pr.Sci.Nat 400425/11
- Specialisation: Plant & Animal Ecology
- Years of Experience: 22 Years

Skills & Primary Competencies

- Research & description of ecological patterns & processes in Nama Karoo, Succulent Karoo, Thicket, Arid Grassland, Fynbos and Savannah Ecosystems.
- Ecological Impacts of land use on biodiversity
- Vegetation surveys & degradation assessment & mapping
- Long-term vegetation monitoring
- Faunal surveys & assessment.
- GIS & remote sensing

Tertiary Education:

- 1992-1994 – BSc (Botany & Zoology), University of Cape Town
- 1995 – BSc Hons, Cum Laude (Zoology) University of Natal
- 1996-1997- MSc, Cum Laude (Conservation Biology) University of Cape Town

Employment History

- 2010-Present – Self-employed as consultant and sole proprietor of Simon Todd Consulting and then Director of 3Foxes Biodiversity Solutions, which provides ecological specialist services for conservation, research, management and development projects.
- 2007-Present – Senior Scientist (Associate) – Plant Conservation Unit, Department of Botany, University of Cape Town.
- 2004-2007 – Senior Scientist (Contract) – Plant Conservation Unit, Department of Botany, University of Cape Town
- 2000-2004 – Specialist Scientist (Contract) - South African National Biodiversity Institute
- 1997 – 1999 – Research Scientist (Contract) – South African National Biodiversity Institute

General Experience & Expertise

- Conducted a large number of fauna and flora specialist assessments distributed widely across South Africa. Projects have ranged in extent from <50 ha to more than 50 000 ha.
- Widely-recognized arid ecology specialist. Published numerous peer-reviewed scientific publications based on various ecological studies across the country. Past chairman of the Arid Zone Ecology Forum and current executive committee member.
- Extensive experience in the field and exceptional level of technical expertise, particularly with regards to GIS capabilities which is essential with regards to producing high-quality sensitivity maps for use in the design of final project layouts.
- Strong research background which has proved invaluable when working on several ecologically sensitive and potentially controversial sites containing some of the most threatened fauna in South Africa.
- Published numerous research reports as well as two book chapters and a large number of papers in leading scientific journals dealing primarily with human impacts on the vegetation and ecology of the arid and semi-arid parts of South Africa.
- Maintain several long-term vegetation monitoring projects distributed across Namaqualand and the karoo.
- Guest lecturer at two universities and have also served as an external examiner.
- Reviewed papers for more than 10 international ecological journals.
- Past chairman and current committee member of the Arid Zone Ecological Forum.
- SACNASP registered as a Professional Natural Scientist, (Ecology) No. 400425/11.

A selection of recent work is as follows:

Specialist Assessments:

Strategic Environmental Assessments

Co-Author. Chapter 7 - Biodiversity & Ecosystems - Shale Gas SEA. CSIR 2016.

Co-Author. Chapter 1 Scenarios and Activities – Shale Gas SEA. CSIR 2016.

Co-Author – Ecological Chapter – Wind and Solar SEA. CSIR 2014.

Co-Author – Ecological Chapter – Eskom Grid Infrastructure SEA. CSIR 2015.

Contributor – Ecological & Conservation components to SKA SEA. CSIR 2017.

Specialist Fauna and Flora Assessments:

Solar Energy Developments:

Hyperion PV 1-3, near Kathu, Northern Cape. Fauna & Flora EIA Assessment. Savannah Environmental 2019.

Aggeneys Solar PV 1 & 2, Aggeneys, Northern Cape. Fauna & Flora EIA Assessment. Savannah Environmental 2019.

Allepad PV 1-4, Upington, Northern Cape. Fauna & Flora EIA Assessment. Savannah Environmental 2019.

Gaetsewe Solar PV Project, Kathu, Northern Cape. Fauna & Flora EIA Assessment for EIA. Cape EAPrac 2018.

Mogara Solar PV Project, Kathu, Northern Cape. Fauna & Flora EIA Assessment for EIA. Cape EAPrac 2018.

Hotazel Solar, Hotazel, Northern Cape. Fauna & Flora EIA Assessment for EIA. Cape EAPrac 2018.

Sol Invictus PV-1-4 Power Plants, near Aggeneys. Fauna and Flora Assessment. Savannah Environmental 2016.

Illanga Karoshoek CSP 1-5 near Upington. Fauna and Flora Assessment. Savannah Environmental 2016.

Mogobe, Legoko & Kathu 75MW Solar PV Plants, near Kathu, Northern Cape. Fauna and Flora Assessment. Cape EAPrac. 2015.

Wolmarransstad Solar Energy Facility North West Province. Fauna & Flora Specialist Report for EIA. Savannah Environmental 2015

Humansrus Solar PV Energy Facility 1 Near Copperton, Northern Cape: Fauna & Flora Specialist Report for EIA. CapeEAPrac 2015.

Humansrus Solar PV Energy Facility 2 Near Copperton, Northern Cape: Fauna & Flora Specialist Report for EIA. CapeEAPrac 2015.

Dyasonsklip Solar Energy Facility 1 Near Upington, Northern Cape: Fauna & Flora Specialist Report for EIA. CapeEAPrac 2015.

Postmasburg Solar PV Energy Facility 2 and Associated Grid Connection Infrastructure, Postmasburg, Northern Cape. Fauna & Flora Specialist Report for EIA. CapeEAPrac 2015.

Joram Solar Vryheid PV Project, Northern Cape. Fauna & Flora Specialist Report for EIA. CapeEAPrac 2015.

Richtersveld Solar Farm and Associated Grid Connection Infrastructure. Fauna & Flora Specialist Report for EIA. CapeEAPrac 2015.

Re Capital 3 Solar Energy Facility and Associated Grid Connection Infrastructure, Dyason's Klip, Northern Cape. Fauna & Flora Specialist Report for EIA. CapeEAPrac 2013.

Bosjesmansberg Solar Energy Facility East of Copperton, Northern Cape Province. Fauna & Flora Specialist Report for EIA. Savannah Environmental 2013.

Proposed Commercial Concentrated Solar Power Tower Facility and Concentrated Photovoltaic Facility at Van Roois Vley Near Upington. WSP 2012.

Les Marais \ Buitenfontein 5MW Solar Energy Facility in the Free State: Terrestrial Fauna & Flora Specialist Study for Basic Assessment. Savannah Environmental 2013.

Stella Helpmekaar Solar Energy Facility in the North West Province: Terrestrial Fauna & Flora Specialist Study for Basic Assessment. Savannah Environmental 2013.

Wolmaransstad Municipality 5MW Solar Energy Facility in the North West Province: Terrestrial Fauna & Flora Specialist Study for Basic Assessment. Savannah Environmental 2013.

Heuningspruit PV1 and PV2 Solar Energy Facilities Near Koppies, Free State Province: Terrestrial Fauna & Flora Specialist Study for Basic Assessment. Savannah Environmental 2013.

Hibernia PV Solar Energy Facility near Lichtenburg: Terrestrial Fauna & Flora Specialist Study For Basic Assessment. Savannah Environmental 2013.

Steynsrus PV1 And PV2 Solar Energy Facilities: Terrestrial Fauna & Flora Specialist Study for Basic Assessment. Savannah Environmental 2013.

Konkoonsies PV Project, Northern Cape: Fauna & Flora Specialist Report for Impact Assessment. EScience Associates 2012.

Padrooi 13 Photovoltaic Solar Energy Facility, Northern Cape: Fauna & Flora Specialist Report for Impact Assessment. EScience Associates 2012.

Adams Photovoltaic Solar Energy Facility, Northern Cape: Fauna & Flora Specialist Report for Impact Assessment. EScience Associates 2012.

Klein Swart Bast PV Facility, Northern Cape: Fauna & Flora Specialist Report for Impact Assessment. EScience Associates 2012.

Khoi-Sun Solar Facility. Fauna & Flora Specialist Report for Impact Assessment. Cape EAPrac 2012.

Suurwater 62, Boesmanland 75mw Solar Farm, Aggeneys. Fauna & Flora Specialist Report for Impact Assessment. Cape EAPrac 2012.

Karoshhoek Solar Valley Development, Upington: Fauna & Flora Specialist Impact Assessment Report. Savannah Environmental. 2012.

O’Kiep 3 PV Solar Energy Facility on a Site In O’kiep Near Springbok, Northern Cape Province. Fauna & Flora Specialist Report for Basic Assessment. Savannah Environmental 2012.

Photovoltaic Solar Energy Facility on Voëlklip, South of Springbok. Fauna & Flora Specialist Report for Basic Assessment. Savannah Environmental 2012.

Namaqua Photovoltaic Solar Energy Facility on a Site North of Kamieskroon. Fauna & Flora Specialist Report for Basic Assessment. Savannah Environmental 2012.

Inca Graafwater Photovoltaic Solar Energy Facility, Graafwater, Western Cape Province. Faunal Ecology Specialist Report for Impact Assessment. Savannah Environmental 2012.

Aberdeen Solar Facility. Fauna & Flora Specialist Report for Basic Assessment. Specialist Report for Savannah Environmental. 2012.

Venetia Solar Facility. Fauna & Flora Specialist Report for Basic Assessment. Specialist Report for Savannah Environmental. 2012.

Southern Cross Solar Energy Facility: Southern Farm 425. Fauna & Flora Specialist Report for Basic Assessment. Specialist Report for Savannah Environmental. 2012.

Tutwa Solar Energy Facility: Portion 4 of Narries 7. Fauna & Flora Specialist Report for Basic Assessment. Specialist Report for Savannah Environmental. 2012.

Valleydora Photovoltaic Solar Power Plant, Free State. Fauna & Flora Specialist Report. CSIR, 2012.

Reddersburg Solar Facility - Fauna & Flora Specialist Assessment. CSIR, 2012.

Melkvllei Photovoltaic Solar Power Plant. Fauna & Flora Specialist Report for Basic Assessment. Specialist report for ERM. 2012.

Ruinte Photovoltaic Solar Power Plant. Fauna & Flora Specialist Report for Basic Assessment. Specialist report for ERM. 2012.

Genoegsaam Solar Park. Fauna & Flora Specialist Report for Basic Assessment. Specialist report for ERM. 2012.

Genoegsaam Solar Park. Fauna & Flora Specialist EIA Report. Specialist report for ERM. 2012.

Graspan Solar Facility. Fauna & Flora Specialist Report for Impact Assessment. Specialist report for ERM. 2012.

Olyven Kolk Solar Power Plant, Northern Cape: Botanical and Faunal Specialist Assessment. Specialist Report for Environmental Resources Management (ERM). 2011.

Skuitdrift Solar Facility. Fauna & Flora Specialist Report for Basic Assessment. Specialist Report for Cape EAPrac. 2012.

Beaufort West Solar Facility, Erf 7388 - Fauna & Flora Specialist Assessment. Specialist Report for Cape EAPrac. 2012.

Khoi-Sun Solar Facility. Fauna & Flora Specialist Scoping Report. Specialist Report for Cape EAPrac. 2012.

Boesmanland Solar Farm. Fauna & Flora Specialist Scoping Study. Specialist Report for Cape EAPrac. 2012.

Bitterfontein Solar Plant - Fauna & Flora Specialist Assessment. Specialist Report for Cape EAPrac. 2012.

Wind Farm Developments:

Redcap Impofu Wind Farms, East, West & North, Oyster Bay, Eastern Cape. Fauna and Flora EIA process. Aurecon 2018.

Tooverberg Wind Farm, Touwsrivier, Western Cape. Fauna and Flora EIA process. SiVest 2018.

Highlands WEFs, Somerset East, Eastern Cape Province. Fauna & Flora Basic Assessment. Arcus Consulting 2018.

Juno WEF, Strandfontein, Western Cape Province. Fauna and Flora EIA process. Arcus Consulting 2018.

Kay Vley 300MW WEF, Kleinsee, Northern Cape. Fauna and Flora EIA process. CSIR 2018.

Kuruman WEF 1 & 2, Kuruman, Northern Cape. Fauna and Flora EIA process. CSIR 2018.

Paulputs WEF, Pofadder, Northern Cape. Fauna and Flora EIA process. Arcus Consulting 2019.

Kokerboom WEF 1-4, Loeriesfontein, Northern Cape. Fauna and Flora EIA process. Aurecon 2017.

Leeuberg, Ithemba, Xha Boom, Graskoppies & Hartebeest Leegte WEFs, Loerinesfontein, Northern Cape. Fauna and Flora EIA process. SiVest 2017.

Komsberg East and Komsberg West Wind Farms and Associated Grid Connection Infrastructure: Fauna & Flora Specialist Impact Assessment Report. Arcus 2014.

Rietkloof Wind Farm and Associated Grid Connection Infrastructure: Fauna & Flora Specialist Impact Assessment Report. EOH 2016.

Brandvallei Wind Farm and Associated Grid Connection Infrastructure: Fauna & Flora Specialist Impact Assessment Report. EOH 2016.

Gunstfontein Wind Farm and Associated Grid Connection Infrastructure: Fauna & Flora Specialist Impact Assessment Report. Savannah Environmental 2016.

Mainstream South Africa Dwarsrug Wind Energy Facility: Fauna & Flora Specialist Impact Assessment Report. Sivest 2014.

Spitskop Wind Energy Facility near Cookhouse: Fauna & Flora Specialist Study for Impact Assessment. Savannah Environmental 2013.

Roggeveld Wind Energy Facility and Associated Grid Connection Infrastructure: Fauna & Flora Specialist Report for EIA. Savannah Environmental 2013.

Mainstream South Africa Springfontein Wind Energy Facility: Terrestrial Fauna & Flora Specialist Study for EIA. Savannah Environmental 2012.

Environmental Impact Assessment for the Establishment of the Wolseley Wind Farm, Western Cape Province. Fauna & Flora Specialist Report. Arcus Gibb 2012.

Proposed Eskom 300MW Kleinsee Wind Energy Facility. Fauna Specialist Report For Impact Assessment. Savannah Environmental 2012.

Proposed Inca Energy Swellendam Wind Energy Facility: Fauna Specialist Report For Impact Assessment. Savannah Environmental 2012.

Proposed Hartebeest Wind Energy Facility: Fauna & Flora Specialist EIA Report For Impact Assessment. Savannah Environmental 2016.

Terrestrial Ecology Specialist Study for the Proposed Establishment of a Renewable Energy Facility near Sutherland, Western and Northern Cape Provinces. Environmental Resources Management (ERM) 2011.

Roggeveld Wind Farm: Ecological and Biodiversity Assessment: Terrestrial Vertebrate Fauna & Botanical Specialist Study. Specialist Report for Environmental Resources Management (ERM). 2011.

Zen Wind Energy Facility. Fauna & Flora Specialist Impact Assessment Report. Savannah Environmental. 2012.

Proposed Project Blue Wind and Solar Energy Facility, Near Kleinsee. Fauna Specialist Report For Impact Assessment. Savannah Environmental 2012.

Garob Wind Farm: Fauna & Flora Specialist Report for Impact Assessment. Savannah Environmental 2012.

Loeriesfontein Wind Energy Facility – Substation & Grid Connection. Fauna & Flora Specialist Report for Basic Assessment. Savannah Environmental 2012.

Noblesfontein Wind Energy Facility, Victoria West. Ecological Walk-Through Report. Savannah Environmental 2012.

Gouda Wind Energy Facility. Fauna And Flora Walk Through Report. Savannah Environmental 2012.

Klawer Wind Farm: Ecological and Biodiversity Assessment: Terrestrial Vertebrate Fauna & Botanical Specialist Study. Specialist Report for Environmental Resources Management. 2011.

Lambert's Bay Wind Farm: Ecological and Biodiversity Assessment: Terrestrial Vertebrate Fauna & Botanical Specialist Study. Specialist Report for Environmental Resources Management. 2011.

Richtersveld Wind Farm: Ecological and Biodiversity Assessment: Terrestrial Vertebrate Fauna & Botanical Specialist Study. Specialist Report for Environmental Resources Management (ERM). 2011.

Witberg Wind Farm: Ecological and Biodiversity Assessment: Terrestrial Vertebrate Fauna & Botanical Specialist Study. Specialist Report for Environmental Resources Management (ERM). 2011.

Electrical Transmission Infrastructure

Vryheid Grid Strengthening Project, near Swellendam. Nsovo Environmental Consultants. 2016.

Juno-Gromis 400kV Power Line. Ecological Walk-Through study for EMPr. Nsovo Environmental Consultants. 2017.

Proposed Weskusfleur Substation at Koeberg. Lidwala Consulting Engineers. 2015.

Proposed Juno-Aurora 765kV Power Line in the Western Cape: Fauna & Flora Specialist Report for Impact Assessment. Nzumbulolo Heritage Solutions 2015.

The proposed Mookodi Integration Phase 2 132kV Power Lines and Ganyesa Substation near Vryburg, North West Province: Fauna & Flora Specialist Basic Assessment Report. Sivist 2014.

Basic Assessment Process for the Proposed Construction of the Transnet 7km 50 kV Power Line from Eskom Juno Substation to the proposed new Transnet Juno Traction Feeder Substation. Nsovo Environmental Consulting. 2014.

Basic Assessment Process for the Proposed Construction of the Transnet 5km 50 kV Power Line from Eskom Aries Substation to the proposed new Transnet Aries Traction Feeder Substation. Nsovo Environmental Consulting. 2014.

Basic Assessment Process for the Proposed Construction of the Transnet 15km 50 kV Power Line from Eskom Helios Substation to the proposed new Transnet Helios Traction Feeder Substation. Nsovo Environmental Consulting. 2014.

Burchell-Caprum-Mooidraai 132kV Power Line - Fauna & Flora Specialist Report for Basic Assessment. Savannah Environmental 2014.

Proposed Re-Alignment Of The Koeberg – Ankerlig VPower Line: Fauna & Flora Specialist Report For Basic Assessment. Savannah Environmental 2014.

Grid Connection for Redstone Solar Thermal Energy Plant- Redstone Solar Thermal to Olien Mts: Fauna & Flora Specialist Basic Assessment Report. SiVest 2014.

Grid Connection for Mainstream South Africa Perdekraal Wind Energy Facility. Fauna & Flora Specialist Report for Basic Assessment. ERM 2014.

Karoshhoek Grid Integration Infrastructure. Fauna & Flora Specialist Report for Basic Assessment. Specialist Report for Savannah Environmental. 2012.

Garob to Kronos Power Line - Fauna & Flora Specialist Report for Basic Assessment. Specialist Report for Savannah Environmental. 2012.

Loeriesfontein Wind Energy Facility – Substation & Grid Connection. Fauna & Flora Specialist Report for Basic Assessment. Specialist Report for Savannah Environmental. 2012.

Gouda Wind Energy Facility – Grid Connection. Walk-Through of Overhead Power Line - Gouda WEF to Eskom Windmill Substation. Specialist Report for Savannah Environmental. 2012.

Proposed Kappa-Omega 765 kV Transmission Line. Fauna, Flora & Ecology Walk-Through Report. Specialist Report for ACER Africa. 2013.

Infrastructure & Mining Developments:

Environmental Impact Assessment for the Proposed Putsberg Open Cast Mine Near Pofadder, Northern Cape. Fauna & Flora Specialist Report for EIA. Ecopartners 2013.

Proposed Establishment of the Gamsberg Zinc Mine, Concentrator Plant and Associated Infrastructure near the Town of Aggeneys, Northern Cape. Fauna & Flora Specialist Report For ESIA. ERM 2013.

Pella Water Board – Infrastructure Upgrade. Fauna & Flora Specialist Report for Basic Assessment. Environmental Resources Management 2012.

Transnet Manganese Ore Line Upgrade. Fauna & Flora Specialist Report for Basic Assessment. Environmental Resources Management 2012.

Proposed Vryburg Wastewater Treatment Works: Terrestrial Fauna & Flora Specialist Study for Basic Assessment. Endemic Vision 2013.

Proposed Mamatwane Compilation Yard, Northern Cape: Fauna & Flora Specialist Report for Impact Assessment. Environmental Resources Management 2013.

Rare Earth Separation Plant Near Vredendal, Western Cape Province. Fauna & Flora Specialist Report for Basic Assessment. Savannah Environmental 2012.

Proposed Mocke Poultry Farm: Fauna & Flora Specialist Report for Basic Assessment. Enviroworks 2015.

Basic Assessment for proposed Neotel Fibre Optic Cable Route 1 from George to Oudtshoorn. Fauna & Flora Specialist Report for Basic Assessment. Enviroworks 2015.

Basic Assessment for proposed Neotel Route 2 Fibre Optic Cables from Prince Albert Road to Oudtshoorn via the N12. Enviroworks 2015.

Basic Assessment for proposed Neotel Route 3 Fibre Optic Cables from Oudtshoorn to George via R328 and R102. Enviroworks 2015.

Basic Assessment for proposed Neotel Route 4 Fibre Optic Cables from Laingsburg to Oudtshoorn via Ladismith along the R323 and R62. Enviroworks 2015.

Improvements to the Ou Kaapse Weg / Silvermine Road Intersection. Specialist Faunal Study For Basic Assessment. Khula Environmental Consultants, 2012.

Upgrading of Tourism Facilities at Goegap Nature Reserve. Specialist Ecological Assesment. Van Zyl Environmental Consultants. 2012.

Plant Sweeps on Portion 2 of the Farm Demaneng 546, Kuruman District, Northern Cape Province for SA Manganese. 2011.



environmental affairs

Department:
Environmental Affairs
REPUBLIC OF SOUTH AFRICA

DETAILS OF THE SPECIALIST, DECLARATION OF INTEREST AND UNDERTAKING UNDER OATH

File Reference Number: NEAS Reference Number: Date Received:	(For official use only)
	DEA/EIA/

Application for authorisation in terms of the National Environmental Management Act, Act No. 107 of 1998, as amended and the Environmental Impact Assessment (EIA) Regulations, 2014, as amended (the Regulations)

PROJECT TITLE

San Kraal and Phezukomoya Wind Energy Facility Amendment, Split and revised grid connection BA.

Kindly note the following:

1. This form must always be used for applications that must be subjected to Basic Assessment or Scoping & Environmental Impact Reporting where this Department is the Competent Authority.
2. This form is current as of 01 September 2018. It is the responsibility of the Applicant / Environmental Assessment Practitioner (EAP) to ascertain whether subsequent versions of the form have been published or produced by the Competent Authority. The latest available Departmental templates are available at <https://www.environment.gov.za/documents/forms>.
3. A copy of this form containing original signatures must be appended to all Draft and Final Reports submitted to the department for consideration.
4. All documentation delivered to the physical address contained in this form must be delivered during the official Departmental Officer Hours which is visible on the Departmental gate.
5. All EIA related documents (includes application forms, reports or any EIA related submissions) that are faxed; emailed; delivered to Security or placed in the Departmental Tender Box will not be accepted, only hardcopy submissions are accepted.

Departmental Details

Postal address:

Department of Environmental Affairs
Attention: Chief Director: Integrated Environmental Authorisations
Private Bag X447
Pretoria
0001

Physical address:

Department of Environmental Affairs
Attention: Chief Director: Integrated Environmental Authorisations
Environment House
473 Steve Biko Road
Arcadia

Queries must be directed to the Directorate: Coordination, Strategic Planning and Support at:
Email: EIAAdmin@environment.gov.za

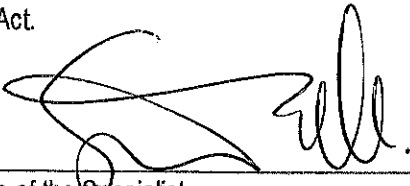
1. SPECIALIST INFORMATION

Specialist Company Name: B-BBEE	3Foxes Biodiversity Solutions		
	Contribution level (indicate 1 to 8 or non-compliant)	Level 4	Percentage Procurement recognition
			100%
Specialist name:	Simon Todd		
Specialist Qualifications:	BSc (Bot. & Zool.) BSC Hons (Zool.) MSc Conservation Biology		
Professional affiliation/registration:	SACNASP Pr.Sci.Nat 400425/11		
Physical address:	23 De Villiers Road, Kommetjie		
Postal address:	23 De Villiers Road, Kommetjie		
Postal code:	7975	Cell:	082 3326502
Telephone:		Fax:	
E-mail:	Simon.Todd@3foxes.co.za		

2. DECLARATION BY THE SPECIALIST

I, Simon Todd, declare that –

- I act as the independent specialist in this application;
- I will perform the work relating to the application in an objective manner, even if this results in views and findings that are not favourable to the applicant;
- I declare that there are no circumstances that may compromise my objectivity in performing such work;
- I have expertise in conducting the specialist report relevant to this application, including knowledge of the Act, Regulations and any guidelines that have relevance to the proposed activity;
- I will comply with the Act, Regulations and all other applicable legislation;
- I have no, and will not engage in, conflicting interests in the undertaking of the activity;
- I undertake to disclose to the applicant and the competent authority all material information in my possession that reasonably has or may have the potential of influencing - any decision to be taken with respect to the application by the competent authority; and - the objectivity of any report, plan or document to be prepared by myself for submission to the competent authority;
- all the particulars furnished by me in this form are true and correct; and
- I realise that a false declaration is an offence in terms of regulation 48 and is punishable in terms of section 24F of the Act.



Signature of the Specialist

3Foxes Biodiversity Solutions

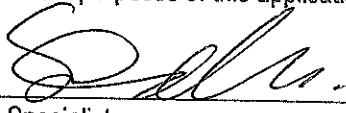
Name of Company:

03/09/2019

Date

3. UNDERTAKING UNDER OATH/ AFFIRMATION

I, Simon Todd, swear under oath / affirm that all the information submitted or to be submitted for the purposes of this application is true and correct.



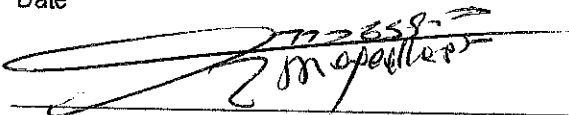
Signature of the Specialist

3Foxes Biodiversity Solutions

Name of Company

03/09/2019

Date



Signature of the Commissioner of Oaths

03/09/2019

Date

