

PHOTO REPORT: 99 BOTANIC GARDENS ROAD

PROPOSED DEMOLITION TO ACCOMMODATE NEW STUDENT HOUSING DEVELOPMENT AT 99 BOTANIC GARDENS RD, PORTION 1 OF ERF 2292 DURBAN.



theunissen
jankowitz
architects

1) 99 BOTANIC GARDENS RD LOCALITY & STREET VIEWS



Figure 1.1: Aerial View of the macro site context & locality for 99 Botanic Gardens Road



Figure 1.2: Aerial photo showing semi-detached no. 99 Botanic Gardens Rd & adjacent no. 101

inspired people inspiring spaces



Figure 1.3: Street View. NW Elevation 99 Botanic Gardens



Figure 1.4: Street View looking NW directly opposite no. 99



Figure 1.5: Street view Botanic Gardens looking SE to Berea/King Dinuzulu Rd



Figure 1.6: Street View looking North East



Figure 1.7: Front elevation



Figure 1.8: Enclose veranda at front entrance



Figure 1.9: Existing stairs to street level



Figure 1.10: SE side space

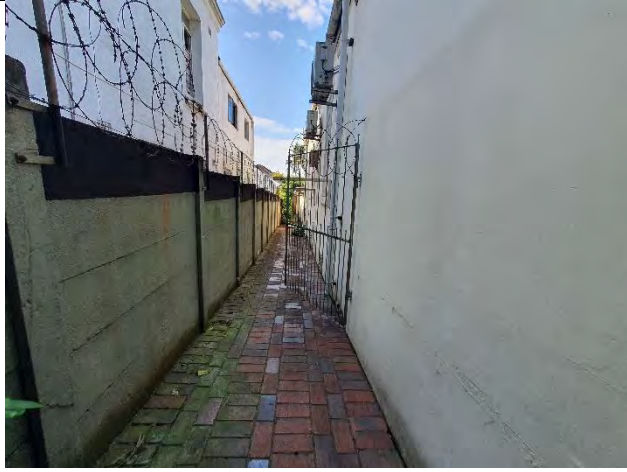


Figure 1.11: NE side space adjacent to no. 101



Figure 1.12: Rear vehicle entrance from access lane off Botanic Lane



Figure 1.13: Panhandle access off Botanic Lane



Figure 1.14: Stairs from parking area to the original house

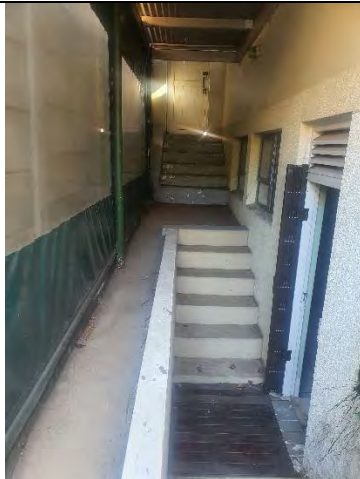


Figure 1.15: Stairs to basement/lower ground room & stairs to street level

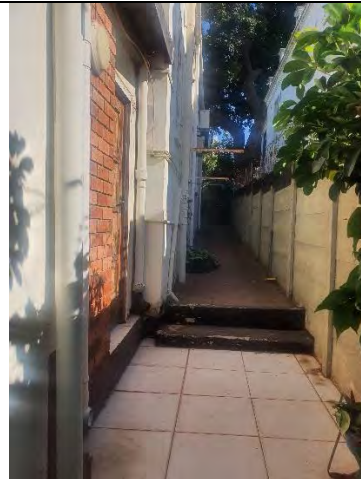


Figure 1.16: NE side space looking towards Botanic Gardens Road



Figure 17: Existing bedroom facing Botanic Gardens Rd entrance



Figure 18: View of roof and side space as seen from the roof of no. 101



Figure 19: Existing sheeted roof over original dwelling on no. 99 and over the new extension



Figure 20: Existing enclosed veranda on original portion of the house



Figure 21: Existing bedroom



Figure 22: Existing living room



Figure 23: Rear of existing original dwelling and entrance to the new extension at lower level



Figure 24: Interior of the new extension approved in 2004