

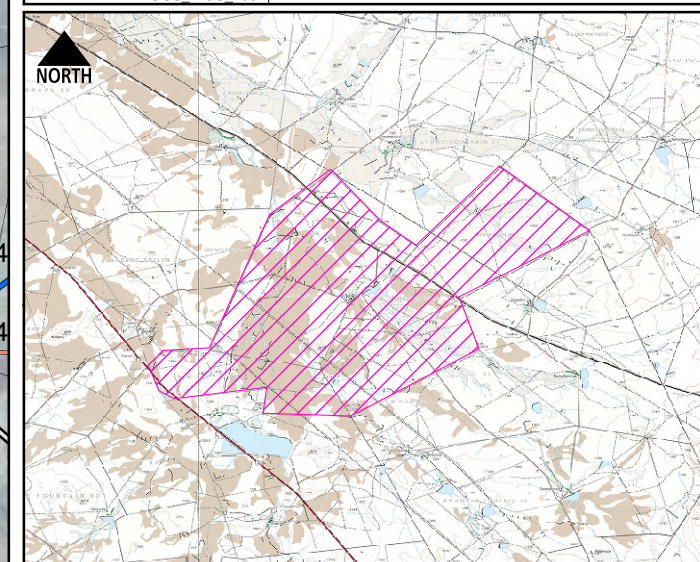
ROUTE PLAN: ALTERNATIVE 2

Upgrading & Development of an Access Road from the N10/Burgerville District Road (2448) Turn-Off into the Farm Riet Fountain No. 39C and to the Switching Station and Main Transmission Substation on Sun Central Cluster 1 (300 MW) Solar PV Facility between De Aar & Hanover, Emthanjeni Local Municipality, Pixley Ka Seme District Municipality, Northern Cape Province, South Africa.

Legend

- Hanover Town
 - Water Storage Tank
 - Alternative 2 (District Road)
 - 400kva Powerline
 - National Road
 - Secondary Road
 - Alternative 2 (District Road) Servitude Area (19m Wide)
 - N10 Servitude Area (35m Wide)
 - Eskom Servitude Area (55m Wide)
 - MTS Footprint
 - Construction Camp
 - Consolidated properties of landowner
- Cadastral Boundary (Zoning, Land Use)**
- Agriculture Zone 1, Agriculture
 - Agriculture Zone 1, Special Area
 - Agriculture Zone 1, Urban Area

DATE: 28/02/2023
 LOCAL AUTHORITY: EMTHANJENI LOCAL MUNICIPALITY
 PLAN NUMBER: DeAar Cluster 1 Access Road Route Plan (Alt2)
 SCALE: 1:70 000
 PREPARED FOR: Ecologes Environmental Consultants
 DRAWN: DIGITAL EARTH
 linda@digitalearth.co.za
 COORDINATE SYSTEM: GCS WGS 1984



APPLICATION SITE NGI_TOPO50_Mosaic_DEC2015

