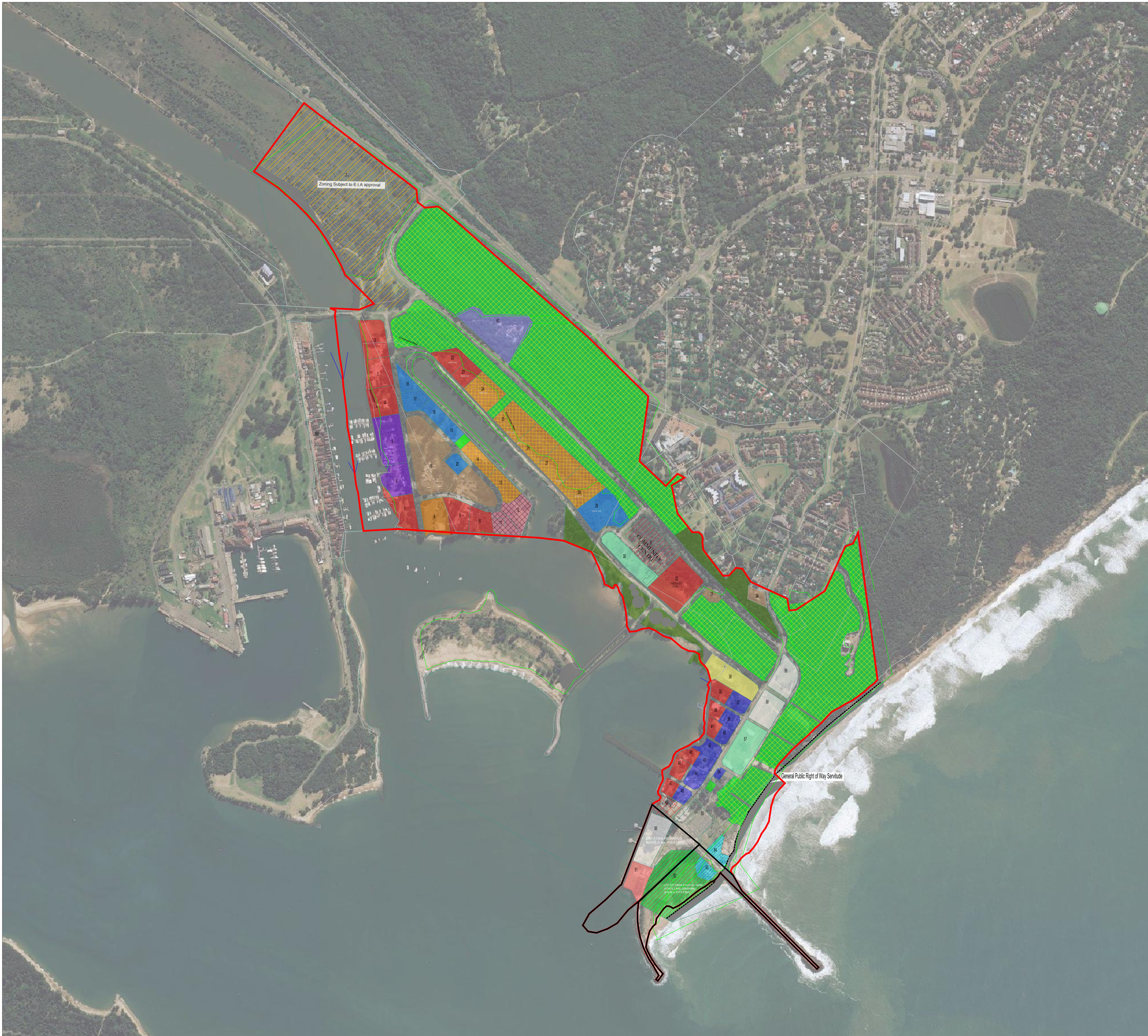


# RICHARDS BAY WATERFRONT DEVELOPMENT - SCENARIO MAP -



LEGEND		
LAND USE ZONE	NO. OF PLOTS	AREA (HA)
HOLIDAY APARTMENTS	7	3.32
HOTEL AND RESORT	68	4.36
MIXED USED	9	8.76
MIXED USED (ALKANSTRAND)	6	1.68
COMMERCIAL (RESTAURANT)	2	0.68
COMMERCIAL	6	2.88
OFFICE (ALKANSTRAND)	8	2.26
MARINE MANAGEMENT (TRANSNET)	1	0.95
INSTITUTION (NSRI)	1	0.98
INSTITUTION	1	0.51
MUNICIPAL (COMMUNITY HALL)	1	1.80
COMMERCIAL (ICC)	2	14.47
MUNICIPAL INTERPRETATION CENTRE	3	2.32
PARKING AREA	3	2.83
MARITIME SCHOOL	2	1.20
WATER DEPENDANT USES	2	1.32
PUBLIC SQUARE	1	3.63
UTILITIES AND SERVICES (MUNICIPAL PUMP STATION)	1	1.15
(AMPHITHEATER)	1	3.16
(SPORT PRECINCT)	2	2.45
ACTIVE OPEN SPACE (RECREATION)	5	5.57
ACTIVE OPEN SPACE (RECREATION)	1	3.63
PASSIVE OPEN SPACE	3	4.88
ENVIRONMENTAL SERVICES (CONSERVATION)	8	62.24
BEACHFRONT-BOARDWALK & PROMENADE		
ROADS		
	<b>77</b>	<b>135.53</b>

**NOTE:**  
 ENVIRONMENTAL BUFFER  
 CADASTRAL  
 PROPOSED OUTSIDE FIGURE

FUNDING AGENT:

APPROVING AUTHORITY (UMHLATHUZE LOCAL MUNICIPALITY)



NAME:.....  
 DESIGNATION:.....  
 MUNICIPALITY STAMP:

PREPARED BY:



Unit 2, Building 4  
 141 Witch-Hazel Avenue, Centurion  
 P.O. Box 7628, Centurion 0157  
 Tel. 012 643 1154 Fax. 086 293 2943  
 E-mail: maseko@jsibukoseafrica.co.za

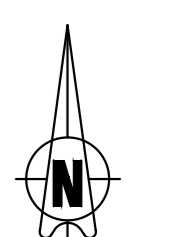
DATE: SEPTEMBER 2022

MAP REFERENCE/VERSION NO. Version 2

COORDINATE SYSTEM: Hartebeesthoek94 (Lo31)

DRAWN BY: Sibusiso Khuamlo  
 CHECKED BY: Petronell Human

PLAN NO. 360UMH\_01



SCALE 1 : 3000