

Appendix L

PRE-APPLICATION MEETING
MINUTES





MEETING NOTES

JOB TITLE	Dalmanutha Wind Energy Facility
PROJECT NUMBER	41103722
DATE	14 June 2022
TIME	09h00
VENUE	MS Teams
SUBJECT	Pre-application Meeting with DFFE
CLIENT	Dalmanutha Wind (PTY) LTD
PRESENT	Ashlea Strong (AS) - WSP Thirushan Nadar (TN)- WSP Muhammad Essop (ME)- DFFE Coenrad Agenbach (CA)-DFFE Trisha Rene Pillay (TP)- DFFE Andrea Gibb (AG)- Enertrag SA Sean Maphosa (SM)- Enertrag SA Sandhisha Jay Narain (SJN)- Enertrag SA
APOLOGIES	Michael Barnes (MB) -Enertrag SA

Building C, Knightsbridge
33 Sloane Street
Bryanston, 2191
South Africa

T: +27 11 361 1300
F: +27 11 361 1301

www.wsp.com \\corp.pbwan.net\za\Central_Data\Projects\41100xxx\41103722 - Dalmanutha WEF\41 ES\01-Reports\01-Pre-App\Pre-app Meeting\41103722_Dalmanutha pre-app Meeting_Meeting Notes_20220801_Final for Issue.docx

MEETING NOTES

MATTERS ARISING

ACTION

NOTE:

These notes constitute a summary of the key discussion points and decisions made during the discussion. They are not intended to reflect the exact discussions held.

1.0 INTRODUCTIONS

Muhammad Essop (ME) opened meeting welcoming everyone and handed over to WSP. Each team proceeded with introductions (WSP, DFFE & ENERTRAG SA)

Ashlea Strong (AS) noted that Michael Barnes gave apologies for not attending.

Approval was obtained to record the meeting for minute purposes.

None

2.0 PRESENTATION

ME requested that all questions should be raised with the “hand” function on MS teams

DFFE handed over to WSP for the presentation of the Dalmanutha wind farm project overview details and specifications.

Thirushan Nadar (TN) began presentation outlining the projects namely:

- Dalmanutha WEF (up to 300MW),
- Dalmanutha WEF grid infrastructure, (up to 132kV)
- Dalmanutha West WEF (less than 20MW)
- Dalmanutha West WEF grid infrastructure (up to 132kV)
- Common collector up to 132kV substation and powerline

The Presentation is included in **Appendix A**.

Location of the project and its respective district and local municipalities were presented.

AS further mentioned, that the project located, along the N4 running through towards Nelspruit on the northern boundary, (near the Bergendal Monument) the facility then runs southwards towards the next closest town, which is Carolina.

Coenrad Agenbach (CA) enquired on why the facility is being separated into WEF (up to 300MW) & West (less than 20MW) due to it sometimes problematic to later split and/or join the licence and authorisations.

Sean Maphosa (SM) replied, Dalmanutha West will possibly be off taken by EXXARO mine to supply power to them, just west from the location. If not it will connect to the main substation on the Dalmanutha facility, thereafter proceed to be Gumeni MTS.

ME noted that it was important to identify if the projects will be part of the IRP and or bidding programs, in order to find out who the Competent authority is for each. Thereafter, agreed to raise it at the end of the meeting.

TN noted that the project does not fall within a REDZ.

TN mentioned the projects will be applied for under a Special Purpose vehicles (SPV) allowing each to have its own EA

Scoping & EIA process

Dalmanutha WEF (up to 300MW),

Basic assessment process

Dalmanutha WEF grid infrastructure, (up to 132kV)

Dalmanutha West WEF (less than 20MW)

Dalmanutha West WEF grid infrastructure (up to 132kV)

Common collector up to 132kV substation and powerline

MEETING NOTES

WULA component also will be required.

ME enquired if CBA and ESA identified on site were from DFFE screening tool, TN confirmed the tool was done and a report was generated giving this result.

ME also asked if there were Bioregional plans, sector plans or CBA plans for Mpumalanga province.

AS replied, yes there is the Mpumalanga Biodiversity Plan which the Mpumalanga Tourism and Parks Agency (MTPA) utilises.

ME noted that there is a need for finding out which particular CBA region the project falls under because the relative requirements will need to be adhered to for developments in those areas. *ME gave example of CBA area 1 requiring biodiversity offset and the need to include offsets thereafter.*

WSP confirmed

AS confirmed that this will be part of scope of work for the Ecology and terrestrial biodiversity studies.

ME mentioned that the specific listed activities triggered will need to be noted.

WSP confirmed

TN confirmed that only High-level Listed activities were outlined in the presentation and that the full scale of triggered activities will be listed later in Scoping and EIA phase.

WSP confirmed

CA enquired on Activity 11 in the project description referring to 3 wind farms, which was probably just a mistake? The error was confirmed, and TN noted that only 2 wind facilities will form part of the applications.

ME enquired if there are separate specialists for the different disciplines and if they are SACNASP accredited, and have all read and understood the protocols

AS confirmed, all of the above.

ME mentioned, Part A of protocols must be read, understood and included in reports of EIA phase, site verification and motivation component as well.

Sandhisha Jay Narain (SJN) enquired if terrestrial biodiversity and aquatic biodiversity study can be done by one specialist or must be two separate specialists.

AS Confirmed

ME answered it should ideally be two different specialists, AS further mentioned for this project will be separate specialists per discipline.

AS confirmed

Andrea Gibb (AG) enquired if fauna and flora should be different specialist as well.

ME outlined that according to regs the relative specialist must be registered in that specific field (i.e. aquatic specialist registered to produce aquatic studies), flora and fauna can be the same report. However, when encountering different threatened species then specific specialists will need to be appointed.

SM confirmed

ME enquired on Geotech study being included for all projects.

AS confirmed that a desktop Geotechnical Study is being included for all projects. Furthermore, AS mentioned, that studies identified by the screening tool for which external specialists were not appointed (i.e. low sensitivities), included the Aviation and Radio Frequency Interference (RFI) studies. In these cases the study/assessment will be done by WSP. WSP will be notifying the relevant stakeholders accordingly including Air Traffic Navigation Services (ATNS), Civil Aviation Authority (CAA), South African Weather Service (SAWS) and relevant telecommunication providers.

WSP to attach to minutes

AS noted, that the bigger facility will be Bid in the REIPPPP and the smaller facility ideally will be off taken by Exxaro mine (if not then will be bought into the REIPPPP Bid). SM agreed.

ME noted that 300MW facility is bidding application, and 20MW facility will be off taken, therefore the **300MW facility together with grid infrastructure, (up to 132kV) and Common Collector**

MEETING NOTES

132kV and substation power line will have the DFFE as the Competent authority (National) and the West 20MW facility together with the grid infrastructure (up to 132kV) will have MDARDLEA (Provincial) as Competent authority.

The Public Participation Plan (PPP) was presented and WSP noted that although not required a PPP will be made available with the minutes.

AG enquired on consolidated PP process despite different competent authorities. AS noted that the PP will be undertaken in a consolidated manner as far as possible so as to reduce the potential for stakeholder fatigue, especially considering the surrounding mining areas.

CA enquired if the language of the Project documents will be made available only in English and Afrikaans and not other languages. Possibility of having an executive summary in relative languages should be considered. AS confirmed that plans were already in place to ensure that adverts, site notices, notification letters and background information documents will be in English, Afrikaans and Zulu.

CA noted that Mining right holders must be considered as well as SANRAL and tourism sectors. Consult with biodiversity unit and protected areas unit and relative officials and protected parks. Visual impact assessment important as well.

AS confirmed all of the above. AS also noted that a Data free website will be used for access to project information

ME hesitant to agree to consolidated PPP. DFFE ok with it if MDARDLEA is on board as well. Furthermore, each project must have its own Stakeholder Engagement Report.

AS enquired if the DFFE would support combined specialist reporting, if they split impact assessment and mitigation for different projects?

CA replied DFFE don't support this. AS noted this response.

CA mentioned generic EMPr for substations etc are required in addition to the normal EMPrs. AS confirmed that these will be included in the EMPrs as required.

If Offsets are required as per mitigation hierarchy, DFFE requires draft Offset plan upfront with draft agreement in place for inclusion in Draft BAR or EIAR- time implications must be considered. Scoping report must have way forward if Offset plan is needed or not. This should be supported by specialists and authorities either agreeing or disagreeing if required.

Minutes to be sent to ME and TP

WSP to confirm with MDARDLEA

WSP noted

TN noted

3.0 CONCLUDING

- No further comments from attendees
- Meeting concluded

MEETING NOTES

APPENDIX A: PRESENTATION



DFFE Pre-Application Meeting

Dalmanutha Wind Energy Complex



1



Introductions

- Developer** **ENERTRAC South Africa (Pty) Ltd**
Michael Barnes (Senior Project Developer)
Sandhisha Jay Narain (Senior Project Developer)
Sean Maphosa (Junior Project Developer)
Andrea Gibb (Senior Project Developer)
- EAP** **WSP Group Africa (Pty) Ltd**
Ashlea Strong (Project Manager)
Thirushan Nadar (Consultant)
- Authority** **Department of Forestry, Fisheries and the Environment (DFFE)**
Muhammad Essop
Trisha Pillay
Coenrad Agenbach



2

2

wsp

Agenda

- 1 **Overview of the Project**
Background
Location
- 2 **Overview & Confirmation of Permitting Processes**
Listed Activities
Specialist Assessments as identified by DFFE Screening Tool
Specialist Studies commissioned
Specialist Studies not commissioned
Competent Authority
- 3 **Public Participation Process**
- 4 **Timeframes**
- 5 **Discussion**
Clarification
Questions
Way Forward

3

3

wsp

Overview of the Project

Background

ENERTRAG SA proposes to establish a renewable energy facility near Belfast Mpumalanga, known as the Dalmanutha Energy Complex, which requires various applications for environmental authorisations.

The proposed complex is divided into 5 subprojects:

- **Dalmanutha Wind Energy Facility (WEF) (up to 300MW)**
- **Dalmanutha Wind Energy Facility Grid infrastructure (up to 132kV)**
- **Dalmanutha West WEF (less than 20MW)**
- **Dalmanutha West Grid infrastructure (up to 132kV)**
- **Common Collection up to 132kV Substation and Powerline**

Each facility will include a Battery Energy Storage System (BESS). The BESS will be used to store excess energy generated by the wind facilities. The BESS will have a storage capacity of up to 100MW/400MWh with up to four hours of storage.

4

4



Overview of the Project

Location

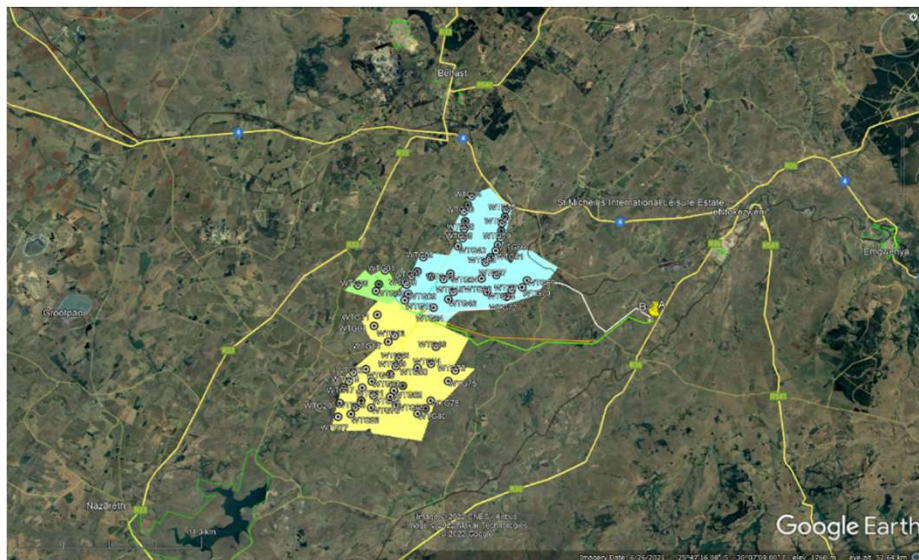
	Dalmanutha WEF & Grid Infrastructure	Dalmanutha West WEF & Grid Infrastructure	Common Grid Infrastructure
Province	Mpumalanga		
District Municipalities	Nkangala & Gert Sibande District Municipalities	Nkangala District Municipality	Nkangala District Municipality
Local Municipalities	Chief Albert Luthuli & Emakhazeni Local Municipalities	Emakhazeni Local Municipality	Emakhazeni Local Municipality
Farms	<ul style="list-style-type: none"> • Portions 1 and 9 of Farm Berg-en-dal 378 • Portions 5 and 7 of Farm Vogelstruispoort 384 • Portions 6, 7, 8, 10, 12 and 13 of Farm Waaikraal 385 • Waaikraal Portion 24 (a portion of Portion 7) • Portion 5 of Vogelstruispoort Farm 384 • Portions 3 and 4 of Farm Leeuwkloof 403 • Portion 1 and Portion 2 of Farm Leeuwkloof 404 • Portion 3 of Farm Geluk 405 • Portion 1 of Farm Welgevonden 412 • Portion 0 of Farm Camelia 467 	<ul style="list-style-type: none"> • Portions 4, 15 and 17 of Vogelstruispoort 384 	<ul style="list-style-type: none"> • Portions 6, 7, 10, 12 of Farm Waaikraal 385 • Portions 4 and 6 of Driekop 387

5

5



Overview of the Project



6

6



Dalmanutha Wind Facility



7

7



Dalmanutha West Wind Facility

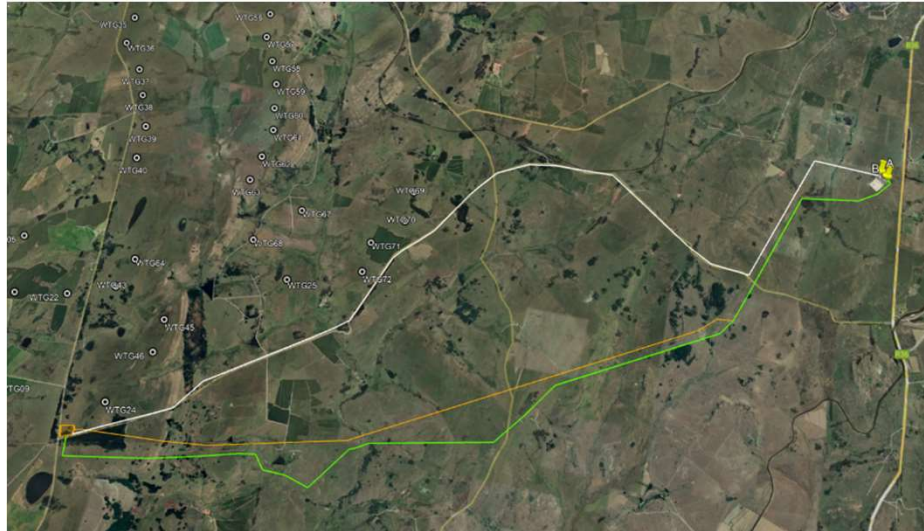


8

8



Common Collection up to 132kV Substation and Powerline



9

9



Overview of the Project

Typical Infrastructure

Specifications	Dalmanutha WEF	Dalmanutha West
Total Project Area	9 400 ha	580 ha
Buildable Area	Approximately 400 ha	Approximately 15 ha
Wind Turbines	Up to 70	Up to 4
WEF capacity	Up to 300MW	Less than 20MW
Hub Height	Up to 200m	
Rotor Diameter	Up to 200m	
Powerline	Up to 132kV	
Powerline Length	Approximately 15km	
On-site Substation footprint including BESS	Up to 4ha	Up to 2ha
BESS capacity	100MW/400MWh	100MW/400MWh

10

10



Overview of the Project

Typical Infrastructure

Specifications	Dalmanutha Wind Energy Common Grid Infrastructure
Total Project Area	Up to 5ha
Powerline	Single 132 kV double circuit
Powerline Length	Approximately 18km
Eskom substation expansion footprint	Up to 2ha

11

11




Overview of the Project

Key Considerations

- The general project area falls within **Critical Biodiversity Areas (CBA)** and **Ecological Support Areas (ESA)**. The CBA and ESA include both terrestrial and aquatic themes among other themes.
- The project are also falls within **National Protected Area Expansion Strategy (NPAES) Focus Areas**.
- The ecosystem of the project area is considered endangered and vulnerable, and is located within a **Freshwater Ecosystem Priority Area (FEPA)** sub-catchment.
- The Project Area does not fall with in any **Strategic Transmission Corridors** or **Renewable Energy Development Zones**.

12

12



Permitting Processes

Environmental Authorisation Process

Each of the below will be applied for under a Special Purpose Vehicle (SPV), allowing each its own Environmental Authorisation


- **Scoping and Environmental Impact Assessment (S&EIA) Processes:**
 - Dalmanutha WEF (up to 300MW)

- **Basic Assessment Process:**
 - Dalmanutha West WEF (less than 20MW)
 - Dalmanutha West WEF 132 kV grid infrastructure
 - Dalmanutha WEF 132 kV grid infrastructure
 - Common collector 132kV substation and powerline

- **Water Use Licence**
 - Water use Licences and/or General Authorisations will be applied for as required

13

13




Permitting Processes

Listed Activities – Listing Notice 1

Listed Activity	Description of Project Activity
<p><u>Activity 1</u> The development of facilities or infrastructure for the generation of electricity from a renewable resource where— (i) the electricity output is more than 10 megawatts but less than 20 megawatts; or (ii) the output is 10 megawatts or less but the total extent of the facility covers an area in excess of 1 hectare; excluding where such development of facilities or infrastructure is for photovoltaic installations and occurs— (a) within an urban area; or (b) on existing infrastructure.</p>	<p>The proposed Dalmanutha West WEF will generate less than 20 MW of electricity output from a renewable resource.</p>
<p><u>Activity 11</u> The development of facilities or infrastructure for the transmission and distribution of electricity— (i) outside urban areas or industrial complexes with a capacity of more than 33 but less than 275 kilovolts; or (ii) inside urban areas or industrial complexes with a capacity of 275 kilovolts or more; excluding the development of bypass infrastructure for the transmission and distribution of electricity where such bypass infrastructure is — (a) temporarily required to allow for maintenance of existing infrastructure; (b) 2 kilometres or shorter in length; (c) within an existing transmission line servitude; and (d) will be removed within 18 months of the commencement of development.</p>	<p>The Dalmanutha Wind Complex (all three wind farms) will connect to the nearby Gumeni MTS through a Common 132kV substation and a 132kV Powerline. The common powerline is approximately 18km in length.</p>

14

14




Permitting Processes

Listed Activities – Listing Notice 1

Listed Activity	Description of Project Activity
<p><u>Activity 27</u> The clearance of an area of 1 hectares or more, but less than 20 hectares of indigenous vegetation, except where such clearance of indigenous vegetation is required for: (i) the undertaking of a linear activity; or (ii) maintenance purposes undertaken in accordance with a maintenance management plan.</p>	<p>The on-site Substation footprint including BESS facilities will utilise a footprint of up to 6ha for the North and South WEF, and up to 2 ha for the West WEF which will result in the clearance of less than 20 ha of indigenous vegetation.</p>

15

15



Permitting Processes

Listed Activities – Listing Notice 2

Listed Activity	Description of Project Activity
<p><u>Activity 1</u> The development of facilities or infrastructure for the generation of electricity from a renewable resource where the electricity output is 20 megawatts or more, excluding where such development of facilities or infrastructure is for photovoltaic installations and occurs: (a) within an urban area; or (b) on existing infrastructure.</p>	<p>The proposed Dalmanutha WEF will generate up to 300 MW of electricity output from a renewable resource.</p>
<p><u>Activity 15</u> The clearance of an area of 20 hectares or more of indigenous vegetation, excluding where such clearance of indigenous vegetation is required for— (i) the undertaking of a linear activity; or (ii) maintenance purposes undertaken in accordance with a maintenance management plan.</p>	<p>The proposed Dalmanutha WEF will result in the clearance of up to 200 ha of indigenous vegetation.</p>

16

16



Permitting Processes

DEA Screening Tool Identified Sensitivities

	Very High Sensitivity	High Sensitivity	Medium Sensitivity	Low Sensitivity
Agriculture Theme	Dalmanutha WEF	Dalmanutha WEF and West WEF 132 kV Grid Connections		
Animal Species Theme		All projects		
Aquatic Biodiversity Theme	All projects			
Archaeological and Cultural Heritage Theme	Dalmanutha WEF 132 kV Grid Connections			Dalmanutha WEF and West WEF 132kV Grid Connections
Avian (Wind) Theme				All WEFs
Bats (Wind) Theme		All WEFs		
Civil Aviation Theme		Dalmanutha WEF 132 kV Grid Connections	Dalmanutha WEF and West WEF & 132kV Grid Connections	
Defence Theme				All projects
Flicker Theme	All WEFs			
Landscape (Wind) Theme	All WEFs			
Palaeontology Theme	All projects			
Noise Theme	All WEFs			
Plant Species Theme			All projects	
RFI (Wind) Theme				All WEFs
Terrestrial Biodiversity Theme	All projects			

17

17



Permitting Processes

DEA Screening Tool Specialist Assessments

Specialist Study	Dalmanutha WEF	West WEF	132KV Grid Connection	Dalmanutha WEF 132kV	132kV West Grid Connection
Agricultural	X	X	X	X	X
Landscape / Visual	X	X	X	X	X
Archaeological and Cultural heritage	X	X	X	X	X
Palaeontological	X	X	X	X	X
Terrestrial Biodiversity	X	X	X	X	X
Aquatic Biodiversity	X	X	X	X	X
Avian Impact	X	X	X	X	X
Civil Aviation	X	X	X	X	X
Defence	X	X			
RFI	X	X	X	X	X
Noise	X	X			
Flicker	X	X			
Traffic	X	X			
Geotechnical	X	X	X	X	X
Socio-Economic	X	X			
Plant Species	X	X	X	X	X
Animal Species	X	X	X	X	X

18

18



Permitting Processes

Specialist Studies Commissioned

SPECIALIST ASSESSMENT	COMMENT
Soils and Agricultural Potential Assessment	A soils and agricultural survey will be undertaken.
Archaeological and Cultural Heritage Impact Assessment	An Archaeological and Heritage Impact Assessment will be undertaken.
Palaeontology Impact Assessment	A Palaeontological Impact Assessment will be undertaken.
Visual Impact Assessment	The projects could potentially negatively impact sensitive visual receptors. A Visual Impact Assessment will therefore be undertaken. The Visual impact Assessment will consider impacts related to flicker.
Terrestrial Biodiversity Impact Assessment	The projects could negatively affect CBA and NPAES Focus Areas. A Terrestrial Biodiversity Assessment will be undertaken. This assessment will include both fauna and flora aspects.
Aquatic Biodiversity Impact Assessment	The projects could negatively affect FEPA areas. An Aquatic Biodiversity Assessment will be undertaken.
Freshwater Impact Assessment	The projects could potentially negatively impact water resources. A Freshwater Impact Assessment will therefore be undertaken.
Avifauna Impact Assessment	Due to the potential impacts on birds as a result of the projects, an Avifauna Assessment will be undertaken.

19

19



Permitting Processes

Specialist Studies Commissioned

SPECIALIST ASSESSMENT	COMMENT
Bat Impact Assessment	Due to the potential impacts on bats as a result of the projects, an Avifauna Assessment will be undertaken. This study will be specific to the WEFS.
Social Impact Assessment	A detailed social assessment will be prepared. The social statement will be based on a desktop review and telephonic interviews with key stakeholders.
Noise Impact Assessment	Due to potential impacts on sensitive receptors with regards to noise generated from the wind turbines, a Noise Assessment will be undertaken.
Geotechnical Assessment	A preliminary Geotechnical Assessment will be undertaken as part of the S&EIA Process.
Traffic Assessment	A traffic assessment will be undertaken
Qualitative Risk Assessment	A hazard and risk identification assessment for the three BESS facilities will be undertaken

20

20



Permitting Processes

Specialist Studies Not-Commissioned

SPECIALIST ASSESSMENT	COMMENT
RFI	A Radio Frequency Interference (RFI) Study will not be undertaken. The South African Weather Service (SAWS) and relevant telecommunications stakeholders will be engaged with as part of the Public Participation Process.
Civil Aviation	The Civil Aviation Authority will be included on the project stakeholder database. They will be informed of the proposed Project, and comment will be sought. An Application for the Approval of Obstacles will also be submitted to SACAA once preferred bidder status is obtained. A compliance statement will be prepared by the EAP and included in the EIA Reports.
Defence	The Department of Defence will be included on the project stakeholder database. They will be informed of the proposed Project, and comment will be sought. A compliance statement will be prepared by the EAP and included in the EIA Reports for the three WEFs.

21

21



Permitting Processes

Competent Authority

o Section 24C(2)(a) of NEMA

- The Minister must be identified as the Competent Authority (CA) if the activity has implications for international environmental commitments or relations

o GN 779 of 01 July 2016

- Identifies the Minister as the CA for the consideration and processing of environmental authorisations and amendments thereto for activities related the Integrated Resource Plan (IRP) 2010 – 2030

o DFFE is therefore deemed to be the Competent Authority

22

22



Public Participation Process

Public Participation Plan

- A consolidated approach to the Public Participation (PP) Process for the S&EIA and BA processes respectively
- Site notices:
 - English, Afrikaans and Zulu
 - Onsite and in the surrounding areas
- Compilation and management of I&AP Database
- Written notification:
 - Owners and occupiers on or adjacent to the proposed project site
 - Municipality Ward Councillor
 - District Municipality
 - Relevant State Departments
- Advertisement (English, Afrikaans and Zulu in local newspaper)
- Draft Report Review for 30 days
 - WSP on request
 - Online on the WSP website
 - WSP will confirm with local Public Libraries as to whether they are open and able to accept documents for public review
- Public or focus group meetings will be held as required.

23

23



Timeframes

Timeframes

- Authority Timeframes
 - Does not fall within a Strategic Transmission Corridor (GN 113)
 - Does not fall within a REDZ (GN 114)
 - Authority decision making timeframe is 107 days
- Key Milestones:
 - Submission of Application Forms – August 2022 and January 2023
 - Draft Scoping Report Public Review – August / September 2022
 - Submission of Final Scoping Reports – September 2022
 - Draft EIA and BA Report Public Review – February 2023
 - Submission of Final EIA and BA Reports - March 2023

24

24



Discussion

○ Specific Clarification

- Combined specialist reporting: The propose to combine specialist reporting for linked infrastructure e.g. the WEF and associated grid connection. Specialist will be required to split the impact assessment and mitigation measures accordingly – is this approach acceptable to the DFFE?
- Given the workload – it is anticipated that two or more Case Officers may be allocated to the project?
- Given that ATNS are now the official party responsible for obstacle assessments and effectively subcontract CAA - is ATNS comment on the EIA sufficient for the purposes of informing the protocols as they relate to the CAA?

25




Discussion





- Questions
- Way Forward



26



Thank you

in    

wsp.com