

Figure 3-7: Original layout considered in the Scoping Phase for the proposed wind energy facility (south).

Figure 3: Original layout considered in the EIA process for the proposed WEF (South): Source Final EIA Report dated April 2012 (Aurecon, 2012)

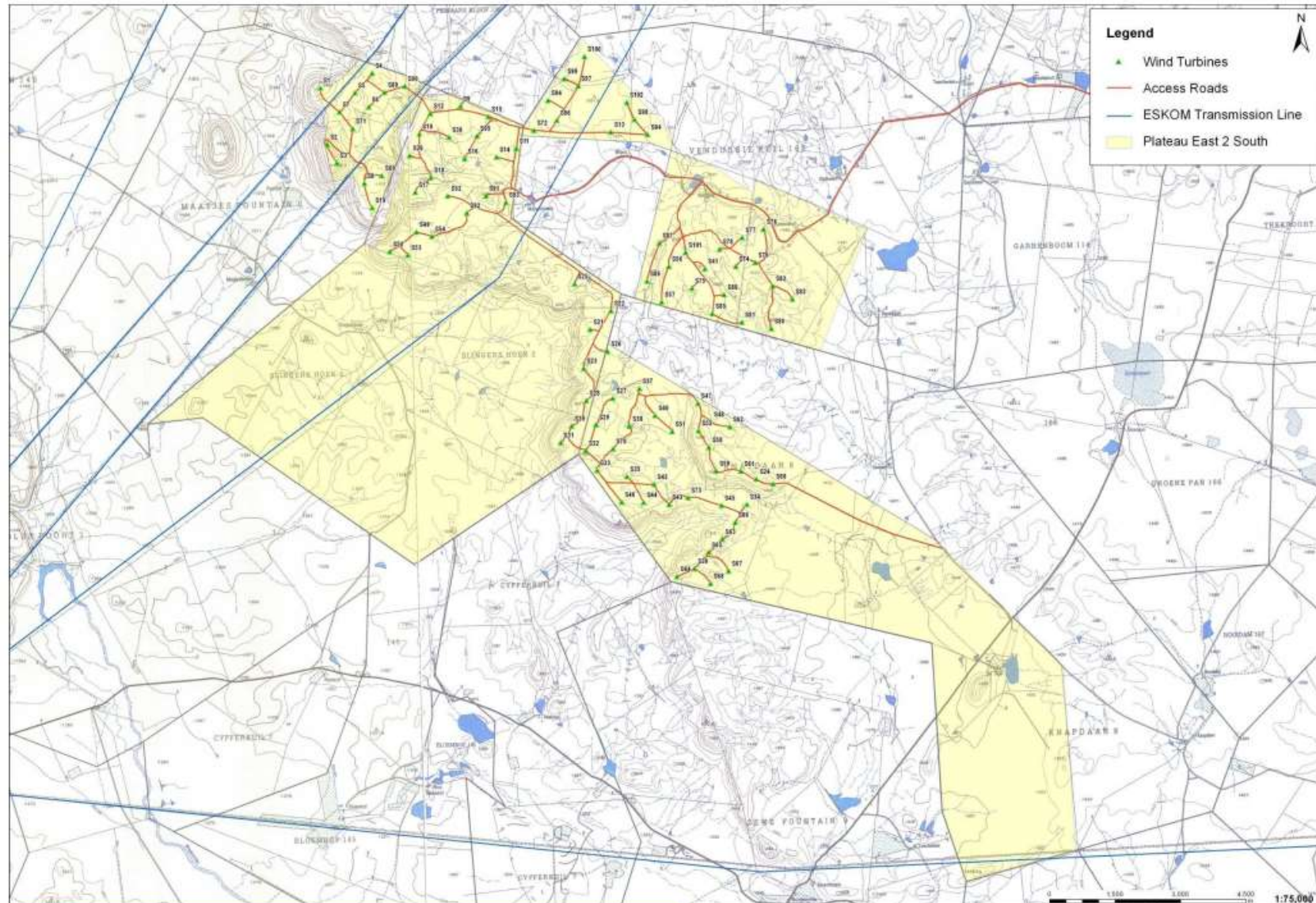


Figure 3-8: Revised layout considered in February-April 2012 for the proposed southern wind energy facility.

aurecon

© Aurecon (2012) No unauthorised reproduction, copy or adaptation, in whole or in part, may be made.

Figure 4: Revised layout considered in April 2012 during the EIA process for the proposed De Aar 2 South WEF (Source: Final EIA Report dated April 2012 (Aurecon, 2012))

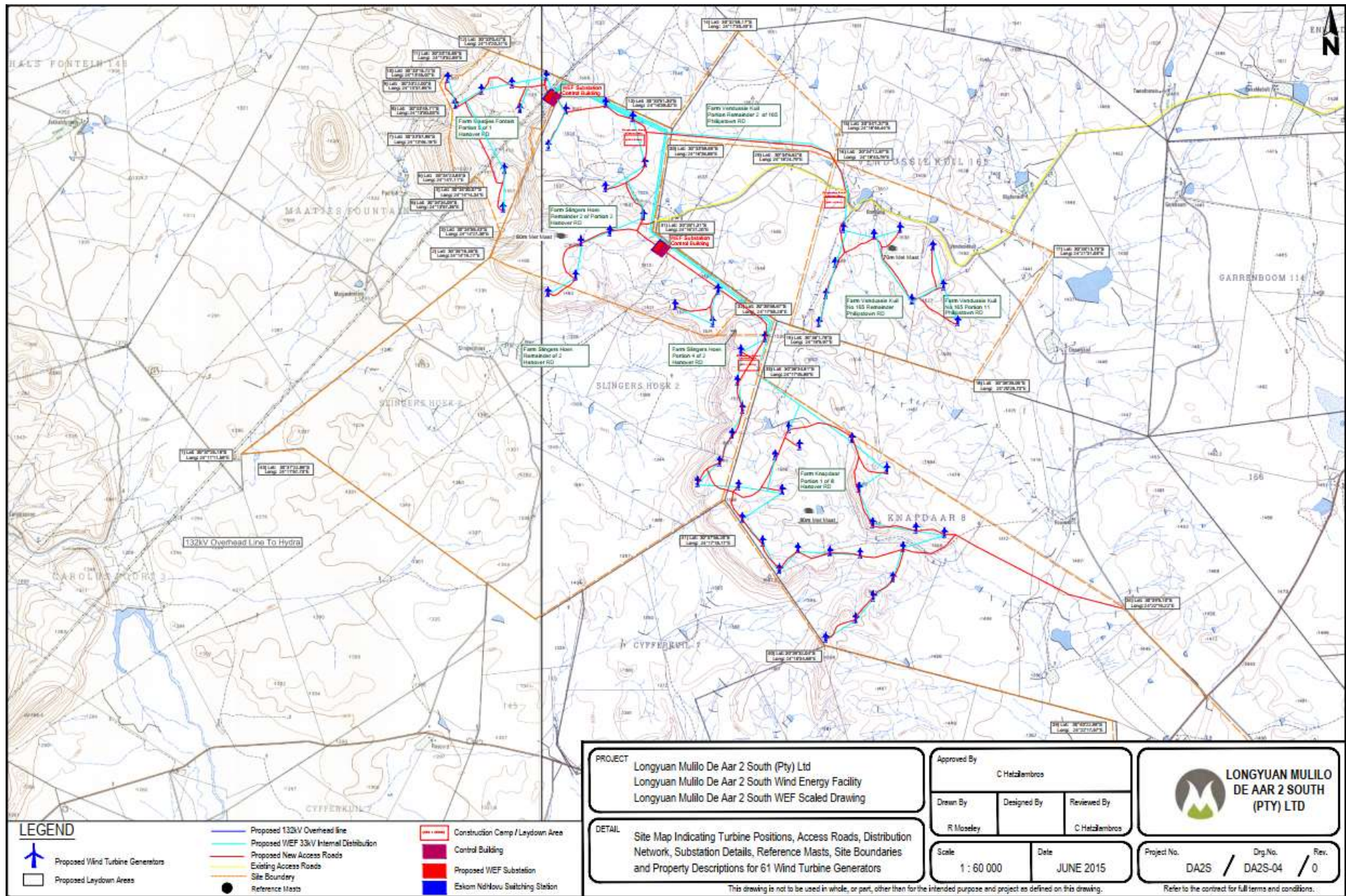


Figure 5: Layout included in the Part 2 EA amendment process in 2015.

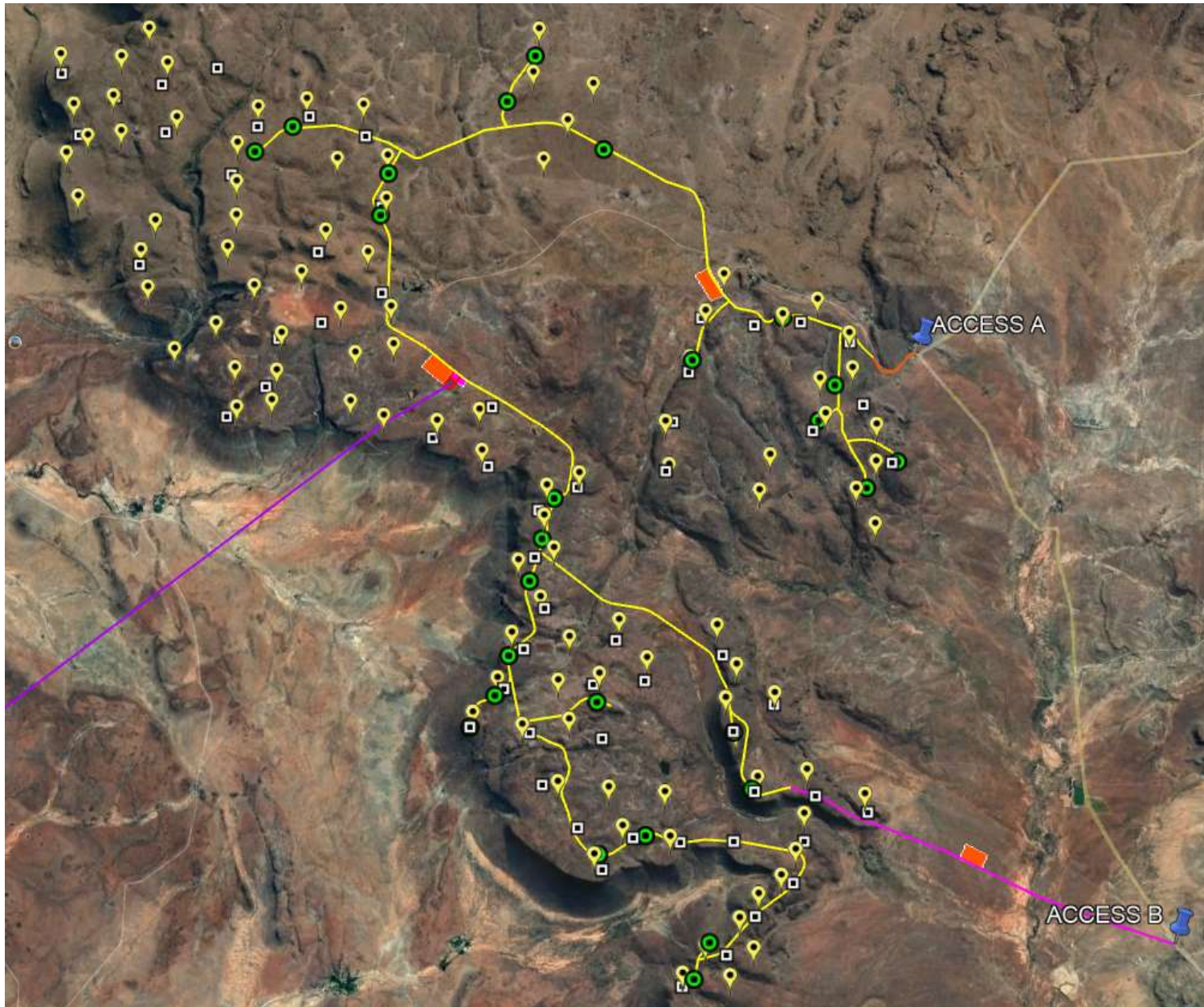


Figure 6: Latest proposed layout (proposed Final Layout Plan (January 2023)) (green icons), set against the originally assessed 103 turbines (yellow balloons) and assessed 61 turbine layout (white squares) included in the approved Part 2 EA amendment in 2015 - 2016.