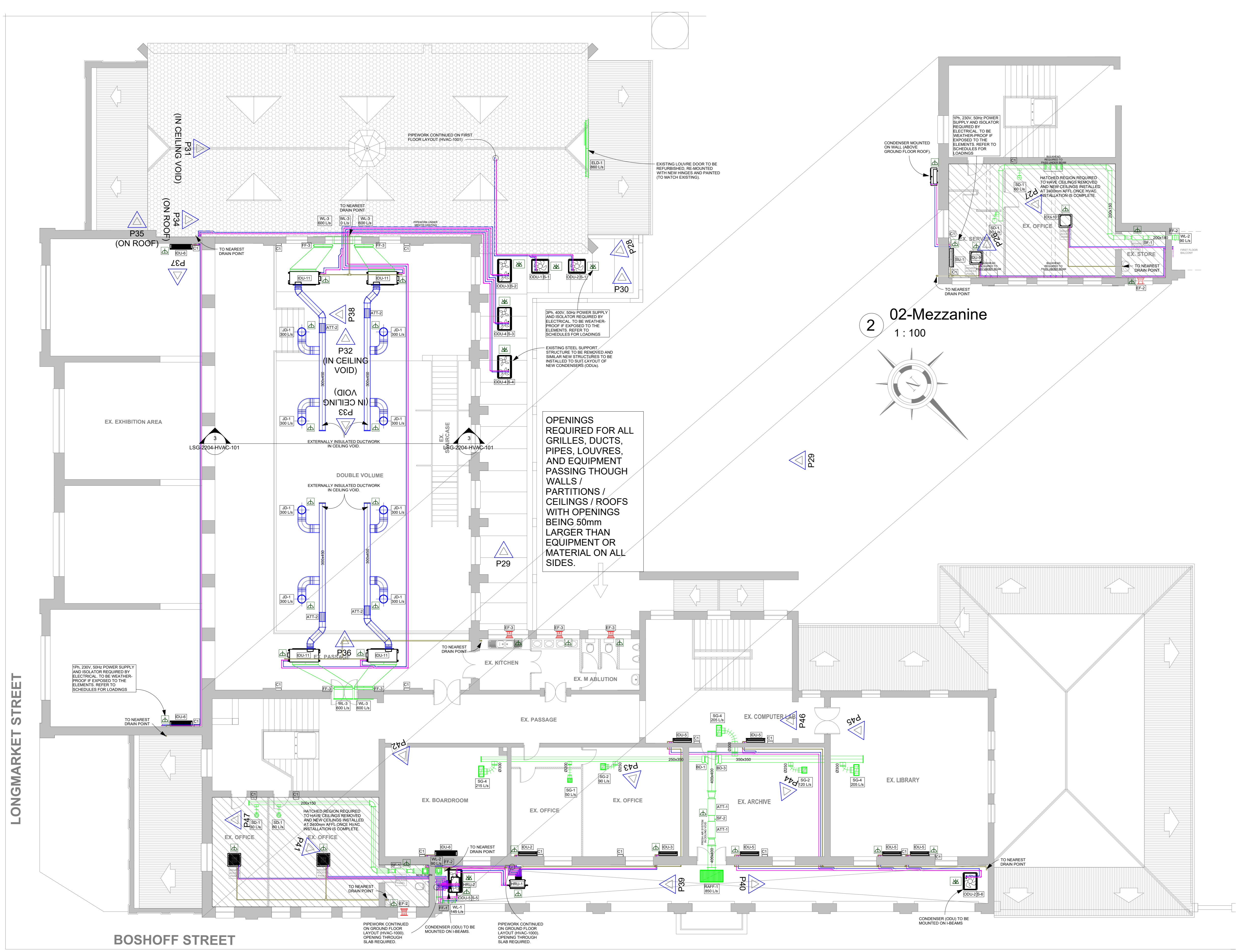


LIST OF REVISIONS			
NO.	DATE	DESCRIPTION	BY
10	19/09/22	Issued for Information	SG
11	26/02/22	Issued for Information / Approval	SG
12	04/10/22	Issued for AMFA Submission	SG

COLOUR LEGEND	
—	AC SUPPLY AIR / LIQUID PIPING
—	RETURN AIR / GAS PIPING
—	EXTRACT AIR
—	FRESH AIR
—	CONDENSATE DRAINAGE

ELECTRICAL LEGEND	
	IPN POWER SUPPLY AND ISOLATOR. TO BE WEATHER PROOF IF EXPOSED TO THE ELEMENTS. REQUIREMENTS AS PER EQUIPMENT SCHEDULES.
	IPN POWER SUPPLY AND ISOLATOR. TO BE WEATHER PROOF IF EXPOSED TO THE ELEMENTS. REQUIREMENTS AS PER EQUIPMENT SCHEDULES.

- NOTES:
1. ALL FRESH AIR & EXTRACT AIR HANDLING UNITS TO BE CONNECTED TO THE FIRE SIGNAL AND AUTOMATICALLY SHUT DOWN IN THE EVENT OF A FIRE.
 2. ALL INDEPENDENT VENTILATION FANS (EXTRACT AND FRESH AIR) TO BE CONNECTED VIA TRAPS. TRAPS TO BE CONFIRMED BY ENGINEER PRIOR TO SETTING.
 3. ALL DUCTING SIZES SHOWN ARE SHEET METAL SIZES. DUCTING TO BE MANUFACTURED ACCORDING TO AMCA. SIZES & TO BE EXTERNALLY INSULATED WITH 15MM THERMAFLEX.
 4. ALL AC DUCTWORK (SUPPLY & RETURN) TO BE EXTERNALLY INSULATED WITH 15MM THERMAFLEX WITH 15MM SONIC LINER (AS INDICATED). FRESH AIR AND EXTRACT AIR DUCTWORK TO BE UNINSULATED. ALL EXPOSED DUCTWORK AND DIFFUSION PRODUCTS TO BE PAINTED TO ARCHITECT'S APPROVAL.
 5. ALL HANGERS AND BRACKETS TO BE GALVANNEED.
 6. ALL ELECTRICS TO BE HUNG ON 6.3x6 CHANNEL TRAPEZE HANGERS WITH #8 RODS. RODS ARE TO BE CUT SHORT BEYOND THE DUCT HANGER TO PREVENT DAMAGE TO THE CEILING TILES WHEN LIFTED. THE ENDS ARE TO BE COIL GALVANNEED.
 7. ALL GRILLES AND SUPPLY AIR DIFFUSERS ARE TO BE SECRET FINISHES.
 8. ALL WEATHER LOUVRES SHALL HAVE COUNTERSUNK FRAMES AND PHILLIPS HEAD COUNTERSUNK SCREWS.
 9. THE MAXIMUM LENGTH OF FLEXIBLE DUCTING IS TO BE 5000mm.
 10. ALL PIPEWORK CONNECTIONS TO EQUIPMENT MUST BE WITH FLANGES.
 11. REFRIGERANT PIPES MUST BE INSULATED WITH THERMAFLEX INSULATION TAPES (ASBO TAPES) MUST BE OF THE ARMOR EX TYPE. AS NO DUCT TAPE WILL BE ACCEPTED. ALL PIPEWORK BE RUN NEATLY IN CABLE TRAYS.
 12. ALL AC CONDENSATE DRAIN PIPES TO BE CONNECTED TO THE NEAREST DRAIN POINT. MAINLINE TO BE 600mm WITH 50mm CONNECTION TO THE INDIVIDUAL ROOM UNITS. ALL PIPING TO HAVE A FALL OF 1:80. ALL DRAIN PIPING TO BE THERMAFLEX INSULATED TO PREVENT CONDENSATION. ALL DRAIN PIPES TO HAVE A TRAP BEFORE CONNECTING TO THE VENT STACK PIPES BY HVAC CONTRACTOR.
 13. ALL ROUTING AND DIMENSIONS TO BE CONFIRMED ON SITE PRIOR TO INSTALLATION.
 14. ALL MECHANICAL EQUIPMENT TO HAVE POWER SUPPLIES AND EQUIPMENT MORE THAN 1.0m AWAY FROM EQUIPMENT ELECTRICAL TERMINALS. NO ANY ISOLATOR EXPOSED TO THE ELEMENTS MUST BE WEATHERPROOF. REFER TO SCHEDULES FOR RUNNING LOADS.

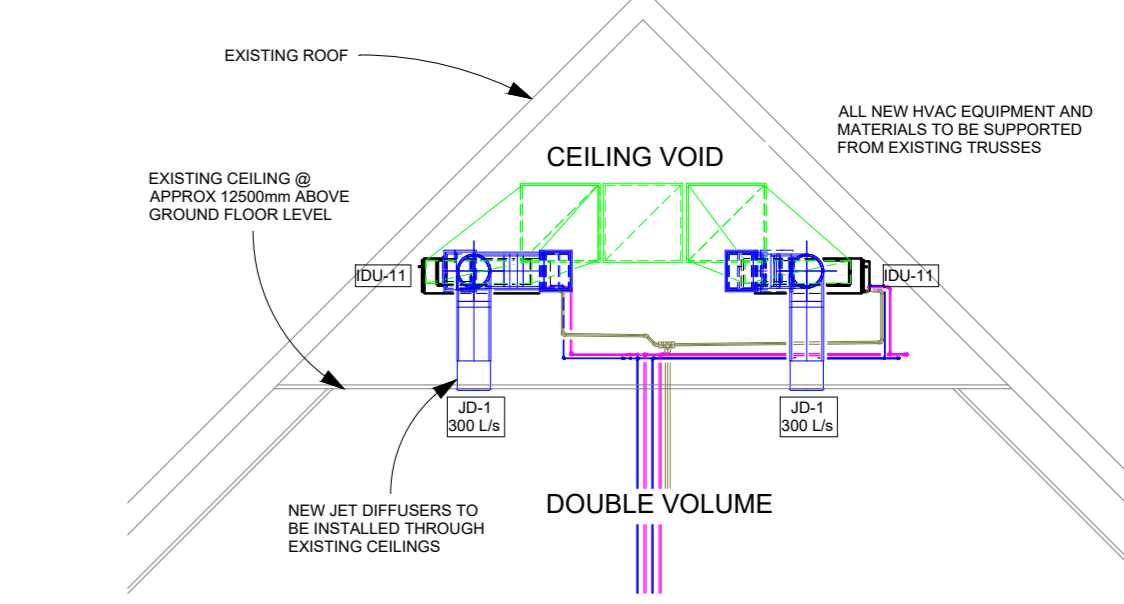


AC & FAN SCHEDULE (1)									
REF NO.	DESCRIPTION	MODEL	COOLING CAPACITY	AIR FLOW	ESP	WEIGHT	RATED CURRENT	MOUNTING POSITION	
ODU-1	1 "LG MULTI VSP VRF OUTDOOR UNIT - HEAT PUMP"	ARUM100TES	28 kW	-	-	240 kg	3Ph, 400V, 50Hz, 28A	ROOF - SUPPORT REQUIRED	
ODU-2	2 "LG MULTI VSP VRF OUTDOOR UNIT - HEAT PUMP"	ARUM120TES	33.6 kW	-	-	240 kg	3Ph, 400V, 50Hz, 28A	ROOF - SUPPORT REQUIRED / BALCONY - PLINTH REQUIRED	
ODU-3	1 "LG MULTI VSP VRF OUTDOOR UNIT - HEAT PUMP"	ARUM100TES	28 kW	-	-	240 kg	3Ph, 400V, 50Hz, 28A	ROOF - SUPPORT REQUIRED	
ODU-4	2 "LG MULTI VSP VRF OUTDOOR UNIT - HEAT PUMP"	ARUM100TES	56 kW	-	-	330 kg	3Ph, 400V, 50Hz, 45A	ROOF - SUPPORT REQUIRED / BALCONY - PLINTH REQUIRED	
ODU-5	1 "LG MULTI VSP VRF OUTDOOR UNIT - HEAT RECOVERY"	ARUM000TES	56 kW	-	-	330 kg	3Ph, 400V, 50Hz, 45A	BALCONY - PLINTH REQUIRED	
IDU-1	1 "LG MULTI VSP VRF INDOOR UNIT - MID-WALL"	ARNJURGSJWA	2.8 kW	-	-	10 kg	1Ph, 230V, 50Hz, 0.1A	WALL	
IDU-3	1 "LG MULTI VSP VRF INDOOR UNIT - MID-WALL"	ARNJUSGSJWA	4.5 kW	-	-	10 kg	1Ph, 230V, 50Hz, 0.2A	WALL	
IDU-5	1 "LG MULTI VSP VRF INDOOR UNIT - MID-WALL"	ARNJZGSJWA	7.1 kW	-	-	15 kg	1Ph, 230V, 50Hz, 0.2A	WALL	
IDU-6	3 "LG MULTI VSP VRF INDOOR UNIT - MID-WALL"	ARNJUSGSJWA	10.4 kW	-	-	20 kg	1Ph, 230V, 50Hz, 0.4A	WALL	
IDU-8	1 "LG MULTI VSP VRF INDOOR UNIT - CEILING CASSETTE"	ARNJUSGTOCA	2.8 kW	-	-	15 kg	1Ph, 230V, 50Hz, 0.1A	SOFFIT / TRUSS	
IDU-9	2 "LG MULTI VSP VRF INDOOR UNIT - CEILING CASSETTE"	ARNJUSGTOCA	4.5 kW	-	-	20 kg	1Ph, 230V, 50Hz, 0.2A	SOFFIT / TRUSS	
IDU-10	1 "LG MULTI VSP VRF INDOOR UNIT - CEILING CASSETTE"	ARNJUSGTOCA	5.6 kW	-	-	20 kg	1Ph, 230V, 50Hz, 0.2A	SOFFIT / TRUSS	
IDU-11	4 "LG MULTI VSP VRF INDOOR UNIT - FRESH AIR INTAKE"	ARNJURGSBZA	28 kW	395 m³/h	216 Pa	60 kg	1Ph, 230V, 50Hz, 1.6A	TRUSS	
HRU-1	1 "LG MULTI VSP VRF HEAT RECOVERY BOX - 8 PORT"	PHRHR08A	-	-	-	35 kg	1Ph, 230V, 50Hz, 0.4A	TRUSS	
HRU-2	1 "LG MULTI VSP VRF HEAT RECOVERY BOX - 8 PORT"	PHRHR08A	-	-	-	35 kg	1Ph, 230V, 50Hz, 0.4A	TRUSS	
SU-1	1 SPLIT UNIT - MID-WALL	M2AAKH	6.45 kW	-	-	45 kg (OD) + 15 kg (ID)	1Ph, 230V, 50Hz, 10A	WALL / WALL	
SF-1	2 "SYSTEMAIR" SUPPLY AIR FAN - CIRCULAR INLINE FAN	Pho Sitem XP 150EC	-	90-145 m³/h	200 Pa	5 kg	1Ph, 230V, 50Hz, 1A	SOFFIT / TRUSS	
SF-2	1 "SYSTEMAIR" SUPPLY AIR FAN - CIRCULAR INLINE FAN	Pho S15 EC	-	880 m³/h	200 Pa	10 kg	1Ph, 230V, 50Hz, 2.5A	SOFFIT	
EF-2	2 "XPELAF" WINDOW MOUNTED EXTRACTOR FAN	GX9	-	145 m³/h	-	2 kg	1Ph, 230V, 50Hz, 0.1A	WINDOW	
EF-3	3 "XPELAF" WINDOW MOUNTED EXTRACTOR FAN	GX9	-	171 m³/h	-	5 kg	1Ph, 230V, 50Hz, 0.2A	WINDOW	

AIR DISTRIBUTION EQUIPMENT SCHEDULE (1)				
REF NO.	DESCRIPTION	SIZE	MODEL	COMMENTS
SG-1	1 "PROX" SUPPLY AIR, DOUBLE DEFLECTION GRILLE CW PLENUM & O.B.D.	250x250	AT	
SG-2	2 "PROX" SUPPLY, DOUBLE DEFLECTION GRILLE CW PLENUM & O.B.D.	300x250	AT	
SG-4	3 "PROX" SUPPLY, DOUBLE DEFLECTION GRILLE CW PLENUM & O.B.D.	550x250	AT	
JD-1	8 "PROX" JET DRIVER, ADJUSTABLE CW EXTERNAL ELECTRIC ACTUATOR & CONTROLS	400x	DUN-A-14 Oo-Po	
RAFF-1	1 "PROX" RETURN AIR GRILLE CW HINGED FRAME, PLENUM, FILTER AND O.B.D.	1200x600	Z-LVS-200	0200mm SPIGOT/DUCT/FLEX
WL-1	1 ALUMINUM WEATHER LOUVER CW W.M.S.	200x500	AWR	
WL-2	2 ALUMINUM WEATHER LOUVER CW W.M.S.	250x250	AWR	
WL-3	5 ALUMINUM WEATHER LOUVER CW W.M.S.	100x100	AWR	
ELD-1	1 EXISTING LOUVER DOOR TO BE REFURBISHED.	3000x1500	-	PAINTED TO MATCH ARCHITECTS APPROVAL

DUCT ACCESSORY SCHEDULE (1)		
REF NO.	DESCRIPTION	SIZE
FF-1	1 FRESH AIR PRIMARY FILTER CW SLIDING FRAME	200x550
FF-2	2 FRESH AIR PRIMARY FILTER CW SLIDING FRAME	250x250
FF-3	4 FRESH AIR PRIMARY FILTER CW SLIDING FRAME	1000x1000
ATT-1	2 ROUND SOUND ATTENUATOR	0315x030L
ATT-2	4 RECTANGULAR SOUND ATTENUATOR	300x600x030L
BD-1	1 BALANCING DAMPER	250x350
BD-3	1 BALANCING DAMPER	350x350

CONTROLLER SCHEDULE (1)	
REF. NO.	DESCRIPTION
CI-1	1 LG STANDARD WALL CONTROLLER



1 First Floor
1:100

3 Section 1
1:100