



Location on the corner of Cavenish Gardens Street.

Streetscape, the building is not visible.



North elevation, veranda with asymmetrical gable



Veranda with the side veranda enclosed.



Asymmetrical gable with bay window.



South elevation with inappropriate addition.



Outbuildings.



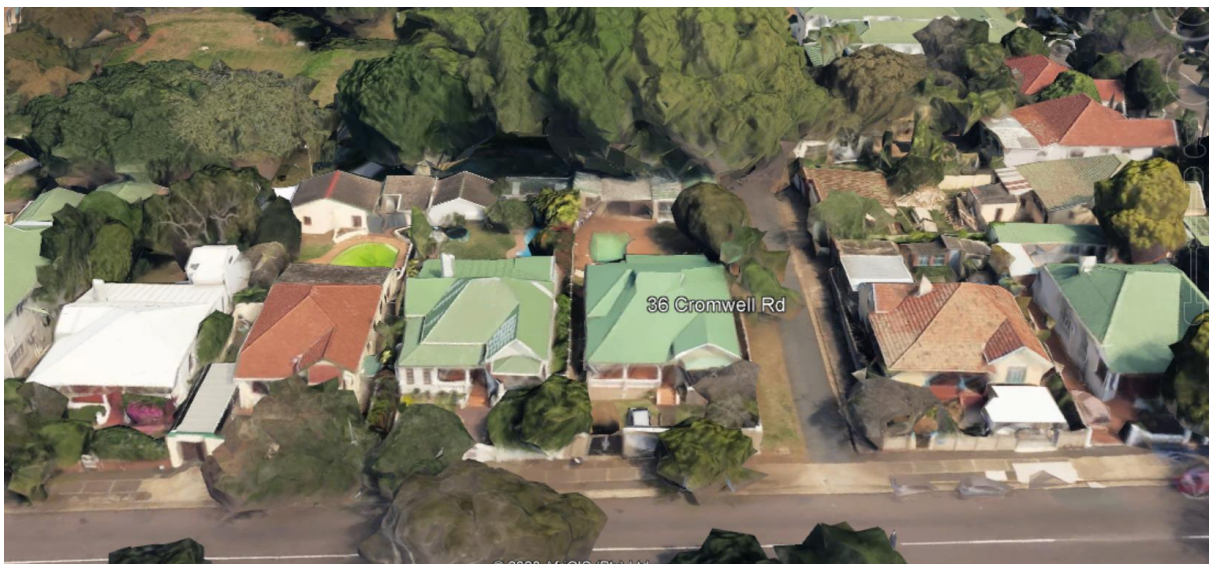
Inappropriate internal alterations



Interior



This house has been reroofed as a single entity. The veranda roof has been incorporated into the main roof.



This property has three road frontages. The park is a great benefit to this precinct.