

GENERIC ENVIRONMENTAL MANAGEMENT PROGRAMME (EMPr) FOR THE DEVELOPMENT AND EXPANSION OF SUBSTATION INFRASTRUCTURE FOR THE TRANSMISSION AND DISTRIBUTION OF ELECTRICITY





environmental affairs

Department:
Environmental Affairs
REPUBLIC OF SOUTH AFRICA

TABLE OF CONTENTS

INTRODUCTION 1

1. Background 1

2. Purpose 1

3. Objective 1

4. Scope 1

5. Structure of this document 2

6. Completion of part B: section 1: the pre-approved generic EMPr template 4

7. Amendments of the impact management outcomes and impact management actions 4

8.	Documents to be submitted as part of part B: section 2 site specific information and declaration	5
(i)	Amendments to Part B: Section 2 – site specific information and declaration	5
PART A – GENERAL INFORMATION		2
1.	DEFINITIONS	2
2.	ACRONYMS and ABBREVIATIONS	3
3.	ROLES AND RESPONSIBILITIES FOR ENVIRONMENTAL MANAGEMENT PROGRAMME (EMPr) IMPLEMENTATION	4
4.	ENVIRONMENTAL DOCUMENTATION REPORTING AND COMPLIANCE	10
4.1	Document control/Filing system	10
4.2	Documentation to be available	10
4.3	Weekly Environmental Checklist	10
4.4	Environmental site meetings	11
4.5	Required Method Statements	11
4.6	Environmental Incident Log (Diary)	12
4.7	Non-compliance	12
4.8	Corrective action records	13
4.9	Photographic record	13
4.10	Complaints register	14
4.11	Claims for damages	14
4.12	Interactions with affected parties	14
4.13	Environmental audits	15
4.14	Final environmental audits	15
PART B: SECTION 1: Pre-approved generic EMPr template		16
5.	IMPACT MANAGEMENT OUTCOMES AND IMPACT MANAGEMENT ACTIONS	16
5.1	Environmental awareness training	17
5.2	Site Establishment development	18
5.3	Access restricted areas	19
5.4	Access roads	20
5.5	Fencing and Gate installation	21
5.6	Water Supply Management	23
5.7	Storm and waste water management	24
5.8	Solid and hazardous waste management	25
5.9	Protection of watercourses and estuaries	26
5.10	Vegetation clearing	27
5.11	Protection of fauna	29
5.12	Protection of heritage resources	30

5.13	Safety of the public.....	31
5.14	Sanitation	31
5.15	Prevention of disease	33
5.16	Emergency procedures.....	33
5.17	Hazardous substances	34
5.18	Workshop, equipment maintenance and storage.....	37
5.19	Batching plants.....	38
5.20	Dust emissions	39
5.21	Blasting.....	40
5.22	Noise	41
5.23	Fire prevention	42
5.24	Stockpiling and stockpile areas.....	42
5.25	Civil works	43
5.26	Excavation of foundation, cable trenching and drainage systems.....	44
5.27	Installation of foundations, cable trenching and drainage systems	45
5.28	Installation of equipment (circuit breakers, current Transformers, Isolators, Insulators, surge arresters, voltage transformers, earth switches)	46
5.30	Cabling and Stringing	47
5.31	Testing and Commissioning (all equipment testing, earthing system, system integration)	48
5.32	Socio-economic	48
5.33	Temporary closure of site	49
5.34	Dismantling of old equipment	50
5.35	Landscaping and rehabilitation.....	51
6	ACCESS TO THE GENERIC EMPr	53
PART B: SECTION 2		54
7	SITE SPECIFIC INFORMATION AND DECLARATION.....	54
7.1	Sub-section 1: contact details and description of the project	54
7.2	Sub-section 2: Development footprint site map	55
7.3	Sub-section 3: Declaration	55
7.4	Sub-section 4: amendments to site specific information (Part B; section 2)	56
PART C		57
8	SITE SPECIFIC ENVIRONMENTAL ATTRIBUTES	57
APPENDIX 1: METHOD STATEMENTS.....		64

List of tables

Table 1: Guide to roles and responsibilities for implementation of a generic EMPr.....	4
--	---

INTRODUCTION

1. Background

The National Environmental Management Act, 1998 (Act No. 107 of 1998) (NEMA) requires that an environmental management programme (EMPr) be submitted where an environmental impact assessment (EIA) has been identified as the environmental instrument to be utilised as the basis for a decision on an application for environmental authorisation (EA). The content of an EMPr must either contain the information set out in Appendix 4 of the Environmental Impact Assessment Regulations, 2014, as amended (EIA Regulations) or must be a generic EMPr relevant to an application as identified and gazetted by the Minister in a government notice. Once the Minister has identified, through a government notice that a generic EMPr is relevant to an application for EA, that generic EMPr must be applied by all parties involved in the EA process, including but not limited to the applicant and the competent authority (CA).

2. Purpose

This document constitutes a generic EMPr relevant to applications for the development or expansion of substation infrastructure for the transmission and distribution of electricity, and all listed and specified activities necessary for the realisation of such infrastructure.

3. Objective

The objective of this generic EMPr is to prescribe and pre-approve generally accepted impact management outcomes and impact management actions, which can commonly and repeatedly be used for the avoidance, management and mitigation of impacts and risks associated with the development or expansion of substation infrastructure for the transmission and distribution of electricity. The use of a generic EMPr is intended to reduce the need to prepare and review individual EMPrs for applications of a similar nature.

4. Scope

The scope of this generic EMPr applies to the development or expansion of substation infrastructure for the transmission and distribution of electricity requiring EA in terms of NEMA. This generic EMPr applies to activities requiring EA, mainly activity 11 and 47 of the Environmental Impact Assessment Regulations Listing Notice 1 of 2014, as amended, and activity 9 of the Environmental Impact Assessment Regulations Listing Notice 2 of 2014, as amended, and all associated listed or specified activities necessary for the realization of such infrastructure.

5. Structure of this document

This document is structured in three parts with an Appendix as indicated in the table below:

Part	Section	Heading	Content
A		Provides general guidance and information and is not legally binding	Definitions, acronyms, roles & responsibilities and documentation and reporting.
B	1	Pre-approved generic EMPr template	<p>Contains generally accepted impact management outcomes and impact management actions required for the avoidance, management and mitigation of impacts and risks associated with the development or expansion of substation infrastructure for the transmission and distribution of electricity, which are presented in the form of a template that has been pre-approved.</p> <p>The template in this section is to be completed by the contractor, with each completed page signed and dated by the holder of the EA prior to commencement of the activity.</p> <p>Where an impact management outcome is not relevant, the words "not applicable" can be inserted in the template under the "responsible persons" column.</p> <p>Once completed and signed, the template represents the EMPr for the activity approved by the CA and is legally binding. The template is not required to be submitted to the CA as once the generic EMPr is gazetted for implementation, it has been approved by the CA.</p> <p>To allow interested and affected parties access to the pre-approved EMPr template for consideration through the decision-making process, the EAP on behalf of the applicant /proponent must make the hard copy of this EMPr available at a public location and where the applicant has a website, the EMPr should also be made available on such publicly accessible website.</p>
	2	Site specific information	Contains preliminary infrastructure layout and a declaration that the applicant/holder of the EA

Part	Section	Heading	Content
			<p>will comply with the pre-approved generic EMPr template contained in <u>Part B: Section 1</u>, and understands that the impact management outcomes and impact management actions are legally binding. The preliminary infrastructure layout must be finalized to inform the final EMPr that is to be submitted with the basic assessment report (BAR) or environmental impact assessment report (EIAR), ensuring that all impact management outcomes and impact management actions have been either pre-approved or approved in terms of <u>Part C</u>.</p> <p>This section must be submitted to the CA together with the final BAR or EIAR. The information submitted to the CA will be considered to be incomplete should a signed copy of <u>Part B: section 2</u> not be submitted. Once approved, this Section forms part of the EMPr for the development and is legally binding.</p>
C		Site specific sensitivities/ attributes	<p>If any specific environmental sensitivities/ attributes are present on the site which require site specific impact management outcomes and impact management actions, not included in the pre-approved generic EMPr, to manage impacts, these specific impact management outcomes and impact management actions must be included in this section. These specific environmental attributes must be referenced spatially and impact management outcomes and impact management actions must be provided. These specific impact management outcomes and impact management actions must be presented in the format of the pre-approved EMPr template (<u>Part B: section 1</u>)</p> <p>This section will not be required should the site contain no specific environmental sensitivities or attributes. However, if <u>Part C</u> is applicable to the site, it is required to be submitted together with the BAR or EIAR, for consideration of, and decision on, the application for EA. The</p>

Part	Section	Heading	Content
			<p>information in this section must be prepared by an EAP and must contain his/her name and expertise including a curriculum vitae. Once approved, Part C forms part of the EMPr for the site and is legally binding.</p> <p>This section applies only to additional impact management outcomes and impact management actions that are necessary for the avoidance, management and mitigation of impacts and risks associated with the specific development or expansion and which are not already included in <u>Part B: section 1</u>.</p>
		Appendix 1	Contains the method statements to be prepared prior to commencement of the activity. The method statements are not required to be submitted to the competent authority.

6. Completion of part B: section 1: the pre-approved generic EMPr template

The template is to be completed prior to commencement of the activity, by providing the following information for each environmental impact management action:

- For implementation
 - a 'responsible person',
 - a method for implementation,
 - a timeframe for implementation
- For monitoring
 - a responsible person
 - frequency
 - evidence of compliance.

The completed template must be signed and dated by the holder of the EA prior to commencement of the activity. The method statements prepared and agreed to by the holder of the EA must be appended to the template as Appendix 1. Each method statement must be signed and dated on each page by the holder of the EA. This template once signed and dated is legally binding. The holder of the EA will remain responsible for its implementation.

7. Amendments of the impact management outcomes and impact management actions

Once the activity has commenced, a holder of an EA may make amendments to the impact management outcomes and impact management actions in the following manner:

- Amendment of the impact management outcomes: in line with the process contemplated in Regulation 37 of the EIA Regulations; and
- Amendment of the impact management actions: in line with the process contemplated in Regulation 36 of the EIA Regulations.

8. Documents to be submitted as part of part B: section 2 site specific information and declaration

Part B: Section 2 has three distinct sub-sections. The first and third sub-sections are in a template format. Sub-section two requires a map to be produced.

Sub-section 1 contains the project name, the applicant's name and contact details, the site information, which includes coordinates of the property or farm in which the proposed substation infrastructure is proposed as well as the 21-digit Surveyor General code of each cadastral land parcel and, where available, the farm name.

Sub-section 2 is to be prepared by an EAP and must contain his/her name and expertise including a curriculum vitae. This sub-section must include a map of the site sensitivity overlaid with the preliminary infrastructure layout using the national web based environmental screening tool, when available for compulsory use at: <https://screening.environment.gov.za/screeningtool>. The sensitivity map shall identify the nature of each sensitive feature e.g. threatened plant species, archaeological site, etc. Sensitivity maps shall identify features both within the planned working area and any known sensitive features and within 50 m from the development footprint.

Sub-section 3 is the declaration that the applicant (s)/proponent (s) or holder of the EA in the case of a change of ownership must complete which confirms that the applicant/EA holder will comply with the pre-approved 'generic EMPr' template in Section 1 and understands that the impact management outcomes and impact management actions are legally binding.

(a) Amendments to Part B: Section 2 – site specific information and declaration

Should the EA be transferred, Part B: Section 2 must be completed by the new applicant/proponent and submitted with the application for an amendment of the EA in terms of regulations 29 or 31 of the EIA Regulations, whichever applies. The information submitted as part of such an application for an amendment to an EA will be considered to be incomplete should a signed copy of Part B: Section 2 not be submitted. Once approved, Part B: Section 2 forms part of the EMPr for the development and the EMPr becomes legally binding to the new EA holder.

PART A – GENERAL INFORMATION

1. DEFINITIONS

In this EMPr any word or expression to which a meaning has been assigned in the NEMA or EIA Regulations has that meaning, and unless the context requires otherwise –

"clearing" means the clearing and removal of vegetation, whether partially or in whole, including trees and shrubs, as specified;

"construction camp" is the area designated for key construction infrastructure and services, including but not limited to offices, overnight vehicle parking areas, stores, the workshop, stockpile and lay down areas, hazardous storage areas (including fuels), the batching plant (if one is located at the construction camp), designated access routes, equipment cleaning areas and the placement of staff accommodation, cooking and ablution facilities, waste and wastewater management;

"contractor" - The Contractor has overall responsibility for ensuring that all work, activities, and actions linked to the delivery of the contract, are in line with the Environmental Management Programme and that Method Statements are implemented as described.

"hazardous substance" is a substance governed by the Hazardous Substances Act, 1973 (Act No. 15 of 1973) as well as the Hazardous Chemical and Substances Regulations, 1995;

"method statement" means a written submission by the Contractor to the Project Manager in response to this EMPr or a request by the Project Manager and ECO. The method statement must set out the equipment, materials, labour and method(s) the Contractor proposes using to carry out an activity identified by the Project Manager when requesting the Method Statement. This must be done in such detail that the Project Manager and ECO is able to assess whether the Contractor's proposal is in accordance with this specification and/or will produce results in accordance with this specification;

The method statement must cover as a minimum applicable details with regard to:

- (i) Construction procedures;
- (ii) Plant, materials and equipment to be used;
- (iii) Transporting the equipment to and from site;
- (iv) How the plant/ material/ equipment will be moved while on site;
- (v) How and where the plant/ material/ equipment will be stored;
- (vi) The containment (or action to be taken if containment is not possible) of leaks or spills of any liquid or material that may occur;
- (vii) Timing and location of activities;
- (viii) Compliance/ non-compliance; and
- (ix) Any other information deemed necessary by the Project Manager.

“**slope**” means the inclination of a surface expressed as one unit of rise or fall for so many horizontal units;

“**solid waste**” means all solid waste, including construction debris, hazardous waste, excess cement/ concrete, wrapping materials, timber, cans, drums, wire, nails, food and domestic waste (e.g. plastic packets and wrappers);

“**spoil**” means excavated material which is unsuitable for use as material in the construction works or is material which is surplus to the requirements of the construction works;

“**topsoil**” means a varying depth (up to 300 mm) of the soil profile irrespective of the fertility, appearance, structure, agricultural potential, fertility and composition of the soil;

“**works**” means the works to be executed in terms of the Contract

2. ACRONYMS and ABBREVIATIONS

CA	Competent Authority
cEO	Contractors Environmental Officer
dEO	Developer Environmental Officer
DPM	Developer Project Manager
DSS	Developer Site Supervisor
EAR	Environmental Audit Report
ECA	Environmental Conservation Act No. 73 of 1989
ECO	Environmental Control Officer
EA	Environmental Authorisation
EIA	Environmental Impact Assessment
ERAP	Emergency Response Action Plan
EMPr	Environmental Management Programme Report
EAP	Environmental Assessment Practitioner
FPA	Fire Protection Agency
HCS	Hazardous chemical Substance
NEMA	National Environmental Management Act, 1998 (Act No. 107 of 1998)
NEMBA	National Environmental Management: Biodiversity Act ,2004 (Act No. 10 of 2004)
NEMWA	National Environmental Management: Waste Act, 2008 (Act No. 59 of 2008)
MSDS	Material Safety Data Sheet
RI&AP's	Registered Interested and affected parties

3. ROLES AND RESPONSIBILITIES FOR ENVIRONMENTAL MANAGEMENT PROGRAMME (EMPr) IMPLEMENTATION

The effective implementation of this generic EMPr is dependent on established and clear roles, responsibilities and reporting lines within an institutional framework. This section of the EMPr gives guidance to the various environmental roles and reporting lines, however, project specific requirements will ultimately determine the need for the appointment of specific person(s) to undertake specific roles and or responsibilities. As such, it must be noted that in the event that no specific person, for example, an environmental control officer (ECO) is appointed, the holder of the EA remains responsible for ensuring that the duties indicated in this document for action by the ECO are undertaken.

Table 1: Guide to roles and responsibilities for implementation of an EMPr

Responsible Person(s)	Role and Responsibilities
Developer's Project Manager (DPM)	<p><u>Role</u></p> <p>The Project Developer is accountable for ensuring compliance with the EMPr and any conditions of approval from the competent authority (CA). Where required, an environmental control officer (ECO) must be contracted by the Project Developer to objectively monitor the implementation of the EMPr according to relevant environmental legislation, and the conditions of the environmental authorisation (EA). The Project Developer is further responsible for providing and giving mandate to enable the ECO to perform responsibilities, and he must ensure that the ECO is integrated as part of the project team while remaining independent.</p> <p><u>Responsibilities</u></p> <ul style="list-style-type: none"> - Be fully conversant with the conditions of the EA; - Ensure that all stipulations within the EMPr are communicated and adhered to by the Developer and its Contractor(s); - Issuing of site instructions to the Contractor for corrective actions required; - Monitor the implementation of the EMPr throughout the project by means of site inspections and meetings. Overall management of the project and EMPr implementation; and - Ensure that periodic environmental performance audits are undertaken on the project implementation.

Responsible Person(s)	Role and Responsibilities
Developer Site Supervisor (DSS)	<p><u>Role</u> The DSS reports directly to the DPM, oversees site works, liaises with the contractor(s) and the ECO. The DSS is responsible for the day to day implementation of the EMPr and for ensuring the compliance of all contractors with the conditions and requirements stipulated in the EMPr.</p> <p><u>Responsibilities</u></p> <ul style="list-style-type: none"> - Ensure that all contractors identify a contractor's Environmental Officer (cEO); - Must be fully conversant with the conditions of the EA. Oversees site works, liaison with Contractor, DPM and ECO; - Must ensure that all landowners have the relevant contact details of the site staff, ECO and cEO; - Issuing of site instructions to the Contractor for corrective actions required; - Will issue all non-compliances to contractors; and - Ratify the Monthly Environmental Report.
Environmental Control Officer (ECO)	<p><u>Role</u> The ECO should have appropriate training and experience in the implementation of environmental management specifications. The primary role of the ECO is to act as an independent quality controller and monitoring agent regarding all environmental concerns and associated environmental impacts. In this respect, the ECO is to conduct periodic site inspections, attend regular site meetings, pre-empt problems and suggest mitigation and be available to advise on incidental issues that arise. The ECO is also required to conduct compliance audits, verifying the monitoring reports submitted by the cEO. The ECO provides feedback to the DSS and Project Manager regarding all environmental matters. The Contractor, cEO and dEO are answerable to the Environmental Control Officer for non-compliance with the Performance Specifications as set out in the EA and EMPr.</p> <p>The ECO provides feedback to the DSS and Project Manager, who in turn reports back to the Contractor and potential and Registered Interested & Affected Parties' (RI&AP's), as required. Issues of non-compliance raised by the ECO must be taken up by the Project Manager, and resolved with the Contractor as per the conditions of his contract. Decisions regarding environmental procedures, specifications and requirements which have a cost implication (i.e. those that are deemed to be a</p>

Responsible Person(s)	Role and Responsibilities
	<p>variation, not allowed for in the Performance Specification) must be endorsed by the Project Manager. The ECO must also, as specified by the EA, report to the relevant CA as and when required.</p> <p><u>Responsibilities</u></p> <p>The responsibilities of the ECO will include the following:</p> <ul style="list-style-type: none"> - Be aware of the findings and conclusions of all EA related to the development; - Be familiar with the recommendations and mitigation measures of this EMPr; - Be conversant with relevant environmental legislation, policies and procedures, and ensure compliance with them; - Undertake regular and comprehensive site inspections / audits of the construction site according to the generic EMPr and applicable licenses in order to monitor compliance as required; - Educate the construction team about the management measures contained in the EMPr and environmental licenses; - Compilation and administration of an environmental monitoring plan to ensure that the environmental management measures are implemented and are effective; - Monitoring the performance of the Contractors and ensuring compliance with the EMPr and associated Method Statements; - In consultation with the Developer Site Supervisor order the removal of person(s) and/or equipment which are in contravention of the specifications of the EMPr and/or environmental licenses; - Liaison between the DPM, Contractors, authorities and other lead stakeholders on all environmental concerns; - Compile a regular environmental audit report highlighting any non-compliance issues as well as satisfactory or exceptional compliance with the EMPr; - Validating the regular site inspection reports, which are to be prepared by the contractor Environmental Officer (cEO); - Checking the cEO's record of environmental incidents (spills, impacts, legal transgressions etc.) as well as corrective and preventive actions taken; - Checking the cEO's public complaints register in which all complaints are recorded, as well as action taken;

Responsible Person(s)	Role and Responsibilities
	<ul style="list-style-type: none"> - Assisting in the resolution of conflicts; - Facilitate training for all personnel on the site – this may range from carrying out the training, to reviewing the training programmes of the Contractor; - In case of non-compliances, the ECO must first communicate this to the Senior Site Supervisor, who has the power to ensure this matter is addressed. Should no action or insufficient action be taken, the ECO may report this matter to the authorities as non-compliance; - Maintenance, update and review of the EMPr; - Communication of all modifications to the EMPr to the relevant stakeholders.
<p>developer Environmental Officer (dEO)</p>	<p><u>Role</u></p> <p>The dEOs will report to the Project Manager and are responsible for implementation of the EMPr, environmental monitoring and reporting, providing environmental input to the Project Manager and Contractor’s Manager, liaising with contractors and the landowners as well as a range of environmental coordination responsibilities.</p> <p><u>Responsibilities</u></p> <ul style="list-style-type: none"> - Be fully conversant with the EMPr; - Be familiar with the recommendations and mitigation measures of this EMPr, and implement these measures; - Ensure that all stipulations within the EMPr are communicated and adhered to by the Employees, Contractor(s) ; - Confine the development site to the demarcated area; - Conduct environmental internal audits with regards to EMPr and authorisation compliance (on cEO); - Assist the contractors in addressing environmental challenges on site; - Assist in incident management: - Reporting environmental incidents to developer and ensuring that corrective action is taken, and lessons learnt shared; - Assist the contractor in investigating environmental incidents and compile investigation reports; - Follow-up on pre-warnings, defects, non-conformance reports;

Responsible Person(s)	Role and Responsibilities
	<ul style="list-style-type: none"> - Measure and communicate environmental performance to the Contractor; - Conduct environmental awareness training on site together with ECO and cEO; - Ensure that the necessary legal permits and / or licenses are in place and up to date; - Acting as Developer's Environmental Representative on site and work together with the ECO and contractor;
Contractor	<p><u>Role</u></p> <p>The Contractor appoints the cEO and has overall responsibility for ensuring that all work, activities, and actions linked to the delivery of the contract are in line with the EMPr and that Method Statements are implemented as described. External contractors must ensure compliance with this EMPr while performing the onsite activities as per their contract with the Project Developer. The contractors are required, where specified, to provide Method Statements setting out in detail how the impact management actions contained in the EMPr will be implemented during the development or expansion of substation infrastructure for the transmission and distribution of electricity activities.</p> <p><u>Responsibilities</u></p> <ul style="list-style-type: none"> - project delivery and quality control for the development services as per appointment; - employ a suitably qualified person to monitor and report to the Project Developer's appointed person on the daily activities on-site during the construction period; - ensure that safe, environmentally acceptable working methods and practices are implemented and that equipment is properly operated and maintained, to facilitate proper access and enable any operation to be carried out safely; - attend on site meeting(s) prior to the commencement of activities to confirm the procedure and designated activity zones; - ensure that contractors' staff repair, at their own cost, any environmental damage as a result of a contravention of the specifications contained in EMPr, to the satisfaction of the ECO.

Responsible Person(s)	Role and Responsibilities
contractor Environmental Officer (cEO)	<p><u>Role</u></p> <p>Each Contractor affected by the EMPr should appoint a cEO, who is responsible for the on-site implementation of the EMPr (or relevant sections of the EMPr). The Contractor's representative can be the site agent; site engineer; a dedicated environmental officer; or an independent consultant. The Contractor must ensure that the Contractor's Representative is suitably qualified to perform the necessary tasks and is appointed at a level such that she/he can interact effectively with other site Contractors, labourers, the Environmental Control Officer and the public. As a minimum the cEO shall meet the following criteria:</p> <p><u>Responsibilities</u></p> <ul style="list-style-type: none"> - Be on site throughout the duration of the project and be dedicated to the project; - Ensure all their staff are aware of the environmental requirements, conditions and constraints with respect to all of their activities on site; - Implementing the environmental conditions, guidelines and requirements as stipulated within the EA, EMPr and Method Statements; - Attend the Environmental Site Meeting; - Undertaking corrective actions where non-compliances are registered within the stipulated timeframes; - Report back formally on the completion of corrective actions; - Assist the ECO in maintaining all the site documentation; - Prepare the site inspection reports and corrective action reports for submission to the ECO; - Assist the ECO with the preparing of the monthly report; and - Where more than one Contractor is undertaking work on site, each company appointed as a Contractor will appoint a cEO representing that company.

4. ENVIRONMENTAL DOCUMENTATION REPORTING AND COMPLIANCE

To ensure accountable and demonstrated implementation of the EMPr, a number of reporting systems, documentation controls and compliance mechanisms must be in place for all substation infrastructure projects as a minimum requirement.

4.1 Document control/Filing system

The holder of the EA is solely responsible for the upkeep and management of the EMPr file. As a minimum, all documentation detailed below will be stored in the EMPr file. A hard copy of all documentation shall be filed, while an electronic copy may be kept where relevant. A duplicate file will be maintained in the office of the DSS (where applicable). This duplicate file must remain current and up-to-date. The filing system must be updated and relevant documents added as required. The EMPr file must be made available at all times on request by the CA or other relevant authorities. The EMPr file will form part of any environmental audits undertaken as prescribed in the EIA Regulations.

4.2 Documentation to be available

At the outset of the project the following preliminary list of documents shall be placed in the filing system and be accessible at all times:

- Full copy of the signed EA from the CA in terms of NEMA, granting approval for the development or expansion;
- Copy of the generic and site specific EMPr as well as any amendments thereof;
- Copy of declaration of implementing generic EMPr and subsequent approval of site specific EMPr and amendments thereof;
- All method statements;
- Completed environmental checklists;
- Minutes and attendance register of environmental site meetings;
- An up-to-date environmental incident log;
- A copy of all instructions or directives issued;
- A copy of all corrective actions signed off. The corrective actions must be filed in such a way that a clear reference is made to the non-compliance record;
- Complaints register.

4.3 Weekly Environmental Checklist

The ECOs are required to complete a Weekly Environmental Checklist, the format of which is to be agreed prior to commencement of the activity. The ECOs are required to sign and date the checklist, retain a copy in the EMPr file and submit a copy of the completed checklist to the DSS on a weekly basis.

The checklists will form the basis for the Monthly Environmental Reports. Copies of all completed checklists will be attached as Annexures to the Environmental Audit Report as required in terms of the EIA Regulations.

4.4 Environmental site meetings

Minutes of the environmental site meetings shall be kept. The minutes must include an attendance register and will be attached to the Monthly Report that is distributed to attendees. Each set of minutes must clearly record "Matters for Attention" that will be reviewed at the next meeting.

4.5 Required Method Statements

The method statement will be done in such detail that the ECOs are enabled to assess whether the contractor's proposal is in accordance with the EMPr.

The method statement must cover applicable details with regard to:

- development procedures;
- materials and equipment to be used;
- getting the equipment to and from site;
- how the equipment/ material will be moved while on site;
- how and where material will be stored;
- the containment (or action to be taken if containment is not possible) of leaks or spills of any liquid or material that may occur;
- timing and location of activities;
- compliance/ non-compliance with the EMPr; and
- any other information deemed necessary by the ECOs.

Unless indicated otherwise by the Project Manager, the Contractor shall provide the following method statements to the Project Manager no less than 14 days prior to the commencement date of the activity:

- Site establishment – Camps, Lay-down or storage areas, satellite camps, infrastructure;
- Batch plants;
- Workshop or plant servicing;
- Handling, transport and storage of Hazardous Chemical Substance's;
- Vegetation management – Protected, clearing, aliens, felling;
- Access management – Roads, gates, crossings etc.;
- Fire plan;
- Waste management – transport, storage, segregation, classification, disposal (all waste streams);
- Social interaction – complaints management, compensation claims, access to properties etc.;
- Water – use (source, abstraction and disposal), access and all related information, crossings and mitigation;
- Emergency preparedness – Spills, training, other environmental emergencies;
- Dust and noise management methodologies;
- Fauna interaction and risk management – only if the risk was identified – wildlife interaction especially on game farms; and
- Heritage and palaeontology management.

The ECOs shall monitor and ensure that the contractors perform in accordance with these method statements. Completed and agreed method statements between the holder of the EA and the contractor shall be captured in Appendix 1.

4.6 Environmental Incident Log (Diary)

The ECOs are required to maintain an up-to-date and current Environmental Incident Log (environmental diary). The Environmental Incident Log is a means to record all environmental incidents and/or all non-compliance notice would not be issued. An environmental incident is defined as:

- Any deviation from the listed impact management actions (listed in this EMPr) that may be addressed immediately by the ECOs. (For example a contractor's staff member littering or a drip tray that has not been emptied);
- Any environmental impact resulting from an action or activity by a contractor in contravention of the environmental stipulations and guidelines listed in the EMPr which as a single event would have a minor impact but which if cumulative and continuous would have a significant effect (for example no toilet paper available in the ablutions for an afternoon); and
- General environmental information such as road kills or injured wildlife.

The ECOs are to record all environmental incidents in the Environmental Incident Log. All incidents regardless of severity must be reported to the Developer. The Log is to be kept in the EMPr file and at a minimum the following will be recorded for each environmental incident:

- The date and time of the incident;
- Description of the incident;
- The name of the Contractor responsible;
- The incident must be listed as significant or minor;
- If the incident is listed as significant, a non-compliance notice must be issued, and recorded in the log;
- Remedial or corrective action taken to mitigate the incident; and
- Record of repeat minor offences by the same contractor or staff member.

The Environmental Incident Log will be captured in the EAR.

4.7 Non-compliance

A non-compliance notice will be issued to the responsible contractor by the ECOs via the DSS or Project Manager. The non-compliance notice will be issued in writing; a copy filed in the EMPr file and will at a minimum include the following:

- Time and date of the non-compliance;
- Name of the contractor responsible;
- Nature and description of the non-compliance;
- Recommended / required corrective action; and
- Date by which the corrective action to be completed.
- The contractors shall act immediately when a notice of non-compliance is received and correct whatever is the cause for the issuing of the notice.

Complaints received regarding activities on the development site pertaining to the environment shall be recorded in a dedicated register and the response noted with the date and action taken. The ECO should be made aware of any complaints. Any non-compliance with the agreed procedures of the EMPr is a transgression of the various statutes and laws that define the manner by which the environment is managed. Failure to redress the cause shall be reported to the relevant CA for them to deal with the transgression, as it deems fit. The contractor is deemed not to have complied with the EMPr if, inter alia, There is a deviation from the environmental conditions, impact management outcomes and impact management actions activities, as approved in generic and site specific EMPr as relevant as set out in the EMPr, which deviation has, or may cause, an environmental impact.

4.8 Corrective action records

For each non-compliance notice issued, a documented corrective action must be recorded. On receiving a non-compliance notice from the DSS, the contractor's cEO will ensure that the corrective actions required take place within the stipulated timeframe. On completion of the corrective action the cEO is to issue a Corrective Action Report in writing to the ECOs. If satisfied that the corrective action has been completed, the ECOs are to sign-off on the Corrective Action Report, and attach the report to the non-compliance notice in the EMPr file. A corrective action is considered complete once the report has signed off by the ECOs.

4.9 Photographic record

A digital photographic record will be kept. The photographic record will be used to show before, during and post rehabilitation evidence of the project as well used in cases of damages claims if they arise. Each image must be dated and a brief description note attached.

The Contractor shall:

1. Allow the ECOs access to take photographs of all areas, activities and actions.

The ECOs shall keep an electronic database of photographic records which will include:

1. Pictures of all areas designated as work areas, camp areas, development sites and storage areas taken before these areas are set up;
2. All bunding and fencing;
3. Road conditions and road verges;
4. Condition of all farm fences;
5. Topsoil storage areas;
6. All areas to be cordoned off during construction;
7. Waste management sites;
8. Ablution facilities (inside and out);
9. Any non-conformances deemed to be "significant";
10. All completed corrective actions for non-compliances;
11. All required signage;
12. Photographic recordings of incidents;
13. All areas before, during and post rehabilitation; and

14. Include relevant photographs in the Final Environmental Audit Report.

4.10 Complaints register

The ECOs shall keep a current and up-to-date complaints register. The complaints register is to be a record of all complaints received from communities, stakeholders and individuals. The Complaints Record shall:

1. Record the name and contact details of the complainant;
2. Record the time and date of the complaint;
3. Contain a detailed description of the complaint;
4. Where relevant and appropriate, contain photographic evidence of the complaint or damage (ECOs to take relevant photographs); and
5. Contain a copy of the ECOs written response to each complaint received and keep a record of any further correspondence with the complainant. The ECO's written response will include a description of any corrective action to be taken and must be signed by the Contractor, ECO and affected party. Where a damage claim is issued by the complainant, the ECOs shall respond as described in **(section 4.11)** below.

4.11 Claims for damages

In the event that a Claim for Damages is submitted by a community, landowner or individual, the ECOs shall:

1. Record the full detail of the complaint as described in **(section 4.10)** above;
2. The DPM will evaluate the claim and associated damage and submit the evaluation to the Senior Site Representative for approval;
3. Following consideration by the DPM, the claim is to be resolved and settled immediately, or the reason for not accepting the claim communicated in writing to the claimant. Should the claimant not accept this, the ECO shall, in writing report the incident to the Developer's negotiator and legal department; and
4. A formal record of the response by the ECOs to the claimant as well as the rectification of the method of making payments not amount will be recorded in the EMPr file.

4.12 Interactions with affected parties

Open, transparent and good relations with affected landowners, communities and regional staff are an essential aspect to the successful management and mitigation of environmental impacts.

The ECOs shall:

1. Ensure that all queries, complaints and claims are dealt within an agreed timeframe;
2. Ensure that any or all agreements are documented, signed by all parties and a record of the agreement kept in the EMPr file;
3. Ensure that a complaints telephone numbers are made available to all landowners and affected parties; and

4. Ensure that contact with affected parties is courteous at all times;

4.13 Environmental audits

Internal environmental audits of the activity and implementation of the EMPr must be undertaken. The findings and outcomes included in the EMPr file and submitted to the CA at intervals as indicated in the EA.

The ECOs must prepare a monthly EAR. The report will be tabled as the key point on the agenda of the Environmental Site Meeting. The Report is submitted for acceptance at the meeting and the final report will be circulated to the Project Manager and filed in the EMPr file. At a frequency determined by the EA, the ECOs shall submit the monthly reports to the CA. At a minimum the monthly report is to cover the following:

- Weekly Environmental Checklists;
- Deviations and non-compliances with the checklists;
- Non-compliances issued;
- Completed and reported corrective actions;
- Environmental Monitoring;
- General environmental findings and actions; and
- Minutes of the Bi-monthly Environmental Site Meetings.

4.14 Final environmental audits

On final completion of the rehabilitation and/or requirements of the EA a final EAR is to be prepared and submitted to the CA. The EAR must comply with Appendix 7 of the EIA Regulations.

PART B: SECTION 1: Pre-approved generic EMPr template

5. IMPACT MANAGEMENT OUTCOMES AND IMPACT MANAGEMENT ACTIONS

This section provides a pre-approved generic EMPr template with aspects that are common to the development of substation infrastructure for the transmission and distribution of electricity. There is a list of aspects identified for the development or expansion of substation infrastructure for the transmission and distribution of electricity, and for each aspect a set of prescribed impact management outcomes and associated impact management actions have been identified. Holders of EAs are responsible to ensure the implementation of these outcomes and actions for all projects as a minimum requirement, in order to mitigate the impact of such aspects identified for the development or expansion of substation infrastructure for the transmission and distribution of electricity.

The template provided below is to be completed by providing the information under each heading for each environmental impact management action.

The completed template must be signed and dated on each page by both the contractor and the holder of the EA prior to commencement of the activity. The method statements prepared and agreed to by the holder of the EA must be appended to the template as Appendix 1. Each method statement must also be duly signed and dated on each page by the contractor and the holder of the EA. This template, once signed and dated, is legally binding. The holder of the EA will remain responsible for its implementation.

5.1 Environmental awareness training

Impact management outcome: All onsite staff are aware and understands the individual responsibilities in terms of this EMPr.

Impact Management Actions	Implementation			Monitoring		
	Responsible person	Method of implementation	Timeframe for implementation	Responsible person	Frequency	Evidence of compliance
<ul style="list-style-type: none"> - All staff must receive environmental awareness training prior to commencement of the activities; - The Contractor must allow for sufficient sessions to train all personnel with no more than 20 personnel attending each course; - Refresher environmental awareness training is available as and when required; - All staff are aware of the conditions and controls linked to the EA and within the EMPr and made aware of their individual roles and responsibilities in achieving compliance with the EA and EMPr; - The Contractor must erect and maintain information posters at key locations on site, and the posters must include the following information as a minimum: <ul style="list-style-type: none"> a) Safety notifications; and b) No littering. - Environmental awareness training must include as a minimum the following: <ul style="list-style-type: none"> a) Description of significant environmental impacts, actual or potential, related to their work activities; b) Mitigation measures to be implemented when carrying out specific activities; 	Contractor	As defined in EMPr and method statements submitted	Throughout construction period	ECO	Monthly	ECO reporting

<p>c) Emergency preparedness and response procedures;</p> <p>d) Emergency procedures;</p> <p>e) Procedures to be followed when working near or within sensitive areas;</p> <p>f) Wastewater management procedures;</p> <p>g) Water usage and conservation;</p> <p>h) Solid waste management procedures;</p> <p>i) Sanitation procedures;</p> <p>j) Fire prevention; and</p> <p>k) Disease prevention.</p> <p>– A record of all environmental awareness training courses undertaken as part of the EMPr must be available;</p> <p>– Educate workers on the dangers of open and/or unattended fires;</p> <p>– A staff attendance register of all staff to have received environmental awareness training must be available.</p> <p>– Course material must be available and presented in appropriate languages that all staff can understand.</p>						
--	--	--	--	--	--	--

5.2 Site Establishment development

Impact management outcome: Impacts on the environment are minimised during site establishment and the development footprint are kept to demarcated

development area.

Impact Management Actions	Implementation			Monitoring		
	Responsible person	Method of implementation	Timeframe for implementation	Responsible person	Frequency	Evidence of compliance
<ul style="list-style-type: none"> - A method statement must be provided by the contractor prior to any onsite activity that includes the layout of the construction camp in the form of a plan showing the location of key infrastructure and services (where applicable), including but not limited to offices, overnight vehicle parking areas, stores, the workshop, stockpile and lay down areas, hazardous materials storage areas (including fuels), the batching plant (if one is located at the construction camp), designated access routes, equipment cleaning areas and the placement of staff accommodation, cooking and ablution facilities, waste and wastewater management; - Location of camps must be within approved area to ensure that the site does not impact on sensitive areas identified in the environmental assessment or site walk through; - Sites must be located where possible on previously disturbed areas; - The camp must be fenced in accordance with Section 5.5: Fencing and gate installation; and - The use of existing accommodation for contractor staff, where possible, is encouraged. 	Contractor	As defined in EMPr and method statements submitted	Throughout construction period	ECO	Monthly	ECO reporting

5.3 Access restricted areas

Impact management outcome: Access to restricted areas prevented.

Impact Management Actions	Implementation			Monitoring		
	Responsible person	Method of implementation	Timeframe for implementation	Responsible person	Frequency	Evidence of compliance
<ul style="list-style-type: none"> – Identification of access restricted areas is to be informed by the environmental assessment, site walk through and any additional areas identified during development; – Erect, demarcate and maintain a temporary barrier with clear signage around the perimeter of any access restricted area, colour coding could be used if appropriate; and – Unauthorised access and development related activity inside access restricted areas is prohibited. 	Contractor	As defined in EMPr method statements submitted	Throughout construction period	ECO	Monthly	ECO reporting

5.4 Access roads

Impact management outcome: Minimise impact to the environment through the planned and restricted movement of vehicles on site.

Impact Management Actions	Implementation			Monitoring		
	Responsible person	Method of implementation	Timeframe for implementation	Responsible person	Frequency	Evidence of compliance
<ul style="list-style-type: none"> – An access agreement must be formalised and signed by the DPM, Contractor and landowner before commencing with the activities; – All private roads used for access to the servitude must be maintained and upon completion of the works, be left in at least the original condition – All contractors must be made aware of all these access routes. 	Contractor	As defined in EMPr method statements submitted	Throughout construction period	ECO	Monthly	ECO reporting

<ul style="list-style-type: none"> - Any access route deviation from that in the written agreement must be closed and re-vegetated immediately, at the contractor's expense; - Maximum use of both existing servitudes and existing roads must be made to minimize further disturbance through the development of new roads; - In circumstances where private roads must be used, the condition of the said roads must be recorded in accordance with section 4.9: photographic record; prior to use and the condition thereof agreed by the landowner, the DPM, and the contractor; - Access roads in flattish areas must follow fence lines and tree belts to avoid fragmentation of vegetated areas or croplands - Access roads must only be developed on a pre-planned and approved roads. 						
--	--	--	--	--	--	--

5.5 Fencing and Gate installation

<p>Impact management outcome: Minimise impact to the environment and ensure safe and controlled access to the site through the erection of fencing and gates where required.</p>		
<p>Impact Management Actions</p>	<p>Implementation</p>	<p>Monitoring</p>

	Responsible person	Method of implementation	Timeframe for implementation	Responsible person	Frequency	Evidence of compliance
<ul style="list-style-type: none"> - Use existing gates provided to gain access to all parts of the area authorised for development, where possible; - Existing and new gates to be recorded and documented in accordance with section 4.9: photographic record; - All gates must be fitted with locks and be kept locked at all times during the development phase, unless otherwise agreed with the landowner; - At points where the line crosses a fence in which there is no suitable gate within the extent of the line servitude, on the instruction of the DPM, a gate must be installed at the approval of the landowner; - Care must be taken that the gates must be so erected that there is a gap of no more than 100 mm between the bottom of the gate and the ground; - Where gates are installed in jackal proof fencing, a suitable reinforced concrete sill must be provided beneath the gate; - Original tension must be maintained in the fence wires; - All gates installed in electrified fencing must be re-electrified; - All demarcation fencing and barriers must be maintained in good working order for the duration of the development activities; - Fencing must be erected around the camp, batching plants, hazardous storage areas, and all designated access restricted areas, where applicable; - Any temporary fencing to restrict the movement of life-stock must only be erected with the permission of the land owner. - All fencing must be developed of high quality material bearing the SABS mark; 	Contractor	As defined in EMPr method statements submitted	Throughout construction period	ECO	Monthly	ECO reporting

<ul style="list-style-type: none"> - The use of razor wire as fencing must be avoided; - Fenced areas with gate access must remain locked after hours, during weekends and on holidays if staff is away from site. Site security will be required at all times; - On completion of the development phase all temporary fences are to be removed; - The contractor must ensure that all fence uprights are appropriately removed, ensuring that no uprights are cut at ground level but rather removed completely. 						
---	--	--	--	--	--	--

5.6 Water Supply Management

Impact management outcome: Undertake responsible water usage.

Impact Management Actions	Implementation			Monitoring		
	Responsible person	Method of implementation	Timeframe for implementation	Responsible person	Frequency	Evidence of compliance
<ul style="list-style-type: none"> - All abstraction points or bore holes must be registered with the DWS and suitable water meters installed to ensure that the abstracted volumes are measured on a daily basis; - The Contractor must ensure the following: <ul style="list-style-type: none"> a. The vehicle abstracting water from a river does not enter or cross it and does not operate from within the river; b. No damage occurs to the river bed or banks and that the abstraction of water does not entail stream diversion activities; and c. All reasonable measures to limit pollution or sedimentation of the downstream watercourse are 	Contractor	As defined in EMPr method statements submitted	Throughout construction period	ECO	Monthly	ECO reporting

<p>implemented.</p> <ul style="list-style-type: none"> - Ensure water conservation is being practiced by: <ul style="list-style-type: none"> a. Minimising water use during cleaning of equipment; b. Undertaking regular audits of water systems; and c. Including a discussion on water usage and conservation during environmental awareness training. d. The use of grey water is encouraged. 						
---	--	--	--	--	--	--

5.7 Storm and waste water management

Impact management outcome: Impacts to the environment caused by storm water and wastewater discharges during construction are avoided.

Impact Management Actions	Implementation			Monitoring		
	Responsible person	Method of implementation	Timeframe for implementation	Responsible person	Frequency	Evidence of compliance
<ul style="list-style-type: none"> - Runoff from the cement/ concrete batching areas must be strictly controlled, and contaminated water must be collected, stored and either treated or disposed of off-site, at a location approved by the project manager; - All spillage of oil onto concrete surfaces must be controlled by the use of an approved absorbent material and the used absorbent material disposed of at an appropriate waste disposal facility; - Natural storm water runoff not contaminated during the development and clean water can be discharged directly to watercourses and water bodies, subject to the Project Manager's approval and support by the ECO; - Water that has been contaminated with suspended solids, 	Contractor	As defined in EMPr and method statements submitted	Throughout construction period	ECO	Monthly	ECO reporting

such as soils and silt, may be released into watercourses or water bodies only once all suspended solids have been removed from the water by settling out these solids in settlement ponds. The release of settled water back into the environment must be subject to the Project Manager's approval and support by the ECO.						
--	--	--	--	--	--	--

5.8 Solid and hazardous waste management

Impact management outcome: Wastes are appropriately stored, handled and safely disposed of at a recognised waste facility.

Impact Management Actions	Implementation			Monitoring		
	Responsible person	Method of implementation	Timeframe for implementation	Responsible person	Frequency	Evidence of compliance
<ul style="list-style-type: none"> - All measures regarding waste management must be undertaken using an integrated waste management approach; - Sufficient, covered waste collection bins (scavenger and weatherproof) must be provided; - A suitably positioned and clearly demarcated waste collection site must be identified and provided; - The waste collection site must be maintained in a clean and orderly manner; - Waste must be segregated into separate bins and clearly marked for each waste type for recycling and safe disposal; - Staff must be trained in waste segregation; - Bins must be emptied regularly; 	Contractor	As defined in EMPr method statements submitted	Throughout construction period	ECO	Monthly	ECO reporting

<ul style="list-style-type: none"> - General waste produced onsite must be disposed of at registered waste disposal sites/ recycling company; - Hazardous waste must be disposed of at a registered waste disposal site; - Certificates of safe disposal for general, hazardous and recycled waste must be maintained. 						
---	--	--	--	--	--	--

5.9 Protection of watercourses and estuaries

Impact management outcome: Pollution and contamination of the watercourse environment and or estuary erosion are prevented.

Impact Management Actions	Implementation			Monitoring		
	Responsible person	Method of implementation	Timeframe for implementation	Responsible person	Frequency	Evidence of compliance
<ul style="list-style-type: none"> - All watercourses must be protected from direct or indirect spills of pollutants such as solid waste, sewage, cement, oils, fuels, chemicals, aggregate tailings, wash and contaminated water or organic material resulting from the Contractor's activities; - In the event of a spill, prompt action must be taken to clear the polluted or affected areas; - Where possible, no development equipment must traverse any seasonal or permanent wetland - No return flow into the estuaries must be allowed and no disturbance of the Estuarine functional Zone should occur; - Development of permanent watercourse or estuary crossing must only be undertaken where no alternative access to tower position is available; 	Contractor	As defined in EMPr method statements submitted	Throughout construction period	ECO	Monthly	ECO reporting

<ul style="list-style-type: none"> - There must not be any impact on the long term morphological dynamics of watercourses or estuaries; - Existing crossing points must be favored over the creation of new crossings (including temporary access) - When working in or near any watercourse or estuary, the following environmental controls and consideration must be taken: <ul style="list-style-type: none"> a) Water levels during the period of construction; No altering of the bed, banks, course or characteristics of a watercourse b) During the execution of the works, appropriate measures to prevent pollution and contamination of the riparian environment must be implemented e.g. including ensuring that construction equipment is well maintained; c) Where earthwork is being undertaken in close proximity to any watercourse, slopes must be stabilised using suitable materials, i.e. sandbags or geotextile fabric, to prevent sand and rock from entering the channel; and d) Appropriate rehabilitation and re-vegetation measures for the watercourse banks must be implemented timeously. In this regard, the banks should be appropriately and incrementally stabilised as soon as development allows. 						
--	--	--	--	--	--	--

5.10 Vegetation clearing

<p>Impact management outcome: Vegetation clearing is restricted to the authorised development footprint of the proposed infrastructure.</p>		
<p>Impact Management Actions</p>	<p>Implementation</p>	<p>Monitoring</p>

	Responsible person	Method of implementation	Timeframe for implementation	Responsible person	Frequency	Evidence of compliance
<p>General:</p> <ul style="list-style-type: none"> - Indigenous vegetation which does not interfere with the development must be left undisturbed; - Protected or endangered species may occur on or near the development site. Special care should be taken not to damage such species; - Search, rescue and replanting of all protected and endangered species likely to be damaged during project development must be identified by the relevant specialist and completed prior to any development or clearing; - Permits for removal must be obtained from the relevant CA prior to the cutting or clearing of the affected species, and they must be filed; - The Environmental Audit Report must confirm that all identified species have been rescued and replanted and that the location of replanting is compliant with conditions of approvals; - Trees felled due to construction must be documented and form part of the Environmental Audit Report; - Rivers and watercourses must be kept clear of felled trees, vegetation cuttings and debris; - Only a registered pest control operator may apply herbicides on a commercial basis and commercial application must be carried out under the supervision of a registered pest control operator, supervision of a registered pest control operator or is appropriately trained; - A daily register must be kept of all relevant details of 	Contractor	As defined in EMPr method statements submitted	Throughout construction period	ECO	Monthly	ECO reporting

herbicide usage; – No herbicides must be used in estuaries; – All protected species and sensitive vegetation not removed must be clearly marked and such areas fenced off in accordance to Section 5.3: Access restricted areas . Alien invasive vegetation must be removed and disposed of at a licensed waste management facility.						
--	--	--	--	--	--	--

5.11 Protection of fauna

Impact management outcome: Disturbance to fauna is minimised.

Impact Management Actions	Implementation			Monitoring		
	Responsible person	Method of implementation	Timeframe for implementation	Responsible person	Frequency	Evidence of compliance
<ul style="list-style-type: none"> – No interference with livestock must occur without the landowner’s written consent and with the landowner or a person representing the landowner being present; – The breeding sites of raptors and other wild birds species must be taken into consideration during the planning of the development programme; – Breeding sites must be kept intact and disturbance to breeding birds must be avoided. Special care must be taken where nestlings or fledglings are present; – Special recommendations of the avian specialist must be adhered to at all times to prevent unnecessary disturbance of birds; – No poaching must be tolerated under any circumstances. 	Contractor	As defined in EMPr and method statements submitted	Throughout construction period	ECO	Monthly	ECO reporting

<p>All animal dens in close proximity to the works areas must be marked as Access restricted areas;</p> <ul style="list-style-type: none"> - No deliberate or intentional killing of fauna is allowed; - In areas where snakes are abundant, snake deterrents to be deployed on the pylons to prevent snakes climbing up, being electrocuted and causing power outages; and - No Threatened or Protected species (ToPs) and/or protected fauna as listed according NEMBA (Act No. 10 of 2004) and relevant provincial ordinances may be removed and/or relocated without appropriate authorisations/permits. 						
---	--	--	--	--	--	--

5.12 Protection of heritage resources

Impact management outcome: Impact to heritage resources is minimised.

Impact Management Actions	Implementation			Monitoring		
	Responsible person	Method of implementation	Timeframe for implementation	Responsible person	Frequency	Evidence of compliance
<ul style="list-style-type: none"> - Identify, demarcate and prevent impact to all known sensitive heritage features on site in accordance with the No-Go procedure in Section 5.3: Access restricted areas; - Carry out general monitoring of excavations for potential fossils, artefacts and material of heritage importance; - All work must cease immediately, if any human remains and/or other archaeological, palaeontological and historical material are uncovered. Such material, if exposed, must be reported to the nearest museum, archaeologist/palaeontologist (or the South African Police Services), so that 	Contractor	As defined in EMPr and method statements submitted	Throughout construction period	ECO	Monthly	ECO reporting

a systematic and professional investigation can be undertaken. Sufficient time must be allowed to remove/collect such material before development recommences.						
--	--	--	--	--	--	--

5.13 Safety of the public

Impact management outcome: All precautions are taken to minimise the risk of injury, harm or complaints.

Impact Management Actions	Implementation			Monitoring		
	Responsible person	Method of implementation	Timeframe for implementation	Responsible person	Frequency	Evidence of compliance
<ul style="list-style-type: none"> - Identify fire hazards, demarcate and restrict public access to these areas as well as notify the local authority of any potential threats e.g. large brush stockpiles, fuels etc.; - All unattended open excavations must be adequately fenced or demarcated; - Adequate protective measures must be implemented to prevent unauthorised access to and climbing of partly constructed towers and protective scaffolding; - Ensure structures vulnerable to high winds are secured; - Maintain an incidents and complaints register in which all incidents or complaints involving the public are logged. 	Contractor	As defined in EMPr method statements submitted	Throughout construction period	ECO	Monthly	ECO reporting

5.14 Sanitation

Impact management outcome: Clean and well maintained toilet facilities are available to all staff in an effort to minimise the risk of disease and impact to the environment.

Impact Management Actions	Implementation			Monitoring		
	Responsible person	Method of implementation	Timeframe for implementation	Responsible person	Frequency	Evidence of compliance
<ul style="list-style-type: none"> - Mobile chemical toilets are installed onsite if no other ablution facilities are available; - The use of ablution facilities and or mobile toilets must be used at all times and no indiscriminate use of the veld for the purposes of ablutions must be permitted under any circumstances; - Where mobile chemical toilets are required, the following must be ensured: <ul style="list-style-type: none"> a) Toilets are located no closer than 100 m to any watercourse or water body; b) Toilets are secured to the ground to prevent them from toppling due to wind or any other cause; c) No spillage occurs when the toilets are cleaned or emptied and the contents are managed in accordance with the EMPr; d) Toilets have an external closing mechanism and are closed and secured from the outside when not in use to prevent toilet paper from being blown out; e) Toilets are emptied before long weekends and workers holidays, and must be locked after working hours; f) Toilets are serviced regularly and the ECO must inspect toilets to ensure compliance to health standards; - A copy of the waste disposal certificates must be maintained. 	Contractor	As defined in EMPr method statements submitted	Throughout construction period	ECO	Monthly	ECO reporting

5.15 Prevention of disease

Impact Management outcome: All necessary precautions linked to the spread of disease are taken.

Impact Management Actions	Implementation			Monitoring		
	Responsible person	Method of implementation	Timeframe for implementation	Responsible person	Frequency	Evidence of compliance
<ul style="list-style-type: none"> - Undertake environmentally-friendly pest control in the camp area; - Ensure that the workforce is sensitised to the effects of sexually transmitted diseases, especially HIV AIDS; - The Contractor must ensure that information posters on AIDS are displayed in the Contractor Camp area; - Information and education relating to sexually transmitted diseases to be made available to both construction workers and local community, where applicable; - Free condoms must be made available to all staff on site at central points; - Medical support must be made available; - Provide access to Voluntary HIV Testing and Counselling Services. 	Contractor	As defined in EMPr and method statements submitted	Throughout construction period	ECO	Monthly	ECO reporting

5.16 Emergency procedures

Impact management outcome: Emergency procedures are in place to enable a rapid and effective response to all types of environmental emergencies.

Impact Management Actions	Implementation			Monitoring		
	Responsible person	Method of implementation	Timeframe for implementation	Responsible person	Frequency	Evidence of compliance
<ul style="list-style-type: none"> – Compile an Emergency Response Action Plan (ERAP) prior to the commencement of the proposed project; – The Emergency Plan must deal with accidents, potential spillages and fires in line with relevant legislation; – All staff must be made aware of emergency procedures as part of environmental awareness training; – The relevant local authority must be made aware of a fire as soon as it starts; – In the event of emergency necessary mitigation measures to contain the spill or leak must be implemented (see Hazardous Substances section 5.17). 	Contractor	As defined in EMPr and method statements submitted	Throughout construction period	ECO	Monthly	ECO reporting

5.17 Hazardous substances

Impact management outcome: Safe storage, handling, use and disposal of hazardous substances.						
Impact Management Actions	Implementation			Monitoring		
	Responsible person	Method of implementation	Timeframe for implementation	Responsible person	Frequency	Evidence of compliance
<ul style="list-style-type: none"> – The use and storage of hazardous substances to be minimised and non-hazardous and non-toxic alternatives 	Contractor	As defined in EMPr and	Throughout construction	ECO	Monthly	ECO reporting

<p>substituted where possible;</p> <ul style="list-style-type: none"> - All hazardous substances must be stored in suitable containers as defined in the Method Statement; - Containers must be clearly marked to indicate contents, quantities and safety requirements; - All storage areas must be bunded. The bunded area must be of sufficient capacity to contain a spill / leak from the stored containers; - Bunded areas to be suitably lined with a SABS approved liner; - An Alphabetical Hazardous Chemical Substance (HCS) control sheet must be drawn up and kept up to date on a continuous basis; - All hazardous chemicals that will be used on site must have Material Safety Data Sheets (MSDS); - All employees working with HCS must be trained in the safe use of the substance and according to the safety data sheet; - Employees handling hazardous substances / materials must be aware of the potential impacts and follow appropriate safety measures. Appropriate personal protective equipment must be made available; - The Contractor must ensure that diesel and other liquid fuel, oil and hydraulic fluid is stored in appropriate storage tanks or in bowsers; - The tanks/ bowsers must be situated on a smooth impermeable surface (concrete) with a permanent bund. The impermeable lining must extend to the crest of the bund and the volume inside the bund must be 130% of the total capacity of all the storage tanks/ bowsers (110% statutory requirement plus an allowance for rainfall); 		<p>method statements submitted</p>	<p>period</p>			
--	--	---	----------------------	--	--	--

<ul style="list-style-type: none"> - The floor of the bund must be sloped, draining to an oil separator; - Provision must be made for refueling at the storage area by protecting the soil with an impermeable groundcover. Where dispensing equipment is used, a drip tray must be used to ensure small spills are contained; - All empty externally dirty drums must be stored on a drip tray or within a bund area; - No unauthorised access into the hazardous substances storage areas must be permitted; - No smoking must be allowed within the vicinity of the hazardous storage areas; - Adequate fire-fighting equipment must be made available at all hazardous storage areas; - Where refueling away from the dedicated refueling station is required, a mobile refueling unit must be used. Appropriate ground protection such as drip trays must be used; - An appropriately sized spill kit kept onsite relevant to the scale of the activity/s involving the use of hazardous substance must be available at all times; - The responsible operator must have the required training to make use of the spill kit in emergency situations; - An appropriate number of spill kits must be available and must be located in all areas where activities are being undertaken; - In the event of a spill, contaminated soil must be collected in containers and stored in a central location and disposed of according to the National Environmental Management: Waste Act 59 of 2008. Refer to Section 5.7 for procedures concerning storm and waste water management and 5.8 for solid and hazardous waste management. 						
---	--	--	--	--	--	--

5.18 Workshop, equipment maintenance and storage

Impact management outcome: Soil, surface water and groundwater contamination is minimised.

Impact Management Actions	Implementation			Monitoring		
	Responsible person	Method of implementation	Timeframe for implementation	Responsible person	Frequency	Evidence of compliance
<ul style="list-style-type: none"> - Where possible and practical all maintenance of vehicles and equipment must take place in the workshop area; - During servicing of vehicles or equipment, especially where emergency repairs are effected outside the workshop area, a suitable drip tray must be used to prevent spills onto the soil. The relevant local authority must be made aware of a fire as soon as it starts; - Leaking equipment must be repaired immediately or be removed from site to facilitate repair; - Workshop areas must be monitored for oil and fuel spills; - Appropriately sized spill kit kept onsite relevant to the scale of the activity taking place must be available; - The workshop area must have a bunded concrete slab that is sloped to facilitate runoff into a collection sump or suitable oil / water separator where maintenance work on vehicles and equipment can be performed; - Water drainage from the workshop must be contained and managed in accordance Section 5.7: Storm and waste water management. 	Contractor	As defined in EMPr and method statements submitted	Throughout construction period	ECO	Monthly	ECO reporting

5.19 Batching plants

Impact management outcome: Minimise spillages and contamination of soil, surface water and groundwater.

Impact Management Actions	Implementation			Monitoring		
	Responsible person	Method of implementation	Timeframe for implementation	Responsible person	Frequency	Evidence of compliance
<ul style="list-style-type: none"> - Concrete mixing must be carried out on an impermeable surface; - Batching plants areas must be fitted with a containment facility for the collection of cement laden water. - Dirty water from the batching plant must be contained to prevent soil and groundwater contamination - Bagged cement must be stored in an appropriate facility and at least 10 m away from any water courses, gullies and drains; - A washout facility must be provided for washing of concrete associated equipment. Water used for washing must be restricted; - Hardened concrete from the washout facility or concrete mixer can either be reused or disposed of at an appropriate licenced disposal facility; - Empty cement bags must be secured with adequate binding material if these will be temporarily stored on site; - Sand and aggregates containing cement must be kept damp to prevent the generation of dust (Refer to Section 5.20: Dust emissions) - Any excess sand, stone and cement must be removed or 	Contractor	As defined in EMPr and method statements submitted	Throughout construction period	ECO	Monthly	ECO reporting

<p>reused from site on completion of construction period and disposed at a registered disposal facility;</p> <ul style="list-style-type: none"> Temporary fencing must be erected around batching plants in accordance with Section 5.5: Fencing and gate installation. 						
---	--	--	--	--	--	--

5.20 Dust emissions

Impact management outcome: Dust prevention measures are applied to minimise the generation of dust.						
Impact Management Actions	Implementation			Monitoring		
	Responsible person	Method of implementation	Timeframe for implementation	Responsible person	Frequency	Evidence of compliance
<ul style="list-style-type: none"> Take all reasonable measures to minimise the generation of dust as a result of project development activities to the satisfaction of the ECO; Removal of vegetation must be avoided until such time as soil stripping is required and similarly exposed surfaces must be re-vegetated or stabilised as soon as is practically possible; Excavation, handling and transport of erodible materials must be avoided under high wind conditions or when a visible dust plume is present; During high wind conditions, the ECO must evaluate the situation and make recommendations as to whether dust-damping measures are adequate, or whether working will cease altogether until the wind speed drops to an acceptable level; Where possible, soil stockpiles must be located in sheltered 	Contractor	As defined in EMPr method statements submitted	Throughout construction period	ECO	Monthly	ECO reporting

<p>areas where they are not exposed to the erosive effects of the wind;</p> <ul style="list-style-type: none"> - Where erosion of stockpiles becomes a problem, erosion control measures must be implemented at the discretion of the ECO; - Vehicle speeds must not exceed 40 km/h along dust roads or 20 km/h when traversing unconsolidated and non-vegetated areas; - Straw stabilisation must be applied at a rate of one bale/10 m² and harrowed into the top 100 mm of top material, for all completed earthworks; - For significant areas of excavation or exposed ground, dust suppression measures must be used to minimise the spread of dust. 						
--	--	--	--	--	--	--

5.21 Blasting

<p>Impact management outcome: Impact to the environment is minimised through a safe blasting practice.</p>						
<p>Impact Management Actions</p>	<p>Implementation</p>			<p>Monitoring</p>		
	<p>Responsible person</p>	<p>Method of implementation</p>	<p>Timeframe for implementation</p>	<p>Responsible person</p>	<p>Frequency</p>	<p>Evidence of compliance</p>
<ul style="list-style-type: none"> - Any blasting activity must be conducted by a suitably licensed blasting contractor; and - Notification of surrounding landowners, emergency services site personnel of blasting activity 24 hours prior to such activity taking place on Site. 	<p>Contractor</p>	<p>As defined in EMPr method statements submitted</p>	<p>Throughout construction period</p>	<p>ECO</p>	<p>Monthly</p>	<p>ECO reporting</p>

5.22 Noise

Impact Management outcome: Prevent unnecessary noise to the environment by ensuring that noise from development activity is mitigated.

Impact Management Actions	Implementation			Monitoring		
	Responsible person	Method of implementation	Timeframe for implementation	Responsible person	Frequency	Evidence of compliance
<ul style="list-style-type: none"> - The Contractor must keep noise level within acceptable limits, Restrict the use of sound amplification equipment for communication and emergency only; - All vehicles and machinery must be fitted with appropriate silencing technology and must be properly maintained; - Any complaints received by the Contractor regarding noise must be recorded and communicated. Where possible or applicable, provide transport to and from the site on a daily basis for construction workers; - Develop a Code of Conduct for the construction phase in terms of behaviour of construction staff. Operating hours as determined by the environmental authorisation are adhered to during the development phase. Where not defined, it must be ensured that development activities must still meet the impact management outcome related to noise management. 	Contractor	As defined in EMPr and method statements submitted	Throughout construction period	ECO	Monthly	ECO reporting

5.23 Fire prevention

Impact management outcome: Prevention of uncontrollable fires.

Impact Management Actions	Implementation			Monitoring		
	Responsible person	Method of implementation	Timeframe for implementation	Responsible person	Frequency	Evidence of compliance
<ul style="list-style-type: none"> - Designate smoking areas where the fire hazard could be regarded as insignificant; - Firefighting equipment must be available on all vehicles located on site; - The local Fire Protection Agency (FPA) must be informed of construction activities; - Contact numbers for the FPA and emergency services must be communicated in environmental awareness training and displayed at a central location on site; - Two way swop of contact details between ECO and FPA. 	Contractor	As defined in EMPr method statements submitted	Throughout construction period	ECO	Monthly	ECO reporting

5.24 Stockpiling and stockpile areas

Impact management outcome: Reduce erosion and sedimentation as a result of stockpiling.

Impact Management Actions	Implementation			Monitoring		
	Responsible person	Method of implementation	Timeframe for implementation	Responsible person	Frequency	Evidence of compliance
<ul style="list-style-type: none"> - All material that is excavated during the project development phase (either during piling (if required) or earthworks) must be stored appropriately on site in order to minimise impacts to watercourses, watercourses and water bodies; - All stockpiled material must be maintained and kept clear of weeds and alien vegetation growth by undertaking regular weeding and control methods; - Topsoil stockpiles must not exceed 2 m in height; - During periods of strong winds and heavy rain, the stockpiles must be covered with appropriate material (e.g. cloth, tarpaulin etc.); - Where possible, sandbags (or similar) must be placed at the bases of the stockpiled material in order to prevent erosion of the material. 	Contractor	As defined in EMPr method statements submitted	Throughout construction period	ECO	Monthly	ECO reporting

5.25 Civil works

Impact management outcome: Impact to the environment minimised during civil works to create the substation terrace.

Impact Management Actions	Implementation			Monitoring		
	Responsible	Method of	Timeframe for	Responsible	Frequency	Evidence of

	person	implementation	implementation	person		compliance
<ul style="list-style-type: none"> - Where terracing is required, topsoil must be collected and retained for the purpose of re-use later to rehabilitate disturbed areas not covered by yard stone; - Areas to be rehabilitated include terrace embankments and areas outside the high voltage yards; - Where required, all sloped areas must be stabilised to ensure proper rehabilitation is effected and erosion is controlled; - These areas can be stabilised using design structures or vegetation as specified in the design to prevent erosion of embankments. The contract design specifications must be adhered to and implemented strictly; - Rehabilitation of the disturbed areas must be managed in accordance with Section 5.35: Landscaping and rehabilitation; - All excess spoil generated during terracing activities must be disposed of in an appropriate manner and at a recognised landfill site; and - Spoil can however be used for landscaping purposes and must be covered with a layer of 150 mm topsoil for rehabilitation purposes. 	Contractor	As defined in EMPr and method statements submitted	Throughout construction period	ECO	Monthly	ECO reporting

5.26 Excavation of foundation, cable trenching and drainage systems



Impact management outcome: No environmental degradation occurs as a result of excavation of foundation, cable trenching and drainage systems.						
Impact Management Actions	Implementation			Monitoring		
	Responsible person	Method of implementation	Timeframe for implementation	Responsible person	Frequency	Evidence of compliance
<ul style="list-style-type: none"> - All excess spoil generated during foundation excavation must be disposed of in an appropriate manner and at a licensed landfill site, if not used for backfilling purposes; - Spoil can however be used for landscaping purposes and must be covered with a layer of 150 mm topsoil for rehabilitation purposes; - Management of equipment for excavation purposes must be undertaken in accordance with Section 5.18: Workshop, equipment maintenance and storage; and - Hazardous substances spills from equipment must be managed in accordance with Section 5.17: Hazardous substances. 	Contractor	As defined in EMPr method statements submitted	Throughout construction period	ECO	Monthly	ECO reporting

5.27 Installation of foundations, cable trenching and drainage systems

Impact management outcome: No environmental degradation occurs during the installation of foundation, cable trenching and drainage system.						
Impact Management Actions	Implementation			Monitoring		

	Responsible person	Method of implementation	Timeframe for implementation	Responsible person	Frequency	Evidence of compliance
<ul style="list-style-type: none"> – Batching of cement to be undertaken in accordance with Section 5.19: Batching plants; and – Residual solid waste must be disposed of in accordance with Section 5.8: Solid waste and hazardous management. 	Contractor	As defined in EMPr and method statements submitted	Throughout construction period	ECO	Monthly	ECO reporting

5.28 Installation of equipment (circuit breakers, current Transformers, Isolators, Insulators, surge arresters, voltage transformers, earth switches)

Impact management outcome: No environmental degradation occurs as a result of installation of equipment.						
Impact Management Actions	Implementation			Monitoring		
	Responsible person	Method of implementation	Timeframe for implementation	Responsible person	Frequency	Evidence of compliance
<ul style="list-style-type: none"> – Management of dust must be conducted in accordance with Section 5.20: Dust emissions; – Management of equipment used for installation must be conducted in accordance with Section 5.18: Workshop, equipment maintenance and storage; – Management hazardous substances and any associated spills must be conducted in accordance with Section 5.17: Hazardous substances; and – Residual solid waste must be recycled or disposed of in accordance with Section 5.8: Solid waste and hazardous management. 	Contractor	As defined in EMPr and method statements submitted	Throughout construction period	ECO	Monthly	ECO reporting

5.29 Steelwork Assembly and Erection

Impact management outcome: No environmental degradation occurs as a result of steelwork assembly and erection.

Impact Management Actions	Implementation			Monitoring		
	Responsible person	Method of implementation	Timeframe for implementation	Responsible person	Frequency	Evidence of compliance
<ul style="list-style-type: none"> – During assembly, care must be taken to ensure that no wasted/unused materials are left on site e.g. bolts and nuts – Emergency repairs due to breakages of equipment must be managed in accordance with Section 5. 18: Workshop, equipment maintenance and storage and Section 5.16: Emergency procedures. 	Contractor	As defined in EMPr and method statements submitted	Throughout construction period	ECO	Monthly	ECO reporting

5.30 Cabling and Stringing

Impact management outcome: No environmental degradation occurs as a result of stringing.

Impact Management Actions	Implementation			Monitoring		
	Responsible	Method of	Timeframe for	Responsible	Frequency	Evidence of

	person	implementation	implementation	person		compliance
<ul style="list-style-type: none"> Residual solid waste (off cuts etc.) shall be recycled or disposed of in accordance with Section 6.8: Solid waste and hazardous Management; Management of equipment used for installation shall be conducted in accordance with Section 5.18: Workshop, equipment maintenance and storage; Management hazardous substances and any associated spills shall be conducted in accordance with Section 5.17: Hazardous substances. 	Contractor	As defined in EMPr and method statements submitted	Throughout construction period	ECO	Monthly	ECO reporting

5.31 Testing and Commissioning (all equipment testing, earthing system, system integration)

Impact management outcome: No environmental degradation occurs as a result of Testing and Commissioning.

Impact Management Actions	Implementation			Monitoring		
	Responsible person	Method of implementation	Timeframe for implementation	Responsible person	Frequency	Evidence of compliance
<ul style="list-style-type: none"> Residual solid waste must be recycled or disposed of in accordance with Section 5.8: Solid waste and hazardous management. 	Contractor	As defined in EMPr and method statements submitted	Throughout construction period	ECO	Monthly	ECO reporting

5.32 Socio-economic

Impact management outcome: enhanced socio-economic development.						
Impact Management Actions	Implementation			Monitoring		
	Responsible person	Method of implementation	Timeframe for implementation	Responsible person	Frequency	Evidence of compliance
<ul style="list-style-type: none"> - Develop and implement communication strategies to facilitate public participation; - Develop and implement a collaborative and constructive approach to conflict resolution as part of the external stakeholder engagement process; - Sustain continuous communication and liaison with neighboring owners and residents - Create work and training opportunities for local stakeholders; and - Where feasible, no workers, with the exception of security personnel, must be permitted to stay over-night on the site. This would reduce the risk to local farmers. 	Contractor	As defined in EMPr method statements submitted	Throughout construction period	ECO	Monthly	ECO reporting

5.33 Temporary closure of site

Impact management outcome: Minimise the risk of environmental impact during periods of site closure greater than five days.						
Impact Management Actions	Implementation			Monitoring		
	Responsible person	Method of implementation	Timeframe for implementation	Responsible person	Frequency	Evidence of compliance

	Responsible person	Method of implementation	Timeframe for implementation	Responsible person	Frequency	Evidence of compliance
<ul style="list-style-type: none"> - Bunds must be emptied (where applicable) and need to be undertaken in accordance with the impact management actions included in sections 5.17: Hazardous substances and 5.18: Workshop, equipment maintenance and storage; - Hazardous storage areas must be well ventilated; - Fire extinguishers must be serviced and accessible. Service records to be filed and audited at last service; - Emergency and contact details displayed must be displayed; - Security personnel must be briefed and have the facilities to contact or be contacted by relevant management and emergency personnel; - Night hazards such as reflectors, lighting, traffic signage etc. must have been checked; - Fire hazards identified and the local authority must have been notified of any potential threats e.g. large brush stockpiles, fuels etc.; - Structures vulnerable to high winds must be secured; - Wind and dust mitigation must be implemented; - Cement and materials stores must have been secured; - Toilets must have been emptied and secured; - Refuse bins must have been emptied and secured; - Drip trays must have been emptied and secured. 	Contractor	As defined in EMPr method statements submitted	Throughout construction period	ECO	Monthly	ECO reporting

5.34 Dismantling of old equipment

Impact management outcome: Impact to the environment to be minimised during the dismantling, storage and disposal of old equipment commissioning.

Impact Management Actions	Implementation			Monitoring		
	Responsible person	Method of implementation	Timeframe for implementation	Responsible person	Frequency	Evidence of compliance
<ul style="list-style-type: none"> - All old equipment removed during the project must be stored in such a way as to prevent pollution of the environment; - Oil containing equipment must be stored to prevent leaking or be stored on drip trays; - All scrap steel must be stacked neatly and any disused and broken insulators must be stored in containers; - Once material has been scrapped and the contract has been placed for removal, the disposal Contractor must ensure that any equipment containing pollution causing substances is dismantled and transported in such a way as to prevent spillage and pollution of the environment; - The Contractor must also be equipped to contain and clean up any pollution causing spills; and - Disposal of unusable material must be at a licensed waste disposal site. 	Contractor	As defined in EMPr and method statements submitted	Throughout construction period	ECO	Monthly	ECO reporting

5.35 Landscaping and rehabilitation

Impact management outcome: Areas disturbed during the development phase are returned to a state that approximates the original condition.

Impact Management Actions	Implementation			Monitoring		
	Responsible person	Method of implementation	Timeframe for implementation	Responsible person	Frequency	Evidence of compliance
<ul style="list-style-type: none"> - All areas disturbed by construction activities must be subject to landscaping and rehabilitation; All spoil and waste must be disposed of to a registered waste site; - All slopes must be assessed for contouring, and to contour only when the need is identified in accordance with the Conservation of Agricultural Resources Act, No 43 of 1983 - All slopes must be assessed for terracing, and to terrace only when the need is identified in accordance with the Conservation of Agricultural Resources Act, No 43 of 1983; - Berms that have been created must have a slope of 1:4 and be replanted with indigenous species and grasses that approximates the original condition; - Where new access roads have crossed cultivated farmlands, that lands must be rehabilitated by ripping which must be agreed to by the holder of the EA and the landowners; - Rehabilitation of access roads outside of farmland; - Indigenous species must be used for with species and/grasses to where it compliments or approximates the original condition; - Stockpiled topsoil must be used for rehabilitation (refer to Section 5.24: Stockpiling and stockpiled areas); - Stockpiled topsoil must be evenly spread so as to facilitate seeding and minimise loss of soil due to erosion; - Before placing topsoil, all visible weeds from the placement 	Contractor	As defined in EMPr method statements submitted	Throughout construction period	ECO	Monthly	ECO reporting

<p>area and from the topsoil must be removed;</p> <ul style="list-style-type: none"> - Subsoil must be ripped before topsoil is placed; - The rehabilitation must be timed so that rehabilitation can take place at the optimal time for vegetation establishment; - Where impacted through construction related activity, all sloped areas must be stabilised to ensure proper rehabilitation is effected and erosion is controlled; - Sloped areas stabilised using design structures or vegetation as specified in the design to prevent erosion of embankments. The contract design specifications must be adhered to and implemented strictly; - Spoil can be used for backfilling or landscaping as long as it is covered by a minimum of 150 mm of topsoil. - Where required, re-vegetation including hydro-seeding can be enhanced using a vegetation seed mixture as described below. A mixture of seed can be used provided the mixture is carefully selected to ensure the following: <ul style="list-style-type: none"> a) Annual and perennial plants are chosen; b) Pioneer species are included; c) Species chosen must be indigenous to the area with the seeds used coming from the area; d) Root systems must have a binding effect on the soil; e) The final product must not cause an ecological imbalance in the area 						
--	--	--	--	--	--	--

6 ACCESS TO THE GENERIC EMPr

Once completed and signed, to allow the public access to the generic EMPr, the holder of the EA must make the EMPr available to the public in accordance with the requirements of Regulation 26(h) of the EIA Regulations.

PART B: SECTION 2

7 SITE SPECIFIC INFORMATION AND DECLARATION

7.1 Sub-section 1: contact details and description of the project

7.1.1 Details of the applicant:

Name of applicant: **Hotazel Solar Facility 2 (Pty) Ltd**

Tel No: **+ 27 (21) 418 2596**

Fax No: **+ 27 (0) 86 514 8184**

Postal Address: **1st Floor, West Quay Building,7 West Quay Road, Waterfront,Cape Town, 8000**

Physical Address: **1st Floor, West Quay Building,7 West Quay Road, Waterfront,Cape Town, 8000**

7.1.2 Details and expertise of the EAP:

Name of EAP: **Cape EAPrac – Dale Holder**

Tel No: **044 8740365**

Fax No: **044 874 0432**

E-mail address: **dale@cape-eaprac.co.za**

Expertise of the EAP (Curriculum Vitae included): **Ndip Nat Con 16 years experience in environmental management.**

7.1.3 Project name: **Substation Infrastructure for Hotazel 2.**

7.1.4 Description of the project: **Substation Infrastructure for Hotazel 2.**

7.1.5 Project location:

The Remaining Extent (Portion 0) of the farm York A 279, and associated infrastructure on Portion 11 of Farm York A 279, Remaining Extent of Portion 3 of the Farm York 279 and the Remaining Extent (Portion 0) of the Farm Hotazel 280 situated in the District of Hotazel in the Northern Cape Province.

7.2 Sub-section 2: Development footprint site map

This sub-section must include a map of the site sensitivity overlaid with the preliminary infrastructure layout. The sensitivity map must be prepared from the national web based environmental screening tool, when available for compulsory use at: <https://screening.environment.gov.zg/screeningtool>. The sensitivity map shall identify the nature of each sensitive feature e.g. threatened plant species, archaeological site, etc. Sensitivity maps shall identify features both within the planned working area and any known sensitive features within 50 m from the development footprint.

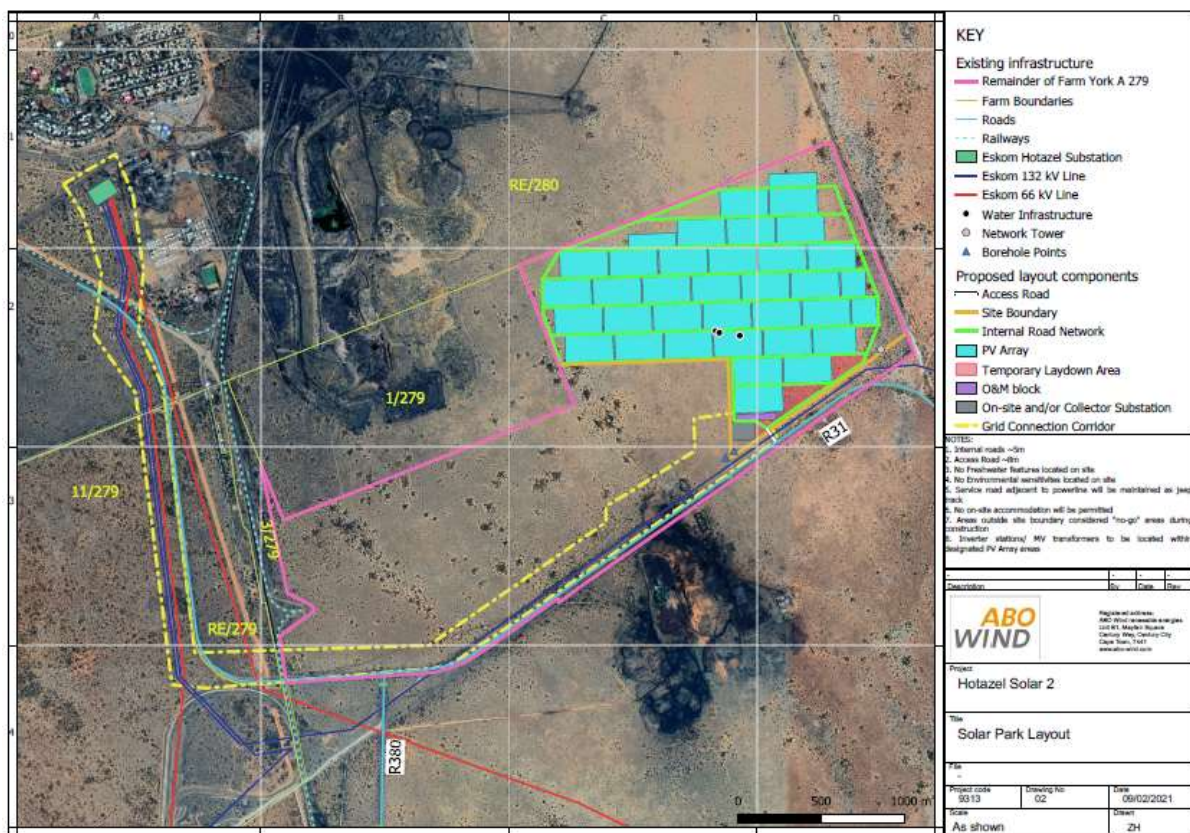


Figure 1: Layout Plan

7.3 Sub-section 3: Declaration

The proponent/applicant or holder of the EA affirms that he/she will abide and comply with the prescribed impact management outcomes and impact management actions as stipulated in part B: section 1 of the generic EMPr and have the understanding that the impact management outcomes and impact management actions are legally binding. The proponent/applicant or holder of the EA affirms that he/she will provide written notice to the

CA 14 day prior to the date on which the activity will commence of commencement of construction to facilitate compliance inspections.



Signature Proponent/applicant/ holder of EA

Date: **26 February 2021**

7.4 Sub-section 4: amendments to site specific information (Part B; section 2)

Should the EA be transferred to a new holder, Part B: Section 2 must be completed by the new holder and submitted with the application for an amendment of the EA in terms of Regulations 29 or 31 of the EIA Regulations, whichever applies. The information submitted for an amendment to an environmental authorisation will be considered to be incomplete should a signed copy of Part B: Section 2 not be submitted. Once approved, Part B: Section 2 forms part of the EMPr for the development and the EMPr becomes legally binding to the new EA holder.

PART C

8 SITE SPECIFIC ENVIRONMENTAL ATTRIBUTES

If any specific environmental sensitivities/attributes are present on the site which require more specific impact management outcomes and actions, not included in the pre-approved generic EMPr template, to manage impacts, those impact management outcomes and impact management actions must be included in this section. These specific management controls must be referenced spatially, and must include impact management outcomes and impact management actions. The management controls including impact management outcomes and impact management actions must be presented in the format of the pre-approved generic EMPr template. This applies only to additional impact management outcomes and impact management actions that are necessary.

If Part C is applicable to the development as authorised in the EA, it is required to be submitted to the CA together with the BAR or EIAR, for consideration of, and decision on, the application for EA. The information in this section must be prepared by an EAP and the name and expertise of the EAP, including the curriculum vitae are to be included. Once approved, Part C forms part of the EMPr for the site and is legally binding.

This section will **not be required** should the site contain no specific environmental sensitivities or attributes.

Please refer to the table below, which summarises the mitigation measures recommended by both the Specialists and Cape EAPrac. This table summarises the mitigations, and details whether they should be included as conditions of approval, or whether they have been included as actions in the EMPr. The table furthermore reflects to which stage of the development the proposed mitigation measures are applicable. In instances where suggested mitigations have already been incorporated into the design phase, they have been reflected as such.

Table 2: Recommended mitigation measures required for the construction, operation and decommissioning of the Hotazel 2 Solar PV development.

Mitigation	Condition of Approval	Included in EMPr	Construction Phase	Operational Phase	Decommissioning Phase
Terrestrial Ecology					
Restrict impact to development footprint only and limit disturbance spreading into surrounding areas.	✓	✓	✓	✓	✓
As far as possible, locate infrastructure within areas that have been previously disturbed or in areas with lower sensitivity scores.		✓	✓		
Avoid sensitive features and habitats when locating infrastructure		✓	✓		
No mass clearing of vegetation for the PV arrays should be allowed. Vegetation to be brush cut and only in exceptional circumstances completely cleared.	✓	✓	✓		
Compile a Rehabilitation Plan		✓	✓	✓	✓

Mitigation	Condition of Approval	Included in EMPr	Construction Phase	Operational Phase	Decommissioning Phase
Compile an Alien Plant Management Plan, including monitoring, to ensure minimal impacts on surrounding areas.		✓	✓	✓	✓
Where possible, access roads should be located along existing farm, access and district roads		✓	✓		
Access to sensitive areas outside of development footprint should not be permitted during construction.		✓	✓		
Undertake monitoring to evaluate whether further measures would be required to manage impacts.		✓	✓	✓	
Undertake a biodiversity walkthrough of the site prior to construction.	✓	✓	✓		
A detailed pre-construction walk-through survey will be required during a favourable season to locate any additional individuals of protected plants. This survey must cover the footprint of all approved infrastructure, including internal access roads.	✓	✓	✓		
If possible, plants should be conserved in situ, along with an appropriate buffer zone around them		✓	✓		
Plants lost to the development can be rescued and planted in appropriate places in rehabilitation areas. This will reduce the irreplaceable loss of resources as well as the cumulative effect		✓	✓		
A Plant Rescue Plan must be compiled to be approved by the appropriate authorities.		✓	✓		
Restrict impact to development footprint only and limit disturbance spreading into surrounding areas.	✓		✓		
No speeding on access roads – install speed control measures, such as speed humps, if necessary		✓	✓		
No hunting of protected species.		✓	✓		
Personnel to be educated about protection status of species, including distinguishing features to be able to identify protected species.		✓	✓		
Report any sightings to conservation authorities		✓	✓	✓	
Undertake dust fall-out monitoring and manage, where necessary	✓	✓	✓		
Compile and implement an alien management plan, which highlights control priorities and areas and provides a programme for long-term control. This should include any areas within proximity to the project that may be affected by the project, or that could have an influence on invasion by alien invasive plants into the property		✓	✓	✓	
Undertake regular monitoring to detect alien invasions early so that they can be controlled.		✓	✓	✓	
Avoid development of designated sensitive habitats		✓	✓		
Appropriate lighting should be installed to minimize impacts on nocturnal animals.		✓	✓	✓	
Construction activities should not be undertaken at night.		✓	✓		
Compile and implement a stormwater management plan, which highlights control priorities and areas and provides a programme for long-term control		✓	✓		
Undertake regular monitoring to detect erosion features early so that they can be controlled		✓	✓	✓	
Avoid building on or near steep or unstable slopes.		✓	✓		
No additional clearing of vegetation should take place without a proper assessment of the environmental impacts and authorization from relevant authorities		✓		✓	
Additional infrastructure to be located adjacent to existing infrastructure		✓		✓	
No driving of vehicles off-road		✓		✓	

Mitigation	Condition of Approval	Included in EMPr	Construction Phase	Operational Phase	Decommissioning Phase
No illegal collecting of any individual fauna or flora		✓	✓	✓	
No hunting of protected species or hunting of any other species without a valid permit.		✓	✓	✓	
Personnel to be educated about protection status of species, including distinguishing features to be able to identify protected species		✓	✓	✓	
Avifaunal					
Activity should as far as possible be restricted to the footprint of the infrastructure.		✓	✓		✓
Measures to control noise and dust should be applied according to current best practice in the industry.		✓	✓		✓
Maximum use should be made of existing access roads and the construction of new roads should be kept to a minimum as far as practical.		✓	✓		✓
Access to the rest of the property must be restricted.		✓	✓		
A single perimeter fence should be used .		✓		✓	
With regards to the infrastructure within the substation yard and inverter station, the hardware is too complex to warrant any mitigation for electrocution at this stage. It is rather recommended that if any impacts are recorded once operational, site specific mitigation be applied reactively.		✓		✓	
Palaeontology					
Implementation of a chance find procedure		✓	✓		
Visual					
Investigate the possibility of undertaking screening		✓	✓		
Plan to maintain the height of structures as low as possible;		✓	✓		
Minimise disturbance of the surrounding landscape and maintain existing vegetation around the development		✓	✓		
Reinstate any areas of vegetation that have been disturbed during construction		✓	✓		
Remove all temporary works		✓		✓	
Monitor rehabilitated areas post-construction and implement remedial actions;		✓		✓	
Minimise disturbance and maintain existing vegetation as far as is possible both within and surrounding the development area.		✓		✓	
Remove infrastructure not required for the post-decommissioning use of the site		✓			✓
All alien plant re-growth must be monitored and should these alien plants reoccur these plants should be re-eradicated. The scale of the development does however not warrant the use of a Landscape Architect and / or Landscape Contractor.		✓	✓		
It is further recommended that a comprehensive rehabilitation / monitoring plan be implemented from the project onset to ensure a net benefit to the environment within all areas that will remain undisturbed.		✓	✓	✓	
Vegetation clearing should occur in a phased manner in accordance with the construction programme to minimise erosion and/or run-off		✓	✓		
Large tracts of bare soil will either cause dust pollution or quickly erode and then cause sedimentation in the lower portions of the catchment. Suitable dust and erosion control mitigation measures should be included in the EMP to mitigate these impacts.		✓	✓		
Any stormwater within the development area must be handled in a suitable manner, i.e. separate clean and dirty water streams around the plant, and install stilling basins to capture large volumes of run-off, trap sediments and reduce flow velocities (e.g. water used when washing the PV Panels).		✓	✓	✓	
Suitable stormwater management features with erosion control measures (gabions) should also be installed in areas where concentrated flows are		✓	✓		

Mitigation	Condition of Approval	Included in EMPr	Construction Phase	Operational Phase	Decommissioning Phase
anticipated					
Strict use and management of all hazardous materials used on site.		✓	✓		
Strict management of potential sources of pollution (e.g. litter, hydrocarbons from vehicles & machinery, cement during construction, etc.) within demarcated / banded areas		✓	✓		
Containment of all contaminated water by means of careful run-off management on site.		✓	✓		
Appropriate ablution facilities should be provided for construction workers during construction and on-site staff during the operation of the facility. These must be situated outside of any delineated water courses or the buffers shown		✓	✓		
Strict control of the behaviour of construction workers.		✓	✓		
Appropriate waste management		✓	✓		
Working protocols incorporating pollution control measures (including approved method statements by the contractor) should be clearly set out in the Construction Environmental Management Plan (CEMP) for the project and strictly enforced.		✓	✓		
Agriculture					
Installation of proper Erosion control, and drainage on the access road.		✓	✓		
Dust control on the access road during construction.		✓	✓		
The general objective is to position the PV facilities on the lowest potential soil and not in places that may have impact on agricultural activities, drainage lines and places with a sensitive nature. Existing road alignments are followed and roads upgraded for use during the live span of facility. With the appropriate planning, the same live style can be achieved during the lease period of the facility from the land so occupied by the facility.		✓	✓		
Refuelling normally takes place in the workshop of the control building. A designated area for refuelling must be constructed with an impervious floor and low wall that will keep the spillage inside. Any spillage must be cleaned with absorbent material as soon as possible and disposed into clearly marked containers. Where spillage takes place, contaminated soil must be excavated and replaced with unpolluted soil. The contaminated soil should be collected by a licenced landfill contractor.		✓	✓		
Ensure that most infrastructure features are erected on transformed or non-arable land. Implement stormwater management as an integral part of planning and as a guideline for the positioning of structures. Use existing roads and conservation structures to the maximum in the planning and operation phases. Rehabilitate disturbed areas as soon as possible after construction.		✓	✓		
Erosion and sediment control with proper water run-off control planning.		✓	✓		
Appropriate handling and storage of chemicals and hazardous substances and waste should be done.		✓	✓		
When spillage accidentally takes place, it should be removed and replaced with unpolluted soil. The clean soil can be sourced from excavations nearby. The polluted soil must be piled at a temporary storage facility with a firm waterproof base and is protected from inflow of storm water. It must have an effective drainage system to a waterproof spillage collection area. Contaminated soil must be disposed of at a hazardous waste storage facility.		✓	✓		
Clear trees and bushes selectively, leaving grass un-disturbed. Use mechanised machinery when installing posts to eliminate need for foundations. Construct on alternate strips to combat possible erosion.		✓	✓		

Mitigation	Condition of Approval	Included in EMPr	Construction Phase	Operational Phase	Decommissioning Phase
Establish structures on the contour. Use grass strips to regulate flow speed		✓	✓		
Social					
Where reasonable and practical, the proponent should appoint local contractors and implement a 'locals first' policy, especially for semi and low-skilled job categories. However, due to the low skills levels in the area, the majority of skilled posts are likely to be filled by people from outside the area.		✓	✓		
Before the construction phase commences the proponent should meet with representatives from the JMLM to establish the existence of a skills database for the area. If such as database exists it should be made available to the contractors appointed for the construction phase.		✓	✓		
Where feasible, efforts should be made to employ local contactors that are compliant with Broad Based Black Economic Empowerment (BBBEE) criteria;		✓	✓		
The local authorities, community representatives, and organisations on the interested and affected party database should be informed of the final decision regarding the project and the potential job opportunities for locals and the employment procedures that the proponent intends following for the construction phase of the project.		✓	✓		
Where feasible, training and skills development programmes for locals should be initiated prior to the initiation of the construction phase		✓	✓		
The recruitment selection process should seek to promote gender equality and the employment of women wherever possible.		✓	✓		
The JMLM in conjunction with the local business sector and representatives from the local hospitality industry, should identify strategies aimed at maximising the potential benefits associated with the project.		✓	✓		
Where possible, the proponent should make it a requirement for contractors to implement a 'locals first' policy for construction jobs, specifically for semi and low-skilled job categories;		✓	✓		
The proponent should consider the option of establishing a Monitoring Forum (MF) in order to monitor the construction phase and the implementation of the recommended mitigation measures. The MF should be established before the construction phase commences, and should include key stakeholders, including representatives from local communities, local JMLM Councillor for Ward 2, farmers and the contractor(s). The MF should also be briefed on the potential risks to the local community associated with construction workers;		✓	✓	✓	
The proponent and the contractor(s) should, in consultation with representatives from the MF, develop a code of conduct for the construction phase. The code should identify which types of behaviour and activities are not acceptable. Construction workers in breach of the code should be dismissed. All dismissals must comply with the South African labour legislation;		✓	✓	✓	
The proponent and the contractor should implement an HIV/AIDS awareness programme for all construction workers at the outset of the construction phase;		✓	✓		
The construction area should be fenced off before construction commences and no workers should be permitted to leave the fenced off area;		✓	✓		
The contractor should provide transport for workers to and from the site on a daily basis. This will enable the contactor to effectively manage and monitor the movement of construction workers on and off the site.		✓	✓		
Where necessary, the contractors should make the necessary arrangements to enable low and semi-skilled workers from outside the area to return home over weekends and/ or on a regular basis. This would reduce the risk posed to local family structures and social networks;		✓	✓		
The contractor must ensure that all construction workers from outside the area		✓	✓		

Mitigation	Condition of Approval	Included in EMPr	Construction Phase	Operational Phase	Decommissioning Phase
are transported back to their place of residence within 2 days for their contract coming to an end;					
It is recommended that no construction workers, with the exception of security personnel, should be permitted to stay over-night on the site.		✓	✓		
The proponent should implement a policy that no employment will be available at the gate.		✓	✓		
The construction area should be fenced off prior to the commencement of the construction phase. The movement of construction workers on the site should be confined to the fenced off area;		✓	✓		
The proponent must enter into an agreement with the local farmers in the area whereby damages to farm property etc. during the construction phase will be compensated for. The agreement should be signed before the construction phase commences;		✓	✓		
Traffic and activities should be strictly contained within designated areas		✓	✓		
Strict traffic speed limits must be enforced on the farm		✓	✓		
All farm gates must be closed after passing through		✓	✓		
Contractors appointed by the proponent should provide daily transport for low and semi-skilled workers to and from the site. This would reduce the potential risk of trespassing on the remainder of the farm and adjacent properties		✓	✓		
The proponent should hold contractors liable for compensating farmers and communities in full for any stock losses and/or damage to farm infrastructure that can be linked to construction workers. This should be contained in the Code of Conduct to be signed between the proponent, the contractors and neighbouring landowners. The agreement should also cover losses and costs associated with fires caused by construction workers or construction related activities (see below)		✓	✓		
The Environmental Management Plan (EMP) must outline procedures for managing and storing waste on site, specifically plastic waste that poses a threat to livestock if ingested		✓	✓		
Contractors appointed by the proponent must ensure that all workers are informed at the outset of the construction phase of the conditions contained on the Code of Conduct, specifically consequences of stock theft and trespassing on adjacent farms.		✓	✓		
Contractors appointed by the proponent must ensure that construction workers who are found guilty of stealing livestock and/or damaging farm infrastructure are dismissed and charged. This should be contained in the Code of Conduct. All dismissals must be in accordance with South African labour legislation		✓	✓		
The option of establishing a fire-break around the perimeter of the site prior to the commencement of the construction phase should be investigated;		✓	✓		
Contractor should ensure that open fires on the site for cooking or heating are not allowed except in designated areas;		✓	✓		
Smoking on site should be confined to designated areas;		✓	✓		
Contractor should provide adequate fire-fighting equipment on-site, including a fire fighting vehicle;		✓	✓		
Contractor to provide fire-fighting training to selected construction staff		✓	✓		
Dust suppression measures must be implemented on un-surfaced roads, such as wetting on a regular basis and ensuring that vehicles used to transport sand and building materials are fitted with tarpaulins or covers.		✓	✓		
All vehicles must be road-worthy and drivers must be qualified and made aware of the potential road safety issues and need for strict speed limits		✓	✓		
An Environmental Control Officer (ECO) should be appointed to monitor the		✓	✓		

Mitigation	Condition of Approval	Included in EMPr	Construction Phase	Operational Phase	Decommissioning Phase
establishment phase of the construction phase;					
All areas disturbed by construction related activities, such as access roads on the site, construction platforms, workshop area etc., should be rehabilitated at the end of the construction phase		✓	✓		
The implementation of a rehabilitation programme should be included in the terms of reference for the contractor/s appointed		✓	✓		
The implementation of the Rehabilitation Programme should be monitored by the ECO		✓	✓		
Implement a skills development and training programme aimed at maximising the number of employment opportunities for local community members; Maximise opportunities for local content, procurement and community shareholding		✓	✓		
The JMLM should liaise with the proponents of other renewable energy projects in the area to investigate how best the Community Trusts can be established and managed so as to promote and support local, socio-economic development in the region as a whole.		✓	✓		
The JMLM should be consulted as to the structure and identification of potential trustees to sit on the Trust. The key departments in the GLM that should be consulted include the Municipal Managers Office, IDP Manager and LED Manager		✓	✓		
Clear criteria for identifying and funding community projects and initiatives in the area should be identified. The criteria should be aimed at maximising the benefits for the community as a whole and not individuals within the community;		✓	✓		
Strict financial management controls, including annual audits, should be instituted to manage the funds generated for the Community Trust from the SEF plant.		✓	✓		
The proponent should ensure that retrenchment packages are provided for all staff retrenched when the plant is decommissioned.		✓	✓		
All structures and infrastructure associated with the proposed facility should be dismantled and transported off-site on decommissioning		✓	✓		
Revenue generated from the sale of scrap metal during decommissioning should be allocated to funding closure and rehabilitation of disturbed areas.		✓	✓		
Traffic					
Stagger component delivery to site .		✓	✓		✓
Reduce the construction period		✓	✓		✓
The use of mobile batch plants and quarries in close proximity to the site		✓	✓		✓
Staff and general trips should occur outside of peak traffic periods.		✓	✓		✓
Regular maintenance of gravel roads by the Contractor during the construction phase and by Client/Facility Manager during operation phase		✓	✓		✓
Dust Suppression of gravel roads during the construction phase, as required.		✓	✓		✓
Regular maintenance of gravel roads by the Contractor during the construction phase and by Client/Facility Manager during operation phase		✓	✓		✓

APPENDIX 1: METHOD STATEMENTS

To be prepared by the contractor prior to commencement of the activity. The method statements are **not required** to be submitted to the CA.