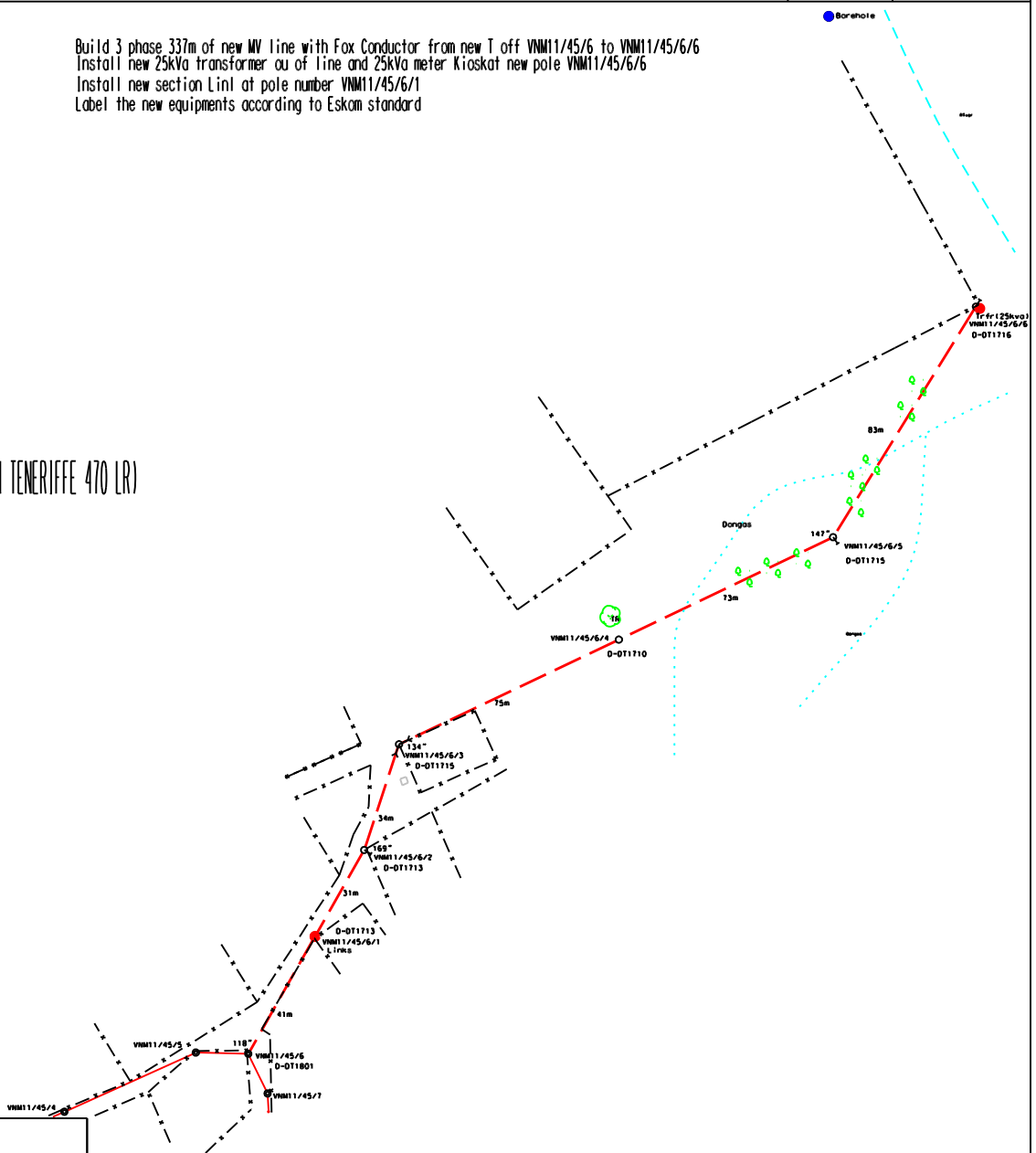


Reference	CAD-Line Survey-LOU
Effective Date	15/10/2015
Revision	01

Description	Quantity
Shrubs > 40 cm	
Trees	
Trees to Trim	
Bushclearing required (m)	150

Build 3 phase 337m of new MV line with Fox Conductor from new T off VNM11/45/6 to VNM11/45/6/6
 Install new 25kVa transformer ou of line and 25kVa meter Kiosk at new pole VNM11/45/6/6
 Install new section Linl at pole number VNM11/45/6/1
 Label the new equipments according to Eskom standard

Steve Biko village(PIVC VAN TENERIFFE 470 LR)



LEGEND	
—	Edge tar
—	Exst. Line
- - - -	New Line
- - - -	Edge gravel road
●	Exst. equipment
⊙	Exst. pole
●	New Equipment
○	New pole

	3	
	2	
	1	
Edwin	0	04/10/2020
SURVEYOR	REV	SURVEY DATE

FEEDER: VNM 22kv
PROJECT NO: L
CONDUCTOR: [FOX 3 Ph]
LENGTH OF LINE: 337m
SURVEYOR: Edwin
DRAWN BY: Edwin

CUSTOMER: Lephallale Municipality
PROPERTY: Farm of PIC VAN TENERIFFE 470 LR
CONTACT DETAILS
SCALE: [1:2 500]
PAGE: [1] of [1]

THIS DRAWING IS THE PROPERTY OF Eskom
 Disclaimer: Eskom is not responsible for any errors displayed on this drawing