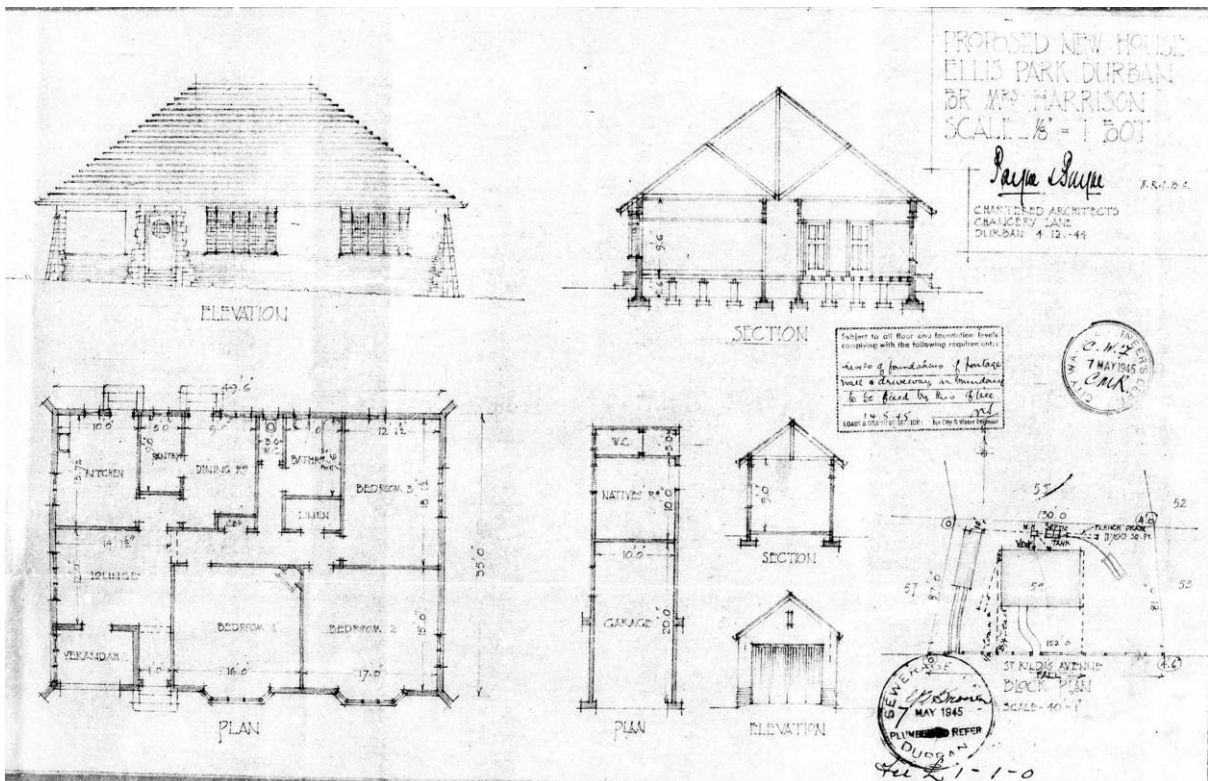




Context of 38 St Kilda Avenue. The Ellis Construction Company Pty Ltd stipulated the roof forms and materials through a clause in the Title Deeds.

Source: eThekwini GIS



The original plans for the house at 38 St Kilda Avenue. Designed by Wilfred Stonehouse Payne of Payne and Payne Chartered Architects for Mrs Harrison in 1944, the plans were approved in 1945.

Source: eThekwini Records.



Aerial photo from 1961, proving that the house is over 60 years old.

Source : eThekwini Records



Early photograph of Ellis Park, 1941.

Source: Durban North – past/present/future. Facebook.



The aerial view from the south.

Source: Google Earth



Part south elevation, facing St Kilda Avenue.



Part south elevation.



Entrance.



South elevation.



East facing existing aluminium awnings and timber doors.



North east facing veranda.



Part north facing façade.



Kitchen door and flanking north facing windows.



North facing back garden.



North west corner.



West façade.