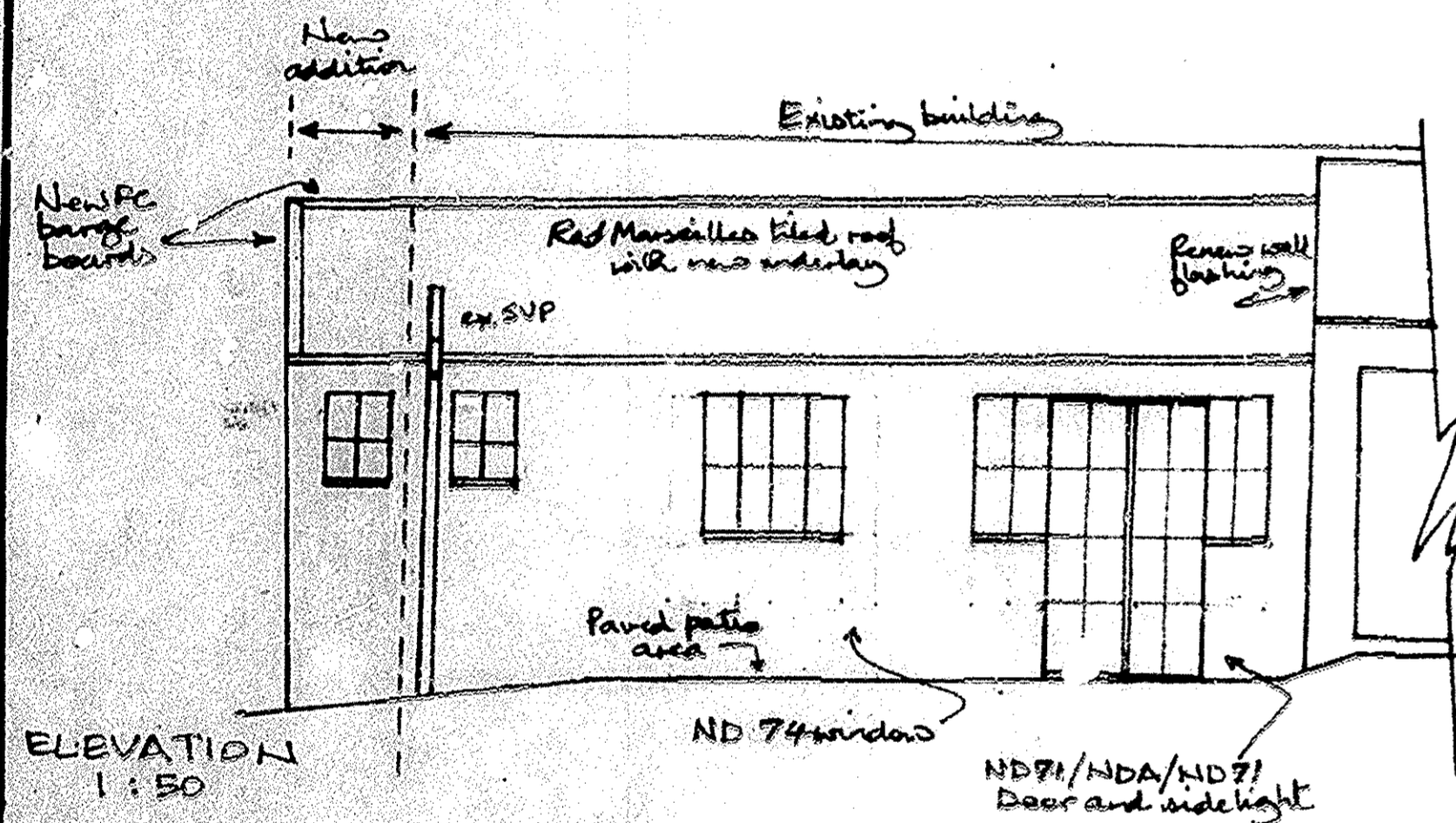
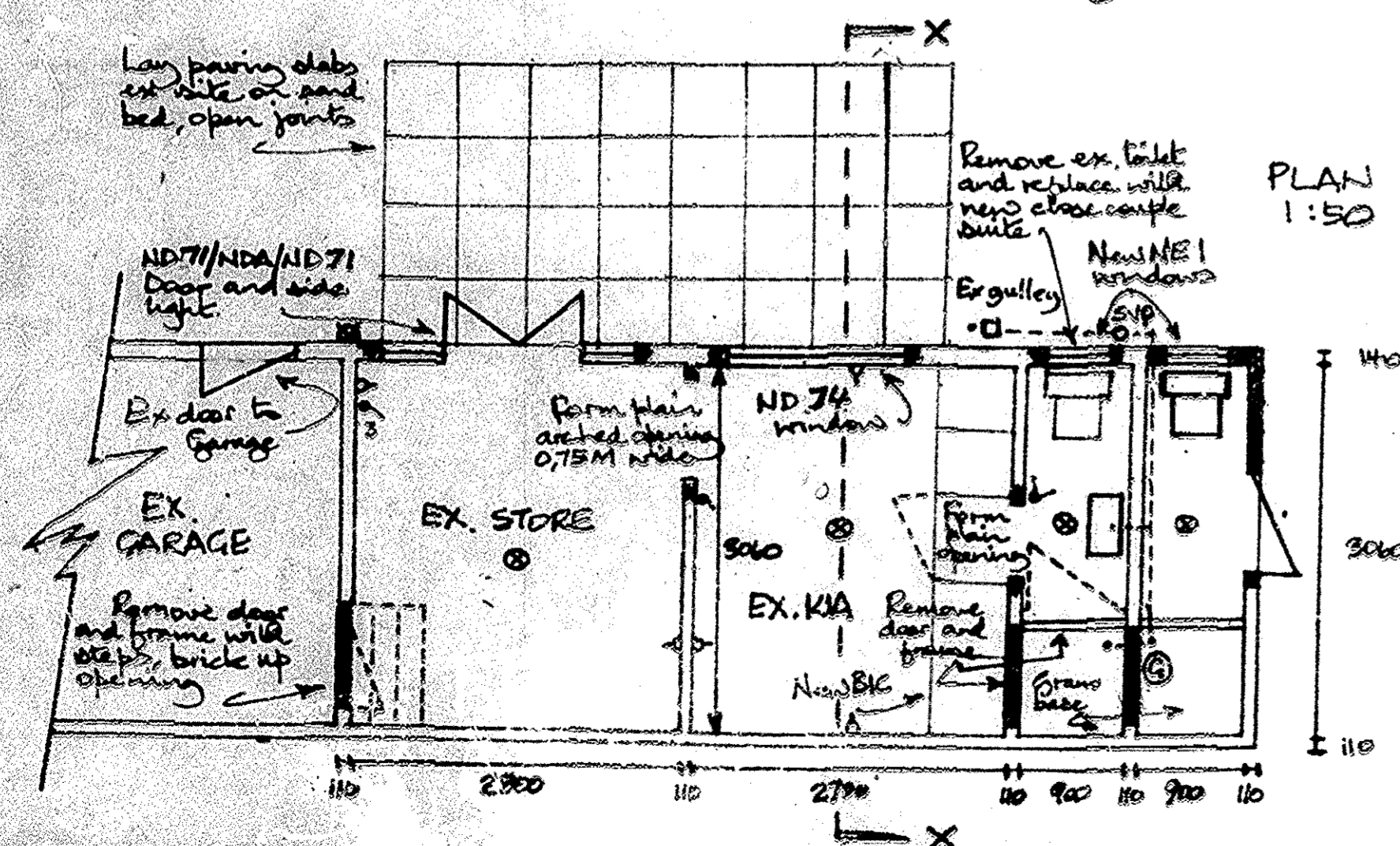


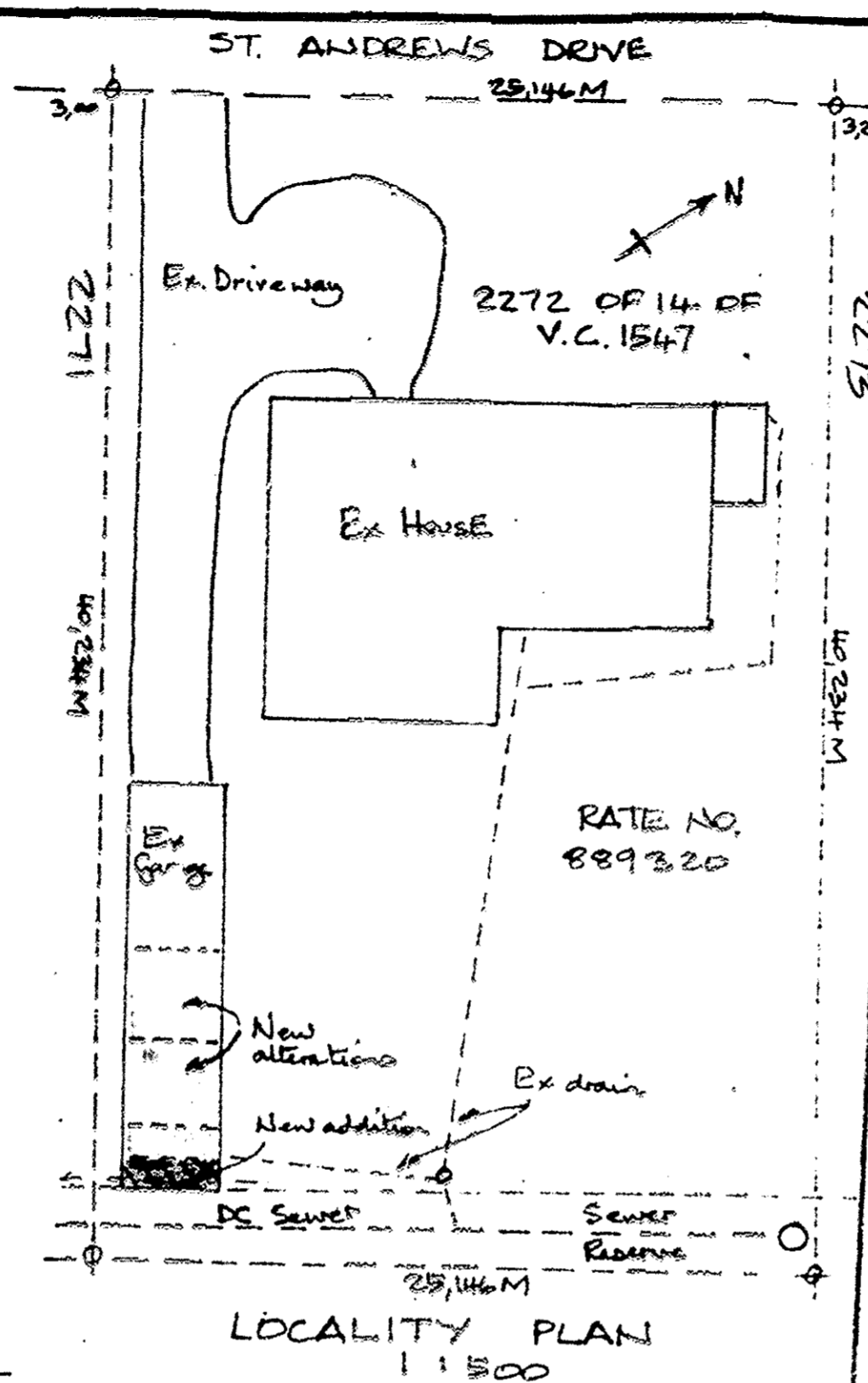
SECTION X-X  
1:50



ELEVATION  
1:50



PLAN  
1:50



LOCALITY PLAN  
1:500

SUBSTITUTED PLAN

AS BUILT

3/3/92

INCORPORATING  
APPROVED PLAN

No.	APP.
No.	APP.
No.	APP.
No.	APP.
No.	APP.

ANCILLARY UNIT  
CONVERSION AT  
38 ST. ANDREWS DRIVE  
DURBAN NORTH

Date: October '91  
 Drawn by: A.H.  
 Scale: 1:50 and 1:500  
 Owners Signature: J.P.B.

Drawing No. 911031A8/2

- All doors and windows are Cottage pane pattern, in cottage guard, if not had
- Remove door and frame in ex. KIA, brick up opening
- Remove door and frame in Toilet, form new plate, provide shower base, fit new bath, tap 520x480 basin, replace ex. toilet with new close couple suite.
- Extend wall and roof at new Servants toilet, fit new low level w.c. suite and shower.
- Fit new 100lt. gutter at high level in Servants toilet to supply both showers and basin.
- Fit new rhinoboard ceiling to all rooms except Servants toilet.
- New underlay to all roof areas replacing flashings and barge boards.
- Re-tilt ex. door and frame in Servants toilet.
- 20 amp circuit breaker to be fitted in ex. DB.
- Plaster two walls of ex. Store.
- Form weathered 100mm high steel hold at NDA door.