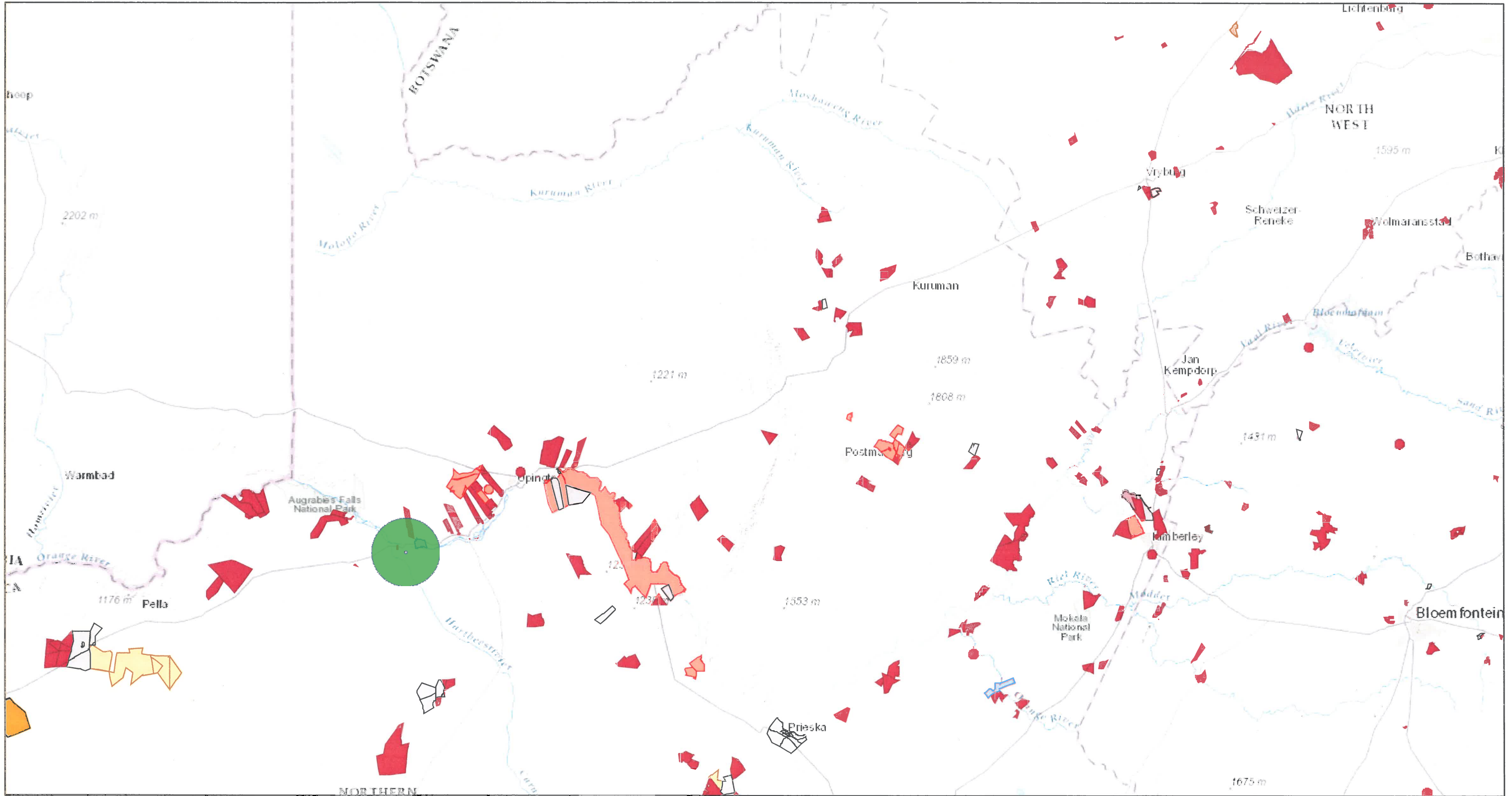


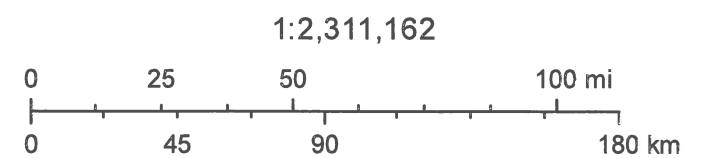
ArcGIS Web Map



February 27, 2017

- REEA_OR_2016_Q3**
- Onshore Wind and Solar PV
 - Solar CPV
 - Solar CSP
 - Solar CSP and PV
 - Onshore Wind
 - No Technology

Figure 3 - Potential cumulative impact radius for proposed solar PV development site relative to other approved renewable energy projects in the region. Proposed site is at centre of green circle (with 30km radius) as indicated on map. Although this is a reapplication, the original proposed development site which was authorised, was not included on the above map provided by the DEA website: (<https://dea.maps.arcgis.com/apps/webappviewer>).



Sources: Esri, HERE, DeLorme, Intermap, increment P Corp., GEBCO, USGS, FAO, NPS, NRCAN, GeoBase, IGN, Kadaster NL, Ordnance Survey, Esri Japan, METI, Esri China (Hong Kong), swisstopo, MapmyIndia, © OpenStreetMap contributors, and the GIS User Community