

SITE PHOTOGRAPHS



Plate 1: The Dorpspruit River which is in a canalised state, with a walkway along the side.



Plate 2: Examples of some of the bridges crossing the Dorpspruit River.

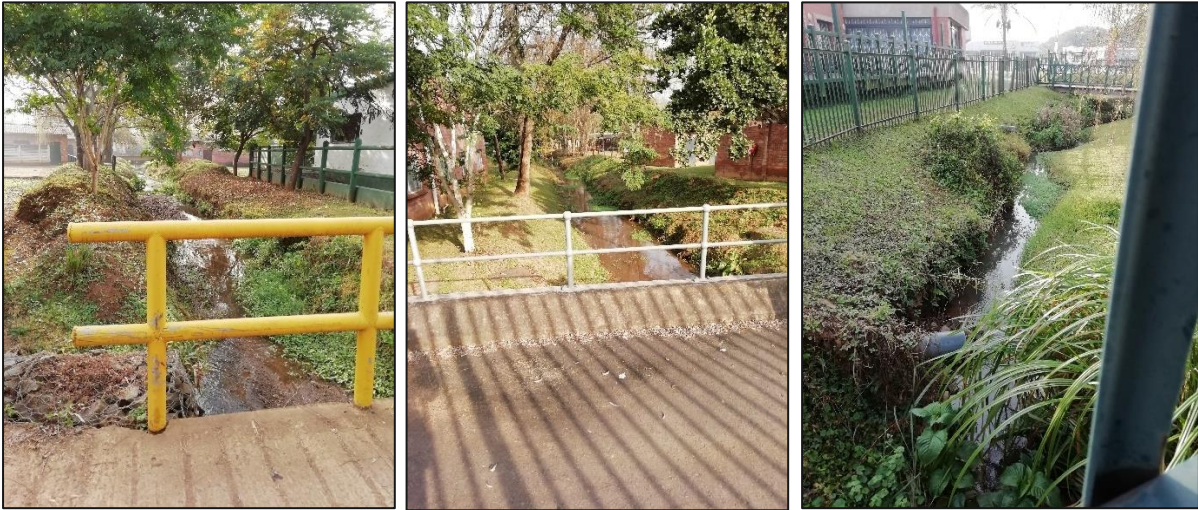


Plate 3: The Dorpspruit Tributary, and bridges and walkway crossings.



Plate 4: Manicured lawn fields within the site.



Plate 5: Communications infrastructure (reception towers) within the site.



Plate 6: Billboard located within the site.



Plate 7: Main Gate Post and Gate House which constitutes an important heritage structure.



Plate 8: Industrial Hall which constitutes an important heritage building.



Plate 9: Crafts hall which constitutes an important heritage building.



Plate 10: Some of the many existing buildings within the site.



Plate 11: Existing temporary animal pens used to house livestock temporarily during the annual shows.



Plate 12: Indigenous plants and trees planted in various parts of the site for ornamental purposes as 'garden' species.