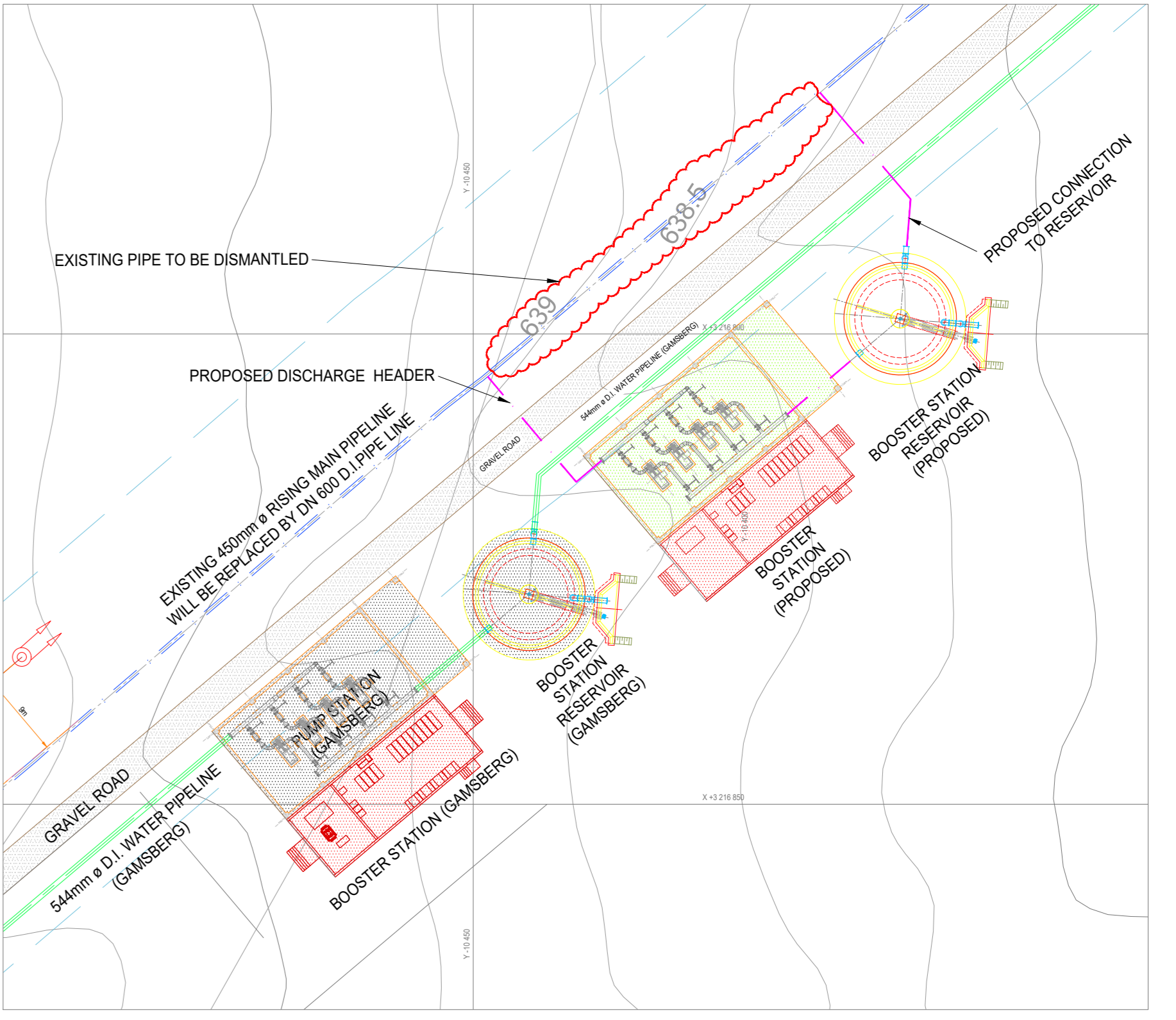
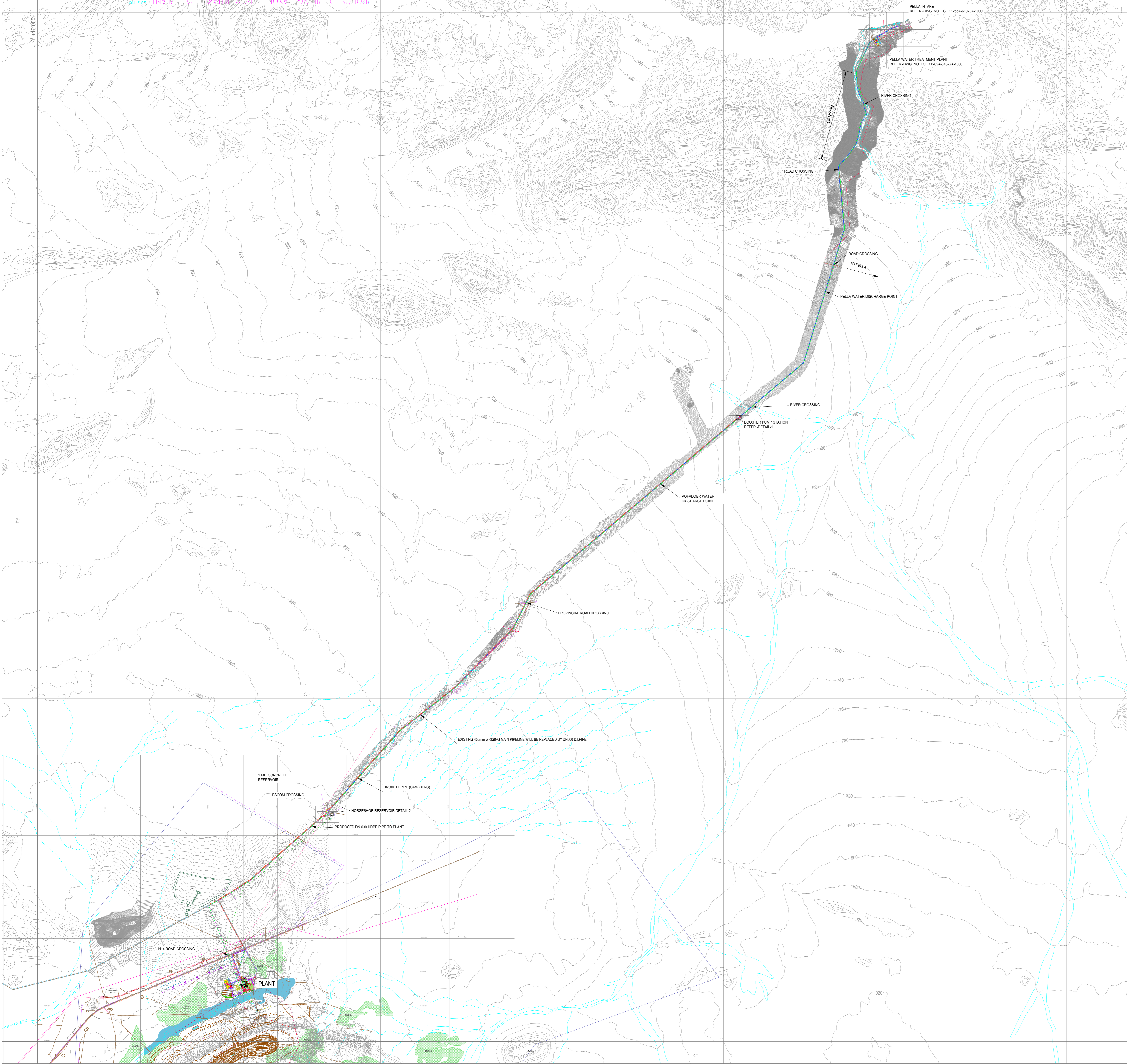
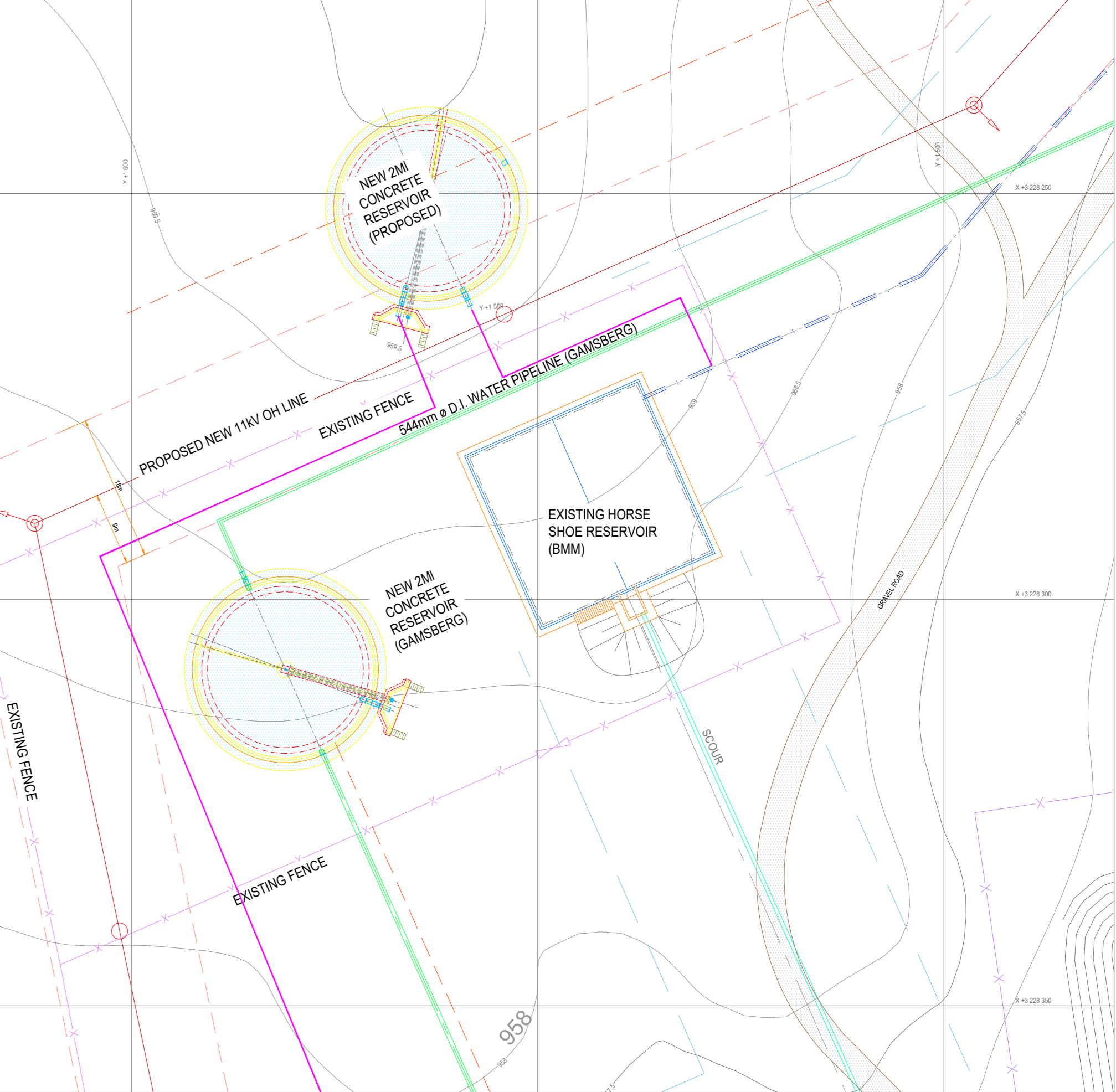


APPENDIX C: FACILITY ILLUSTRATION



DETAIL-1



DETAIL-2

DO NOT SCALE

IF PRELIMINARY ISSUES ARE NOT TO BE USED FOR CONSTRUCTION / FABRICATION BUT ARE ISSUED FOR LIMITED PURPOSES ONLY AS INDICATED IN THE SMALL BLOCK ABOVE THIS BLOCK.
CONSTRUCTION / FABRICATION WORK IS PERMITTED ON 'R' (RELEASED) ISSUES ONLY.
INFORMATION CONTAINED WITHIN 'HOLD' IS NOT RELEASED FOR CONSTRUCTION / FABRICATION. FIELD MUST GET DESIGN OFFICE TO CLEAR 'HOLD' IN TIME BEFORE PROCEEDING WITH ANY CONSTRUCTION / FABRICATION WORK RELATED TO 'HOLD'.

Proprietary rights of the information contained herein belong to TCE. This information is intended to be used for the mentioned purpose only. In case of misuse of information and any claim arising therefrom, TCE and its subsidiaries will not be liable for the same.

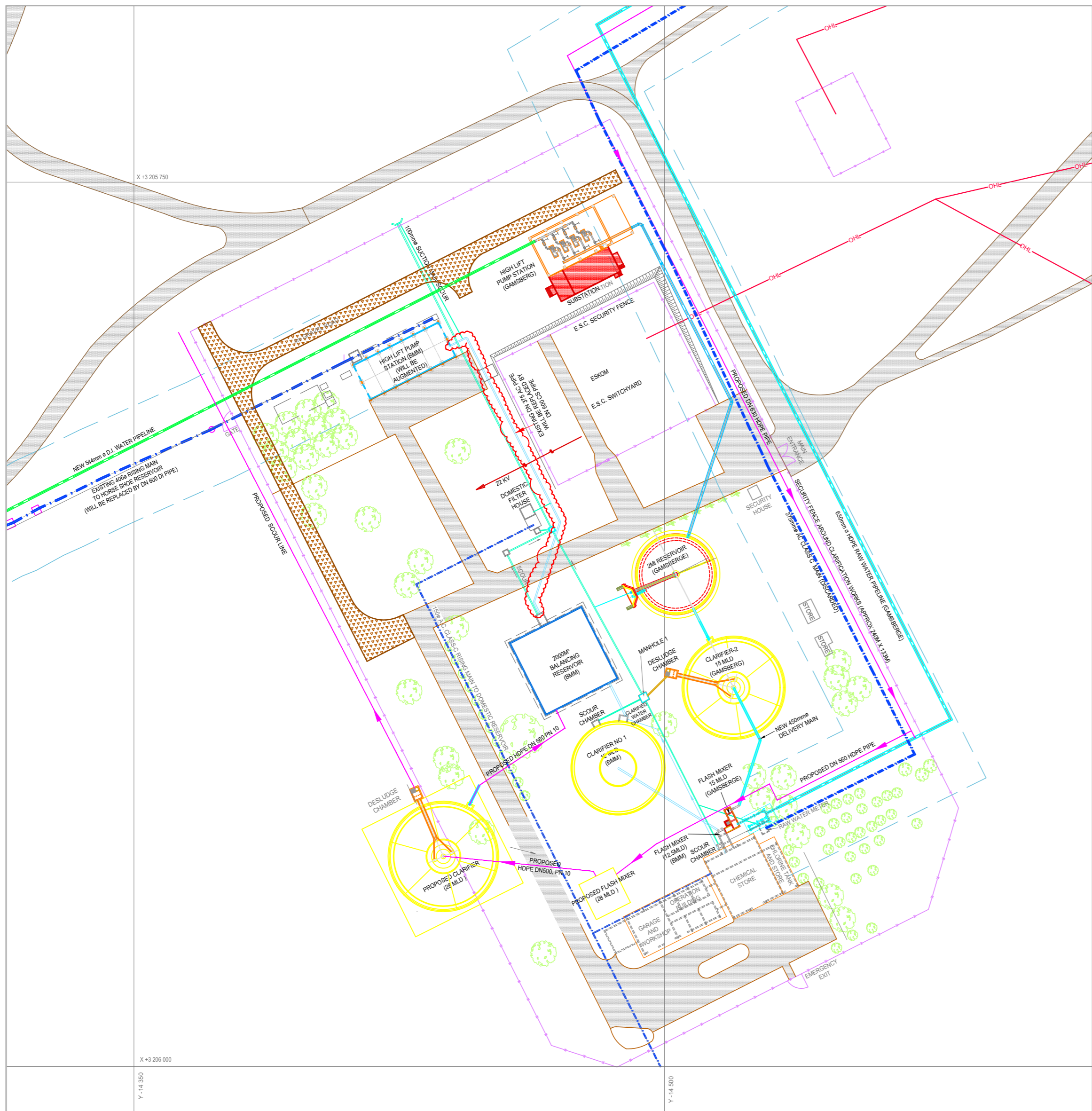
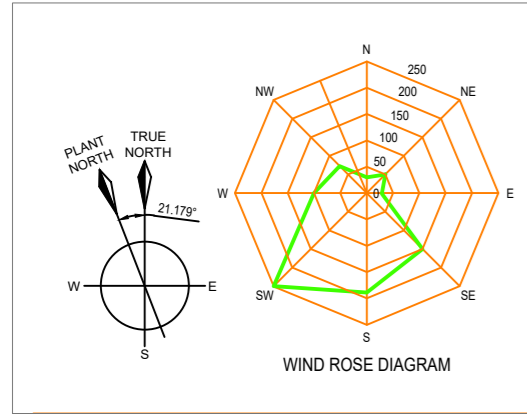
SCN	INITIALS	REVISIONS	SCN	INITIALS	REVISIONS	SCN	INITIALS	REVISIONS	SCN	INITIALS	REVISIONS	SCN	INITIALS	REVISIONS	SCN	INITIALS	REVISIONS	SCN	INITIALS	REVISIONS
PG	INITIALS	RS	RS	PD	CV	EL	IC	ME	PD/WK	PD	08-08-2019	ISSUE	DRN	DSN	CHD	CLEARED	PL/PW	APPD	DATE	

BLACK MOUNTAIN MINING (Pty) LTD.
GAMBERG 300KTPA ZINC SMELTER REFINERY PROJECT

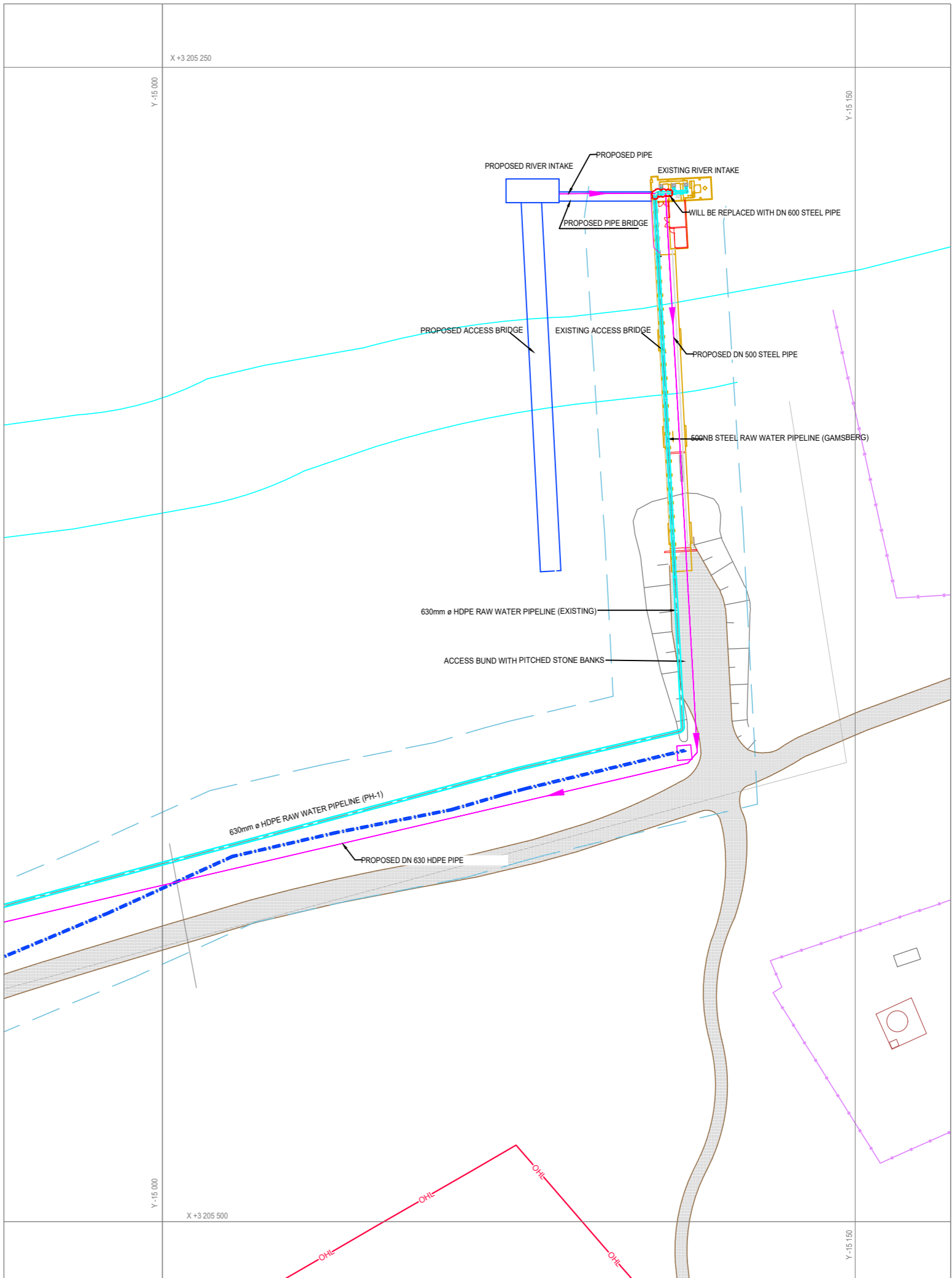
PROPOSED PIPING LAYOUT FROM INTAKE TO PLANT

TATA CONSULTING ENGINEERS LIMITED
MUMBAI

SCALE: _____ DWG NO: ICE.11265A-610-GA-1005 ISSUE: PO
DC & DISC: _____



PROPOSED LAYOUT AT PELLA WATER TREATMENT PLANT



PROPOSED LAYOUT AT WATER INTAKE FACILITIES

SIGNATURES														
NO	DATE	DRN	DSN	CHD	CV	EL	IC	ME	PD/RK	PD	DATE			
[REVISIONS TABLE WITH SIGNATURES]														
DO NOT SCALE														
IF PRELIMINARY ISSUES ARE NOT TO BE USED FOR CONSTRUCTION FABRICATION BUT ARE ISSUED FOR LIMITED PURPOSES ONLY AS INDICATED IN THE SMALL BLOCK ABOVE THIS BLOCK CONSTRUCTION / FABRICATION WORK IS PERMITTED ON RELEASED ISSUES ONLY INFORMATION CONTAINED WITHIN 'FIELD' IS NOT RELEASED FOR CONSTRUCTION / FABRICATION. FIELD MUST GET DESIGN OFFICE TO CLEAR HOLDING IN TIME BEFORE PROCEEDING WITH ANY CONSTRUCTION / FABRICATION WORK RELATED TO HOLDING.														
Primary rights of the information contained herein belong to TCE. This information is intended to be used for the mentioned purpose only in case of misuse of information and any claim arising therefrom, use and consequence will be on the party misusing the information.														
FILE NAME :	vedanta										BLACK MOUNTAIN MINING (Pty) LTD. GAMSBERG 300KTPA ZINC SMELTER REFINERY PROJECT PROPOSED LAYOUT FOR EXTERNAL WATER SYSTEM FACILITIES AT PELLA			
		TATA CONSULTING ENGINEERS LIMITED MUMBAI												
		SCALE : 2:1 DC & DISC : KOLKATA									TCE.11265A-ME-6129-GA-60014 ISSUE PO			