

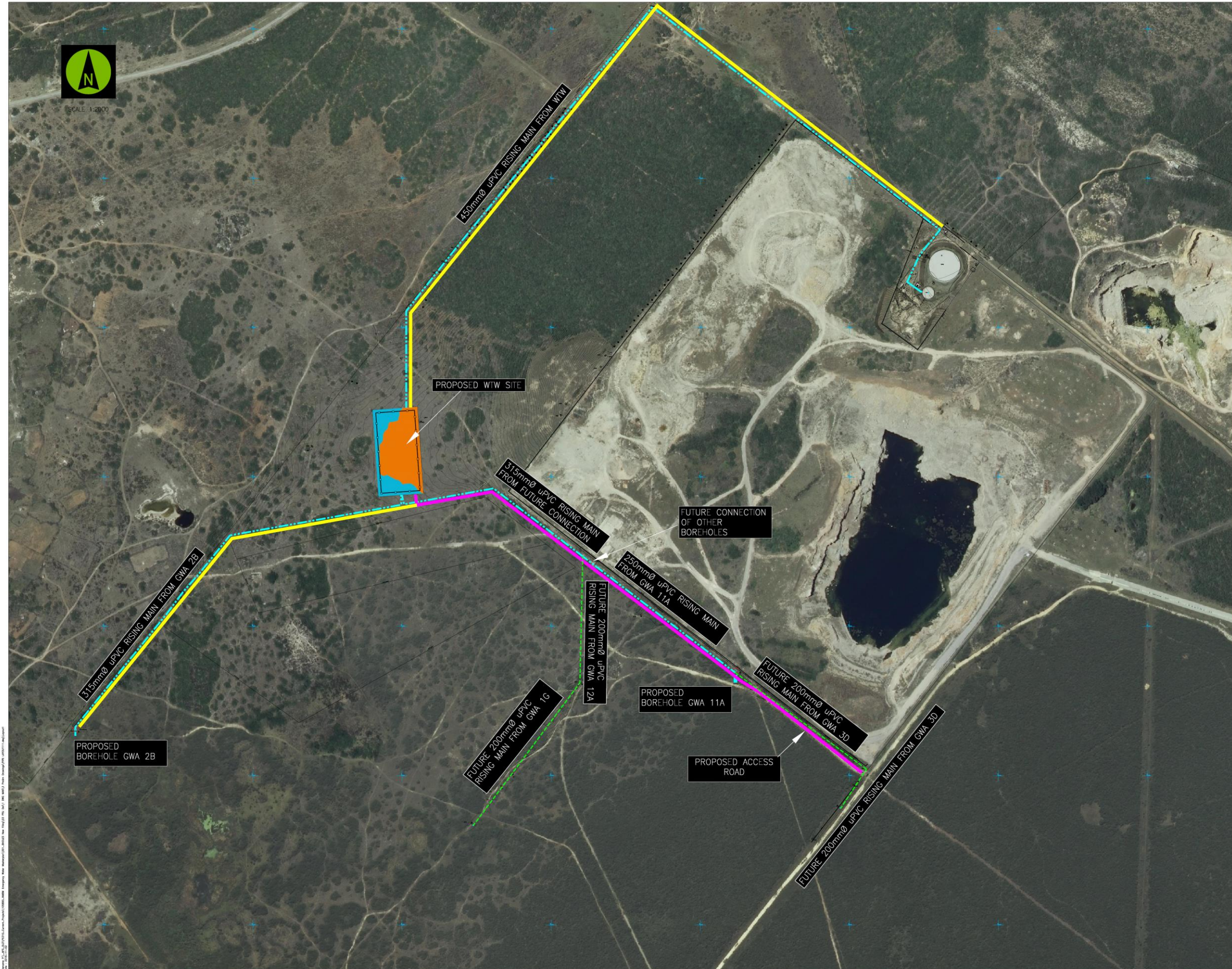


APPENDIX C: FACILITY ILLUSTRATION(S)

"Innovation for Sustainable Development"

[†] Floor Room 274 • Beacon Hill • Hockley Close • Kind William's Town • 5600 | Private Bag X0054 • 5605 • Republic of South Africa
Tel; 043 605 7099 • Fax: 043 605 7300 | Email: • Web: www.dedeat.gov.za

VERSION 1 dated 8 December 2014



LEGEND:

- OUT: [Orange box]
- FILL: [Blue box]
- PROPOSED WATER PIPE: [Yellow line]
- PROPOSED BOREHOLE PUMP: [Pump symbol]
- PROPOSED BOUNDARY FENCE: [Dashed line]
- PROPOSED PIPE SERVICE ROAD: [Yellow line]
- PROPOSED ACCESS ROAD: [Pink line]
- FUTURE WATERPIPE: [Green dashed line]

aurecon
www.aurecongroup.com

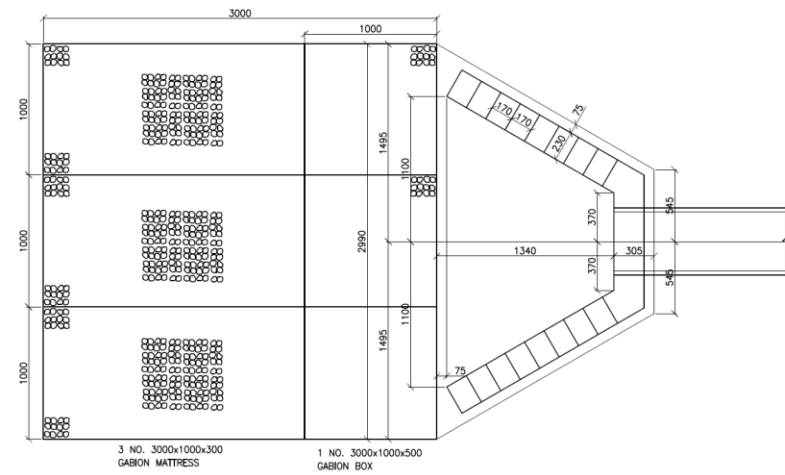
CLIENT
nelson mandela bay MUNICIPALITY

REV	DATE	REVISION DETAILS	APPROVED
A	04-11-16	ISSUED FOR INFORMATION	

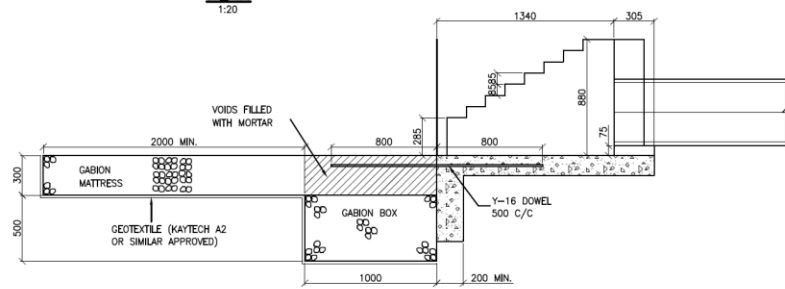
PROJECT
COEGA KOP WELLFIELD

TITLE
PROPOSED WATER TREATMENT SITE

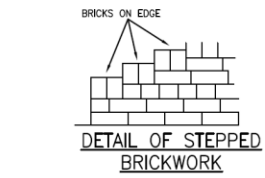
DRAWN S Solomon	DESIGNED S Solomon	PRELIMINARY NOT FOR CONSTRUCTION
CHECKED S Nel	PROJECT No. 105890	
APPROVED	SCALE AS SHOWN	SIZE A0
	DRAWING No. 03-WR-002	REV A



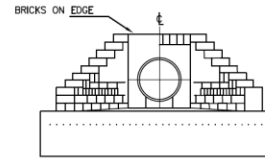
PLAN
1:20



SECTION AA
1:20
BRICK HEADWALL DETAILS AT OUTLET

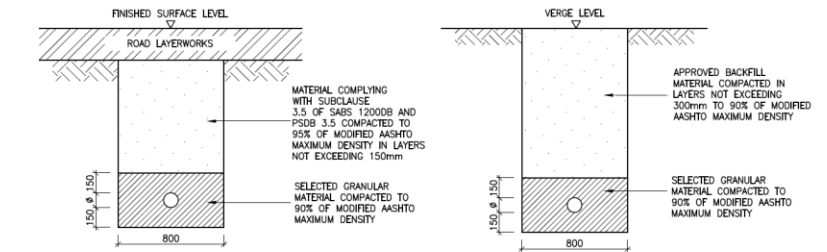


DETAIL OF STEPPED
BRICKWORK



FRONT ELEVATION

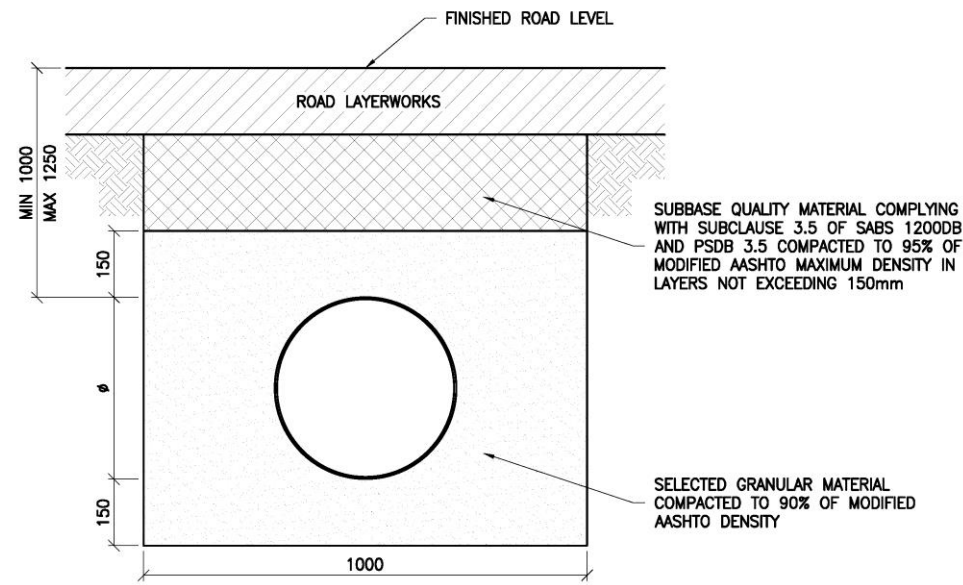
- NOTE:**
1. IF, IN THE OPINION OF THE ENGINEER, THE IN-SITU MATERIAL UNDER THE STRUCTURE IS UNSUITABLE HE SHALL ORDER ITS REMOVAL AND REPLACEMENT BY SUBBASE QUALITY MATERIAL.
 2. THE MATERIAL FOR A DEPTH OF 150mm UNDER THE APRON SLAB IS TO BE COMPACTED TO A MINIMUM DENSITY OF 90% MODIFIED AASHTO.
 3. FORMWORK ONLY REQUESTED FOR APRON SLAB. CONCRETE IN CUT-OFF WALL BELOW THIS LEVEL TO BE CAST DIRECTLY AGAINST SIDES OF THE EXCAVATION.
 4. CONCRETE TO BE CLASS 20/19.
 5. BRICK IN BOND OF 2 STRETCHERS, 1 HEADER COURSE UNPLASTERED AND WITH FLUSH JOINTS. TOP COURSE TO BE HEADER ON EDGE.
 6. PROTECTION BY MEANS OF GABION STRUCTURES OR STONE PITCHING TO BE PLACED AT END OF APRON AS ORDERED BY THE ENGINEER.
 7. GROUND SURFACE ALL AROUND HEADWALL TO BE TRIMMED TO AT LEAST 150mm LOWER THAN THE TOP OF THE BRICKWORK.
 8. ALL DIMENSIONS IN MILLIMETRES.
 9. WEEPHOLES IN BRICKWORK TO BE PROVIDED AS DIRECTED BY THE ENGINEER.



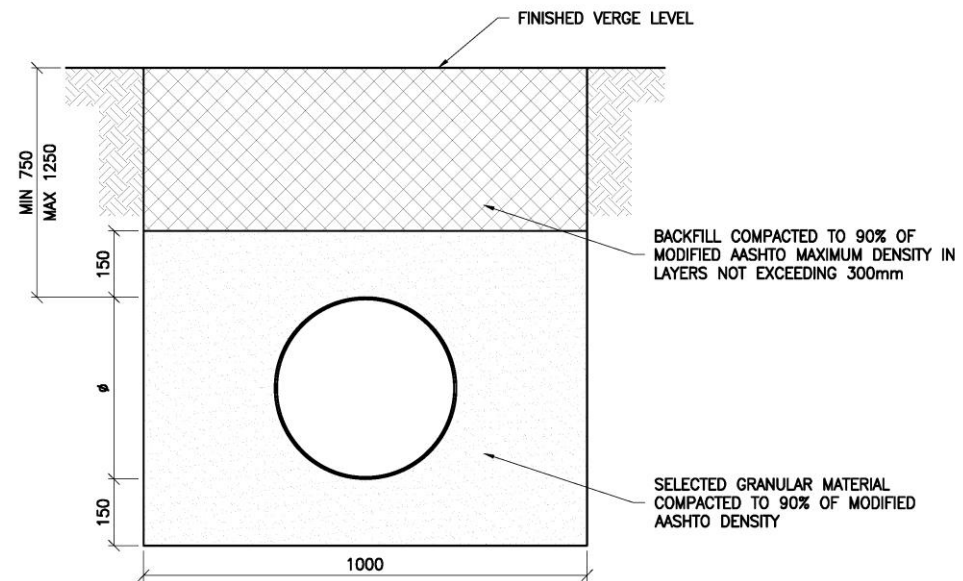
TRENCH DETAIL FOR GRAVITY WASTE LINE IN
AREAS SUBJECT TO TRAFFIC LOADS FOR
PIPE DIAMETER 110mm

TRENCH DETAIL FOR GRAVITY WASTE LINE IN
AREAS NOT SUBJECT TO TRAFFIC LOADS
FOR PIPE DIAMETER 110mm

TRENCH DETAILS

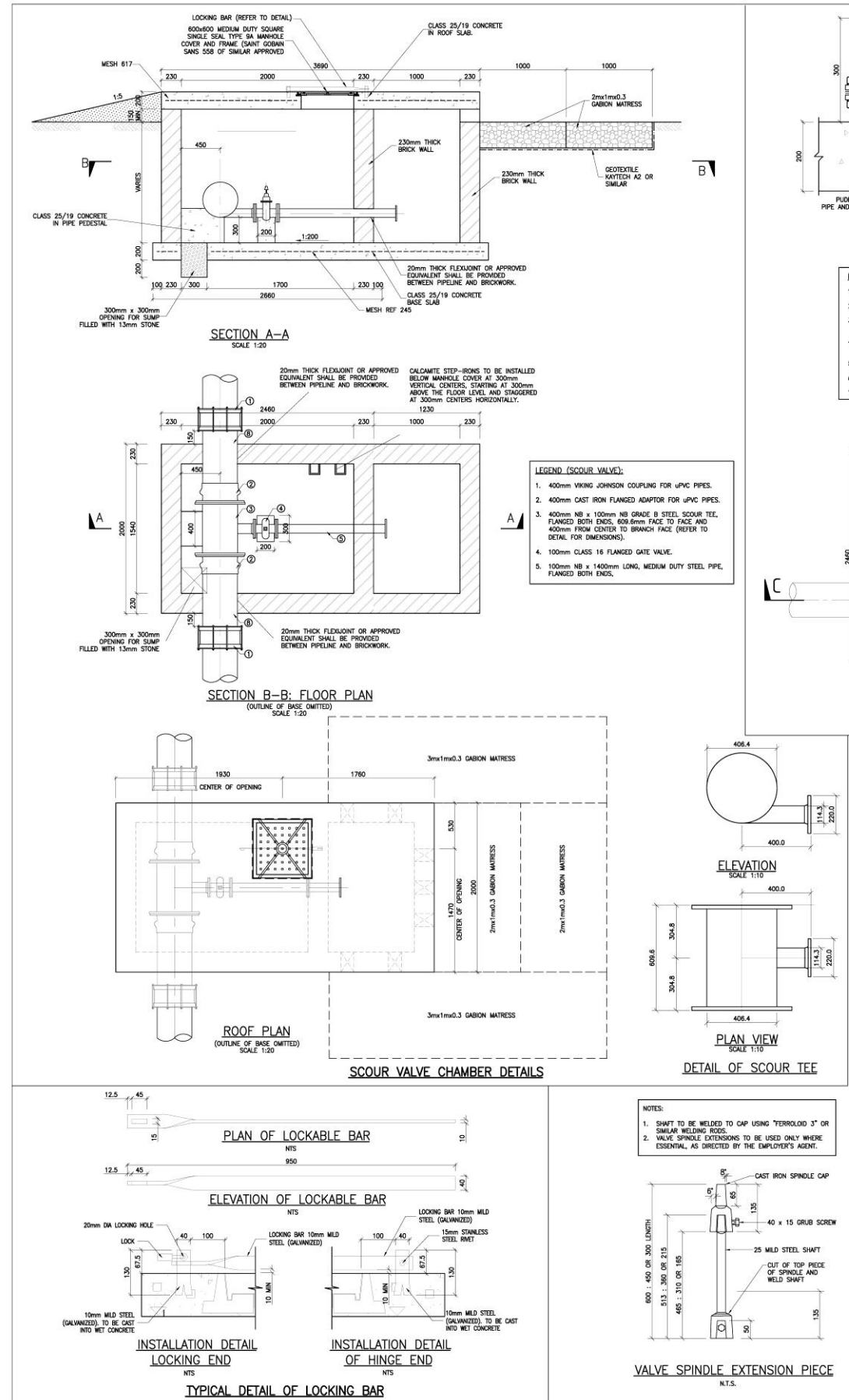


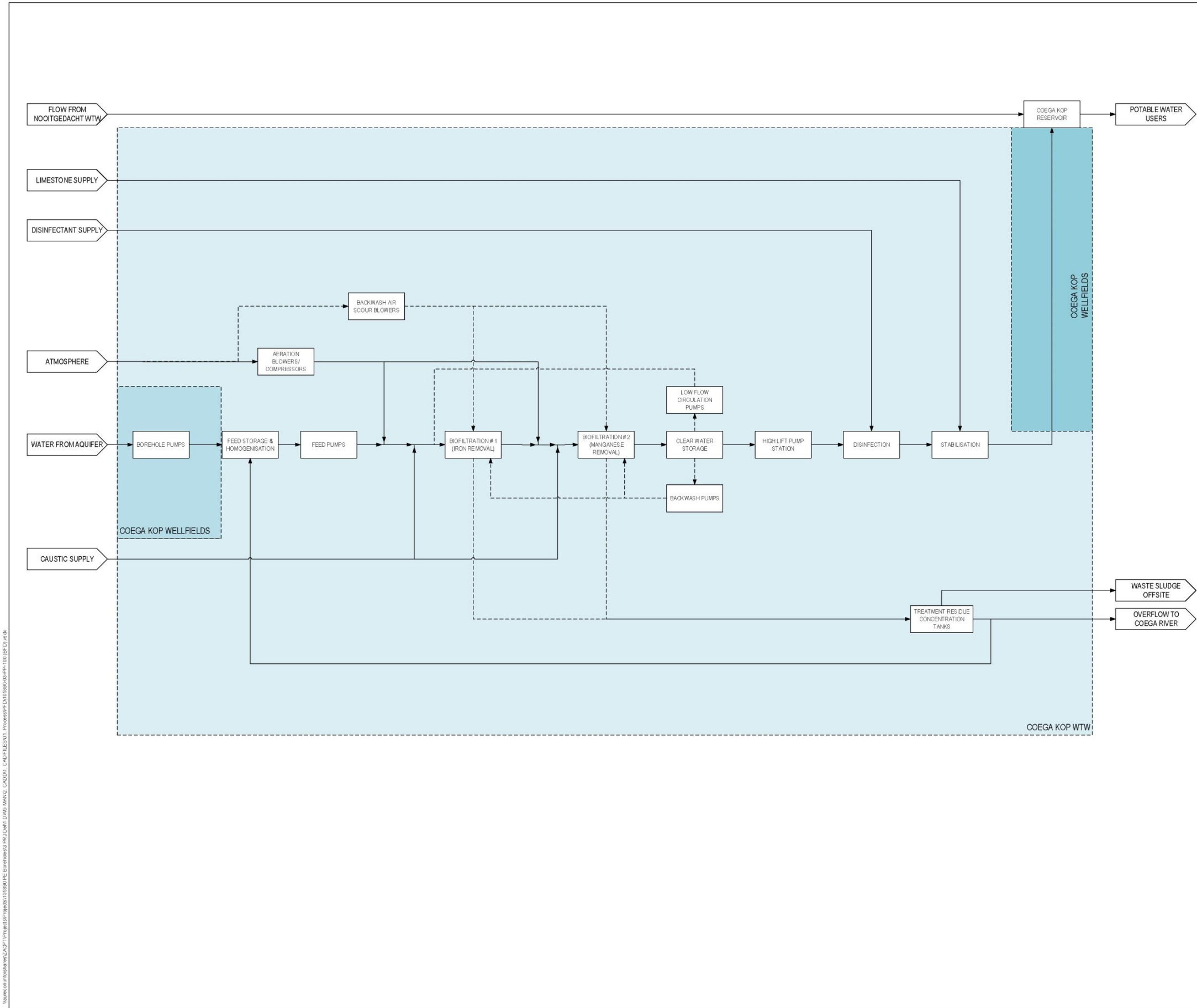
TRENCH DETAIL FOR WATER MAINS IN AREAS SUBJECT TO TRAFFIC LOADS FOR PIPE DIAMETERS OF 315mm UP TO AND INCLUDING 400mm
SCALE 1:10



TRENCH DETAIL FOR WATER MAINS IN AREAS NOT SUBJECT TO TRAFFIC LOADS FOR PIPE DIAMETERS OF 315mm UP TO AND INCLUDING 400mm
SCALE 1:10

TYPICAL TRENCH DETAILS





NOTES:

LEGEND:

- CONSTANT FLOW
- - - - - INTERMITTENT FLOW
- [Dashed Box] COEGA KOP WTW
- [Solid Box] COEGA KOP WELLFIELDS PIPELINES AND TELEMETRY



CLIENT

REV	DATE	REVISION DETAILS	APPROVED
A			

SCALE	SIZE	PRELIMINARY NOT FOR CONSTRUCTION
NTS	A1	
DRAWN	APPROVED	
D.PETRIE	DATE	
DESIGNED		
D.PETRIE		
CHECKED		
B.THEUNISSEN		

PROJECT

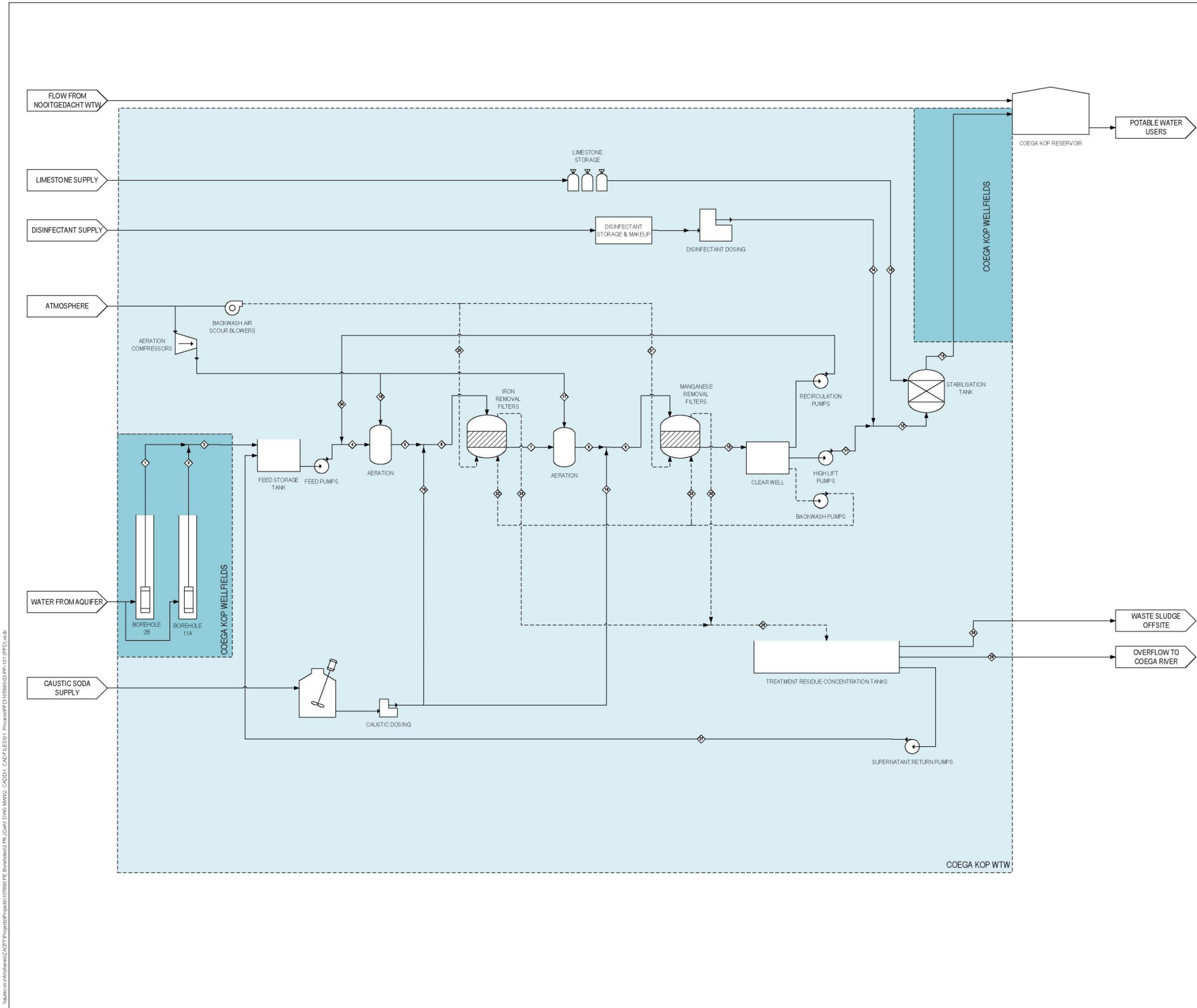
COEGA KOP WELLFIELDS – PHASE THREE

TITLE

WATER TREATMENT WORKS
OVERALL BLOCK FLOW DIAGRAM

PROJECT NO.	WKS	TYPE	DISC	NUMBER	REV
105890	03		PP	100	A

H:\aurecon\105890\105890\105890\PE\Bombed\3 TR_D\01 DWG\MAN2_CADD1_CAD\FLE001_Preview\FD105890-03-PP-100 (BFD).dwg



NOTES:

LEGEND:

- > CONSTANT FLOW
- - - - -> INTERMITTENT FLOW
- [Light Blue Dashed Box] COEGA KOP WTW
- [Dark Blue Solid Box] COEGA KOP WELLFIELDS PIPELINES AND TELEMETRY

aurecon
www.aurecongroup.com

CLIENT

REV	DATE	REVISION DETAILS	APPROVED
A			

SCALE	SIZE	PRELIMINARY NOT FOR CONSTRUCTION
NTS	A1	
DRAWN	APPROVED	
DESIGNED	DATE	
CHECKED		
BTHEUNISSEN		

PROJECT

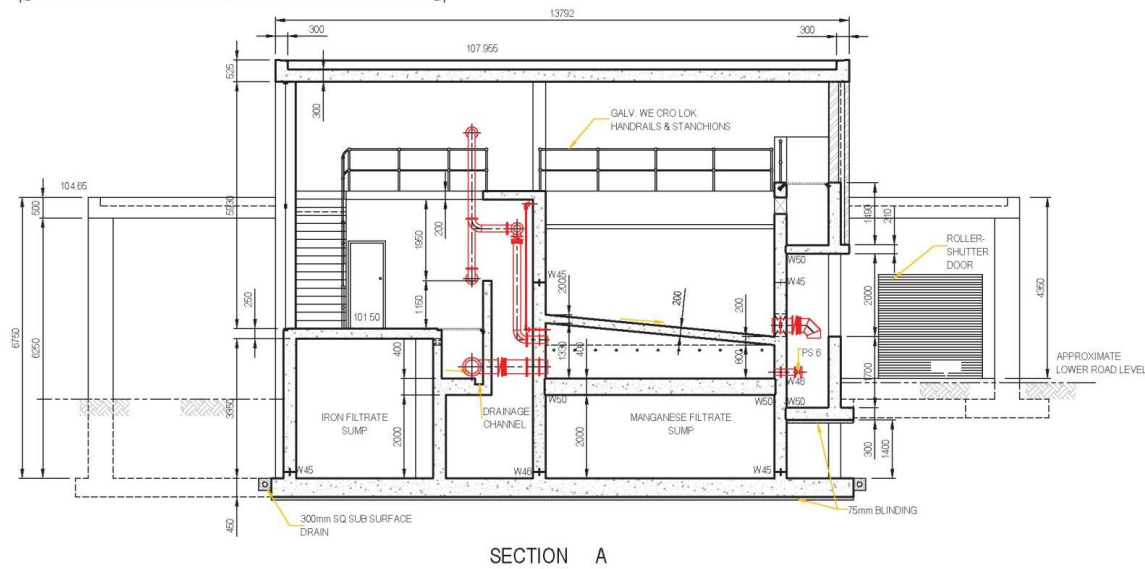
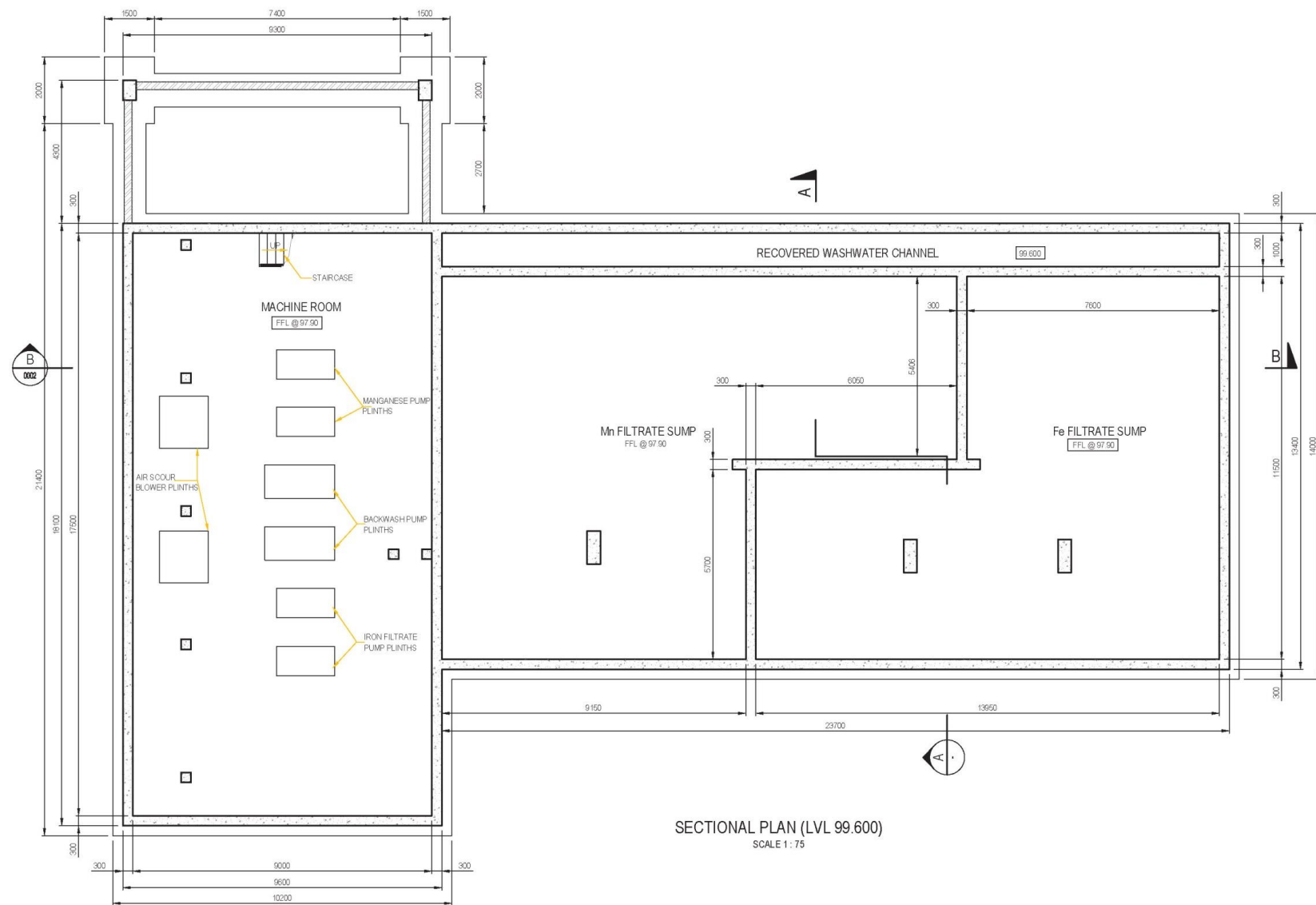
COEGA KOP WELLFIELDS – PHASE THREE

TITLE

WATER TREATMENT WORKS
OVERALL BLOCK FLOW DIAGRAM

PROJECT No.	WWS	TYPE	DISC	NUMBER	REV
105890	-	03	-	PP	- 100 - A

H:\aurecon\infrastructure\2021\Projects\Phase3\105890\PE_Bombardier3 TR_Draft DWG_MAND_CADD1_CAD\FLE001 - Process\FFD\105890-03-PP-101 (PPD).indd



NOTES:

- EQUIPMENT TO BE PROVIDED BY MECHANICAL AND ELECTRICAL CONTRACTOR SHOWN IN RED
- ALL DIMENSIONS TO BE VERIFIED BEFORE COMMENCING WITH ANY MANUFACTURING OR CONSTRUCTION.

REFERENCE:

- FOR MORE SYMBOLS, STAMPS, SCALE BARS GO TO:
(X) CAD Standards & Documentation/Aurecon/All/Asload/Blocks.
- FOR STANDARD NOTES, DETAILS GO TO:
(X) CAD Standards & Documentation/Aurecon/Civ/Water/Autocad/Stdngs/Asper.

aurecon
www.aurecongroup.com

CLIENT

nelson mandela bay
PORT ELIZABETH | UITENHAGE | DESPATCH

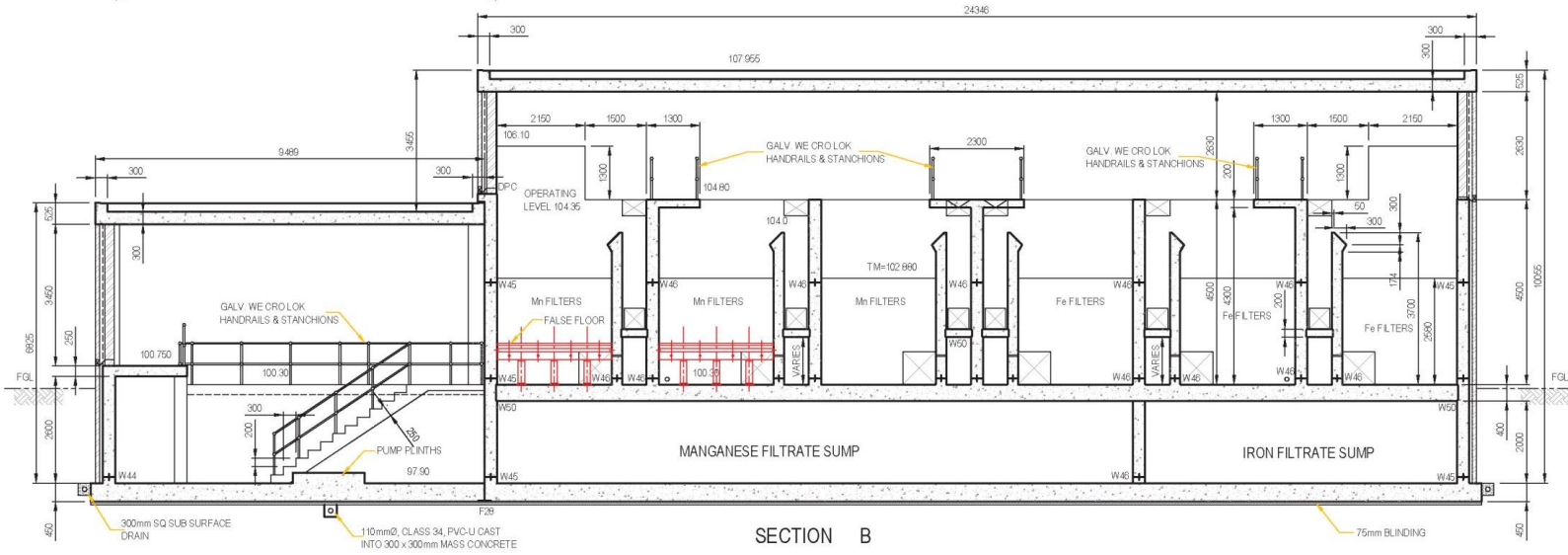
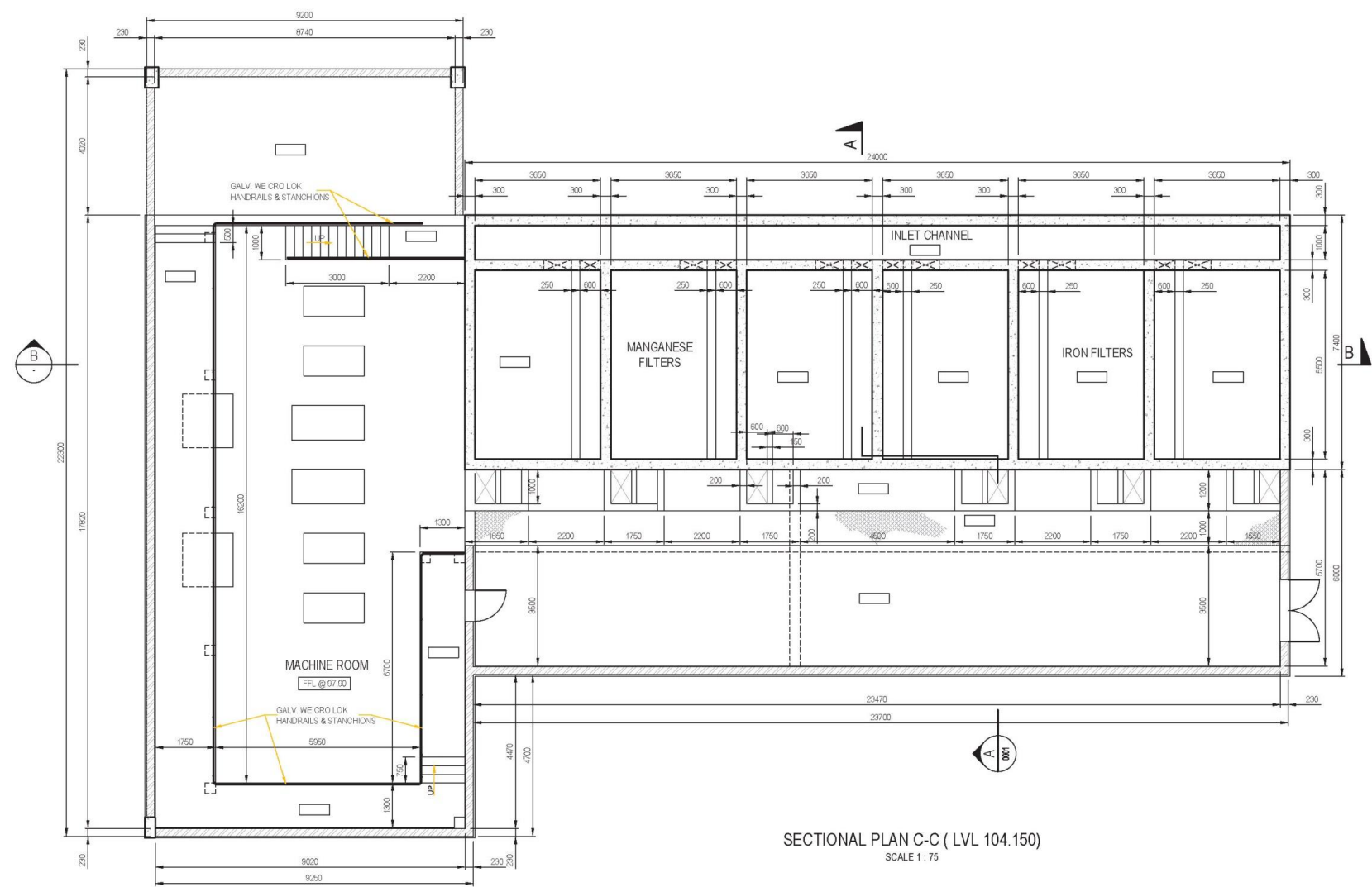
REV	DATE	REVISION DETAILS	APPROVED
TO	10/03/15	FOR INFORMATION	

SCALE 1:75	SIZE A1	PRELIMINARY NOT FOR CONSTRUCTION
DRAWN JB STRYDOM	APPROVED	
DESIGNED G. du TOIT	DATE	
CHECKED G. du TOIT		

PROJECT
MOTHERWELL BOREHOLES
WATER TREATMENT WORKS

TITLE
BIOFILTER
LAYOUT & SECTIONS
SHEET 1 OF 2

DRAWING NUMBER					
PROJECT No.	WBS	TYPE	DISC.	NUMBER	REV
105890	- 0000	- WTW	- CS	- 0001	- T0



NOTES:

- EQUIPMENT TO BE PROVIDED BY MECHANICAL AND ELECTRICAL CONTRACTOR SHOWN IN RED.
- ALL DIMENSIONS TO BE VERIFIED BEFORE COMMENCING WITH ANY MANUFACTURING OR CONSTRUCTION.

REFERENCE:

- FOR MORE SYMBOLS, STAMPS, SCALE BARS GO TO:
(K) CAD Standards & Documentation/Aurecon/All/Asobad/Blocks.
- FOR STANDARD NOTES, DETAILS GO TO:
(K) CAD Standards & Documentation/Aurecon/Civ-Water/AutoCAD/Stdgts/Asper.



REV	DATE	REVISION DETAILS	APPROVED
TO	10/03/15	FOR INFORMATION	

SCALE	1:75	SIZE	A1	PRELIMINARY NOT FOR CONSTRUCTION
DRAWN	JB STRYDOM	DESIGNED	G. du TOIT	
CHECKED	G. du TOIT	DATE		

PROJECT
MOTHERWELL BOREHOLES
WATER TREATMENT WORKS

TITLE
BIOFILTER
LAYOUT & SECTIONS
SHEET 2 OF 2

DRAWING NUMBER					
PROJECT No.	WBS	TYPE	DISC.	NUMBER	REV
105890	0000	- WTW -	CS -	0002	- T0