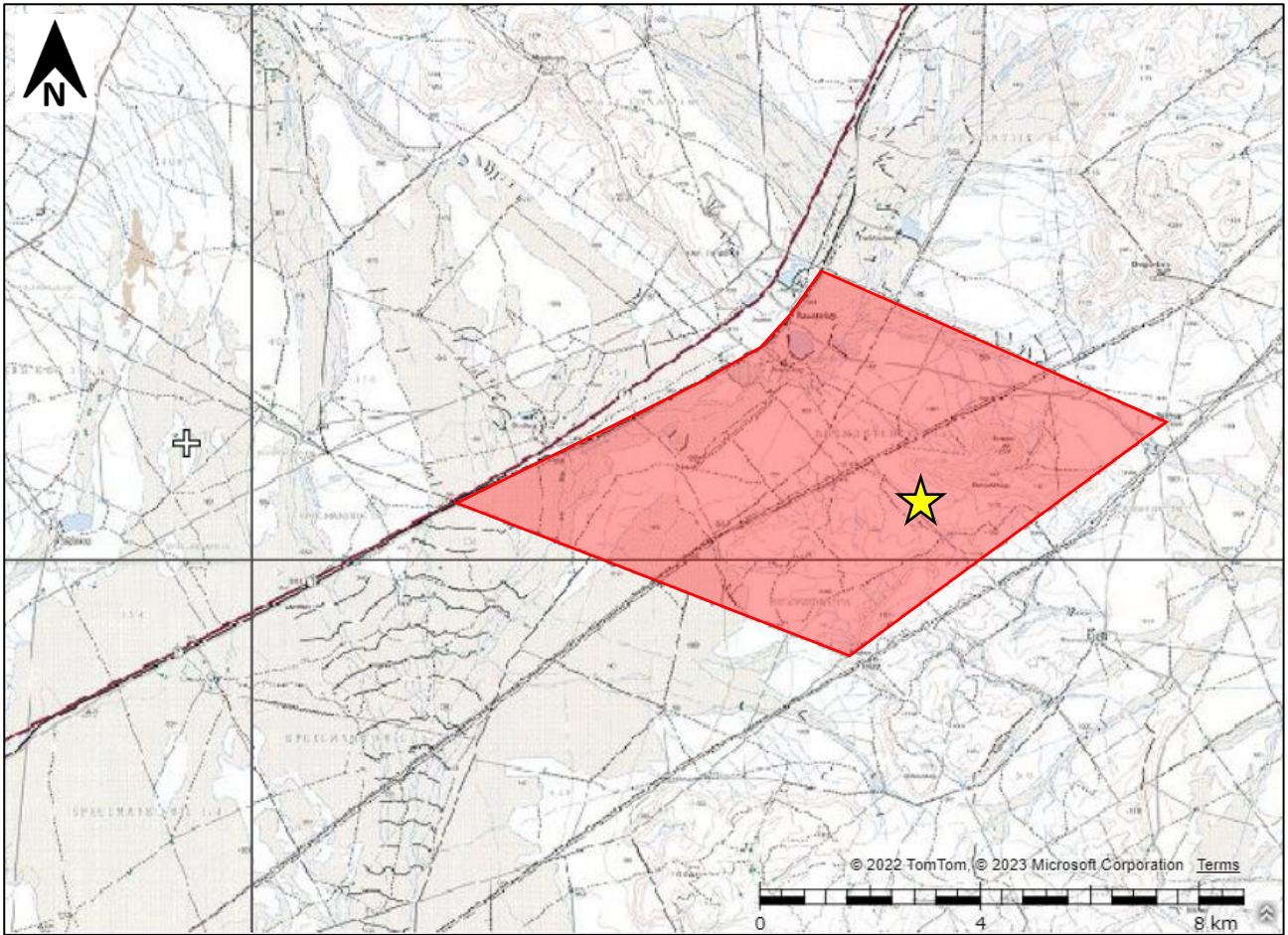


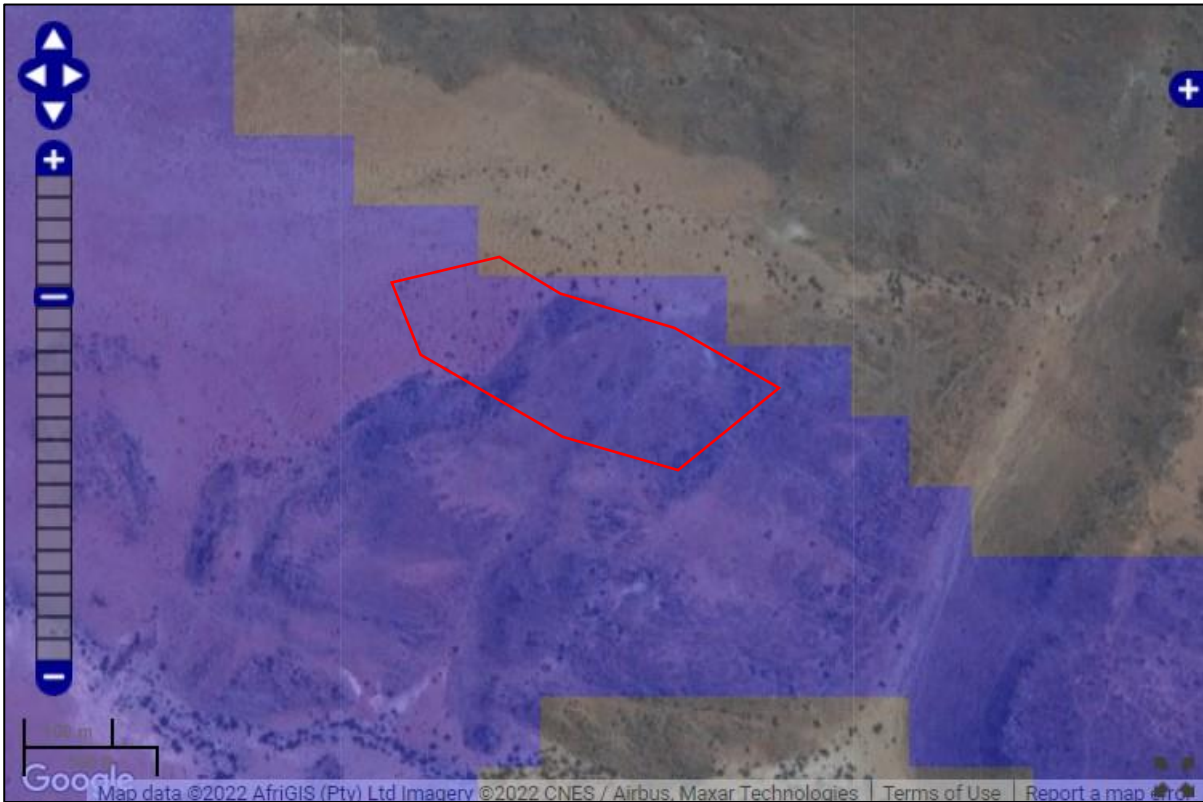
NID supporting document: proposed dolerite quarry on Remainder of Rhenosterkop 155, Beaufort West



Extract from 1:50 000 mapsheet 3222BA showing the location of the property (red shaded polygon) and study area (yellow star).



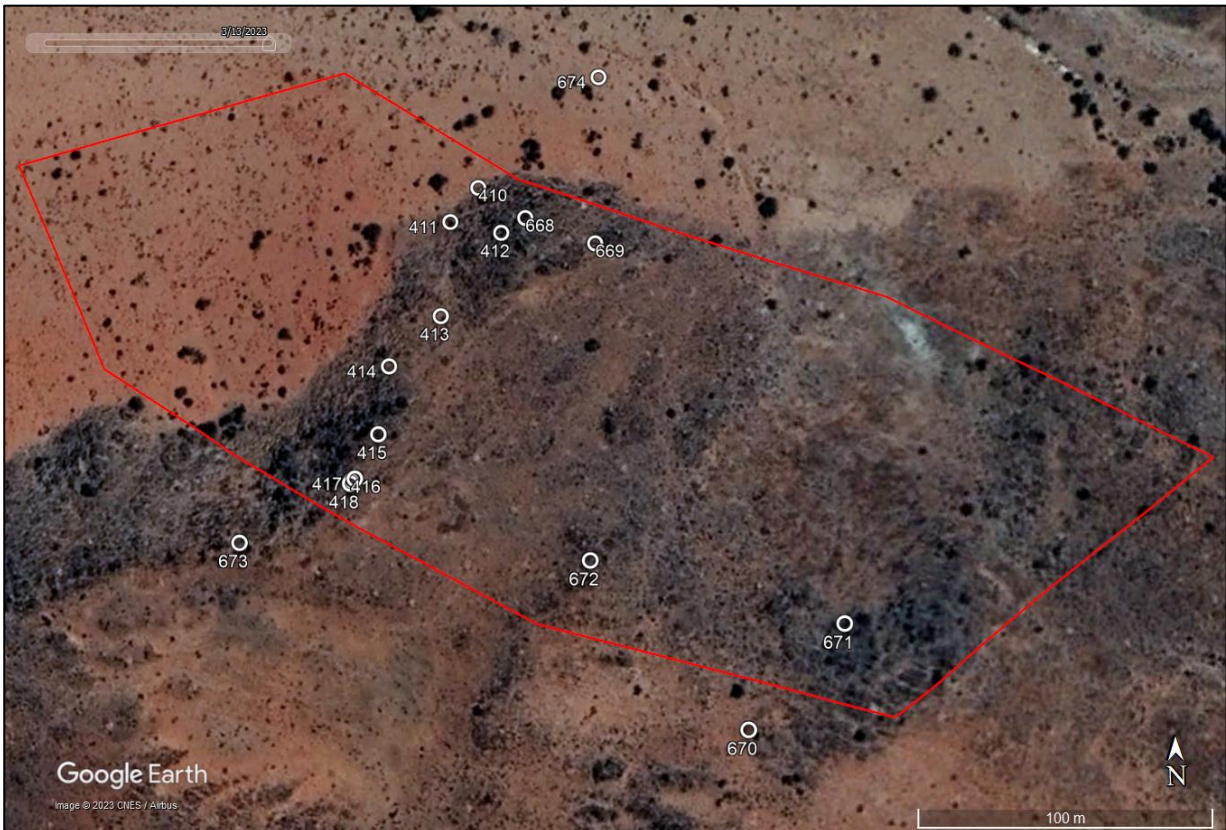
Aerial view showing the farm boundary (red polygon) and location of the study area (yellow star).



Extract from the SAHRIS Palaeosensitivity map showing the study area to be of low palaeontological sensitivity (blue shading). There must be inaccuracy in the mapping because dolerite is unfossiliferous and thus should be of zero sensitivity. The rating is likely correct for the unconsolidated sediments off the dolerite outcrop.



Survey tracks (white lines) with two finds from elsewhere on the farm (white numbered symbols).



Study area with all finds indicated (white numbered symbols).

Site photos (13 March 2023)



Looking south towards the study area in mid-picture. Photo taken from about 90 m away from the northern edge of the study area.



Looking east from the western edge of the study area. This is on the sandy plain at the foot of the dolerite outcrop.



Looking west from the edge of the dolerite over the western, sandy portion of the study area and showing the access track leading to the site.



Looking west from the eastern end of the study area.



Looking northeast towards the study area showing the landscape context. Photograph taken from about 110 m south of the southern edge of the study area.



Looking southwest through the southern part of the study area showing dolerite outcrops.



Looking west across an area of exposed dolerite bedrock in the central eastern part of the study area.




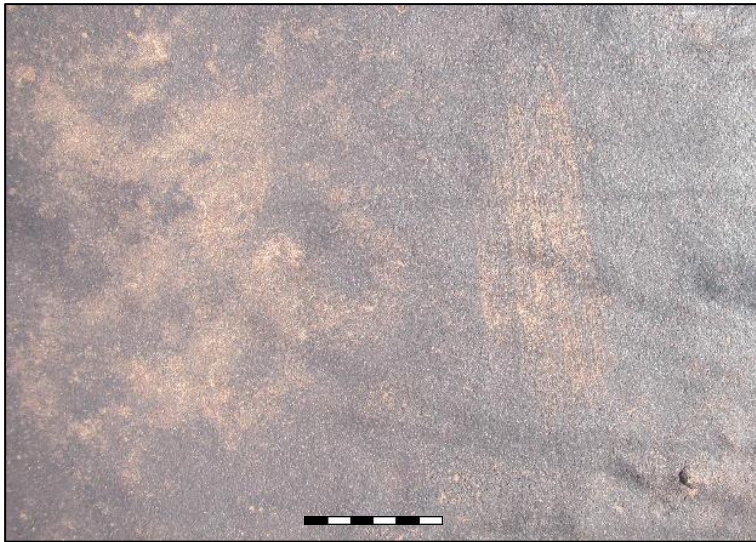
Looking northwest along the access track leading to the study area.



Looking northwest along the access track leading beneath two sets of high voltage powerlines to the study area.

Finds

Waypoint	Location	Description	Significance Grade
668	S32 14 25.2 E22 52 53.4	Dolerite rock with some pecked marks on it. The pecked patch is about 10x15 cm. 	Very low NCW
669	S32 14 25.5 E22 52 54.4	A dolerite rock with a scratched area and a second rock with a smoothed/ground patch alongside a scratched area. Photograph scales in cm.	Low IIIC

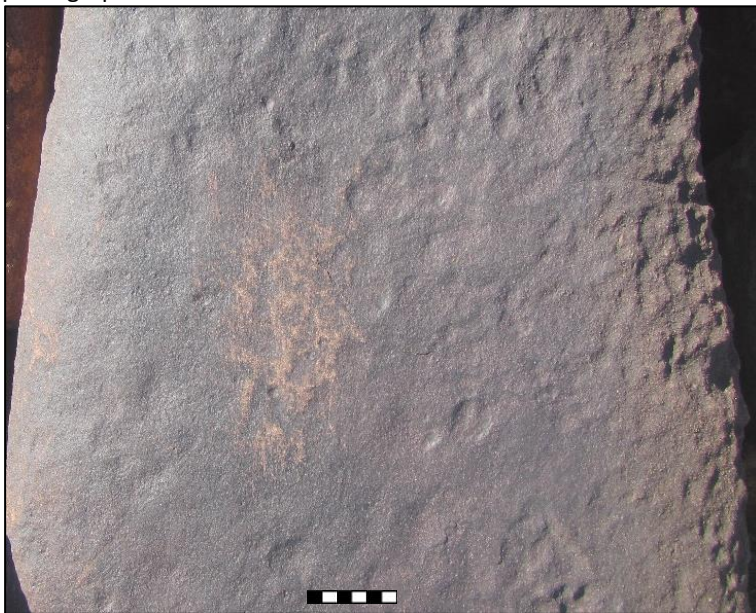



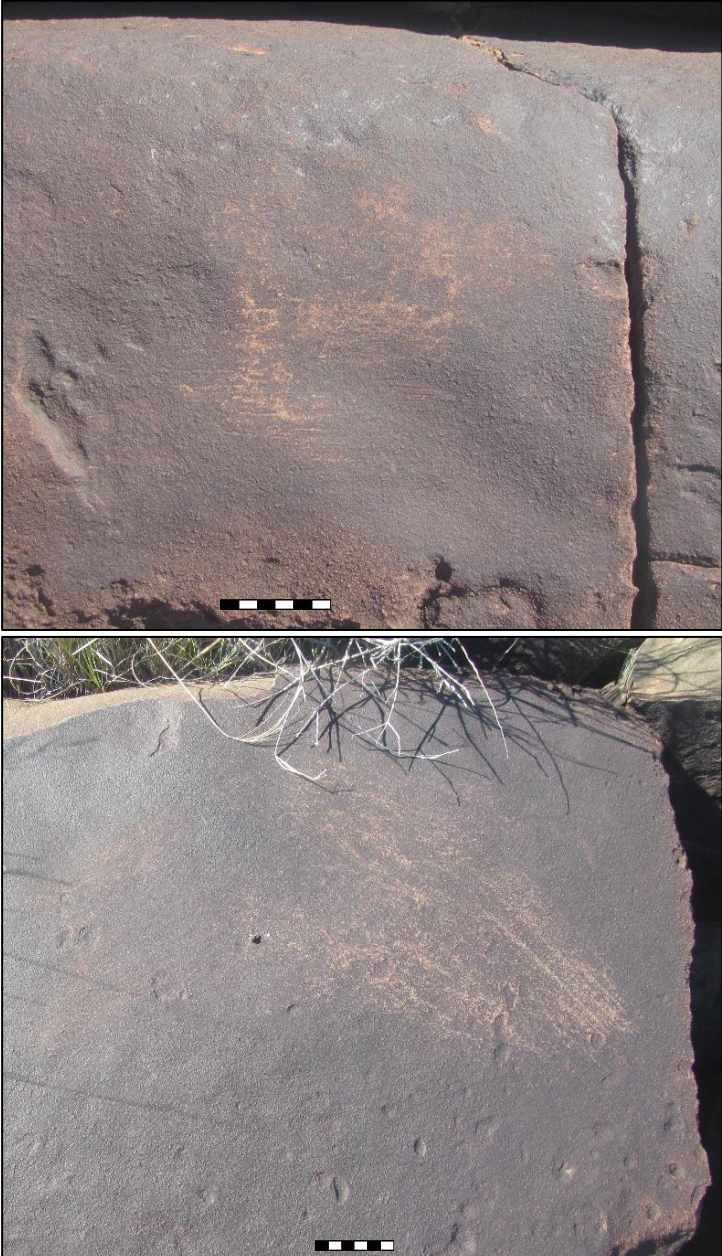
670



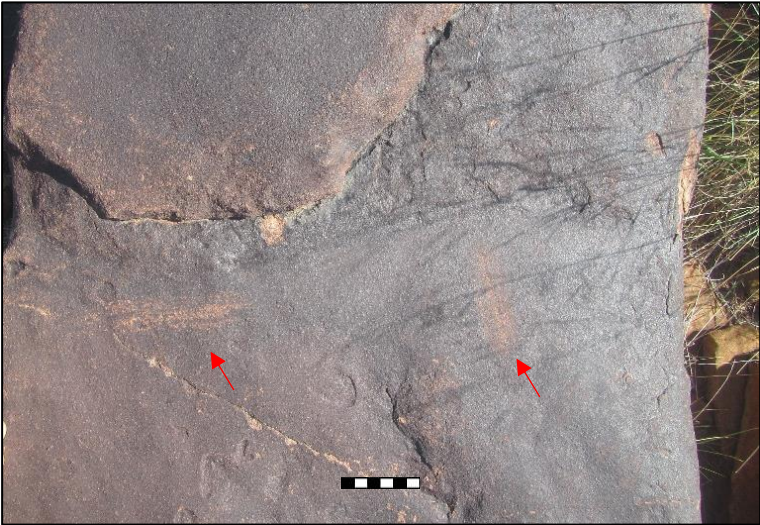
S32 14 31.0
E22 52 56.3

A dolerite rock with a scratched and smoothed area. The scratches are patinated and thus much older than the rubbed area. Main photograph scale in cm. Zoomed in section is about 7 cm wide.

Low
III C



			
671	S32 14 29.8 E22 52 57.6	<p>Two dolerite rocks with scratched and/or rubbed patches. One of them (the upper photograph below) seems to have older, patinated scratches below the more recent rubbing. The third photograph shows the context of these rocks. Photograph scales in cm.</p> 	Low IIC

			
672	S32 14 29.1 E22 52 54.2	<p>A dolerite rock with some unpatinated scratched and/or rubbed patches. Photograph scale in cm.</p> 	Very low NCW
673	S32 14 28.8 E22 52 49.5	<p>A dolerite rock with two small relatively unpatinated scratched/rubbed patches. Photograph scale in cm. The larger cracked slab in the second photograph is about 1 m across. The third photograph shows the context of these rocks. Photograph scale in cm.</p> 	Very low NCW



674

S32 14 23.5
E22 52 54.5

A lightly used upper grindstone and a tuff core located on the flat sandy area below the dolerite outcrop and just outside the study area. Photograph scale in cm.

Very low
NCW



675

S32 14 24.1
E22 52 07.8

We were taken to this site by the farmer's wife. She mentioned that elsewhere there is an engraving of an elephant but was not sure of the exact location. These sites, and the LSA scatter below) are well away from the proposed quarry but are listed here for the record. A dolerite outcrop with several engravings on it. The main slab has a few eland with one of them having a fat line extending from its nose (bleeding? rain?). There is also a stylised Nine Men's Morris gameboard (it has six concentric squares rather than three and is on

High
IIIA




an angled section of rock so it could not have been used to play the game). The name "M. Grimbeek" and a date of 1915 appears in one place and in another is "Matt Grimbeek" with a date of 1916 or 1918. There are also many other recent scratches, including some lettering and a large geometric design. A second rock nearby has a single eland on a near-vertical face.



676

S32 13 05.3
E22 51 39.6

Extensive LSA scatter along the bank of a river. There are many flaked stone artefacts, some grindstones, plenty of pottery, some ostrich

		<p>eggshell and some bones (some burnt). Artefacts have been collected from this site in the past (grindstones, bored stones). Apparently there is a large amount of archaeology along the margins of this river.</p> 	
677	S32 13 04.3 E22 51 10.4	<p>The main farmhouse which looks to date from the early 20th century, perhaps between 1910 and 1930. It is located well away from the proposed quarry.</p> 	High IIIA
410	S32 14 24.8 E22 52 52.8	<p>A dolerite rock with some light peck marks on it. Photograph scale in 1 and 5 cm intervals.</p> 	Very low NCW
411	S32 14 25.2 E22 52 52.4	<p>Three dolerite rocks with scraping, scratching and rubbing on them. One has scrapes that seem to make an indeterminate motif of sorts. Photograph scales in 1 and 5 cm intervals.</p>	



412

S32 14 25.3
E22 52 53.1

A dolerite rock with parallel lines scratched on it. Photograph scale in 1 and 5 cm intervals.



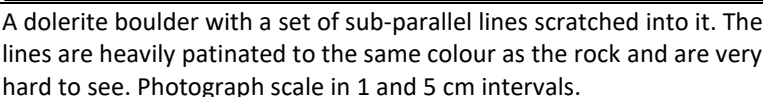
413

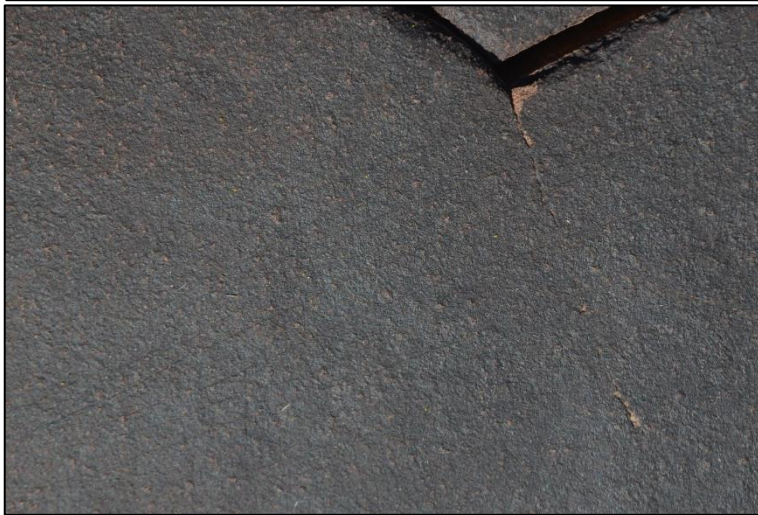
S32 14 26.3
E22 52 52.2

A dolerite rock with a scratched and rubbed area. Photograph scale in 1 and 5 cm intervals.



414	S32 14 26.8 E22 52 51.5	A dolerite rock with some short, heavy scratches on it. Photograph scale in 1 and 5 cm intervals.	
415	S32 14 27.6 E22 52 51.4	A dolerite rock with some scratches on it. There are two phases of scratching with the earlier being heavily patinated and barely visible (they do not show up in the photograph). The fresher scratches are between the two arrows. Photograph scale in 1 and 5 cm intervals.	
416	S32 14 28.2 E22 52 51.0	A dolerite rock with a smoothed/ground patch. Also some small scratches. Photograph scale in 1 and 5 cm intervals.	
417	S32 14 28.1 E22 52 51.1	A dolerite boulder with a set of sub-parallel lines scratched into it. The lines are heavily patinated to the same colour as the rock and are very hard to see. Photograph scale in 1 and 5 cm intervals.	





418

S32 14 28.2
E22 52 51.0

A dolerite rock with a smoothed/ground patch. Photograph scale in 1 and 5 cm intervals.

