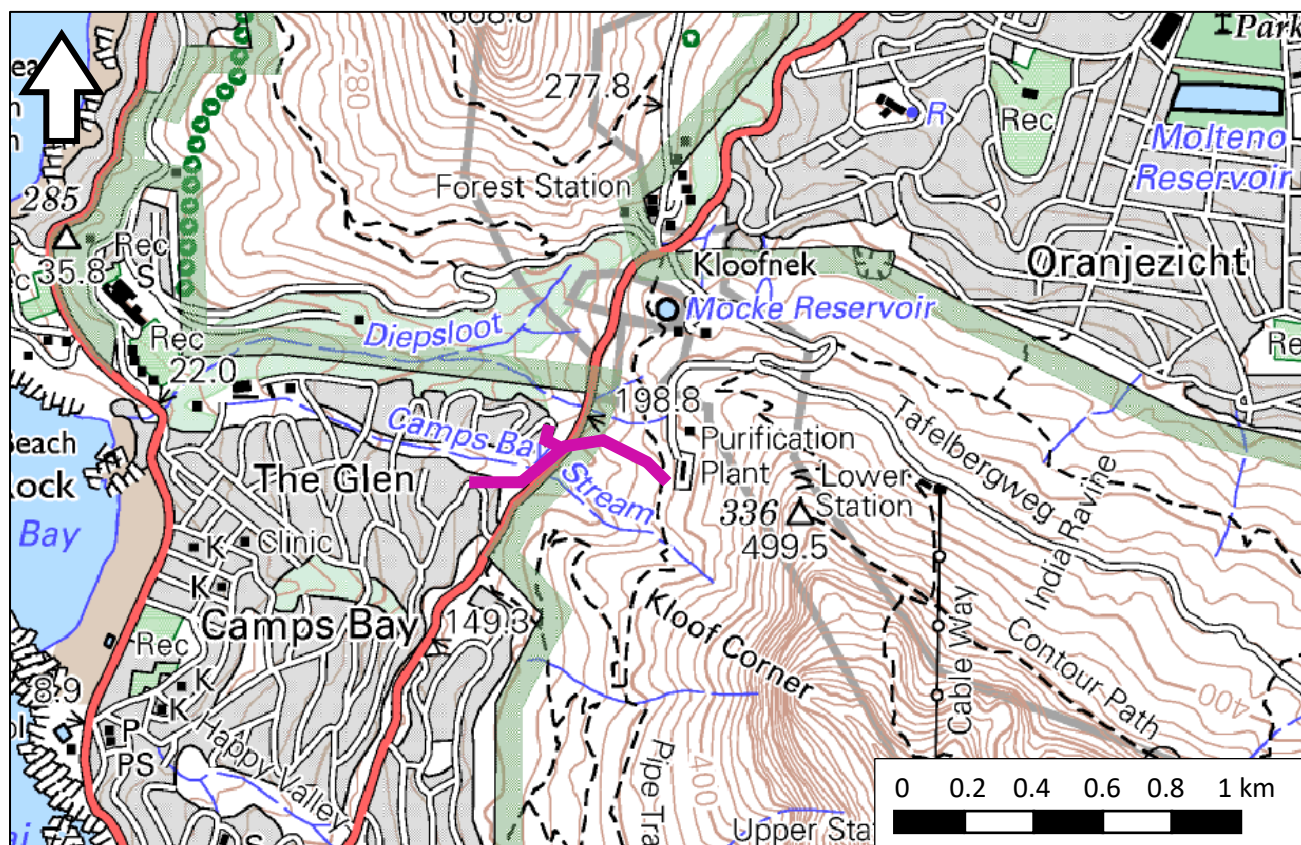
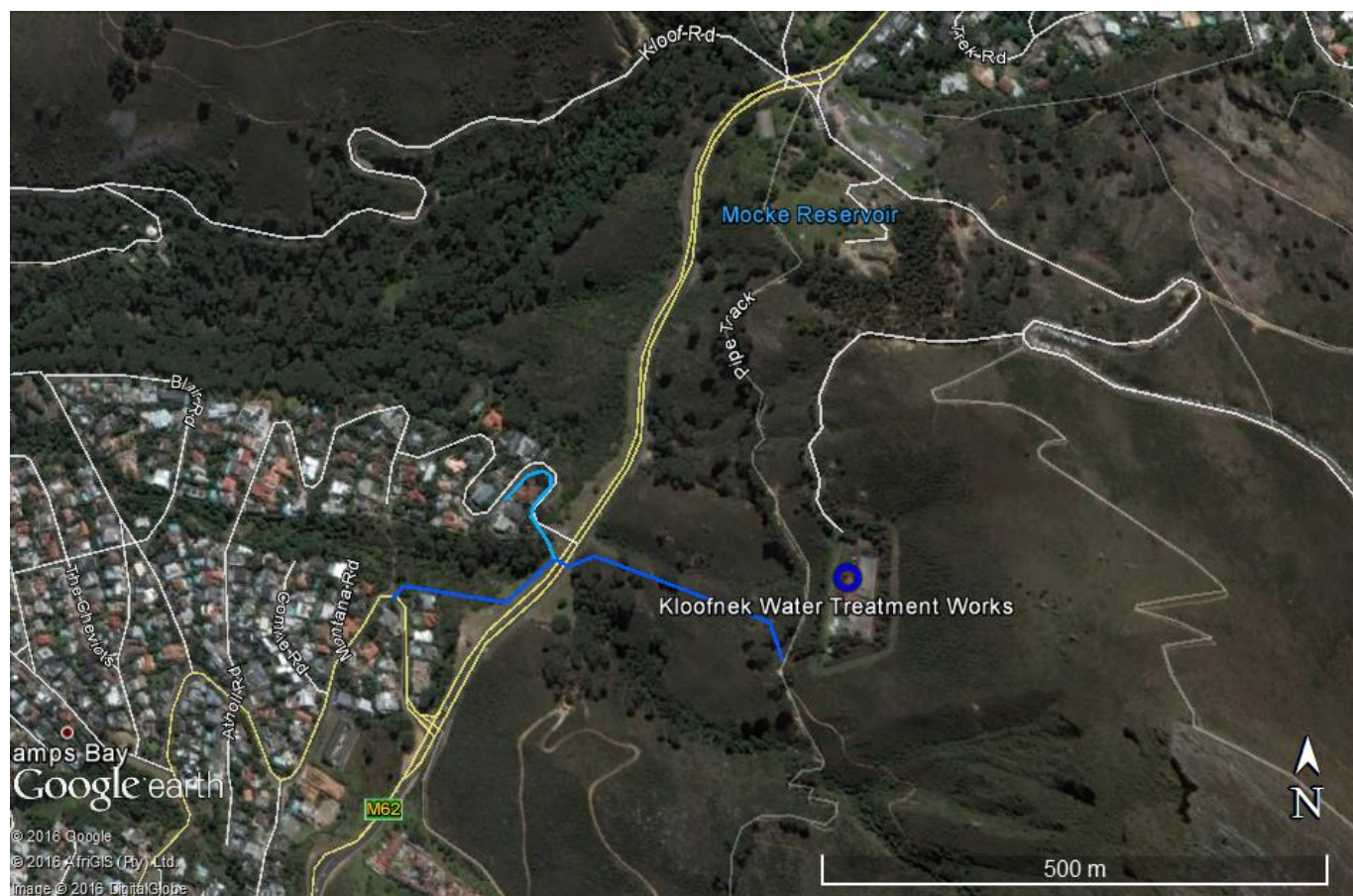


NID supporting document: Kloof Nek WTP sludge disposal pipeline



Extract from 1:50 000 mapsheet 3318CD showing the location of the proposed pipeline (purple line).



Local context of the study area. The Kloof Nek Water Treatment Plant is indicated in mid-picture.



Extract from the SAHRIS Palaeosensitivity map showing the pipeline route alternatives (pink lines) to be of zero (grey) and low (blue) palaeontological sensitivity.



Aerial view of the site showing the existing route for sludge disposal (brown line), the proposed new pipeline (pink line), the proposed sludge storage tank (red square) and the walk-paths created during the ground survey (yellow lines).

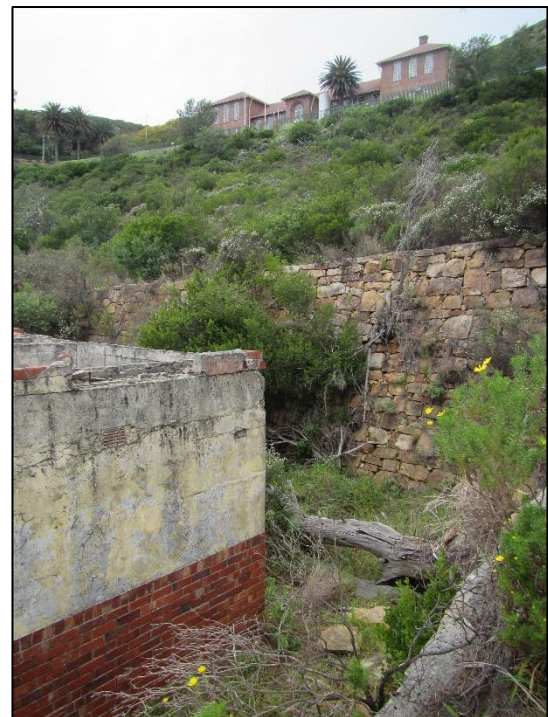
Site photographs



View from WTP towards Camps Bay showing the approximate alignment of the route (purple line). The ruin site is marked by the white arrow.



View of the ruin from above.



View of retaining wall behind ruin.



View of the ruin from the front (west) with the WTP in the background.



View up the slope with figure walking along the approximate alignment of the proposed pipeline. The Kramat lies out of view to the right. The site is covered by fynbos with scattered Stone Pines.



View of kramat from northeast.



View of kramat in trees from southwest (arrowed).