

# Eco-Con Environmental - Proposed Agricultural Development, Douglas, Northern Cape Province

## Sensitivity Map: Agricultural Development

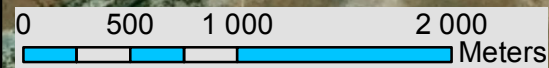
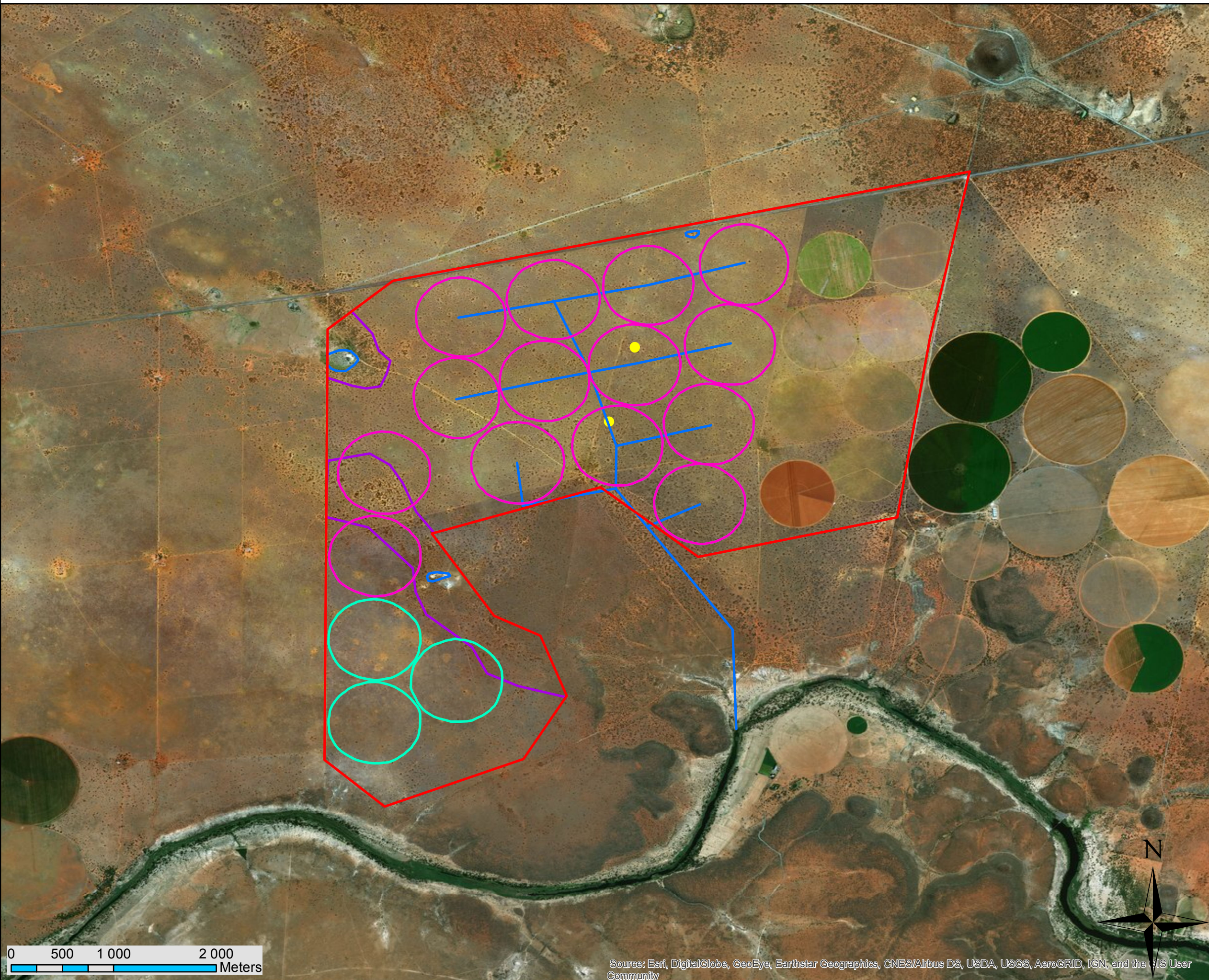
### Legend

- Zulani assessment footprint
- Zulani Alternative 2 footprint..
- Further additional footprint Alternative 1
- Pipeline route
- Water bodies
- Increase in woody density
- Vulture nests

DATUM: WGS 84  
 PROJECTION: GEOGRAPHIC  
 DATE: MAY 2018  
 SCALE: 1: 40 000

Prepared by:   
**EcoFocus**  
 Ecological Specialist Services  
*Leave a future behind*

Prepared for:   
**ECO-CON**  
 ENVIRONMENTAL  
 BECAUSE A GOOD PLANET IS HARD TO FIND



Source: Esri, DigitalGlobe, GeoEye, Earthstar Geographics, CNES/Airbus DS, USDA, USGS, AeroGRID, IGN, and the GIS User Community

