

REF: 405HIA

12 July 2019

Att: Mr Andrew Salomon

Archaeological Heritage Impact Assessor
South African Heritage Resources Agency
PO Box 4637
Cape Town
8000

By email: asalomon@sahra.org.za

Dear Mr Salomon,

REQUEST FOR EXEMPTION FROM A HERITAGE IMPACT STUDY: DEVELOPMENT OF THE LUCKY FARMS 11KV OVERHEAD POWER LINE (OHL), WESTONARIA, GAUTENG

1. Introduction

This letter constitutes a notification of intention to construct a 11kV Overhead Power Line (OHL), near Westonaria, Gauteng Province. The length of the OHL triggers s38(1)(a) of the National Heritage Resources Act (25 of 1999), that requires that the South African National Heritage Resources Authority (SAHRA) is informed of the proposed development.

PGS Heritage has been contacted to evaluate the possible heritage impacts by the proposed OHL and determine if a heritage impact assessment will be required.

2. Project description

Lucky Farms is proposing the construction of a 3,8km OHL to connect their current farming operations with the Bekkersdal Substation. The aim of the project is to supply their farming operation with reliable electricity from Eskom as oppose to the current intermitted supply from the local municipality. 1.6km of the line will be inside the current farm property with the remaining 2.2km traversing open grass land.

3. Description of the receiving environment

The study area is situated in a rural setting characterised. By farming activities such as grazing and irrigate large scale vegetable cultivation (**Figure 1**) The study are is located between the town of Westonaria and Bekkersdal (**Figure 2**).

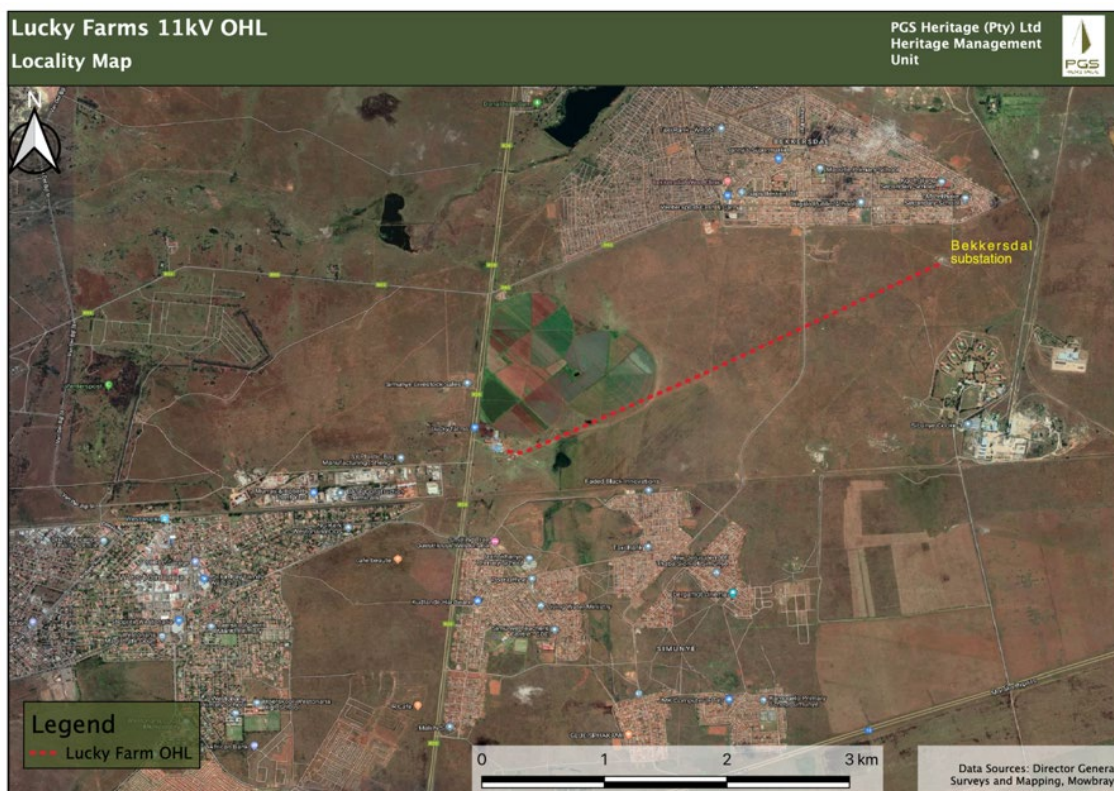


Figure 1 – Locality of study area

4. Heritage potential

The alignment corridor of the OHL start within the built-up farm compound of the Lucky Farms farmstead from where it continues for approximately 1.6km to the south of their established centre pivot irrigation systems before leaving the farm property (**Figure 4** and **Figure 5**). The next 1.8km travers transformed open grass land and end at the Bekkersdal substation (**Figure 6** and **Figure 7**).

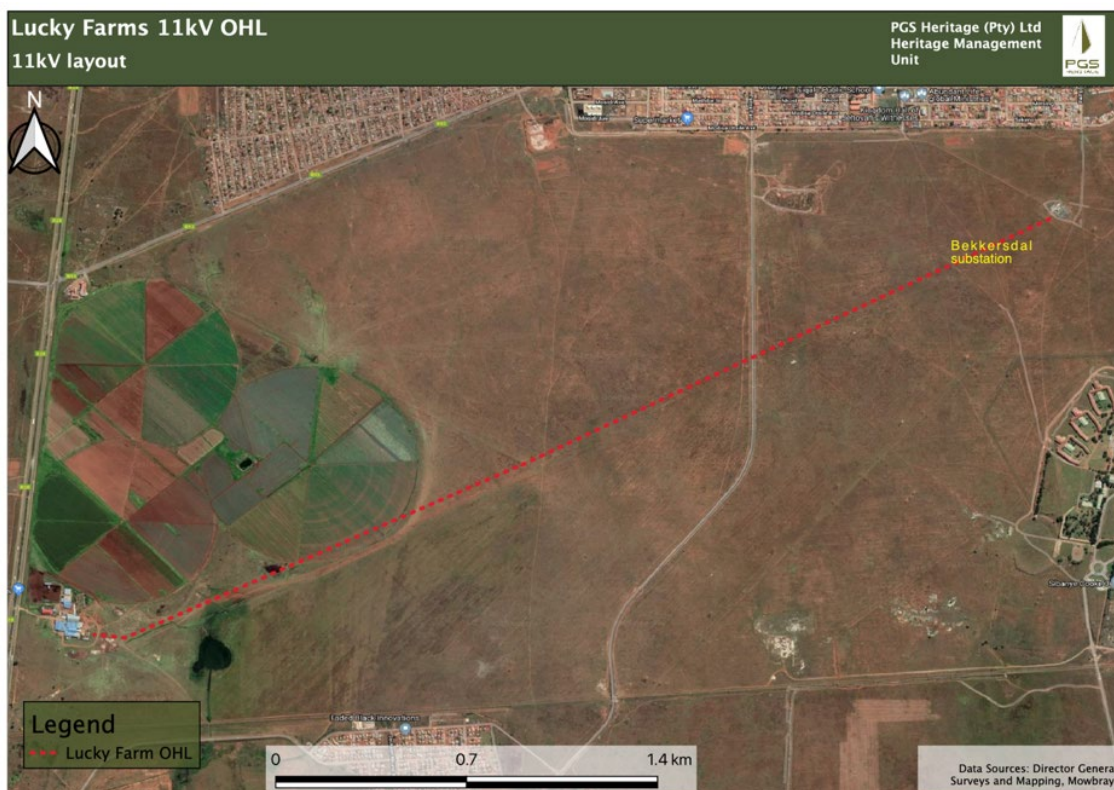


Figure 2 – Alignment of the proposed 11kV OHL

No structure or features were observed in the OHL corridor. Rocky outcrops were investigated that were found to be close to the alignment, but no heritage resources or finds were observed.

No historic, Iron Age or Stone Age heritage sites were noted during the site survey of the OHL alignment on 2 July 2019 (Refer to **Figure 3** for the tracklogs of the field work.)



Figure 3 – Track Logs from the survey undertaken on 2 June 2019



Figure 4 – Alignment along centre pivots on Lucky Farms



Figure 5 – View of alignment from Lucky Farms towards the Bekkersdal substation



Figure 6 – View of alignment towards Lucky Farms from the substation



Figure 7 – Bekkersdal substation


5. Conclusions and Recommendations

With regard to the proposed process, the following recommendations are made:

1. No heritage resources as contemplated in s3 of the NHRA were identified during the fieldwork.
2. Investigation of rock piles from rocks removed from the ploughed fields revealed no archaeological artefacts.
3. It is my considered opinion that no heritage impact assessment of the study area is required as contemplated in s38(3) of the NHRA.
4. The SAHRIS Paleontological database do indicate the area to have a high to very high palaeontological. Sensitivity and the SAHRA must provide clarity on the need for a Palaeontological Impact Assessment.
5. In the unlikely event of any unmarked human burials, burial pits, potsherds or stone tools being uncovered during earthworks for the proposed development, these must be reported immediately to the South African Heritage Resources Agency on 021 362 2535.

Should you have any queries, please contact Wouter Fourie (email: wouter@pgsheritage.com; Tel: (012) 332 5305).

Yours Sincerely

A handwritten signature in black ink, appearing to read 'Wouter Fourie', with a long horizontal stroke extending to the right.

Wouter Fourie

Accredited Professional Archaeologist (ASAPA)/Accredited Professional Heritage Practitioner (APHP)

PGS Heritage (Pty) Ltd