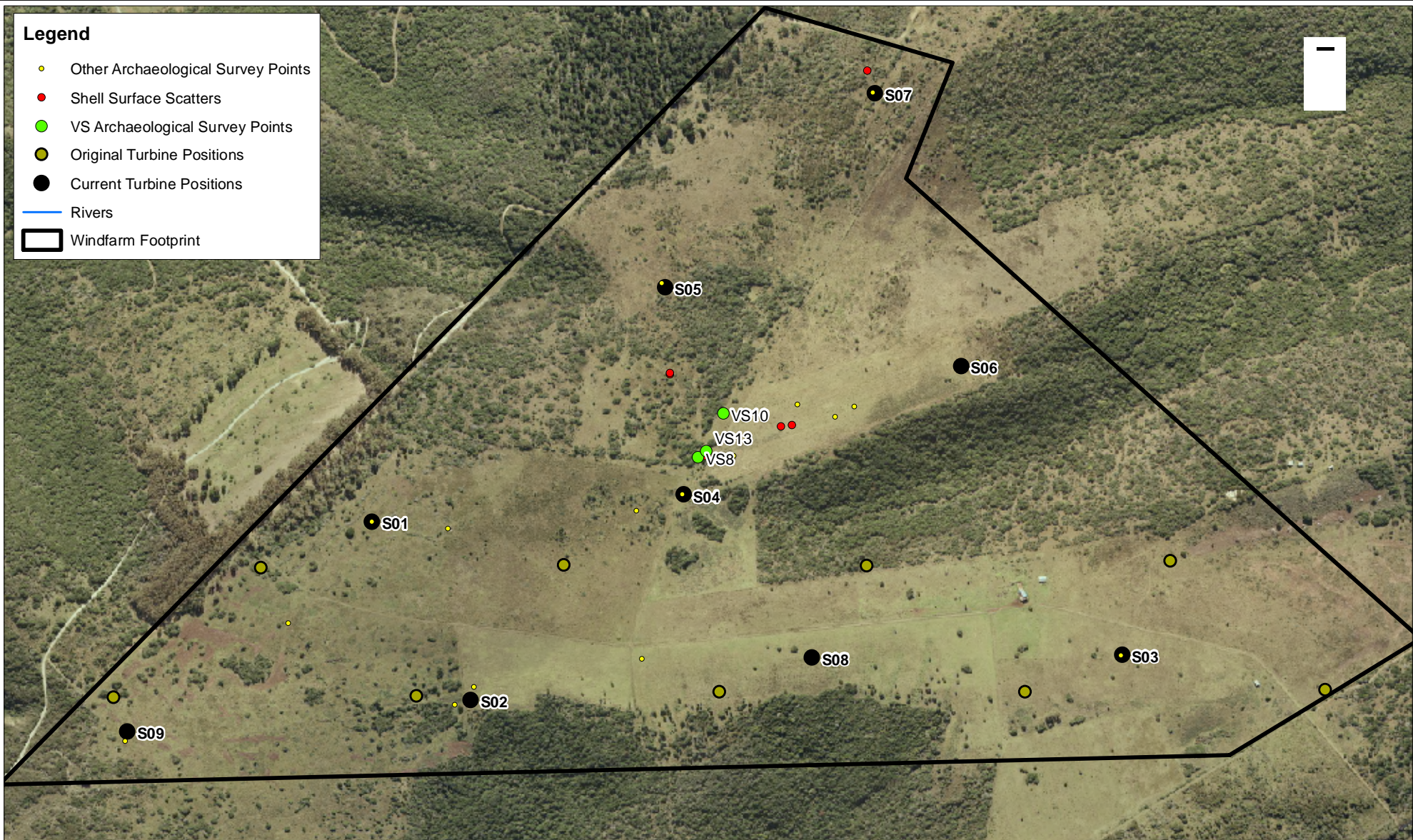


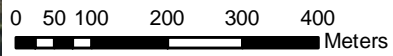
**Legend**

- Other Archaeological Survey Points
- Shell Surface Scatters
- VS Archaeological Survey Points
- Original Turbine Positions
- Current Turbine Positions
- Rivers
- Windfarm Footprint



Shell Surface Scatter in proposed new access road between Turbine 4 (S04) and Turbine 6 (S06) burrowed out by animals; includes fauna, Shell Surface Scatters - between Turbine 5 (S05) and Turbine 4 (S04) & Shell Surface Scatter - adjacent to Turbine 7 (S07)

Point	Description
VS8	A small pile of marine shell scatter dug up by burrowing animals; contains mainly whole Donaxserra (white mussel) remains (Binneman & Booth 2010)
VS10	Located in a relatively open dense grass covered area west of the existing farm road; comprises many churned up mole hills containing mainly Donaxserra remains and occasional quartz stone tool artefacts (Binneman & Booth 2010)
VS13	A relatively large area approximately 20m x 63m in extent; a fragmented marine shell scatter containing mainly Turbo sarmaticus; Scutellastra spp. And Cymbula spp. (Binneman & Booth 2010)



**Metrowind - Van Stadens Windfarm  
Archaeological Survey Points**

Scale:	1:10,000	A4
Projection:	TM	Datum: HBH94
Central Meridian/Zone:	LO25	
Date:	21/06/2012	Compiled by: VERJ
Project No:	436580	Fig No: 001