

ENVIRONMENTAL AUTHORISATIONS FOR THE PROPOSED NEW TAILINGS STORAGE FACILITIES (TD8 AND TD9) AND ASSOCIATED INFRASTRUCTURE AT LONMIN'S WESTERN PLATINUM MINE AND EASTERN PLATINUM MINE, NORTHWEST PROVINCE

Stakeholder Engagement Report

Report Prepared for

LONMIN



Report Prepared by

 **srk** consulting

April 2013

Environmental Authorisation for the proposed new Tailings Storage Facilities (TD8 and TD9) and associated infrastructure at Lonmin's Western Platinum and Eastern Platinum Mines, North West Province

Stakeholder Engagement Report

Lonmin

SRK Consulting (South Africa) (Pty) Ltd.

265 Oxford Rd

Illovo 2196

Johannesburg

South Africa

e-mail: johannesburg@srk.co.za

website: www.srk.co.za

Tel: +27 (0) 11 441 1248

Fax: +27 (0) 11 880 8086

SRK Project Number 436739

April 2013

Compiled by:

Elna de Beer

BA (Social Work)

Senior Stakeholder Engagement

Specialist

Peer Reviewed by:

Vassie Maharaj

BSc (Biochemistry, Physiology)

Associate Partner

Principal Consultant

Stakeholder Engagement

Email: edebeer@srk.co.za

Author:

E de Beer

Table of Contents

Disclaimer.....	v
List of Abbreviations.....	vi
1 Background and Introduction	7
2 Approach to stakeholder engagement	8
2.1 Objectives of Stakeholder Engagement	9
3 Location of project	9
4 Identification of Interested and Affected Parties (I&APs)	11
4.1 Identification of landowners/lessees	14
4.2 Identification of District and Local Municipality	14
4.3 Identification of relevant Government Departments	15
5 Stakeholder Engagement during the Scoping Phase	15
5.1 Announcement of the proposed project and opportunity to become involved and invitation to register as I&AP	15
5.2 Obtaining stakeholder comment during project announcement	18
5.2.1 Focus group meetings.....	18
5.3 Announcement of the availability of the Draft Scoping Report for public comment.....	21
5.4 Obtaining stakeholder comment on the Draft Scoping Report	21
5.4.1 Focus group meetings.....	21
5.4.2 Written comments	22
5.5 Announcement of the availability of the Final Scoping Report for public comment.....	22
5.6 Comment and Response Report	22
5.7 Submission of Scoping Report to Authorities	23
6 Stakeholder engagement during the Impact Assessment phase.....	24
7 Environmental Authorisation	24
8 Conclusion.....	24
Annexures	27
Annexure 1: Stakeholder Database.....	28
Annexure 2: Project Announcement: BID, Letter, I&AP registration and comment sheet.....	29
Annexure 3: Flyers: Setswana and Xhosa.....	30
Annexure 4: Project Announcement: Public Places.....	31
Annexure 5: Project Announcement: Site notices.....	32
Annexure 6: Project Announcement: Advertisements	33
Annexure 7: Project Announcement: Focus Group Meetings	34
Annexure 8: DSR: Letter announcing availability.....	35
Annexure 9: DSR: Advertisements.....	36

Annexure 10: DSR: Public Places 37
Annexure 11: DSR: Focus Group Meetings..... 38
Annexure 12: FSR: Letter announcing availability 39
Annexure 13: Scoping Phase: Written Comments..... 40
Annexure 14: Comment and Response Report..... 41

List of Tables

Table 1 Project area by land portions	14
Table 2 Contact details of District and Local Municipality	14
Table 3 Identification of relevant Government Departments	15
Table 4 Distribution of Project documentation	16
Table 5 Public places where project announcement documentation were made available	16
Table 6 Advertisements published to announce the proposed project and invite stakeholders to register as I&AP	17
Table 7 Details of focus group meetings with key stakeholders during project announcement.....	18
Table 8 Details of focus group meetings to discuss the Draft Scoping Report	21
Table 9 Summary of stakeholder comments and issues.....	22
Table 10 Submission of Scoping Report to Authorities	23

List of Figures

Figure 1 Environmental Authorisation and associated stakeholder engagement processes.....	8
Figure 2 Regional setting of the proposed Lonmin project showing existing operations and components of the proposed project in relation to nearest communities	10
Figure 3 Spectrum of stakeholders on the proposed Lonmin Project database	12
Figure 4 Map showing municipal and ward boundaries in relation to the proposed Lonmin project	13
Figure 5 Pictures of the focus group meetings held during the announcement period of the proposed project	19
Figure 6 Map showing site notices and public places where the proposed project was announced	20

Disclaimer

The opinions expressed in this Report have been based on the information supplied to SRK Consulting (South Africa) (Pty) Ltd (SRK) by Lonmin. The opinions in this Report are provided in response to a specific request from Lonmin to do so. SRK has exercised all due care in reviewing the supplied information. Whilst SRK has compared key supplied data with expected values, the accuracy of the results and conclusions from the review are entirely reliant on the accuracy and completeness of the supplied data. SRK does not accept responsibility for any errors or omissions in the supplied information and does not accept any consequential liability arising from commercial decisions or actions resulting from them. Opinions presented in this report apply to the site conditions and features as they existed at the time of SRK's investigations, and those reasonably foreseeable. These opinions do not necessarily apply to conditions and features that may arise after the date of this Report, about which SRK had no prior knowledge nor had the opportunity to evaluate.

List of Abbreviations

BID	Background Information Document
CRR	Comment and Response Report
DEDECT	Department of Economic Development, Environment, Conservation and Tourism
DMR	Department of Mineral Resources
DSR	Draft Scoping Report
DWA	Department of Water Affairs
EAP	Environmental Assessment Practitioner
EIA	Environmental Impact Assessment
EMP	Environmental Management Programme
EMPR	Environmental Management Programme Report
FSR	Final Scoping Report
I&AP	Interested and Affected Party
IDP	Integrated Development Plan
IWULA	Integrated Water Use License Application
Lonmin	Lonmin Platinum Mine
MPRDA	Mineral and Petroleum Resources Development Act
NEMA	National Environmental Management Act (Act No. 107 of 1998)
NWA	National Water Act (Act No. 36 of 1998)
WULA	Water Use License Application

1 Background and Introduction

Lonmin Platinum Mine's (Lonmin) Western Platinum Limited (WPL) and Eastern Platinum Limited (EPL) operations are located near Marikana in the North West Province. As a result of limited storage capacity at the central area operations, Lonmin proposes to construct two new tailings dams in order to ensure that adequate storage is available for life of mine within the central area. This will also include the construction of associated infrastructure such as pipelines, pump stations, service roads and the upgrade and extension of the current return water dam.

Lonmin has an approved Environmental Management Programme (EMP) as required by the Mineral and Petroleum Resources Development Act (Act No 28 of 2002) (MPRDA) for both WPL and EPL. Before Lonmin can commence with the proposed project, the following environmental authorisation applications need to be undertaken:

- An Environmental Impact Assessment (EIA) in terms of the National Environmental Management Act (Act No. 107 of 1998) (NEMA), Regulations 544, 545 and 546 (Government Gazette 33306, 18 June 2010);
- An EMP Amendment in terms of the MPRDA and
- An Integrated Water Use License (IWUL) Amendment - in terms of the National Water Act (Act No. 36 of 1998) (NWA).

The stakeholder engagement process as part of the environmental authorisation process is conducted in terms of NEMA (as amended) which provides clear guidelines for stakeholder engagement during and EIA. Chapter 1 of the NEMA outlines the principles of environmental management, several pertaining to public consultation (e.g. Chapter 1, subsections (2), (3), (4)(f), (g), (h), (k), (q) and (r). The amended EIA Regulations promulgated in June 2010 in GN R543, Chapter 6, section 54-57 specify the minimum requirements for stakeholder engagement in an EIA under the NEMA. In October 2012, The Minister of Water and Environmental Affairs published in terms of section 24J of the NEMA, Public Participation Guidelines which guide the public participation process and specify minimum requirements.

The stakeholder engagement process undertaken is also conducted in terms of the MPRDA. The DMR published Guidelines for *Consultation with Communities and Interested and Affected* as required in terms of section 10(1)(b), 16(4)(b), 22(4)(b), 27(5)(b) and 39 of the MPRDA.

All the above guidelines have been incorporated into the stakeholder engagement process required by the environmental authorisation applications.

Lonmin appointed SRK Consulting as the independent Environmental Assessment Practitioner to undertake the various environmental authorisations and associated stakeholder engagement process. This application must be submitted to the, Department of Mineral Resources (DMR) North West Regional Office, Department of Economic Development, Environment, Conservation and Tourism (DEDECT) in the North West Province and the Department of Water Affairs (DWA) for authorisation. Commenting authorities include the Bojanala District Municipality and Madibeng Local Municipality.

This document represents the Stakeholder Engagement Report of the Scoping Phase for Lonmin's proposed TD8 and TD9 Project and outlines the stakeholder engagement undertaken to date, as part of the environmental authorisation process.

2 Approach to stakeholder engagement

Stakeholder Engagement is the involvement of all parties who potentially have an interest in a development or project, or may be directly or indirectly affected by the proposed development. It is a process leading to a joint effort by stakeholders, technical specialists, the authorities and the proponent/developer who work together to produce better decisions than if they had acted independently.

The stakeholder engagement process for the environmental authorisation process is discussed below and the key steps of the process are presented in **Figure 1**. The approach followed is focused on:

- Obtaining most issues, including those from stakeholders early on in the process, with the latter half of the process designed to provide environmental and technical evaluation of these issues;
- Personal contact with directly affected Interested and Affected Parties (I&APs), taking into account cultural and language sensitivity;
- Using the languages of choice of I&APs in meetings, and providing selected documents as per the requirements of the MPRDA, NEMA and NWA;
- Raising a diversity of perspectives and opinions rather than forcing consensus among I&APs. This approach also minimises project risks by building trust with I&APs;
- Building capacity of I&APs to participate; and
- Clarifying I&APs' roles and responsibilities at the start of the process, sanctioned by the authorities, in terms of where and when decision will be made and by whom.

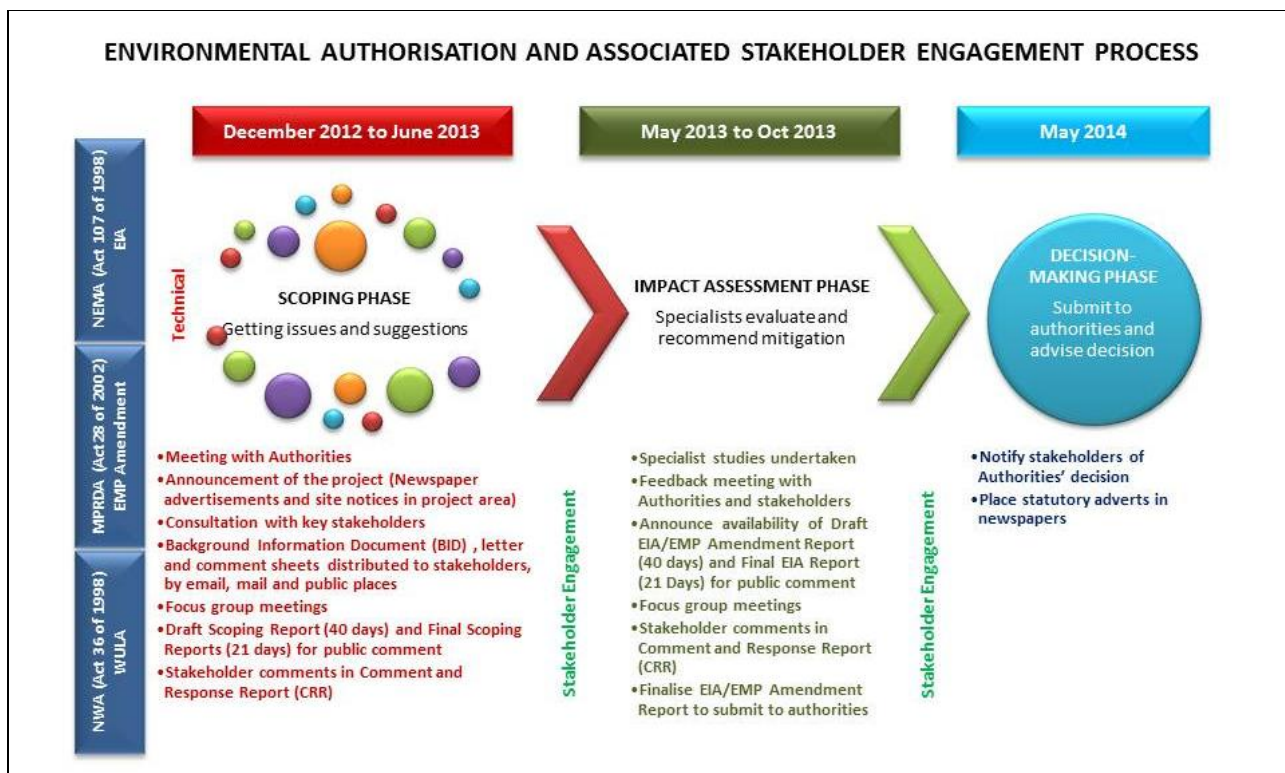


Figure 1 Environmental Authorisation and associated stakeholder engagement processes

2.1 Objectives of Stakeholder Engagement

The stakeholder engagement process is designed to provide sufficient and accessible information to I&APs in an objective manner to assist them to:

During the Scoping Phase

- Raise issues of concern and suggestions for enhanced benefits;
- Verify that their issues have been recorded; and
- Contribute relevant local knowledge and traditional knowledge to the environmental assessment.

During the Impact Assessment/EMP Amendment Phase

- Contribute relevant information and local traditional knowledge to the environmental assessment;
- Verify that their issues have been considered in the environmental assessment; and
- Comment on the findings of the environmental assessment.

During the Decision-making Phase

- Advise I&APs of the outcome, i.e. the authority decision, and how and by when the decision can be appealed.

3 Location of project

The proposed Lonmin Project is situated approximately 4 km South-east of Wonderkop. It falls within the boundaries of the Madibeng Local and the Bojanala District Municipality. The project area is in the vicinity of the Wonderkop Township and the Segwaelane Township:

Figure 2 shows the location of proposed Lonmin TD8 and TD9 Project in relation to the nearest towns, and major roads.

4 Identification of Interested and Affected Parties (I&APs)

The NEMA Regulations (GN R 543) require identification of and consultation with communities and I&APs. In terms of Section 24 0 (2) of NEMA specific State departments were identified and recognised as commenting authorities on aspects of this EIA. Representatives from these departments are included in the stakeholder database.

The SRK stakeholder engagement office started the stakeholder identification process by utilising an existing database linked to existing Lonmin stakeholder engagement processes. Existing stakeholder details were verified and incorporated into the stakeholder database developed for the proposed Lonmin Project.

Communities and I&APs were identified through a process of discussions with Lonmin, meetings with stakeholders, networking and previous relationships developed with key stakeholders.

The NEMA Regulations (GN R543) distinguishes between I&APs and registered I&APs – refer Box 1.

A register of I&APs has been opened and contain the names of all I&APs as defined by the NEMA Regulations and will be updated throughout the process.

In March 2013, during announcement of the project, there were 79 stakeholders on the database.

Figure 3 shows that these stakeholders represent a broad spectrum of sectors of society. The current stakeholder database is attached as **Annexure 1** and will be updated throughout the process.

Box 1. Distinction between I&APs and Registered I&APs

The NEMA Regulations (GN R543) distinguishes between I&APs and registered I&APs.

I&APs, as contemplated in Section 24(4)(d) of the NEMA include: (a) any person, group of persons or organisation interested in or affected by and activity; and (b) any organ of state that may have jurisdiction over any aspect of the activity.

In terms of the Regulations “**registered interested and affected parties**” means:

An interested and affected party whose name is recorded in the register opened for that application.

For that purpose, an EAP managing an application must open and maintain a register which contains the names, contact details and addresses of:

- (a) All persons who; have submitted written comments or attended meetings with the applicant or EAP;
- (b) All persons who; have requested the applicant or EAP managing the application, in writing, for their names to be placed on the register; and
- (c) All organs of state which have jurisdiction in respect of the activity to which the application relates.

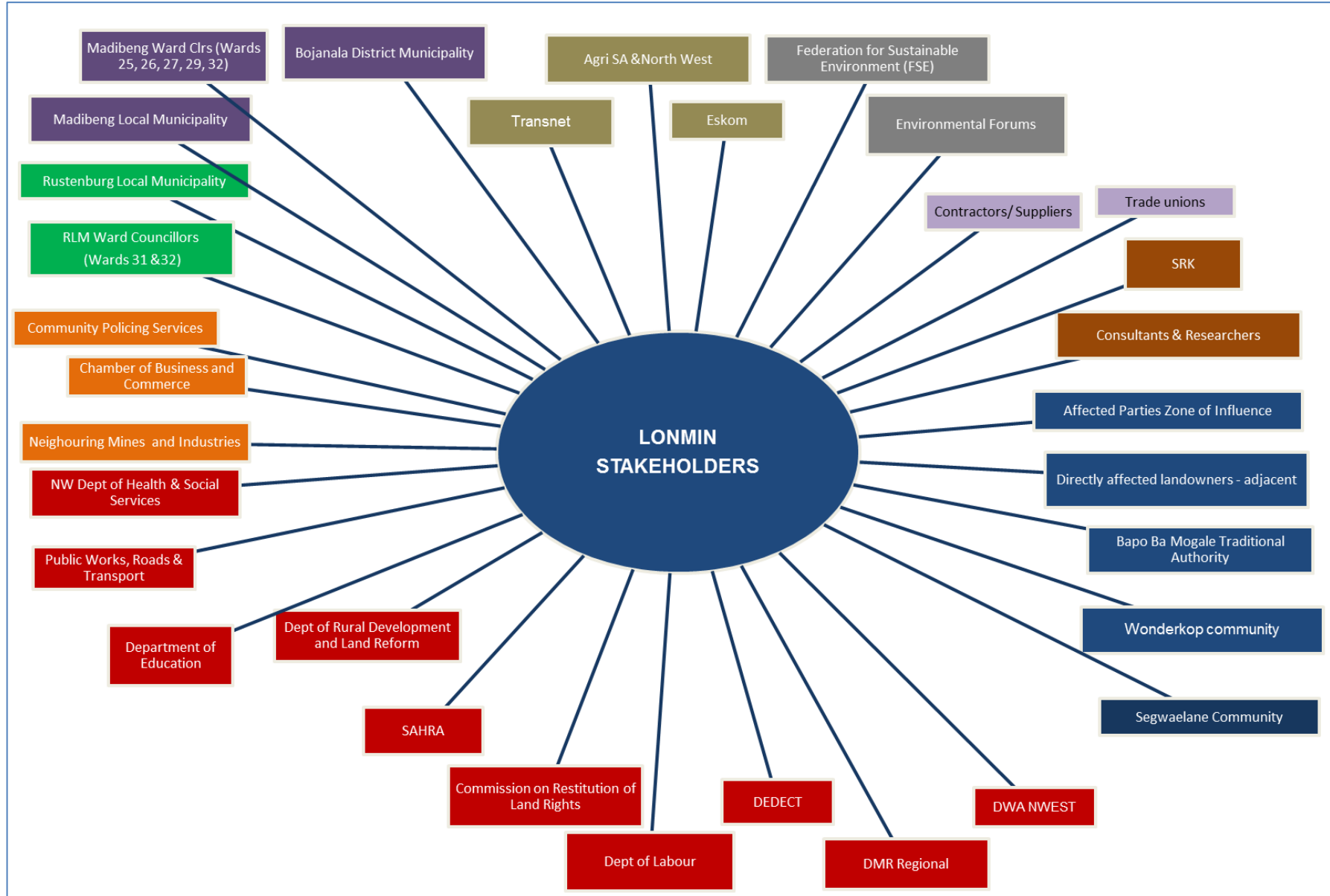


Figure 3 Spectrum of stakeholders on the proposed Lonmin Project database

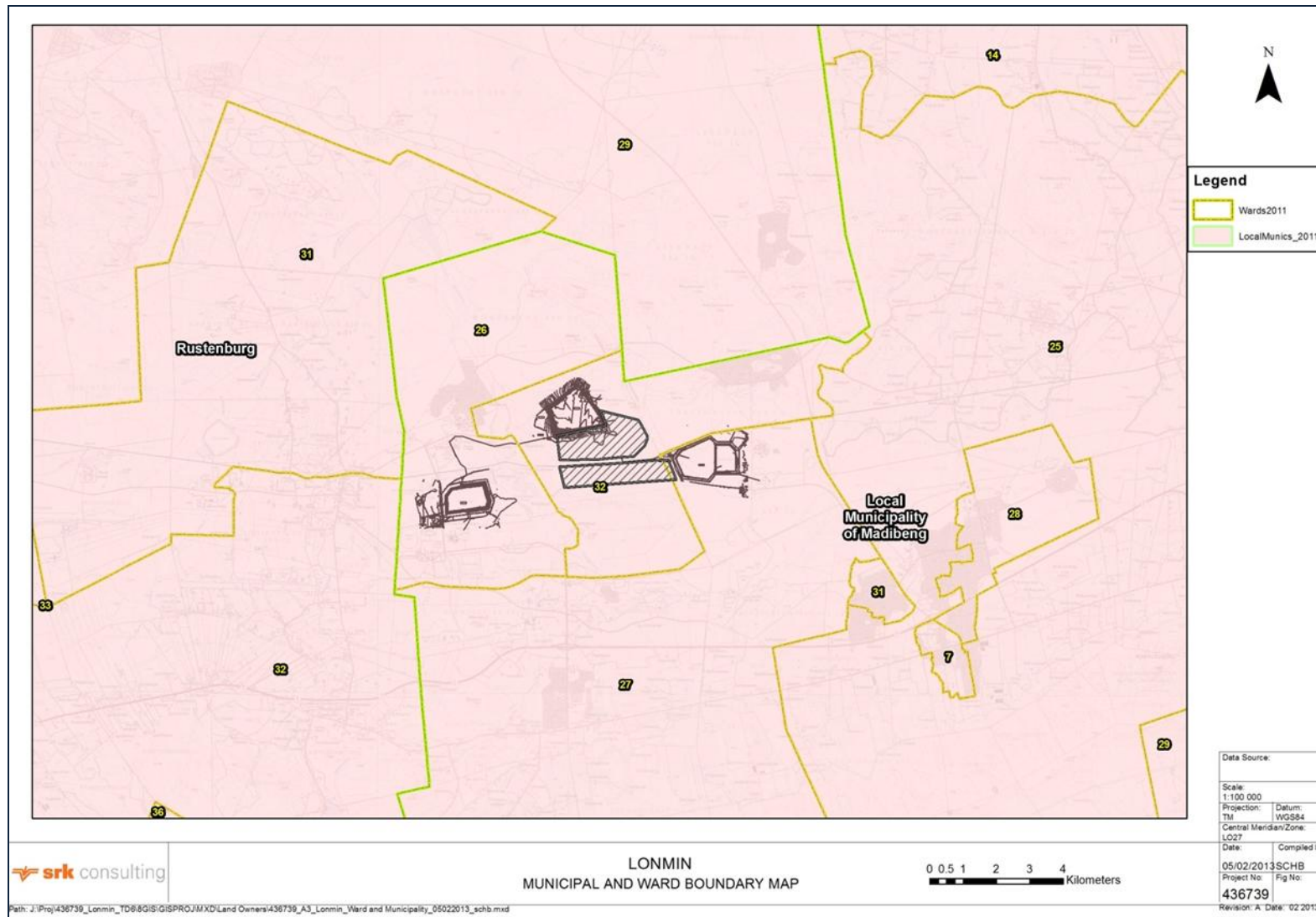


Figure 4 Map showing municipal and ward boundaries in relation to the proposed Lonmin project

4.1 Identification of landowners/lessees

The identification of landowners in the project area is a vital part of the stakeholder engagement process. SRK Consulting conducted a deeds search to identify landowners/lessees directly related to the project and adjacent to the proposed project area. The area in and around the project area is property owned by WPL, except to the east of the project, which is state land held in trust for the Bapo Ba Mogale tribe. The entire area is however, mining lease area (WPL Mining Right 29/2008MR {ML8/95} and EPL Mining Right 16/2008MR {ML3/96}).

The properties affected by the proposed Lonmin TD8 and TD 9 Project are shown in Table 1.

Table 1 Project area by land portions

Land portions directly affected	Land portions adjacent to the project
Middelkraal 466 JQ RE44	Middelkraal 466 JQ RE56
Middelkraal 466 JQ RE43	Middelkraal 466 JQ RE50
Middelkraal 466 JQ RE63	Middelkraal 466 JQ RE69
Middelkraal 466 JQ RE60	Middelkraal 466 JQ RE45
Middelkraal 466 JQ RE9	Middelkraal 466 JQ RE37
Middelkraal 466 JQ RE51	Middelkraal 466 JQ RE26
Middelkraal 466 JQ RE58	Middelkraal 466 JQ RE24
Middelkraal 466 JQ RE46	Middelkraal 466 JQ RE2
Turffontein 462JQ Portion 3	Turffontein 462JQ Portion 3

The Department of Rural Development and Land Reform confirmed in writing that land claims were lodged on the above properties but were rejected on the basis that they do not meet the requirements of Section 2 of the Restitution of Land Rights Act, Act 22 of 1994. However, in terms of the Promotion of Administrative Justice Act, Act 3 of 2000 and Section 36 of the Restitution of Land Rights Act, Act 22 of 1994 (as Amended) may take the Commission for a review. The letter is attached in full in **Annexure 13** and the content of the letter has been included in the CRR.

4.2 Identification of District and Local Municipality

The project area falls within the jurisdiction of the Bojanala District Municipality and the Madibeng Local Municipality in the North West Province.

The map in **Figure 4** shows the demarcation of the respective wards of the Madibeng Local Municipality relevant to this project. It also shows Wards 31 and 32 of the Rustenburg Local Municipality immediately adjacent to the project area.

The demarcation of the Contact details of the District and Local Municipality are shown in **Table 2**.

Table 2 Contact details of District and Local Municipality

Municipality	Contact Person	Contact Details
Bojanala District Municipality	A Bubu	014 590 4500 / amandab@bojanala.gov.za

Municipality	Contact Person	Contact Details
Madibeng Local Municipality	M Juta	012 318 9500 / munman@madibeng.gov.za
Madibeng: Ward 7	Cllr. L Mnkhoma	072 520 6110
Madibeng: Ward 25	Cllr. I Padi	083 745-9433
Madibeng: Ward 26	Cllr. N Mponwana	073 003-9314
Madibeng: Ward 27	Cllr. M Ngetho	073 159-1400
Madibeng: Ward 28	Cllr. G Betha	074 617 2592
Madibeng: Ward 31	Cllr. P Makgabo	082 338 0621
Madibeng: Ward 32	Cllr. Priscilla Mamogwe	073 336 9658
Rustenburg Local Municipality	Mr Tshepo Lenake	014 590 3433 / tlenake@rustenburg.gov.za
Rustenburg: Ward 31	Cllr. R K Motlhasedi	072 134 8964
Rustenburg: Ward 32	Cllr Appreciate Ndlovu	081 862 1608

4.3 Identification of relevant Government Departments

Environmental authorisation for the proposed Lonmin Project is required from the DEDECT, DMR and the DWA. The contact details of these departments and the relevant commenting authorities are provided in **Table 4** below.

Table 3 Identification of relevant Government Departments

Department	Contact Person	Contact Details
DEDECT	Delta Mahlaku	014-597-3597
DMR	Desmond Makamu	018-487-9830
DWA	Chadwick Lobakeng	018 387 9500

5 Stakeholder Engagement during the Scoping Phase

5.1 Announcement of the proposed project and opportunity to become involved and invitation to register as I&AP

The opportunity to participate in the proposed Lonmin project and to register as an I&AP was announced on 14 March 2013 as follows:

Background Information Document, letter of invitation to register as an I&AP

- Distribution of a letter of invitation dated 14 March 2013 (in English, Afrikaans, Setswana and Xhosa) to become involved in and to register as I&AP, personally addressed to 79 stakeholders, accompanied by a Background Information Document (BID) and registration and comment sheet in English, Afrikaans, Setswana or Xhosa. The BID was emailed to everyone on the database with email addresses. Copies of the BID, letter announcing the proposed project and registration and comment sheet are included in **Annexure 2**.
- The quantity of project announcement documentation and the method of distribution are reflected in **Table 5**.
- Flyers in Setswana and Xhosa announcing the proposed project were distributed through Lonmin's internal newsletter called the GLC Voice. One thousand six hundred (1600) flyers were distributed to sixty two (62) places throughout the project area. Copies of the flyers and the distribution list are included in **Annexure 3**.
- Posting all documentation on the SRK website.

Table 4 Distribution of Project documentation

BIDS, letter of invitation to become involved and, registration as I&AP and comment sheet	
Distribution	Number of BIDs and other documents distributed
Emailed to stakeholders on the database (English)	59
BIDs, and letters placed in public places (all languages)	300
BIDs and letters distributed during focus groups (all languages)	285
Flyers in GLC Voice announcing the proposed project (Xhosa and Setswana) in 62 public places throughout the project area	1600
Total number of project announcement documentation distributed	2244

Public Places

- Placing 5 copies the invitation letter, BID, registration and comment sheet in English, Xhosa, Setswana and Afrikaans, with an A3 poster to indicate the availability of the announcement documents, at each of the public places in the project area. (See **Table 6**)
- Issue receipts of documents delivered to the public places are included in **Annexure 4**.
- The map in **Figure 6** shows the public places where documents have been placed.

Table 5 Public places where project announcement documentation were made available

Public Place	Locality	Contact	Telephone number
Lonmin Reception	Marikana	Hazel Fiehn	014 571 2182
EPL Hostel	Marikana	David Makhema	014 571 4439
EPL main offices	Marikana	Hanlie Ryan	014 571 2399

Public Place	Locality	Contact	Telephone number
Wonderkop Hostel Offices	Marikana	Patrick Molise	014 571 3348
Lonmin Community Centre	15 Karee Street, Mooinooi	Elize Smith	014 571 4211
Bapo Ba Mogale TA	Marikana	Motlana Mphoreng	014 261 1500 076 750 4501
Marikana Public Library	Marikana	Ms Refilwe Motlhabane	014 572 3611
Madibeng LM	Van Velden Sreet, Madibeng	Mondi Juta	012 318 9500
Madibeng Public Library	Van Velden Sreet, Madibeng	Ms Ina Annandale	012 318 9318
Rustenburg LM	Cnr Beyers Naude & Mandela Str, Rustenburg	Maletsi Mako	014 590 3551
Rustenburg Public Library	Cnr Heystek and Thabo Mbeki, Rustenburg	Mr Pieter Louw	014 590 3295
Bojanala DM	Cnr Beyers Naude and Fatima Bhayat Drive, Rustenburg	Amanda Bubu	014 590 4500

Site notices

- 5 site notices each in English, Afrikaans, Setswana and Xhosa were erected at various locations in the project area and a map with the GPS coordinates and photographs of the site notices erected at various locations in the project area are included in **Figure 6** in this report.
- Copies of the site notices are included in **Annexure 5**.

Advertisements

- Advertisements in English and Afrikaans were published in the main body of 2 newspapers, see details in **Table 6**.
- Copies of the advertisements as published in newspapers are included in **Annexure 6**.

Table 6 Advertisements published to announce the proposed project and invite stakeholders to register as I&AP

Newspaper	Date Published	Size	Language
Rustenburg Herald	14 March 2013	20 X 4	English and Afrikaans
Brits Pos	14 March 2013	20 X 4	Afrikaans

5.2 Obtaining stakeholder comment during project announcement

5.2.1 Focus group meetings

Focus group meetings were held to introduce the project to key stakeholders and to discuss the content of the BID. Key stakeholders such as Bapo Ba Mogale Traditional Authority, Madibeng and Rustenburg Ward Councillors and government officials were invited to attend these meetings. **Table 8** shows details of the focus group meetings held.

The attendance lists and proceedings of these meetings are included in **Annexure 7**. All comments received during these meetings were included in the Comment and Response Report.

Table 7 Details of focus group meetings with key stakeholders during project announcement

Date	Venue	Key stakeholder group
11 March 2013	Bapo Ba Mogale Traditional Authority(BBMTA) Offices, Bapong	Bapo Ba Mogale Traditional Authority Administrator and Project Manager
14 March 2013	Lonmin Community Centre, Mooinooi	Ward Councillors and Madibeng and Rustenburg Local Municipality Officials
15 March 2013	Segwaelane Community Hall	BBMTA Segwaelane Sub Council
19 March 2013	Bojanala Platinum District Municipality, Rustenburg	Local Economic Development officials
19 March 2013	Wonderkop Hall	BBMTA Wonderkop Sub-Council, Wonderkop Land Claims Committee

Stakeholder engagement is an ongoing process and adjacent landowners, neighbouring industries, environmental/conservation NGO's and parastatals have been informed of the proposed project as stated in paragraph 5.1. Telephonic consultation with adjacent landowners will take place throughout the scoping phase to obtain comment on the proposed project.

Figure 5 shows a few pictures taken during some of the focus group meetings held to share background information of the proposed project.



Figure 5 Pictures of the focus group meetings held during the announcement period of the proposed project

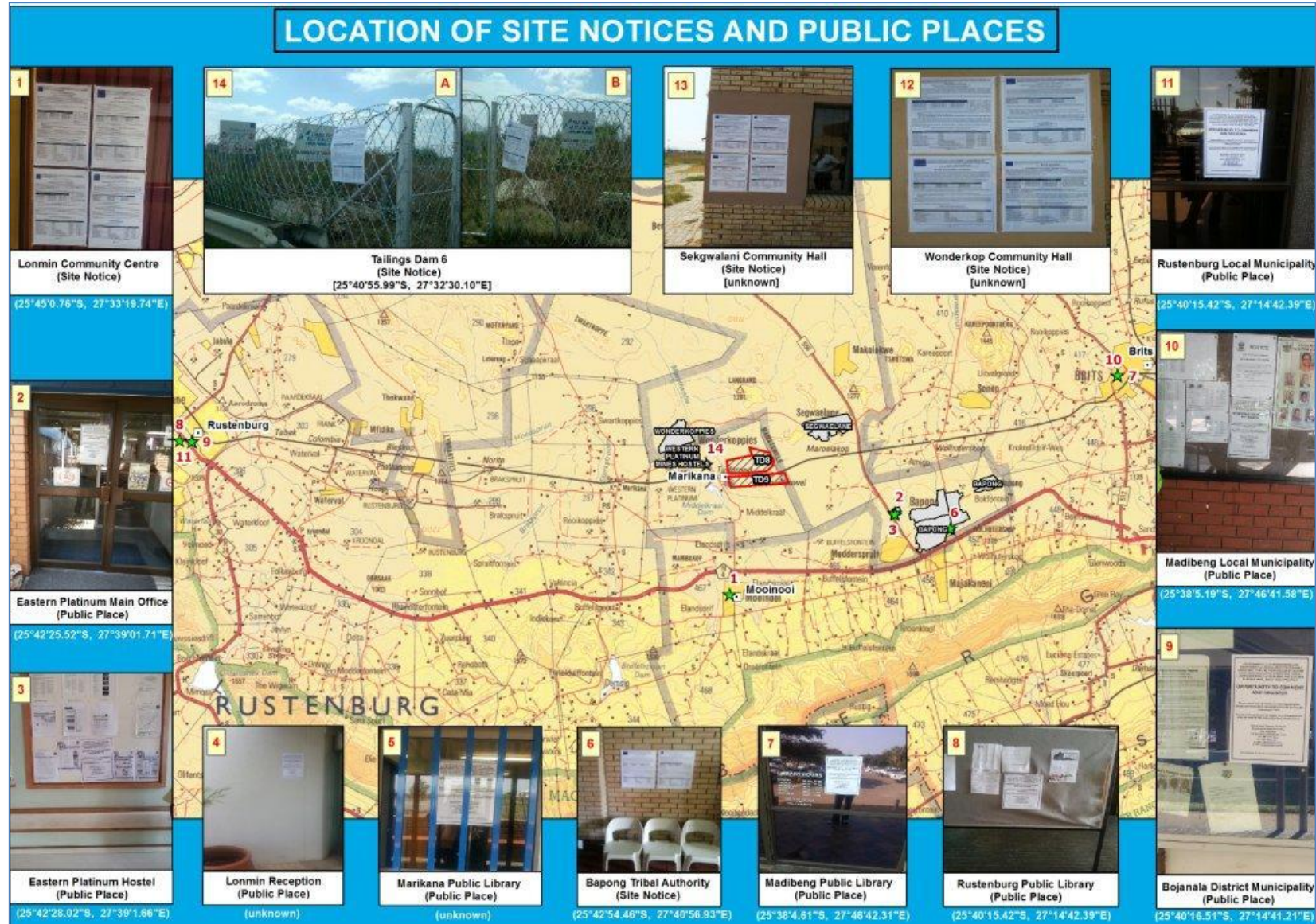


Figure 6 Map showing site notices and public places where the proposed project was announced

5.3 Announcement of the availability of the Draft Scoping Report for public comment

A period of 40 days was allowed for public review of the Draft Scoping Report (DSR). The public comment period was from **Thursday, 11 April 2013 to Friday, 24 May 2013**. The availability of the DSR was announced by way of:

- A letter to all I&APs, offering copies on request, and listing public places (same as during announcement of project) where the report would be available (See **Annexure 8**); and
- This notification letter has been sent to I&APs by their preferred ways of communication (post, e-mail or fax).
- Statutory media advertisements were placed in newspapers (same newspapers as during announcement of project) (See **Annexure 9**);
- The DSR, letters and comment sheets were left in the same public places used on announcement of the project (See **Annexure 10**);
- Made available on the SRK website (www.SRK.com); and
- Sent to stakeholders that request a copy.

Public review of the Draft Scoping Report will be by the following methods:

- Written comment, including e-mail or by completing a comment sheet accompanying the report and mailing, e-mailing or faxing it to the Stakeholder Engagement Office; and
- Verbal comment during focus group meetings held in the project area.

5.4 Obtaining stakeholder comment on the Draft Scoping Report

I&APs could contribute issues either in writing by completing and returning comment sheets, verbally by phone, or by attending focus group meetings. Comments and issues raised during all meetings and via the other number of communication opportunities will be captured in the Comment and Response Report (CRR) included in this report.

5.4.1 Focus group meetings

Focus group meetings are being held to present and discuss the DSR with key stakeholders.. Key stakeholders such as Bapo Ba Mogale Traditional Authority, Madibeng and Rustenburg Ward Councillors and government officials are being invited to attend these meetings. Should any other stakeholder request to meet with Lonmin and SRK Consulting to discuss the proposed project, arrangement will be made. **Table 8** shows details of the focus group meetings held.

The attendance lists and proceedings of these meetings are included in **Annexure 11**. All comments received during these meetings are being included in the CRR.

Table 8 Details of focus group meetings to discuss the Draft Scoping Report

Date	Venue	Key stakeholder group

5.4.2 Written comments

If written comments are received from stakeholders and authorities they will be attached in **Annexure 13**. The comments will be included in the CRR.

5.5 Announcement of the availability of the Final Scoping Report for public comment

When the Final Scoping Report (FSR) is prepared at the end of the public comment period, it will be updated with additional issues, comments and suggestions raised by I&APs during the comment period.

A period of 21 days will be allowed for public review of the FSR. The availability of the FSR was announced by way of:

- A letter to all I&APs, offering copies on request, and listing public places (same as during announcement of project) where the report would be available (See **Annexure 11**);

Legislation requires that the updated FSR must be available to stakeholders again for a period of 21 days before a FSR is submitted to the authorities. The FSR will be made available at the same public places as the DSR and will also be available on the SRK website.

Registered I&APs will be notified of submission of the updated FSR to the authorities and may request copies of the Report.

5.6 Comment and Response Report

All comments received and issues raised during the Scoping Phase are captured in the CRR and included as an **Annexure 14**

This section presents a summary of the main issues that have been identified to date. Stakeholder consultation is an on-going process throughout the EIA process and more comments are expected during the impact assessment phase. The key comments, issues of concern and suggestions raised by stakeholders and responses by the Lonmin and EIA project team are summarised in **Table 9**.

Table 9 Summary of stakeholder comments and issues

Category	Comments/issues raised by stakeholders	Summarised response
Company conduct and policy	Stakeholders wanted to know how long Lonmin has been operational in the area and how they ensure that host communities are informed of and involved in Lonmin activities	Lonmin has been operational in the area since 1973. A dedicated Community Development Section in Lonmin ensures that host communities are informed of and involved in Lonmin activities.
Project specific issues	Stakeholder comments referred to the location of the tailings storage facilities (TSF) as well as specific issues such as the safety features and construction requirements associated with the TSFs	TSF's are engineered and constructed by specialists to ensure safety of the facility in terms of height and slope. Locality maps indicated the exact location of the TSFs.
Socio-economic	The role of communities and the way in which communities will benefit (i.e. jobs) through this process were raised by stakeholders.	The proposed project is a sustainability project, to maintain Lonmin's mining operation in accordance with their long-term business plan, thus ensuring long

Category	Comments/issues raised by stakeholders	Summarised response
		term operation of the mine and ongoing employment of the current workforce.
Stakeholder engagement	Stakeholders identified a need to engage more frequently and within formal processes such as the BPDM with Lonmin and to have a better understanding of their operations and in particular the proposed project.	Lonmin offered to arrange tours for stakeholders to their operations and ensured stakeholders of their willingness to continuously engage.
Township expansion	The Bapo Ba Mogale Traditional Authority raised the issue of township expansion and requested information on whether and how Lonmin's future expansion will impact the township's expansion.	Should these developments form part of forma township developments, then the Municipality will have to follow formal processes in terms of establishing these developments. Alternatively, such development projects could be considered in future to form part of Lonmin's Housing and Living Conditions Strategy or the Community Development Programme. These projects must be considered on merit and priority by the External Affairs Department.

5.7 Submission of Scoping Report to Authorities

The Scoping Report will be distributed to competent and commenting authorities as shown in **Table 10**.

Table 10 Submission of Scoping Report to Authorities

Authority	Date submitted
DMR	
DEDECT	
DWA	
Madibeng Local Municipality	
Bojanala Platinum District Municipality	
BBMTA	
SAHRA	

6 Stakeholder engagement during the Impact Assessment phase

Stakeholder engagement during the Impact Assessment Phase revolves around review of the findings of the impact assessment presented: in the Draft EIA / EMP Amendment Report (for both the NEMA and MPRDA) and IWUL Amendment report (for the NWA), which will be made available for public comment. Media advertisements will announce the availability of the Draft EIA and EMP Amendment Report and WULA Amendment report for public comment and registered I&APS will be informed by way of personal letters. Stakeholders will once again be invited to focus group meetings to discuss the report. These details will be confirmed closer to the time. Stakeholders will be invited to comment on the Draft EMP Amendment Report and IWUL Amendment report in any of the following ways:

- By raising comments during key stakeholder meetings where the content of the Draft EIA/EMP Report and IWUL Amendment report will be presented;
- By completing comments sheets available with the report at public places, and by submitting additional written comments, by email or fax, or by telephone, to the stakeholder engagement office;
- The Draft EIA/EMP Report and IWUL Amendment report will be available for comment for a period of 40 days at public places in the project area, sent to everyone who requests a copy, and placed on the SRK website: www.srk.co.za; and
- The Final EIA/EMP Report and IWUL Amendment report will be made available for public comment for a period of 21 days in the same manner as the FSR.

The process will be documented in the updated Stakeholder Engagement Process report. All comments and issues raised during the comment period will be added to the CRR that will accompany the Final EIA/EMP Amendment Report.

7 Environmental Authorisation

Stakeholders will be advised in writing and by way of advertisements in the media, of the authority decision on the EIA / EMP Amendment (for both NEMA and MPRDA) and IWUL Amendment, on whether environmental authorisation has been granted to the project or not, and the conditions of each authorisation. If positive, stakeholders will be advised that the environmental authorisation decision may be appealed within 30 days after the date of decision. Notification of the authority decision will be provided as follows:

- A letter will be sent out to all registered I&APs, summarising the authorities' decision and explaining how to lodge an appeal should they wish to; and
- An advertisement to announce the authorities' decision will be published in local newspapers.

8 Conclusion

Contributions to the EIA process by a wide range of stakeholders and the authorities will assist to add value to the findings and recommendations of the EIA/EMP Report (for both the NEMA and MPRDA) and IWUL Amendment Report (for the NWA) and the authority decision-making process. The range of issues received will be reflected in the CRR report, which will accompany the submission of the Final EIA/EMP Report to the competent authorities. These stakeholder issues will

inform the scope of the impact assessment phase studies, and ensure that the relevant aspects and issues are considered.

Prepared by



Elna de Beer
Senior Stakeholder Engagement Specialist

Reviewed by



Vassie Maharaj
Associate Partner
Principal Consultant Stakeholder Engagement

Annexures

Annexure 1: Stakeholder Database

436739 - LONMIN IAP BASELINE DATABASE

Mr/Ms	First Name	Last Name	Stakeholder Category	Company
Mr	Willie	Van Niekerk	Business & Commerce	Infotox
Mr	Khuselwa	Dingiswayo	Business & Commerce	Khuselwa Communications cc
Mr	Takalani	Kwinda	Business & Commerce	Sinvent Investments 141 Pty Ltd
Ms	Rene	Smit	Business & Commerce	Xstrata South Africa Pty Ltd
Mr	Brian	Dames	Business & Commerce, Landowner	
Mr	Aboo	Cassim	Business & Commerce, Landowner	Amirana Trading CC
Mr	Anton	Schaap	Business & Commerce, Landowner	Archipax 44 CC
Mrs	Naomi	Van der Colff	Business & Commerce, Landowner	Clidet No. 781 Pty Ltd, Alsa Develops Marikana Pty Ltd
Mr	Ismail	Suliman	Business & Commerce, Landowner	Dopper Inv CC
			Business & Commerce, Landowner	Erasmus Marthinus Stephanus Administrators
Mr	Willem	Du Preez	Business & Commerce, Landowner	Full Swing Trading 101 CC
Mr	Farak	Saloojee	Business & Commerce, Landowner	Golden Quilt Inv 157 CC
Mrs	Amanda	Bubu	District Municipality	Bojanala District Municipality
Mr	Innocence	Sirovha	District Municipality, Public Places	Bojanala District Municipality
Mrs	Fransina	Steyn	Farmer	Portion 71 Zwartkoppies 296 JQ
Mr	Willem	Botha	Farmer	Portions 29,96,97 Zwartkoppies 296JQ
Mr	Jacobus	Kotze	Farmer	Portions 56,86,87,89 Zwartkoppies 296 JQ
Ms	Nela	Botha	Farmer, Landowner	Farmer
Mr	Marthinus	Barnard	Farmer, Landowner	Portions 56,57,86,87,89,98 Farm Zwartkoppies 296JQ
Mr	Jacob	Traut	Farmer, Landowner	Portions 56,86,87,89 Farm Zwartkoppies 296 JQ
Ms	Annet	De Beer	Interested and Affected Party	Krokodildrift wes plot
Mr	Adam	Botha	Landowner	Adam Botha Familie Trust
Mr	Fanus	Botha	Landowner	Fanus Botha Trust
			Landowner	G & T Familietrust
Mr	Andre	Venters	Landowner	Portion 52 Rooikoppies 297 JQ
Mr	Cassim	Omar	Landowner	Portion 87 Rooikoppies 297 JQ
Mr	Peter	Fourie	Landowner	Portions 60,68 Rooikoppies 297 JQ
Mr	Deon	Verster	Landowner	Vercor
Ms	Julia	Prinz	Landowner, Mining & Industry	International Ferro Metals Limited
Ms	Kgomotso	Setshedi	Local Government	Bojanala Platinum District Municipality
Mr	Steven	Mukhola	Local Government	DEDECT
Mr	Thomas	Baloi	Local Government	Department of Health
Ms	Motshabi	Mohlalisi	Local Government	North West DEDECT
ClIr	Nomxolisi		Local Municipality	Madibeng Local Municipality
Mr	Mondi	Juta	Local Municipality, Public Places	Madibeng Local Municipality
Mr	M	Tsotetsi	Local Municipality	Madibeng Local Municipality
Mrs	Neo	Matsena	Local Municipality	Madibeng Local Municipality
ClIr	L	Mnkhana	Local Municipality, Public Places	Madibeng Local Municipality - Ward 7
ClIr	I	Padi	Local Municipality	Madibeng Local Municipality - Ward 25
ClIr	N	Mponwana	Local Municipality	Madibeng Local Municipality - Ward 26
ClIr	Moleboheng	Nqetho	Local Municipality	Madibeng Local Municipality - Ward 27
ClIr	G	Betha	Local Municipality	Madibeng Local Municipality - Ward 28

Cllr	P	Makgabo	Local Municipality	Madibeng Local Municipality - Ward 31
Mr	Jan	Pieters	Local Municipality 436739 - LONMIN IAP BASELINE DATABASE	Rustenburg Local Municipality
Dr	Maletse	Mako	Local Municipality, Public Places	Rustenburg Local Municipality
Mr	Tshepo	Lenake	Local Municipality	Rustenburg Local Municipality
Cllr	R K	Motlhasedi	Local Municipality	Rustenburg Local Municipality - Ward 31
Cllr	Appreciate	Ndlovu	Local Municipality	Rustenburg Local Municipality - Ward 32
Ms	Michelle	Crawford	Mining & Industry	Aquarius Platinum Pty Ltd
Mr	Hulme	Scholes	Mining & Industry	Aquarius Platinum Pty Ltd
Ms	Helene	Nolte	Mining & Industry	Aquarius Platinum Pty Ltd
Mr	Edward	Victor	Mining & Industry	Maude Mining and Exploration Pty Ltd
Ms	Nicole	Spruijt	Mining & Industry	Portions 22,23,24 Buffelsfontein 465JQ
Mr	Loucas	Pouroulis	Mining & Industry	Salene Mining Pty Ltd
Ms	Eugenie	Ceccarelli	Mining & Industry	Samancor Chrome Ltd
Mrs	Chere-Lee	Beukes	Mining & Industry	Tharisa Minerals Pty Ltd
Mr	Rassie	Erasmus	Mining & Industry	Tharisa Minerals Pty Ltd
Mr	Mazwi	Lushaba	National Government	DEA
Mr	Chris	de Bruyn	NGOs	Federation for Sustainable Environment (FSE)
Mr	Fulu	Mukhadi	NGO - Environment & Conservation	SANBI
Mr	Baart	Smit	Parastatal	Eskom Pty Ltd
Mr	Gareth	Smith	Project Team	Lonmin
Ms	Hazel	Fiehn	Project Team	Lonmin
Mrs	Mandy	Jubileus	Project Team	Lonmin
Mr	Jaco	Venter	Project Team	Lonmin - Capital Projects
Mr	Rudolf	Tubb	Project Team	Lonmin Estate
Mr	Victor	Tseka	Project Team	Lonmin Estate
Mr	Selwyn	Green	Project Team	Lonmin Platinum Western Platinum Mine
Mrs	Elize	Swart	Project Team	Lonmin PLC
Mr	Aaron	Kharivhe	Provincial Authority - Commenting Authority	Department of Mineral Resources (DMR)
Mr	Desmond	Makamu	Provincial Authority - Commenting Authority	Department of Mineral Resources (DMR)
Mr	Chadwick	Lobakeng	Provincial Authority - Commenting Authority	Department of Water Affairs (DWA)
Mr	Delta	Mahlaku	Provincial Authority - Competent Authority	DEDECT
Mr	Boiteumelo		Provincial Authority - Competent Authority	Department of Land Affairs
Ms	Neo	Kgokong	Provincial Authority - Competent Authority	Department of Mineral Resources (DMR)
Ms	Sebenzile	Ntshangase	Provincial Authority - Competent Authority	Department of Water Affairs (DWA)
Mr	Livhuwani	Kutame	Provincial Authority - Competent Authority	North West DEDECT
Ms	Andiswa	Sibanyoni	Provincial Government	Commission on Restitution of Land Rights
Ms	Lerato	Mokgwatleng	Provincial Government	North West DEDECT
Ms	Ina	Annandale	Public Places	Madibeng Public Library
Mr	Pieter	Louw	Public Places	Rustenburg Public Library
Ms	Refilwe	Motlhabane	Public Places	Marikana Public Library
Mr	David	Makhema	Public Places	EPL Hostel
Mrs			Public Places	Lonmin Reception
Mrs	Hanlie	Ryan	Public Places	EPL Main Offices
Mr	Patrick	Molise	Public Places	Wonderkop Hostel
Mrs	Elize	Smith	Public Places	Lonmin Community Centre

Mr	Motlana	Mphoreng	Public Places , Traditional Authority	Bapo Ba Mogale Traditional Authority
Mr	Willie	Barnard	Traditional Authority 436739 - LONMIN IAP BASELINE DATABASE	Barnard Tribe

Annexure 2: Project Announcement: BID, Letter, I&AP registration and comment sheet



11 March 2013

Dear Stakeholder

INVITATION TO REGISTER AND PARTICIPATE: ENVIRONMENTAL AUTHORISATIONS AND ENVIRONMENTAL MANAGEMENT PROGRAMME AMENDMENT FOR THE PROPOSED NEW TAILINGS DAMS AND ASSOCIATED INFRASTRUCTURE AT WESTERN PLATINUM AND EASTERN PLATINUM MINE, NEAR MARIKANA, NORTH WEST PROVINCE

DEDECT Number: NWP/EIA/08/2012
DMR Ref no for WPL: ML 8/95
DMR Ref no for EPL: 3/96:

- **Availability of Background Information Document (BID) for comment**
- **Invitation to register as Interested and Affected Party**
- **Next steps in the Environmental Authorisation process**

Dear Interested and Affected Party

Lonmin Platinum Mine (Lonmin) operates as Western Platinum Limited (WPL) and Eastern Platinum Limited (EPL). Lonmin is required to expand on the WPL Mining Right area as a result of limited storage capacity of their existing tailings facilities and thus, new tailings storage facilities are required to allow for future mining activities. In addition, infrastructure such as pipelines and pump stations are required to transport tailings from their Eastern Platinum Tailings Dam 1 to 1 SHAFT UG2 Concentrator, Eastern Platinum Tailings Dam 2 and additional pipelines from Rowland Concentrator to the proposed new tailings facilities, to be called Tailings Dam 8 (TD 8) and TD 9. The new TD8 and TD9 facilities will provide tailings storage for both Mining Right areas for WPL and EPL.

The proposed Lonmin Project is situated approximately 10 km east of Marikana and approximately 4 km south east of Wonderkop. It is located in the Madibeng Local Municipal area and falls within the Bojanala District Municipality. The project area is in the vicinity of the Wonderkop Township and the Segwaelane Township

The components of the proposed project are:

- Construction of two new tailings storage facilities Western Platinum Tailings Dam 8 (TD8) and Western Platinum Tailings Dam 9 (TD9).
- Service road to service the pipelines and tailings dams (gravel roads will be constructed inside the site and will be linked with the existing mine road network). River diversions, south of the Western Platinum TD8 ;

Partners JCJ Boshoff, AH Bracken, MJ Braune, JM Brown, CD Dalgliesh, JR Dixon, DM Duthe, BM Engelsman, R Gardiner, T Hart, GC Howell, WC Joughin, PR Labrum, DJ Mahlangu, RRW McNeill, HAC Meintjes, JA Middleton, MJ Morris, WA Naismith, GP Nel, VS Reddy, PN Rosewame, PE Schmidt, PJ Shepherd, VM Simposya, AA Smithen, KM Uderstadt, DJ Venter, ML Wertz, A Wood

Directors AJ Barrett, JR Dixon, PR Labrum, DJ Mahlangu, VS Reddy, PE Schmidt, PJ Shepherd

Associate Partners DJD Gibson, M Hirsch, DA Kilian, SA McDonald, M Ristic, MJ Sim, JJ Slabbert, HFJ Theart, D Visser, DP van den Berg, MD Wanless

Consultants AC Burger, *BSc(Hons)*; IS Cameron-Clarke, *PrSciNat, MSc*; JAC Cowan, *PrSciNat, BSc(Hons)*; JH de Beer, *PrSci Nat, MSc*; GA Jones, *PrEng, PhD*; TR Stacey, *PrEng, DSc*; OKH Steffen, *PrEng, PhD*; PJ Terbrugge, *PrSciNat, MSc*; DW Warwick, *PrSciNat, BSc(Hons)*

SRK Consulting (South Africa) (Pty) Ltd

Reg No 1995.012890.07

African Offices:

Cape Town	+ 27 (0) 21 659 3060
Durban	+ 27 (0) 31 279 1200
East London	+ 27 (0) 43 748 6292
Johannesburg	+ 27 (0) 11 441 1111
Kimberley	+ 27 (0) 53 861 5798
Pietermaritzburg	+ 27 (0) 33 345 6311
Port Elizabeth	+ 27 (0) 41 509 4800
Pretoria	+ 27 (0) 12 361 9821
Rustenburg	+ 27 (0) 14 594 1280
Accra	+ 23 (3) 24 485 0928
Harare	+ 263 (4) 49 6182
Lubumbashi	+ 243 (0) 81 999 9775

Group Offices:

Africa
Asia
Australia
Europe
North America
South America



- Re-lining and expansion of the current return water dam, as per DWA requirements;
- Expansion of pipelines from Rowland Concentrator to TD8;
- Construction of pipelines from Eastern Platinum TD2 to Western Platinum TD8; and
- Construction of a proposed pump station for the transport of Tailings from TD2 to TD8.
- Construction of pipelines from Eastern Platinum Tailings Dam 2 to UG2 Concentrator.

Lonmin is in possession of an approved Environmental Management Programme Report (EMPR) according to the Mineral and Petroleum Resources Development Act (MPRDA) (Act 28 of 2002). This EMPR is a legally binding document, and details Lonmin's mining activities and environmental management requirements at their Western Platinum mines.

Before Lonmin can commence with the proposed project, the following environmental authorization applications need to be undertaken:

- An Environmental Impact Assessment (EIA) in terms of the National Environmental Management Act (Act No. 107 of 1998) (NEMA);
- EMP Amendment in terms of the MPRDA (Act 28 of 2002)
- An Integrated Water Use License Application (IWULA) in terms of the National Water Act (Act No. 36 of 1998) (NWA).

Lonmin appointed SRK Consulting as the independent Environmental Assessment Practitioner to undertake the environmental authorization and associated stakeholder engagement process for the above applications. The process will be followed to meet the requirements of the NEMA, MPRDA and NWA. The lead authority for the NEMA component of the project will be the Department of Economic Development, Environment, Conservation and Tourism (DEDECT), North West province. The IWULA will be submitted to the Department of Water Affairs (DWA) Regional Offices of the North West Province and the MPRDA component to the Department of Mineral Resources (DMR) Regional Offices of the North West Province.

Availability of BID for public comment

The enclosed Background Information Document (BID) describes the proposed Lonmin Tailings dam project and provides an overview of the environmental authorisation process. It provides interested and affected parties (I&APs) with an initial opportunity to comment on the proposed project and to register as an I&AP. More documents will become available during further stages of the environmental authorisation process. Your comments and suggestions on any aspect of the proposed project, including the technical and stakeholder engagement processes, will help to focus the technical studies, and will ultimately assist the authorities to make a decision.

The BID includes:

- A description of the proposed project;
- The environmental authorisation and stakeholder engagement processes to be followed;
- How stakeholders can register and become involved in the process; and
- Potential issues of concern for evaluation in the specialist studies.

The BID, with an accompanying Registration and Comment Form, will also be available for public comment at the Public Places listed in the table below.

Table 1 Public Places where BIDs are available

Public Place	Locality	Contact	Telephone
Lonmin Reception	Marikana	Hazel Fiehn	014 571 2182
EPL Hostel	Marikana	David Makhema	014 571 4439
EPL main offices	Marikana	Hanlie Ryan	014 571 2399
Wonderkop Hostel Offices	Marikana	Patrick Molise	014 571 3348
Lonmin Community Centre	Mooiooi	Elize Smith	014 571 4211
Bapo Ba Mogale Traditional Authority	Marikana	M Mphoreng	012 261 1500
Marikana Public Library	Marikana	R Motlhabane	014 572 3611

Public Place	Locality	Contact	Telephone
Madibeng Local Municipality	Van Velden Street, Madibeng	Reception	012 318 9500
Madibeng Public Library	Van Velden Street, Madibeng	Ina Annandale	012 318 9318
Rustenburg Local Municipality	C/o Beyers Naude & Mandela Str, RTB	Maletsi Mako	014 590 3551
Rustenburg Public Library	C/o Heystek & Thabo Mbeki, Rustenburg	Pieter Louw	014 590 3295
Bojanala District Municipality	C/o Beyers Naude & Fatima Bhayat Dr. RTB	Reception	014 590 4500

Invitation to register as I&AP

You are invited to register as an interested and affected party (I&AP) for this specific environmental authorisation process, comment or raise any issue of concern. Please complete the attached Comment Form and return it to the SRK Stakeholder Engagement Office.

You are welcome to comment on the BID by:

- Completing the enclosed registration and comment form and submitting it to the stakeholder engagement office;
- Writing a letter or additional written submission by mail, email or fax; and
- Calling the stakeholder engagement office.

As per the regulatory requirements, stakeholders have 30 days to register as I&APs for this project. Please submit your registrations by completing the enclosed registration form and submit to the stakeholder engagement office by **Friday, 19 April 2013**.

Next steps in the Environmental Authorisation process

Following the announcement of the proposed project, the Draft Scoping Report will be made available for public comment during the second quarter of 2013. Stakeholders and I&APs will be informed of the dates for the availability of this report in due course as well as the open houses where the Draft Scoping Report will be presented and discussed.

Should you have any questions, need more information, or wish to raise issues of concern or suggestions, please contact

Elna de Beer – tel: +27 (0)11 441 1111/email: edebeer@srk.co.za /fax: + 27 (0)11 086 506 1737

Thank you for your contributions to this environmental authorisation process and we look forward to meeting with you in due course.

SRK Consulting - Certified Electronic Signature

 *Elna de Beer*

436739/41338/Letter
9657-476-3234-DEEL
This signature has been printed digitally. The Author has given permission for its use for this document. The details are stored in the SRK Signature Database.

ELNA DE BEER

Stakeholder Engagement Office: Lonmin's proposed Tailings dams Project

ENVIRONMENTAL AUTHORISATIONS FOR THE PROPOSED NEW TAILINGS STORAGE FACILITIES (TD8 AND TD9) AND ASSOCIATED INFRASTRUCTURE AT LONMIN'S WESTERN PLATINUM MINE AND EASTERN PLATINUM MINE, NORTH WEST PROVINCE

DEDECT Number: NWP/EIA/08/2012
DMR Ref no for Western Platinum Mine: ML 8/95
DMR Ref no for Eastern Platinum Mine: ML 3/96

Background Information Document and Invitation to Register

March 2013

(Also available in Setswana, Xhosa and Afrikaans)



BACKGROUND AND INTRODUCTION

Lonmin Platinum Mine (Lonmin) operates both Western Platinum Limited (WPL) and Eastern Platinum Limited (EPL). As a result of limited storage capacity, new tailings storage facilities and associated infrastructure are required. This includes the construction of:

- Tailings Dam (TD) 8 and TD9 on WPL
- Construction of new and the upgrading of existing pipelines for the transport of tailings from existing concentrators to the new Tailings Dams
- Pump stations, and
- A return water dam

This infrastructure will support future mining activities for both EPL Mining Right Area and WPL Mining Right Area.

Lonmin has an approved Environmental Management Plan (EMP) as required by the Mineral and Petroleum Resources Development Act (MPRDA) (Act 28 of 2002) for both WPL and EPL.

Before Lonmin can commence with the proposed project, the following environmental authorisation applications need to be undertaken:

- An Environmental Impact Assessment (EIA) in terms of the National Environmental Management Act (Act No. 107 of 1998) (NEMA) to be submitted to the North West province Department of Economic Development, Environment, Conservation and Tourism;
- EMP Amendment in terms of the MPRDA (Act 28 of 2002) to be submitted to the regional North West Province Department of Mineral Resources; and
- A Water Use License (WUL) Application (Amendment to the Integrated Water Use Licence IWUL) in terms of the National Water Act (Act No. 36 of 1998 NWA).

Who is Lonmin Platinum Mine?

Lonmin Platinum Mine (Lonmin) is a South African Platinum Mining Company located in the North West Province. Lonmin is registered on the London Stock Exchange and the Johannesburg stock exchange. Lonmin owns the land and has mining rights to mine platinum on the site proposed for the new Infrastructure.

Lonmin has appointed SRK as an independent Environmental Assessment Practitioner to undertake the environmental authorisation process and the associated stakeholder engagement.

The purpose of this Background Information Document (BID) is to provide Interested and Affected Parties (I&APs) with information about the proposed project and its components, the regulatory process and how to become involved in this process.

INVITATION TO COMMENT AND REGISTER AS INTERESTED AND AFFECTED PARTY

Should you wish to register as an interested and affected party for this specific environmental authorisation process (i.e. Lonmin Platinum Mine Project), request more information, and / or raise issues or comments, please complete the attached Registration and Comment Sheet and return it to the SRK Stakeholder Engagement Office.

STAKEHOLDER ENGAGEMENT
<p>Elna de Beer SRK Consulting P O Box 55291 Northlands 2116</p> <p>Tel: +27(0)11 441 1111 Fax: +27(0)86 5061737 Email: edebeer@srk.co.za</p>

PLEASE SUBMIT YOUR COMMENTS AND REGISTRATION AS INTERESTED AND AFFECTED PARTY BY FRIDAY, 19 APRIL 2013



Figure 1 View of the Lonmin proposed project area

LOCATION OF PROPOSED PROJECT

The proposed Lonmin Project is situated approximately 4 km south east of Wonderkop. It is located in the Madibeng Local Municipal area and falls within the Bojanala District Municipality. The project area is in the vicinity of the Wonderkop Township and the Segwaelane Township (See Figure 2)

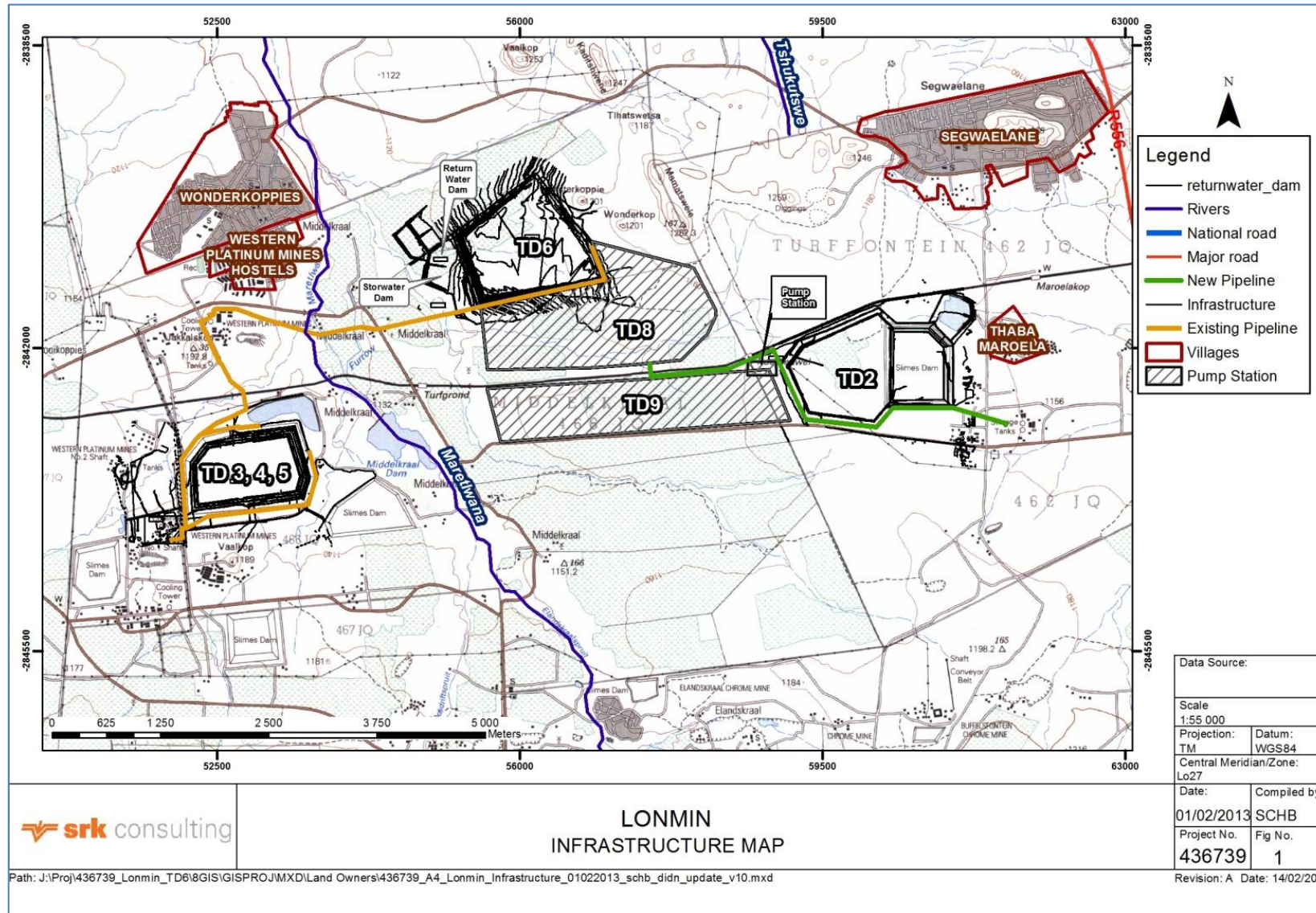


Figure 2 Regional setting of the proposed Lonmin project showing existing operations and components of the proposed new tailings dams and associated infrastructure

PROPOSED PROJECT

Lonmin proposes to construct two new tailings dams in order to ensure adequate storage is available for the life of mine. This will also involve the construction of associated infrastructure such as pipelines, pump stations, service roads and associated return water dam.

The layout and components of the proposed project are shown in Figure 2 and include:

- Construction of two new tailings storage facilities Western Platinum Tailings Dam 8 (TD8) and Western Platinum Tailings Dam 9 (TD9);
- Service road to service the pipelines and tailings dams (gravel roads will be constructed inside the site and will be linked with the existing mine road network);
- River diversions, south of the Western Platinum TD8;
- Re-lining and expansion of an existing return water dam, as per DWA requirements;
- Expansion of pipelines from Rowland Concentrator to TD8;
- Construction of pipelines from Eastern Platinum TD2 to Western Platinum TD8;
- Construction of a proposed pump station for the transport of Tailings from TD2 to TD8; and
- Construction of pipelines from Eastern Platinum Tailings Dam 2 to UG2 Concentrator.

Tailings Dam 8 is planned to be adjacent to the current TD6 and will eventually join with TD6 while TD9 is planned next to a current haul road south of TD8. Within the proposed TD8 footprint is a seasonal stream that will need to be diverted. Tailings will be pumped to the proposed TD 8 from the 1 SHAFT UG2 Concentrator, via the Rowland complex in existing pipelines that need to be expanded and upgraded. Tailings will also be pumped from EPL operations via the TD2 pump station to the proposed TD 8.

An additional pipeline will be constructed from TD2 to the UG2 Concentrator. All pipelines will require the construction of a pump station to pump the tailings, as well as service roads, one of which will cross the stream diversion. The proposed TD 8 will be developed first and will be followed by the proposed TD 9 when required. The runoff from both proposed TD 8 and proposed TD 9 is planned to flow into an existing return water dam which will be relined and expanded as per requirements of the National Water Act.

What are Tailings?

Tailings are the materials left over after the process of separating the valuable or from the less valuable ore. Tailings are made up of pulverized waste mineral mixed with water.

Project timelines

Should environmental authorisation be granted to proceed with the proposed project, the anticipated project timelines are:

- **Life of mine = 50 years (until 2067)**
- **Construction = start by July 2014**
- **First production = December 2015**

Site selection

The preferred site was selected as it is in close proximity to the existing WPL TD6, EPL TD2 and the concentrators for both EPL and WPL. Additionally, the proposed tailings facilities and infrastructure will be located on properties owned by the mine (Table 1).

Table 1 Project area identified by land portions

Land portions	Land portions	Land portions
Middelkraal 466 JQ RE56	Middelkraal 466 JQ RE44	Middelkraal 466 JQ RE58
Middelkraal 466 JQ RE50	Middelkraal 466 JQ RE43	Middelkraal 466 JQ RE46
Middelkraal 466 JQ REe9	Middelkraal 466 JQ RE63	Middelkraal 466 JQ RE26
Middelkraal 466 JQ RE51	Middelkraal 466 JQ RE60	Middelkraal 466 JQ RE24
Middelkraal 466 JQ RE69	Middelkraal 466 JQ RE37	Middelkraal 466 JQ RE2
Middelkraal 466 JQ RE45		

Social Labor Plan

Lonmin WPL and EPL have Social and Labour Plans (SLP) that have been approved by the Department of Mineral Resources (DMR). These SLPs will form part of the EMPR Amendment document for this project.

Health and Safety

The proposed project will adhere to the requirements of the Lonmin Code of Practice for tailings dams as part of the Mine Health and Safety Act No. 29, 14 June 1996 requirements.

Environmental Management and Rehabilitation

Once environmental authorisation has been obtained both in terms of NEMA and the MPRDA, monitoring will take place to ensure that the approved EMPR is implemented during all phases of the project. In terms of the MPRDA, a performance assessment will be undertaken once every two years to assess the compliance with the conditions contained within the EMPR and possible additional requirements from the authorities. A Rehabilitation Plan (for the tailings dams and associated mining infrastructure) has been developed for mine closure which is planned in 2060. Progressive rehabilitation planning is emphasized in this plan.

Water and Electricity Requirements

The water and electricity requirements for the TD8 and TD9 and associated infrastructure will be obtained from the Mine. The estimated requirements as determined by the project team will be taken into account in the EIA and associated specialist studies.

Waste management

Domestic and hazardous waste will be produced during the construction phase of the tailings dams and will be temporarily stored on site in line with the mine's existing waste management procedures. All waste will be removed by contractors and disposed of at licensed waste disposal facilities.

ENVIRONMENTAL APPROVAL

EIA (NEMA approval)

The EIA for the proposed TD8 and TD9 is being conducted in terms of the NEMA, Act No. 107 of 1998 and the MPRDA, Act No 28 of 2002. The two processes will run in parallel and all documentation will meet the requirements of both Acts.

The EIA comprises two phases (Figure 3).

Scoping phase

During this phase, issues for investigation during the impact assessment phase are identified and the scope of the studies defined. This information is compiled into a Draft Scoping Report, and will be available for public comment. Once the comments from the stakeholder engagement process are received, the scoping report will be finalised and submitted to the relevant authorities for decision-making with regard to the remaining process for the EIA

Impact assessment phase

During the impact assessment phase, the potential impacts are determined and management measures are proposed to counter or mitigate negative impacts and enhance positive impacts. An EIA and EMP Report will be produced and made available for public comment. The report will be finalised and submitted to the DMR (under MPRDA) and DEDECT (under NEMA), who will in consultation with other authorities at national, provincial and local levels, make a decision about the proposed project.

EMP (MPRDA approval)

One EIA and EMP report will be written to encompass the needs of both the MPRDA and NEMA.

WULA (NWA approval)

A Water Use Licence amendment application (WULA) will be submitted which entails the following:

- Extension of the existing tailings and return water dam
- New tailings dam and associated return water dam
- River diversion for the tailings dam extension
- Two tailings pipeline river crossings for a new pipeline

Stakeholder engagement

This process offers stakeholders the opportunity to learn about the project, to raise issues that they are concerned about, and to make suggestions for enhanced project benefits. The technical specialists and project team will evaluate relevant issues and suggestions during the EIA process. All non-technical documents for public comment will be available in English, Afrikaans, Setswana and Xhosa. Figure 3 also provides an overview of the stakeholder engagement activities associated with this environmental authorisation process.

Potential impacts and proposed specialist studies

Potential environmental sensitivities include:

- Impacts on cultural heritage
- Stream diversion
- Dust generation
- Loss of biodiversity
- Ground water and surface water contamination from tailings and pipelines.
- Soil erosion and soil contamination as a result of construction and operating conditions

YOUR COMMENT IS IMPORTANT

Your comments on the proposed project, including the stakeholder engagement process and technical issues that need to be investigated, will help focus the technical studies, and assist the authorities in their decision-making.

ENVIRONMENTAL AUTHORISATION AND ASSOCIATED STAKEHOLDER ENGAGEMENT PROCESS

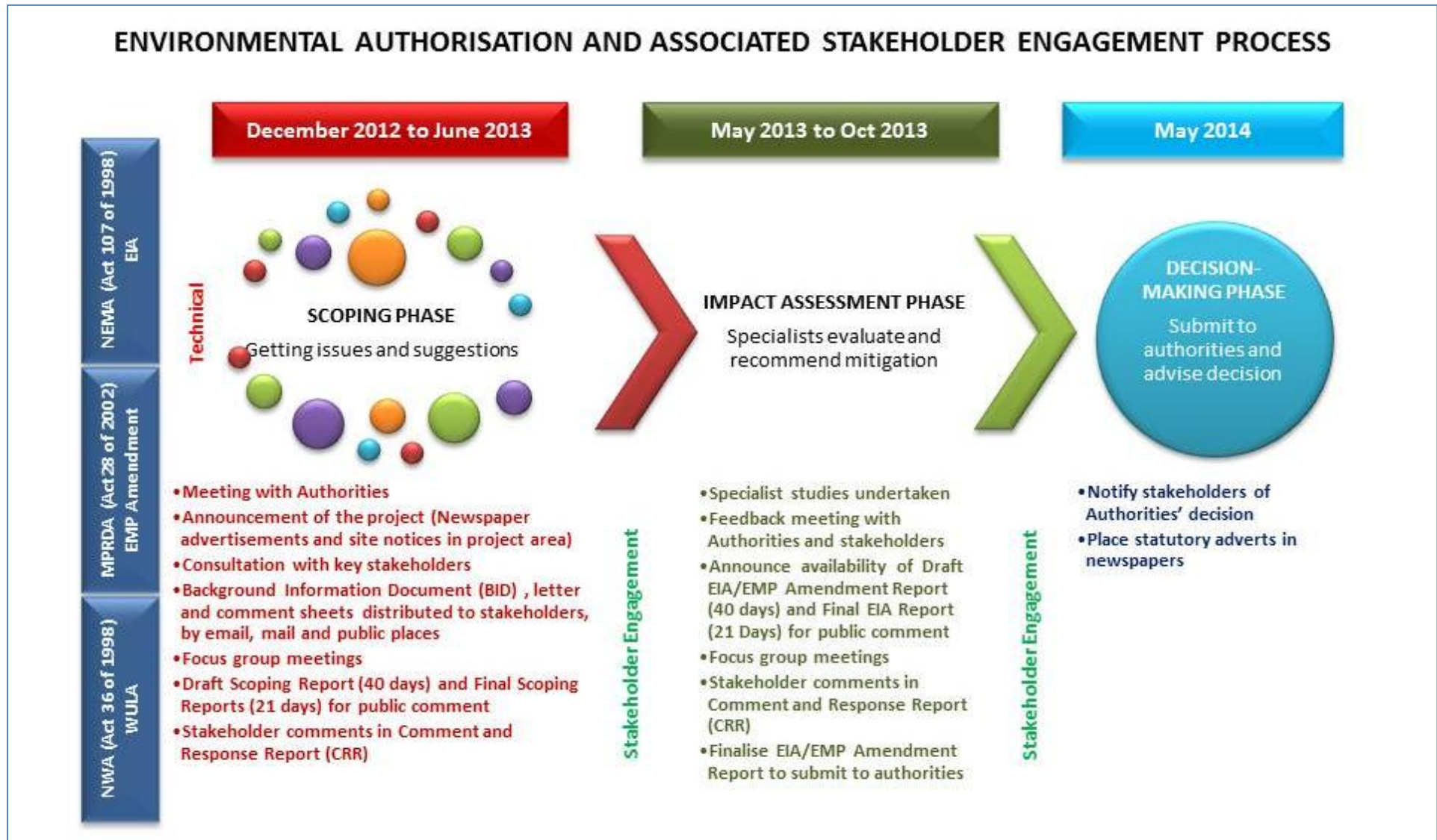


Figure 3 Environmental Authorisation and associated stakeholder engagement process

**ENVIRONMENTAL AUTHORISATIONS FOR THE PROPOSED
NEW TAILINGS STORAGE FACILITIES (TD8 AND TD9) AND
ASSOCIATED INFRASTRUCTURE AT LONMINS WESTERN
PLATINUM MINE AND EASTERN PLATINUM MINE, NORTH
WEST PROVINCE**

DEDECT Number: NWP/EIA/08/2012
DMR ref no for Western Platinum Mine: ML 8/95
DMR ref no for Eastern Platinum Mine: ML 3/96

REGISTRATION AND COMMENT SHEET

Accompanying Background Information Document
March 2013

**SRK Consulting
STAKEHOLDER ENGAGEMENT
OFFICE**

Elna de Beer/Shannon du Plessis
Stakeholder Engagement Office
SRK Consulting
P O Box 55291, Northlands, 2116
Tel: (011) 441 1111
Fax: 086 5061737
e-mail: edebeer@srk.co.za
e-mail : sduplessis@srk.co.za

Please complete and submit your comments to the Stakeholder Engagement Office by FRIDAY,19 APRIL 2013

TITLE		FIRST NAME	
INITIALS		SURNAME	
ORGANISATION			
POSTAL ADDRESS			
		POSTAL CODE	
LAND LINE TEL NO		CELL NO	
FAX NO		EMAIL	

REGISTRATION AS AN INTERESTED AND AFFECTED PARTY (I&AP) (please mark applicable box with X)

Please formally register me as an interested and affected party (I&AP) so that I may receive further information and notifications during the EIA process	YES	NO
I would like my notifications by:		
Letter (mail)	E-mail	Fax
I would like to receive documents for comment as follows:		
Paper copies	By email	On CD
In terms of GNR 543 (EIA regulations) I disclose below any direct business, financial, personal or other interest that I may have in the approval or refusal of the application:		

COMMENTS (please use separate sheets if you wish)

The following environmental, social and economic issues must be addressed during this EIA/EMP Amendment process:

.....
.....

My comment on the technical and stakeholder engagement processes is as follows:

.....
.....

Any other comments:

.....
.....

Please add the following people as I&APs to your database:

.....
.....

THANK YOU FOR YOUR CONTRIBUTION

NAME:	SIGNATURE:	DATE:
--------------	-------------------	--------------



11 Maart 2013

Geagte Belanghebbende

**UITNODIGING VIR REGISTRASIE EN DEELNAME: OMGEWINGSIMPAKSTUDIE EN
OMGEWINGSBESTUURSPROGRAM VIR DIE VIR VOORGESTELDE NUWE SLIKDAMME EN
INFRASTRUKTUUR BY LONMIN WESTELIKE PLATINUM MYN EN OOSTELIKE PLATINUM MYN,
NOORD-WES PROVINSIE**

**DEDECT Number: NWP/EIA/08/2012
DMR Ref no for WPL: ML 8/95
DMR Ref no for EPL: 3/96:**

- **Beskikbaarheid van Agtergrond Inligtings Dokument (AID) vir kommentaar**
- **Uitnodiging om as Belanghebbende party te registreer**
- **Volgende stappe in die omgewingsmagtigingsproses**

Geagte Belanghebbende Party,

Lonmin Platinum Myn (Lonmin) bedryf hul onderneming as Westelike Platinum Limited (WPL) en Oostelike Platinum Limited (EPL). Lonmin is verplig om die WPL Mynregarea uit te brei, as gevolg van beperkte opgaarkapasiteit van die bestaande sliksdam, en dus is word nuwe sliksdamme benodig vir toekomstige mynaktiwiteite. Boonop word infrastruktuur soos pyplyne en pompstasies benodig vir die vervoer van sliksdam vanaf hul EPL Sliksdam 1 tot 1 SKAG UG2 Konsentraataanleg, vanaf die UG2 Konsentraataanleg na die Rowland Konsentraataanleg, die Rowland Konsentraataanleg na TD 6 en die voorgestelde TD8 and TD9. Verder word 'n pyplynerverlenging beplan van TD2 to TD8. Die nuwe TD8 en TD9 fasiliteite sal sliksdaming vir beide mynregte areas WPL en EPL, voorsien.

The voorgestelde Lonmin Projek is ongeveer 4 km suidoos van Wonderkop in die Madibeng Plaaslike Munisipaliteit geleë en val binne die Bojanala Distrik Munisipaliteit. Die projek area is in die omgewing van die dorpe Wonderkop en Segwaelane geleë.

Die komponente van die voorgestelde projek is as volg:

- Oprigting van twee nuwe sliksdamme WPL 8 (TD8) en WPL 9 (TD9).
- Dienspad vir dienslewering tot die pyplyne en sliksdamme (grondpaaie sal binne die area gebou word en sal inskakel by die bestaande netwerk van mynpaaie). Riviervleggings, suid van die WPL TD8 ;
- Herbelyning van die uitbreiding van a bestaande terugvloeddam, volgens die vereistes van die Departement van Watersese;
- Uitbreiding van pyplyne van die Rowland Konsentraataanleg na TD8;
- Konstruksie van pyplyne van EPL TD2 na WPL TD8;

Partners J.C.J Boshoff, A.H Bracken, M.J Braune, J.M Brown, C.D Dalglish, J.R Dixon, D.M Duthe, B.M Engelsman, R Gardiner, T Hart, G.C Howell, W.C Joughin, P.R Labrum, D.J Mahlangu, R.R.W McNeill, H.A.C Meintjes, J.A Middleton, M.J Morris, W.A Naismith, G.P Nel, V.S Reddy, P.N Rosewame, P.E Schmidt, P.J Shepherd, V.M Simposya, A.A Smithen, K.M Uderstadt, D.J Venter, M.L Wertz, A Wood

Directors A.J Barrett, J.R Dixon, P.R Labrum, D.J Mahlangu, V.S Reddy, P.E Schmidt, P.J Shepherd

Associate Partners D.J.D Gibson, M Hirsch, D.A Kilian, S.A McDonald, M Ristic, M.J Sim, J.J Slabbert, H.F.J Theart, D Visser, D.P van den Berg, M.D Wanless

Consultants A.C Burger, B.Sc(Hons); I.S Cameron-Clarke, PrSciNat, MSc; J.A.C Cowan, PrSciNat, BSc(Hons); J.H de Beer, PrSci Nat, MSc; G.A Jones, PrEng, PhD; T.R Stacey, PrEng, DSc; O.K.H Steffen, PrEng, PhD; P.J Terbrugge, PrSciNat, MSc; D.W Warwick, PrSciNat, BSc(Hons)

SRK Consulting (South Africa) (Pty) Ltd

Reg No 1995.012890.07

African Offices:

Cape Town	+ 27 (0) 21 659 3060
Durban	+ 27 (0) 31 279 1200
East London	+ 27 (0) 43 748 6292
Johannesburg	+ 27 (0) 11 441 1111
Kimberley	+ 27 (0) 53 861 5798
Pietermaritzburg	+ 27 (0) 33 345 6311
Port Elizabeth	+ 27 (0) 41 509 4800
Pretoria	+ 27 (0) 12 361 9821
Rustenburg	+ 27 (0) 14 594 1280
Accra	+ 23 (3) 24 485 0928
Harare	+ 263 (4) 49 6182
Lubumbashi	+ 243 (0) 81 999 9775

Group Offices:

Africa
Asia
Australia
Europe
North America
South America



- Konstruksie van 'n voorgestelde pyplyn vir die vervoer van sliik van TD2 to TD8; en
- Konstruksie van pyplyne van EPL Slikdam 2 na die UG2 Konsentraataanleg

Lonmin is in besit van 'n goedgekeurde Omgewingsbestuursprogram-verslag (OBPV) wat voldoen aan die vereistes van die Wet op die Ontwikkeling van Minerale en Petroleum Hulpbronne (MPRDA) (Wet 28 van 2002). The OBPV is a wetlik bindende dokument wat Lonmin se mynaktiwiteite en omgewingsbestuursvereistes by hul Westelike-en-Oostelike Platinum myn, uiteensit.

Voor Lonmin kan begin met die voorgestelde projek, moet die volgende aansoeke vir omgewingsmagtiging onderneem word:

- 'n Omgewingsimpakstudie (OIS) ingevolge die die Wet op Nasionale Omgewingsbestuur (Wet Nr. 107 van 1998) (NEMA);
- 'n OBP Wysiging ingevolge die Wet op die Ontwikkeling van Minerale en Petroleum Hulpbronne (MPRDA); en
- 'n aansoek vir 'n Watergebruik Lisensie (WULA) (Aanvulling tot die Geïntegreerde Watergebruik Lisensie), ingevolge die Nasionale Waterwet (Wet Nr. 36 of 1998) (NWA).

SRK Consulting is deur Lonmin aagestel as die onafhanklike omgewingskonsultant om die omgewingsmagtigingsproses en openbare deelname proses vir die bogenomede aansoeke te onderneem. Die proses voldoen aan die vereistes van die NEMA, MPRDA and NWA. Die leidende owerheid vir die NEMA komponent van die projek is die Department van Ekonomiese Ontwikkeling, Omgewing, Bewaring en Toerisme (DEDECT), in die Noordwes Provinsie. Die WULA sal by die Streeksdantore van die Department van Watersese (DWA), Noordwes Provinsie ingedien word, en die MPRDA komponent by die Deparement van Minerale en Petroleum Hulpbronne (DMR) se streekskantore in die Noordwes Provinsie.

Beskikbaarheid van die Agtergrond Inligtingsdokument vir openbare kommentaar

Die ingeslote Agtergrond Inligtingsdokument (AID) beskryf die voorgestelde Lonmin Slikdamprojek en gee 'n oorsig oor die omgewingsmagtigingsproses. Dit voorsien belanghebbende en geaffekteerde partye van 'n eerste geleentheid om kommentaar op die voorgestelde projek te lewer, en om as belanghebbende en geaffekteerde partye te registreer. Meer dokumente sal beskikbaar gestel word gedurende verdere fases van die omgewingsmagtigingsproses. U kommentaar en voorstelle rakende enige aspek van die voorgestelde projek, insluitend tegniese en openbare deelname, sal bydra om die tegniese studies te vestig, en sal uiteindelik die owerhede bystaan om 'n finale besluit te neem.

Die AID sluit in:

- 'n Beskrywing van die voorgestelde projek;
- Die omgewingsmagtigingsproses en die openbare deelname proses;
- Hoe belanghebbende partye kan registreer en betrokke raak in die proses; en
- Potensiële kwessies en besordhede vir evaluasie in die spesialis studies.

Die AID, en die aangehegte Registrasie en Kommentaarvorm, sal ook vir kommentaar beskikbaar wees in die openbare plekke soos hieronder gelys.

Tabel 1 Openbare plekke waar AID beskikbaar is

Openbare Plek	Lokaliteit	Kontak	Telefoonnommer
Lonmin Ontvangs by LPD	Marikana	Hazel Fiehn	014 571 2182
EPL Hostel	Marikana	David Makhema	014 571 4439
EPL Kantore	Marikana	Hanlie Ryan	014 571 2399
Wonderkop Hostel Kantoor	Marikana	Patrick Molise	014 571 3348
Lonmin Community Centre	Mooiooi	Elize Smith	014 571 4211
Bapo Ba Mogale Tradisionele Owerheid	Marikana	MMphoreng	012 261 1500
Marikana Openbare Biblioteek	Marikana	R Motlhabane	014 572 3611
Madibeng Munisipaliteit	Van Velden Straat, Madibeng	Ontvangs	012 318 9500

Openbare Plek	Lokalisiteit	Kontak	Telefoonnommer
Madibeng Openbare Biblioteek	Van Velden Straat, Madibeng	Ina Annandale	012 318 9318
Rustenburg Plaaslike Owerheid	H/v Beyers Naude & Mandela Str, RTB	Maletsi Mako	014 590 3551
Rustenburg Openbare Biblioteek	H/v Heystek & Thabo Mbeki, Rustenburg	Pieter Louw	014 590 3295
Bojanala District Municipality	H/v Beyers Naude & Fatima Bhayat Dr. RTB	Ontvangs	014 590 4500

Uitnodiging om as belanghebbende en geaffekterde partye te registreer

U word uitgenooi om as 'n belanghebbende en geaffekteerde party te registreer vir hierdie spesifieke omgewingsmagtigingsproses, om kommentaar te lewer, of enige kwessies of besorgdhede te lug. Vul asseblief die aangehegte Kommentaarvorm in en stuur dit aan die SRK Openbare Deelname Kantoor.

U is welkom om op die AID kommentaar te lewer as volg:

- Vul die aangehegte registrasie en kommentaarvorm in en handig by die openbare deelname kantoor in;
- Skryf 'n brief, of dien addisionele kommentaar in deur die pos, epos of faks; en
- Skakel die openbare deelname kantoor.

Volgens wetgewing word belanghebbende partye 30 dae gegun om te registreer vir hierdie projek. Registreer asseblief deur die aangehegte registrasievorm in te vul en handig dit by die openbare deelname kantoor in teen **Vrydag, 19 April 2013**.

Volgende stappe in die omgewingsmagtigingsproses

Na aankondiging van die voorgestelde projek sal die Konsep Omvangbepalingsverslag vir openbare kommentaar beskikbaar gestel word. Belanghebbende en geaffekteerde partye sal eersdaags in kennis gestel word van die datum wanneer die verslag beskikbaar sal wees, sowel as die datums van openbare vergaderings waar die Konsep Omvangbepalingsverslag voorgelê en bespreek sal word.

Indien u enige navrae het, verdere inligting verlang, of kwessies en besordhede will bespreek, kontak asseblief

Elna de Beer – tel: +27 (0)11 441 1111/epos: edebeer@srk.co.za /faks: + 27 (0)11 086 506 1737

Dankie vir u bydrae in die omgewingsmagtigingsproses en ons sien daarna uit om u in die nabye toekoms te ontmoet.

SRK Consulting - Certified Electronic Signature

 **srk consulting**
436739/41338/Letter
9657-476-3234-DEEL
This signature has been printed digitally by the Author. No other permission for its use for this document. The details are stored in the SRK Signature Database

ELNA DE BEER

Openbare Deelname Kantoor: Lonmin se voorgestelde Slikdamprojek

OMGEWINGSMAGTIGINGS VIR DIE VOORGESTELDE NUWE SLIK DAMME (TD8 AND TD9) EN GEASSOSIEERDE INFRASTRUKTUUR BY LONMIN SE WESTELIKE PLATINUM MYN EN OOSTELIKE PLATINUM MYN, NOORD-WES PROVINSIE

DEDECT Nommer: NWP/EIA/08/2012
DMR Verw. nr. vir Westelike Platinum Myn: ML 8/95
DMR Verw. nr. for Oostelike Platinum Myn: ML 3/96

Agtergrond Inligtingsdokument en Uitnodiging vir Registrasie

Maart 2013

(Ook beskikbaar in Engels, Setswana en Xhosa)



AGTERGROND EN INLEIDING

Lonmin Platinum Myn (Lonmin) bedryf hul onderneming as Westelike Platinum Limited (WPL) en Oostelike Platinum Limited (EPL). As gevolg van beperkte opgaringskapasiteit, word nuwe slikdamme en geassosieerde infrastruktuur benodig, en sluit die oprigting van die volgende in:

- Slikdam TD8 en TD9 op WPL;
- Konstruksie van nuwe pyplyne, en opgradering van bestaande pyplyne, vir die vervoer van sliks van bestaande konsentraataanlegte na die nuwe slikdamme;
- Pompstasies, en
- 'n Terugvloeidam.

Hierdie infrastruktuur sal toekomstige mynaktiwiteite by beide die EPL Mynregte Area, en WPL Mynregte Area ondersteun.

Lonmin is in besit van 'n goedgekeurde Omgewingsbestuursplan (OPB), soos vereis deur die Wet op die Ontwikkeling van Minerale en Petroleum Hulpbronne (MPRDA) (Wet 28 van 2002), vir beide WPL en EPL.

Voor Lonmin kan begin met die voorgestelde projek, moet die volgende aansoeke vir omgewingsmagtiging onderneem word:

- 'n Omgewingsimpakstudie (OIS), ingevolge die Wet op Nasionale Omgewingsbestuur (Wet Nr. 107 van 1998) (NEMA), wat by die Noord-Wes Provinsie se Departement van Ekonomie, Omgewing, Bewaring en Toerisme ingedien sal word;
- OBP wysiging ingevolge MPRDA (Wet Nr. 28 van 2002), wat by die Noord-Wes Provinsie se Departement van Minerale en Petroleum Hulpbronne ingedien sal word; en
- Aansoek vir 'n Watergebruik Lisensie (WUL) (Wysiging van die Geïntegreerde Watergebruik Lisensie, IWUL), ingevolge die Nasionale Waterwet (Wet Nr. 36 van 1998 NWA).

Wie is Lonmin Platinum Myn?

Lonmin Platinum Myn (Lonmin) is 'n Suid-Afrikaanse Platinum Myn Maatskappy geleë in die Noord-Wes Provinsie. Lonmin is geregistreer op die Londen Aandelemarkt en op die Johannesburg aandelemarkt. Lonmin besit die grond en het mynregte om platinum te myn op die terrein wat vir die nuwe infrastruktuur voorgestel word.

SRK Consulting is deur Lonmin aangestel as die onafhanklike omgewingskonsultant om die omgewingsmagtigingsproses en die openbare deelname proses van die projek te onderneem.

Die doel van die Agtergrond Inligtingsdokument (AID) is om belanghebbende en geaffekteerde partye met inligting te voorsien rakende die voorgestelde projek en sy komponente, die omgewingsmagtigingsproses, asook hoe om by die proses betrokke te raak.

UITNODIGING OM KOMMENTAAR TE LEWER EN AS BELANGHEBBENDE EN GEAFFEKTEERDE PARTY TE REGISTREER

Indien u as belanghebbende en geaffekteerde party vir hierdie spesifieke projek wil registreer (Lonmin Platinum Mynprojek), meer inligting wil bekom, en/of om enige kwessies of besordhede te lug, vul asseblief die aangehegte Registrasie en Kommentaarvorm in en stuur dit aan die SRK Openbare Deelname Kantoor.

OPENBARE DEELNAME
Elna de Beer SRK Consulting Posbus 55291 Northlands 2116 Tel: +27(0)11 441 1111 Faks: +27(0)86 5061737 Epos: edebeer@srk.co.za

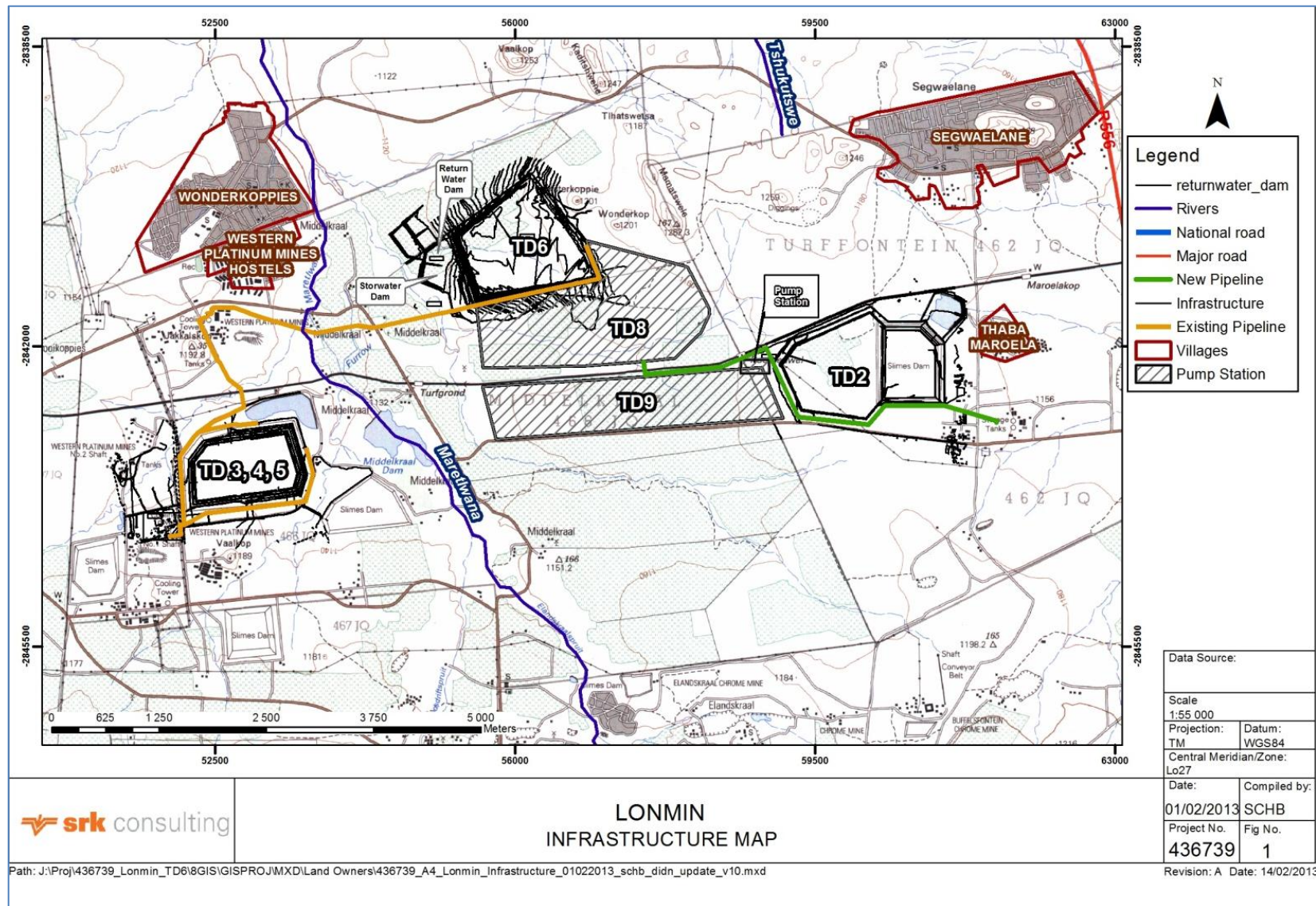
DIEN ASSEBLIEF U KOMMENTAAR IN EN REGISTREER AS BELANGHEBBENDE EN GEAFFEKTEERDE PARTY TEEN Vrydag, 19 April 2013



Figuur 1 Uitsig oor die voorgestelde Lonmin projek area

LIGGING VAN DIE VOORGESTELDE PROJEC

Die voorgestelde Lonmin Projek is ongeveer 4 km suidoos van Wonderkop in die Madibeng Plaaslike Munisipaliteit geleë, en val binne die Bojanala Distrik Munisipaliteit. Die projek is in die omgewing van die dorpe Wonderkop en Segwaelane geleë. (Sien Figuur 2)



Figuur 2: Streeksligging van die voorgestelde Lonmin Projek wat bestaande mynbedrywighede en komponente van die voorgestelde nuwe slikdamme en geassosieerde infrastruktuur

VOORGESTELDE PROJEEK

Lonmin beplan om twee nuwe sliksdamme te bou om te verseker dat voldoende opgraving beskikbaar is gedurende die leeftyd van die myn. Die projek behels ook die konstruksie van geassosieerde infrastruktuur soos pyplyne, pompstasies, dienspaaie en 'n terugvloeddam.

Die uitleg en komponente van die voorgestelde projek word in Figuur 2 geïllustreer, en sluit in:

- Konstruksie van twee nuwe sliksdamme, Westelike Platinum Sliksdam 8 (TD8) en Westelike Platinum Sliksdam 9 (TD9);
- Dienspad na die pyplyne en sliksdamme (grondpaaie sal binne die terrein gebou word en sal inskakel by die bestaande netwerk van mynpaaie);
- Rivierverlegging, suid van Westelike Platinum TD8;
- Herbekleding en uitbreiding van 'n bestaande terugvloeddam volgens die vereistes van die Departement van Waterwese;
- Uitbreiding van pyplyne van Rowland Konsentraataanleg na TD8;
- Konstruksie van pyplyne van Oostelike Platinum TD2 na Westelike Platinum TD8;
- Konstruksie van 'n voorgestelde pompstasie vir die vervoer van slik van TD2 na TD8; en
- Konstruksie van Oostelike Platinum Sliksdam 2 na UG2 Konsentraataanleg.

Sliksdam 8 word beplan aangrensend aan die huidige TD6, en sal uitendelik aansluit met TD6. TD9 word beplan aangrensend aan 'n huidige sleeppad suid van TD8. 'n Seisoenale stroom binne die huidige TD8 staanoppervlakte sal verlê moet word. Slik sal na die voorgestelde TD 8 gepomp word vanaf 1 SKAG UG2 Konsentraataanleg, via die Rowland-kompleks (in bestaande pyplyne wat uitgebrei en opgegradeer moet word). Slik sal ook van die EPL bedryfsarea gepomp word, via die TD2 pompstasie na die voorgestelde TD 8.

'n Addisionele pyplyn sal opgerig word vanaf TD2 na die UG2 Konsentraataanleg. Alle pyplyne benodig die oprigting van 'n pompstasie om slik te pomp, asook dienspaaie. Een van die dienspaaie sal die stroomverlegging kruis. Die voorgestelde TD 8 sal eerste ontwikkel word, gevolg deur die voorgestelde TD 9, wanneer nodig. Daar word beoog dat die afloop van beide die voorgestelde TD 8 and TD 9 in 'n bestaande terugvloeddam sal invloei. Die terugvloeddam sal herbeklee en uitgebrei word volgens die vereistes van die Nasionale Waterwet.

Wat is Slik?

Slik is die materiaal wat oorbly nadat waardevolle erts van minder waardevolle erts geskei is. Slik bestaan uit vergruisde afval minerale gemeng met water.

Projek tydlyne

Indien omgewingsmagtiging verleen word om met die voorgestelde projek voort te gaan, is die projek se verwagte tydlyne as volg:

- **Leef tyd van die myn = 50 jaar (tot 2067)**
- **Konstruksie = begin teen Julie 2014**
- **Eerste produksie = Desember 2015**

Terrien seleksie

Die terrein is gekies omrede dit naby die bestaande WPL TD6, EPL TD2 en die konsentraataanleg vir beide EPL and WPL geleë is. Boonop sal die voorgestelde sliksdamme en infrastruktuur geleë wees op grond wat aan die myn behoort (Tabel 1).

Tabel 1 Projek area deur grondporsies geïdentifiseer

Grondporsies	Grondporsies	Grondporsies
Middelkraal 466 JQ RE56	Middelkraal 466 JQ RE44	Middelkraal 466 JQ RE58
Middelkraal 466 JQ RE50	Middelkraal 466 JQ RE43	Middelkraal 466 JQ RE46
Middelkraal 466 JQ REe9	Middelkraal 466 JQ RE63	Middelkraal 466 JQ RE26
Middelkraal 466 JQ RE51	Middelkraal 466 JQ RE60	Middelkraal 466 JQ RE24
Middelkraal 466 JQ RE69	Middelkraal 466 JQ RE37	Middelkraal 466 JQ RE2
Middelkraal 466 JQ RE45		

Maatskaplike Arbeidsplan

Lonmin WPL en EPL het Maatskaplike en Arbeidsplanne wat deur die Department van die Ontwikkeling van Minerale en Petroleum Hulpbronne goedgekeur is. Die planne sal deel uitmaak van die OBP Aanvullingsdokument vir hierdie projek.

Gesondheid en Veiligheid

Die voorgestelde projek sal voldoen aan die vereistes van Lonmin se Kode van Praktisering vir sliksdamme, asook aan die vereistes van die Wet op Gesondheid en Veiligheid (Wet Nr. 29, 14 Junie 1996).

Omgewingsbestuur en Rehabilitasie

Wanneer omgewingsmagtiging verkry word ingevolge NEMA en MPRDA, sal monitoring plaasvind om te verseker dat die goedgekeurde OBP gedurende alle fases van die projek geïmplementeer word. Ingevolge die MPRDA, sal 'n prestasie-assessering elke twee jaar onderneem word om te bepaal of daar voldoen word aan al vereistes wat in die OBP vervat is (asook enige ander addisionele vereistes van die owerhede). 'n Rehabilitasieplan (vir die sliksdamme en geassosieerde myn-infrastruktuur) word ontwikkel vir mynsluiting wat vir 2060 beplan word. Progressiewe rehabilitasie beplanning word beklemtoon.

Water en Elektrisiteitsbehoefes

Die myn sal die water en elektrisiteitsbehoefes vir TD8 en TD9, en geassosieerde infrastruktuur verskaf. Die beraamde behoeftes van die projek sal in ag geneem word in die OIS en spesialisstudies.

Afvalbestuur

Huishoudelike en gevaarlike afval sal gedurende die konstruksiefase van die sliksdamme geproduseer word en sal tydelik op die terrein gestoor word, volgens die myn se bestaande bestuursprosedures. Afval sal deur kontrakteurs verwyder word en sal by 'n gelisensieerde stortingsfasiliteit gestort word.

OMGEWINGSMAGTIGING

OIS (NEMA goedkeuring)

Die OIS vir die voorgestelde TD8 and TD9 word onderneem ingevolge NEMA, Wet Nr. 107 van 1998 en die MPRDA, Wet Nr. 28 van 2002. Die twee prosesse sal parallel uitgevoer word, en alle dokumentasie sal aan die vereistes van beide wette voldoen.

Die OIS bestaan uit drie fases (Sien Figuur 3).

Omvangbepalingsfase

Kwessies wat gedurende die impakstudiefase ondersoek moet word, word in hierdie fase geïdentifiseer en die omvang van benodigde studies word hier bepaal. Hierdie inligting word in 'n Konsep Omvangbepalingsverslag saamgevat en sal vir openbare kommentaar beskikbaar gestel word. Nadat kommentaar van belanghebbende partye verkry is, word die verslag gefinaliseer en ingedien by die owerhede vir besluitneming rakende die res van die OIS proses.

Impakbepalingsfase

Gedurende die impakbepalingsfase sal potensiële impakte bepaal word en beheermaatreëls sal voorgestel word om negatiewe impakte teen te werk en positiewe impakte te versterk. Die OIS en OBP verslag sal opestel word en vir openbare kommentaar beskikbaar gestel word. Daarna sal die verslag gefinaliseer word en by die DMR (vir MPRDA) en DEDECT (vir NEMA) ingehandig word, wat in oorleg met ander owerhede op nasionale, provinsiale en plaaslike vlak 'n besluit sal neem oor die voorgestelde projek.

OBP (MPRDA goedkeuring)

Een OIS en OBP verslag sal aan die vereistes van MPRDA en NEMA voldoen.

WULA (NWA goedkeuring)

'n Watergebruik Lisensie wysigingsaansoek (WULA) sal ingedien word en vervat die volgende:

- Uitbreiding van die bestaande slikdam en terugvloeddam;
- Nuwe slikdam en geassosieerde terugvloeddam;
- Riviervlegging vir die uitbreiding van die slikdam; en
- Twee slik pyplyn-riviervleggings vir 'n nuwe pyplyn.

Openbare deelname

Hierdie proses bied belanghebbende partye die geleentheid om meer uit te vind oor die projek, om besorgdhede te opper, en om voorstelle te maak vir beter projekvoordele. Die tegniese spesialiste en projekspan sal relevante kwessies en voorstelle tydens die OIS evalueer. Alle nie-tegniese dokumente sal vir openbare kommentaar beskikbaar wees in Engels, Afrikaans, Setswana en Xhosa. Figuur 3 bied 'n oorsig oor die openbare deelname aktiwiteite wat deel uitmaak van die omgewingsmagtigingsproses.

Potensiële impakte en voorgestelde spesialisstudies

Potensiële omgewingsimpakte sluit in:

- Kulturele erfenis;
- Stroomvlegging;
- Generering van stof;
- Verlies aan biodiversiteit;
- Besoedeling van grondwater en oppervlakwater, deur middel van slik en pyplyne;
- Gronderosie en grondbesoedeling as gevolg van konstruksie en bedryfstoeistande.

U KOMMENTAAR IS BELANGRIK

U kommentaar op die voorgestelde projek, insluitende die openbare deelname proses en tegniese kwessies wat ondersoek moet word, sal help om die tegniese studies te fokus, en sal die owerhede bystaan in die besluitnemingsproses.

OMGEWINGSMAGTIGING EN GEASSOSIEERDE OPENBARE DEELNAME PROSES



Figuur 3 Omgewingsmagtiging en geassosieerde openbare deelname proses

OMGEWINGSMAGTIGINGS EN WYSIGING VAN DIE
 OMGEWINGSBESTUURSPROGRAM VIR DIE VOORGESTELDE NUWE
 SLIKDAMME EN GEASSOSIEERDE INFRASTRUKTUUR BY LONMIN
 WESTELIKE PLATINUM MYN EN OOSTELIKE PLATINUM MYN,
 NOORD-WES PROVINSIE
 DEDECT Nr: NWP/EIA/08/2012
 DMR Nr: WPL: ML 8/95 & DMR Nr: EPL: ML 3/96

REGISTRASIE EN KOMMENTAARVORM

Aangeheg by Agtergrond Inligtingsdokument
 Maart 2013

SRK Consulting
 OPENBARE DEELNAME KANTOOR
 Elna de Beer / Shannon du Plessis
 Openbare Deelname Kantoor
 SRK Consulting
 Posbus 55291, Northlands, 2116
 Tel: (011) 441 1111
 Faks: 086 5061737
 e-pos: edebeer@srk.co.za
 e-pos : sduplessis@srk.co.za

Vul asseblief in en dien u kommentaar by die Openbare Deelname Kantoor in teen Vrydag, 19 April 2013

TITEL		NAAM	
VOORLETTERS		VAN	
ORGANISASIE			
POSADRES			POSKODE
LANDLYN TEL NR		SEL NR	
FAKS NR		E-POS	

REGISTRASIE AS 'N BELANGHEBBENDE EN GEAFFEKTEERDE PARTY (merk die blok van toepassing met X)

Registreer my asseblief formeel as 'n belanghebbende en geaffekteerde party om sodoende verdere inligting en kennisgewings gedurende die OIS proses te kan ontvang	JA	NEE
Ek verkies my kennisgewings deur middel van:		
Brief (pos)	E-pos	Faks
		Telefoon
Ek sal graag dokumente as volg ontvang:		
Papier kopieë	Deur E-pos	Op Kompakskyf
Ingevolge GNR 543 (OIS regulasies) maak ek enige direkte besigheid, finansiële, persoonlike of ander belange wat ek mag hê in die goedkeuring of weiering van die aansoek bekend:		
.....		
.....		

KOMMENTAAR (gebruik asseblief aparte blaaie indien nodig)

Die volgende omgewings-, sosiale- en -ekonomiese kwessies moet gedurende die OIS/OBP proses aangespreek word:

.....

My kommentaar op die tegniese- en -openbare deelname prosesse is as volg:

.....

Enige ander kommentaar:

.....

Sluit asseblief die volgende persone as belanghebbende en geaffekteerde partye op u databasis in:

.....

DANKIE VIR U BYDRAE

NAAM:

HANDTEKENING:

DATUM: