



11 March 2013

Obekekileyo

**ISIMEMO SOKUBHALISA NOKUTHABATHA INXAXHEBA: UGUNYAZISO LWEZENDALO NESIHLOMELO SENKQUBO YOLAWULO LWENDALO YE- AMADAMA EENTSALELA ZEZIMBIWA KUNYE NAMASEKO ANXULUMENEYO KUMGODI WEPLATINAM KWINTSHONA NEMPUMA YE-LONMIN, KWIPHONDO LOMNTLA-NTSHONA**

**Inombolo ye DEDECT: NWP/EIA/08/2012**

**Inombolo yokukhangela DMR WPL: ML 8/95 & DMR Ref No for EPL: ML 3/96**

- **Ukufumaneka koXwebhu loLwazi loMlandu (BID) ukunikeza izimvo**
- **Isimemo sokubhalisa njengeqela eliNomdla neliChaphazelekayo**
- **Amanyathelo alandelayo kwinkqubo yoGunyaziso lwezeNdalo**

Qela eliNomdla neliChaphazelekayo elibekileyo

ILonmin Platinum Mine (Lonmin) isebenza njengeWestern Platinum Limited (WPL) ne-Eastern Platinum Limited (EPL). ILonmin ifuna ukwanda kummandla weLungelo lokuMba le-WPL ngenxa yomthamo wokugcina onganlanga weziseko zeentsalela zezimbiwa zazo ezikhoyo kwaye ke ngoko, iziseko zokugcina iintsalela zezimbiwa ezintsha ziyafuneka ukuvumela imisebenzi yokumba yexesha elizayo. Ukongeza, amaseko akhoyo anjengoluhlu lwemibhobho nezitishi zeempompo ziyafuneka ukuhambisa iintsalela zezimbiwa ukusuka kwiDama leeNtsalela zezimbiwa ze-EPL 1 ukuya kwisiHluzi sezimbiwa i-1 SHAFT UG2, ukusuka kwisiHluzi sezimbiwa i-UG2 ukuya kwisiHluzi sezimbiwa i-Rowland, isiHluzi sezimbiwa i-Rowland ukuya kwi-TD 6 kunye ne-TD8 neTD9 ezindululweyo, kwaye ulwandiso loluhlu lwemibhobho kufuneka lwenziwe ukusuka kwi-TD2 ukuya kwi-TD8 kwiziseko ezindululweyo ezitsha zeentsalela zezimbiwa, zibizwe ngokuba iDama leeNtsalela zezimbiwa 8 (Tailings Dam 8) (TD 8) ne-TD 9. Iziseko ezitsha ze-TD8 ne-TD9 ziza kunikeza indawo yogcino lweentsalela zezimbiwa zemimandla yeLungelo lokuMba le-WPL ne-EPL zombini.

IProjekthi yeLonmin endululweyo imi malunga ne-4 km kumzantsi-mpuma weWonderkop. Ikwindawo kaMasipala weNgingqi waseMadibeng kwaye ingena kuMasipala weSithili saseBojanala. Ummandla weprojekthi ukufuphi neLokishi yaseWonderkop neLokishi yaseSegwaelane

Iikhomponenti zeprojekthi endululweyo zezi:

- **Ukwenziwa kweziseko zokugcina iintsalela zezimbiwa iDama leeNtsalela zezimbiwa le-WPL 8 (TD8) neDama leeNtsalela zezimbiwa le-WPL 9 (TD9).**
- **Ukulungiswa kwendlela ukulungiselela ukulungiswa koluhlu lwemibhobho namadama eentsalela zezimbiwa (iindlela zegrabile ziza kwenziwa ngaphakathi kwesiza kwaye ziza kudityaniswa**

Partners J.C.J. Boshoff, A.H. Bracken, M.J. Braune, J.M. Brown, C.D. Dalgliesh, J.R. Dixon, D.M. Duthe, B.M. Engelsman, R. Gardiner, T. Hart, G.C. Howell, W.C. Joughin, P.R. Labrum, D.J. Mahlangu, R.R.W. McNeill, H.A.C. Meintjes, J.A. Middleton, M.J. Morris, W.A. Naismith, G.P. Nel, V.S. Reddy, P.N. Rosewame, P.E. Schmidt, P.J. Shepherd, V.M. Simposya, A.A. Smithen, K.M. Uderstadt, D.J. Venter, M.L. Wertz, A. Wood

Directors A.J. Barrett, J.R. Dixon, P.R. Labrum, D.J. Mahlangu, V.S. Reddy, P.E. Schmidt, P.J. Shepherd

Associate Partners D.J.D. Gibson, M. Hirsch, D.A. Kilian, S.A. McDonald, M. Ristic, M.J. Sim, J.J. Slabbert, H.F.J. Theart, D. Visser, D.P. van den Berg, M.D. Wanless

Consultants A.C. Burger, B.Sc.(Hons); I.S. Cameron-Clarke, PrSciNat, M.Sc.; J.A.C. Cowan, PrSciNat, B.Sc.(Hons); J.H. de Beer, PrSci Nat, M.Sc.; G.A. Jones, PrEng, Ph.D.; T.R. Stacey, PrEng, D.Sc.; O.K.H. Steffen, PrEng, Ph.D.; P.J. Terbrugge, PrSciNat, M.Sc.; D.W. Warwick, PrSciNat, B.Sc.(Hons)

SRK Consulting (South Africa) (Pty) Ltd

Reg No 1995.012890.07

**African Offices:**

Cape Town	+ 27 (0) 21 659 3060
Durban	+ 27 (0) 31 279 1200
East London	+ 27 (0) 43 748 6292
Johannesburg	+ 27 (0) 11 441 1111
Kimberley	+ 27 (0) 53 861 5798
Pietermaritzburg	+ 27 (0) 33 345 6311
Port Elizabeth	+ 27 (0) 41 509 4800
Pretoria	+ 27 (0) 12 361 9821
Rustenburg	+ 27 (0) 14 594 1280
Accra	+ 23 (3) 24 485 0928
Harare	+ 263 (4) 49 6182
Lubumbashi	+ 243 (0) 81 999 9775

**Group Offices:**

Africa  
Asia  
Australia  
Europe  
North America  
South America



nothungelwano lwendlela yomgodi ekhoyo).

- Uphambukiso lwemilambo, emzantsi we-WPL TD8
- Ukumiswa kwakhona nokwandiswa kwedama lamanzi abuyayo, ngokweemfuno ze-DWA;
- Ukwandiswa koluhlu lwemibhobho kwisiHluzi sezimbiwa i-Rowland ukuya kwi-TD8;
- Ukwenziwa koluhlu lwemibhobho ukusuka kwi-EPL TD2 ukuya kwi-WPL TD8; kunye
- Ukwenziwa kwesikhululo seempompo esindululweyo sokuhanjiswa kweentsalela zezimbiwa ukusuka kwi-TD2 ukuya kwi-TD8.
- Ukwenziwa koluhlu lwemibhobho ukusuka kwiDama leeNtsalela zezimbiwa 2 le-EPL ukuya kwisiHluzi sezimbiwa i-UG2.

ILonmin ineeNgxelo zeNkqubo yoLawulo lwezeNdalo ezamkelweyo (EMPR) ngokuthobela uMthetho woPhuhliso looVimba beziMbiwa nePetroliyam (Mineral and Petroleum Resources Development Act) (MPRDA) (uMthetho 28 ka-2002). Le EMPR luxwebhu olubophelela ngokusemthethweni, kwaye yandlala ngokucacileyo imisebenzi yokumba yeLonmin neemfuneko zolawulo lwezendalo kuMgodi wePlatinam okwiNtshona noMgodi wePlatinam okwiMpuma.

Phambi kokuba iLonmin iqalise iprojekthi endululweyo, ezi zicelo zogunyaziso lwezendalo zilandelayo kufuneka zenziwe:

- UHlobo lweMpembelelo yezeNdalo (i-EIA) ngokwayamene noMthetho woLawulo lwezeNdalo weSizwe (uMthetho No. 107 ka-1998) (i-NEMA);
- Isihlobo se-EMP ngokwayamene ne-MPRDA (uMthetho 28 ka-2002)
- Isicelo seLayisenisi yokuSetyenziswa kwaManzi (i-WULA) (Isihlobo seLayisenisi yokuSetyenziswa kwaManzi eHlanganisiweyo) ngokwayamene noMthetho wezaManzi weSizwe (uMthetho No. 36 ka-1998) (i-NWA)

ILonmin iqeshe i-SRK Consulting njengeGosa loHlobo lwezeNdalo elizimeleyo ukuqhuba ugunyaziso lwezendalo nenkqubo yokubandakanya abachaphazelekayo abanxulumeneyo yezicelo ezilapha ngentla. Inkqubo iza kuhlangubezana neemfuneko ze-NEMA, MPRDA ne-NWA. Ugunyaziwe okhokelayo wekhomponenti le-NEMA leprojekthi liza kuba liSebe loPhuhliso loQoqosho, ezeNdalo, uLondolozo noKhenketho (Department of Economic Development, Environment, Conservation and Tourism) (DEDECT), kwiphondo loMntla-Ntshona. I-WULA iza kungeniswa kwiiOfisi zoMmandla zeSebe leMicimbi yezaManzi (Department of Water Affairs) (DWA) zePhondo loMntla-Ntshona nekhomponenti ye-MPRDA kwiiOfisi zoMmandla zeSebe looVimba beziMbiwa (Department of Mineral Resources) (DMR) zePhondo loMntla-Ntshona.

### ***Ubukho be-BID yezimvo zoluntu***

UXwebhu loLwazi lwe-**Background Information Document** (BID) luchaza iprojekthi yedama leeNtsalela zezimbiwa lase-Lonmin endululweyo kwaye lunikeza inkcazelo emfutshane yeenkqubo zogunyaziso lwezendalo. Lunikeza amaqela anomdla nachaphazelekayo (I&APs) ngethuba eliphampili lokunikeza izimvo ngeprojekthi endululweyo nokubhalisa njenge-I&AP. Amaxwebhu angaphaya aza kufumaneka kumanqanaba angaphaya enkqubo yogunyaziso. Izimvo zakho neengcebiso kuwo nawuphi na umba weprojekthi endululweyo, ukuqoka neenkqubo zokubandakanya ubuchule **technical** nabachaphazelekayo, kuza kunceda ukugxila kwizifundo zobuchwepheshe, kwaye ekugqibeleni kuza kunceda iziphathamandla ukuba zenze isigqibo.

I-BID iquka:

- Inkcazelo yeprojekthi endululweyo;
- Iinkqubo zigunyaziso lwezendalo nobandakanyo lwabachaphazelekayo emazilandelwe;
- Indlela abachaphazelekayo abanokubhalisa ngayo baze babandakanyeke kwinkqubo; kunye
- Nemiba yenkxalabo enokubakho yohlolo kwizifundo zobungcali.

I-BID, kunye neFom yoBhaliso nonikezo lweZimvo ehamba nalo, iza kufumaneka futhi ukuze uluntu lunikeze izimvo kwiiNdawo zikaWonkewonke ezidweliswe kwithebhile elapha ngezantsi.

**Table 1 liNdawo zikaWonke-wonke apho uXwebhu loLwazi BID luzakufumaneka khona**

Indawo kaWonke-wonke	Locality	Contact	Umnxeba
Lonmin Reception	Marikana	Hazel Fiehn	014 571 2182
EPL Hostel	Marikana	David Makhema	014 571 4439
EPL main offices	Marikana	Hanlie Ryan	014 571 2399
Wonderkop Hostel Offices	Marikana	Patrick Molise	014 571 3348
Lonmin Community Centre	Mooinooi	Elize Smith	014 571 4211
Bapo Ba Mogale Traditional Authority	Marikana	M Mphoreng	012 261 1500
Marikana Public Library	Marikana	R Motlhabane	014 572 3611
Madibeng Local Municipality	Van Velden Street, Madibeng	Reception	012 318 9500
Madibeng Public Library	Van Velden Street, Madibeng	Ina Annandale	012 318 9318
Rustenburg Local Municipality	C/o Beyers Naude & Mandela Str, RTB	Maletsi Mako	014 590 3551
Rustenburg Public Library	C/o Heystek & Thabo Mbeki, Rustenburg	Pieter Louw	014 590 3295
Bojanala District Municipality	C/o Beyers Naude & Fatima Bhayat Dr. RTB	Reception	014 590 4500

### **Isimemo sokubhalisa njenge-I&AP**

Uyamenywa ukuba ubhalise njengeqela elinomdla nelichaphazelekayo (I&AP) kule inkqubo ikhethekileyo yogunyaziso yezendalo, nika izimvo okanye uphakamise nawuphi na umba oyinkxalabo. Nceda ugcwalise iFom yeziMvo eqhotyoshelweyo uze uyibuyisele kwiOfisi yoBandakanyo lwabaChaphazelekayo ye-SRK

Wamkelekile ukunikeza izimvo nge-BID ngokuthi:

- Ugcwalise ifom yobhaliso neyezimvo efakiweyo uze uyingenise kwiofisi yobandakanyo lwabachaphazelekayo;
- Ubhale ileta okanye isingeniso esibhaliweyo esongezelelweyo ngeposi, i-imeyili okanye ifeksi; kunye
- Nokutsalela umnxeba kwiofisi yobandakanyo lwabachaphazelekayo.

Ngokweemfuno ezisemthethweni regulatory requirements, abachaphazelekayo baneentsuku ezingama-30 ukubhalisa njengee-I&AP kule projekthi. Nceda ungenise ubhaliso lwakho ngokugcwalisa ifom yobhaliso efakiweyo uze uyingenise kwiofisi yobandakanyo lwabachaphazelekayo kungadlulanga **Friday, 19 April 2013**.

### **Amanyathelo alandelayo kwinkqubo yoGunyaziso yezeNdalo**

Emva kokuba kubhengezwe iprojekthi endululweyo, iNgxelo yoYilo lweSikowupu (Draft Scoping Report) iza kufumaneka ukuze uluntu lunikeze izimvo. Abachaphazelekayo nee-I&AP baza kwaziswa ngemihla yokufumaneka kwale ngxelo kwakufutshane nje kwakunye nemizi evulelekileyo apho iNgxelo yoYilo lweSikowupu Draft Scoping Report iza kuthiwa theca khona kuze kuxoxwe ngayo.

Xa unokuthi ube nayo nayiphi na imibuzo, ufuna ulwazi oluthe vetshe, okanye unqwenela ukuphakamisa imiba yenkxalabo okanye iingcebiso, nceda uqhagamshelane no

**Elna de Beer – tel: +27 (0)11 441 1111/email: edebeer@srk.co.za /fax: + 27 (0)11 086 506 1737**

Enkosi ngegalelo lakho kule nkqubo yogunyaziso lwezendalo kwaye silangazelela ukudibana nawe kwakufutshane nje.

SRK Consulting - Certified Electronic Signature

 **srk consulting**  
436739/41338/Letter  
9657-476-3234-DEEL  
This signature has been printed digitally with the Author's permission for its use for this document. The details are stored in the SRK Signature Database

**ELNA DE BEER**

**Stakeholder Engagement Office: Lonmin's proposed Tailings dams Project**

# UGUNYAZISO LWEZENDALO LWAMADAMA EENTSALELA ZEZIMBIWA AMATSHA ANDULULWEYO NAMASEKO ANXULUMENEYO KUMGODI WEPLATINAM ILONMIN KWINTSHONA NAKWIMPUMA, KWIPHONDO LOMNTLA-NTSHONA

**INombolo ye-DEDECT: NWP/EIA/08/2012**  
**Inombolo yokuKhangela ye DMR:WPL: ML8/95**  
**Inombolo yokuKhangela ye DMR EPL: ML 3/96**

## UXwebhu loLwazi loMlandu nesiMemo sokuBhalisa er

March 2013

(Ifumaneka futhi ngeSetswana, isiXhosa nangesiAfrikansi)



## UMLANDU NENTSHAYELELO

ILonmin Platinum Mine (Lonmin) isebenza njengeWestern Platinum Limited (WPL) ne-Eastern Platinum Limited (EPL). Ngenxa yomthamo wokugcina onganelanga, iziseko ezintsha zokugcina iintsalela zezimbiwa namaseko anxulumeneyo ziyafuneka. Oku kuquka ukwenziwa:

- KweDama leeNtsalela zezimbiwa i-(TD) 8 ne-TD9 kwi-WPL
- Ukwenziwa koluhlu lwemibhobho emitsha nokuhlaziywa kwekhoyo ukuhambisa iintsalela zezimbiwa ukusuka kwizihluzi zezimbiwa ezikhoyo ukuya kumaDama amatsha eeNtsalela zezimbiwa
- Izitishi zeempompo, kunye
- Idama lamanzi abuyayo

Eli seko liza kuxhasa imisebenzi yokumba yexesha elizayo yoMmandla wamaLungelo okuMba emgodini we-EPL noMmandla wamaLungelo okumba emgodini we-WPL yomibini.

ILonmin inesiCwangciso soLawulo lwezeNdalo esamkelweyo (i-EMP) njengoko kufunwa nguMthetho woPhuhliso booVimba beziMbiwa/beeMinerali nabePetroliyam (i-MPRDA) (uMthetho 28 ka-2002)we-WPL ne-EPL zombini.

Lonmin has an approved Environmental Management Plan (EMP) as required by the Mineral and Petroleum Resources Development Act (MPRDA) (Act 28 of 2002) for both WPL and EPL.

Phambi kokuba iLonmin ibe nokuqalisa the proposed:

- UHlolo lweMpembelelo yezeNdalo (i-EIA) ngokwayamene noMthetho woLawulo lwezeNdalo weSizwe (uMthetho No. 107 ka-1998) (i-NEMA) kufuneka zingeniswe kwiSebe loPhuhliso loQoqosho, ezeNdalo, uLondolozo noKhenketho lephondo loMntla-Ntshona;
- Isihlomelo se-EMP ngokwayamene ne-MPRDA (uMthetho 28 ka-2002) singeniswe kwiSebe leMicimbi yeziMbiwa loMmandla wePhondo laseMntla Ntshona; kunye

### Ngubani uMgodi wePlatinam waseLonmin?

UMgodi we Platinam waseLonmin (iLonmin) yiNkampani yePlatinam yaseMzantsi Afrika emi kwiPhondo loMntla-Ntshona. ILonmin ibhaliswekwi-London stock exchange. ILonmin ingumnini womhlaba kwaye inamalungelo okumba emgodini ukumba iplatinam kwisiza esindululelwe amaseko amatsha.

- NesiCelo seLayisenisi yokuSetyenziswa kwaManzi (i-WUL) (isiHlomelo kwiLayisenisi yokuSetyenziswa kwaManzi eHlanganisiweyo i-IWUL) ngokwayamene noMthetho wezaManzi weSizwe (uMthetho No. 36 ka-1998 i-NWA). iprojekthi endululweyo, ezi zicelo zilandelayo zogunyaziso lwezendalo kufuneka ziqhutywe.

ILonmin iqeshe i-SRK Consulting njengeGosa loHlolo lwezeNdalo elizimeleyo ukuqhuba inkqubo yogunyaziso lwezendalo nokubandakanywa okunxulumeneyo kwabachaphazelekayo.

Injongo yolu Xwebhu loLwazi loMlandu (i-BID) kukunikeza amaQela anoMdlala naChaphazelekayo (ii-I&AP) ngolwazi malunga neprojekthi endululweyo neekhomponenti zayo, inkqubo yolawulo nendlela yokubandakanyeka kule nkqubo.

## **ISIMEMO SOKUNIKA IZIMVO NOKUBHALISA NJENGEQELA ELINOMDLA NELICHAPHAZELEKAYO**

Xa unokuthi unqwenele ukubhalisa njengeqela elinomdla nelichaphazelekayo kule nkqubo yogunyaziso lwezendalo ekhethekileyo (oko kutsho iProjekthi yoMgodi wePlatinam yaseLonmin), ucele ulwazi olungaphaya, kwaye / okanye uphakamise imiba okanye izimvo, nceda ugcwalise eli Phetshana loBhaliso nelokunikezwa kweziMvo uze ulibuyisele kwiOfisi yoBandakanyeko lwabaChaphazelekayo ye-SRK.

**UBANDAKANYEKO LWABACHAPHAZELEKAYO**

Elna de Beer  
**SRK Consulting**  
 P O Box 55291  
 Northlands  
 2116  
Umnxeba :+27(0)11 441 1111 Fax: +27(0)86  
 5061737  
 I-imeyili : edebeer@srk.co.za

## **NCEDA UNGENISE IZIMVO ZAKHO NOBHALISO NJENGEQELA ELINOMDLA NELICHAPHAZELEKAYO UNGADLULANGA UMHLA, FRIDAY 19 APRIL 2013**



**Umfanekiso 1 Jonga ummandla weprojekthi endululweyo yaseLonmin**

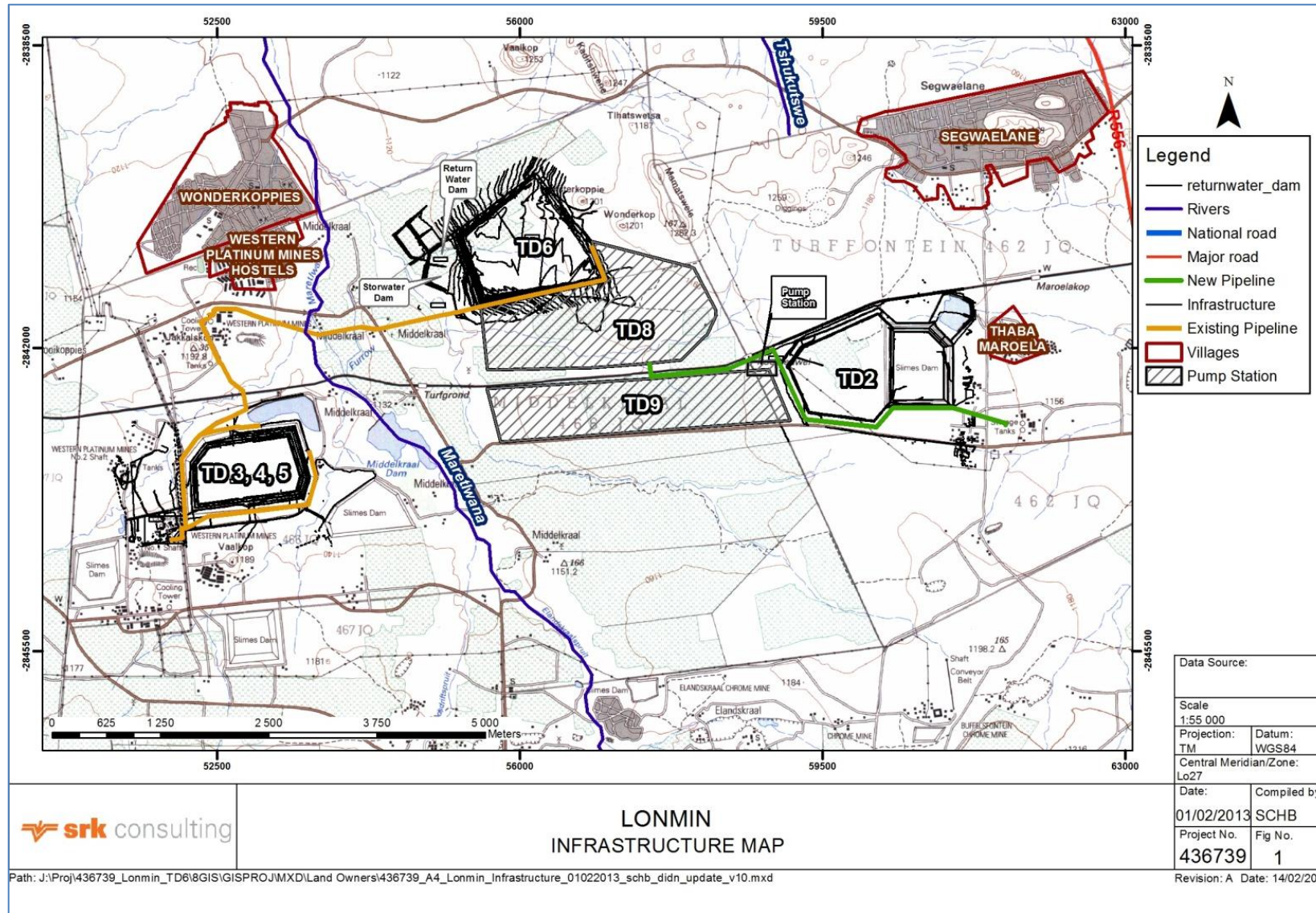
---

## INDAWO EKUYO IPROJEKTHI ENDULULWEYO

---

Projekthi yeLonmin endululweyo imi malunga ne-4 km kumzantsi-mpuma weWonderkop. Ikwindawo kaMasipala weNgingqi waseMadibeng kwaye ingena kuMasipala weSithili saseBojanala. Ummandla weprojekthi ukufuphi neLokishi yaseWonderkop neLokishi yaseSegwaelane (Jonga umfanekiso 2).





Umfanekiso 2 Ukumiswa ngokwemimandla kweprojekthi yaseLonmin endululweyo ebonisa imisebenzi esele isenziwa nenxalenye yamadama amatsha eentsalela zezimbiwa andululweyo namaseko anxulumeneyo



## IIPROJEKTHI ENDULULWEYO

ILonmin indulula ukwakha amadama amatsha amabini eentsalela zezimbiwa ukuqinisekisa ukuba indawo yokugcina eyaneleyo ikhona kuko konke okwenzekayo emgodini. Oku kuza kubandakanya ukwakhiwa kwamaseko anxulumeneyo anje ngoluhlu lwemibhobho, izitishi zokumpompa, ukulungiswa kweendlela nokunxulumene namanzi abuyela edamini.

Uyilo nenxenye yeprojekthi endululweyo ziboniswe kuMfanekiso 2 kwaye ziquka:

- Ukwakhiwa kweziseko ezibini ezintsha zokugcina iintsalela zezimbiwa zeWestern Platinum Tailings Dam 8 (TD8) ne-Western Platinum Tailings Dam 9 (TD9);
- Ukulungiswa kweendlela ukulungiselela ukulungiswa koluhlu lwemibhobho namadama eentsalela zezimbiwa (iindlela zegrabile ziza kwenziwa ngaphakathi kwesiza kwaye ziza kudityaniswa nothungelwano lwendlela yomgodi ekhoyo).
- Uphambukiso lwemilambo, emzantsi we-WPL TD8 ;
- Ukumiswa kwakhona nokwandiswa kwedama lamanzi abuyayo, ngokweemfuno ze-DWA;
- Ukwandiswa koluhlu lwemibhobho kwisiHluzi sezimbiwa i-Rowland ukuya kwi-TD8;
- Ukwakhiwa koluhlu lwemibhobho ukusuka kwi- Eastern Platinum TD2 ukuya kwi-Western Platinum TD8; kunye;
- Ukwenziwa kwesikhululo sokumpompa esindululweyo sokuhanjiswa kweentsalela zezimbiwa ukusuka kwi-TD2 ukuya kwi-TD8;
- Ukwenziwa koluhlu lwemibhobho ukusuka kwiDama leeNtsalela zezimbiwa 2 le-EPL ukuya kwisiHluzi sezimbiwa i-UG2.

IDama 8 leeNtsalela zezimbiwa licwangcise ukuba libe kufuphi ne-TD6 ekhoyo kwaye liza kuthi ekugqibeleni lijoyine i-TD6 ngelixa i-TD9 icwangcise kufuphi nendlela yokuthutha ekhoyo emzantsi we-TD8. Kumhlaba we-TD8 endululweyo kukho umjelo wamaxesha athile onyaka oza kufuneka ujikwe. Iintsalela zezimbiwa ziza kumpontshelwa kwi-TD 8 endululweyo ukusuka kwisiHluzi sezimbiwa 1 SHAFT UG2, idlule ngakwisakhiwo iRowland apho apho kukho imibhobho efuna ukwandiswa nokulungiswa. Iintsalela zezimbiwa ziza kumpontshelwa ukusuka kwiintsebenzo ze-EPL zidlule kwisitishi sokumpompa i-TD2 ukuya kwi-TD 8 endululweyo. Uluhlu lwemibhobho eyongezelelweyo iya kwakhiwa ukusuka kwi-TD2 ukuya kwisiHluzi sezimbiwa i-UG2. Lonke uluhlu lwemibhobho luza kufuna kwakhiwe isitishi sokumpompa ngenjongo yokumpompa iintsalela zezimbiwa, nokulungiswa kweendlela, esinye sazo esiya kuthi sinqumle umjelo ophambukisiweyo. I-TD 8 endululweyo iza kwenziwa kuqala ize ilandelwe yi-TD 9 endululweyo xa kuyimfuneko. Ukuhamba kwamanzi ukusuka kwiTD 8 ne-TD 9 ezindululweyo zombini kucwangciselwe ukuba kuhambe ukuya kumanzi abuyela edamini eliya kuthi limiswe kwakhona kwaye landiswe ngokweemfuneko zoMthetho wezaManzi weSizwe.

### Ziintoni iintsalela zezimbiwa?

**Iintsalela zezimbiwa kokushiyekayo emva kwenkqubo yokuhlaza izimbiwa ezinexabiso eliphakamileyo neliphantsi iintsalela zezimbiwa zenziwa yintlenge yezimbiwa ecolekileyo exubene namanzi.**

### Isicwangciso sexesha seprojekthi timelines

**Xa ugunyaziso lwezendalo lunokuvumela ukuba iqhubeke iprojekthi endululweyo, amaxesha acwangcisiweyo aqikelelwayo ngala:**

- **Ixesha lokusebenza komgodi = iminyaka engama 50 (de kube ngama-2067)**
  - **Ukwakhiwa = kuqaliswa ngo Julayi 2014**
  - **Imveliso yokuqala = Disemba 2015**

### Ukuchongwa kwesiza

Isiza esikhethiweyo sachongwa kuba sikufutshane nee-WPL TD6, EPL TD2 ezikhoyo nezihluzi zezimbiwa ze-EPL ne-WPL zombini. Ukongeza, iziseko zeentsalela zezimbiwa ezindululweyo kwanamaseko ziya kubakwiipropati zomgodi (Itheyibhile 1).



## **Itheyibhile 1 Umandla weprojekthi ochongwe ngokwezahlulo zomhlaba**

<b>Izahlulo zomhlaba</b>	<b>Izahlulo zomhlaba</b>	<b>Izahlulo zomhlaba</b>
Middelkraal 466 JQ 56	Middelkraal 466 JQ 44	Middelkraal 466 JQ Re58
Middelkraal 466 JQ 50	Middelkraal 466 JQ 43	Middelkraal 466 JQ 46
Middelkraal 466 JQ Re9	Middelkraal 466 JQ 63	Middelkraal 466 JQ 26
Middelkraal 466 JQ Re51	Middelkraal 466 JQ 60	Middelkraal 466 JQ 26

### ***IsiCwangciso semiSebenzi yoluNtu (Social Labor Plan)***

ILonmin WPL ne-EPL zineziCwangciso zemiSebenzi yoLuntu (SLP) ezamkelweyo liSebe leMicimbi yeziMbiwa (i-DMR). Ezi SLPs ziza kuba yinxalenye yoxwebhu lwesiHlomelo se-EMPR yale projekthi.

### ***IMpilo noKhuseleko***

Iprojekthi endululweyo iza kuthobela iimfuneko zeNdlela yokuSebenza yaseLonmin zamadama eentsalela zezimbiw njengexalenye yeemfuneko zoMthetho No. 29 weMpilo noKhuseleko, 14 Juni 1996.

### ***ULawulo lwezeNdalo nokuBuyisela uMhlaba kwiMeko yawo yesiQhelo (Rehabilitation)***

Ukuba nje ugunyaziso lwezendalo lufunyanwe ngokwayamene ne-NEMA ne-MPRDA zombini, kuza kubekwa iliso ukuqinisekisa ukuba i-EMPR eyamkelweyo iyaphunyezwa kuzo zonke izigaba zeprojekthi. Ngokwayamene ne-MPRDA, uhlolo lokusebenza luza kwenziwa kanye kwiminyaka emibini rhoqo ukuhlola ukuthobela iimeko eziqulethwe kwi-EMPR kunye neemfuneko ezongezelelweyo ezinokubakho ezisuka koogunyaziwe. IsiCwangciso sokuBuyisela uMhlaba kwimeko yawo yesiQhelo (samadama eentsalela zezimbiwa namaseko okumba umgodi anxulumeneyo) siveliselwe ukuvalwa komgodi okucwangciselwe 2060. Isicwangciso sokubuyisela umhlaba kwisiqhelo sawo esiqhubekayo siyagxininiswa kwesi sicwangciso.

### ***Iimfuneko zaManzi noMbane***

Iimfuneko zamanzi nombane ze-TD8 ne-TD9 namaseko anxulumeneyo ziza kufumaneka eMgodini. Iimfuneko eziqulelweyo njengoko kumiselwe liqela leprojekthi ziza kuthathelwa ingqalelo kwi-EIA nezifundo zobungcali ezinxulumeneyo.

### ***ULawulo lweNkunkuma***

Inkunkuma yasekhaya naleyo iyingozi iza kuveliswa kwisigaba sokwakhiwa kwamadama eentsalela zezimbiwa kwaye ziza kugcinwa okwexeshana kwisiza ngokuphathelene neenkqubo zolawulo lwenkunkuma olukhoyo. Yonke inkunkuma iza kususwa ziikontraka ize ilahlelwe kwiziseko zokulahlela inkunkuma ezinelayisenisi.

---

## **UKWAMKELWA KWEZENDALO**

---

### ***I-EIA (ukwamkelwa kwe-NEMA)***

I-EIA ye-TD8 ne-TD9 eyamkelweyo iyaqhutywa ngokwayamene ne-NEMA, uMthetho No. 107 ka-1998 ne-MPRDA, uMthetho No 28 ka-2002. Ezi nkqubo zombini ziza kuqhuba ngexesha elinye kwaye onke amaxwebhu aza kuhangabezana neemfuneko zeMithetho yomibini.

I-EIA inezigaba ezibini (Umfanekiso 3).

### ***Scoping phase***

Isigaba sokucwangcisa esipheleleyo senkqubo yonke – ngexesha lesi sigaba, imiba yophando ngexesha lesigaba sohlolo lwempembelelo yenkqubo iyachongwa kwaye ukucwangciswa kwezifundo kuchazwe. Olu

Iwazi luyaqulunqwa lube luYilo lweNngxelo yokuCwangcisa (Draft Scoping Report), kwaye luza kufumaneka ukuze uluntu lunike izimvo. Ukuba nje izimvo kwinkqubo yobandakanyo lwabachaphazelekayo zifumaneka, ingxelo yokucwangcisa iza kugqityezelwa ize ingeniswe koogunyaziwe abafanelekileyo ukuze kwenziwe isigqibo ngokuphathelene nenkqubo eshiyekileyo ye-EIA.

### ***Impact assessment phase***

Isigaba sohlolo lwempembelelo nochaphazeleko lwenkqubo – ngexesha lesigaba sohlolo lwempembelelo nochaphazeleko, iimpembelelo ezinokubakho ziya miselwa kuze kundululwe amanyathelo okuzilawula ukunqanda okanye ukunciphisa iimpembelelo ezinxaxhileyo kuze komelezwe iimpembelelo ezilungileyo. INgxelo ye-EIA ne-EMP ziza kwenziwa zize zenziwe zifumaneka ukuze uluntu lunike izimvo. Ingxelo iza kugqityezelwa ize ingeniswe kwi-DMR (phantsi kwe-MPRDA) ne-DEDECT (phantsi kwe-NEMA), eya kuthi ngokubonisana nabanye oogunyaziwe kumanqanaba kandlunkulu, ephondo nawengingqi yenze isigqibo ngeprojekthi endululweyo.

### ***I-EMP (ukwamkelwa kwe-MPRDA)***

Ingxelo enye ye-EIA ne-EMP iza kubhalwa ukuquka iimfuno ze-MPRDA neze-NEMA zombini.

### ***I-WULA (ukwamkelwa kwe-NWA)***

Isicelo sesihlomelo seLayisenisi yokuSetyenziswa kwaManzi (i-WULA) siza kungeniswa kwaye siquka oku kulandelayo:

- Ukwandiswa kwedama leentsalela zezimbiwa nelamanzi abuyela edamini
- Idama elitsha leentsalela zezimbiwa nedama lamanzi abuyiswayo elinxulumeneyo
- Uphambukiso lomlambo lokwandisa idama leentsalela zezimbiwa
- Uluhlu lwemibhobho emibini yeentsalela zezimbiwa enqumla umlambo ukulungiselela uluhlu lwemibhobho emitsha

### ***Ukubandakanywa kwabachaphazelekayo***

Le nkqubo inikeza abachaphazelekayo ithuba lokufunda malunga neprojekthi, ukuphakamisa imiba abanenxalabo ngayo, nokunika iingcebiso zeenzuzo zeprojekthi eziphuculweyo. Iingcali zobuchwepheshe neqela leprojekthi baza kuhlola imiba efanelekileyo kwaneengcebiso ngexa lenkqubo ye-EIA. Onke amaxwebhu angengawobuchwepheshe okunikeza izimvo koluntu aza kufumaneka ngesiNgesi, isiAfrikansi, iSetswana nangesiXhosa. Umfanekiso 3 ukwanikeza inkcazelo emfutshane yemisebenzi yokubandakanywa kwabachaphazelekayo enxulumene nale nkqubo yogunyaziso lwezendalo.

### ***Iimpembelelo ezinokubakho nezifundo zobungcali ezindululweyo***

Iimvakalelo zezendalo ezinokubakho ziquka:

- Iimpembelelo kumafa enkubeko
- Ukuphambukiswa kwamajelo
- Ukuveliswa kothuli
- Ukuphulukana nezityalo nezilwanyana ezohlukeneyo
- Ungcoliso lwamanzi aphuma ngaphantsi komhlaba naphuma ngaphezulu olubangelwa ziintsalela zezimbiwa noluhlu lwemibhobho.
- Ukhukhuliselo lomhlaba nongcoliseko lomhlaba ngenxa yeemeko zokwakha nezemisebenzi eyenziwayo

---

## ULUVO LWAKHO LUBALULEKILE

Izimvo zakho ngale projekthi indululweyo, ukuquka nenkqubo yokubandakanywa kwabachaphazelekayo nemiba yobuchwepheshe ekufuneka iphandiwe, ziza kunceda ekugxilweni kwizifundo zobuchwepheshe, nokunceda oogunyaziwe ekuthatheni kwabo izigqibo.

---

# ENVIRONMENTAL AUTHORISATION AND ASSOCIATED STAKEHOLDER ENGAGEMENT PROCESS

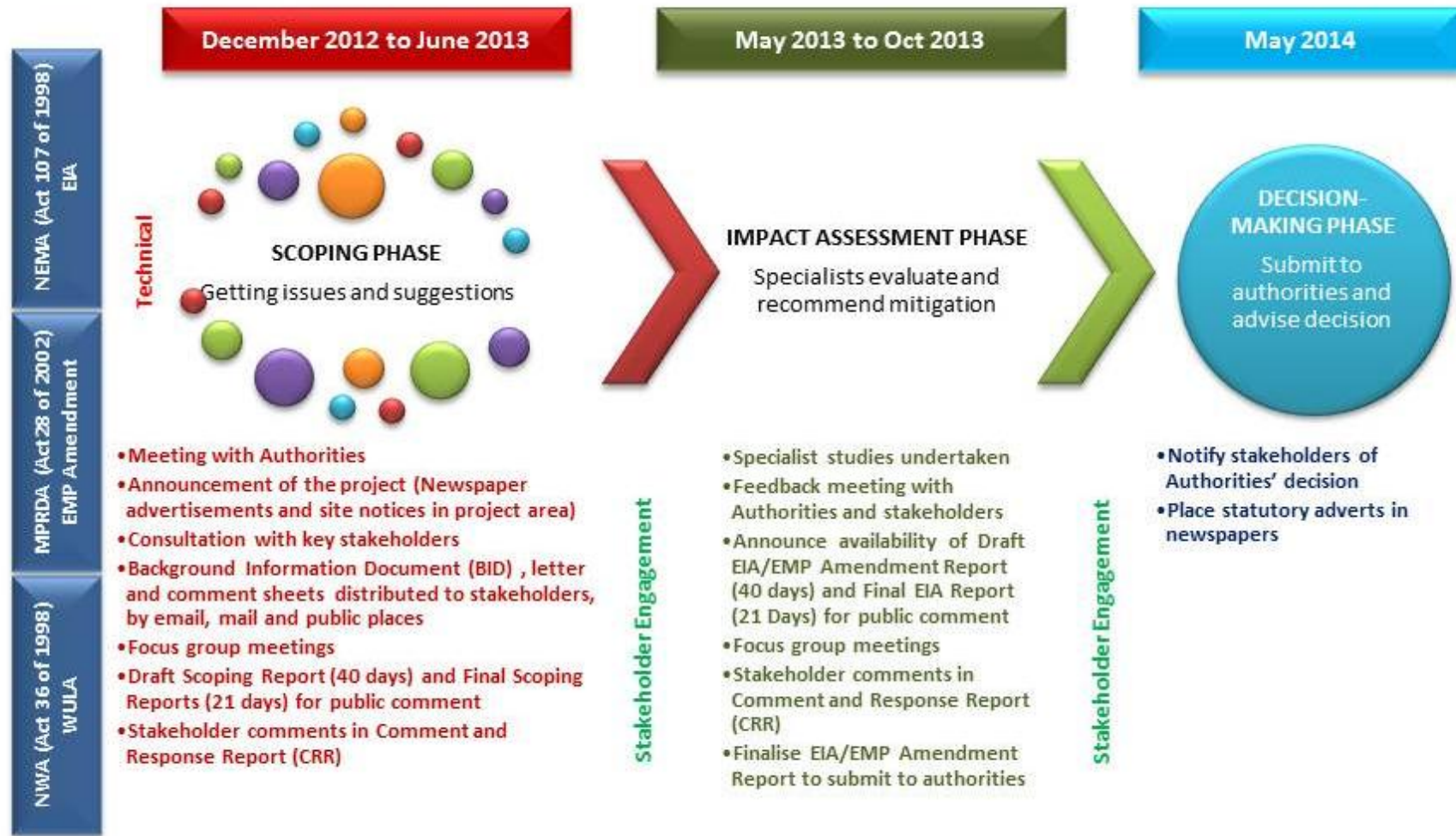


Figure 1 Environmental Authorisation and associated stakeholder engagement process

UGUNYAZISO LWEZENDALO LWEZISEKO ZOKUGCINA ZEENTSALELA  
 ZEZIMBIWA EZINTSHA EZINDULULWEYO (i-TD8 ne-TD9) NAMASEKO  
 ANXULUMENEYO KUMGODI ILONMIN WEPLATINAM KWINTSHONA  
 NAKUMGODI WEPLATINAM KWIMPUMA, KWIPHONDO LOMNTLA-  
 NTSHONA

Inombolo I-DEDECT: NWP/EIA/08/2012  
 DMR yoMgodi wePlatinam kwiNtshona: ML 8/95  
 DMR yoMgodi wePlatinam kwiMpuma: ML 3/96

**IPHETSHANA LOBHALISO NELEZIMVO**  
 Matshi 2013

SRK Consulting  
 STAKEHOLDER ENGAGEMENT  
 OFFICE

Elna de Beer  
 Stakeholder Engagement Office  
 SRK Consulting  
 P O Box 55291, Northlands, 2116

Umnxeba: (011) 441 1111  
 Ifeksi: 086 5061737  
 I-imeyili: [edebeer@srk.co.za](mailto:edebeer@srk.co.za)

**Nceda ugcwalise uze ungenise izmvo kwiOfis yoBandakanyo lwabChaphazelekayo ungadlulanga umhla we Friday, 19 April 2013**

ITAYITILE		IGAMA LOKUQALA	
OONOBUMBA BOKUQALA BAMAGAMA		IFANI	
IQUMRHU			
IDILESI YEPOSI			
		IKHOWUDI YEPOSI	
INOMBOLO YOMNxeba WASENDLWINI		INOMBOLO YESELI	
INOMBOLO YEFEKSI		I-IMEYILI	

**UBHALISO NJENGEQELA ELINOMDLA NELICHAPHAZELEKAYO (I&AP) (nceda uphawule ibhokisi efanelekileyo ngo-X)**

Nceda undibhalise ngokusesikweni njengeqela elinomdla nelichaphazelekayo (I&AP) ukuze ndikwazi ukufumana ulwazi olungaphaya nezaziso ngexesha lenkqubo ye-EIA	<b>EWE</b>	<b>HAYI</b>
<b>Izaziso zam ndizifuna ngalendlela:</b>		
Incwadi (iposi)	I-imeyili	Ifeksi
<b>Ndingathanda ukufumana amaxwebhu okunikeza izimvo ngale ndlela ilandelayo:</b>		
likopi zamaphepha	Ngeimeyili	Kwi-CD
Ngokwayamene ne-GNR 543 (Imimiselo ye-EIA) ndibhengeza apha ngezantsi naluphi na ushishino olungqalileyo, olwemali, olobuqu okanye nawuphi na umdla endinokuba nawo kulwamkelo okwanye ukwaliwa kwesicelo		

**IZIMVO** (nceda usebenzise amaphepha awohlukeneyo ukuba unqwenela njalo)

Le miba ilandelayo yezendalo, yoluntu neyoqoqoqsho kufuneka kujongwane nayo ngexesha lale nkqubo yesiHlomelo se-EIA/EMP:

Uluvo lwam kwiinkqubo zobandakanyo lobuchule nabachaphazelekayo lolu lulandelayo:

Nceda yongeza aba bantu balandelayo njengee-I&AP kwidathabheyisi yakho:

	<b>ENKOSI NGEGALELO LAKHO</b>	
<b>IGAMA</b>	<b>USAYINO</b>	<b>UMHLA:</b>





11 Tlhakole 2013

Wena yo o rategang

**TALETSO YA GO IKWADISA LE YA GO NNA LE SEABE/TSAYA KAROLO: DITHULAGANYETSO TSA TIKOLOGO GAPE THULAGANYO YA TLHABOLOLO YA BOTSAMAISI JWA TIKOLOGO TSA MATAMO A MANTŠHWA A DITHAILING A A TLHAGISITSWENG GA MMOGO LE DITHULAGANYESO TSE DI TSAMAELANANG LE ONA KWA BOPHIRIMA JWA MOEPO WA POLATINAMO, 'WESTERN PLATINUM MINE' LE WA POLATINAMO MO BOTLHABA, EASTERN PLATINUM MINE, MO POROFENSENG YA BOKONE BOPHIRIMA**

**Nomere ya DEDECT: NWP/EIA/08/2012**

**Nomere e e tthagiso:DMR WPL: ML 8/95 & DMR EPL: ML 3/96**

- **Go nna teng ga Tokomane ya Tshedimosetso ya Maitshetlego (BID) go naya ditshwaelo mo go yona**
- **Taletso go ikwadisa jaaka mongwe yo o nang le kgatlhego gape yo o amegang.**
- **Dikgato tse di latelang mo tsamaisong ya Ditumelelano mo Tikologong.**

Wena yo o rategang yo o nang le kgatlhego gape yo o amegang

Moepo wa Polatinamo wa Lonmin, *Lonmin Platinum Mine* (Lonmin) o dira jaaka Setlamo sa Polatinamo sa Bophirima, *Western Platinum Limited* (WPL) gape le jaaka Setlamo sa Polatinamo sa Botlhaba, *Eastern Platinum Limited* (EPL). Lonmin e batla go ikoketsa mo Ditshwanelong tsa Moepo tsa tikologo, *WPL Mining Right* ka ntlha ya bobolokelo jo bo lekanyeditsweng jwa dibebofatsi tsa dithailing tse di leng teng, ka jalo, bobolokelo jwa dibebofatsi tsa dithailing jo bontšhwa bo a tlhokega go letlelela ditiro tsa moepo mo nakong e e tlang. Go oketsa mo ntlheng e, dithutlaganyetso tse di jaaka mesima ya diphaephe le diteišene tsa dipompo le tsona di a batlega go tsamaisa dithailing go tloga mo letamong la 1 la dithailing la EPL, *EPL Tailings Dam 1* go ya go 1 *SHAFT UG2 Concentrator*, go tloga go *UG2 Concentrator* go ya go to the *Rowland Concentrator*, go tloga *Rowland Concentrator* go ya go TD 6 le TD8 gape le TD9 tse di tthagisitsweng, gape go tshwanetse ga diriwa koketso ya mesima ya diphaephe go tloga go TD2 go ya go TD8. Dibebofatsi tse dintšhwa tsa TD8 le tsa TD9 di tshwanetse go nna le bobolokelo jwa dithailing mo tikologong ya Ditshwanelo tsa Moepo, *Mining Right* mo WPL le mo EPL.

Partners JCJ Boshoff, AH Bracken, MJ Braune, JM Brown, CD Dalgliesh, JR Dixon, DM Duthe, BM Engelsman, R Gardiner, T Hart, GC Howell, WC Joughin, PR Labrum, DJ Mahlangu, RRW McNeill, HAC Meintjes, JA Middleton, MJ Morris, WA Naismith, GP Nel, VS Reddy, PN Rosewame, PE Schmidt, PJ Shepherd, VM Simposya, AA Smithen, KM Uderstadt, DJ Venter, ML Wertz, A Wood

Directors AJ Barrett, JR Dixon, PR Labrum, DJ Mahlangu, VS Reddy, PE Schmidt, PJ Shepherd

Associate Partners DJD Gibson, M Hirsch, DA Kilian, SA McDonald, M Ristic, MJ Sim, JJ Slabbert, HFJ Theart, D Visser, DP van den Berg, MD Wanless

Consultants AC Burger, *BSc(Hons)*; IS Cameron-Clarke, *PrSciNat, MSc*; JAC Cowan, *PrSciNat, BSc(Hons)*; JH de Beer, *PrSci Nat, MSc*; GA Jones, *PrEng, PhD*; TR Stacey, *PrEng, DSc*; OKH Steffen, *PrEng, PhD*; PJ Terbrugge, *PrSciNat, MSc*; DW Warwick, *PrSciNat, BSc(Hons)*

SRK Consulting (South Africa) (Pty) Ltd

Reg No 1995.012890.07

**African Offices:**

Cape Town	+ 27 (0) 21 659 3060
Durban	+ 27 (0) 31 279 1200
East London	+ 27 (0) 43 748 6292
Johannesburg	+ 27 (0) 11 441 1111
Kimberley	+ 27 (0) 53 861 5798
Pietermaritzburg	+ 27 (0) 33 345 6311
Port Elizabeth	+ 27 (0) 41 509 4800
Pretoria	+ 27 (0) 12 361 9821
Rustenburg	+ 27 (0) 14 594 1280
Accra	+ 23 (3) 24 485 0928
Harare	+ 263 (4) 49 6182
Lubumbashi	+ 243 (0) 81 999 9775

**Group Offices:**

Africa  
Asia  
Australia  
Europe  
North America  
South America



Porojeke e e tlhagisitsweng mo Lonmin e mo lefelong la bokgakala jwa go lekana dikilomitara di le 4 mo Borwa Botlhaba jwa Wonderkop. E mo tikologong ya Mmasepala wa Selegae wa Madibeng, *Madibeng Local Municipal*. mme e wela mo Kgaolong ya Mmasepala ya Bojanala, *Bojanala District Municipality*. Tikologo e porojeke e leng mo go yona e gaufi le metsesetoropo e mebedi e leng, wa Wonderkop le wa Segwaelane.

Dikarolo tsa porojeke e e tlhagisitsweng ke tse di latelang:

- Go dira mafelo a mabedi a bobolokelo jwa dibebofatsi tse dinšhwa tsa dithailing mo *WPL Tailings Dam 8 (TD8)* le *WPL Tailings Dam 9 (TD9)*.
- Mmila wa ditirelo go dira mesima ya diphaephe gape le matamo a dithailing ((go tla diriwa ditsela tsa lekgwarana kgotsa kerabole mo lefelong leo, mme mmila kgotsa tsela eo e tla tshwaragangwa le mararang a a leng teng a ditsela tsa meepo) le mefutafuta ya dinoka kwa bophirima jwa *WPL TD8* ;
- Gotshwaragangwa gape le kgodiso ya letamo le le busetsang metsi le le leng teng di tshwanetse go diragadiwa go ya ka ditlhokego tse go dumalanweng ka ga tsona tsa *DWA*.
- Kgodiso ya mesima ya diphaephe go tloga mo *Rowland Concentrator* go ya mo *TD8*;
- Go diriwa ga mesima ya diphaephe go tloga mo *EPL TD2* go ya kwa *WPL TD8*;
- Dira seteišene sa dipompo se se tlhagisitsweng go rwala dithailing go tloga mo *TD2* go ya go *TD8*; le
- Go dira mesima ya diphaephe go tloga mo *EPL Tailings Dam 2* go ya kwa go *UG2 Concentrator*.

Moepo wa Lonmin o na le Dipegelo tsa Manane a Botsamisi jwa Tikologo, *Environmental Management Programme Reports (EMPR)* tse di rebotsweng (tse di tsamaisanang le Molao wa Tlhabololo ya Metswedi ya Dimenerale le *Petroleum and Petroleum Resources Development Act*) (Molao 28 wa 2002). *EMPR* ke tokomane e e mo molaong e e go tlamang, gape e tlhalosa dintlha ka botlalo tsa ditiro tsa moepo mo Lonmin le tsa ditlhokego tsa botsamaisi jwa tikologo mo meepo ya Polatinamo mo Bophirima, *Western Platinum* le ya kwa *Botlhaba, Eastern Platinum*.

Pele Lonmin e ka simolola ka porojeke e e tlhagisitsweng, dikopo tse di latelang tsa ditumelelano tsa tikologo di tshwanetse go tlhokomelwa::

- Kutlwalo mo ditshekatshekong tsa tikologo, *An Environmental Impact Assessment (EIA)* e tshwanetse go bonwa go ya ka Molao wa Botsamaisi jwa Tikologo ya Setšhaba, *National Environmental Management Act* (Nomore ya Molao ke 107 wa 1998) (*NEMA*);
- Tlhabololo ya *EMP* go ya ka *MPRDA* (Molao wa 28 wa 2002)
- Kopo ya Lokwalo lwa Tiriso ya Metsi *A Water Use License Application (WULA)* (go tshwanetse ga diriwa tlhabololo mo togaganyong ya Lokwalo lwa Tiriso ya Metsi) go ya ka Molao wa Setšhaba wa Metsi, *National Water Act* (Nomore ya Molao wa 36 wa 1998) (*NWA*).

Lonmin e tlhophile *SRK Consulting* jaaka bokatisi jo bo ikemetseng ka bobona jwa *Ditshekatsheko tsa Tikologo, Environmental Assessment Practitioner* go tla go diragatsa dithulaganyetso tsa tikologo gape le go tsamaisana le tsamaiso ya boitlamo ya banni-le- seabe mo go tsa kgwebo mo dikopong tse di tlhagisitsweng fa godimo fa. Tsamaiso e tla tshwanela ke go nna le ditlhokego tsa *NEMA, MPRDA* le tsa *NWA*. Boemedi jo bo tla etelelang pele mo karolong ya *NEMA* mo porojekeng e tla nna Lefapha la Tlhabolo ya Ikonomi, Department of Economic Development, la Tikologo, Tshomarelo le la Bojanala, Environment, Conservation and Tourism (*DEDECT*), mo Porofenseng ya Bokone Bophirima. *WULA* e tla neelwa Lefapha la Merero ya Metsi, Department of Water Affairs (*DWA*), Dikantoro tsa Kgaolo ya Bokone Bophirima Regional gape le karolo ya *MPRDA* le yona e tla neelwa Lefapha la Metswedi ya Diminerale, Department of Mineral Resources (*DMR*) mo Dikantorong tsa Kgaolo ya Porofense ya Bokone Bophirima.

### **Go nna teng ga *BID* gore batho botlhe ba tshwaele**

Tokomane ya Tshedimosetso ya Maitshetlego (*BID*) e e neetsweng e tlhalosa porojeke e e tlhagisitsweng ya letamo la dithailing mo Lonmin gape e neelana le ka bontlhabongwe jwa botsamaisi jwa dithulaganyetso tsa tikologo. E neela batho kgotsa mekgatlho e e nang le kगतlhego gape e e amegang (*I&APs*) go nna le tšhono mo tshimologong go ka tshwaela ka ga porojeke e e tlhagisitsweng gape le go ikwadisa jaaka motho yo o nang le kगतlhego le yo o amegang *I&AP*. Ditokomane tse dintsi di tla nna teng mo nakong e e tlang ya tsamaiso ya dithulaganyetso tsa tikologo. Ditshwaelo tsa gago le ditshitshinyo mo ntlheng nngwe le nngwe malebana le porojeke e e tlhagisitsweng, go akarediwa le tsamaiso tsa setegeniki le boitlamo jwa banni – le-

seabe mo go tsa kgwebo le tsona di tla go thusa go itebaganya ka tlhamalalo le dithuto tsa setegeniki gape seno se, se tla thusa le bothati kgotsa botsamaisi go dira ditshwetso.

BID e akaretsa tse di latelang:

- Tlhaloso ka botlalo ya porojeke e e tlhagisitsweng;
- Dithulaganyetso tsa tikologo gape le tsamaiso ya banni-le-seabe mo go tsa kgwebo e tla tsona tse di tla latelang;
- Gore banni –le-seabe ba tshwanetse go ikwadisa jang le gore ba akarediwe mo tsamaisong; gape
- Ditlha tse di bothokwa tse di ka tshwenyang mo tshakatshekong ya dithuto tsa boitseanape.

BID, le foromo e e tsamaisanang le yona ya Boikwadiso gape le ya Ditshwaelo le tsona di tla nna teng mo mafelong a botlhe a a tlhagisitsweng mo lenaneng le le fa tlase fa.

**Lenane1: Mafelo a botlhe mo Tokomane ya Tshedimose tso ya Maitshetlego e ka fitlhelwang teng:**

Mafelo a botlhe	Locality	Contact	Telephone
Boamogelo kwa LPD mo Lonmin	Marikana	Hazel Fiehn	014 571 2182
Hosetele ya EPL	Marikana	David Makhema	014 571 4439
Dikatontorokgolo tsa EPL	Marikana	Hanlie Ryan	014 571 2399
Dikantoro tsa hosetele ya Wonderkop	Marikana	Patrick Molise	014 571 3348
Borakanelo jwa Setshaba sa Mooinooi mo Lonmin	Mooinooi	Elize Smith	014 571 4211
Dikantoro tsa Bapo ba-Mogale,	Marikana	M Mphoreng	012 261 1500
Marikana Public Library	Marikana	R Motlhabane	014 572 3611
Madibeng Local Municipality	Van Velden Street, Madibeng	Reception	012 318 9500
Madibeng Public Library	Van Velden Street, Madibeng	Ina Annandale	012 318 9318
Rustenburg Local Municipality	C/o Beyers Naude & Mandela Str, RTB	Maletsi Mako	014 590 3551
Rustenburg Public Library	C/o Heystek & Thabo Mbeki, Rustenburg	Pieter Louw	014 590 3295
Bojanala District Municipality	C/o Beyers Naude & Fatima Bhayat Dr. RTB	Reception	014 590 4500

**Taletso go tla go ikwadisa jaaka motho yo o nang le kगतlhego le yo o amegang (I&AP)**

O lalediwa go tla go ikwadisa jaaka mongwe yo o nang le kगतlhego gape yo o amegang (I&P) mo tsamaisong e e kgethegileng e ya dithulaganyetso tsa tikologo, ditshwaelo kgotsa gona go tlhagisa dintlha dingwe le dingwe tse di go tshwenyang. Tsweetswee, tlatso foromo ya ditshwaelo e e tshwarisitsweng, morago ga foo, o e romele kgotsa o e buisetse kwa kantorong ya boitlamo ya monni –le –seabe mo go tsa kgwebo (SRK)

O amogelesegile go tlisa ditshwaelo tsa gago mo go BID ka ditsela tse di latelang:

- Ka go tlatso foromo e e tshwarisitsweng ya boikwadiso le ditshwaelo, mme o e romele kgotsa o e tlise mo kantorong ya boitlamo ya monni-le- seabe mo go tsa kgwebo;
- Kwala lokwalo kgotsa kwala dintlha dingwe tse o batlang go di tlisa mo pampiring e nngwe, mme o di romele ka poso, imeile kgotsa fekese; le
- Go leletsa mogala mo kantorong ya boitlamo ya monni –le-seabe mo go tsa kgwebo.

Jaaka ditlhokego tsa melawana e e riling, banni –le- seabe mo go tsa kgwebo ba na le matsatsi a le 30 go go kwadisa jaaka motho yo o nang le kगतlhego kgotsa yo o amegang mo porojekeng e (I&APs). Tsweetswee, ikwadiseng ka go tlatso foromo e e tshwarisitsweng kgotsa e e tsentsweng, mme o e romele kwa kantorong ya boitlamo ya monni-le- seabe mo go tsa kgwebo ka **Friday, 19 April 2013**

**Dikgato tse di latelang tsa tsamaiso ya Dithulaganyetso tsa**

Morago ga kitsiso ya tlhagiso ya porojeke, Pegelo e e lekanyeditsweng e e kwadilweng, *Draft Scoping Report* e tla nna teng gore batho botlhe ba neelane ka ditshwaelo. Banni –le –seabe mo go tsa kgwebo gape le batho ba ba nang le kगतlhego le ba ba amegang ba tla itsisiwe matlha a a farologaneng a go nna teng ga pegelo mo nakong e e tlang ga mmogo le dintlo tse di tlabong di butswa go tla go tshwarela ditlha giso le dipuisano malebana le Pegelo e e lekanyeditsweng e e kwadilweng.

Tsweetswee, fa o ka nna le dipotso dingwe, batla tshedimosetso e nngwe gape kgotsa go tlhagisa dintlha dingwe tse di go tshwenyang le fa e ka nna ditshitshinyo, ikopanye le:

**Elna de Beer – mogala: +27 (0)11 441 1111/imeile: edebeer@srk.co.za /fekese: + 27 (0)11 086 506 1737**

Re lebogela dintlha tse o di neileng malebana le tsamaiso ya dithulaganyetso tsa tikologo, mme re tla nna re letile go tla go kopana le wena mo nakong e e tlang

SRK Consulting - Certified Electronic Signature

 *Beer.*  
43673941338/Letter  
240-1716-6028-DEEL  
This signature has been printed digitally. The Authority has given permission for its use for this document. The details are stored in the SRK Signature Database

**ELNA DE BEER**

**Kantoro ya tshwaragano/boitlamo ya monni –le-seabe mo go tsa kgwebo: Porojeke e e tlhagisitsweng ya matamo a dithailing**

# DITHULAGANYETSO TSA TIKOLOGO TSA MATAMO A MANTHWA DITHAILING A A TLHAGISITSWENG GA MMOGO LE DITHULAGANYETSO TSE DI TSAMAEANANG LE TSONA MO MOEPONG WA POLATINAMO KWA BOPHIRIMA LE MOEPO WA POLATINAMO O O KWA BOTLHABA, MO POROFENSENG YA BOKONE BOPHIRIMA

Nomere ya DEDECT: NWP/EIA/08/2012

Nomere e e tlhagisitsweng ya DMR: WPL: ML8/95

Nomere e e tlhagisitsweng ya DMR: EPL: ML 3/96

## Tokomane ya Tshedimosetso ya Maitshetlego le taletso go tla go ikwadisa

March 2013

(Gape e fithelwa ka Setswana, Xhosa le ka se Afrikanse)



## MAITSHETLEGO LE MATSENO

Moepo wa Polatinamo mo Lonmin (Lonmin) o dira jaaka Setlamo sa Moepo kwa Bophirima, Western Platinum Limited (WPL) le kwa Moepong wa Polatinamo kwa Botlhaba, Eastern Platinum Limited (EPL). Ka jalo, ka ntlha ya bogolo jo bo lekanyeditsweng jwa bobolokelo, bobolokelo jo bontšhwa jwa dibebofatsi tsa dithailing gape le dithulaganyetso tse di tsamaelanang le bona di a tlokega. Seno se akaretsa go diriwa ga dilo tse di latelang:

- Letamo la dithailing (TD) 8 le la TD9 mo WPL
- Go diriwa ga mesima e mentšhwa ya diphaephe le go tlabolola e e leng teng go tla go kgona go romela dithailing go tloga concentrators tse di leng teng tsa Matamo a dithailing.
- Diteišene tsa dipompo, le
- Letamo le le busang metsi

Dithulaganyetso tsa mothale o di tla tshegetsa ditirelo tsa moepo mo nakong e e tlang mo ditikologong tse di nang le Ditshwanelo tsa Moepo mo EPL le tsa WPL.

Lonmin e setse e rebotse Lenane la Botsamaisi jwa Tikologo, Environmental Management Plan (EMP) e leng sengwe se se tlhokang ke Molao wa Tlhabololo ya Metswedi ya Diminerale le ya Polatinamo, Mineral and Petroleum Resources Development Act (MPRDA) (Molao 28 wa 2002) mo WPL le mo EPL.

Before Lonmin can commence with the proposed project, the following environmental authorisation applications need to be undertaken:

- Kutlwalo ya Tshekatsheko ya Tikologo An Environmental Impact Assessment (EIA) go ya ka Molao wa Botsamaisi jwa Tikologo in terms of the National Environmental Management Act (Nomere ya Molao wa 107 wa 1998) (NEMA) o o tshwanetseng go tlišiwa mo Lefapheng la Tlhabololo ya Ikonomi, Department of Economic

**Moepo wa Polatinamo mo  
Lonmin ke ofe?**

Moepo wa Polatinamo wa  
Lonmin (Lonmin) o fithelwa  
mo aforikaborwa a m aforika  
bois a South African



Development, le la Tikologo, Tshomarelo le Bojanala, Environment, Conservation and Tourism, mo porofenseng ya Bokone Bophirima,

- EMP Amendment in terms of the MPRDA (Act 28 of 2002) to be submitted to the regional North West Province Department of Mineral Resources; and
- A Water Use License (WUL) Application (Tlhabololo (Tlhabololo ya Lokwalo lwa togaganyo la Tiriso ya Metsi Amendment to the Integrated Water Use Licence IWUL) go ya ka Molao wa Sethaba wa Metsi, National Water Act (Nomore ya Molao wa 36 ya 1998 NWA).

Porojeke, dithulaganyetso tsa tikologo tse di latelang di tshwanetse go tlhokomelwa Moepo wa Lonmin o itlhophetse SRK go nna bokatisi jo o ikemetseng ka bobona ba Tshekatsheko ya Tikologo go tla go diragatsa tsamaiso ya dithulaganyetso tsa tikologo gape le boitlamo kgotsa tshwaragano ya monni –le- seabe mo go tsa kgwebo e e tsamaelanang le yona.

Maikaelelo a Tokomane e ya Tshedimosetso ya Maitshetlego, Background Information Document (BID) ke go neela batho ba ba nang le kgatlhego gape le ba ba amegang tshedimosetso ka ga porojeke e e tlhagisitsweng le dikarolo tsa yona, tsamaiso ya taolo le gore o tshwanetse go tsena jang mo tsamaisong e.

## **TALETSO YA GO TLISA DITSHWAELO LE YA GO IKWADISA JAAKA MOTHO YO O NANG LE KGATLHEGO GAPE YO O AMEGANG**

Fa o batla go nna motho yo o batlang go ikwadisa jaaka mongwe yo o nang le kgatlhego gape yo o amegang mo dithulaganyetsong tse di kgethegileng tsa tsamaiso ya tikologo (ke go re mo Porojekeng ya Polatinamo mo Lonmin), kopa tshedimosetso e nngwe gape, go sa nneng jalo tlhagisa dintlha kgotsa ditshwaelo tsa gago, tsweetswee, tlatsa tsebe ya pampiri e e neilweng ya Boikwadiso le ya Ditshwaelo. Fa o feditse e busetse kwa kantorong Boitlamo kgotsa ya tshwaragano ya monni –le-seabe mo go tsa kgwebo wa SRK.

### **BOITLAMO JWA MONNI- LE-SEABE**

**Elna de Beer  
SRK Consulting  
P O Box 55291  
Northlands  
2116**

**Mogala :+27(0)11 441 1111 Fekese : +27(0)86  
5061737**

**Email: edebeer@srk.co.za**

## **TSWAEETSWEEE, TLISA DITSHWAELO TSA GAGO LE GO IKWADISA JAAKA MONGWE YO O NANG LE KGATLHEGO LE YO O AMEGANG, FRIDAY, 19 APRIL 2013**



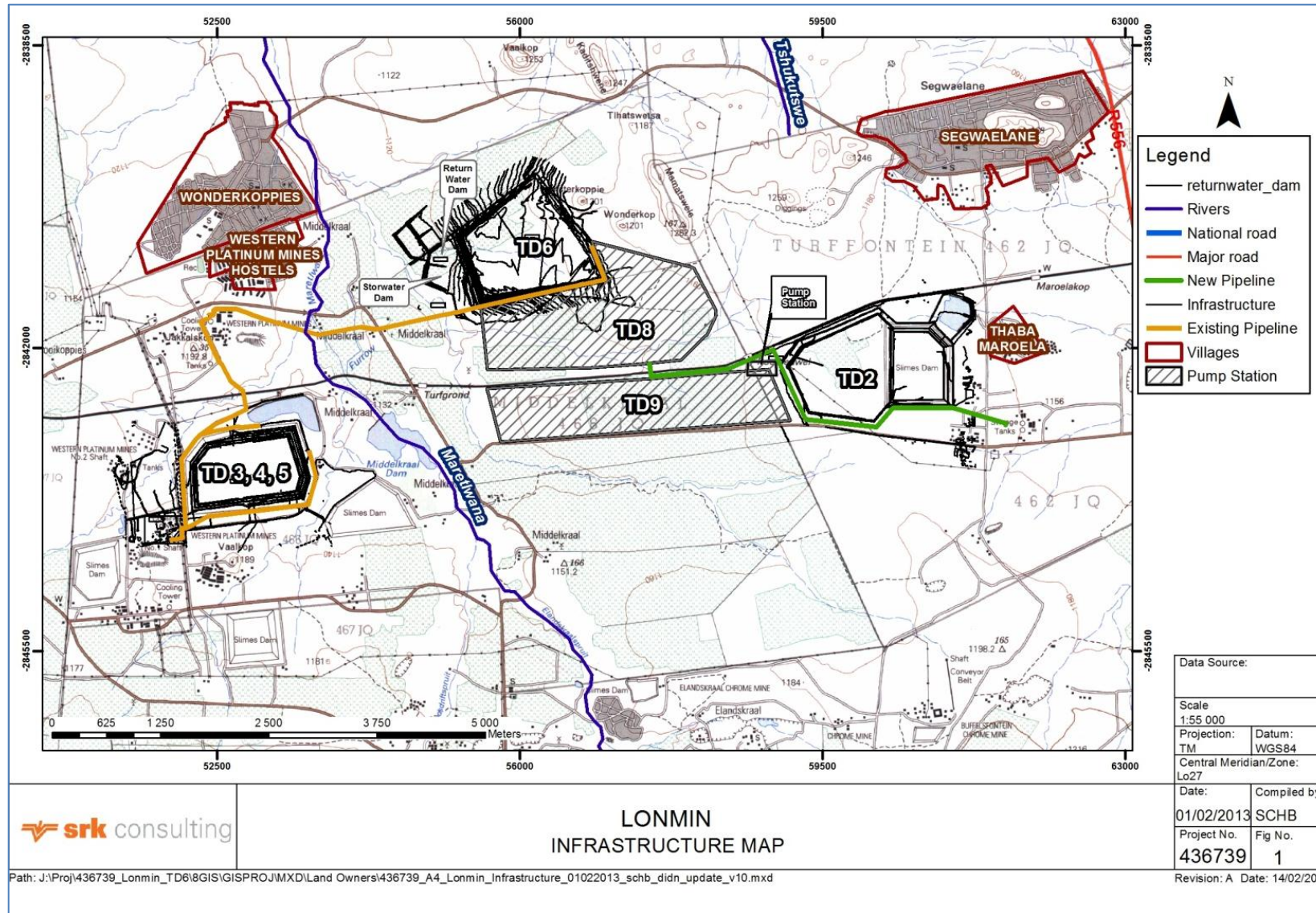
Setshwantsho sa 1 pono mo tikologong ya Lonmin mo porojeke e e tlhagisitsweng e tshwanetseng go nna teng

---

## LEFELO LA POROJEKE E E TLHAGISITSWENG

---

Porojeke e e tlhagisitsweng mo Lonmin, e tla diragadiwa mo lefelong le le ka lekanang dikilomitara di le 4 mo Borwa Botlhaba jwa Wonderkop. E mo lefelong la Mmasepala wa Selegae wa Madibeng, *Madibeng Local Municipality*, mme e ikadile mo lefelong la Mmasepala wa Kgaolo wa Bojanala, *Bojanala District Municipality*. Lefelo la porojeke lona le fa gare ga metsesetoropo e mebedi e leng, wa Wonderkop le wa Segwaelane (Lebelela setshwantsho sa See 2)



Setshwantsho sa 2 ke sa tikologo ya Kgaolo mo Lonmin mo go bontshiwang ditirelo le dikarolo tsa projeke e e leng teng matamo a mantšhwa a dithailing a a tlhagisitsweng gape le dithulaganyetso tse di tsamaelanang le ona



## POROJEKE E E TLHAGISITSWENG

Lonmin e ikaelela go aga matamo a manthwa a mabedi a didiriswa tse di setseng morago ga thulaganyo ya manyatshipi a a ntshitsweng a a leng mosola go tswa mo go a a seng mosola go netefatsa gore go na le bobolokelo jo bo lekaneng jwa botshelo mo moepong. Seno se, se tla akaretsa go dirwa ga dithulaganyetso tse di tsamaelanang le kago e go tshwana le mesima ya diphaephe, diteišene tsa dipompo gape le ditirelo tsa ditsela le letamo le le tsamaisanang le dilo tsothe tse le le tla busetsang metsi morago.

### What are Tailings?

Tailings are the materials left over after the process of separating the valuable or from the less valuable ore. Tailings are made up of pulverized waste mineral mixed with water.

Thulaganyo le dikarolo tsa lefelo mo go tlhagiseditsweng teng porojeke di bontshwa mo setshwantshong sa 2, mme di akaretsa dintlha tse di latelang:

- Kago ya mabolokelo a mabedi a mantšhwa a dibebofatsi tsa didiriswa tse di setseng fa go ne go diriwa dithulaganyo tsothe tsa go tlaola manyatshipi a a mosola go tswa mo go a a seng mosola mo Moepong wa Polatinamo o o kwa Bophirima le wa letamo la 8 (TD8) le o o kwa Bophirima wa letamo la (TD9).
- Ditirelo tsa ditsela di tshwanetse go dirisetswa matamo a didiriswa tse di setseng fa go ne go tlaolwa manyatshipi a a mosola go tswa mo go a a seng mosola go tla go dirisiwa fa go agiwa mesima ya diphaephe le matamo a didiriswa tse di setseng fa go ne go tlaolwa manyatshipi a a mosola go tswa mo go a a seng mosola (go tla agiwa ditsela tsa lekgwarana kgotsa kerabole mo mafelong a a leng fa gare, mme a tla golagangwa le mararang a ditsela a a leng teng mo moepong).
- Mefutafuta ya dinoka, mo Bophirima jwa Moepo wa Polatinamo mo TD8 ;
- Go bopa gape letamo le le busang metsi le le leng teng le go le godisa go ya ka ditlhokego tsa DWA;
- Kgodiso ya mesima ya diphaephe go tloga mo *Rowland Concentrator* go ya mo go TD8;
- Kago ya mesima ya diphaephe go tloga mo moepong wa Polatinamo mo Botlhaba, *Eastern Platinum* go ya kwa go wa Polatinamo kwa Bophirima mo go TD8, *Western Platinum TD8*; le
- Kago e e tlhagisitsweng ya seteišene sa dipompo go tla go tsamaiso ya didiriswa tse di setseng ga go ne go tlaolwa manyatshipi a a mosola go tswa mo go a a seng mosola go tloga mo go TD2 go ya mo go TD8.
- Kago ya mesima ya diphaephe go tloga mo letamong la didiriswa tse di setseng fa go ne go tlaolwa manyatshipi a a mosola go tloga mo letamong la 2 mo moepong wa Polatinamo mo Botlhaba go ya go *UG2 Concentrator*.

Letamo la 8 la didiriswa tse di setseng fa go ne go tlaolwa manyatshipi a a mosola go tswa mo go a a seng mosola le rulagantswe go le bana le le TD6 e e leng teng go na jaanong fa TD9 e rulaganyeditswe go nna gaufi le tsela e e kgakala mo bophirima jwa TD8. Mo motlhaleng o o tlhagisitsweng mo TD8 go na le moela wa metsi o o sa kgaleng mo ditlheng tsothe tsa ngwaga o o tshwanetseng go faposwa. Didiriswa tse di setseng fa go ne go tlaolwa manyatshipi a a mosola go tswa mo go a a seng mosola di tla pompelwa mo go TD 8 e e tlhagisitsweng go tloga mo *1 SHAFT UG2 Concentrator*, go kgabaganya dikagokago tsa Rowland tse di leng teng mo mesimeng ya diphaephe tse di tshwanetseng go okediwa gape le go tlhabololwa. Didiriswa tse di setseng fa go ne go tlaolwa manyatshipi a a leng mosola go tswa mo go a a seng mosola tsona di tla pompiwa go tloga ditirelong tsa EPL go kgabaganya seteišene sa dipompo sa TD2 go ya go TD 8 e e tlhagisitsweng.

Mesima e mengwe ya diphaephe e tla epiwa go tloga mo go TD2 go ya mo go *UG2 Concentrator*. Mesima yotlhe e ya diphaephe e tla batla kago ya seteišene sa dipompo go pompa didiriswa tse di setseng fa go ne go tlaolwa manyatshipi a a mosola mo go a a seng mosola, ga mmogo le ditirelo tsa ditsela, tse e leng gore le tsona di kgabaganya phapogo ya moela. TD 8 e e tlhagisitsweng e tla tlhabololwa pele, mme e tla salwa morago ke TD 9 e e tlhagisitsweng fa go tlhokagala. Phetso ya TD 8 le TD 9 tse di tlhagisitsweng yona e rulagantswe go tshologela mo letamong le le leng teng le le tlišang metsi le le lona le tshwanetseng go agiwa sešwa gape le go oketsiwa go ya ka ditlhokego tsa Molao wa Setshaba wa Metsi *National Water Act*.



## Project timelines

Should environmental authorisation be granted to proceed with the proposed project, the anticipated project timelines are:

- Life of mine = 50 years (until 2067)
- Construction = start by July 2014
- First production = December 2015

### **Lefelo le le kgethilweng**

Lefelo le le rategang le tlhophilwe ka gonne le le gaufi le WPL TD6, le EPL TD2, mme diconcentrator tsa EPL le tsa WPL. Go oketsa mo go se, dibebofatsi tsa didiriswa tse di setseng ga go ne go tlaolwa manyatshipi a a mosola go tswa mo go a a seng mosola le dithulaganyetso tse di tlhagisitsweng tsona di tla nna mo mafelong a e leng a moepo (lenane 1).

**Lenane la 1lefelola porojeke le le tlhaotsweng go ya ka dikarolo tsa naga**

Dikarolo tsa naga	Dikarolo tsa naga	Dikarolo tsa naga
Middelkraal 466 JQ 56	Middelkraal 466 JQ 44	Middelkraal 466 JQ Re58
Middelkraal 466 JQ 50	Middelkraal 466 JQ 43	Middelkraal 466 JQ 46
Middelkraal 466 JQ Re9	Middelkraal 466 JQ 63	Middelkraal 466 JQ 26
Middelkraal 466 JQ Re51	Middelkraal 466 JQ 60	Middelkraal 466 JQ 26

### **Lenane la tireloloago**

Lonmin WPL le EPL di na le Manane a tireloloago, Social and Labour Plans (SLP) a a rebotsweng ke Lefapha la Metswedi la Dimineral, Department of Mineral Resources (DMR). Tseno tse SLP, di tla bopa karolo ya tokomane ya Tlhabololo ya EMPR ya porojeke e.

### **Boitekanelo le Tshireletsego**

Porojeke e e tlhagisitsweng e tla tshwaragana le ditlhokego tsa Lonmin tsa Khoutu ya Bokatisi, Code of Practice, ya matamo a didiriswa tse setseng fa go ne go tlaolwa manyatshipi a a mosola go tswa mo go a a seng mosola jaaka karolo ya ditlhokego tsa Molao wa Moepo wa Boitekanelo le Tshireletsego, nomore ya 29, 14 Seetebosigo 1996 Mine Health and Safety Act No. 29, 14 June 1996.

### **Botsamaisi jwa Tikologo le Tsosoloso**

Porojeke e e tlhagisitsweng e tla tshwaragana le ditlhokego tsa Lonmin tsa Khoutu ya Bokatisi, Code of Practice, ya matamo a didiriswa tse setseng fa go ne go tlaolwa manyatshipi a a mosola go tswa mo go a a seng mosola jaaka karolo ya ditlhokego tsa Molao wa Moepo wa Boitekanelo le Tshireletsego, nomore ya 29, 14 Seetebosigo 1996 Mine Health and Safety Act No. 29, 14 June 1996.

### **Botsamaisi jwa Tikologo le Tsosoloso**

Morago fa go sena go fitlhelwa dithulaganyetso tsa tikologo go tswa go NEMA le MPRDA, go tla nna le tlhokomelo e e riling go netefatsa gore EMPR e e rebotsweng e tsenngwa mo tirisong mo nakong ya dikgato tsotlhe tsa porojeke. Go ya ka MPRDA, tshekatsheko ya go dira tiro e tla diragadiwa morago ga dingwaga di le pedi go bona gore a ditiro tsotlhe di diragadiwa go ya ka ditsela tse le tlhagisitsweng tse di leng teng mo EMPR gape le ditlhokego tse di ka nnang teng go tswa mo botsamaising. Lenane la Tsosoloso, Rehabilitationa Plans (la matamo a didiriswa tse di setseng fa go ne go tlaolwa manyatshipi a a leng mosola gape le dithulaganyetsho tsa moepo tse di tsamaisanang) le tsona di tshwanetse tsa bo di tlhabololetse



tswalelo ya moepo e e rulagantsweng go tla go diragadiwa ka ngwaga wa 2060. Thulaganyo ya Tsosoloso e e tswelatseng e gateletswe mo lenaneng le.

### ***Ditlhokego tsa metsi le motlakase***

Ditlhokego tsa metsi le tsa motlakase tsa TD8 le tsa TD9 gape le dithulaganyetso tse di tsamaisanang natso le tsona di tla bonwa go tswa mo moepong. Ditlhokego tse di lekanyeditsweng go ya ka tlhlotlhomiso e e dirilweng ke setllhopho sa porojeke le tsona di tla tlhokomelwa ke EIA gape le dithuto tsa boitseanape tse di tsamaisanang.

### ***Botsamaisi jwa matlakala***

Matlakalala a selegae le a a leng kotsi a nna teng ka nako ya kgato ya go agiwa matamo a a tlleng go nna le didiriswa tse di setseng fa go ne go tllhaolwa manyatshipi a a leng mosola go tswa mo go a a seng mosola, mme a tla nna a bolokilwe nakwana mo lefelong lengwe mo moepong go ya ka dithulaganyo tsa botsamaisi tse di leng teng mo moepong. Matlakala otlhe a tla tloswa ke dikonteraka tse di nang le lokwalotetla go latlha matlakala.

---

## **THEBOLO YA TIKOLOGO**

---

### ***EIA (Thebolo ya NEMA)***

EIA ke ya TD8 le TD9 tse di tlhagisitsweng, mme e dirisiwa go ya ka NEMA, Nomore ya Molao wa 107 wa 1998 le wa MPRDA, nomore ya Molao wa 28 wa 2002. Ditsamaiso tse pedi tse, di tla diragadiwa ka nako e le nngwe, mme ditokomane tsotlhe di tla tshwanela ke go sala morago ditlhokego tsotlhe tse di leng teng mo melaong e mebedi e.

EIA e na le dikarolo dikgaolo di le pedi (Setshwantsho 3).

### ***Scoping phase***

Kgato ya *Bogolo jwa thuto* – mo kgatong e, dintlha kgotsa ditlhagiso tsa tshekatsheko mo kgatong ya tshekatsheko ya kutlwalo di tla tllhaolwa gape le bogolo jwa thuto bo tla tllhalosiwa. Tshedimosetso e, e tla kgobokanngwa mo Pegelong e e kwadilweng ya Bogolo jwa Thuto, *Draft Scoping Report*, mme pegelo eo e tla nna teng gore batho botlhe ba tshwaele ka ga yona. Morago fa go sena go amogelwa ditshwaelo go tloga mo tsamaisong ya boitlamo ya monni –le –seabe, pegelo ya bogolo jwa thuto e tla konosetswa, mme ya romelwa kwa botsamaising kgotsa boemeding jo bo tshwanetseng go ya go tsaya ditshwetso malebana le tsamaiso e e setseng ya EIA

### ***Impact assessment phase***

Kgato ya tshekatsheko ya kutlwalo – mo nakong ya kgato ya kutlwalo ya tshekatsheko, dikutlwalo tse di leng botlhokwa di tla tlhlotlhomisiwa, mme go tsewa dikgato ga botsamaisi kana bothati go tla tlhagisiwa go paledisa/go nna kgalhanong kgotsa go tokafatsa dikutlwalo tse di sa amogeleseng, mme go nolofadiwe le go tswelatsa dikutlwalo tse di siameng. Pegelo ya EIA le EMP di tla ntshiwa le go nna teng gore batho botlhe ba kgone go tshwaela. Pegelo e tla konosetswa le go neelwa DMR (ka fa tlase ga MPRDA) le DEDECT (ka fa tlase ga NEMA), tse di tla dirisanang mmogo le bothati kana boemedi bongwe mo boemong jwa Bosetšhaba, porofense le jwa Selegae, go ya go tsaya ditshwetso tebang le porojeke e e tlhagisitsweng. etshaba, pwho will in consultation with other authorities at national, provincial and local levels.

### ***EMP (Thebolo ya MPRDA)***

Pegelo e le nngwe ka ga EIA le EMP e tla kwadiwa go akaretsa ditlhokwa tsa MPRDA le tsa NEMA.

### ***WULA (Thebolo ya NWA)***

Kopo ya Tlhabololo ya Lokwalotetla la Tiriso ya Metsi *A Water Use Licence* (WULA) yona e tla neelwa, mme e tla nna le dintlha tse di latelang:

- Koketso kgotsa kgodiso ya didiriswa tse di leng teng tse di setseng fa go tlaolwa manyatshipi a a leng mosola mo go a a seng mosola le letamo le le tlišang metsi
- Letamo le lentšhwa la didiriswa tse di setseng fa go ne go tlaolwa manyatshipi a a mosola go tswa mo go a a seng mosola le letamo le le tlišang metsi le le tsamaisanang le tsona
- Phaposo ya noka ya didiriswa tse di setseng ga go ne go tlaolwa manyatshipi a a mosola go tswa mo go a a seng mosola gore go kgongwe go oketsa kana go godisa letamo la didiriswa tse setseng fa go tlaolwa manyatshipi a a mosola go tswa mo go a a seng mosola
- Mesima e mebedi ya diphaephe tsa didiriswa tse di setseng fa go ne go tlaolwa manyatshipi a a mosola go kgabaganya noka gore go tle go epiwe mesima e mentshwa ya diphaephe

### ***Boitlamo jwa monni –le –seabe***

Tsamaiso e, e naya banni –le- seabe tšhono ya go ithuta ka ga porojeke, go tthagisa dintlha tse di ba tshwenyang gape le go tliša ditshitshinyo tsa bona go tšweletsa mesola e e farologaneng ya porojeke. Baitseanape ba setegeniki ga mmogo le ba setlhopha sa porojeke ba tla sekaseka dintlha le ditshwaelo tse di tshwanetseng mo nakong ya tsamaiso ya EIA. Ditokomane tsotlhe tse e seng tsa setegeniki tse go batho ba tshwanetseng go tthagisa ditshwaelo tsa bona mo go tsona di tla nna teng ka puo ya Seisimane, seAforikanse, Setswana gape le ka seXhosa. Setshwantsho sa 3 le sona se neelana ka bontlhanngwe jwa ditirelo tsa boitlamo tsa monni –le –seabe tse di nyalelanang le tsamaiso ya dithulaganyetso tsa tikologo.

### ***Dikutlwalo tse di bothokwa le dithuto tsa boitseanape tse di tthagisitsweng***

Dintlha tse di bothoka tse di utlwalang tse di malebana le tikologo di akaretsa tse di latelang:

- Dikutlwalo mo bošweng jwa setso
- Phaposo ya moela
- Go tlišolwa ga lerole
- Tatlhegelo ya botshelo jwa dijalo le diphologolo
- Kgotlelego ya metsi a a ka fa tlase le a a fa godimo a tšhola ke didiriswa tse di setseng fa go ne go tlaolwa manyatshipi a a mosola go tswa mo go a a seng mosola gape le mo mesimeng ya diphaephe
- Kgogolo ya mmu le kgotlelego ya mmu le tsona di tlišolwa ke mathata a ditirelo tsa dikago

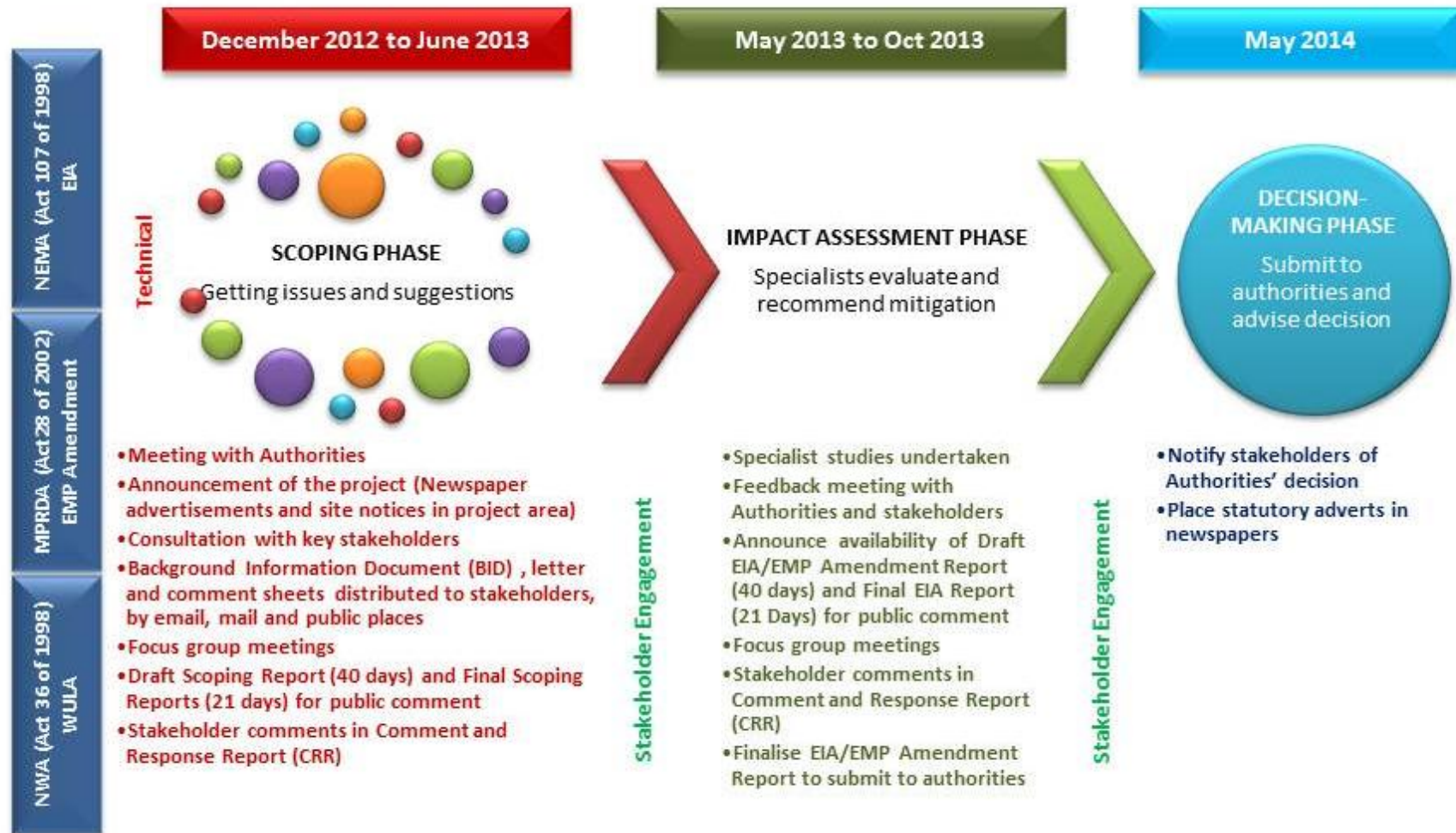
---

## **DITSHWAELO TSA GAGO DI MOSOLA THATA**

**Ditshwaelo tsa gago mo tthagisong ya porojeke, di akaretsa tsamaiso ya boitlamo/tshwaragano ya monni –le- seabe mo go tsa kgwebo gape le dintlha tsa setegeniki tse di tshwanetseng go sekasekiwa, le tsona di tla thusa mo bothating kana botsamaising fa go tsewa ditshwetso.**

---

## ENVIRONMENTAL AUTHORISATION AND ASSOCIATED STAKEHOLDER ENGAGEMENT PROCESS



Setshwantsho 3: Dithulaganyetso tsa tikologo le tsamaiso ya boitlamo jwa monni –le –seabe tse di tsamaisanang

**TALETSO YA GO IKWADISA LE YA GO NNA LE SEABE/TSAYA KAROLO: DITHULAGANYETSO TSA TIKOLOGO GAPE THULAGANYO YA TLHABOLOLO YA BOTSAMAISI JWA TIKOLOGO TSA MATAMO A MANTŠHWA A DITHAILING A A TLHAGISITSWENG GA MMOGO LE DITHULAGANYESO TSE DI TSAMAELANANG LE ONA KWA BOPHIRIMA JWA MOEPO WA POLATINAMO, 'WESTERN PLATINUM MINE' LE WA POLATINAMO MO BOTLHABA, EASTERN PLATINUM MINE, MO POROFENSENG YA BOKONE BOPHIRIMA**  
**Nomore ya DEDECT: NWP/EIA/08/2012**  
**Nomore e e tihagiso: DMR WPL: ML 8/95 & DMR EPL: ML 3/96**

**SRK Consulting**  
**KANTORO YA TSHWARAGANO/BOITLAMO YA MONNI –LE-SEABE MO GO TSA KGWEBO**

**Elna de Beer**  
**KANTORO YA BOITLAMO YA MONNI –LE- SEABE**  
**SRK Consulting**  
**P O Box 55291, Northlands, 2116**

**Mogala: (011) 441 1111**  
**Fekese: 086 5061737**

**imeile: edebeer@srk.co.za**

## REGISTRATION AND COMMENT SHEET

E na le tokomane ya tshedimosetso ya maitshetlego

March 2013

***Tsweetswee, tlatsa foromo, mme o e ise le ditshwaelo tsa gago kwa kantorong ya tshwaragano/boitlamo ya monni –le –seabe ka letlha la 19 April 2013***

<b>BONG</b>		<b>LEINA</b>	
<b>DITLHAKAINA</b>		<b>SEFANE</b>	
<b>MOKGATLHO</b>			
<b>ATERESE YA POSO</b>		<b>POSTAL CODE</b>	
<b>NOMORE YA MOGALA KWA GAE/TIRONG</b>		<b>CELL NO</b>	
<b>NOMORE YA FEKESE</b>		<b>IMEILE</b>	

**BOIKWADISO JAAKA MONGWE YO O NANG LE KGATLHEGO GAPE YO O AMEGANG (I&AP) (Tsweetswee, dira letshwao X mo lebokosong le le nepagetseng)**

Tsweetswee, nwadise ka molao jaaka motho yo o nang le kgatlhego gape yo o amegang (I&AP) gore le tle ke kgone go amgela tshedimosetso e nngwe gape le dikitsiso mo nakong ya tsamaiso ya EIA,	<b>YES</b>	<b>NO</b>
---	------------	-----------

**Ke batla go amogela dikitsiso tsa me ka mokgwa o o latelang**

Ka lekwalo (ka poso)	Imeile	Fekese	Mogala
----------------------	--------	--------	--------

**Ke batla go amogela ditokomane ka mokgwa o o latelang gore ke kgone go tshwaela:**

Dikhophi tsa pampiri	Ka imeile	Mo CD
----------------------	-----------	-------

Go ya ka GNR 543 (melawana ya EIA) ke batla go tihagisa mo pepeneneng kgwebo nngwe le nngwe e ke nang le yona, matlole, dikgatlhego tsa me kgotsa tse dingwe fela tse ke nang le tsona tse di leng teng mo thebolong kgotsa mo kganong ya kopo e:

**DITSHWAELO** (Tsweetswee, dirisa pampiri e nngwe fa o batla go tshwaela)

Ditlhagiso tse di latelang tsa tikologo, loago le tsa ikonomi di tshwanetse go buiwa mo nakong ya tsamaiso ya tlhabololo ya EIA/EMP:

Ditshwaelo tsa me mo botsamaising jwa setegeniki le jwa tihagiso ya boemedi jo bo ikemetseng ka bobona mo go tsa kgwebo ke tse di latelang: :

Tsweetswee, tlišang batho ba ba latelang jaaka I&Aps mo databaiseng ya lona:

**KE LEBOGELA DITLHAGISO KGOTSA DINTLHA TSE O DI NEELENG TSA GAGO.**

**LEINA:**

**TSHAENO:**

**LETLHA:**

## **Annexure 3: Flyers: Setswana and Xhosa**



## Distribution list for GLC Voice

Ward	Councillor	Area	No. of Copies	Recipient	Contact		
RTB-32 - Marikana	Appearance Ndlovu	Councillors Office	50	Appearance Ndlovu	081 862 1608		
		Marikana West Clinic					
		Mr Man shops	50	Mr Man			
		Thabo's tavern	50	Thabo			
		Marikana primary school	50	Ms Motswagae			
		MHDC office	50	Isiah Molaolwa			
		Library	50				
RTB - 31	Kgomotso Motlhasedi	Marikana RDP	50	Ms Kgomotso Motlhasedi	072 134 8964		
		Vodacom Shop					
Madibeng- 26	Nelson Mpongwana	Marikana combined school	50	Mr Moeng			
		Wonderkop sub council office	50	Mr Mpongwana	073 002 9314		
		Sanibonani shop	50				
		Wonderkop Clinic	50				
		Fish shops	50				
		Ya Rona Shops	50				
		Viva Shops	50				
		Leketi butchery	50				
		Mali shop	50				
		Maruatona Primary Schools	50				
		Wonderkop satellite police station	50				
		Mdb - 25	Yvonne Padi	SonopCouncillors Office	50	Ms Yvonne Padi	083 745 9433
				Sonop Clinic	50		
				Sonop primary	50		
Regorogile tuck shop	50						
Tebogo primary school	50						
Ward 28- Bapong	Gopolang Bertha	Bapong	50	Mr Gopolang Bertha	074 617 2592		
		Oustad shop	50				
		Bapong Clinic	50				
		Chinese shop	50				
		Taxi Rank	50				
		Nkwane Eating Shop	50				
		Ace Inn shops	50				
Ward 31- Modderspruit	Petrus Makgabo	Modderspruit councillors office	50	Mr Petrus Makgabo	082 338 0621		
		Maugridge shop	50				
		Modderspruit clinic	50				
		Madibeng FM @Ya Rona Shopping Complex	50				
Ward 7- Majakaneng	Lazarus Nkhoma	Councillors office	50	Mr Lazarus Nkhoma	072 520 6110		
		Majakaneng clinic	50				
		Chinesse Shop	50				
		Majakaneng undertakers	50				
		Taxi Rank	50				
		Majakaneng Clinic	50				
Ward 32- Segwaelane	Betty Mamogwe	Michael Modisakeng Combined school	50				
		Segwaelane	50	Ms Betty Mamogwe	073 336 9658		
		Segwaelane Clinic	50				
		Chinesse Shop	50				
		Rooikoppies Shop	50				
Bapo Ba Mogale		Thaba Morula school	50				
		Mphoreng Motlana	50	Mr Mphoreng Motlana	076 750 4501		
Wonderkop Sub Council		Steve Mataboge	50	Mr Steve Mataboge	072 199 4587		
Segwaelane Sub Council	Obed Mokomele		50	Mr Obed Mokomele	072 194 1922		
			50				
Ward 27-	Moleboheng Ngetho	Taxi Rank	50	Mrs Moleboheng Ngetho	073 159 1400		

<b>Mooinooi</b>					
		<b>Mooinooi Spar</b>	<b>50</b>		
		<b>Mooinooi Police Station</b>	<b>50</b>		
		<b>BP garage</b>	<b>50</b>		
<b>Lonmin</b>		<b>Wonderkop hostel</b>	<b>100</b>	<b>Mr Patrick Molise</b>	<b>014 571 3348</b>
<b>Lonmin</b>		<b>Karee hostel</b>	<b>100</b>	<b>Mr Zacharia Mokone</b>	<b>014 571 5338</b>
<b>Lonmin</b>		<b>EPL Hostel</b>	<b>100</b>	<b>Mr David Makhema</b>	<b>014 571 4439</b>
<b>Lonmin</b>		<b>LPD Reception</b>	<b>50</b>	<b>Constance Mghobozi</b>	<b>014 571 2009</b>

Wonderkop extension 2 \*

UGUNYAZISO LWEZENDALO NESILUNGISO SENKQUBO YOLAWULO LWENDALO  
YAMADAMA EENTSALELA ZEZIMBIWA AMATSHA ANDULULWEYO KUNYE NAMAZIKO  
ANXULUMENYO OMGODI I-WESTERN PLATINUM NOMGODI I-EASTERN PLATINUM,  
KWIPHONDO LASEMNTLA-NTSHONA



Inombolo ye DEDECT: NWP/EIA/08/2012  
Inombolo yokukhangela DMR WPL: ML 8/95 & DMR Ref No for EPL: ML 3/96

## ISIMEMO SOKUBHALISA NOKUNIKA IZIMVO

ILonmin Platinum Mine (Lonmin) isebenza njengeWestern Platinum Limited (WPL) ne-Eastern Platinum Limited (EPL). ILonmin ifuna ukwanda kummandla weLungelo lokuMba le-WPL ngenxa yomthamo wokugcina onganlanga weziseko zeentsalela zezimbiwa zazo ezikhoyo kwaye ke ngoko, iziseko zokugcina iintsalela zezimbiwa ezintsha ziyafuneka ukuvumela imisebenzi yokumba yexesha elizayo. Ukongeza, amaseko akhoyo anjengoluhlu lwemibhobho nezitishi zeempompo ziyafuneka ukuhambisa iintsalela zezimbiwa ukusuka kwiDama leeNtsalela zezimbiwa ze-EPL 1 ukuya kwisiHluzi sezimbiwa i-1 SHAFT UG2, ukusuka kwisiHluzi sezimbiwa i-UG2 ukuya kwisiHluzi sezimbiwa i-Rowland, isiHluzi sezimbiwa i-Rowland ukuya kwi-TD 6 kunye ne-TD8 neTD9 ezindululweyo, kwaye ulwandiso loluhlu lwemibhobho kufuneka lwenziwe ukusuka kwi-TD2 ukuya kwi-TD8 kwiziseko ezindululweyo ezitsha zeentsalela zezimbiwa, zibizwe ngokuba iDama leeNtsalela zezimbiwa 8 (Tailings Dam 8) (TD 8) ne-TD 9. Iziseko ezitsha ze-TD8 ne-TD9 ziza kunikeza indawo yocino lweentsalela zezimbiwa zemimandla yeLungelo lokuMba le-WPL ne-EPL zombini.

IProjekthi yeLonmin endululweyo imi malunga ne-4 km kumzantsi-mpuma weWonderkop. Ikwindawo kaMasipala weNgingqi waseMadibeng kwaye ingena kuMasipala weSithili saseBojanala. Ummandla weprojekthi ukufuphi neLokishi yaseWonderkop neLokishi yaseSegwaelane

Izahlulo zomhlaba	Izahlulo zomhlaba	Izahlulo zomhlaba
Middelkraal 466 JQ RE 56	Middelkraal 466 JQ RE 44	Middelkraal 466 JQ RE 58
Middelkraal 466 JQ RE 50	Middelkraal 466 JQ RE 43	Middelkraal 466 JQ RE 46
Middelkraal 466 JQ RE 9	Middelkraal 466 JQ RE 63	Middelkraal 466 JQ RE 26
Middelkraal 466 JQ RE 51	Middelkraal 466 JQ RE 60	Middelkraal 466 JQ RE 24
Middelkraal 466 JQ RE 69	Middelkraal 466 JQ RE 37	Middelkraal 466 JQ RE 2
Middelkraal 466 JQ RE 45		

ILonmin ineeNgxelo zeNkqubo yoLawulo lwezeNdalo (EMPR) ngokuthobela uMthetho woPhuhliso looVimba bezimbiwa nePetroliyam (Mineral and Petroleum Resources Development Act) (MPRDA) (uMthetho 28 ka-2002). Le EMPR luxwebhu olubophelela ngokusemthethweni, kwaye yandlala ngokucacileyo imisebenzi yokumba yeLonmin neemfuneko zolawulo lwezendalo kuMgodi wePlatinam okwiNtshona noMgodi wePlatinam okwiMpuma.

Phambi kokuba iLonmin iqalise iprojekthi endululweyo, izicelo zogunyaziso lwezendalo kufuneka zenziwe:

- **UHlolo lweMpembelelo yezeNdalo (i-EIA) ngokwayamene noMthetho woLawulo lwezeNdalo weSizwe (uMthetho No. 107 ka-1998) (i-NEMA);**
- **IsiHlomelo se-EMP ngokwayamene ne-MPRDA (uMthetho 28 ka-2002)**
- **IsiCelo seLayisenisi yokuSetyenziswa kwaManzi (i-WULA) (Isihlomelo seLayisenisi yokuSetyenziswa kwaManzi eHlanganisiweyo) ngokwayamene noMthetho wezaManzi weSizwe (uMthetho No. 36 ka-1998) (i-NWA).**

ILonmin iqeshe i-SRK Consulting njengeGosa loHlolo lwezeNdalo elizimeleyo ukuqhuba ugunyaziso lwezendalo nenkqubo yokubandakanya abachaphazelekayo abanxulumeneyo yezicelo ezilapha ngentla. Inkqubo iza kuhlalangebezana neemfuneko ze-NEMA, MPRDA ne-NWA. Ugunyaziwe okhokelayo wekhomponenti le-NEMA leprojekthi liza kuba liSebe loPhuhliso loQoqosho, ezeNdalo, uLondolozo noKhenketho (Department of Economic Development, Environment, Conservation and Tourism) (DEDECT), kwiphondo loMntla-Ntshona. I-WULA iza kungeniswa kwiiOfisi zoMmandla zeSebe leMicimbi yezaManzi (Department of Water Affairs) (DWA) zePhondo loMntla-Ntshona nekhomponenti ye-MPRDA kwiiOfisi zoMmandla zeSebe looVimba bezimbiwa (Department of Mineral Resources) (DMR) zePhondo loMntla-Ntshona.

Abachaphazelekayo bayamenywa ukuba babhalise njengamaQela anoMdlala naChaphazelekayo (I&APs). Ukufumana ulwazi olungaphaya noXwebhu loLwazi loMlandu (BID), nceda uqhagamshelane no:-

**Elna de Beer**  
**Stakeholder Engagement Office**  
**SRK Consulting, P O Box 55291, Northlands, 2116**  
**Umnxeba: (011) 441 1111**  
**Ifeksi: 086 5061737 i-imeyli: [edebeer@srk.co.za](mailto:edebeer@srk.co.za)**

IBHIDI ikwafumaneka kwezi ndawo zoluntu zilandelayo newebhusayithi ye-SRK: [www.srk.co.za](http://www.srk.co.za)

<b>Indawo kaWonke-wonke</b>	<b>Locality</b>	<b>Contact</b>	<b>Umnxeba</b>
Lonmin Reception	Marikana	Hazel Fiehn	014 571 2182
EPL Hostel	Marikana	David Makhema	014 571 4439
EPL main offices	Marikana	Hanlie Ryan	014 571 2399
Wonderkop Hostel Offices	Marikana	Patrick Molise	014 571 3348
Lonmin Community Centre	Mooinooi	Elize Smith	014 571 4211
Bapo Ba Mogale Traditional Authority	Marikana	M Mphoreng	012 261 1500
Marikana Public Library	Marikana	R Motlhabane	014 572 3611
Madibeng Local Municipality	Van Velden Street, Madibeng	Reception	012 318 9500
Madibeng Public Library	Van Velden Street, Madibeng	Ina Annandale	012 318 9318
Rustenburg Local Municipality	C/o Beyers Naude & Mandela Str, RTB	Maletsi Mako	014 590 3551
Rustenburg Public Library	C/o Heystek & Thabo Mbeki, Rustenburg	Pieter Louw	014 590 3295
Bojanala District Municipality	C/o Beyers Naude & Fatima Bhayat Dr. RTB	Reception	014 590 4500

**Umhla wokugqibela wobhaliso njengeqela elinomdla nelichaphazelekayo:**

**Friday, 19 April 2013**

**DITUMELELO MO TIKOLOGONG LE THULAGANYO YA TLHABOLOLO YA BOTSAMAISI JWA  
TIKOLOGO MO GO DIRILWENG DITLHAGISO KA GA MAFELO A MANTŠHWA A A  
LEKANYEDITSWENG GO TLOGA GODIMO GO YA TLASE GA MMOGO LE  
DITHULAGANYETSO TSA MOEPO MO MOEPONG WA POLATINAMO MO BOPHIRIMA LE WA  
KWA BOTLHABA, MO POROFENSENG YA BOKONE BOPHIRIMA.**

**LONMIN**

**Nomore ya DEDECT: NWP/EIA/08/2012  
Nomore ya tlhagiso ya DMR: WPL: ML 8/95 & DMR EPL: ML 3/96**

**TALETSO YA GO IKWADISA LE DITSHWAELO**

Moepo wa Lonmin wa Polatinamo (Lonmin) o dira jaaka moepo wa Setlamo wa Polatinamo kwa Bophirima, Western Platinum Limited (WPL) le moepo wa Setlamo wa Polatinamo wa kwa Botlhaba, Eastern Platinum Limited (EPL). Moepo wa Lonmin o batla go oketsega kgotsa go gola go ya ka fa ntlheng e e nepagetseng ya moepo mo WPL ka ntlha ya lefelo le le lekanyeditsweng la bobolokelo jwa dibebofatsi, ka jalo, go tlhokega bobolokelo jo bo lekanyeditsweng jwa dibebofatsi tse dintšhwa go tloga kwa godimo go ya kwa tlase go tla go letlelela ditiro tsa moepo gore di kgone go diragala mo nakong e e tlang. Go oketsa mo ntlheng e, dithulaganyetso tse di jaaka mesima ya diphaephe le ditešene tsa dipompo le tsona di a batlega go tla go rwala dithailing go tswa kwa letamong dithailing la 1 la EPL go ya go SHAFT1 UG2 Concentrator, go tloga go UG2 Concentrator go ya go Concentrator ya Rowland, go tloga mo go Concentrator ya Rowland go ya go TD 6, TD8 le TD9 tse di tlhagisitsweng, mme koketso ya mesima ya diphaephe e tshwanetse go tshwaraganngwa go tloga mo go TD2 go ya go TD8 go fitlha mo dibebofatsing tse dintšhwa tsa dithailing, gore di tle di bidiwe gore ke dithailing tsa Letamo la 8, Tailings Dam 8 (TD 8) le tsa TD 9. Dibebofatsi tse dintšhwa tsa TD8 le tsa TD9 ke tsona tse di tla nnang le bobolokelo jwa dithailing mo dikarolong tse di nang le ditshwanelo tsa moepo tsa go tshwana le WPL le EPL.

Porojeke e e tlhagisitsweng mo Lonmin e dikilomitara tse di ka lekanang 4 go ya kwa Borwa Botlhaba jwa Wonderkop. Porojeke e, e mo tikologong ya Mmasepala wa Selegae mo Madibeng, mme e fitlha le mo Kgaolong ya Mmasepala wa Bojanala. Tikologo e porojeke e leng mo go yona e, e kadile gaufi le metsesetoropo e mebedi, e leng, wa Wonderkop le wa Segwaelane.

Dikarolo tsa naga	Dikarolo tsa naga	Dikarolo tsa naga
Middelkraal 466 JQ RE 56	Middelkraal 466 JQ RE 44	Middelkraal 466 JQ RE 58
Middelkraal 466 JQ RE 50	Middelkraal 466 JQ RE 43	Middelkraal 466 JQ RE 46
Middelkraal 466 JQ RE 9	Middelkraal 466 JQ RE 63	Middelkraal 466 JQ RE 26
Middelkraal 466 JQ RE 51	Middelkraal 466 JQ RE 60	Middelkraal 466 JQ RE 24
Middelkraal 466 JQ RE 69	Middelkraal 466 JQ RE 37	Middelkraal 466 JQ RE 2
Middelkraal 466 JQ RE 45		

Lonmin e na le Dipegelo tse di rebotsweng tsa Thulaganyo ya Botsamaisi jwa Tikologo (EMPR) jo bo tsamaisanang le Molao wa Tlhabololo ya Metswedi ya Diminerale le Peteroleamo (MPRDA) (Molao wa 28 wa 2002). EMPR e, ke tokomane e e leng mo molaong e e go tlamang, mme e na le dintlha tsotlhe ka botlalo tse di malebana le ditiro tsa moepo wa Lonmin gape le ditlhokego tsa botsamaisi jwa tikologo mo moepong wa Polatinamo o o kwa Bophirima le o o kwa Botlhaba.

Pele Lonmin e ka simolola ka ga porojeke e e tlhagisitsweng, dikopo tse di latelang tsa ditumelelano tsa tikologo di tshwanetse go tlhokomelwa:

- **Kutlwalo ya Tekanyetso ya Tikologo (EIA) go ya ka Molao wa Botsamaisi wa Tikologo ya Setšhaba (Nomore ya Molao, 107 wa 1998) (NEMA);**
- **Tlhabololo ya EMP go ya ka MPRDA (Molao wa 28 wa 2002);**
- **Kopo ya Lokwalo lwa Tiriso ya Metsi (WULA) (Tlhabololo ya lokwalo lwa Togaganyo ya Tiriso ya Metsi) go ya ka Molao wa Setšhaba wa Metsi (Nomore ya Molao 36 wa 1998) (NWA).**

Lonmin e ithlophetse *SRK Consulting* jaaka Bokatisi jo o ikemetseng ka bobona mo Tekanyetsong ya Tikologo go tla go tsena mo botsamaising jwa ditumelelano tsa tikologo gape le tse di amanang le tshwaragano ya banni –le- seabe mo go tsa kgwebo mo dikopong tse di fa godimo fa. Tsamaiso e tla tshwanela ke go obamela ditlhokego tsa NEMA, MPRDA le tsa NWA. Bolaodi jwa NEMA jo bo eteletsweng pele mo karolong ya porojeke e tla nna Lefapha la Tlhabololo ya Ikonomi (*Department of Economic Development*), la Tikologo, Tshomarelo le Bojanala (*Environment, Conservation and Tourism*) (DEDECT), mo porofenseng ya Bokone Bophirima. WULA e tla neelwa Lefapha la Merero ya Metsi (DWA), dikantoro tsa Sedika mo Porofenseng ya Bokone Bophirima gape le karolo ya MPRDA le yona e tla ya go Lefapha la Metswedi ya Diminerale (DMR) le le mo dikantorong tsa Sedika mo Porofenseng ya



Bokone Bophirima.

Banni –le – seabe mo go tsa kgwebo le bona ba a lalediwa go tla go ikwadisa jaaka batho ba ba nang le kgalhego gape e le ba ba amegang (I&APs). Go bona tshedimosetso e nngwe gape le Tokomane ya Tshedimosetso ya Maitshetlego (BID), tsweetswee, ikopanye le:

**Elna de Beer, Kantoro ya monni –le- seabe mo go tsa kgwebo;  
SRK Consulting, P O Box 55291, Northlands, 2116  
Mogala : (011) 441 1111, Fekese: 086 5061737, Email: edebeer@srk.co.za**

Tokomane ya Tshedimosetso ya Maitshetlego (BID ) e ka bonwa le mo mafelong a botlhe a a latelang ga pe le mo webosaeteng ya SRK: [www.srk.co.za](http://www.srk.co.za)

<b>Mafelo a botlhe</b>	<b>Locality</b>	<b>Contact</b>	<b>Telephone</b>
Boamogelo kwa LPD mo Lonmin	Marikana	Hazel Fiehn	014 571 2182
Hosetele ya EPL	Marikana	David Makhema	014 571 4439
Dikatontorokgolo tsa EPL	Marikana	Hanlie Ryan	014 571 2399
Dikantoro tsa hosetele ya Wonderkop	Marikana	Patrick Molise	014 571 3348
Borakanelo jwa Setshaba sa Mooinooi mo Lonmin	Mooinooi	Elize Smith	014 571 4211
Dikantoro tsa Bapo ba-Mogale,	Marikana	M Mphoreng	012 261 1500
Marikana Public Library	Marikana	R Motlhabane	014 572 3611
Madibeng Local Municipality	Van Velden Street, Madibeng	Reception	012 318 9500
Madibeng Public Library	Van Velden Street, Madibeng	Ina Annandale	012 318 9318
Rustenburg Local Municipality	C/o Beyers Naude & Mandela Str, RTB	Maletsi Mako	014 590 3551
Rustenburg Public Library	C/o Heystek & Thabo Mbeki, Rustenburg	Pieter Louw	014 590 3295
Bojanala District Municipality	C/o Beyers Naude & Fatima Bhayat Dr. RTB	Reception	014 590 4500

**Letlha le le nepagetseng la boikwadiso jaaka mongwe yo o nang le kgalhego le yo o amegang : FRIDAY, 19  
April 2013**

## **Annexure 4: Project Announcement: Public Places**

**SRK DISTRIBUTION FORM**

TO: EPL MAIL OFFICES

PROJECT NUMBER: 436739  
PROJECT NAME: LONMIN TD8 & 9

BACKGROUND INFORMATION DOCUMENT, ANNOUNCEMENT LETTER & REGISTRATION

RECEIVED BY: *ashleigh*  
DATE: *13-3-2013*

**SRK DISTRIBUTION FORM**

TO: WONDERKOP HOSTEL OFFICES

PROJECT NUMBER: 436739  
PROJECT NAME: LONMIN TD8 & 9

BACKGROUND INFORMATION DOCUMENT, ANNOUNCEMENT LETTER & REGISTRATION

RECEIVED BY: *Do Not want to allow CO*  
DATE: *to put info up*

**SRK DISTRIBUTION FORM**

TO: BAPO BA MOGALE TA

PROJECT NUMBER: 436739  
PROJECT NAME: LONMIN TD8 & 9

BACKGROUND INFORMATION DOCUMENT, ANNOUNCEMENT LETTER & REGISTRATION

RECEIVED BY: *[Signature]*  
DATE: *13/03/2013*

**SRK DISTRIBUTION FORM**

TO: RUSTENBURG LOCAL MUNICIPALITY

PROJECT NUMBER: 436739  
PROJECT NAME: LONMIN TD8 & 9

BACKGROUND INFORMATION DOCUMENT, ANNOUNCEMENT LETTER & REGISTRATION

RECEIVED BY: *[Signature]*  
DATE: *13/3/03*

**SRK DISTRIBUTION FORM**

TO: RUSTENBURG PUBLIC LIBRARY

PROJECT NUMBER: 436739

PROJECT NAME: LONMIN TD8 & 9

BACKGROUND INFORMATION DOCUMENT, ANNOUNCEMENT LETTER & REGISTRATION

RECEIVED BY:

DATE:

Jacqui  
12.03.12

**SRK DISTRIBUTION FORM**

TO: <sup>Madibeng</sup> ~~MARIKANA~~ PUBLIC LIBRARY

PROJECT NUMBER: 436739

PROJECT NAME: LONMIN TD8 & 9

BACKGROUND INFORMATION DOCUMENT, ANNOUNCEMENT LETTER & REGISTRATION

RECEIVED BY:

DATE:

Zodwa  
13.03.2013



**SRK DISTRIBUTION FORM**

TO: <sup>Madibeng</sup> ~~MARIKANA~~ PUBLIC LIBRARY

PROJECT NUMBER: 436739

PROJECT NAME: LONMIN TD8 & 9

BACKGROUND INFORMATION DOCUMENT, ANNOUNCEMENT LETTER & REGISTRATION

RECEIVED BY:

DATE:

JWC HEINEMAN  
13/03/2013



**SRK DISTRIBUTION FORM**

TO:BOJANALA DISTRICT MUNICIPALITY

PROJECT NUMBER: 436739

PROJECT NAME: LONMIN TD8 & 9

BACKGROUND INFORMATION DOCUMENT, ANNOUNCEMENT LETTER & REGISTRATION

RECEIVED BY: Tsholofelo Dikgole  
DATE: 13/03/2013

**SRK DISTRIBUTION FORM**

TO: MARIKANA PUBLIC LIBRARY

PROJECT NUMBER: 436739

PROJECT NAME: LONMIN TD8 & 9

BACKGROUND INFORMATION DOCUMENT, ANNOUNCEMENT LETTER & REGISTRATION

RECEIVED BY: REFILWE  
DATE: 13/03/2013



**SRK DISTRIBUTION FORM**

TO: LONMIN RECEPTION

*EMM [Signature]*  
13/03/2013

PROJECT NUMBER: 436739

PROJECT NAME: LONMIN TD8 & 9

BACKGROUND INFORMATION DOCUMENT, ANNOUNCEMENT LETTER & REGISTRATION

RECEIVED BY:

DATE:

**SRK DISTRIBUTION FORM**

TO: EPL HOSTEL

BACKGROUND INFORMATION DOCUMENT, ANNOUNCEMENT LETTER & REGISTRATION

RECEIVED BY:

DATE:

*[Signature]*  
13/03/2013

PROJECT NUMBER: 436739

PROJECT NAME: LONMIN TD8 & 9

**SRK DISTRIBUTION FORM**

TO: LONMIN COMMUNITY CENTRE

BACKGROUND INFORMATION DOCUMENT, ANNOUNCEMENT LETTER & REGISTRATION

RECEIVED BY:

DATE:

*[Signature]*  
13/3/2013

PROJECT NUMBER: 436739

PROJECT NAME: LONMIN TD8 & 9