

Annexure 5: Project Announcement: Site notices

DEDECT Number: NWP/EIA/08/2012

DMR Ref No for WPL: ML 8/95 & DMR Ref No for EPL: ML 3/96

INVITATION TO REGISTER AND COMMENT

Lonmin Platinum Mine (Lonmin) operates as Western Platinum Limited (WPL) and Eastern Platinum Limited (EPL). Lonmin needs to expand on the WPL Mining Right area as a result of limited storage capacity of their existing tailings facilities and thus, new tailings storage facilities are required to allow for future mining activities. In addition, infrastructure such as pipelines and pump stations are required to transport tailings from their EPL Tailings Dam 1 to 1 SHAFT UG2 Concentrator, from the UG2 Concentrator to the Rowland Concentrator, the Rowland Concentrator to TD 6 and the proposed TD8 and TD9, and a pipeline extension is to be constructed from TD2 to TD8 to the proposed new tailings facilities, to be called Tailings Dam 8 (TD 8) and TD 9. The new TD8 and TD9 facilities will provide tailings storage for both Mining Right areas of WPL and EPL.

The proposed Lonmin Project is situated approximately 4 km south east of Wonderkop, and falls within the Madibeng Local Municipal area and falls within the Bojanala District Municipality. The project area is in the vicinity of the Wonderkop Township and the Segwaelane Township and include the following land portions:

| Grondporsies | Grondporsies | Grondporsies |
|--------------------------|--------------------------|--------------------------|
| Middelkraal 466 JQ RE 56 | Middelkraal 466 JQ RE 44 | Middelkraal 466 JQ RE 58 |
| Middelkraal 466 JQ RE 50 | Middelkraal 466 JQ RE 43 | Middelkraal 466 JQ RE 46 |
| Middelkraal 466 JQ RE 9 | Middelkraal 466 JQ RE 63 | Middelkraal 466 JQ RE 26 |
| Middelkraal 466 JQ RE 51 | Middelkraal 466 JQ RE 60 | Middelkraal 466 JQ RE 24 |
| Middelkraal 466 JQ RE 69 | Middelkraal 466 JQ RE 37 | Middelkraal 466 JQ RE 2 |
| Middelkraal 466 JQ RE 45 | | |

Lonmin is in possession of approved Environmental Management Programme Reports (EMPR) in compliance with the Mineral and Petroleum Resources Development Act (MPRDA) (Act 28 of 2002). This EMPR is a legally binding document, and details Lonmin's mining activities and environmental management

requirements at their Western Platinum Mine and Eastern Platinum Mine. Before Lonmin can commence with the proposed project, the following environmental authorization applications need to be undertaken:

- **An Environmental Impact Assessment (EIA) in terms of the National Environmental Management Act (Act No. 107 of 1998) (NEMA);**
- **EMP Amendment in terms of the MPRDA (Act 28 of 2002)**
- **A Water Use License Application (WULA) (Amendment to the Integrated Water Use Licence) in terms of the National Water Act (Act No. 36 of 1998) (NWA).**

Lonmin appointed SRK Consulting as the independent Environmental Assessment Practitioner to undertake the environmental authorization and associated stakeholder engagement process for the above applications. The process will meet the requirements of the NEMA, MPRDA and NWA. The lead authority for the NEMA component of the project will be the Department of Economic Development, Environment, Conservation and Tourism (DEDECT), North West province. The WULA will be submitted to the Department of Water Affairs (DWA) Regional Offices of the North West Province and the MPRDA component to the Department of Mineral Resources (DMR) Regional Offices of the North West Province.

Stakeholders are invited to register as Interested and Affected Parties (I&APs). To obtain more information and a Background Information Document (BID), please contact:

Elna de Beer, Stakeholder Engagement Office, SRK Consulting, P O Box 55291, Northlands, 2116

Tel: (011) 441 1111 - Fax: 086 5061737 - e-mail: edebeer@srk.co.za

The BID is also available at the following public places and the SRK website: www.srk.co.za

| Public Place | Locality | Contact | Telephone |
|--------------------------------------|--|----------------|--------------|
| Lonmin Reception | Marikana | Hazel Fiehn | 014 571 2182 |
| EPL Hostel | Marikana | David Makhema | 014 571 4439 |
| EPL main offices | Marikana | Hanlie Ryan | 014 571 2399 |
| Wonderkop Hostel Offices | Marikana | Patrick Molise | 014 571 3348 |
| Lonmin Community Centre | Mooiooi | Elize Smith | 014 571 4211 |
| Bapo Ba Mogale Traditional Authority | Marikana | M Mphoreng | 012 261 1500 |
| Marikana Public Library | Marikana | R Motlhabane | 014 572 3611 |
| Madibeng Local Municipality | Van Velden Street, Madibeng | Reception | 012 318 9500 |
| Madibeng Public Library | Van Velden Street, Madibeng | Ina Annandale | 012 318 9318 |
| Rustenburg Local Municipality | C/o Beyers Naude & Mandela Str, RTB | Maletsi Mako | 014 590 3551 |
| Rustenburg Public Library | C/o Heystek & Thabo Mbeki, Rustenburg | Pieter Louw | 014 590 3295 |
| Bojanala District Municipality | C/o Beyers Naude & Fatima Bhayat Dr. RTB | Reception | 014 590 4500 |

DUE DATE FOR REGISTRATION AS I&APs: FRIDAY, 19 APRIL 2013



OMGEWINGSMAGTIGINGS EN WYSIGING VAN DIE OMGEWINGSBESTUURSPROGRAM VIR DIE VOORGESTELDE NUWE SLIKDAMME EN GEASSOSIEERDE INFRASTRUKTUUR BY LONMIN WESTELIKE PLATINUM MYN EN OOSTELIKE PLATINUM MYN, NOORD-WES PROVINSIE

**DETECT Nr: NWP/EIA/08/2012
DMR Nr: WPL: ML 8/95 & DMR Nr: EPL: ML 3/96**

UITNODING VIR REGISTRASIE EN KOMMENTAAR

Lonmin Platinum Myn (Lonmin) bedryf hul onderneming as Westelike Platinum Limited (WPL) en Oostelike Platinum Limited (EPL). Lonmin is verplig om die WPL Mynregarea uit te brei, as gevolg van beperkte opgaarkapasiteit van die bestaande slikdam, en dus is word nuwe slikdamme benodig vir toekomstige mynaktiwiteite. Boonop word infrastruktuur soos pyplyne en pompstasies benodig vir die vervoer van slik vanaf hul EPL Slikdam 1 tot 1 SKAG UG2 Konsentraataanleg, vanaf die UG2 Konsentraataanleg na die Rowland Konsentraataanleg, die Rowland Konsentraataanleg na TD 6 en die voorgestelde TD8 and TD9. Verder word 'n pyplynverlenging beplan van TD2 to TD8. Die nuwe TD8 en TD9 fasiliteite sal slikopgaring vir beide mynregte areas WPL en EPL, voorsien.

The voorgestelde Lonmin Projek is ongeveer 4 km suidoos van Wonderkop in die Madibeng Plaaslike Munisipaliteit geleë en val binne die Bojanala Distrik Munisipaliteit. Die projek area is in die omgewing van die dorpe Wonderkop en Segwaelane geleë en beslaan die volgende grondporsies:

| Grondporsies | Grondporsies | Grondporsies |
|--------------------------|--------------------------|--------------------------|
| Middelkraal 466 JQ RE 56 | Middelkraal 466 JQ RE 44 | Middelkraal 466 JQ RE 58 |
| Middelkraal 466 JQ RE 50 | Middelkraal 466 JQ RE 43 | Middelkraal 466 JQ RE 46 |
| Middelkraal 466 JQ RE 9 | Middelkraal 466 JQ RE 63 | Middelkraal 466 JQ RE 26 |
| Middelkraal 466 JQ RE 51 | Middelkraal 466 JQ RE 60 | Middelkraal 466 JQ RE 24 |
| Middelkraal 466 JQ RE 69 | Middelkraal 466 JQ RE 37 | Middelkraal 466 JQ RE 2 |
| Middelkraal 466 JQ RE 45 | | |

Lonmin is in besit van 'n goedgekeurde Omgewingsbestuursprogram-verslag (OBPV) wat voldoen aan die vereistes van die Wet op die Ontwikkeling van Minerale en Petroleum Hulpbronne (MPRDA) (Wet 28 van 2002). The OBPV is a wetlik-bindende dokument wat Lonmin se mynaktiwiteite en omgewingsbestuurs-vereistes by hul Westelike-en-Oostelike Platinum myn, uiteensit. Voor Lonmin kan begin met

die voorgestelde projek, moet die volgende aansoeke vir omgewingsmagtiging onderneem word:

- 'n Omgewingsimpakstudie (OIS) ingevolge die die Wet op Nasionale Omgewingsbestuur (Wet Nr. 107 van 1998) (NEMA);
- 'n OBP Wysiging, ingevolge die Wet op die Ontwikkeling van Minerale en Petroleum Hulpbronne (MPRDA); en
- 'n aansoek vir 'n Watergebruik Lisensie (WULA) (Aanvulling tot die Geïntegreerde Watergebruik Lisensie), ingevolge die Nasionale Waterwet (Wet Nr. 36 of 1998) (NWA).

SRK Consulting is deur Lonmin aangestel as die onafhanklike omgewingskonsultant om die omgewingsmagtigingsproses en openbare deelname proses vir die bogenomede aansoeke te onderneem. Die proses voldoen aan die vereistes van die NEMA, MPRDA and NWA. Die leidende owerheid vir die NEMA komponent van die projek is die Department van Ekonomiese Ontwikkeling, Omgewing, Bewaring en Toerisme (DEDECT), in die Noordwes Provinsie. Die WULA sal by die Streekskantore van die Department van Waterwese (DWA), Noordwes Provinsie ingedien word, en die MPRDA komponent by die Departement van Minerale en Petroleum Hulpbronne (DMR) se streekskantore in die Noordwes Provinsie.

Belanghebbende partye word uitgenooi om te registreer as belanghebbende en geaffekteerde partye (B&GPs). Indien u verdere inligting verland, asook 'n Agtergrond Inligtingsdokument (AID), kontak asseblief vir:

**Elna de Beer, Openbare Deelname Kantoor, SRK Consulting, Posbus 55291, Northlands, 2116,
Tel: (011) 441 1111, Faks: 086 5061737e-pos: edebeer@srk.co.za**

Die AID is ook beskikbaar by die volgende openbare plekke en die SRK webwerf: www.srk.co.za

| Openbare Plek | Lokaliteit | Kontak | Telefoonnummer |
|--------------------------------------|-------------------------------------|----------------|----------------|
| Lonmin Ontvangs by LPD | Marikana | Hazel Fiehn | 014 571 2182 |
| EPL Hostel | Marikana | David Makhema | 014 571 4439 |
| EPL Kantore | Marikana | Hanlie Ryan | 014 571 2399 |
| Wonderkop Hostel Kantoor | Marikana | Patrick Molise | 014 571 3348 |
| Lonmin Community Centre | Mooinooi | Elize Smith | 014 571 4211 |
| Bapo Ba Mogale Tradisionele Owerheid | Marikana | MMphoreng | 012 261 1500 |
| Marikana Openbare Biblioteek | Marikana | R Motlhabane | 014 572 3611 |
| Madibeng Munisipaliteit | Van Velden Straat, Madibeng | Ontvangs | 012 318 9500 |
| Madibeng Openbare Biblioteek | Van Velden Straat, Madibeng | Ina Annandale | 012 318 9318 |
| Rustenburg Plaaslike Owerheid | H/v Beyers Naude & Mandela Str, RTB | Maletsi Mako | 014 590 3551 |

| | | | |
|--------------------------------|--|-------------|--------------|
| Rustenburg Openbare Biblioteek | H/v Heystek & Thabo Mbeki, Rustenburg | Pieter Louw | 014 590 3295 |
| Bojanala District Municipality | H/v Beyers Naude & Fatima Bhayat Dr. RTB | Ontvangs | 014 590 4500 |

**Sperdatum vir registrasie as belanghebbende en geaffekteerde party:
Vrydag, 19 APRIL 2013**

 **srk** consulting

Inombolo ye DEDECT:NWP/EIA/08/2012

Inombolo yokukhangela DMR WPL: ML 8/95 & DMR Ref No for EPL: ML 3/96

ISIMEMO SOKUBHALISA NOKUNIKA IZIMVO

ILonmin Platinum Mine (Lonmin) isebenza njengeWestern Platinum Limited (WPL) ne-Eastern Platinum Limited (EPL). ILonmin ifuna ukwanda kummandla weLungelo lokuMba le-WPL ngenxa yomthamo wokugcina onganelanga weziseko zeentsalela zezimbiwa zazo ezikhoyo kwaye ke ngoko, iziseko zokugcina iintsalela zezimbiwa ezintsha ziyafuneka ukuvumela imisebenzi yokumba yexesha elizayo. Ukongeza, amaseko akhoyo anjengoluhlu lwemibhobho nezitishi zeempompo ziyafuneka ukuhambisa iintsalela zezimbiwa ukusuka kwiDama leeNtsalela zezimbiwa ze-EPL 1 ukuya kwisiHluzi sezimbiwa i-1 SHAFT UG2, ukusuka kwisiHluzi sezimbiwa i-UG2 ukuya kwisiHluzi sezimbiwa i-Rowland, isiHluzi sezimbiwa i-Rowland ukuya kwi-TD 6 kunye ne-TD8 neTD9 ezindululweyo, kwaye ulwandiso loluhlu lwemibhobho kufuneka lwenziwe ukusuka kwi-TD2 ukuya kwi-TD8 kwiziseko ezindululweyo ezitsha zeentsalela zezimbiwa, zibizwe ngokuba iDama leeNtsalela zezimbiwa 8 (Tailings Dam 8) (TD 8) ne-TD 9. Iziseko ezitsha ze-TD8 ne-TD9 ziza kunikeza indawo yocino lweentsalela zezimbiwa zemimandla yeLungelo lokuMba le-WPL ne-EPL zombini.

IProjekthi yeLonmin endululweyo imi malunga ne-4 km kumzantsi-mpuma weWonderkop. Ikwindawo kaMasipala weNgingqi waseMadibeng kwaye ingena kuMasipala weSithili saseBojanala. Ummandla weprojekthi ukufuphi neLokishi yaseWonderkop neLokishi yaseSegwaelane

| Izahlulo zomhlaba | Izahlulo zomhlaba | Izahlulo zomhlaba |
|--------------------------|--------------------------|--------------------------|
| Middelkraal 466 JQ RE 56 | Middelkraal 466 JQ RE 44 | Middelkraal 466 JQ RE 58 |
| Middelkraal 466 JQ RE 50 | Middelkraal 466 JQ RE 43 | Middelkraal 466 JQ RE 46 |
| Middelkraal 466 JQ RE 9 | Middelkraal 466 JQ RE 63 | Middelkraal 466 JQ RE 26 |
| Middelkraal 466 JQ RE 51 | Middelkraal 466 JQ RE 60 | Middelkraal 466 JQ RE 24 |
| Middelkraal 466 JQ RE 69 | Middelkraal 466 JQ RE 37 | Middelkraal 466 JQ RE 2 |
| Middelkraal 466 JQ RE 45 | | |

ILonmin ineeNgxelo zeNkqubo yoLawulo lwezeNdalo (EMPR) ngokuthobela uMthetho woPhuhliso looVimba beziMbiwa nePetroliyam (Mineral and Petroleum Resources Development Act) (MPRDA) (uMthetho 28 ka-2002). Le EMPR luxwebhu olubophelela ngokusemthethweni, kwaye yandlala ngokucacileyo imisebenzi yokumba yeLonmin neemfuneko zolawulo lwezendalo kuMgodi wePlatinam okwiNtshona noMgodi wePlatinam okwiMpuma.

Phambi kokuba iLonmin iqalise iprojekthi endululweyo, izicelo zogunyaziso lwezendalo kufuneka zenziwe:

- **UHLolo lweMpembelelo yezeNdalo (i-EIA) ngokwayamene noMthetho woLawulo lwezeNdalo weSizwe (uMthetho No. 107 ka-1998) (i-NEMA);**
- **IsiHlomelo se-EMP ngokwayamene ne-MPRDA (uMthetho 28 ka-2002)**
- **IsiCelo seLayisenisi yokuSetyenziswa kwaManzi (i-WULA) (Isihlomelo seLayisenisi yokuSetyenziswa kwaManzi eHlanganisiweyo) ngokwayamene noMthetho wezaManzi weSizwe (uMthetho No. 36 ka-1998) (i-NWA).**

ILonmin iqeshe i-SRK Consulting njengeGosa loHlolo lwezeNdalo elizimeleyo ukuqhuba ugunyaziso lwezendalo nenkqubo yokubandakanya abachaphazekayo abanxulumeneyo yezicelo ezilapha ngentla. Inkqubo iza kuhlangubezana neemfuneko ze-NEMA, MPRDA ne-NWA. Ugunyaziwe okhokelayo wekhomponenti le-NEMA leprojekthi liza kuba liSebe loPhuhliso loQoqosho, ezeNdalo, uLondolozo noKhenketho (Department of Economic Development, Environment, Conservation and Tourism) (DEDECT), kwiphondo loMntla-Ntshona. I-WULA iza kungeniswa kwiiOfisi zoMmandla zeSebe leMicimbi yezaManzi (Department of Water Affairs) (DWA) zePhondo loMntla-Ntshona nekhomponenti ye-MPRDA kwiiOfisi zoMmandla zeSebe looVimba beziMbiwa (Department of Mineral Resources) (DMR) zePhondo loMntla-Ntshona.

Abachaphazekayo bayamenywa ukuba babhalise njengamaQela anoMdlala naChaphazekayo (I&APs). Ukufumana ulwazi olungaphaya noXwebhu loLwazi loMlandu(BID), nceda uqhagamshelane no-:

Elna de Beer

Stakeholder Engagement Office

SRK Consulting, P O Box 55291, Northlands, 2116

Umnxeba: (011) 441 1111

Ifeksi: 086 5061737 i-imeyli: edebeer@srk.co.za

IBHIDI ikwafumaneka kwezi ndawo zoluntu zilandelayo newebhusayithi ye-SRK: www.srk.co.za

| Indawo kaWonke-wonke | Locality | Contact | Umxeba |
|--------------------------------------|--|----------------|--------------|
| Lonmin Reception | Marikana | Hazel Fiehn | 014 571 2182 |
| EPL Hostel | Marikana | David Makhema | 014 571 4439 |
| EPL main offices | Marikana | Hanlie Ryan | 014 571 2399 |
| Wonderkop Hostel Offices | Marikana | Patrick Molise | 014 571 3348 |
| Lonmin Community Centre | Mooinooi | Elize Smith | 014 571 4211 |
| Bapo Ba Mogale Traditional Authority | Marikana | M Mphoreng | 012 261 1500 |
| Marikana Public Library | Marikana | R Motlhabane | 014 572 3611 |
| Madibeng Local Municipality | Van Velden Street, Madibeng | Reception | 012 318 9500 |
| Madibeng Public Library | Van Velden Street, Madibeng | Ina Annandale | 012 318 9318 |
| Rustenburg Local Municipality | C/o Beyers Naude & Mandela Str, RTB | Maletsi Mako | 014 590 3551 |
| Rustenburg Public Library | C/o Heystek & Thabo Mbeki, Rustenburg | Pieter Louw | 014 590 3295 |
| Bojanala District Municipality | C/o Beyers Naude & Fatima Bhayat Dr. RTB | Reception | 014 590 4500 |

**Umhla wokugqibela wobhaliso njengeqela elinomdla nelichaphazelekayo:
Friday, 19 April 2013**

 srk consulting

DITUMELELO MO TIKOLOGONG LE THULAGANYO YA TLHABOLOLO YA BOTSAMAISI JWA TIKOLOGO MO GO DIRILWENG DITLHAGISO KA GA MAFELO A MANTŠHWA A A LEKANYEDITSWENG GO TLOGA GODIMO GO YA TLASE GA MMOGO LE DITHULAGANYETSO TSA MOEPO MO MOEPONG WA POLATINAMO MO BOPHIRIMA LE WA KWA BOTLHABA, MO POROFENSENG YA BOKONE BOPHIRIMA.

Nomore ya DEDECT: NWP/EIA/08/2012

Nomore ya tlhagiso ya DMR: WPL: ML 8/95 & DMR EPL: ML 3/96

TALETSO YA GO IKWADISA LE DITSHWAELO

Moepo wa Lonmin wa Polatinamo (Lonmin) o dira jaaka moepo wa Setlamo wa Polatinamo kwa Bophirima, Western Platinum Limited (WPL) le moepo wa Setlamo wa Polatinamo wa kwa Botlhaba, Eastern Platinum Limited (EPL). Moepo wa Lonmin o batla go oketsega kgotsa go gola go ya ka fa ntlheng e e nepagetseng ya moepo mo WPL ka ntlha ya lefelo le le lekanyeditsweng la bobolokelo jwa dibebofatsi, ka jalo, go tlhokega bobolokelo jo bo lekanyeditsweng jwa dibebofatsi tse dintšhwa go tloga kwa godimo go ya kwa tlase go tla go letlelela ditiro tsa moepo gore di kgone go diragala mo nakong e e tlang. Go oketsa mo ntlheng e, dithulaganyetso tse di jaaka mesima ya diphaephe le diteišene tsa dipompo le tsona di a batlega go tla go rwa dithailing go tswa kwa letamong dithailing la 1 la EPL go ya go SHAFT1 UG2 Concentrator, go tloga go UG2 Concentrator go ya go Concentrator ya Rowland, go tloga mo go Concentrator ya Rowland go ya go TD 6, TD8 le TD9 tse di tlhagisitsweng, mme koketso ya mesima ya diphaephe e tshwanetse go tshwaraganngwa go tloga mo go TD2 go ya go TD8 go fitlha mo dibebofatsing tse dintšhwa tsa dithailing, gore di tle di bidiwe gore ke dithailing tsa Letamo la 8, Tailings Dam 8 (TD 8) le tsa TD 9. Dibebofatsi tse dintšhwa tsa TD8 le tsa TD9 ke tsona tse di tla nnang le bobolokelo jwa dithailing mo dikarolong tse di nang le ditshwanelo tsa moepo tsa go tshwana le WPL le EPL.

Porojeke e e tlhagisitsweng mo Lonmin e dikilomitara tse di ka lekanang 4 go ya kwa Borwa Botlhaba jwa Wonderkop. Porojeke e, e mo tikologong ya Mmasepala wa Selegae mo Madibeng, mme e fitlha le mo Kgaolong ya Mmasepala wa Bojanala. Tikologo e porojeke e leng mo go yona e, e kadile gaufi le metsesetoropo e mebedi, e leng, wa Wonderkop le wa Segwaelane.

| Dikarolo tsa naga | Dikarolo tsa naga | Dikarolo tsa naga |
|--------------------------|--------------------------|--------------------------|
| Middelkraal 466 JQ RE 56 | Middelkraal 466 JQ RE 44 | Middelkraal 466 JQ RE 58 |
| Middelkraal 466 JQ RE 50 | Middelkraal 466 JQ RE 43 | Middelkraal 466 JQ RE 46 |
| Middelkraal 466 JQ RE 9 | Middelkraal 466 JQ RE 63 | Middelkraal 466 JQ RE 26 |
| Middelkraal 466 JQ RE 51 | Middelkraal 466 JQ RE 60 | Middelkraal 466 JQ RE24 |
| Middelkraal 466 JQ RE 69 | Middelkraal 466 JQ RE 37 | Middelkraal 466 JQ RE 2 |
| Middelkraal 466 JQ RE 45 | | |

Lonmin e na le Dipegele tse di rebotsweng tsa Thulaganyo ya Botsamaisi jwa Tikologo (EMPR) jo bo tsamaisanang le Molao wa Tlhabololo ya Metswedi ya Diminerale le Peteroleamo (MPRDA) (Molao wa 28 wa 2002). EMPR e, ke tokomane e e leng mo molaong e e go tlamang, mme e na le dintlha tsothle ka botlalo tse di malebana le ditiro tsa moepo wa Lonmin gape le ditlhokego tsa botsamaisi jwa tikologo mo moepong wa Polatinamo o o kwa Bophirima le o o kwa Botlhaba.

Pele Lonmin e ka simolola ka ga porojeke e e tlhagisitsweng, dikopo tse di latelang tsa ditumelelano tsa tikologo di tshwanetse go tlhokomelwa:

- **Kutlwalo ya Tekanyetso ya Tikologo (EIA) go ya ka Molao wa Botsamaisi wa Tikologo ya Setšhaba (Nomore ya Molao, 107 wa 1998) (NEMA);**
- **Tlhabololo ya EMP go ya ka MPRDA (Molao wa 28 wa 2002);**
- **Kopo ya Lokwalo lwa Tiriso ya Metsi (WULA) (Tlhabololo ya lokwalo lwa Togaganyo ya Tiriso ya Metsi) go ya ka Molao wa Setšhaba wa Metsi (Nomore ya Molao 36 wa 1998) (NWA).**

Lonmin e ithophetse *SRK Consulting* jaaka Bokatisi jo o ikemetseng ka bobona mo Tekanyetsong ya Tikologo go tla go tsena mo botsamaising jwa ditumelelano tsa tikologo gape le tse di amanang le tshwaragano ya banni –le- seabe mo go tsa kgwebo mo dikopong tse di fa godimo fa. Tsamaiso e tla tshwanela ke go obamela ditlhokego tsa NEMA, MPRDA le tsa NWA. Bolaodi jwa NEMA jo bo eteletsweng pele mo karolong ya porojeke e tla nna Lefapha la Tlhabololo ya Ikonomi (*Department of Economic Development*), la Tikologo, Tshomarelo le Bojanala (*Environment, Conservation and Tourism*) (DEDECT), mo porofenseng ya Bokone Bophirima. WULA e tla neelwa Lefapha la Merero ya Metsi (DWA), dikantor tsa Sedika mo Porofenseng ya Bokone Bophirima gape le karolo ya MPRDA le yona e tla ya go Lefapha la Metswedi ya Diminerale (DMR) le le mo dikantorong tsa Sedika mo Porofenseng ya Bokone Bophirima.

Banni –le – seabe mo go tsa kgwebo le bona ba a lalediwa go tla go ikwadisa jaaka batho ba ba nang le kgatlhego gape e le ba ba amegang (I&APs). Go bona tshedimosetso e nngwe gape le Tokomane ya Tshedimosetso ya. Maitshetlego (BID), tsweetswee, ikopanye le:

Elna de Beer, Kantoro ya monni –le- seabe mo go tsa kgwebo;
SRK Consulting, P O Box 55291, Northlands, 2116
Mogala : (011) 441 1111, Fekese: 086 5061737, Email: edebeer@srk.co.za

Tokomane ya Tshedimosetso ya Maitshetlego (BID) e ka bonwa le mo mafelong a botlhe a a latelang ga pe le mo webosaeteng ya SRK: www.srk.co.za

| Mafelo a botlhe | Locality | Telephone |
|---|--|--------------|
| Boamogelo kwa LPD mo Lonmin | Marikana | 014 571 2182 |
| Hosetele ya EPL | Marikana | 014 571 4439 |
| Dikatontorokgolo tsa EPL | Marikana | 014 571 2399 |
| Dikantoro tsa hosetele ya Wonderkop | Marikana | 014 571 3348 |
| Borakanelo jwa Setshaba sa Mooinooi mo Lonmin | Mooinooi | 014 571 4211 |
| Dikantoro tsa Bapo ba-Mogale, | Marikana | 012 261 1500 |
| Marikana Public Library | Marikana | 014 572 3611 |
| Madibeng Local Municipality | Van Velden Street, Madibeng | 012 318 9500 |
| Madibeng Public Library | Van Velden Street, Madibeng | 012 318 9318 |
| Rustenburg Local Municipality | C/o Beyers Naude & Mandela Str, RTB | 014 590 3551 |
| Rustenburg Public Library | C/o Heystek & Thabo Mbeki, Rustenburg | 014 590 3295 |
| Bojanala District Municipality | C/o Beyers Naude & Fatima Bhayat Dr. RTB | 014 590 4500 |

Letlha le le nepagetseng la boikwadiso jaaka mongwe yo o nang le kgatlhego le yo o amegang : FRIDAY, 19 April 2013

 **srk consulting**

Annexure 6: Project Announcement: Advertisements

Annexure 7: Project Announcement: Focus Group Meetings



Environmental Authorisations and Environmental Management Programme Amendment for the proposed new Tailings Storage facilities and associated infrastructure at Western Platinum Mine (WPL) and Eastern Platinum Mine (EPL), North West

DEDECT Number: NWP/EIA/08/2012
DMR Ref No for WPL: ML8/95 and DMR Ref No for EPL: ML 3/96

Meeting held with Bapo Ba Mogale Traditional Authority (BBMTA) Administrator, Mr. I. S. Monamode

Held at BBMTA in Bapong, on 11 March 2013

1 Opening and Introduction

Motlana Mphoreng opened the meeting and introduced the Administrator, Mr. I.S. Monamode. Victor Tseka (Lonmin) thanked Mr. Mphoreng for arranging the meeting and thanked the Administrator for meeting with Lonmin and SRK Consulting. See attendance list of meeting attached as **Appendix A**

2 Purpose of the meeting

Victor Tseka and Elna de Beer (SRK Consulting) explained the purpose of the meeting as follows:

Lonmin operates both Western Platinum Limited (WPL) and Eastern Platinum Limited (EPL). As a result of limited storage capacity, new tailings storage facilities and associated infrastructure are required. This includes the construction of:

- Tailings Dam (TD) 8 and TD9 on WPL
- Construction of new and the upgrading of existing pipelines for the transport of tailings from existing concentrators to the new Tailings Dams
- Pump stations, and
- A return water dam

Before Lonmin can commence with the project an environmental authorisation process must be undertaken and have appointed SRK Consulting as the Environmental Assessment Practitioner to undertake the Environmental Impact Assessment and the associated stakeholder engagement process. The project will be announced shortly and Lonmin would like to consult with key stakeholders as part of the process.

The purpose of the meeting is to discuss the project and provide the ward councillors and Municipalities with background information related to the project and to introduce the SRK Consulting and Lonmin project team. Information regarding the environmental authorisation processes being followed and how the Municipality and ward councillors can contribute to the process will also be provided.

BBMTA is respected and recognised as representative of the communities. It is important that protocol in this regard is followed and it is important to understand how the communities of Segwaelane and Wonderkop should be approached in this process. SRK Consulting and Lonmin are requesting advice from the BBMTA Administrator on how to approach the Segwaelane and

Wonderkop communities in order to share information and establish a process to maintain their involvement throughout the environmental authorisation process.

3 Presentation and discussion: Lonmin new TSF and associated infrastructure

Mandy Jubileus (Lonmin) used the Background Information Document (BID) and announcement letter to explain the proposed Lonmin project. See attached as **Appendix B**.

The following was agreed:

- *Lonmin would develop a project map indicating all their operations, the proposed new project components and infrastructure as well as features in the community as part of assisting the Administrator to know where the project is located.*
- *Victor Tseka will provide this map to Motlana Mphoreng; and*
- *A site visit to be arranged for the Administrator to be introduced to Lonmin's operations in the area.*

4 Presentation and discussion: Environmental authorisation and stakeholder engagement process

Elna de Beer (SRK Consulting) presented the environmental authorisation and stakeholder engagement process as per the BID attached as **Appendix B**.

The following was agreed upon:

- *BBMTA Office will be a public place for the distribution of documentation to communities throughout the environmental authorisation process;*
- *Motlana Mphoreng will arrange meetings with the Sub-Councils of Segswaelane and Wonderkop respectively and the project will be introduced;*
- *Motlana Mphoreng will also attend the meetings with the Sub-Councils.*
- *Elna de Beer will make additional BIDs and announcement letters available to the BBMTA.*

5 General

SRK Consulting and Lonmin expressed their appreciation for the co-operation received from the BBMTA

Meeting was closed at 11h00.

Written by:

SRK Consulting - Certified Electronic Signature

 436739/41367/Minutes
 6495-9921-1463-DEEL
 This signature has been printed digitally. The Administrator is permitted on for its use for this document. The details are stored in the SRK Signature Database.

E De Beer, Senior Stakeholder Engagement Specialist

APPENDICES

Appendix A: Attendance list

Appendix B: Background Information Document and announcement letter

Appendix A: Attendance list

EXTERNAL AFFAIRS DEPARTMENT

ATTENDANCE REGISTER

LONMIN

MEETING WITH: BAPO BA MOGALE TA.

DATE: 11 MARCH 2013

VENUE: BAPO OFFICE

TIME: 10h00 - 11h00.



| Name & Surname | Company/ Representation | Tel/Mobile | Fax | Email | Signature |
|-------------------|----------------------------|------------|--------------|---------------------------------------|-----------------------|
| I.S. MONTAGANI | BBMTA | 0722878830 | 012 261 1503 | | <i>I.S. Montagani</i> |
| Motlana Mphahlele | BBMTA | 0767504501 | 012 261 1503 | Motlana.mphahlele@bapoba.mogale.co.za | <i>M. Mphahlele</i> |
| Victor Tseka | Lonmin | 0832940431 | 014 571 2037 | victor.tseka@lonmin.com | <i>V. Tseka</i> |
| Shade Beer. | SRK Consulting | 0824906596 | — | edbeke@srk.co.za | <i>Shade Beer</i> |
| Mandy Jubekus | Lonmin | 0718825788 | | Mandy.Jubekus@Lonmin.com | <i>M. Jubekus</i> |
| | | | | | |
| | | | | | |

Appendix B: BID and announcement documentation



Environmental Authorisations and Environmental Management Programme Amendment for the proposed new Tailings Storage facilities and associated infrastructure at Western Platinum Mine (WPL) and Eastern Platinum Mine (EPL), North West

DEDECT Number: NWP/EIA/08/2012
DMR Ref No for WPL: ML8/95 and DMR Ref No for EPL: ML 3/96

Proceedings for the Focus Group Meeting held with Ward Councillors and Local Municipalities

Held at Lonmin Moinooi Community Office, on 14 March 2013

1 Opening and Welcome

Victor Tseka (Lonmin) opened the meeting and welcomed everybody present. The draft Agenda was distributed – See **Appendix A**.

2 Health and Safety moment

Victor Tseka explained the importance of safety and in particular safety during the upcoming Easter weekend when people are driving far.

3 Introductions and attendance

Victor Tseka requested attendees to introduce themselves.

See attendance list attached as **Appendix B**.

4 Purpose of the meeting

Victor Tseka and Elna de Beer (SRK Consulting) explained the purpose of the meeting as follows:

Lonmin operates both Western Platinum Limited (WPL) and Eastern Platinum Limited (EPL). As a result of limited storage capacity, new tailings storage facilities and associated infrastructure are required. This includes the construction of:

- Tailings Dam (TD) 8 and TD9 on WPL
- Construction of new and the upgrading of existing pipelines for the transport of tailings from existing concentrators to the new Tailings Dams
- Pump stations, and
- A return water dam

Before Lonmin can commence with the project an environmental authorisation process must be undertaken and have appointed SRK Consulting as the Environmental Assessment Practitioner to undertake the Environmental Impact Assessment and the associated stakeholder engagement process. The project will be announced shortly and Lonmin would like to consult with key stakeholders as part of the process.

Contact has been established with Mr P Makgabo, the Cluster Chairperson and Councillor for Ward 31 and he assisted in arranging a meeting with the relevant Ward Councillors for Wards 25,

26, 27 and 28. SRK Consulting has also confirmed that the Ward Councillors of Rustenburg Local Municipality (Wards 31 and 32 adjacent to the proposed project area) will be attending the meeting after consultation with Mr P Makgabo.

The purpose of the meeting is to discuss the project and provide the ward councillors and Municipalities with background information related to the project and to introduce the SRK Consulting and Lonmin project team. Information regarding the environmental authorisation processes being followed and how the Municipality and ward councillors can contribute to the process will also be provided.

Information packs in four languages were distributed to the Madibeng Ward Councillors of Ward 7, 25, 26, 27, 28, 31, and 32 via Mr Makgabo and to the Rustenburg Ward Councillors for Wards 31 and 32 via Lonmin.

The information contained the following documents:

| Documents distributed | English | Setswana | Xhosa | Afrikaans |
|---|---------|----------|-------|-----------|
| Background Information Document (BID) | 5 | 5 | 5 | 5 |
| Announcement Letter | 5 | 5 | 5 | 5 |
| Interested and Affected Part Registration sheet | 5 | 5 | 5 | 5 |

5 Presentation and discussion: Lonmin new TSF and associated infrastructure

Gareth Smith presented the Lonmin proposed project. See presentation attached as **Appendix C**.

Matters discussed have been documented in Comment and Response Report format. See attached as **Appendix E**

6 Presentation and discussion: Environmental authorisation and stakeholder engagement process

Elna de Beer (SRK Consulting) presented the environmental authorisation and stakeholder engagement process. See presentation attached as **Appendix D**

Matters discussed have been documented in Comment and Response Report format. See attached as **Appendix E**

7 General

No general matters were discussed

Meeting was closed at 13h00.

Written by:

SRK Consulting - Certified Electronic Signature

 43673941367/M/Inuse6
 30489-9921-1463-DEEL
 This signature has been printed digitally. For more information, see the permission for its use for this document. The details are stored in the SRK Signature Database.

E De Beer, Senior Stakeholder Engagement Specialist

APPENDICES

Appendix A: Agenda

Appendix B: Attendance List

Appendix C: Lonmin presentation

Appendix D: SRK Consulting presentation

Appendix E: Proceedings in CRR format

Appendix A: Agenda

**ENVIRONMENTAL AUTHORISATIONS AND ENVIRONMENTAL MANAGEMENT PROGRAMME AMENDMENT
FOR PROPOSED NEW TAILINGS DAMS AND ASSOCIATED INFRASTRUCTURE AT WESTERN PLATINUM MINE
AND EASTERN PLATINUM MINE, NORTH WEST PROVINCE**

DEDECT Number: NWP/EIA/08/2012

DMR Ref No for WPL: ML 8/95 & DMR Ref No for EPL: ML 3/96

Announcement meetings with key stakeholders

March 2013

Draft AGENDA

Facilitator: Victor Tseka, Lonmin and Elna de Beer, SRK Consulting

- 1. Opening and Welcome**
- 2. Health and safety moment**
- 3. Introductions**
- 4. Purpose of the meeting**
- 5. Presentation and discussion: Lonmin new tailings dams and associated infrastructure project**
- 6. Presentation and discussion: Environmental authorisation and stakeholder engagement process**
- 7. General**
- 8. Closure**

Appendix B: Attendance lists

LONMIN PROJECT

ATTENDANCE REGISTER

Meeting : WARD COUNSELLORS & OFFICIALS: (MADIBENG + RUMI)
 Date : 14 MARCH 2013
 Venue : LONMIN COMMUNITY CENTRE, MOOI NOOI

| TITLE | FIRST NAME | SURNAME | ORGANISATION (Please do not use acronyms) | POSTAL ADDRESS | CONTACT DETAILS |
|-------|------------|-----------|---|---------------------------------|--|
| | | | | | Tel No: Fax No: N/A Cell No: 0780029314 E-mail: N/A Signature: [Signature] |
| Mr. | NELSON | MPONGHANA | MADIBENG W-26 | Box 115 W/KOP | Tel No: Fax No: Cell No: 0781298122 E-mail: Signature: [Signature] |
| MRS | JOSEPHINE | MOSOPHLE | MADIBENG W32 | 0276 P. O. BOX 204 SIKHOLENE | Tel No: Fax No: Cell No: E-mail: Signature: [Signature] |
| MRS | PRAV | SEWMOHAN | SRE Community | Pobox | Tel No: Fax No: Cell No: 0836298835 E-mail: [Signature] |

①

| TITLE | FIRST NAME | SURNAME | ORGANISATION (Please do not use acronyms) | POSTAL ADDRESS | CONTACT DETAILS |
|-------|------------|---------|---|---------------------------------------|---|
| Mrs. | Hazel | Fiehn | Lanmin - LEC Land & Waste | Private bag x508 Marikana 0284 | Tel No: 081 031 4477 Fax No: Cell No: 083 259-0507 E-mail: hazel.fiehn@lanmin.com Signature: <i>Hazel</i> |
| Mr. | Gareth | Smith | Lanmin Process Division - Process Manager - Concentrators | Private Bag x 508 Marikana 0284 | Tel No: 014 571 3280 Fax No: Cell No: 083 - 294 - 0301 E-mail: garethsmith@lanmin.com Signature: <i>Gareth</i> |
| Ms. | Azi | McGee | Lanmin Process ENGINEERING MANAGER | PRIVATE BAG X508 MARIKANA 0284 | Tel No: 014 571 4867. Fax No: 0866 343990 Cell No: 0736213493 E-mail: ALAN.MCGEE@LANMIN.COM Signature: <i>Azi</i> |
| MS. | EUNA | DE BEER | SRK CONSULTING. | | Tel No: 011-4411111 Fax No: Cell No: 082-4906596 E-mail: edebeer@srk.co.za Signature: <i>Euna</i> |

3

Appendix C: Lonmin presentation



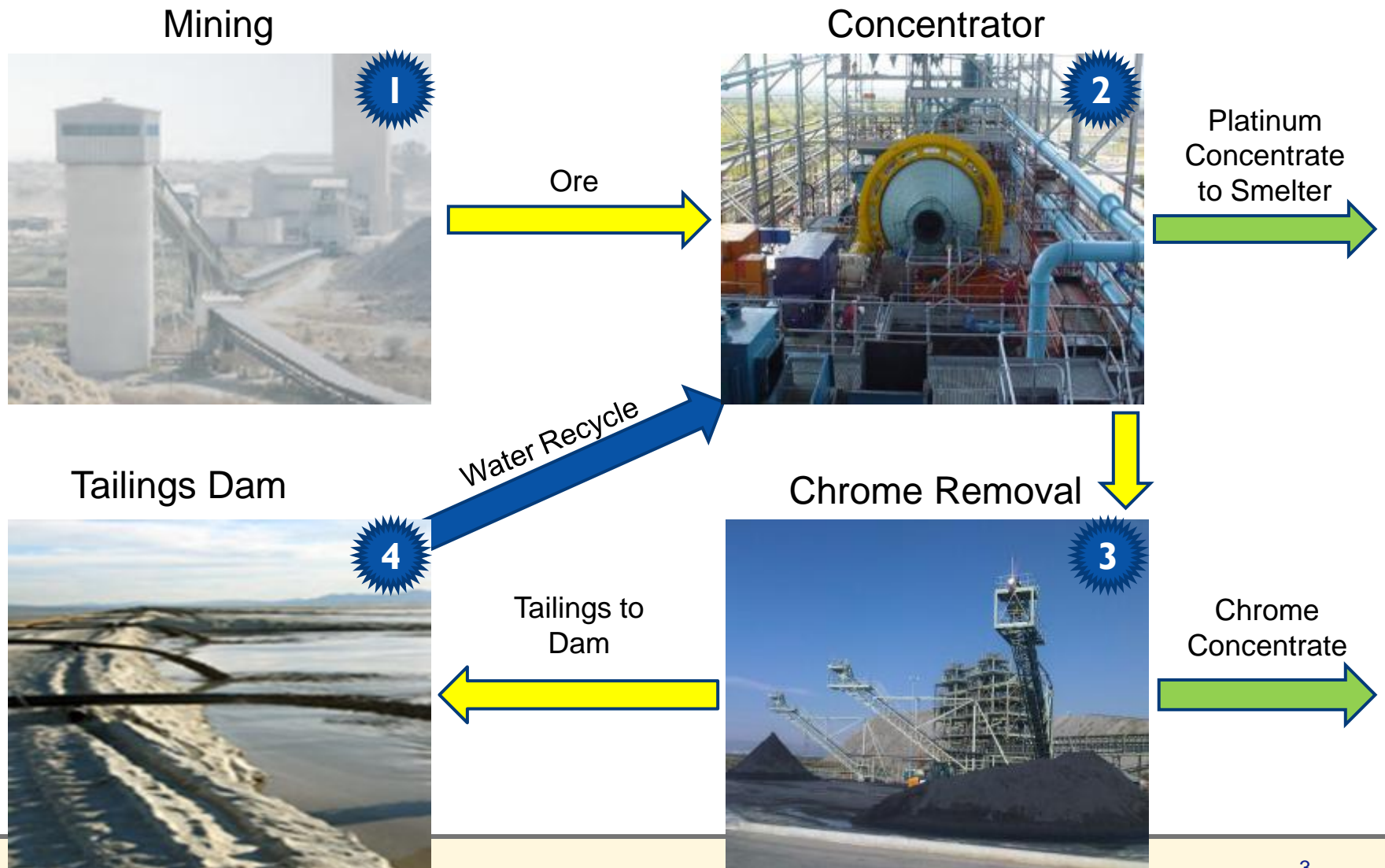
Tailings Dams – An Introduction

14th of March 2013

Context

- **Platinum production generates waste in the form of tailings**
- **Tailings are deposited on structures known as tailings dams**
- **Some of Lonmin's existing tailings dams are approaching the end of their storage capacity and need replacement soon (next 3-5 years)**
- **New tailings dams need to be constructed to ensure storage capacity for Lonmin's tailings for Life of Mine (50 years +)**
- **Without these tailings facilities, platinum production will not be possible.**

Basic PGM Flow Sheet

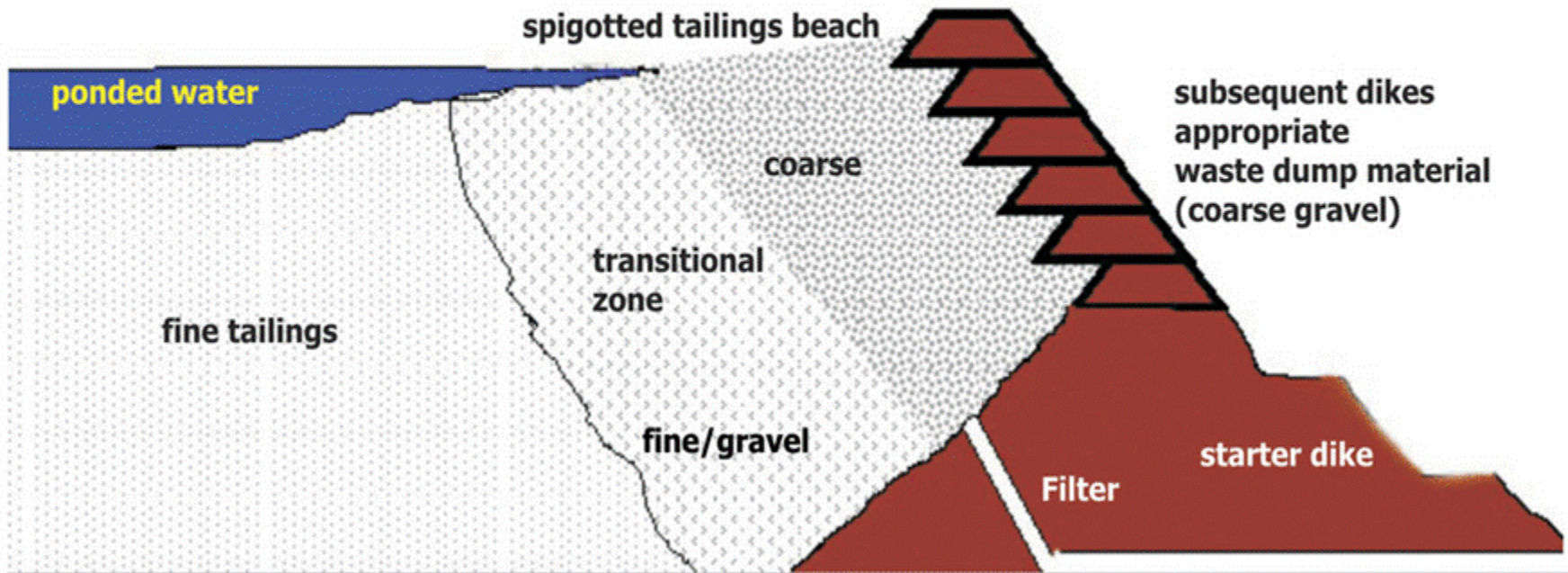


Existing Tailings Dam 5 - Nearing End of Life



Construction of a Tailings Dam

Upstream construction of a tailings dam



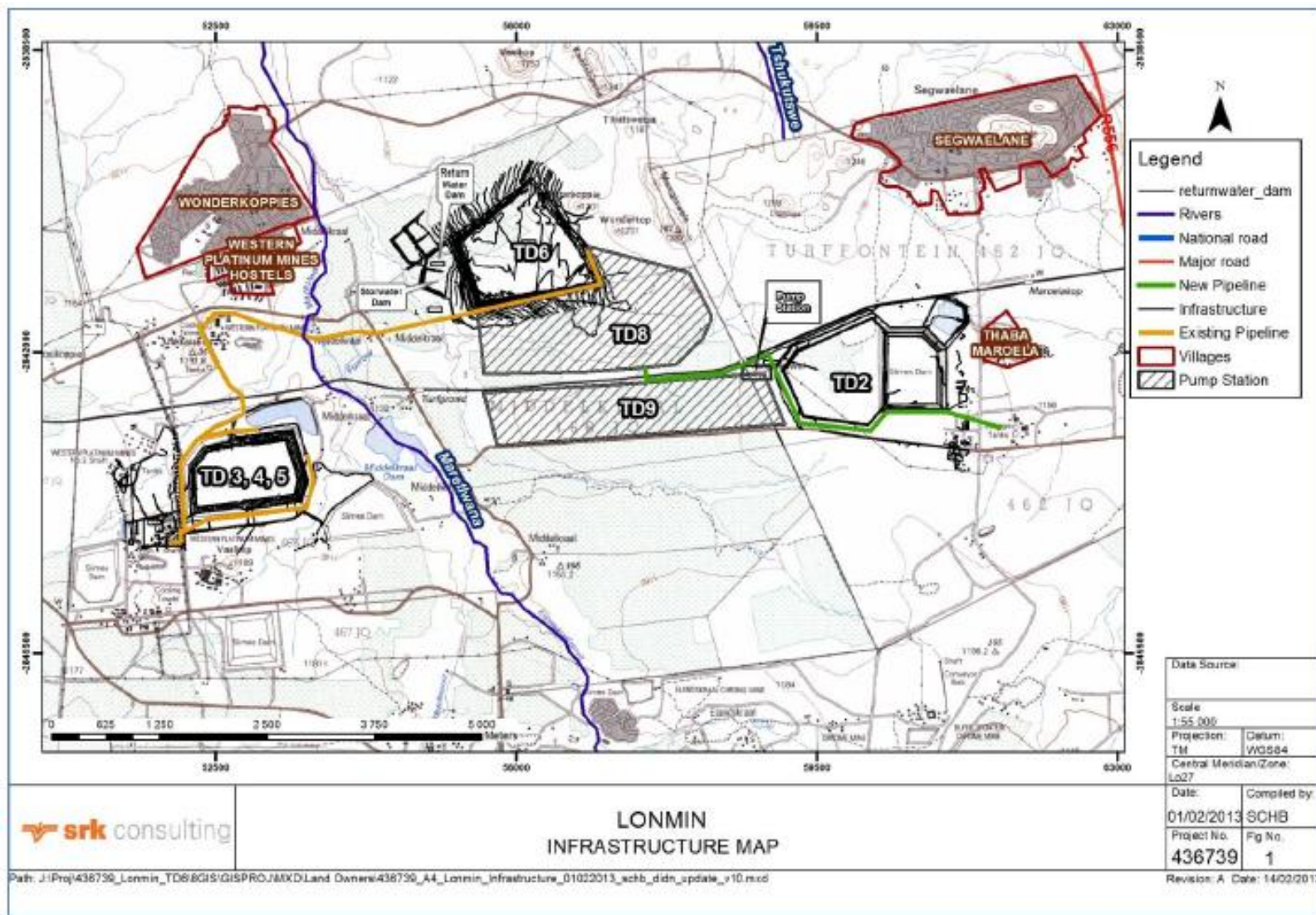
Tailings Dam 6 - Example of a New Dam



Water collection from dam



Proposed Tailings Dams and Infrastructure



Project Milestones

- **Construction of the Dam to commence July 2014**
- **First production / deposition by December 2015**
- **Deposition to continue for Life of Mine (50 years +)**