

Management Team



Simon Scott
Acting Chief Executive

Simon joined Lonmin and the Board in September 2010, became CFO in November 2010 and was appointed as Acting CEO on 24 August 2012 in view of Mr Farmer's illness. He is a graduate with accounting and commerce degrees from the University of the Witwatersrand, and has also attended the management development program at the University of Cape Town. A South African registered chartered accountant, he has held a number of financial management roles in South Africa with local and global employers including over eight years with Anglo American. Most recently he was CFO of the JSE-listed Aveng Limited, a globally active engineering and construction group with significant involvement in the mining sector.



Albert Jamieson
Chief Commercial Officer

Albert joined Lonmin in 1989 after 8 years at Impala Platinum, where he was responsible for their concentrator operations. At Lonmin, he has held a number of senior management and executive positions in the mine production and commercial areas of the business including responsibility for investments in Africa, South America, North America, Australia and Japan. The commercial portfolio currently comprises business development, strategy, marketing and sales, exploration, legal and life of business planning. Albert has a BSc in Minerals Engineering from the University of Birmingham and an MBA from the University of Cape Town.



Barnard Mokwena
EVP, Human Capital & External Affairs

Barnard joined Lonmin in October 2005 as a Group Manager and was subsequently promoted to his current position. He previously worked in senior management positions in a range of sectors for a number of companies including Sentech, the South African Rail Commuter Corporation and the National Lottery Operator (UTHINGO). He holds a BA Phil from Urban Pontifical University, an MA Licentiate from Gregorian University and an EDP from Pretoria.



Mark Munroe
EVP, Mining

Mark joined Lonmin in March 2008 in the Mining business, becoming VP Capital Projects & Engineering before being appointed as EVP Mining in June 2009. Mark joined Lonmin from DRDGold, where he spent six years, holding a number of senior management positions including General Manager of DRDGold and CEO of DRDCapital. Prior to that, he worked for AngloGold for 12 years. He is a mining engineer and also has a degree in economics.



Thandeka Ncube
Business Transformation Manager, Shanduka Resources

Thandeka works with Shanduka's investee companies advising on transformation and broad based empowerment. She holds a Social Sciences degree from the City University of New York and an MBA from Henley Business School. She began her career working with various government institutions, developing strategy and policy for small and medium enterprises, then joined the retail banking side of Standard Bank, where she again focussed on the needs of SMEs.



Natascha Viljoen
EVP, Process Division

Natascha joined Lonmin in 2008 from BHP Billiton, where she was General Manager for Klipspruit mine. Her initial responsibility was for managing Lonmin's concentrators, and in May 2011 she was promoted to her current role, covering all concentrating, smelting and refining operations. She holds an engineering degree and is currently busy with an executive MBA with University of Cape Town. Her career stretches over various commodities and disciplines in the mining industry with 9 years in senior management roles. Before BHP Billiton she held positions with Anglo American Platinum and AngloGold.

Disclaimer

This presentation, which is personal to the recipient, has been issued by Lonmin. This presentation includes forward-looking statements. All statements other than statements of historical fact included in this announcement, including without limitation those regarding Lonmin's plans, objectives and expected performance, are forward-looking statements. Lonmin has based these forward-looking statements on its current expectations and projections about future events, including numerous assumptions regarding its present and future business strategies, operations, and the environment in which it will operate in the future. Forward-looking statements generally can be identified by the use of forward-looking terminology such as 'ambition', 'may', 'will', 'could', 'would', 'expect', 'intend', 'estimate', 'anticipate', 'believe', 'plan', 'seek' or 'continue', or negative forms or variations of similar terminology. Such forward-looking statements involve known and unknown risks, uncertainties, assumptions and other factors related to Lonmin, including, among other factors: (1) material adverse changes in economic conditions generally or in relevant markets or industries in particular; (2) fluctuations in demand and pricing in the mineral resource industry and fluctuations in exchange rates; (3) future regulatory and legislative actions and conditions affecting Lonmin's operating areas; (4) obtaining and retaining skilled workers and key executives; and (5) acts of war and terrorism. By their nature, forward-looking statements involve risks, uncertainties and assumptions and many relate to factors which are beyond Lonmin's control, such as future market conditions and the behaviour of other market participants. Actual results may differ materially from those expressed in forward-looking statements. Given these risks, uncertainties, and assumptions, you are cautioned not to put undue reliance on any forward-looking statements. In addition, the inclusion of such forward-looking statements should under no circumstances be regarded as a representation by Lonmin that Lonmin will achieve any results set out in such statements or that the underlying assumptions used will in fact be the case. Other than as required by applicable law or the applicable rules of any exchange on which Lonmin's securities may be listed, Lonmin has no intention or obligation to update or revise any forward-looking statements included in this presentation after the publication of this presentation. This presentation is for information only and does not constitute or form part of any offer or invitation to sell, or any solicitation of any offer to purchase, any shares in Lonmin or any other securities, nor shall it or any part of it nor the fact of its distribution form the basis of, or be relied upon in connection with, any contract or investment decision related thereto. Information supplied by host presenters may not be used, referenced or published without the prior written consent of the author of the presentations.

Appendix D: SRK Consulting presentation

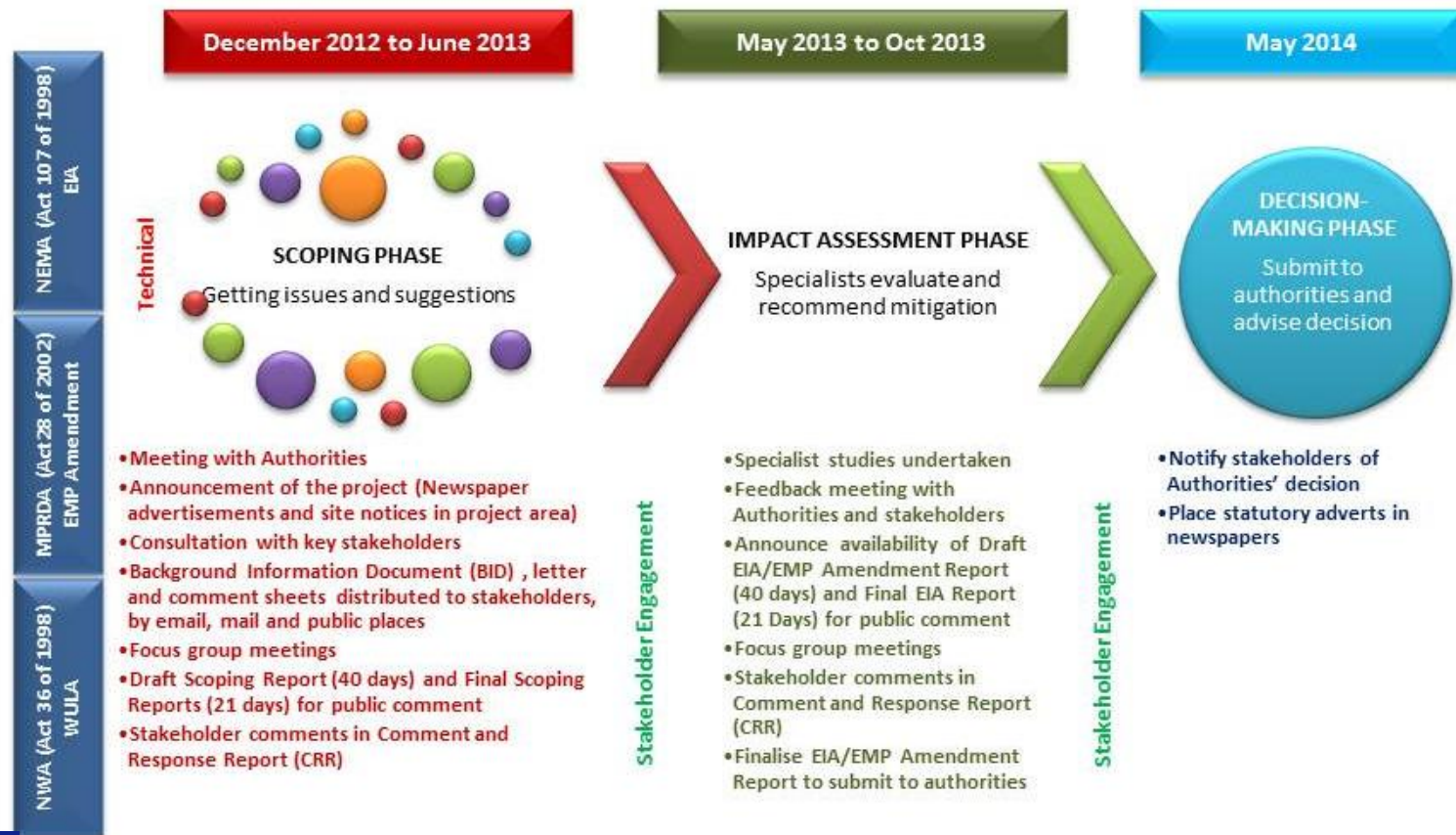
**ENVIRONMENTAL AUTHORISATIONS FOR THE PROPOSED NEW TAILINGS
STORAGE FACILITIES (TD8 AND TD9) AND ASSOCIATED
INFRASTRUCTURE AT LONMIN'S WESTERN PLATINUM MINE AND
EASTERN PLATINUM MINE, NORTH WEST PROVINCE**

**STAKEHOLDER ENGAGEMENT
Announcement**



The authorisation process

ENVIRONMENTAL AUTHORISATION AND ASSOCIATED STAKEHOLDER ENGAGEMENT PROCESS



Our roles

- **Lonmin: Applicant that has requested permitting (EIA, EMP Amendment and WULA amendment) to undertake the proposed project from DMR, DEDECT and DWA**
- **SRK Consulting: appointed in terms of the law as independent Environmental Assessment Practitioner to assess the potential impacts of the proposed project**

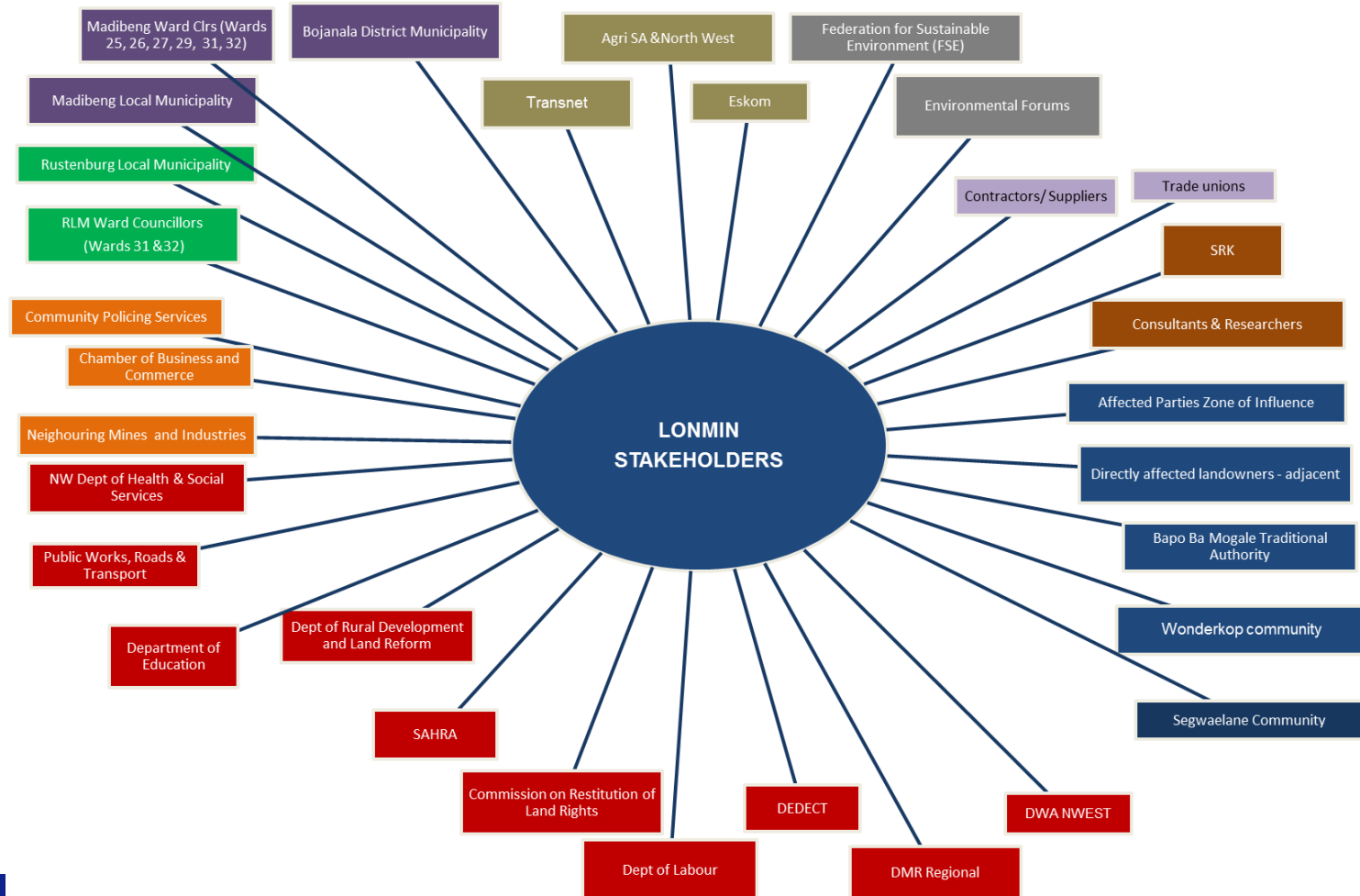
Government's roles

- **DMR, DEDECT & DWA: Decision-making authorities in the permitting process**
- **District and Local Municipalities: Commenting authorities in terms of the law and will be required to formally comment on the proposed project during various stages of the process**

Role of ward councillors and municipalities

- Represent people and government
- Right to know what is happening in and around constituencies
- Share information in wards
- Participate in legal process as it unfolds
- Keep constituency informed

Who are the stakeholders?



Who are the Municipalities involved?

Bojanala District Municipality

Madibeng Local Municipality (Wards 7, 25, 26, 27, 28, 29, 31 and 32)

Rustenburg Local Municipality (Wards 31 and 32)

Which Traditional Authority is involved?

Bapo Ba Mogale Traditional Authority

Segwaelane

Bapong

Wonderkop

Why are we here today?

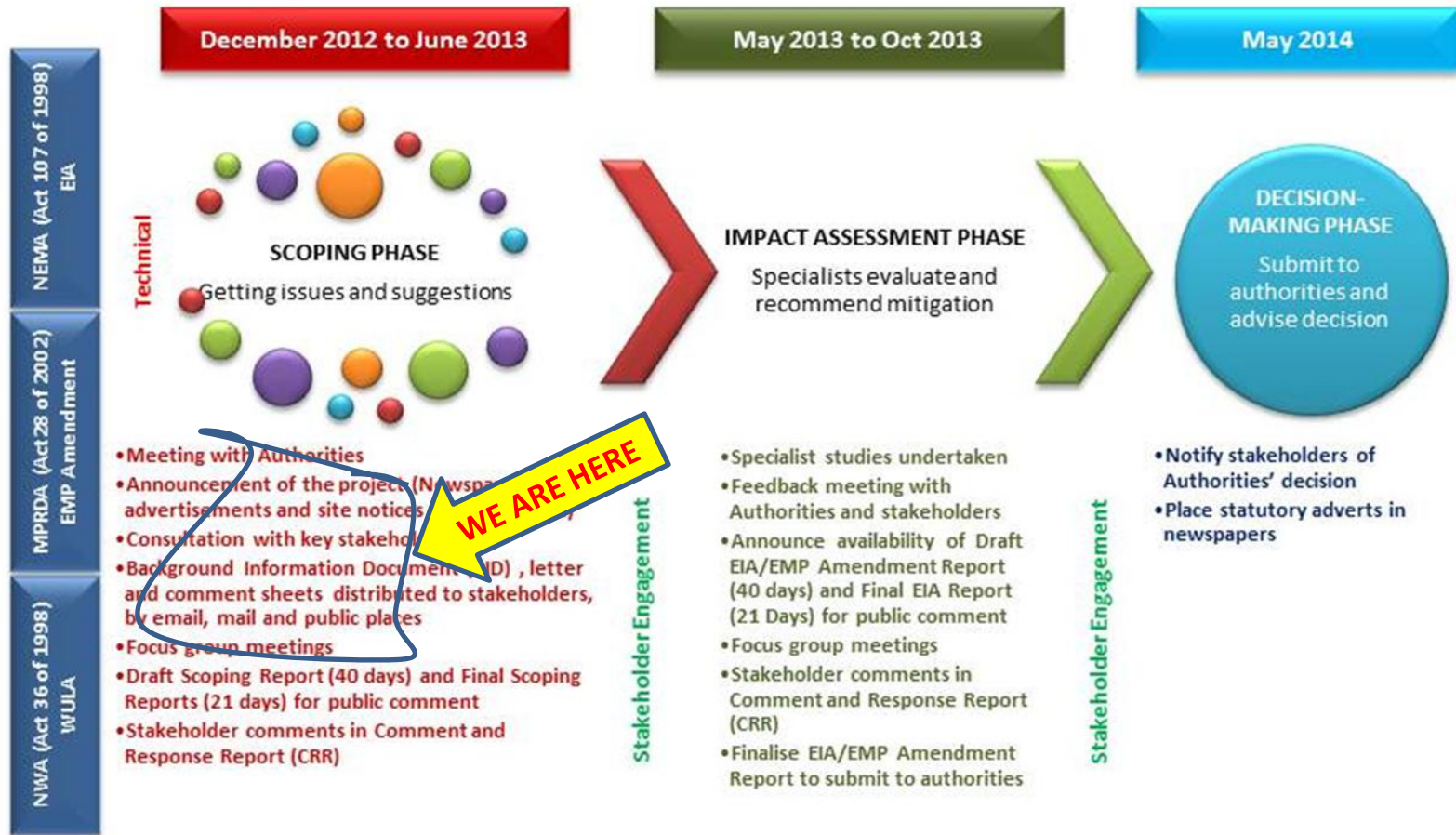
- Inform ward councillors of the announcement of the proposed project
- Share background information of the project and to get input of ward councillors
- Involve the ward councillors from the beginning of the process
- Establish a platform where SRK Consulting can provide information and opportunity for ward councillors and municipalities to participate in the process throughout the EIA

What is happening now?

Announcing the proposed project as legally required with:

- **Advertisements in Rustenburg Herald & Britspos**
- **Site notices (Setswana, Xhosa, English & Afrikaans)**
- **Public Places where information is accessible**
- **Information packs to ward councillors and stakeholders**
- **Letters/emails to stakeholders announcing the proposed project**
- **Meetings with Bapo Ba Mogale, Ward Councillors**

ENVIRONMENTAL AUTHORISATION AND ASSOCIATED STAKEHOLDER ENGAGEMENT PROCESS



What will happen next?

- All comments received into a Comment and Response Report as legally required
- All meetings documented as legally required
- Draft Scoping Report (DSR) available to public for 40 days to comment on – all will be notified
- Meetings to discuss DSR
- Final Scoping Report (FSR) – 21 days
- Submit FSR to authorities
- When FSR is accepted by authorities, next phase (impact assessment) will begin and stakeholders will be notified

***THANK YOU FOR YOUR ATTENDANCE
WE LOOK FORWARD TO YOUR
CONTINUED INVOLVEMENT IN THIS
PROCESS***

STAKEHOLDER ENGAGEMENT

Elna de Beer
SRK Consulting
P O Box 55291
Northlands
2116

Tel: +27(0)11 441 1111 Fax: +27(0)86 5061737

Email: edebeer@srk.co.za

Appendix E: Proceedings in CRR format

LONMIN PROPOSED TD8 AND TD9 PROJECT
WARD COUNCILLORS FOCUS GROUP MEETING HELD ON 14 MARCH 2013: PROCEEDINGS IN CRR FORMAT

| Nr | Comment/Question | Commentator | Organisation | Date | Source | Response | Category |
|----|--|----------------|---|---------------|---|---|--|
| 1 | Which specialist studies will be undertaken during this EIA? | Mpho Magase | Madibeng Local Municipality (Environmental specialist: EIA's and Non- compliance) | 14 March 2013 | Focus group meeting – Ward Councillors and Municipalities | Regulation 73 of the MPRDA Regulations specifically determines the areas of specialist studies to be undertaken. In addition, the following specialist studies are also under way: <ul style="list-style-type: none"> • Air quality study • Biodiversity study • Heritage study • Ground water study • Surface water study | EIA process |
| 2 | Where exactly will the proposed tailings dams be located? | Petrus Makgabo | Madibeng Local Municipality – Ward Councillor – Ward 31 | 14 March 2013 | Focus group meeting – Ward Councillors and Municipalities | The proposed dam will be located on the farm Middelkraal 466JQ, which Lonmin has surface and mineral rights to. The tailings dams will be located directly south of existing Tailings Dam 6 on Lonmin Western Platinum (WPL). Lonmin will organize a site visit for the ward councillors and officials. | Project specific issue – Location of project |
| 3 | What happens to the return-water? | Petrus Makgabo | Madibeng Local Municipality – Ward Councillor – Ward 31 | 14 March 2013 | Focus group meeting – Ward Councillors and Municipalities | The return water is pumped to the concentrator for re-use in transporting tailings to the tailings facility. | Project specific issue – Return-water |
| 4 | What are the alternative site options for the proposed tailings dams? How was this process undertaken? | Mpho Magase | Madibeng Local Municipality (Environmental specialist: EIA's and Non- compliance) | 14 March 2013 | Focus group meeting – Ward Councillors and Municipalities | The site selection process and options are outlined in Section 2 of the Draft Scoping Report. | Project specific issue – Site selection |
| 5 | What is the gradient of the slope of tailings dam and how is it determined? | Mpho Magase | Madibeng Local Municipality (Environmental specialist: EIA's and Non- compliance) | 14 March 2013 | Focus group meeting – Ward Councillors and Municipalities | For TD 8 and TD 9 the slope will be 1:3. This slope is based on the characteristics of the Lonmin tailings. It will promote rehabilitation and ensure safety of the walls of the dam.. | Project specific issue – Tailings dam |

**LONMIN PROPOSED TD8 AND TD9 PROJECT
WARD COUNCILLORS FOCUS GROUP MEETING HELD ON 14 MARCH 2013: PROCEEDINGS IN CRR FORMAT**

| Nr | Comment/Question | Commentator | Organisation | Date | Source | Response | Category |
|----|---|----------------|---|---------------|---|---|--|
| 6 | What is the height of the tailings dam and how is it determined? | Mpho Magase | Madibeng Local Municipality (Environmental specialist: EIA's and Non- compliance) | 14 March 2013 | Focus group meeting – Ward Councillors and Municipalities | The proposed height is 65m. The height is determined by specialist engineers to ensure the dam does not collapse/fail. | Project specific issue – Tailings dam |
| 7 | What restrictions are relevant at tailings dams? | Mpho Magase | Madibeng Local Municipality (Environmental specialist: EIA's and Non- compliance) | 14 March 2013 | Focus group meeting – Ward Councillors and Municipalities | Access to TDs must be controlled and no person without a permit from the mine may have access since the tailings dams could pose a safety risk to that individual. | Project specific issue – Tailings dam |
| 8 | Can the tailings not be used in the local communities to for example make bricks or for agriculture? | Petrus Makgabo | Madibeng Local Municipality – Ward Councillor – Ward 31 | 14 March 2013 | Focus group meeting – Ward Councillors and Municipalities | The tailings must also meet certain requirements to be used for bricks to ensure the bricks are strong enough for building purposes. This has never been tested and could possibly be explored as a future project. etc. | Project specific issue – Use of tailings |
| 9 | Please explain how during the rehabilitation process, grass can grow on the barren tailings taking the difference between soil and tailings into account. | Petrus Makgabo | Madibeng Local Municipality – Ward Councillor – Ward 31 | 14 March 2013 | Focus group meeting – Ward Councillors and Municipalities | The grass does not grow naturally on tailings material. Growth enhancers such as compost and mulch are added to the tailings to create a growth medium for grasses. . | Rehabilitation |
| 10 | When construction of the tailings dams start in July 2014, how will local communities benefit in the process? | Petrus Makgabo | Madibeng Local Municipality – Ward Councillor – Ward 31 | 14 March 2013 | Focus group meeting – Ward Councillors and Municipalities | The proposed project is a sustainability project, to maintain operation. There will be no additional long term job opportunities and contractor staff will be involved in the construction. Legislation requires that qualified persons be employed to construct and sign-off on the construction of the tailings dam Lonmin will keep ward councillors informed regarding future informal job opportunities. | Socio-economic |



Environmental Authorisations and Environmental Management Programme Amendment for the proposed new Tailings Storage facilities and associated infrastructure at Western Platinum Mine (WPL) and Eastern Platinum Mine (EPL), North West

DEDECT Number: NWP/EIA/08/2012
DMR Ref No for WPL: ML8/95 and DMR Ref No for EPL: ML 3/96

Proceedings for the Focus Group Meeting held with Bapo Ba Mogale Traditional Authority-Segwaelane Sub-Council

Held at the Segwaelane Community Hall, on Friday, 15 March 2013

1 Opening and Welcome

Victor Tseka (Lonmin) opened the meeting and welcomed everybody present. The draft Agenda was distributed – See **Appendix A**.

2 Health and Safety moment

Victor Tseka explained the importance of safety and in particular safety during the upcoming Easter weekend when people are driving far.

3 Introductions and attendance

Victor Tseka requested attendees to introduce themselves.

See attendance list attached as **Appendix B**.

4 Purpose of the meeting

Victor Tseka and Elna de Beer (SRK Consulting) explained the purpose of the meeting as follows:

Lonmin operates both Western Platinum Limited (WPL) and Eastern Platinum Limited (EPL). As a result of limited storage capacity, new tailings storage facilities and associated infrastructure are required. This includes the construction of:

- Tailings Dam (TD) 8 and TD9 on WPL
- Construction of new and the upgrading of existing pipelines for the transport of tailings from existing concentrators to the new Tailings Dams
- Pump stations, and
- A return water dam

Before Lonmin can commence with the project an environmental authorisation process must be undertaken and have appointed SRK Consulting as the Environmental Assessment Practitioner to undertake the Environmental Impact Assessment and the associated stakeholder engagement process. The project will be announced shortly and Lonmin would like to consult with key stakeholders as part of the process.

A meeting was held with the Bapa Ba Mogale Traditional Authority Administrator, Mr I.S. Monamode on 11 March 2013 and the project was explained to him. It was agreed that SRK Consulting and Lonmin would meet with the Segwaelane and Wonderkop Sub-Councils to introduce the proposed Lonmin project.

The purpose of this meeting is to discuss the project and provide members of the Sub-Council with background information related to the project and to introduce the SRK Consulting and Lonmin project team. Information regarding the environmental authorisation processes being followed and how the Sub-Council can contribute to the process will also be provided.

Information packs in three languages were distributed at the meeting

The information contained the following documents:

| Documents distributed | English | Setswana | Xhosa |
|--|---------|----------|-------|
| Background Information Document (BID) | 10 | 10 | 10 |
| Announcement Letter | 10 | 10 | 10 |
| Interested and Affected Party Registration sheet | 10 | 10 | 10 |

5 Presentation and discussion: Lonmin new TSF and associated infrastructure

Ali Mogale (Lonmin) presented the Lonmin proposed project. See presentation attached as **Appendix C**.

Matters discussed have been documented in Comment and Response Report format. See attached as **Appendix E**

6 Presentation and discussion: Environmental authorisation and stakeholder engagement process

Elna de Beer (SRK Consulting) presented the environmental authorisation and stakeholder engagement process. See presentation attached as **Appendix D**

Matters discussed have been documented in Comment and Response Report format. See attached as **Appendix E**

7 General

No general matters were discussed

Meeting was closed at 13h00.

Written by:

SRK Consulting - Certified Electronic Signature

 *E. De Beer*
 436739/41367/Minutes
 9495-9921-1453-DEEL
 This signature has been printed digitally. The user has been granted permission for its use for this document. The details are stored in the SRK Signature Database.

E De Beer, Senior Stakeholder Engagement Specialist

APPENDICES

Appendix A: Agenda

Appendix B: Attendance List

Appendix C: Lonmin presentation

Appendix D: SRK Consulting presentation

Appendix E: Proceedings in CRR format

Appendix A: Agenda

**ENVIRONMENTAL AUTHORISATIONS AND ENVIRONMENTAL MANAGEMENT PROGRAMME AMENDMENT
FOR PROPOSED NEW TAILINGS DAMS AND ASSOCIATED INFRASTRUCTURE AT WESTERN PLATINUM MINE
AND EASTERN PLATINUM MINE, NORTH WEST PROVINCE**

DEDECT Number: NWP/EIA/08/2012

DMR Ref No for WPL: ML 8/95 & DMR Ref No for EPL: ML 3/96

Announcement meetings with key stakeholders

March 2013

Draft AGENDA

Facilitator: Victor Tseka, Lonmin and Elna de Beer, SRK Consulting

- 1. Opening and Welcome**
- 2. Health and safety moment**
- 3. Introductions**
- 4. Purpose of the meeting**
- 5. Presentation and discussion: Lonmin new tailings dams and associated infrastructure project**
- 6. Presentation and discussion: Environmental authorisation and stakeholder engagement process**
- 7. General**
- 8. Closure**

Appendix B: Attendance lists

LONMIN PROJECT

ATTENDANCE REGISTER

Meeting : SEGWHELANE TA

Date : 15 March 2013




Venue : ^{1st} SEGWHELANE Community Hall

| TITLE | FIRST NAME | SURNAME | ORGANISATION (Please do not use acronyms) | POSTAL ADDRESS | CONTACT DETAILS |
|-------|------------|---------|---|------------------------------------|---|
| Mrs | Mandy | Jibless | Lonmin | Private Bag X508 Mankwa 0285 | Tel No: 014 571 2557 Fax No: NA Cell No: 071 8825 788 E-mail: Mandy.Jibless@Lonmin.co.za Signature: Mandy |
| Mr. | Victor | Tseka | Lonmin | Same as above | Tel No: 014 571 4242 Fax No: 014 571 2037 Cell No: 083 294 0431 E-mail: Victor.Tseka@Lonmin.com Signature: Mpho |
| Mr. | Ali | Mooxo | Lonmin | PRIVATE BAG X508 Mankwa 0285 | Tel No: 014 571 4867 Fax No: 0866 343 990 Cell No: 073 621 3493 E-mail: ALI-MOOXO@Lonmin.co.za |

①

| TITLE | FIRST NAME | SURNAME | ORGANISATION (Please do not use acronyms) | POSTAL ADDRESS | CONTACT DETAILS |
|-------|------------|----------|---|----------------|---|
| | | | | | Signature: |
| | Alua | de Beer | SRK | / | Tel No: 011 441 1111 |
| | | | | | Fax No: |
| | | | | | Cell No: 082 490 6596 |
| | | | | | E-mail: eadebe@srk.co.za |
| | | | | | Signature: |
| | | | | | Tel No: (012) 261-1500 |
| | | | | | Fax No: (012) 261-1503 |
| | | | | | Cell No: 076 700 4501 |
| | Mottana | Uphoreny | Bapo Traditional Council | | E-mail: mottana.uphoreny@bapobanorape.co.za |
| | | | | | Signature: U.U. |
| | | | | | Tel No: |
| | | | | | Fax No: |
| | | | | | Cell No: |
| | | | | | E-mail: |
| | | | | | Signature: |
| | | | | | Tel No: |
| | | | | | Fax No: |
| | | | | | Cell No: |
| | | | | | E-mail: |
| | | | | | Signature: |
| | | | | | Tel No: |
| | | | | | Fax No: |
| | | | | | Cell No: |
| | | | | | E-mail: |
| | | | | | Signature: A. Masiragc |

(2)

| TITLE | FIRST NAME | SURNAME | ORGANISATION (Please do not use acronyms) | POSTAL ADDRESS | CONTACT DETAILS |
|-------|------------|-----------|---|--------------------------------|--|
| MR | Laegans | Sebatsebe |  | | Tel No: Fax No: Cell No: E-mail: 0710845074 Signature: |
| MR | MICHAEL | MOKATE | SEGWATLANE Sub-Council | P.O. Box 3838 BRITS 0250 | Tel No: Fax No: Cell No: 0833518987 E-mail: Signature:  |
| Mr | Frank | James | Segwaelane | P.O Box 708 Senop | Tel No: Fax No: Cell No: 0834260454 E-mail: Signature: |
| Mr | Obedi | Mokomele | Segwaelane | Box 92031 Newwood 2117 | Tel No: 011 4911-4075 Fax No: Cell No: 0721941922 E-mail: Signature:  |

(3)

| TITLE | | FIRST NAME | SURNAME | ORGANISATION (Please do not use acronyms) | POSTAL ADDRESS | CONTACT DETAILS | | | | | | | | | |
|-------|--|------------|---------|---|---------------------|-----------------|------------|---------|--|----------|--|---------|--|------------|--|
| | | Margaret | Moate | | Box 95 Segeleane | Tel No: | 0767434585 | Fax No: | | Cell No: | | E-mail: | | Signature: | |
| | | | | | | Tel No: | | Fax No: | | Cell No: | | E-mail: | | Signature: | |
| | | | | | | Tel No: | | Fax No: | | Cell No: | | E-mail: | | Signature: | |
| | | | | | | Tel No: | | Fax No: | | Cell No: | | E-mail: | | Signature: | |

3

Appendix C: Lonmin presentation



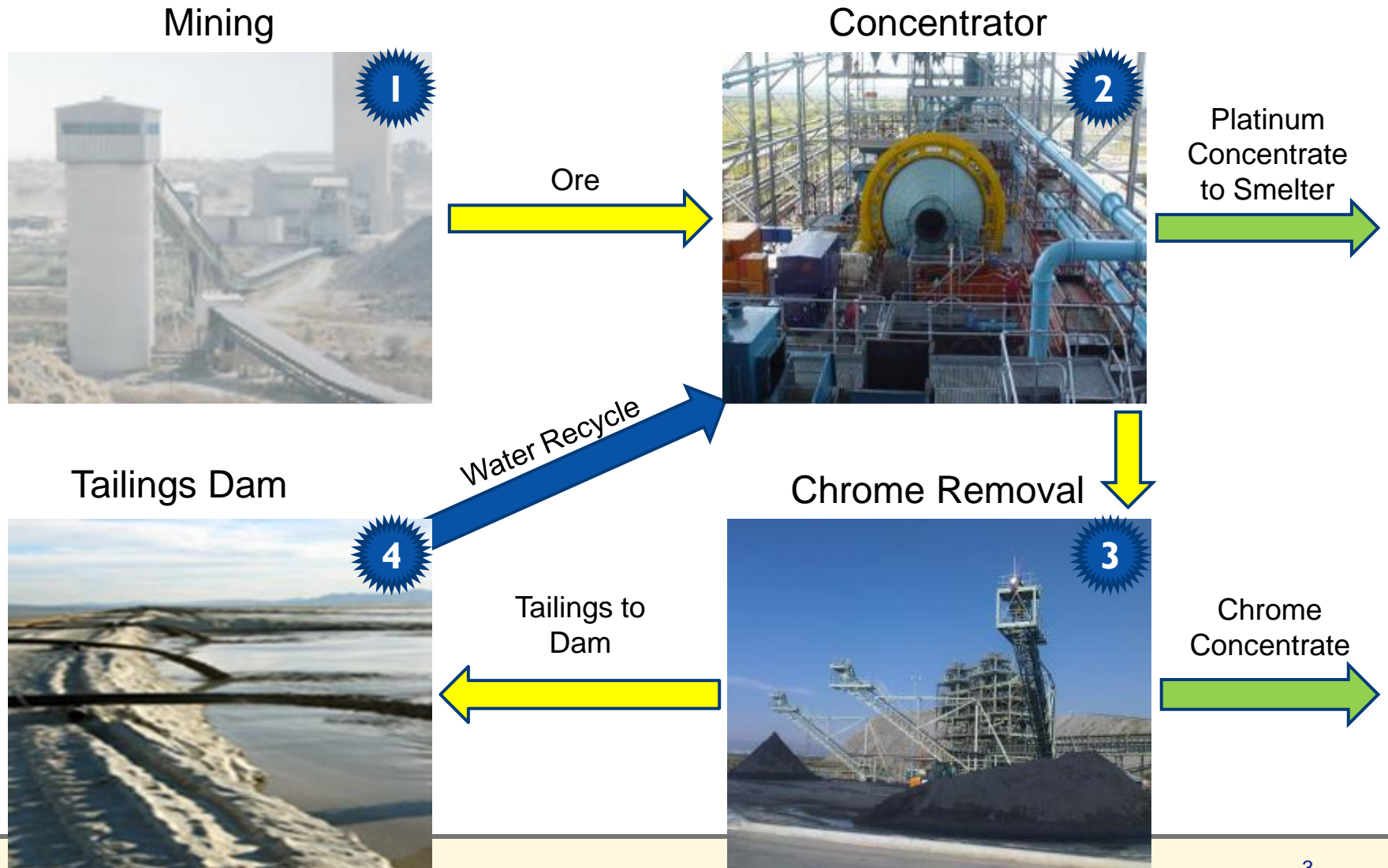
Tailings Dams – An Introduction

14th of March 2013

Context

- **Platinum production generates waste in the form of tailings**
- **Tailings are deposited on structures known as tailings dams**
- **Some of Lonmin's existing tailings dams are approaching the end of their storage capacity and need replacement soon (next 3-5 years)**
- **New tailings dams need to be constructed to ensure storage capacity for Lonmin's tailings for Life of Mine (50 years +)**
- **Without these tailings facilities, platinum production will not be possible.**

Basic PGM Flow Sheet

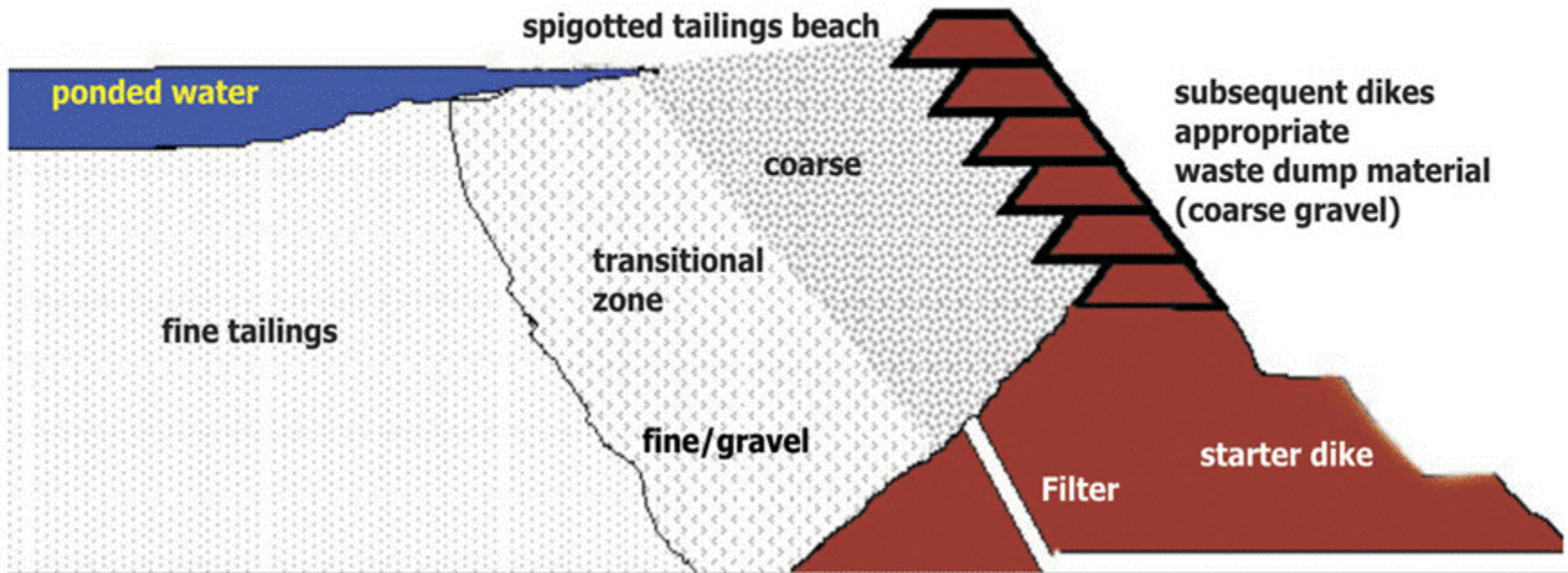


Existing Tailings Dam 5 - Nearing End of Life



Construction of a Tailings Dam

Upstream construction of a tailings dam



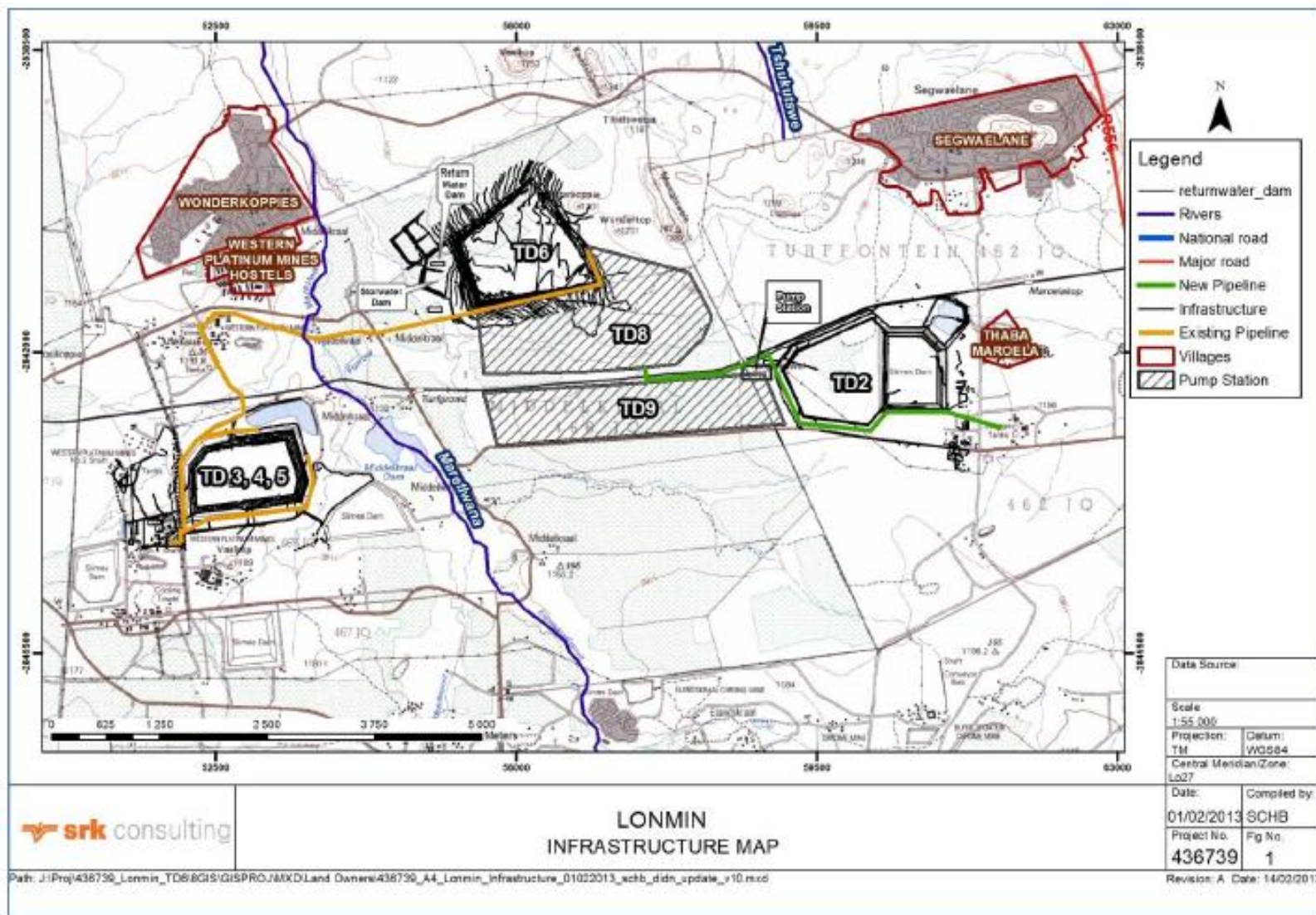
Tailings Dam 6 - Example of a New Dam



Water collection from dam



Proposed Tailings Dams and Infrastructure



Project Milestones

- **Construction of the Dam to commence July 2014**
- **First production / deposition by December 2015**
- **Deposition to continue for Life of Mine (50 years +)**

Management Team



Simon Scott
Acting Chief Executive

Simon joined Lonmin and the Board in September 2010, became CFO in November 2010 and was appointed as Acting CEO on 24 August 2012 in view of Mr Farmer's illness. He is a graduate with accounting and commerce degrees from the University of the Witwatersrand, and has also attended the management development program at the University of Cape Town. A South African registered chartered accountant, he has held a number of financial management roles in South Africa with local and global employers including over eight years with Anglo American. Most recently he was CFO of the JSE-listed Aveng Limited, a globally active engineering and construction group with significant involvement in the mining sector.



Albert Jamieson
Chief Commercial Officer

Albert joined Lonmin in 1989 after 8 years at Impala Platinum, where he was responsible for their concentrator operations. At Lonmin, he has held a number of senior management and executive positions in the mine production and commercial areas of the business including responsibility for investments in Africa, South America, North America, Australia and Japan. The commercial portfolio currently comprises business development, strategy, marketing and sales, exploration, legal and life of business planning. Albert has a BSc in Minerals Engineering from the University of Birmingham and an MBA from the University of Cape Town.



Barnard Mokwena
EVP, Human Capital & External Affairs

Barnard joined Lonmin in October 2005 as a Group Manager and was subsequently promoted to his current position. He previously worked in senior management positions in a range of sectors for a number of companies including Sentech, the South African Rail Commuter Corporation and the National Lottery Operator (UTHINGO). He holds a BA Phil from Urban Pontifical University, an MA Licentiate from Gregorian University and an EDP from Pretoria.



Mark Munroe
EVP, Mining

Mark joined Lonmin in March 2008 in the Mining business, becoming VP Capital Projects & Engineering before being appointed as EVP Mining in June 2009. Mark joined Lonmin from DRDGold, where he spent six years, holding a number of senior management positions including General Manager of DRDGold and CEO of DRDCapital. Prior to that, he worked for AngloGold for 12 years. He is a mining engineer and also has a degree in economics.



Thandeka Ncube
Business Transformation Manager, Shanduka Resources

Thandeka works with Shanduka's investee companies advising on transformation and broad based empowerment. She holds a Social Sciences degree from the City University of New York and an MBA from Henley Business School. She began her career working with various government institutions, developing strategy and policy for small and medium enterprises, then joined the retail banking side of Standard Bank, where she again focussed on the needs of SMEs.



Natascha Viljoen
EVP, Process Division

Natascha joined Lonmin in 2008 from BHP Billiton, where she was General Manager for Klipspruit mine. Her initial responsibility was for managing Lonmin's concentrators, and in May 2011 she was promoted to her current role, covering all concentrating, smelting and refining operations. She holds an engineering degree and is currently busy with an executive MBA with University of Cape Town. Her career stretches over various commodities and disciplines in the mining industry with 9 years in senior management roles. Before BHP Billiton she held positions with Anglo American Platinum and AngloGold.

Disclaimer

This presentation, which is personal to the recipient, has been issued by Lonmin. This presentation includes forward-looking statements. All statements other than statements of historical fact included in this announcement, including without limitation those regarding Lonmin's plans, objectives and expected performance, are forward-looking statements. Lonmin has based these forward-looking statements on its current expectations and projections about future events, including numerous assumptions regarding its present and future business strategies, operations, and the environment in which it will operate in the future. Forward-looking statements generally can be identified by the use of forward-looking terminology such as 'ambition', 'may', 'will', 'could', 'would', 'expect', 'intend', 'estimate', 'anticipate', 'believe', 'plan', 'seek' or 'continue', or negative forms or variations of similar terminology. Such forward-looking statements involve known and unknown risks, uncertainties, assumptions and other factors related to Lonmin, including, among other factors: (1) material adverse changes in economic conditions generally or in relevant markets or industries in particular; (2) fluctuations in demand and pricing in the mineral resource industry and fluctuations in exchange rates; (3) future regulatory and legislative actions and conditions affecting Lonmin's operating areas; (4) obtaining and retaining skilled workers and key executives; and (5) acts of war and terrorism. By their nature, forward-looking statements involve risks, uncertainties and assumptions and many relate to factors which are beyond Lonmin's control, such as future market conditions and the behaviour of other market participants. Actual results may differ materially from those expressed in forward-looking statements. Given these risks, uncertainties, and assumptions, you are cautioned not to put undue reliance on any forward-looking statements. In addition, the inclusion of such forward-looking statements should under no circumstances be regarded as a representation by Lonmin that Lonmin will achieve any results set out in such statements or that the underlying assumptions used will in fact be the case. Other than as required by applicable law or the applicable rules of any exchange on which Lonmin's securities may be listed, Lonmin has no intention or obligation to update or revise any forward-looking statements included in this presentation after the publication of this presentation. This presentation is for information only and does not constitute or form part of any offer or invitation to sell, or any solicitation of any offer to purchase, any shares in Lonmin or any other securities, nor shall it or any part of it nor the fact of its distribution form the basis of, or be relied upon in connection with, any contract or investment decision related thereto. Information supplied by host presenters may not be used, referenced or published without the prior written consent of the author of the presentations.

Appendix D: SRK Consulting presentation

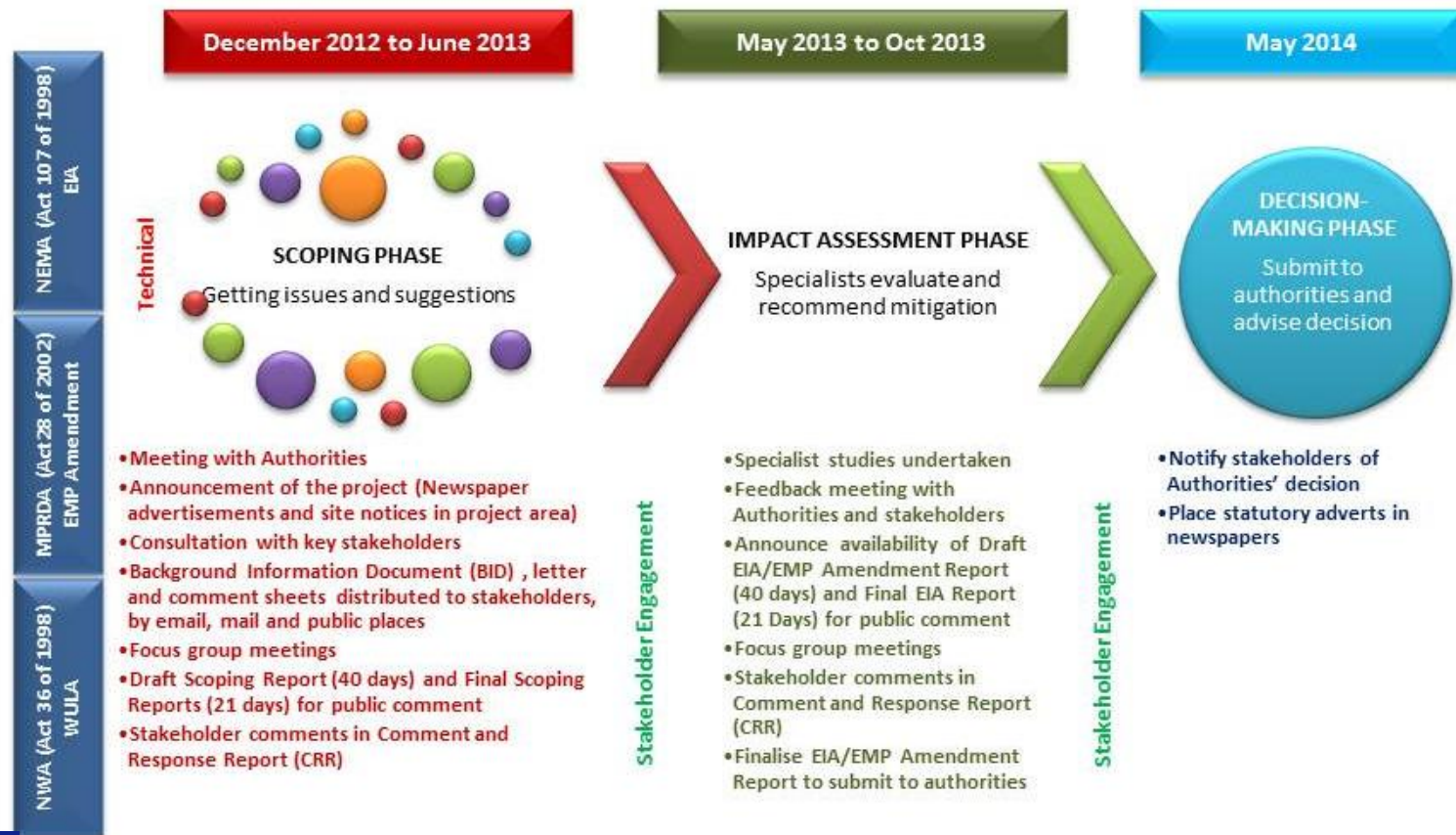
**ENVIRONMENTAL AUTHORISATIONS FOR THE PROPOSED NEW TAILINGS
STORAGE FACILITIES (TD8 AND TD9) AND ASSOCIATED
INFRASTRUCTURE AT LONMIN'S WESTERN PLATINUM MINE AND
EASTERN PLATINUM MINE, NORTH WEST PROVINCE**

**STAKEHOLDER ENGAGEMENT
Announcement**



The authorisation process

ENVIRONMENTAL AUTHORISATION AND ASSOCIATED STAKEHOLDER ENGAGEMENT PROCESS



Our roles

- **Lonmin: Applicant that has requested permitting (EIA, EMP Amendment and WULA amendment) to undertake the proposed project from DMR, DEDECT and DWA**
- **SRK Consulting: appointed in terms of the law as independent Environmental Assessment Practitioner to assess the potential impacts of the proposed project**

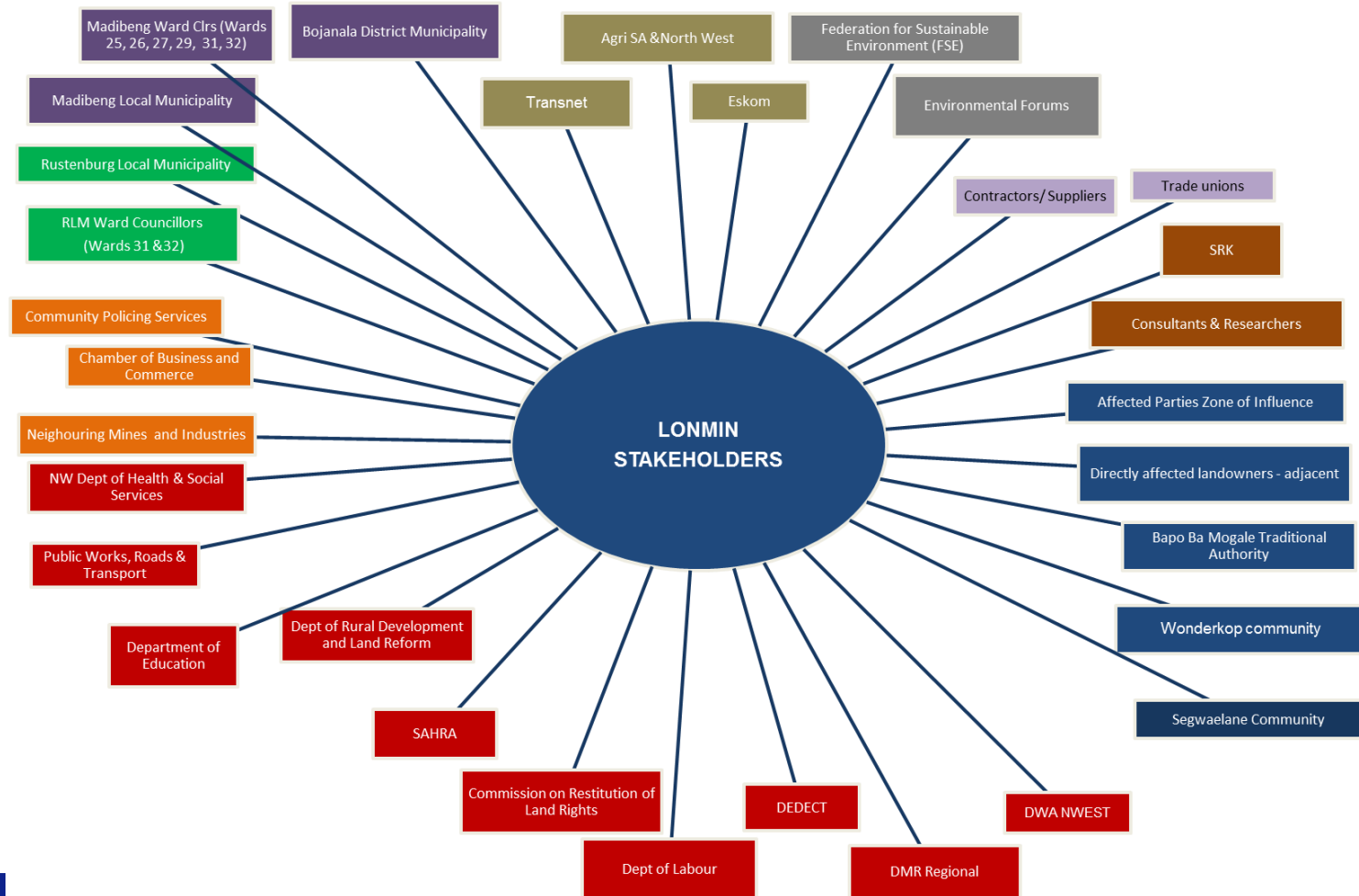
Government's roles

- **DMR, DEDECT & DWA: Decision-making authorities in the permitting process**
- **District and Local Municipalities: Commenting authorities in terms of the law and will be required to formally comment on the proposed project during various stages of the process**

Role of ward councillors and municipalities

- Represent people and government
- Right to know what is happening in and around constituencies
- Share information in wards
- Participate in legal process as it unfolds
- Keep constituency informed

Who are the stakeholders?



Who are the Municipalities involved?

Bojanala District Municipality

Madibeng Local Municipality (Wards 7, 25, 26, 27, 28, 29, 31 and 32)

Rustenburg Local Municipality (Wards 31 and 32)

Which Traditional Authority is involved?

Bapo Ba Mogale Traditional Authority

Segwaelane

Bapong

Wonderkop

Why are we here today?

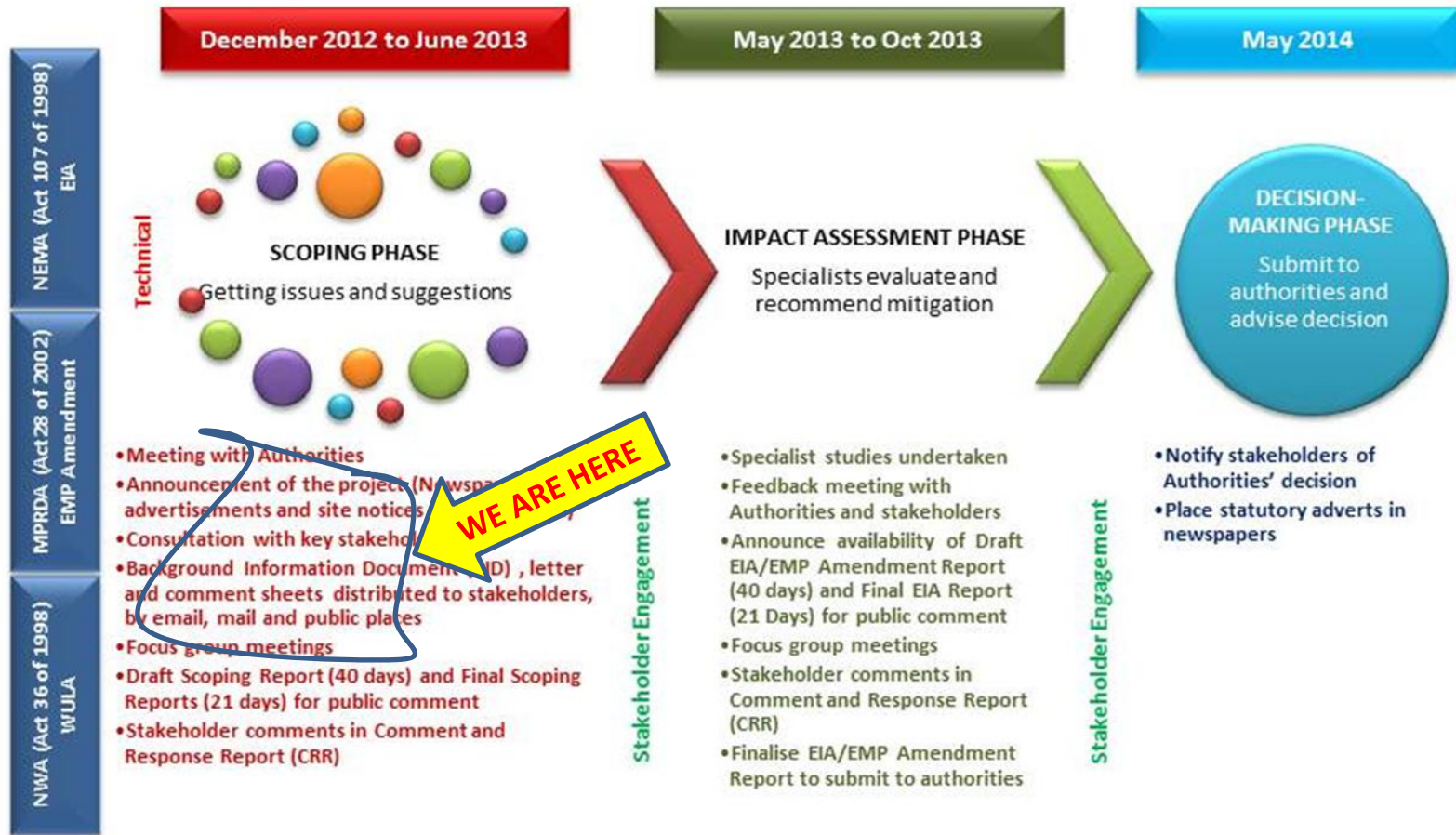
- Inform ward councillors of the announcement of the proposed project
- Share background information of the project and to get input of ward councillors
- Involve the ward councillors from the beginning of the process
- Establish a platform where SRK Consulting can provide information and opportunity for ward councillors and municipalities to participate in the process throughout the EIA

What is happening now?

Announcing the proposed project as legally required with:

- **Advertisements in Rustenburg Herald & Britspos**
- **Site notices (Setswana, Xhosa, English & Afrikaans)**
- **Public Places where information is accessible**
- **Information packs to ward councillors and stakeholders**
- **Letters/emails to stakeholders announcing the proposed project**
- **Meetings with Bapo Ba Mogale, Ward Councillors**

ENVIRONMENTAL AUTHORISATION AND ASSOCIATED STAKEHOLDER ENGAGEMENT PROCESS



What will happen next?

- All comments received into a Comment and Response Report as legally required
- All meetings documented as legally required
- Draft Scoping Report (DSR) available to public for 40 days to comment on – all will be notified
- Meetings to discuss DSR
- Final Scoping Report (FSR) – 21 days
- Submit FSR to authorities
- When FSR is accepted by authorities, next phase (impact assessment) will begin and stakeholders will be notified

***THANK YOU FOR YOUR ATTENDANCE
WE LOOK FORWARD TO YOUR
CONTINUED INVOLVEMENT IN THIS
PROCESS***

STAKEHOLDER ENGAGEMENT

**Elna de Beer
SRK Consulting
P O Box 55291
Northlands
2116**

Tel:+27(0)11 441 1111 Fax: +27(0)86 5061737

Email: edebeer@srk.co.za

Appendix E: Proceedings in CRR format

LONMIN PROPOSED TD8 AND TD9 PROJECT
SEGWAELANE SUB-COUNCIL FOCUS GROUP MEETING HELD ON 15 MARCH 2013; PROCEEDINGS IN CRR FORMAT

| Nr | Comment/Question | Commentator | Organisation | Date | Source | Response | Category |
|----|--|------------------|--|---------------|---|---|-----------------------------|
| 1 | What is SRK Consulting's role in the process? | Motlana Mphoreng | Bapo Ba Mogale - Project Manager | 15 March 2013 | Focus group meeting with Segwaelane Sub Council | SRK Consulting has been appointed by Lonmin as the independent Environmental Assessment Practitioner to undertake the Environmental Impact Assessment and the Stakeholder Engagement Process. This is a legal requirement. SRK Consulting will assess potential impacts of the proposed project and present findings to the decision-making authorities. Stakeholder engagement will take place throughout the EIA process. | EIA process |
| 2 | How do we (Segwaelane) deal with contractors leaving areas unrehabilitated and unsafe, e.g. leaving holes in the ground after drilling | Abram Maginge | Bapo Ba Mogale TA – Segwaelane Sub Council | 15 March 2013 | Focus group meeting with Segwaelane Sub Council | All contractors working for Lonmin must comply with all applicable legislative requirements. Lonmin must comply with the conditions of the approved Environmental Management Plan Programme (EMP) for Prospecting received from the DMR. In addition to this an Environmental Standard for Drilling has been developed by Lonmin. Together with related procedures rehabilitation and closure of the site is strictly controlled. An assessment is made by before site establishment by the contractor, with photographic records. After drilling has been completed, a closure assessment is done by Lonmin Geology Projects and the environmental division and records kept for this purpose. Prospecting Performance Assessments are sent to the DMR as part of the legal conditions of the EMP, and these documents with this documenting the rehabilitation undertaken at these sites. | Health, safety and security |
| 3 | What does having a mining right on land mean? | Motlana Mphoreng | Bapo Ba Mogale - Project Manager | 15 March 2013 | Focus group meeting with Segwaelane Sub Council | In terms of South African Law, surface rights and mining rights held within such surface right are separated. Within this context, Surface rights means: the owner of the land still owns the surface of the land. Such an owner may undertake activities on the land in line with its zoning, such as farming or commerce. The surface rights owner however does not own any minerals that may be found on the land. | Mining right |

LONMIN PROPOSED TD8 AND TD9 PROJECT
SEGWAELANE SUB-COUNCIL FOCUS GROUP MEETING HELD ON 15 MARCH 2013; PROCEEDINGS IN CRR FORMAT

| Nr | Comment/Question | Commentator | Organisation | Date | Source | Response | Category |
|----|--|------------------|--|---------------|---|---|--|
| | | | | | | <p>Mining rights means: The holder of a mining right may extract the minerals on or underneath the surface of the land in question. The nature of a mining right is similar to providing the holder of the mining right with a "servitude" to access the property and to mine the minerals. The holder of the mining right must obtain agreement with the owner of the surface rights to enter his/her land to mine. In terms of latest legislation, the holder of the mining right must also ensure rezoning of land where surface infrastructure is to be established.</p> | |
| 4 | The community must keep the proposed project area open and guard against people moving into the area. It could compromise the project. | Motlana Mphoreng | Bapo Ba Mogale - Project Manager | 15 March 2013 | Focus group meeting with Segwaelane Sub Council | Lonmin cannot prevent or manage people settling informally around the mine if Lonmin is not the owner of the surface rights to the land. Lonmin can only prevent informal settlement on land for which it owns the surface rights. It should be realised that Lonmin was granted mining rights by Government and have that right to exercise our mining activities. People settling informally on a mining right area must also realise that it is done illegally, exposing themselves to safety risks. In their safety interest and protecting lives, Lonmin will therefore ensure that there is no informal occupation of its mining rights area. | Project area integrity |
| 5 | When will the construction of the tailings dams start? | Michael Mokate | Bapo Ba Mogale TA – Segwaelane Sub Council | 15 March 2013 | Focus group meeting with Segwaelane Sub Council | Although construction is proposed for May-July 2014 the environmental authorisation process still has to be undertaken and once Lonmin is granted the relevant environmental authorisations, construction may commence. | Project specific issue – Construction phase |
| 6 | Where are the new tailings dams in relation to the railway line and Segwaelane community? | Obbed Mokomele | Bapo Ba Mogale TA – Segwaelane Sub Council | 15 March 2013 | Focus group meeting with Segwaelane Sub Council | The railway is in between tailings dam 8 and tailings dam 9. Tailings dam 8 is directly south of tailings dam 6 on Lonmin Western Platinum Mine. The Segwaelane community is located to the North East of the proposed project. | Project specific issue – Location of project |

LONMIN PROPOSED TD8 AND TD9 PROJECT
SEGWAELANE SUB-COUNCIL FOCUS GROUP MEETING HELD ON 15 MARCH 2013; PROCEEDINGS IN CRR FORMAT

| Nr | Comment/Question | Commentator | Organisation | Date | Source | Response | Category |
|----|--|----------------|--|---------------|---|--|------------------------|
| 7 | What will the communities benefit from the proposed project? | Michael Mokate | Bapo Ba Mogale TA – Segwaelane Sub Council | 15 March 2013 | Focus group meeting with Segwaelane Sub Council | The proposed project is a sustainability project, to maintain our mining operations in accordance with Lonmin's long term business plan thus ensuring long term operation of the mine and on-going employment of the current workforce. | Socio-economic |
| 8 | What will happen if the community does not want this project from Lonmin? What will the process be? | Michael Mokate | Bapo Ba Mogale TA – Segwaelane Sub Council | 15 March 2013 | Focus group meeting with Segwaelane Sub Council | This project forms part of Lonmin's long term business plan to further execute our existing mining right. For such developments, stakeholder engagement is an integral part of the EIA process and a right recognised in the SA Constitution. During the EIA there will be various opportunities for stakeholders to register their concerns and issues regarding the proposed project. Stakeholders have the responsibility to ensure that their comments have been reflected and addressed fairly in the process (i.e. the Comment and Response Report and the EIA reports). When a decision is made by the Authorities stakeholders still have the opportunity to appeal against the decision in a process prescribed by the authorities. The reasons for objecting against the project must however be factual and relevant. Ultimately the decision regarding whether the project may proceed or not lies with the authorities. | Stakeholder engagement |
| 9 | The Segwaelane Sub Council proposed land to be earmarked for a future grave yard as well as youth development in the TD 8 area. This was discussed with Lonmin and must be taken into consideration in this project. | Abram Maginge | Bapo Ba Mogale TA – Segwaelane Sub Council | 15 March 2013 | Focus group meeting with Segwaelane Sub Council | Should these developments form part of formal township developments, then the Council will have to follow formal processes in terms of all applicable legislation in establishing these developments. Alternatively, such development projects could be considered in future to form part of Lonmin's Housing and Living Conditions Strategy or the Community Development Programme. However, these projects must be considered on merit and priority by the External Affairs Department for consideration. | Township expansion |

**LONMIN PROPOSED TD8 AND TD9 PROJECT
SEGWAELANE SUB-COUNCIL FOCUS GROUP MEETING HELD ON 15 MARCH 2013; PROCEEDINGS IN CRR FORMAT**

| Nr | Comment/Question | Commentator | Organisation | Date | Source | Response | Category |
|----|--|----------------|--|---------------|---|--|--------------------|
| 10 | We are not sure where the land is that has been earmarked for the grave yard and youth development. How will this project of Lonmin influence our process in Segwaelane. | Obbed Mokomele | Bapo Ba Mogale TA – Segwaelane Sub Council | 15 March 2013 | Focus group meeting with Segwaelane Sub Council | Lonmin is the owner of the surface rights for the development of TD 8 & 9. This project forms part of Lonmin's long term business plan to sustain our operations and execute theour mining right. The proposed graveyard and youth development does not form part of developments within this specific site. | Township expansion |



Environmental Authorisations and Environmental Management Programme Amendment for the proposed new Tailings Storage facilities and associated infrastructure at Western Platinum Mine (WPL) and Eastern Platinum Mine (EPL), North West

**DEDECT Number: NWP/EIA/08/2012
DMR Ref No for WPL: ML8/95 and DMR Ref No for EPL: ML 3/96**

Proceedings for the Focus Group Meeting held with officials of the Bojanala Platinum District Municipality (BPDM)

Held at BPDM Offices in Rustenburg, on 19 March 2013

1 Opening and Welcome

Victor Tseka (Lonmin) opened the meeting and welcomed everybody present. The draft Agenda was distributed – See **Appendix A**.

2 Health and Safety moment

Victor Tseka explained the importance of safety and in particular safety during the upcoming Easter weekend when people are driving far.

3 Introductions and attendance

Victor Tseka requested attendees to introduce themselves.

See attendance list attached as **Appendix B**.

4 Purpose of the meeting

Victor Tseka and Elna de Beer (SRK Consulting) explained the purpose of the meeting as follows:

Lonmin operates both Western Platinum Limited (WPL) and Eastern Platinum Limited (EPL). As a result of limited storage capacity, new tailings storage facilities and associated infrastructure are required. This includes the construction of:

- Tailings Dam (TD) 8 and TD9 on WPL
- Construction of new and the upgrading of existing pipelines for the transport of tailings from existing concentrators to the new Tailings Dams
- Pump stations, and
- A return water dam

Before Lonmin can commence with the project an environmental authorisation process must be undertaken and have appointed SRK Consulting as the Environmental Assessment Practitioner to undertake the Environmental Impact Assessment and the associated stakeholder engagement process. The project will be announced shortly and Lonmin would like to consult with key stakeholders as part of the process.

Contact has been established with Mr P Makgabo, the Cluster Chairperson and Councillor for Ward 31 and he assisted in arranging a meeting with the relevant Ward Councillors for Wards 7, 25, 26, 27 and 28, 31 and 32. SRK Consulting has also confirmed that the Ward Councillors of Rustenburg Local Municipality (Wards 31 and 32 adjacent to the proposed project area) will be attending the meeting after consultation with Mr P Makgabo and project information was distributed to these two ward councillors.

A meeting was held with the Bapa Ba Mogale Traditional Authority Administrator, Mr I.S. Monamode on 11 March 2013 and the project was explained to him. It was agreed that SRK Consulting and Lonmin would meet with the Segwaelane and Wonderkop Sub-Councils to introduce the proposed Lonmin project. The meeting with the Segwaelane Sub-Council took place on Friday, 15 March 2013 and the meeting with Wonderkop Sub-Council will take place on 19 March 2013.

The purpose of this meeting is to discuss the project and provide the ward councillors and Municipalities with background information related to the project and to introduce the SRK Consulting and Lonmin project team. Information regarding the environmental authorisation processes being followed and how the Municipality and ward councillors can contribute to the process will also be provided.

5 Presentation and discussion: Lonmin new TSF and associated infrastructure

Hazel Fiehn presented the Lonmin proposed project. See presentation attached as **Appendix C**.

Matters discussed have been documented in Comment and Response Report format. See attached as **Appendix E**

6 Presentation and discussion: Environmental authorisation and stakeholder engagement process

Elna de Beer (SRK Consulting) presented the environmental authorisation and stakeholder engagement process. See presentation attached as **Appendix D**

Matters discussed have been documented in Comment and Response Report format. See attached as **Appendix E**

7 General

No general matters were discussed

Meeting was closed at 11h00.

Written by:

SRK Consulting - Certified Electronic Signature

 *E. De Beer*
436739/41367/Minutes
6495-9921-1463-DEEL
This signature has been printed digitally. For Authorisation, permission on for its use for this document. The details are stored in the SRK Signature Database.

E De Beer, Senior Stakeholder Engagement Specialist

APPENDICES

Appendix A: Agenda

Appendix B: Attendance List

Appendix C: Lonmin presentation

Appendix D: SRK Consulting presentation

Appendix E: Proceedings in CRR format

Appendix A: Agenda

**ENVIRONMENTAL AUTHORISATIONS AND ENVIRONMENTAL MANAGEMENT PROGRAMME AMENDMENT
FOR PROPOSED NEW TAILINGS DAMS AND ASSOCIATED INFRASTRUCTURE AT WESTERN PLATINUM MINE
AND EASTERN PLATINUM MINE, NORTH WEST PROVINCE**

DEDECT Number: NWP/EIA/08/2012

DMR Ref No for WPL: ML 8/95 & DMR Ref No for EPL: ML 3/96

Announcement meetings with key stakeholders

March 2013

Draft AGENDA

Facilitator: Victor Tseka, Lonmin and Elna de Beer, SRK Consulting

- 1. Opening and Welcome**
- 2. Health and safety moment**
- 3. Introductions**
- 4. Purpose of the meeting**
- 5. Presentation and discussion: Lonmin new tailings dams and associated infrastructure project**
- 6. Presentation and discussion: Environmental authorisation and stakeholder engagement process**
- 7. General**
- 8. Closure**

Appendix B: Attendance lists





LONMIN PROJECT

ATTENDANCE REGISTER

Meeting : BOJANANG DISTRICT MUNICIPALITY
 Date : 19 MARCH 2013
 Venue : BDM - OFFICE - 30 STEEN STR. RUSTENBURG.

| TITLE | FIRST NAME | SURNAME | ORGANISATION (Please do not use acronyms) | POSTAL ADDRESS | CONTACT DETAILS |
|-------|------------|---------|---|----------------------------------|--|
| Mr. | Vicor | Tseka | Lonmin | P/Bap x508 Mankana 0284 | Tel No: 0145714242 Fax No: 0145712037 Cell No: 0832940431 E-mail: Vicor.tseka@lonmin.com Signature: <i>Vicor</i> |
| Mrs. | Hazel | Fiehn | Lonmin | " | Tel No: 014571-2182 Fax No: Cell No: 083259-0507 E-mail: hazel.fiehn@lonmin.com Signature: <i>Hazel</i> |
| Mr. | Collins | Sindani | Bojanala District Cooperatives Forum. | P.O. Box 253 Thabane. 0309 | Tel No: Fax No: 014-5962022. Cell No: 0787262171. E-mail: esindani@thabane.com |

①

| TITLE | FIRST NAME | SURNAME | ORGANISATION (Please do not use acronyms) | POSTAL ADDRESS | CONTACT DETAILS |
|-------|--------------------|----------|---|----------------------------|--|
| | | | | | Signature: |
| MR | SIBUSISO Joshua | Molokwa | Dejele ESTAX Platinum District Plan | 1993 Rustenburg 0299 | Tel No: 014 590 4613 Fax No: 014 590 4620 Cell No: 082 410 8842 E-mail: Fesuramo@bjymala.gov.za Signature:  |
| Mr | Khoabane | Mofokeng | BPM Rural Development & Agriculture | Rustenburg | Tel No: 073 228 2015 Fax No: 014 - 590 4620 Cell No: 014 - 590 4620 E-mail: kchoabane@bjymala.gov.za Signature:  |
| Mr | THABO | MASHOMO | BPDM MINING & ENTERPRISE DEVELOPMENT COORDINATOR | Rustenburg | Tel No: 014 590 4640 Fax No: 014 590 4620 Cell No: 082 535 7373 E-mail: thabom@bjymala.gov.za Signature:  |
| | | | | | Tel No: 011-4411111 Fax No: Cell No: 082 4906596 E-mail: edebeere@srk.co.za Signature:  |
| | | | | | |

(2)

Appendix C: Lonmin presentation



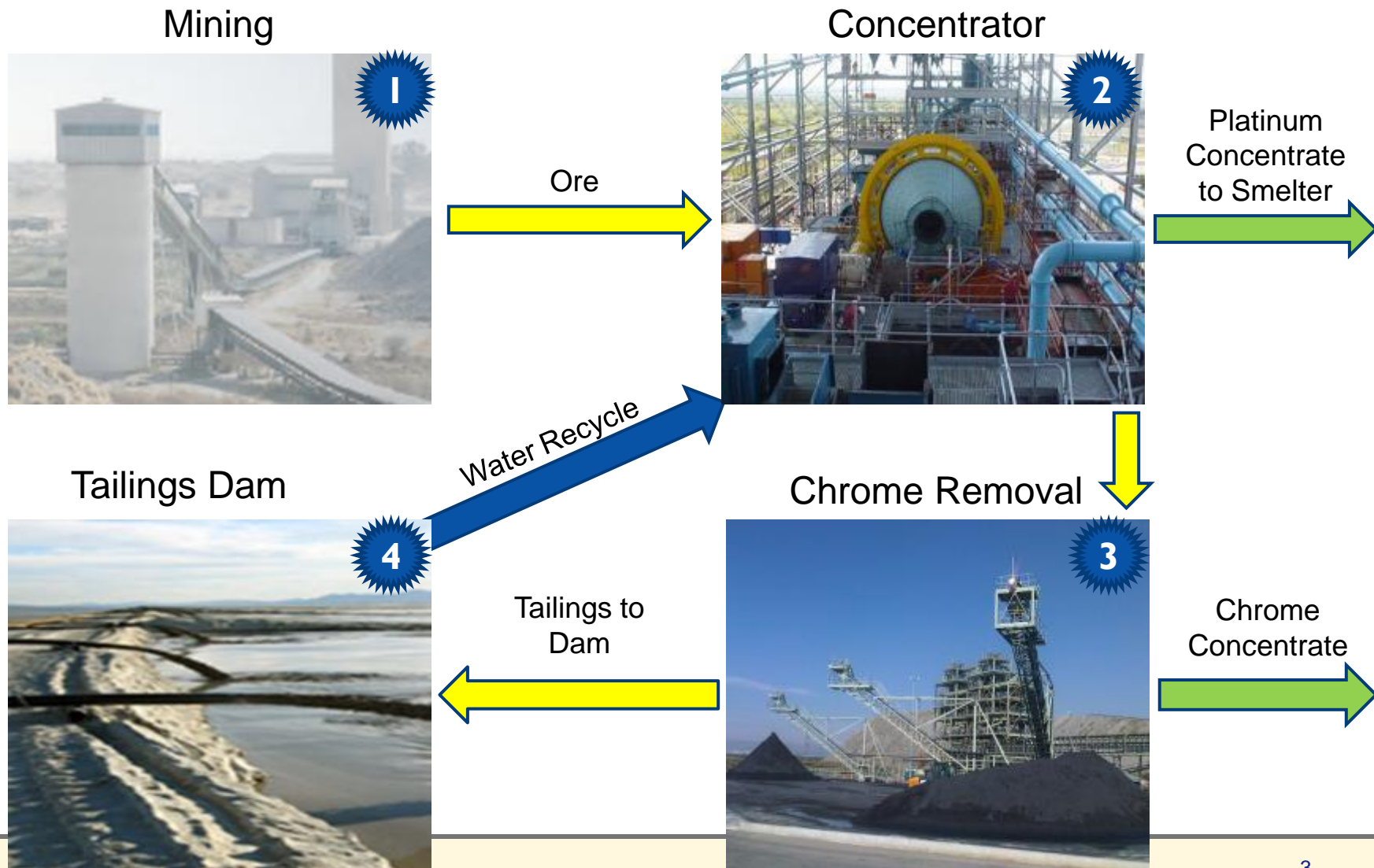
Tailings Dams – An Introduction

14th of March 2013

Context

- **Platinum production generates waste in the form of tailings**
- **Tailings are deposited on structures known as tailings dams**
- **Some of Lonmin's existing tailings dams are approaching the end of their storage capacity and need replacement soon (next 3-5 years)**
- **New tailings dams need to be constructed to ensure storage capacity for Lonmin's tailings for Life of Mine (50 years +)**
- **Without these tailings facilities, platinum production will not be possible.**

Basic PGM Flow Sheet

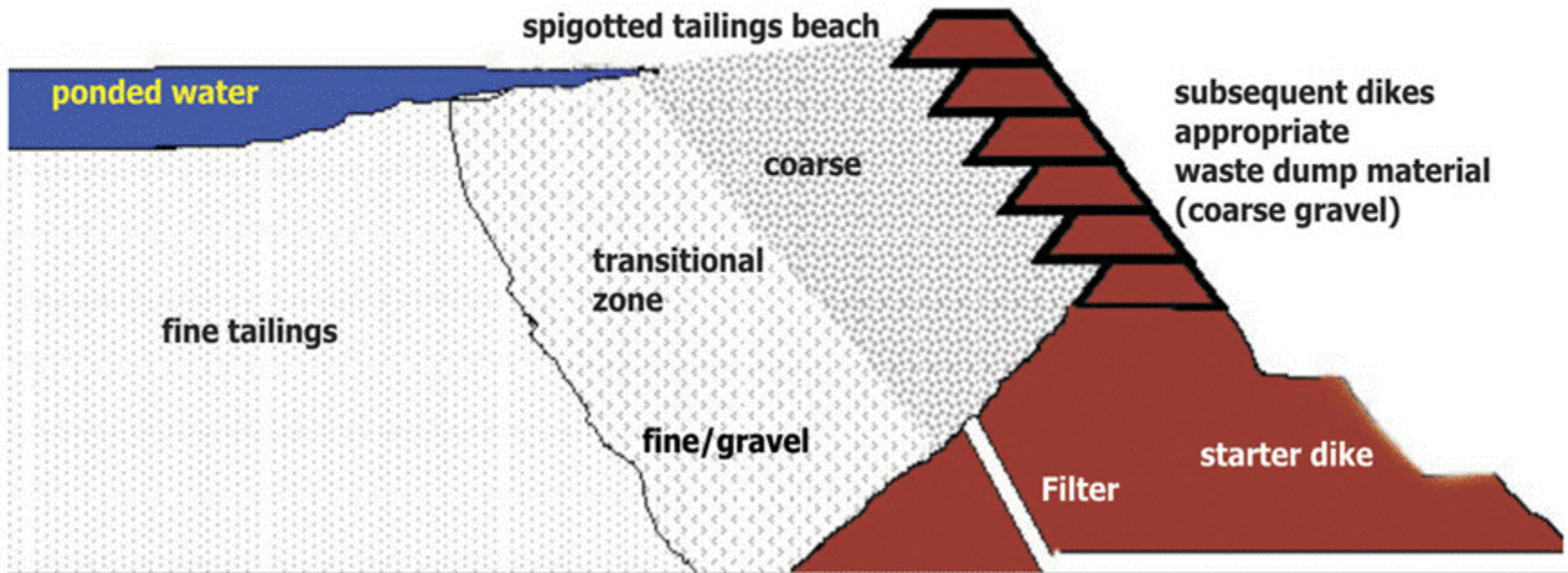


Existing Tailings Dam 5 - Nearing End of Life



Construction of a Tailings Dam

Upstream construction of a tailings dam



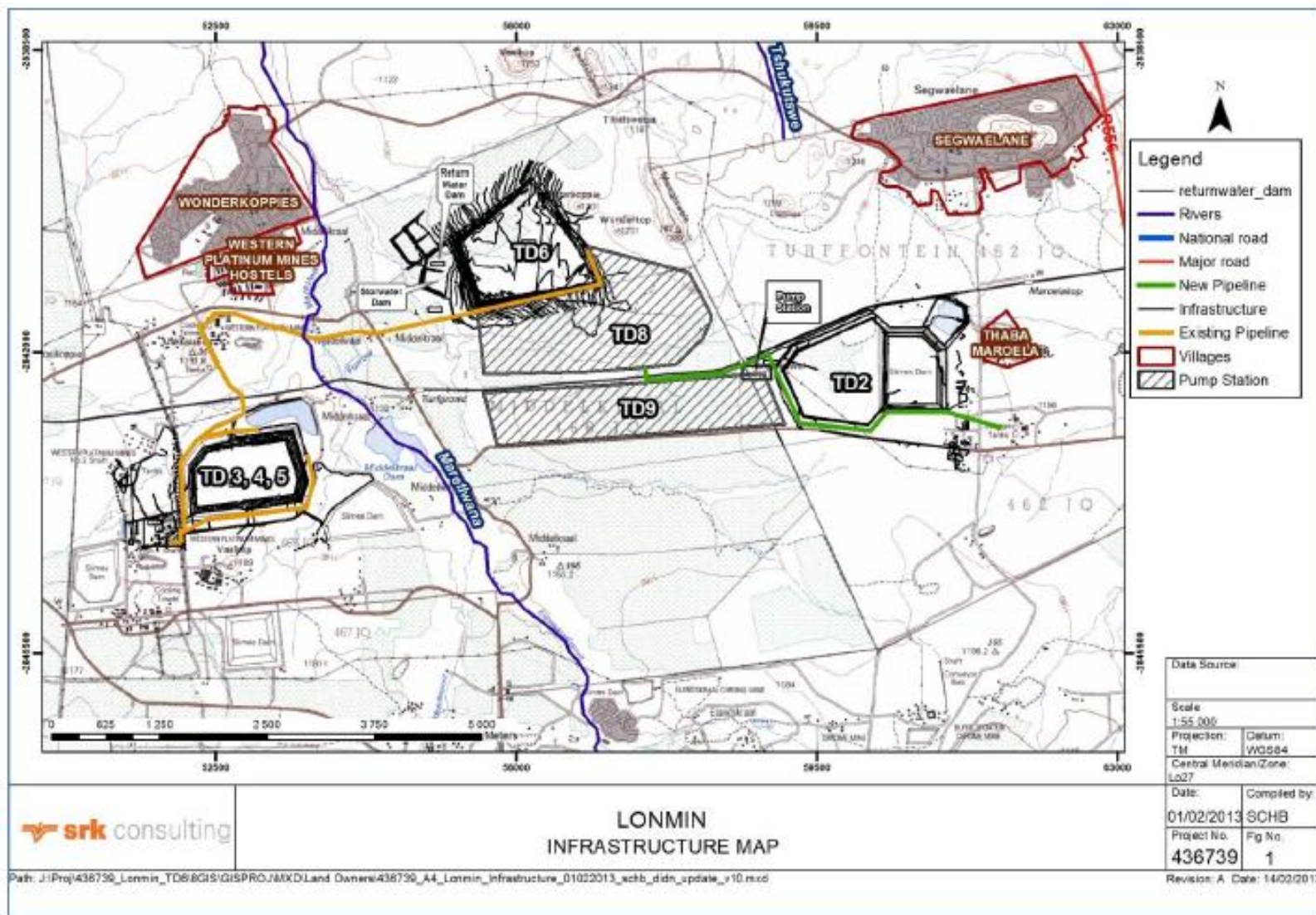
Tailings Dam 6 - Example of a New Dam



Water collection from dam



Proposed Tailings Dams and Infrastructure



Project Milestones

- **Construction of the Dam to commence July 2014**
- **First production / deposition by December 2015**
- **Deposition to continue for Life of Mine (50 years +)**

Management Team



Simon Scott
Acting Chief Executive

Simon joined Lonmin and the Board in September 2010, became CFO in November 2010 and was appointed as Acting CEO on 24 August 2012 in view of Mr Farmer's illness. He is a graduate with accounting and commerce degrees from the University of the Witwatersrand, and has also attended the management development program at the University of Cape Town. A South African registered chartered accountant, he has held a number of financial management roles in South Africa with local and global employers including over eight years with Anglo American. Most recently he was CFO of the JSE-listed Aveng Limited, a globally active engineering and construction group with significant involvement in the mining sector.



Albert Jamieson
Chief Commercial Officer

Albert joined Lonmin in 1989 after 8 years at Impala Platinum, where he was responsible for their concentrator operations. At Lonmin, he has held a number of senior management and executive positions in the mine production and commercial areas of the business including responsibility for investments in Africa, South America, North America, Australia and Japan. The commercial portfolio currently comprises business development, strategy, marketing and sales, exploration, legal and life of business planning. Albert has a BSc in Minerals Engineering from the University of Birmingham and an MBA from the University of Cape Town.



Barnard Mokwena
EVP, Human Capital & External Affairs

Barnard joined Lonmin in October 2005 as a Group Manager and was subsequently promoted to his current position. He previously worked in senior management positions in a range of sectors for a number of companies including Sentech, the South African Rail Commuter Corporation and the National Lottery Operator (UTHINGO). He holds a BA Phil from Urban Pontifical University, an MA Licentiate from Gregorian University and an EDP from Pretoria.



Mark Munroe
EVP, Mining

Mark joined Lonmin in March 2008 in the Mining business, becoming VP Capital Projects & Engineering before being appointed as EVP Mining in June 2009. Mark joined Lonmin from DRDGold, where he spent six years, holding a number of senior management positions including General Manager of DRDGold and CEO of DRDCapital. Prior to that, he worked for AngloGold for 12 years. He is a mining engineer and also has a degree in economics.



Thandeka Ncube
Business Transformation Manager, Shanduka Resources

Thandeka works with Shanduka's investee companies advising on transformation and broad based empowerment. She holds a Social Sciences degree from the City University of New York and an MBA from Henley Business School. She began her career working with various government institutions, developing strategy and policy for small and medium enterprises, then joined the retail banking side of Standard Bank, where she again focussed on the needs of SMEs.



Natascha Viljoen
EVP, Process Division

Natascha joined Lonmin in 2008 from BHP Billiton, where she was General Manager for Klipspruit mine. Her initial responsibility was for managing Lonmin's concentrators, and in May 2011 she was promoted to her current role, covering all concentrating, smelting and refining operations. She holds an engineering degree and is currently busy with an executive MBA with University of Cape Town. Her career stretches over various commodities and disciplines in the mining industry with 9 years in senior management roles. Before BHP Billiton she held positions with Anglo American Platinum and AngloGold.