

BASIC ASSESSMENT PROCESS FOR THE PROPOSED DEAL PARTY SUBSTATION AND 132 KV POWERLINE

BACKGROUND INFORMATION DOCUMENT



GARR/rump

BID No: 448711/1

PURPOSE OF THIS DOCUMENT

A Basic Assessment (BA) process has commenced to assist the Nelson Mandela Bay Municipality (NMBM) in determining the extent and significance of the environmental consequences associated with the proposed new 132/22 Kv electrical substation in Deal Party, Port Elizabeth, and installation of a 132 Kv powerline connecting it to the existing Swartkops substation.

Notice of a Basic Assessment Process is given in terms of regulation 54(3) of the regulations published in Government Gazette No. R543 under Section 24(5) of the National Environmental Management Act (Act No.107 of 1998), of intent to carry out the proposed activity.

Issues of concern and potential environmental and social impacts will be evaluated during the Basic Assessment process.

The purpose of this Background Information Document (BID) is to provide a brief description of the project and process that will be followed and to obtain initial comments and contributions from Interested and Affected Parties (IAPs) on the issues relating to the proposed development.

Findings of the BA, including concerns raised by IAPs, will be submitted to the Department of Economic Development, Environmental Affairs and Tourism (DEDEAT) for consideration.

IAPs are hereby invited to comment on the environmental, social and economic issues relating to the proposed powerline and substation. Your comments will ensure that relevant issues are evaluated and will form part of the Assessment. Kindly complete the registration form at the end of this document and send (either via email, post or fax) to Nicola Rump at SRK Consulting, to register your interest in the proposed activity and provide your input.

Your comment on this document must reach SRK Consulting by **12:00 on 13 July 2012**.

Nicola Rump, SRK Consulting

Postal address: P O Box 21842, Port Elizabeth, 6000

Fax: (041) 509 4850; E-mail: nrump@srk.co.za

DESCRIPTION OF THE DEVELOPMENT

Due to increased power demand in the Deal Party industrial area, a new 132/22 Kv substation is proposed to add capacity to the network and accommodate future load growth. The proposed project includes a 132 Kv double circuit powerline connecting the new substation in Deal Party to the existing Swartkops substation, in Port Elizabeth, Eastern Cape Province (see locality plan in Figure 3).

The powerline will be approximately 3.8 km long and will run overhead except for the section along Grahamstown Road, Deal Party, which will be below ground (due to space limitations) within the road reserve. Two route alternatives for the overhead powerline alignment will be assessed, as indicated in Figure 3, and the environmentally preferred option proposed for authorization.

An example of the overhead towers, consisting of self-supporting steel monopoles, known as the 'Petechane' design, typically used for this type of project is shown in Figure 1. A 25 m servitude is proposed, and maximum span lengths will be between 140m and 180m.

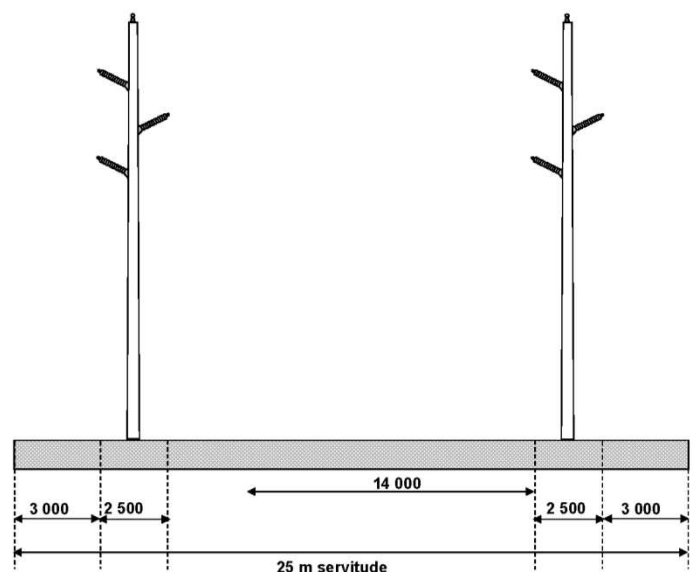


Figure 1: Typical 132 Kv powerline tower design

Two 132/22 Kv, 63 MVA transformers will be installed at the proposed substation, which will include 132KV

busbars and gantries facing south. A site of approximately 80 m x 80 m on Erf RE/125, accessible from Grahamstown Road, has been selected for the substation.

LEGAL REQUIREMENTS

The BA process for this assessment will be conducted in accordance with Government Gazette No. R543 in terms of the National Environmental Management Act (Act 107 of 1998) Environmental Impact Assessment regulations.

The National Environmental Management Act (NEMA) EIA regulations list activities that may have a significant impact on the environment, and which consequently require authorisation from the Department of Economic Development, Environmental Affairs and Tourism (DEDEAT). The regulations further specify the assessment process, and the information, that is required to enable DEDEAT to make a decision regarding the activity.

Activity 16, listed under the NEMA EIA regulations (GNR 544), is the main activity associated with the proposed powerline installation, calling for a BA process to be followed.

WHAT IS A BASIC ASSESSMENT?

A Basic Assessment is a planning and decision-making tool used to identify the environmental and social consequences of a proposed project, before the development takes place.

The BA needs to show the environmental authorities (DEDEAT) and the proponent (NMBM) what potential environmental, economic and social impacts can be expected from the proposed activity. Public issues and concerns must therefore be identified so that these can be evaluated. If required, the authorities will request that a full EIA be done to determine the extent of those impacts. In the case where an activity will have minimal impact on the environment, the authorities may grant authorisation based on the Basic Assessment Report.

PUBLIC PARTICIPATION

Public participation is the cornerstone of the Environmental Impact Assessment process. The principles of the National Environmental Management Act (NEMA) govern most aspects of Basic Assessments, including public participation. These include the ongoing provision of sufficient information (in a transparent manner) to Interested and Affected Parties (IAPs).

During the Public Participation Process, input from the proponent, technical experts, government authorities and the general public will be gathered to result in a better understanding of the project for all involved, and more informed decision-making throughout the process.

The key objective of public participation during the BA process is for IAPs to raise issues of concern and suggestions that need to be addressed in the BA.

IAPs will be provided with a 30-day comment period in which to raise issues and / or concerns in response to the Background Information Document. A draft Basic Assessment Report (BAR) will be compiled and will also

be available for public comment for a period of 40 days. The Final BAR including Comments and Responses from the public will be submitted to DEDEAT following the second public comment period. IAPs will be notified in writing of any decisions made by DEDEAT after submission of the final BAR.

Please note that communications regarding the process and the availability of reports will only be sent to registered IAPs. To register for the process, and thus receive further communications regarding this development, please register by sending the signed registration sheet at the back of this document, together with your contact details and nature of interest, to SRK Consulting.

BASIC ASSESSMENT PROCESS

Who is doing the Basic Assessment?

In terms of the Environmental Impact Assessment (EIA) regulations, an independent Environmental Assessment Practitioner must be appointed to conduct the Basic Assessment. SRK Consulting has been appointed to conduct the Basic Assessment. SRK will identify and assess the potential environmental impacts associated with the proposed activity by conducting an objective and independent Basic Assessment in which all the relevant information and opinions of Interested and Affected Parties (IAPs) will be collected and passed on to the Department of Economic Development, Environmental Affairs and Tourism (DEDEAT). In this way an informed decision-making process can take place.

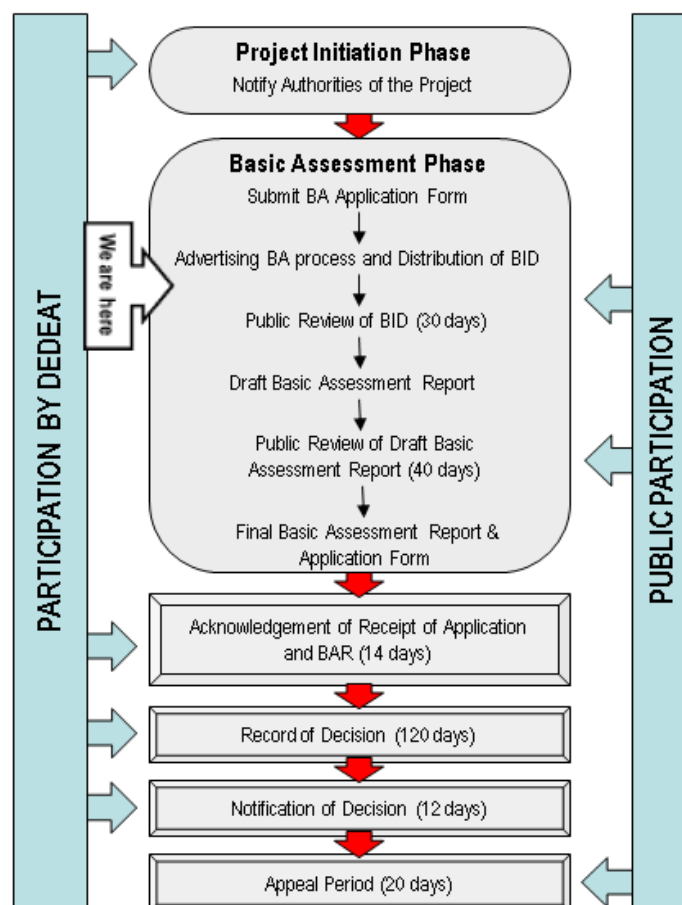


Figure 2: The Basic Assessment Process and stages where public comment will be invited

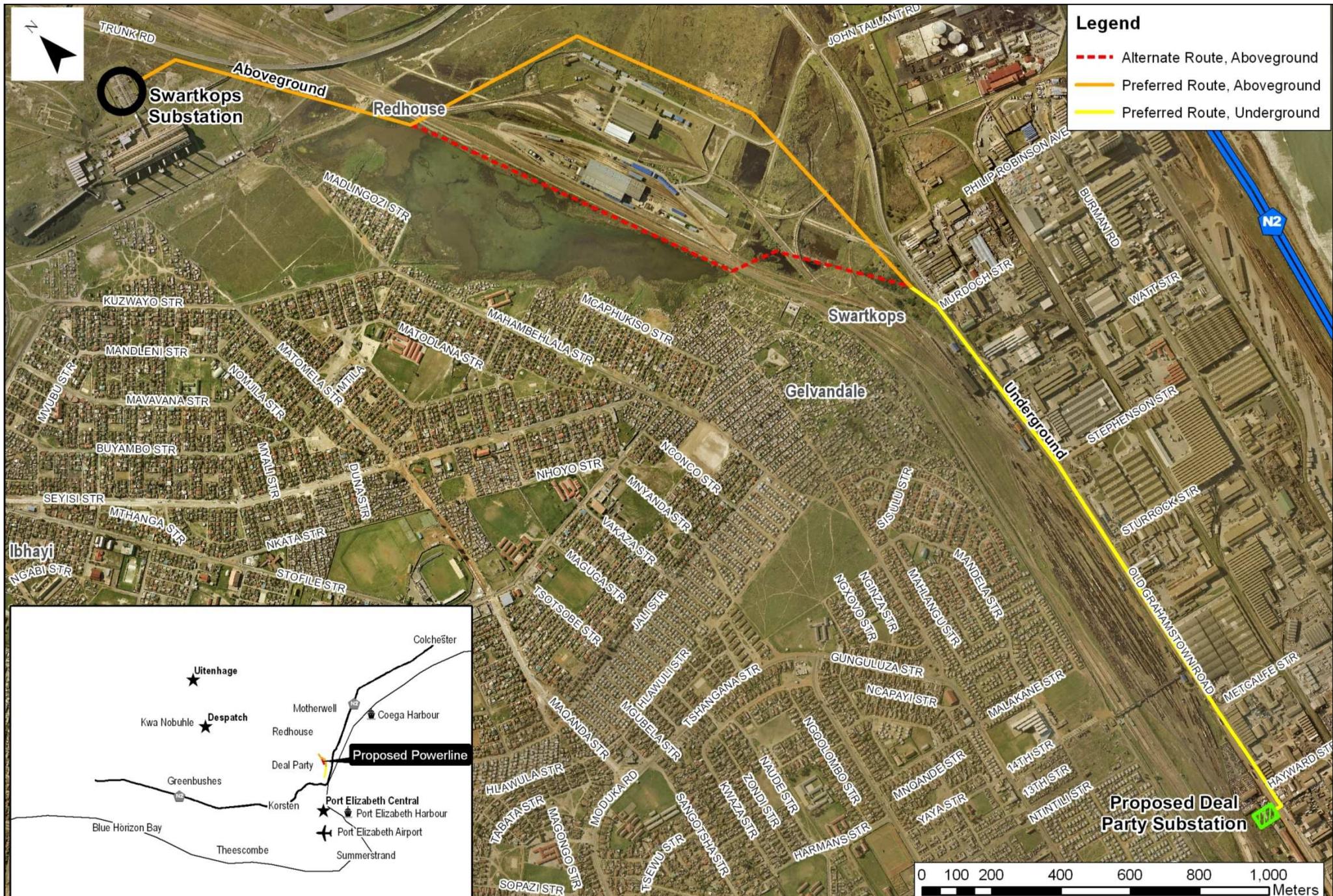


Figure 3: Locality plan for proposed Deal Party substation and 132 Kv powerline, showing route alternatives



Ground Floor, Bay Suites
 1a Humewood Rd,
 Humerail
 Port Elizabeth, 6001
 P O Box 21842
 Port Elizabeth 6000
 South Africa
 T: +27 (0) 41 509 4800
 F: +27 (0) 41 509 4850
 E: portelizabeth@srk.co.za
www.srk.co.za



REGISTRATION & COMMENT SHEET
BASIC ASSESSMENT PROCESS FOR THE PROPOSED DEAL PARTY SUBSTATION AND
132 Kv POWERLINE

I wish to register as an Interested and Affected Party and/or bring to the attention of SRK Consulting the following comments (please use additional sheets of paper if required).

Attention: **Nicola Rump**

Fax no: **041 509 4850**

(In order for your contact details to be captured on our database - Please fill out the sheet below)

Name of Respondent:	Title:
Organisation / Company:	
Nature of Interest:	
Postal Address:	
Postal Code:	
Telephone Number:	
Facsimile Number:	
Mobile Number:	
Email:	

Signed: _____

Date: _____