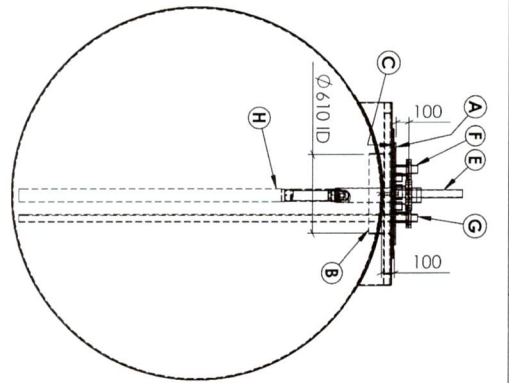
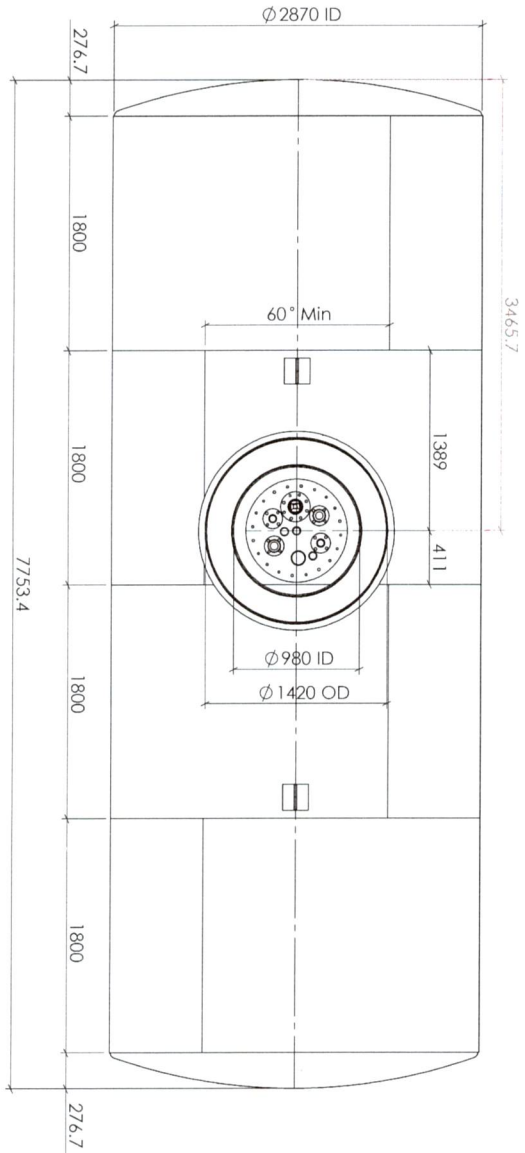
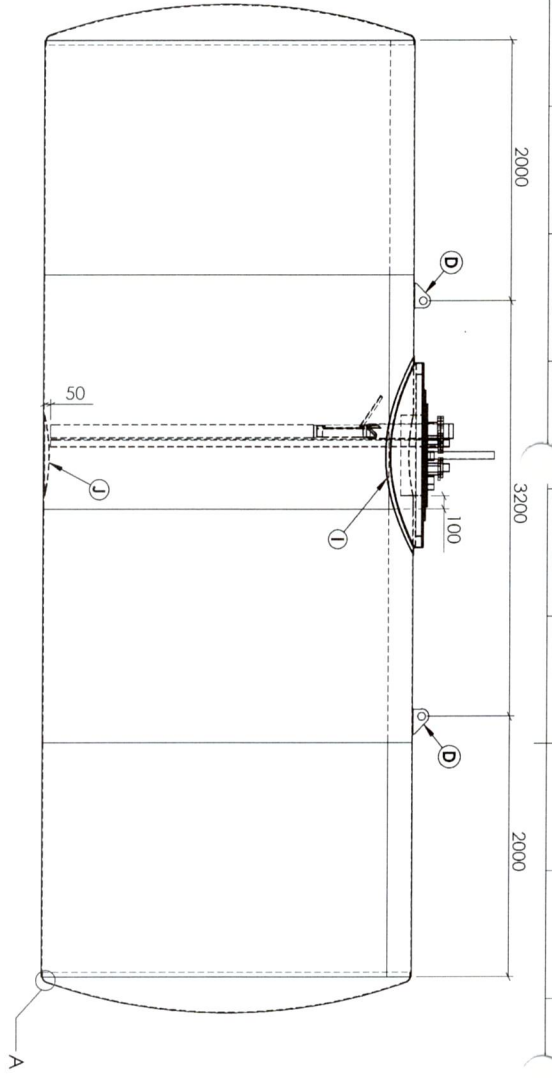


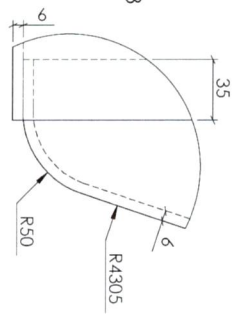
Design Data		
1	Product Description	46m <sup>3</sup> UST Composite Bonded
2	Drawing Number	TC-46KL-2870-UST
3	Design Code	SANS 1535:2007 Edition 2.3
4	Design Code Supplement	Sound Engineering Practise, ASME VIII Div. 1, SANS 10089-3
5	Design Burial Depth	1,520mm
6	Design Temperature	50° C Maximum, 0° C Minimum
7	Design Pressure	45kPa
8	Installation Standard	SANS 10089-3:2008
9	Inspection by	Tseba Construction QMS
10	Operating Pressure	Atmospheric
11	Operating Temperature	50° C Maximum, 0° C Minimum
12	Orientation	Horizontal, Stationary
13	Corrosion Allowance	0,00mm
14	Wind Loads	None – Tank is buried
15	Cyclic Loads	None
16	Seismic Loads	None
17	Overall Length	7,773m
18	Internal Diameter	2,870mm
19	Calculated Volume	48,379m <sup>3</sup>
20	Safe Gauge Height	2,700mm
21	Safe Gauge Volume	45,960m <sup>3</sup>
22	In Shop Test Pressure	45kPa (g)
23	On Site Test Pressure	35kPa (g)
24	Test Medium	Compressed Air
25	External Surface Preparation	ISO 8501 SA2½
26	External Surface Corrosion Protection	Glass Fibre Reinforced Plastic 2,54mm DFT Minimum
27	External Corrosion Protection Test	Holiday Spark Test @ 35kV
28	Process Fluid	Oxygenated Solvents & Hydro-Carbons
29	Material Cylindrical Shell	EN10025 S355JR
30	Material Heads	EN10025 S355JR
31	Material Flanges	ASME B16.5 150ASA RF SO – Mild Steel
32	Material Pipes	SANS 62 – Medium Class 10mm Mild Steel
33	Material Manhole Flange	Outside Diameter – 800mm Inside Diameter – 622mm PCD – 690mm, 20 off 18Ø Bolt Holes
34	Material Gaskets	3mm Compressed Non-Asbestos Fibre
35	Aperture Allocation	TI-ManholeId-Std-UST
36	Calculated Dry Weight	4,815kg

**PROPRIETARY AND CONFIDENTIAL**  
 THE INFORMATION CONTAINED IN THIS DRAWING IS THE SOLE PROPERTY OF TSEBA CONSTRUCTION (PTY) LTD. ANY REPRODUCTION IN PART OR AS A WHOLE WITHOUT THE WRITTEN PERMISSION OF TSEBA CONSTRUCTION IS PROHIBITED.

DO NOT SCALE DRAWING		REVISION	03
NAME	DATE	ISSUANCE	
T van Dyk	2015/03/03	QUALITY CONTROL	
DRAWN		DESIGNED	
CHKD		APPROVED	
		<b>D. Visser</b>	
 <b>TSEBA CONSTRUCTION</b>			
TITLE		DWG NO.	A3
46KL CB UST (2870ID)		TC-46KL-2870-UST	
Design Data and Model			
		SHEET 5 OF 20	



DETAIL A  
SCALE 1 : 3



FITTINGS LEGEND

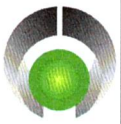
A	Standard Isoba Tanks UST Manhole Cover (See Drawing: IT-ManholeLid-Std-UST)
B	Manhole Neck (As per Design Data)
C	Manhole Flange (As per Design Data)
D	20mm Lifting Lug c/w 6mm Base Plate
E	50NB SABS 62 Dip Riser Pipe x500mm (Threaded both sides)
F	50NB Vent Flange c/w 50NB Socket
G	50NB SABS 62 Suction Drop Tube c/w 50NB Flange
H	100NB Filler Drop Tube (See Drawing: IT-UST-FillerPipe)
I	GRP Tank Sump Adaptor Ring
J	6mm Dip Plate (Situatd directly under Manhole)

**PROPRIETARY AND CONFIDENTIAL**  
THE INFORMATION CONTAINED IN THIS DRAWING IS THE SOLE PROPERTY OF TSEBA CONSTRUCTION (PTY) LTD. ANY REPRODUCTION IN PART OR AS A WHOLE WITHOUT THE WRITTEN PERMISSION OF TSEBA CONSTRUCTION IS PROHIBITED.

NO	REVISION	DATE	SIGNATURE	NAME
03		2015/03/03	<i>T van Dyk</i>	T van Dyk

DO NOT SCALE DRAWING

APPROVED: *D. Visser*  
DATE: 2015/03/03



**TSEBA CONSTRUCTION**

46KL CB UST (2870ID)  
General Arrangement Drawing

DWG NO: TC-46KL-2870-UST

A3