

Mr R. Gardiner

SRK Consulting S.A. (Pty) Ltd
Ground Floor Bay Suites
1a Humewood Road
Humerail
Port Elizabeth
6001

8 June 2017

Dear Mr Gardiner

INYANDA – ROODEPLAAT WEF

Your email to me on the 26th May 2017 and the Roodeplaar Wind Energy Farm (WEF) layout (**Figure 1**) below refers.

Animalia Consultants (Pty) Ltd (previously Animalia Zoological & Ecological Consultation CC) conducted and completed the 12-month preconstruction bat monitoring study at the proposed Inyanda Roodeplaar WEF, with the final report finalised in March 2016. Field data were acquired between July 2013 and July 2014.

1. I can confirm that the project description and technical details provided in the FEIR (**Table 1**) does not change the outcome, impact assessment ratings or proposed mitigation measures of the preconstruction bat monitoring study, the methodology used were therefore sufficient with regards to the project description. The layout provided in the FEIR (**Figure 1**) is similar to the layout used in the preconstruction bat monitoring and bat sensitivity map provided with the final bat preconstruction monitoring report. Any layout alternatives will need to be assessed and will trigger additional specialist work to be conducted.

Table 1: Technical details of the project description as provided in the FEIR.

Component	Description/dimensions
Number of Turbines	46 to 52
Hub Height	85 m
Blade Length	63 m
Rotor Diameter	130 m
Area occupied by inverter/transformer stations/substations	Substation: 0.3ha
Capacity of on-site substation	132 kV
Area occupied by both permanent and construction laydown areas	Construction – 23.99ha Operation – approximately 8ha
Area occupied by buildings	Existing buildings: 4ha
Length of internal roads	24.45km to be constructed
Width of internal roads	6m
Proximity to grid connection	Preferred Route: 35.14km Alternative 1: 41.37 Alternative 2: 45.52
Height of fencing	N/A
Type of fencing	The WEF will not be fenced

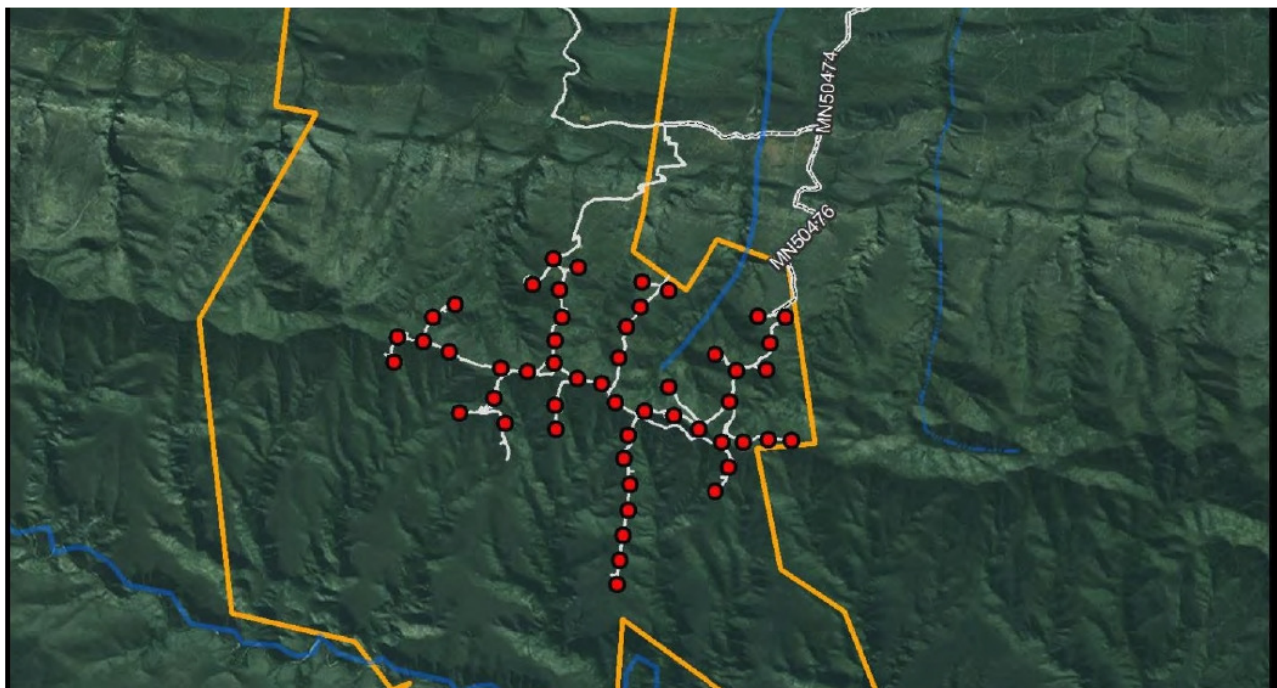


Figure 1: The layout provided in the FEIR.

2. The methodology and level of field work conducted (over 12 months) were sufficient to assess the probable impacts on bats and produce the final preconstruction bat monitoring report, based on the technical information and layout of **Table 1** and **Figure 1**. Any layout alternatives or changes in the technical specifications/project description will require additional specialist input/field work.
3. I can confirm that we were not hindered in any way during our field assessments and had full access to the site.

If there are any queries, please do not hesitate to contact me.



Werner Marais
Managing Director
werner@animalia-consult.co.za
Pr.Sci.Nat. (Zoological Science) 400169/10