

BASIC ASSESSMENT PROCESS FOR THE PROPOSED PE AIRPORT STORMWATER UPGRADE

BACKGROUND INFORMATION DOCUMENT



RUMP/SPET

BID No: 458154

PURPOSE OF THIS DOCUMENT

A Basic Assessment (BA) process has commenced to assist the Airports Company South Africa (ACSA) in determining the extent and significance of the environmental consequences associated with the proposed upgrading of the stormwater outfall system at Port Elizabeth Airport's secondary runway.

Notice of a Basic Assessment Process is given in terms of regulation 54(3) of the regulations published in Government Gazette No. R543 under Section 24(5) of the National Environmental Management Act (Act No.107 of 1998), of intent to carry out the proposed activity.

Issues of concern and potential environmental and social impacts will be evaluated during the Basic Assessment process.

The purpose of this Background Information Document (BID) is to provide a brief description of the project and BA process that will be followed, and to obtain initial comments and contributions from Interested and Affected Parties (IAPs) on the issues relating to the proposed development.

Findings of the BA, including concerns raised by IAPs, will be submitted to the Department of Environmental Affairs (DEA) for consideration.

IAPs are hereby invited to comment on the environmental, social and economic issues relating to the proposed airport runway stormwater upgrade. Your comments will ensure that relevant issues are evaluated and will form part of the Assessment. Kindly complete the registration form at the end of this document and send (either via email, post or fax) to Wanda Marais at SRK Consulting, to register your interest in the proposed activity and provide your input.

Your comment on this document must reach SRK Consulting by **12:00 on 3 April 2013**.

Wanda Marais, SRK Consulting

Postal address: P O Box 21842, Port Elizabeth, 6000

Fax: (041) 509 4850; E-mail: wmarais@srk.co.za

DESCRIPTION OF THE DEVELOPMENT

To upgrade the storm water outfall system servicing the Port Elizabeth Airport runways and surrounding area the installation of a stormwater drainage pipeline is proposed. The pipeline will run from the airport's secondary runway, under Allister Miller Drive and a railway line, to a discharge point on the banks of the Hume River.

The aim of the proposed upgrade is to alleviate ponding in the area during rainfall events and facilitate more efficient drainage of excess water from the area. The ponding in low-lying areas results from the high water table caused by impervious layers of rock underlying the area. Ponding may affect the layer work construction, and attract birdlife to the airport surroundings, thereby posing a risk to operations.

An underground pipeline (approximately 600 m long) with a number of subsoil drains draining into manholes or catchpits at intervals along the pipeline will be installed. The proposed pipeline will run along an existing pipeline, and discharge into the Hume River alongside an existing stormwater discharge point.

LEGAL REQUIREMENTS

The BA process for this assessment will be conducted in accordance with Government Gazette No. R543 in terms of the National Environmental Management Act (Act 107 of 1998) Environmental Impact Assessment regulations.

The National Environmental Management Act (NEMA) EIA regulations list activities that may have a significant impact on the environment, and which consequently require authorisation from the relevant environmental authority. The regulations further specify the assessment process, and the information, that is required to enable DEA to make a decision regarding the activity.

Activity 11, listed under the NEMA EIA regulations (GNR 544), is the main activity associated with the proposed pipeline installation, calling for a BA process to be followed.

WHAT IS A BASIC ASSESSMENT?

A Basic Assessment is a planning and decision-making tool used to identify the environmental and social consequences of a proposed project, before the development takes place.

The BA needs to show the environmental authorities (DEA) and the proponent (ACSA) what potential environmental, economic and social impacts can be expected from the proposed activity. Public issues and concerns must therefore be identified so that these can be evaluated. If required, the authorities will request that a full EIA be done to determine the extent of those impacts. In the case where an activity will have minimal impact on the environment, the authorities may grant authorisation based on the Basic Assessment Report.

PUBLIC PARTICIPATION

Public participation is the cornerstone of the Environmental Impact Assessment process. The principles of the National Environmental Management Act (NEMA) govern most aspects of Basic Assessments, including public participation. These include the ongoing provision of sufficient information (in a transparent manner) to Interested and Affected Parties (IAPs).

During the Public Participation Process, input from the proponent, technical experts, government authorities and the general public will be gathered to result in a better understanding of the project for all involved, and more informed decision-making throughout the process.

The key objective of public participation during the BA process is for IAPs to raise issues of concern and suggestions that need to be addressed in the BA.

IAPs will be provided with a 30-day comment period in which to raise issues and / or concerns in response to the Background Information Document. A draft Basic Assessment Report (BAR) will be compiled and will also be available for public comment for a period of 40 days. The Final BAR including Comments and Responses from the public will be submitted to DEDEAT following the second public comment period. IAPs will be notified in writing of any decisions made by DEDEAT after submission of the final BAR.

Please note that communications regarding the process and the availability of reports will only be sent to registered IAPs. To register for the process, and thus receive further communications regarding this development, please register by sending the signed registration sheet at the back of this document, together with your contact details and nature of interest, to SRK Consulting.

BASIC ASSESSMENT PROCESS

Who is doing the Basic Assessment?

In terms of the Environmental Impact Assessment (EIA) regulations, an independent Environmental Assessment Practitioner must be appointed to conduct the Basic Assessment. SRK Consulting has been appointed to conduct the Basic Assessment. SRK will identify and assess the potential environmental impacts associated with the proposed activity by conducting an objective and independent Basic Assessment in which all the relevant information and opinions of Interested and Affected Parties (IAPs) will be collected and passed on to the Department of Environmental Affairs (DEA). In this way an informed decision-making process can take place.

Basic Assessment Process

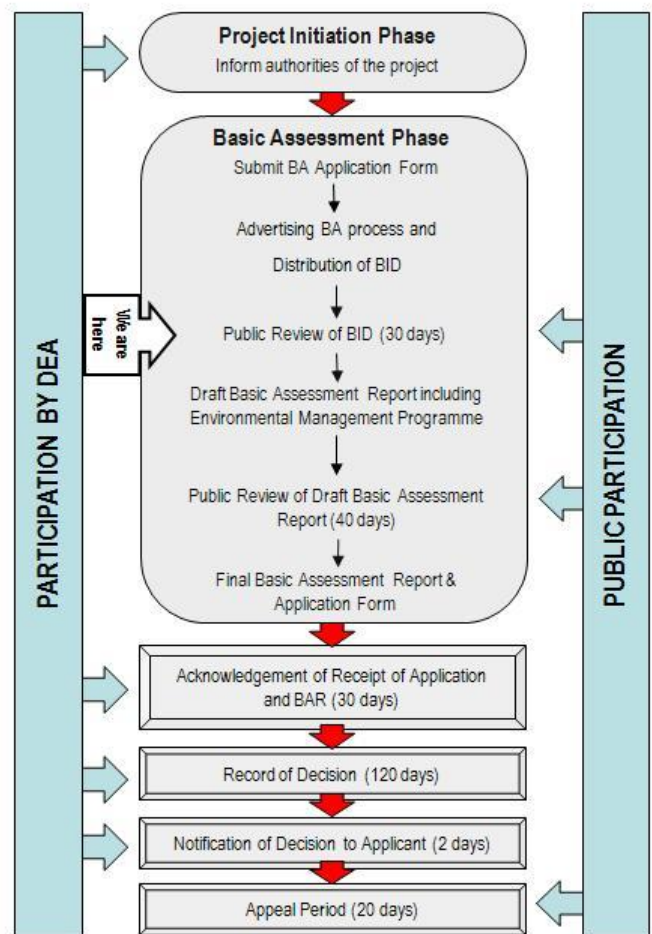
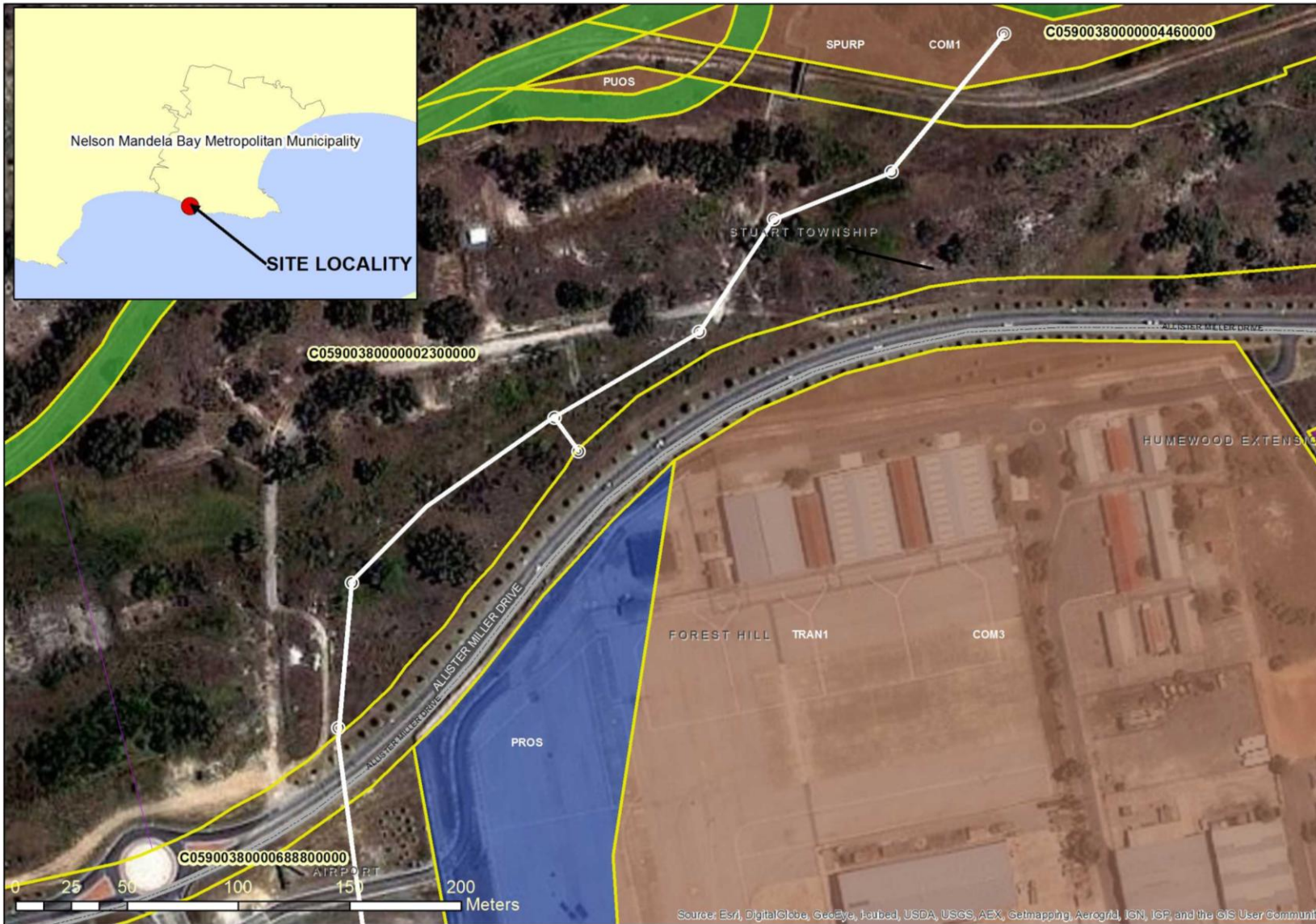


Figure 1: The Basic Assessment Process and stages where public comment will be invited



Legend

- Drainage Points
- Proposed Pipeline Route
- ▬ Allister Miller Drive
- ▭ Cadastral_Nov2010
- ▭ Suburbs

Zoning

- ▭ COM1
- ▭ COM3
- ▭ PARK
- ▭ PROS

Scale:	1:1 800	A3
Projection:	TM25	Datum: HBH94
Central Meridian/Zone:	LO25	
Date:	05/03/2013	Compiled by: CAMGS
Project No.	458154	Fig No. 002
Revision:	A Date:	



**AECOM PE Airport Stormwater
SITE LOCALITY**

Figure 2: Locality plan for proposed Port Elizabeth airport runway stormwater upgrade pipeline

