

BASIC ASSESSMENT PROCESS FOR THE PROPOSED SEAVIEW & GREENBUSHES BULK WATER SUPPLY, NELSON MANDELA BAY

BACKGROUND INFORMATION DOCUMENT



MARW/NELK

BID No: 485194

JANUARY 2016

PURPOSE OF THIS DOCUMENT

This Background Information Document (BID) serves as notice (in terms of regulation 41(2) published in Government Gazette No. R982 under Section 24(5) of the National Environmental Management Act 107 of 1998) of the intent to construct bulk water infrastructure within the Seaview and Greenbushes areas, Nelson Mandela Bay, Eastern Cape.

This document will provide you with a brief description of the proposed project and the Basic Assessment (BA) Process that will be followed, as well as give you the opportunity to:

- **Register as an Interested and Affected Party (IAP); and**

Notifications regarding the process and the availability of reports will only be sent to registered IAPs.

- **Provide initial comments on any environmental, social and economic issue relating to the proposed development.**

During the BA Process which will follow, issues of concern and potential environmental and social impacts will be evaluated. Your comments will ensure that relevant issues are evaluated and will form part of the BA.

You are hereby invited to register your interest in the proposed activity and provide your input by completing the Registration & Comment Form at the end of this document and sending it (either via email, post or fax) to:

Wanda Marais
SRK Consulting

Postal address: P O Box 21842, Port Elizabeth, 6000

Fax: (041) 509 4850; E-mail: wmarais@srk.co.za

Your comments must reach SRK Consulting by **12:00 on 22 February 2016**, to ensure that they will be included and addressed in the draft report. You may however, request to be registered as an IAP at any time during the BA Process.

DESCRIPTION OF THE DEVELOPMENT

The proposed development aims to expand current bulk water supply infrastructure in order to address the future provision of potable water to the Seaview and Greenbushes supply areas. The Nelson Mandela Bay Municipality proposes to develop Phase 1 which entails the provision of bulk water infrastructure to 8,020 erven within the relevant supply areas. The proposed bulk infrastructure for this phase is based on proposed developments currently at planning stage.

The proposed project has been authorised before in 2009, however the authorisation lapsed and a new application and process are required.

Seaview Bulk Water Supply (Phase 1)

This supply area is currently supplied from the Seaview pump station 1.2 ML sump/ reservoir and via a number of small local schemes drawing directly from the two adjacent Churchill pipelines. The existing Seaview pump station complex will be expanded to accommodate the proposed bulk infrastructure. The infrastructure planned for the Seaview supply area is as follows:

- The construction of a 2.5 ML clear water bulk storage reservoir at the existing Seaview pump station complex;
- The construction of a 2.5 ML clear water bulk storage reservoir at the proposed Upper Seaview Bulk Storage Reservoir site;
- The construction of a 3 m wide gravel access road at the 2.5 ML reservoir at the Upper Seaview Bulk Storage Reservoir site;
- The upgrading/ modification of the pump station at the existing Seaview pump station complex to supply the proposed 2.5 ML reservoir at the Upper Seaview reservoir site;
- The construction of a pumping main, 315 mmØ pipeline from the Seaview pump station complex to the 2.5 ML Upper Seaview Bulk Storage Reservoir, approximately 1,630 m in length within a proposed 3 m wide servitude;
- The construction of a 350 mmØ bulk gravity supply pipeline from the 2.5 ML bulk storage reservoir at the Upper Seaview site,

approximately 1,300 m in length, which connects to a Tee above the Seaview pump station complex and thereafter splits towards the supply areas;

- The construction of a 250 mmØ gravity main pipeline (approximately 3,220 m in length) connecting Zone 2 to the Tee above the Seaview pump station, along a 3 m wide pipeline servitude;
- The construction of a 315 mmØ (1,500 m in length) gravity main pipeline connecting Zone 5 to the Tee above the Seaview pump station, along a 3 m wide pipeline servitude;
- The construction of a 315 mmØ (400 m in length) bulk gravity supply pipeline from the 2.5 ML bulk storage reservoir at the Seaview pump station complex connecting into the existing and future pipe-work below the reservoir;
- Gravity connections from the service reservoirs to existing and proposed reticulation (inter-connections between proposed and new pipelines within the Seaview pump station complex); and
- Installation of metering at the Seaview pump station complex.

Greenbushes Bulk Water Supply (Phase 1)

As a result of increasing developments inland and up to Cape Road is it necessary to augment the reticulation of water to this area. Therefore, it is proposed to install a 750 mmØ (outside diameter) steel pipeline, approximately 3,500 m in length, connecting the Greenbushes reservoir to the existing pipe-work at the Chelsea reservoir site.

LEGAL REQUIREMENTS

The environmental authorisation process prescribed for listed activities under Listing Notices 1, 2 and 3 published in Government Gazette Numbers R983, R984 and R985 respectively are defined in the Environmental Impact Assessment (EIA) Regulations made under section 24(5) of the National Environmental Management Act, 2008 (Act No. 107 of 1998) (NEMA).

Activity 9, listed in GN.983 (Listing Notice 1) and Activity 2 listed in GN R.985 (Listing Notice 3) of the NEMA 2014 EIA regulations are the main activities associated with the proposed project:

GNR 983 (Listing Notice 1): No. 9 – The development of infrastructure exceeding 1,000 metres in length for the bulk transportation of water or storm water -

- (i) with an internal diameter of 0,36 metres or more; or
- (ii) with a peak throughput of 120 litres per second or more;

excluding where-

- (a) such infrastructure is for bulk transportation of water or storm water or storm water drainage inside a road reserve; or
- (b) where such development will occur within an urban area.

GNR 985 (Listing Notice 3): No. 2 – The development of reservoirs for bulk water supply with a capacity of more than 250 cubic metres.

(b) In Eastern Cape:

- (ff) Areas within 10 kilometres from national parks or world heritage sites or 5 kilometres from any other protected area identified in terms of NEMPAA or from the core area of a biosphere reserve;

WHAT IS A BASIC ASSESSMENT?

A Basic Assessment is a tool used to identify the likely environmental consequences of a proposed project, before the development takes place. The purpose of the BA is to describe the potential consequences of the proposed development in environmental, economic and social terms. Public issues and concerns must therefore be identified timeously so that these can be recorded and responded to in the BA. All comments received in writing are included in the submission to the competent authority for their consideration.

The authorities may, if required, request that a full Environmental Impact Assessment (EIA) be done to determine the extent of those impacts. However, in the case where an activity will likely have minimal impact on the environment, the authorities may grant authorisation based on the BA Report.

BASIC ASSESSMENT PROCESS

The flow diagram below provides an overview of the BA process:

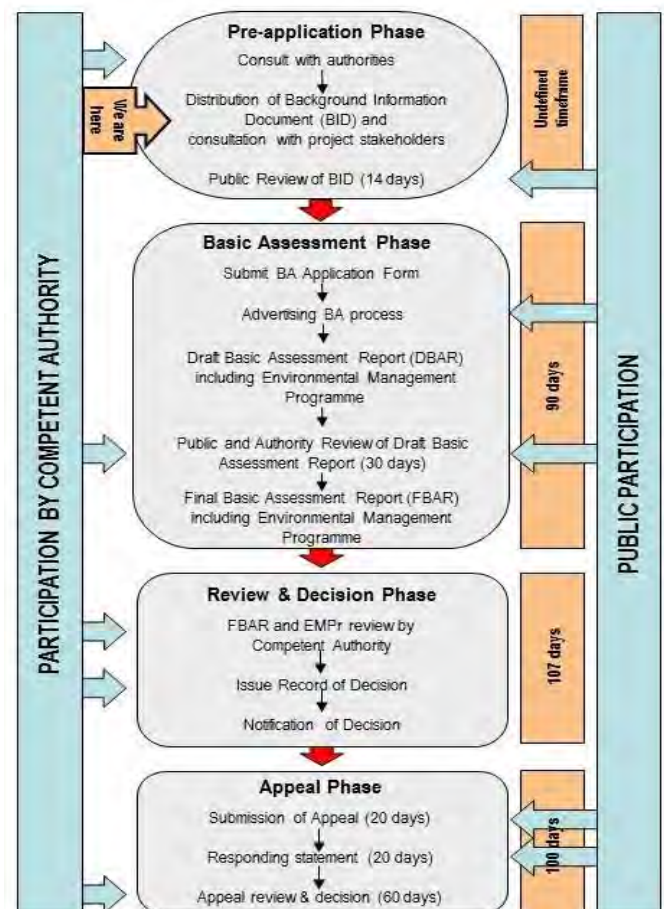


Figure 1: The Basic Assessment Process and stages where public comment will be invited

Who is doing the BA?

In terms of the Environmental Impact Assessment (EIA) regulations, an independent Environmental Assessment Practitioner must be appointed to conduct the BA. SRK Consulting has been appointed to conduct the assessment. SRK will identify and assess the potential environmental impacts associated with the proposed activity by conducting an objective and independent environmental assessment in which all the relevant information and opinions of Interested and Affected Parties (IAPs) will be collected and passed on to DEDEAT. In this way an informed decision-making process can take place.

PUBLIC PARTICIPATION

Public participation is the cornerstone of the Basic Assessment process. The principles of the National Environmental Management Act (NEMA) govern most aspects of Basic Assessments, including public

participation. These include the ongoing provision of sufficient information (in a transparent manner) to Interested and Affected Parties (IAPs).

During the Public Participation Process, input from the applicant, technical experts, government authorities and the general public will be gathered to result in a better understanding of the project for all involved, and more informed decision-making throughout the process. IAPs will be given the opportunity to comment on the findings of the draft and final reports, and findings of the specialist studies during the specified comment periods.

IAPs are hereby invited to comment on environmental, social and economic issues relating to the proposed project.

To receive further communications regarding this development, please register by sending the completed and signed registration sheet at the back of this document to SRK Consulting.

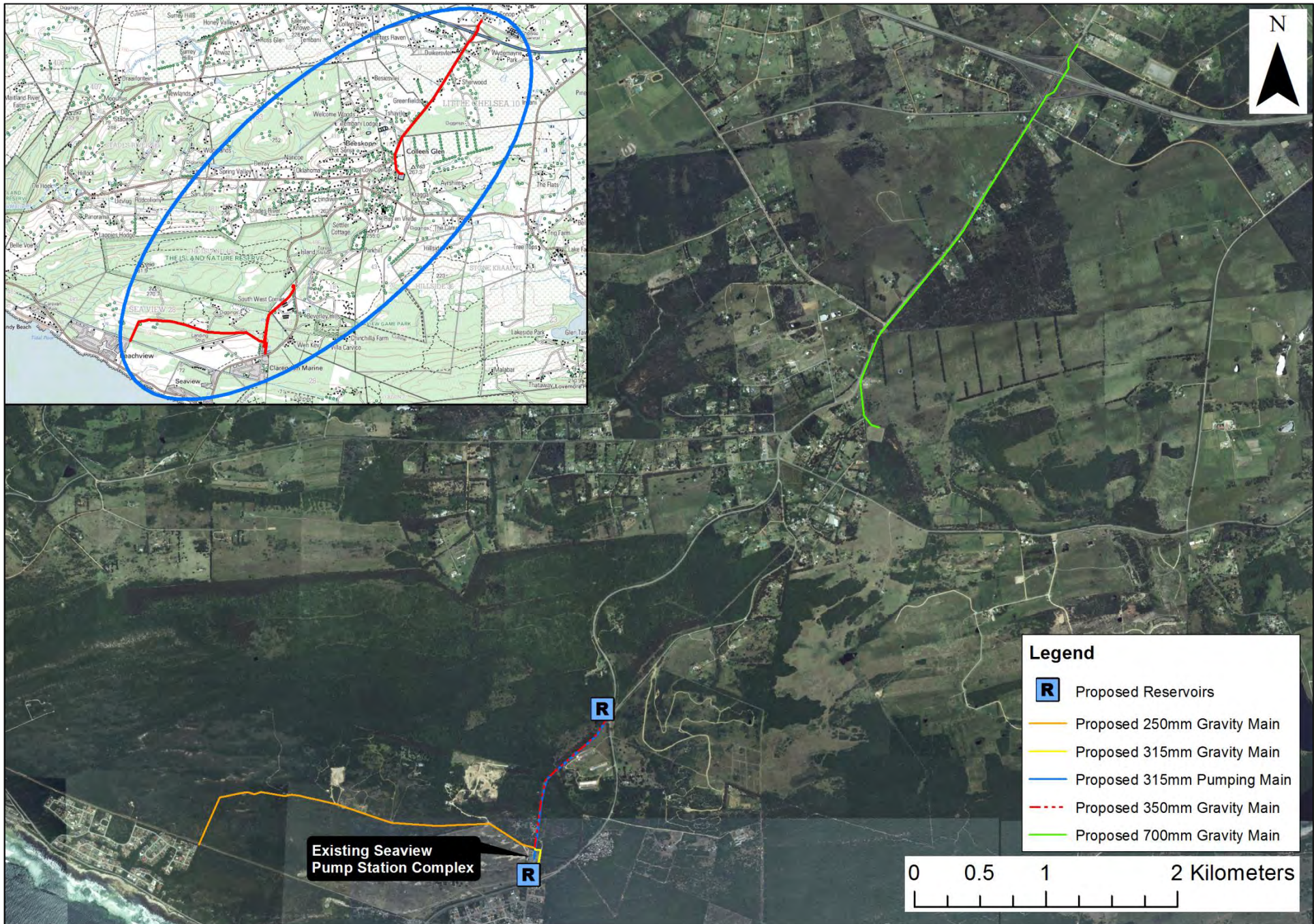


Figure 2: Project Locality Plan

