


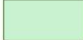

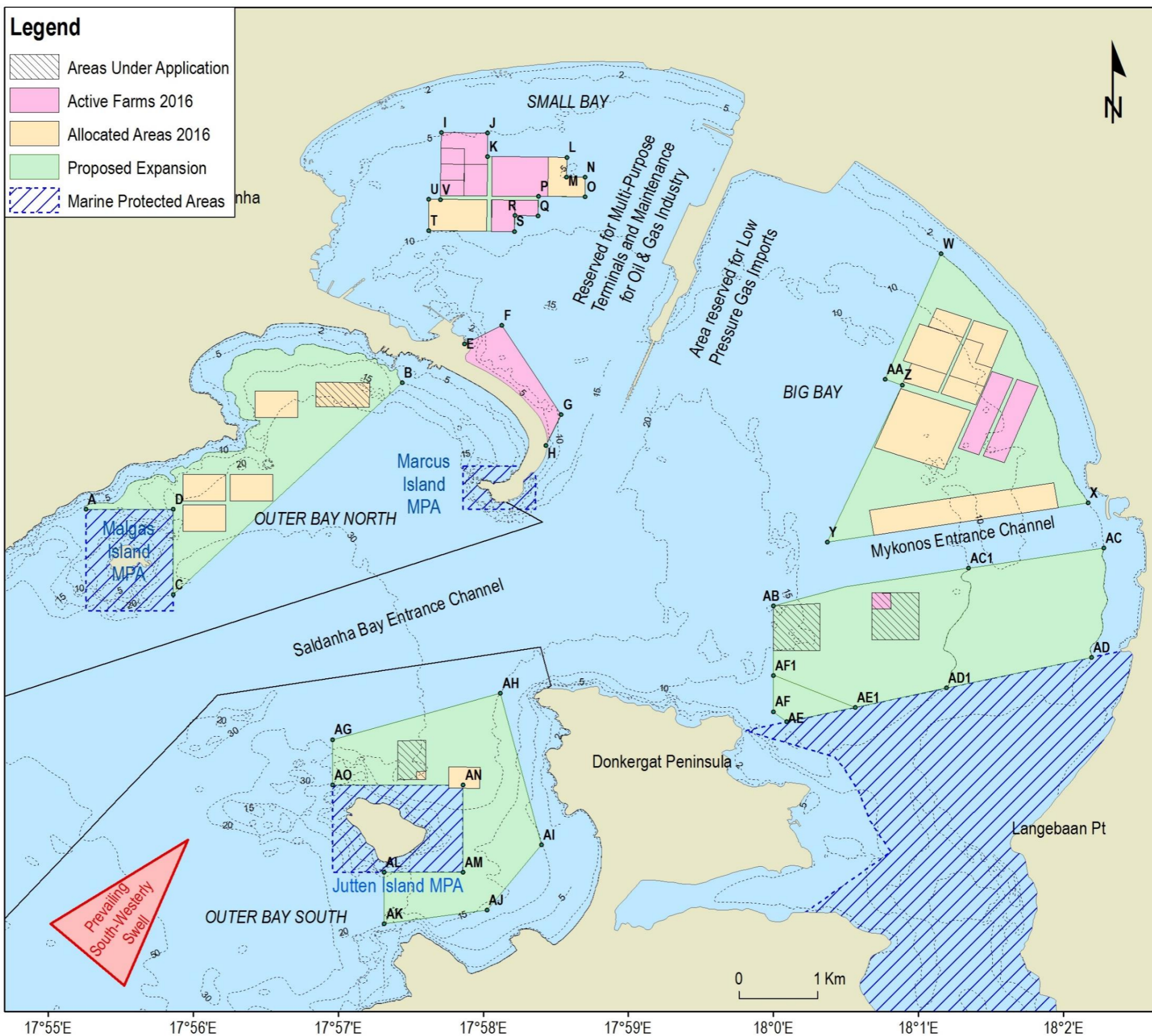


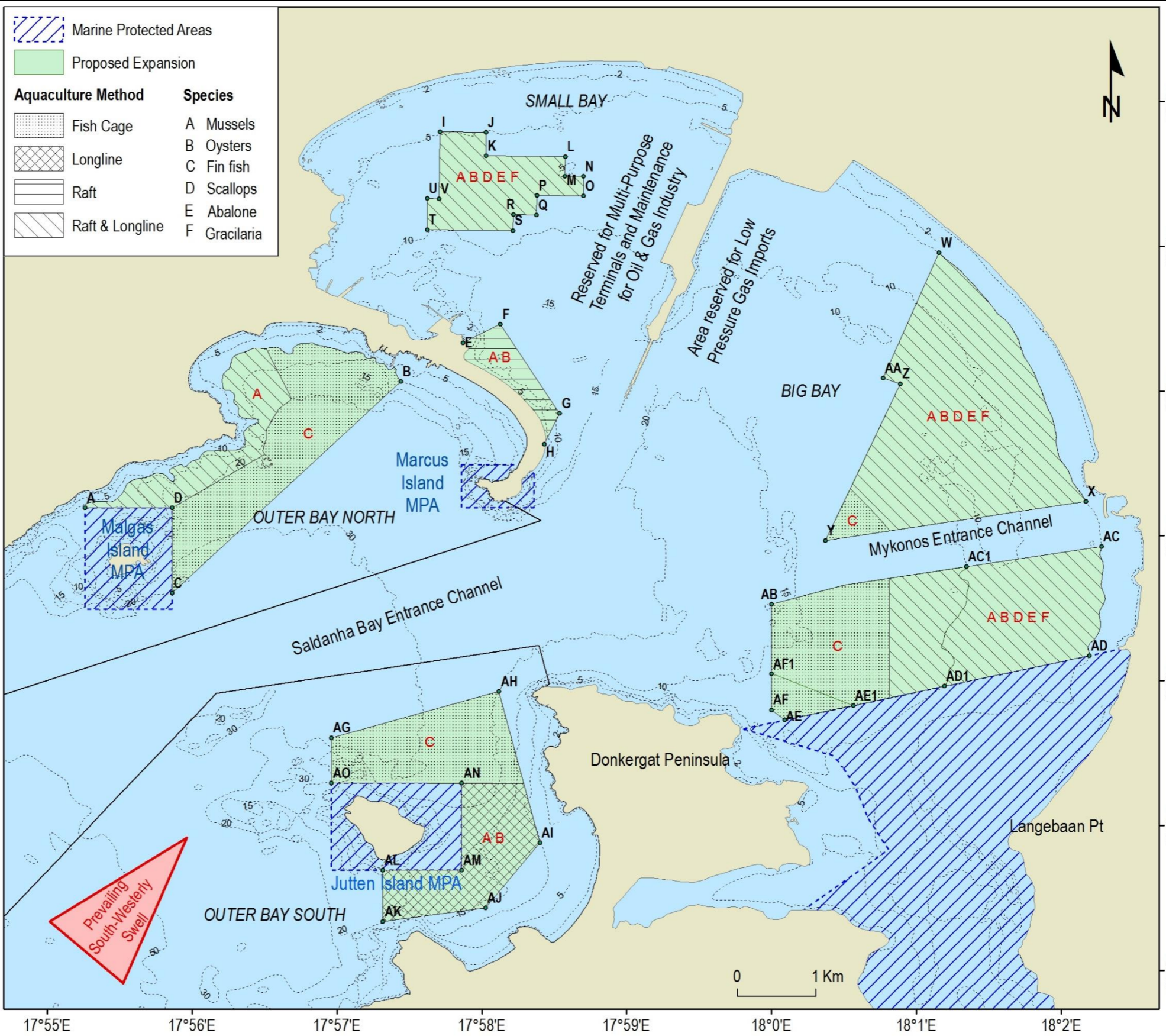
Point	Lat S	Long E
A	33° 2.806' 17°	55.261'
B	33° 1.934' 17°	57.442'
C	33° 3.393' 17°	55.862'
D	33° 2.806' 17°	55.862'
E	33° 1.665' 17°	57.870'
F	33° 1.537' 17°	58.127'
G	33° 2.153' 17°	58.537'
H	33° 2.365' 17°	58.432'
I	33° 0.21' 17°	57.71'
J	33° 0.213' 17°	58.03'
K	33° 0.375' 17°	58.028'
L	33° 0.38' 17°	58.575'
M	33° 0.515' 17°	58.573'
N	33° 0.517' 17°	58.702'
O	33° 0.652' 17°	58.7'
P	33° 0.648' 17°	58.379'
Q	33° 0.783' 17°	58.377'
R	33° 0.782' 17°	58.217'
S	33° 0.89' 17°	58.215'
T	33° 0.889' 17°	57.622'
U	33° 0.67' 17°	57.623'
V	33° 0.671' 17°	57.704'
W	33° 1.045' 18°	1.156'
X	33° 2.763' 18°	2.171'
Y	33° 3.031' 18°	0.371'
Z	33° 1.948' 18°	0.89'
AA	33° 1.91' 18°	0.77'
AB	33° 3.47' 18°	0
AC	33° 3.072' 18°	2.278'
AC1	33° 3.212' 18°	1.345'
AD	33° 3.82' 18°	2.193'
AD1	33° 4.036' 18°	1.195'
AE	33° 4.27' 18°	0.089'
AE1	33° 4.17' 18°	0.563'
AF	33° 4.2' 18°	0
AF1	33° 3.95' 18°	0
AG	33° 4.393' 17°	56.961'
AH	33° 4.074' 17°	58.118'
AI	33° 5.117' 17°	58.401'
AJ	33° 5.566' 17°	58.024'
AK	33° 5.662' 17°	57.316'
AL	33° 5.306' 17°	57.316'
AM	33° 5.307' 17°	57.861'
AN	33° 4.706' 17°	57.861'
AO	33° 4.706' 17°	56.961'

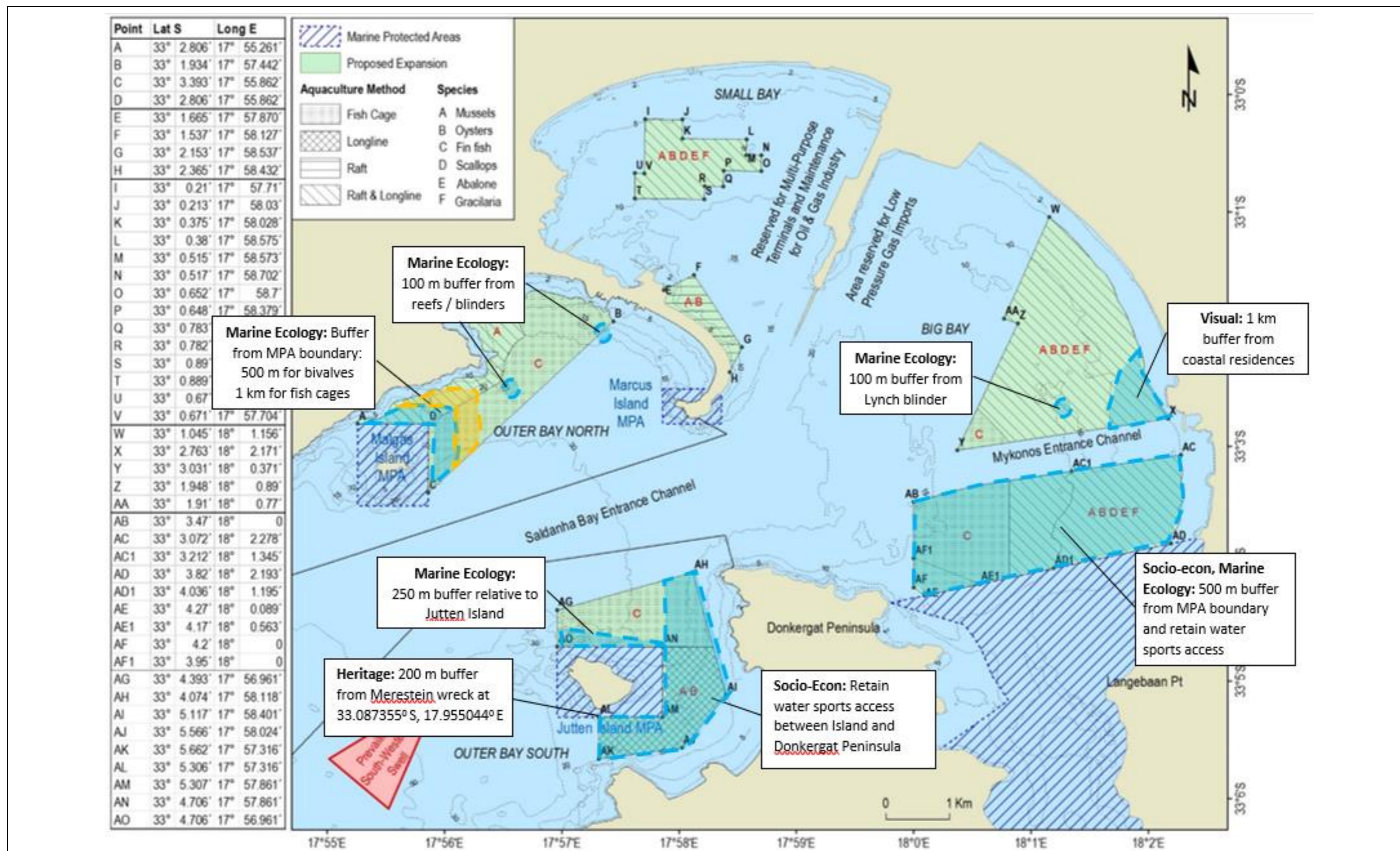
Legend

-  Areas Under Application
-  Active Farms 2016
-  Allocated Areas 2016
-  Proposed Expansion
-  Marine Protected Areas



Point	Lat S	Long E
A	33° 2.806'	17° 55.261'
B	33° 1.934'	17° 57.442'
C	33° 3.393'	17° 55.862'
D	33° 2.806'	17° 55.862'
E	33° 1.665'	17° 57.870'
F	33° 1.537'	17° 58.127'
G	33° 2.153'	17° 58.537'
H	33° 2.365'	17° 58.432'
I	33° 0.21'	17° 57.71'
J	33° 0.213'	17° 58.03'
K	33° 0.375'	17° 58.028'
L	33° 0.38'	17° 58.575'
M	33° 0.515'	17° 58.573'
N	33° 0.517'	17° 58.702'
O	33° 0.652'	17° 58.7'
P	33° 0.648'	17° 58.379'
Q	33° 0.783'	17° 58.377'
R	33° 0.782'	17° 58.217'
S	33° 0.89'	17° 58.215'
T	33° 0.889'	17° 57.622'
U	33° 0.67'	17° 57.623'
V	33° 0.671'	17° 57.704'
W	33° 1.045'	18° 1.156'
X	33° 2.763'	18° 2.171'
Y	33° 3.031'	18° 0.371'
Z	33° 1.948'	18° 0.89'
AA	33° 1.91'	18° 0.77'
AB	33° 3.47'	18° 0'
AC	33° 3.072'	18° 2.278'
AC1	33° 3.212'	18° 1.345'
AD	33° 3.82'	18° 2.193'
AD1	33° 4.036'	18° 1.195'
AE	33° 4.27'	18° 0.089'
AE1	33° 4.17'	18° 0.563'
AF	33° 4.2'	18° 0'
AF1	33° 3.95'	18° 0'
AG	33° 4.393'	17° 56.961'
AH	33° 4.074'	17° 58.118'
AI	33° 5.117'	17° 58.401'
AJ	33° 5.566'	17° 58.024'
AK	33° 5.662'	17° 57.316'
AL	33° 5.306'	17° 57.316'
AM	33° 5.307'	17° 57.861'
AN	33° 4.706'	17° 57.861'
AO	33° 4.706'	17° 56.961'





Marine Protected Areas

Aquaculture Method

- Fish Cage
- Raft
- Raft & Longline

Species

- A Mussels
- B Oysters
- C Fin fish
- D Scallops
- E Abalone
- F Gracilaria

Point	Lat S	Long E
A	33° 2.535'	17° 55.855'
B	33° 1.934'	17° 57.442'
C	33° 2.801'	17° 56.504'
D	33° 2.653'	17° 56.126'
E	33° 1.665'	17° 57.870'
F	33° 1.537'	17° 58.127'
G	33° 2.153'	17° 58.537'
H	33° 2.365'	17° 58.432'
I	33° 0.21'	17° 57.71'
J	33° 0.213'	17° 58.03'
K	33° 0.375'	17° 58.028'
L	33° 0.38'	17° 58.575'
M	33° 0.515'	17° 58.573'
N	33° 0.517'	17° 58.702'
O	33° 0.652'	17° 58.7'
P	33° 0.648'	17° 58.379'
Q	33° 0.783'	17° 58.377'
R	33° 0.782'	17° 58.217'
S	33° 0.89'	17° 58.215'
T	33° 0.889'	17° 57.622'
U	33° 0.67'	17° 57.623'
V	33° 0.671'	17° 57.704'
W	33° 1.045'	18° 1.156'
X	33° 1.892'	18° 1.822'
Y	33° 2.851'	18° 1.575'
Z	33° 3.031'	18° 0.371'
AA	33° 1.948'	18° 0.89'
AB	33° 1.91'	18° 0.77'
AC	33° 4.393'	17° 56.961'
AD	33° 4.144'	17° 57.861'
AE	33° 4.706'	17° 57.861'
AF	33° 4.571'	17° 56.961'

