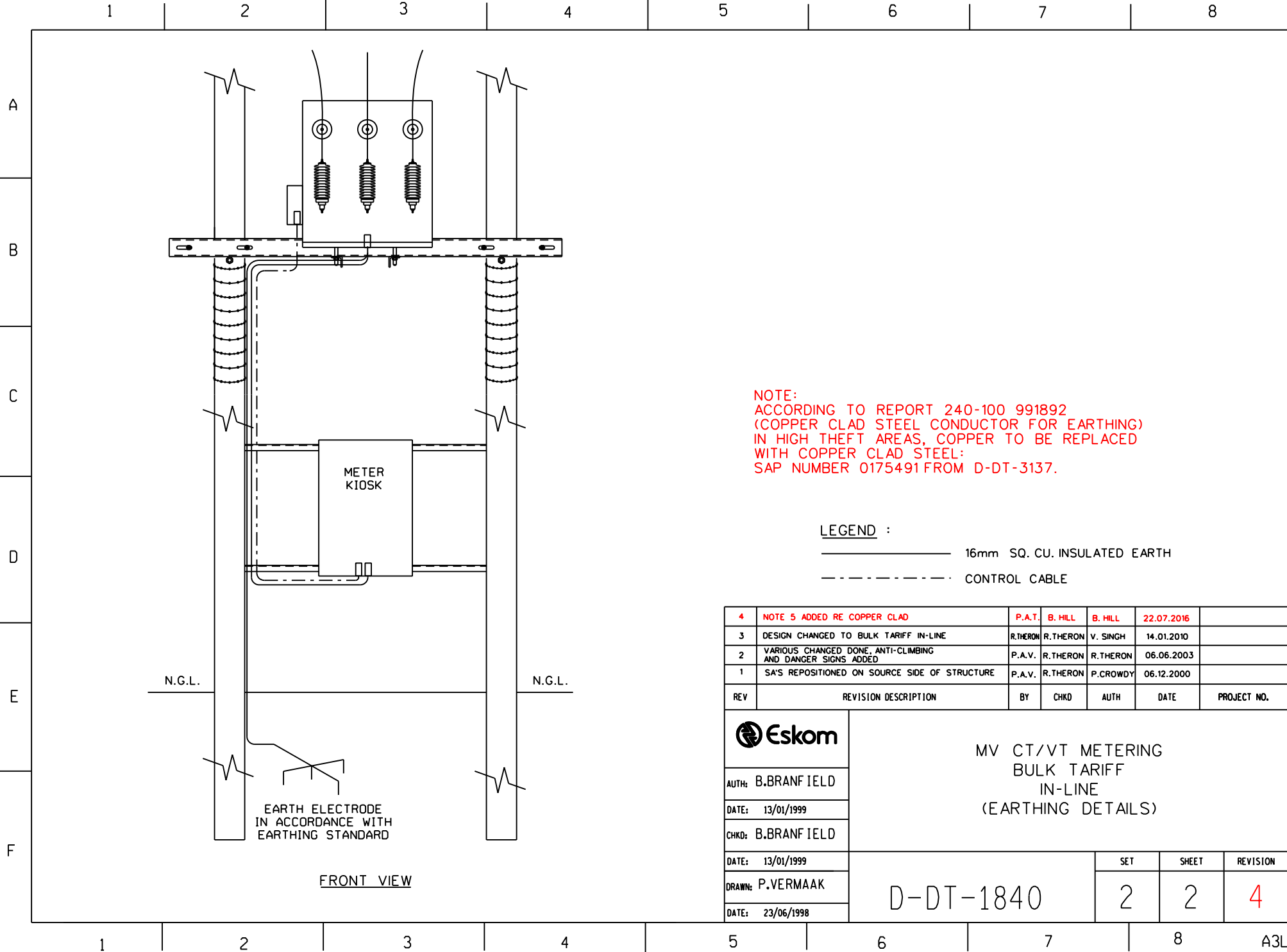


REFERENCE DRAWINGS		
ITEM	DESCRIPTION	DWG NO
STRUCTURES		
1	H-POLE -3.5m CROSSARM, -2x3.5m CROSSARM, -4.5m CROSSARM OR -2x4.5m CROSSARM	D-DT-1763 D-DT-1767 D-DT-1773 D-DT-1777
2	DELTA-STRAIN-TERMINAL -2.5m CROSSARM	D-DT-1746
EQUIPMENT ATTACHMENTS		
3	SECTION LINKS (SINGLE POLE) -2.5m WOOD CROSSARM, -1.3m STEEL CROSSARM, -1.7m STEEL CROSSARM OR -LOAD-BREAK SWITCH	D-DT-1848 D-DT-1850 D-DT-1869 D-DT-1857
4	EQUIPMENT LINKS (H-POLE) -2x2.5M WOOD CROSSARM OR -2.5m STEEL CROSSARM	D-DT-1853 D-DT-1875
5	SURGE ARRESTERS	D-DT-0261
6	EQUIPMENT MOUNTING PLATFORM	D-DT-0271
7	ANTI-CLIMBING DEVICE	D-DT-0399
EQUIPMENT EARTHING		
	-CT/VT METERING UNIT EARTHING	D-DT-1840 (Sheet 2)

- NOTES :
1. EACH BULK TARIFF METERING UNIT SHALL HAVE A DEDICATED AUTO-RECLOSER IN ACCORDANCE WITH SECTION 6 OF THE MV STANDARD.
  2. THE AUTO-RECLOSER STRUCTURE SHALL BE LOCATED AT APPROXIMATELY 10m FROM THE METERING UNIT, ON THE SOURCE SIDE.
  3. THE AUTO-RECLOSER STRUCTURE SHALL BE EITHER IN-LINE (D-DT-1825) OR OUT-OF-LINE (D-DT-1829).
  4. JUMPERS TO BE COVERED IN ACCORDANCE WITH TECHNICAL BULLETIN 01TB027
  5. ACCORDING TO REPORT 240-100 991892 (COPPER CLAD STEEL CONDUCTOR FOR EARTHING) IN HIGH THEFT AREAS, COPPER TO BE REPLACED WITH COPPER CLAD STEEL: SAP NUMBER 0175491 FROM D-DT-3137.

REV	REVISION DESCRIPTION	BY	CHKD	AUTH	DATE	PROJECT NO.
4	NOTE 5 ADDED RE COPPER CLAD	P.A.T.	B. HILL	B. HILL	22.07.2016	
3	DESIGN CHANGED TO BULK TARIFF IN-LINE	R.THERON	R.THERON	V. SINGH	14.01.2010	
2	VARIOUS CHANGED DONE, ANTI-CLIMBING AND DANGER SIGNS ADDED	P.A.V.	R.THERON	R.THERON	06.06.2003	
1	SA'S REPOSITIONED ON SOURCE SIDE OF STRUCTURE	P.A.V.	R.THERON	P.CROWDY	06.12.2000	

	<b>MV CT/VT METERING BULK TARIFF IN-LINE (GENERAL ARRANGEMENT)</b>			
	AUTH: B.BRANFIELD			
	DATE: 13/01/1999			
	CHKD: B.BRANFIELD			
DATE: 13/01/1999				
DRAWN: P.VERMAAK				
DATE: 23/06/1998				
D-DT-1840		SET 2	SHEET 1	REVISION 4



**NOTE:**  
 ACCORDING TO REPORT 240-100 991892  
 (COPPER CLAD STEEL CONDUCTOR FOR EARTHING)  
 IN HIGH THEFT AREAS, COPPER TO BE REPLACED  
 WITH COPPER CLAD STEEL:  
 SAP NUMBER 0175491 FROM D-DT-3137.

**LEGEND :**  
 ————— 16mm SQ. CU. INSULATED EARTH  
 - - - - - CONTROL CABLE

4	NOTE 5 ADDED RE COPPER CLAD	P.A.T.	B. HILL	B. HILL	22.07.2016	
3	DESIGN CHANGED TO BULK TARIFF IN-LINE	R.THERON	R.THERON	V. SINGH	14.01.2010	
2	VARIOUS CHANGED DONE, ANTI-CLIMBING AND DANGER SIGNS ADDED	P.A.V.	R.THERON	R.THERON	06.06.2003	
1	SA'S REPOSITIONED ON SOURCE SIDE OF STRUCTURE	P.A.V.	R.THERON	P.CROWDY	06.12.2000	
REV	REVISION DESCRIPTION	BY	CHKD	AUTH	DATE	PROJECT NO.



AUTH: B.BRANFIELD  
 DATE: 13/01/1999  
 CHKD: B.BRANFIELD  
 DATE: 13/01/1999  
 DRAWN: P.VERMAAK  
 DATE: 23/06/1998

MV CT/VT METERING  
 BULK TARIFF  
 IN-LINE  
 (EARTHING DETAILS)

D-DT-1840

SET	SHEET	REVISION
2	2	4