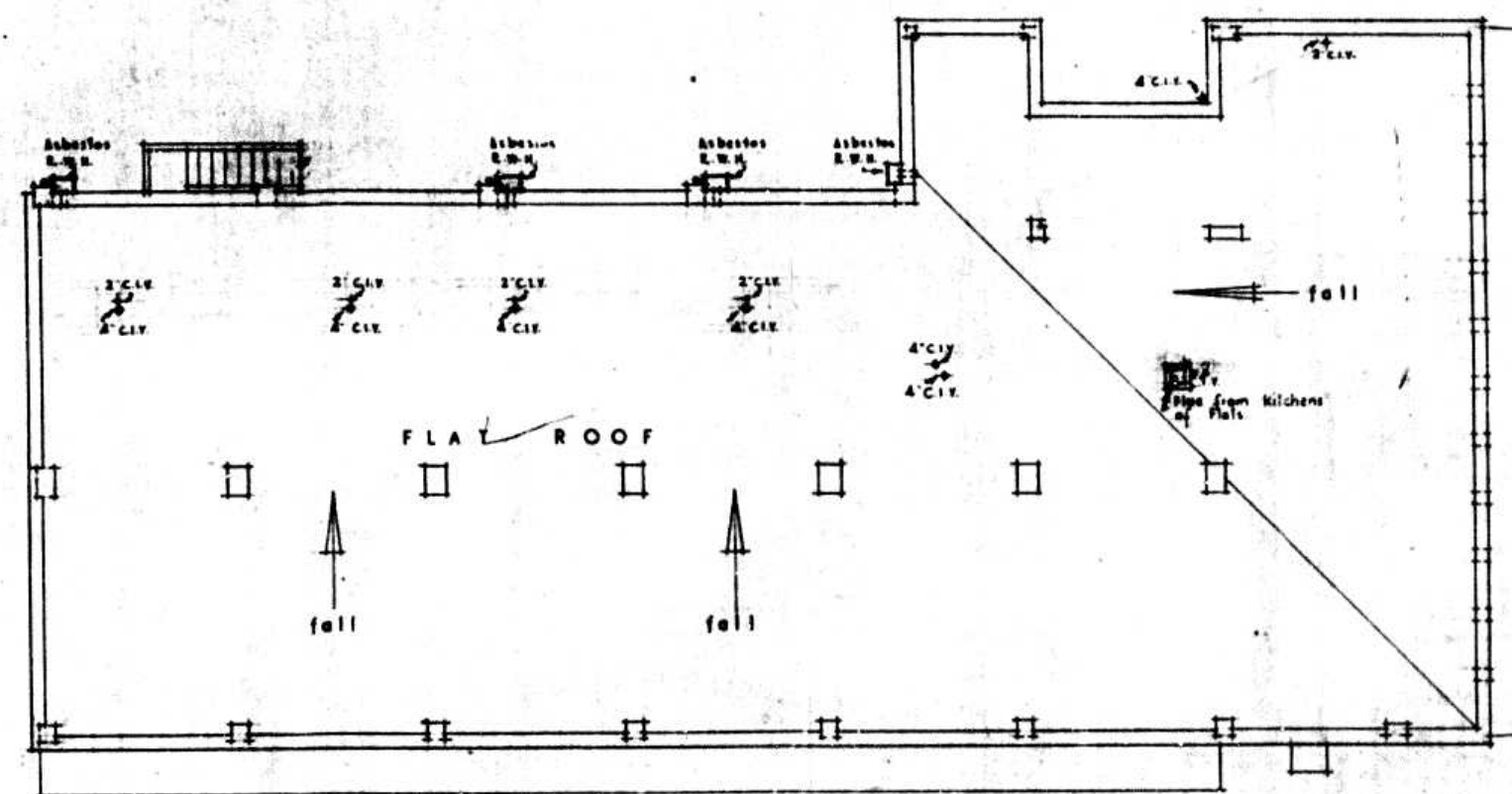
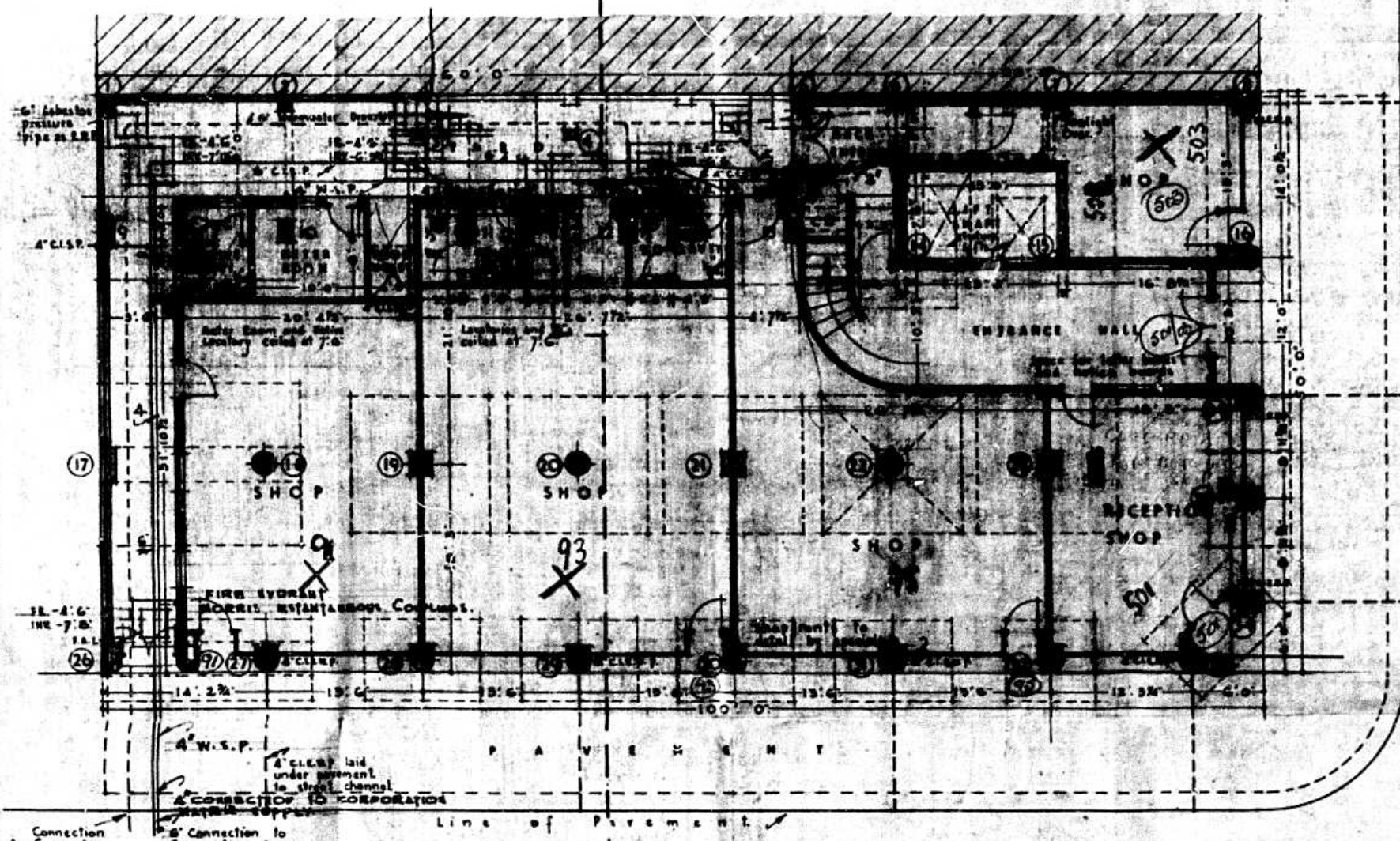


FIRST FLOOR PLAN

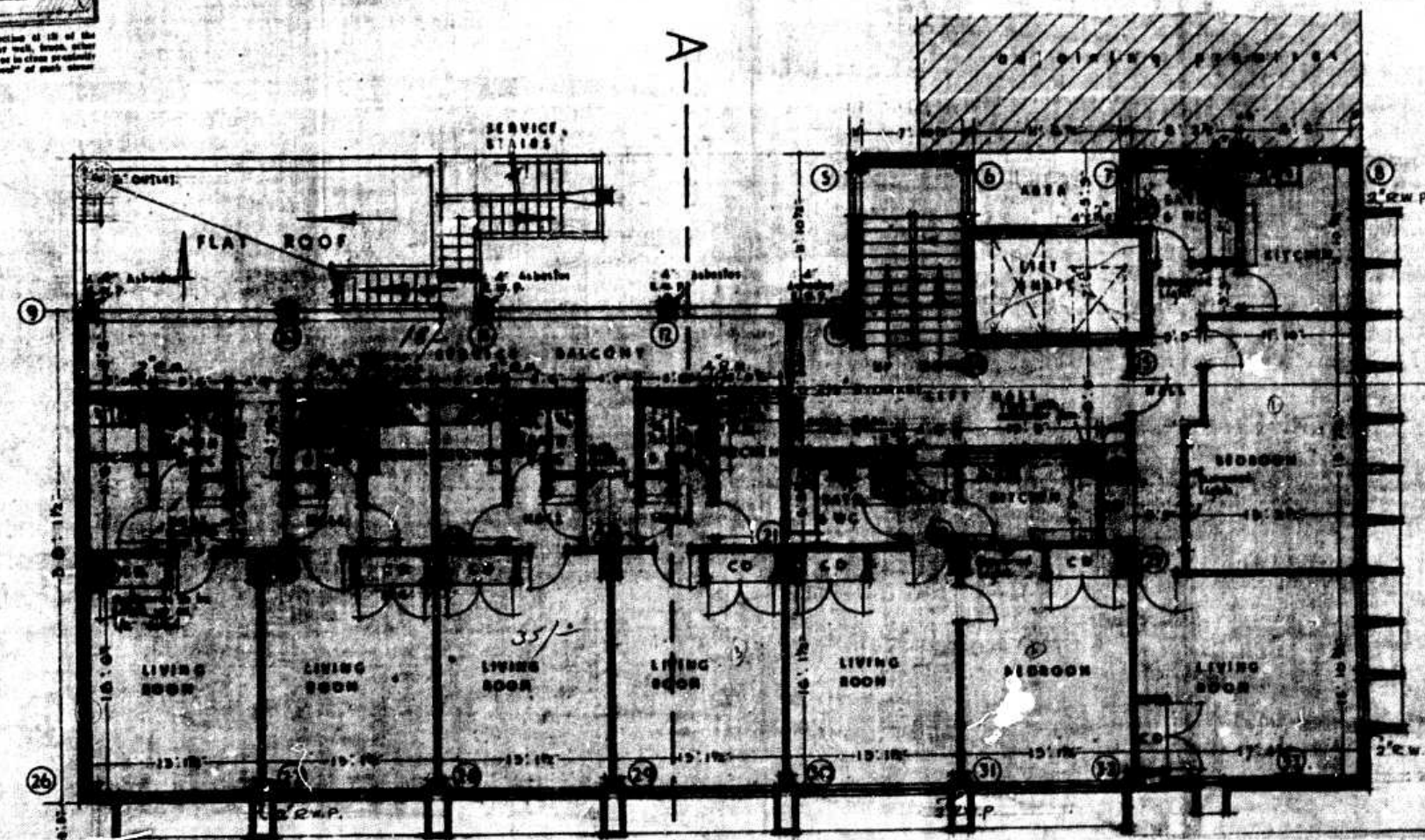


ROOF PLAN

ROOF & DRAINAGE SECTION
 Section of all floor and terrace levels being to comply with existing road works and in same accordance.
 The new levels to continue to that of existing pavement.
 DATE: 23-9-52



GROUND FLOOR PLAN



SECOND FLOOR PLAN

FIRE DEPARTMENT
 Plans Approved
 Date: 23-9-52
 Chief Officer

ALL PLAYS MUST HAVE INDEPENDENT STOPCOCKS. ALL OVERFLOW PIPES FROM CISTERS, CISTERNS AND TANKS MUST BE BROUGHT TO AN OUTSIDE WALL IN A CONSPICUOUS POSITION.

WATER ENGINEERS' DIVISION
 WATER DIVISION
 22 AUG 1952
 Russell
 CONNECTION FROM
 CONNECTION FROM

SCALE
 ONE INCH TO EIGHT FEET
 DRAWING
 I

PROPOSED NEW PREMISES SMITH STREET DURBAN FOR THE BRITISH AND FOREIGN BIBLE SOCIETY

DATE: 23-8-52
 2-19-52
 DURBAN

ARCHITECTS
 Payne & Scott
 A.R.I.B.A. M.I.A./M.L.A.
 CHANCERY LANE
 DURBAN JULY 1952