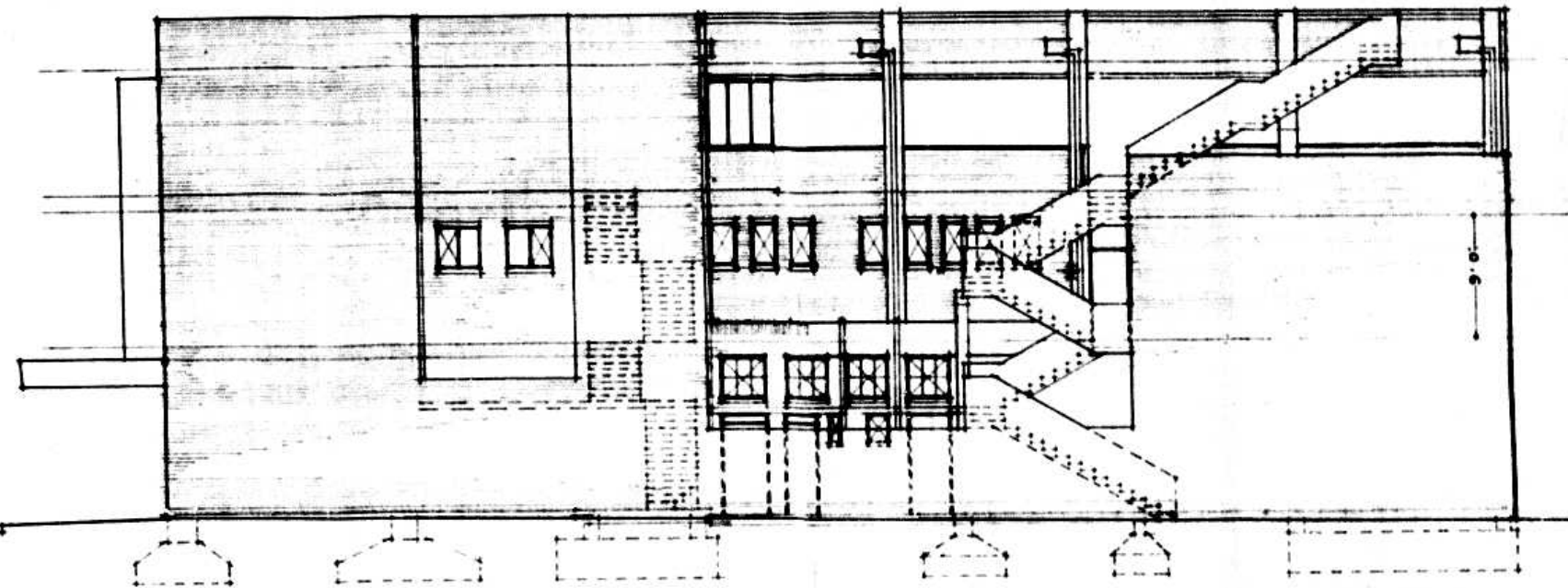
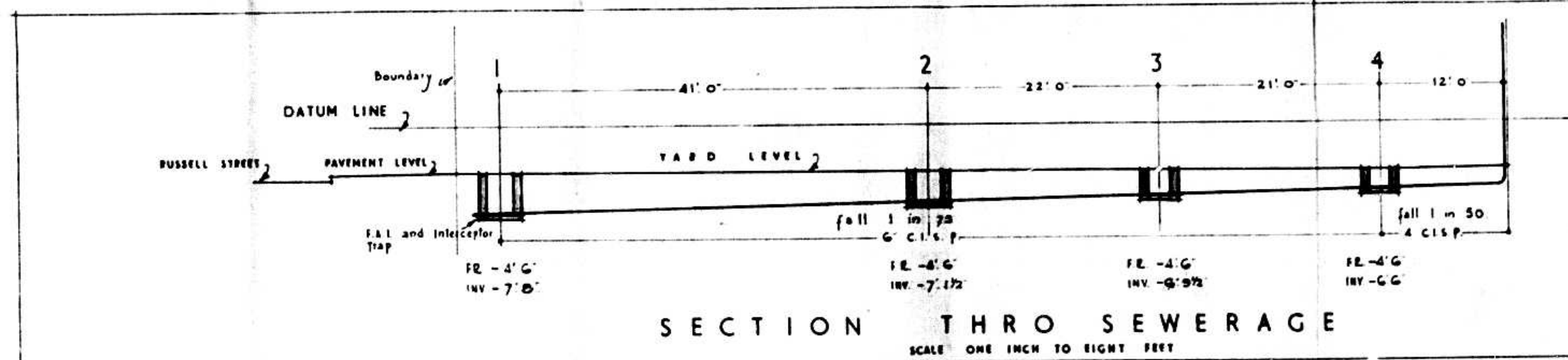


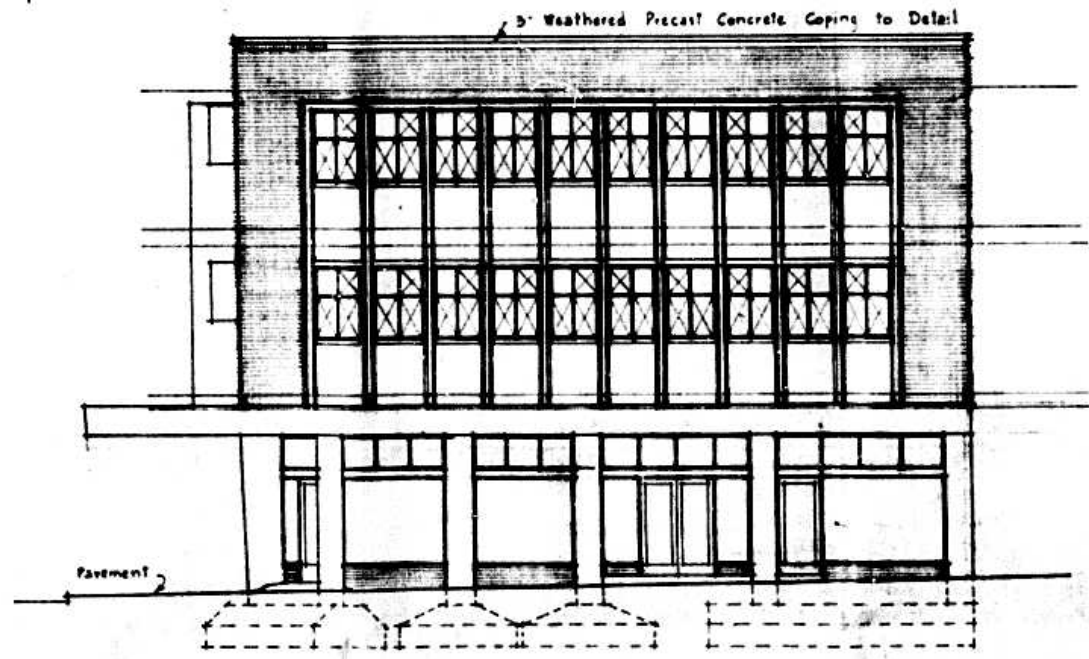
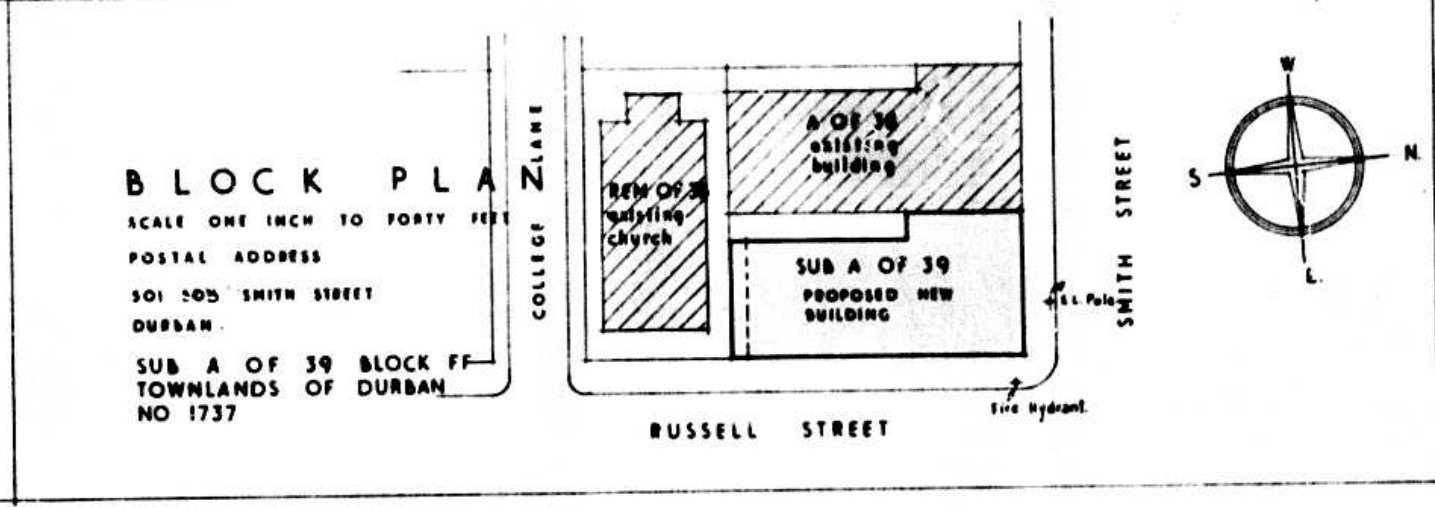
ELEVATION TO RUSSELL STREET



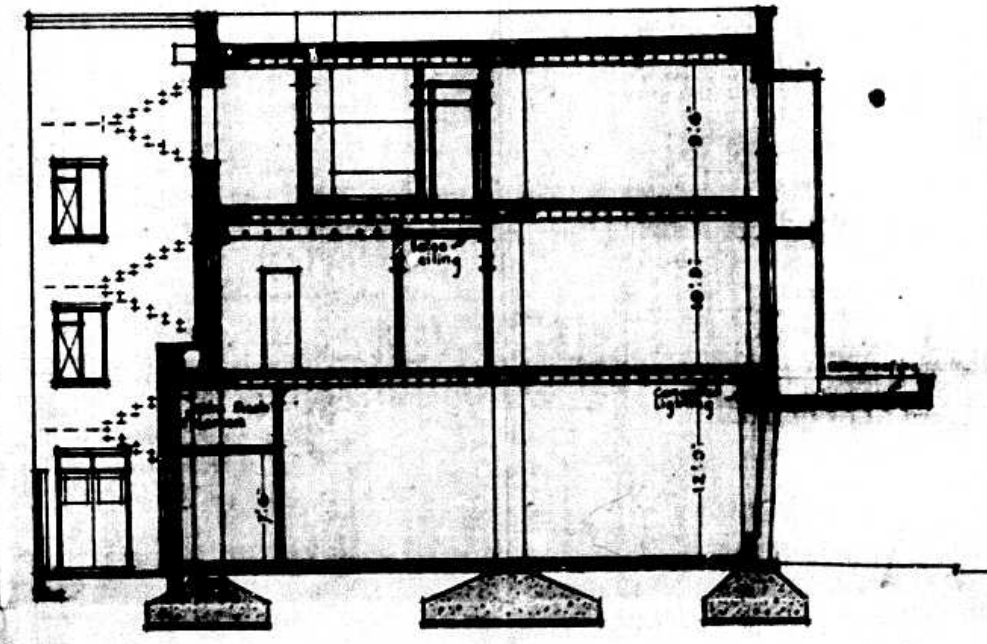
BACK ELEVATION



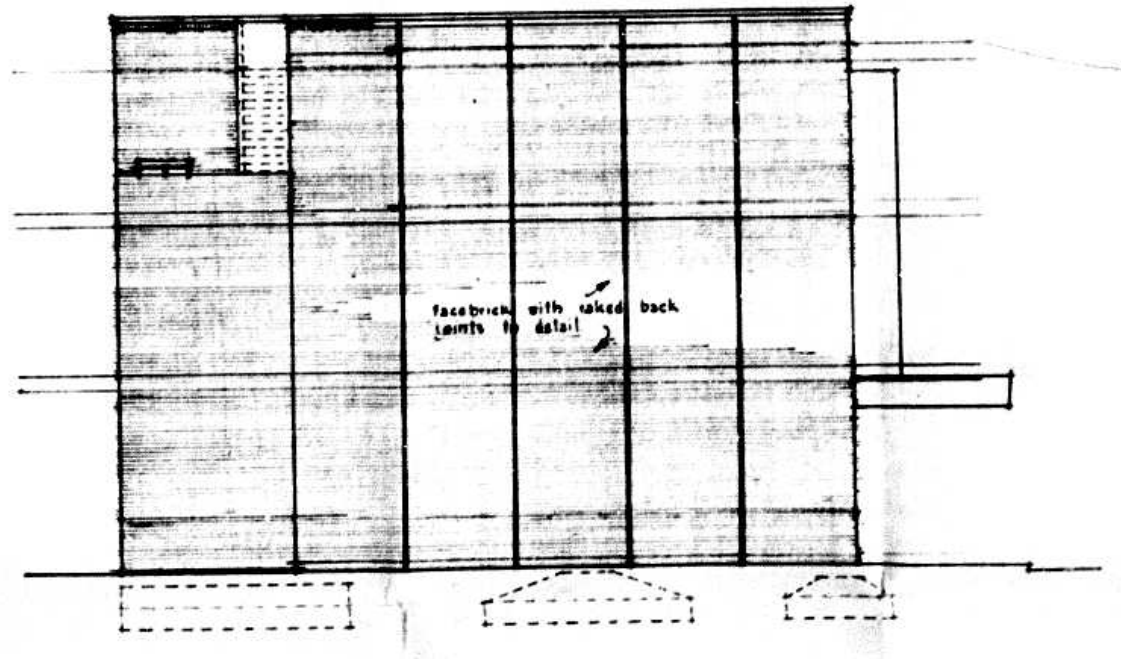
SECTION THRO SEWERAGE  
SCALE ONE INCH TO EIGHT FEET



ELEVATION TO SMITH STREET



SECTION AA



SIDE ELEVATION

FIRE DEPARTMENT  
Plans Approved  
*Albert*  
CHIEF OFFICER  
Date: 23-9-52

CITY AND WATER ENGINEERS  
WATER DIVISION  
22 AUG 1952  
WATER CONNECTION FROM CMR  
Russell  
CONNECTION FEE *Estimate*  
DURBAN

ALL FLATS MUST HAVE INDEPENDENT STOPCOCKS. ALL OVERFLOW PIPES FROM GEYSERS, CISTERNS AND TANKS MUST BE BROUGHT TO AN OUTSIDE WALL IN A CONSPICUOUS POSITION.

REPLACEMENT  
22-8-52  
2-19-52  
DURBAN

SCALE ONE INCH TO EIGHT FEET  
DRAWING 2

PROPOSED NEW PREMISES SMITH STREET DURBAN FOR THE BRITISH AND FOREIGN BIBLE SOCIETY

ARCHITECTS  
*Payne & Peyton*  
A.R.L.S.A. M.I.A./M.I.A.  
CHANCERY LANE