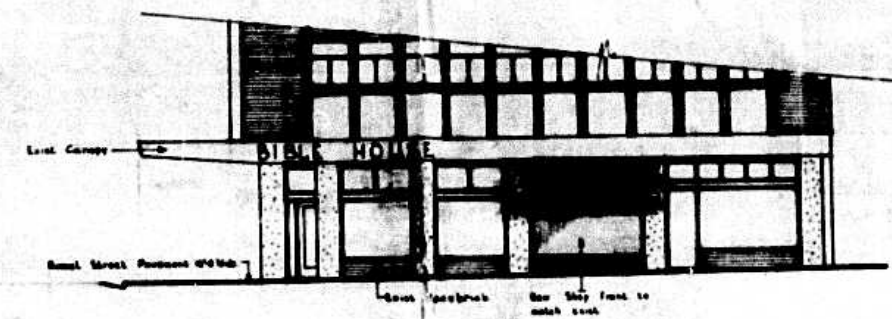


REF. NO. 256/6
SHEET 1/1

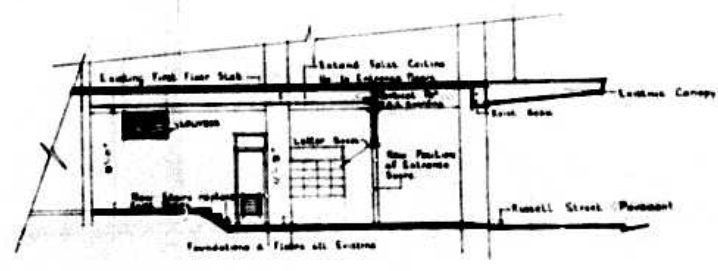
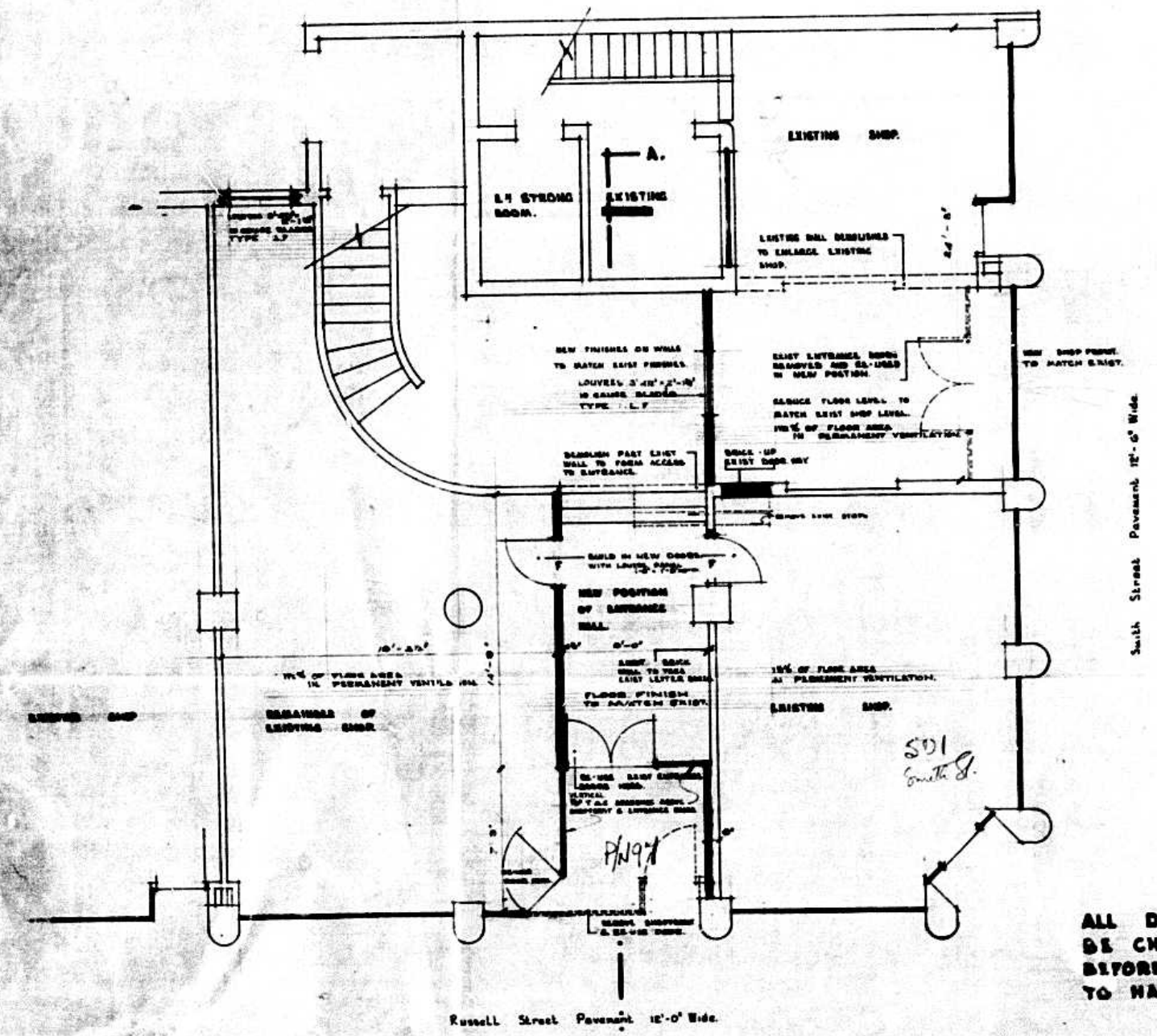
CITY HEALTH DEPT. DURBAN
PLANS SECTION
RECEIVED
20 JUN 1967
APPROVED 28 JUN 1967



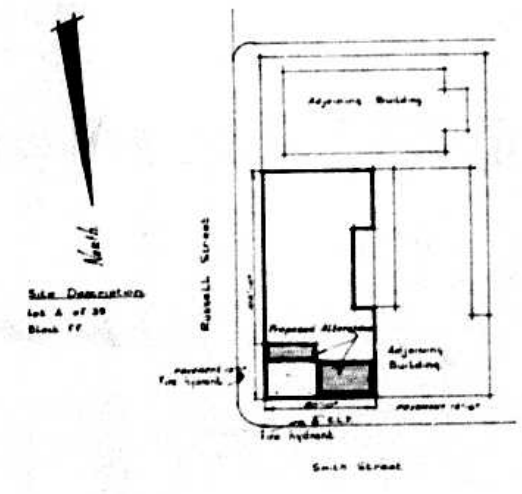
Part Elevation to Russell Street



Part Elevation to Smith Street



Section AA (Part)



Site Plan
Scale 1/4" = 1'-0"

ALL DIMENSIONS TO BE CHECKED ON SITE BEFORE WORK IS PUT TO HAND.

ELFVATIONAL CONTROL
REFERENCE No.
CHECKED BY [Signature]
APPROVED SUBJECT TO -

Proposed Alterations to Bible House 303 Smith Street, Durban.

SCALE A SHEET ARCHITECTS
1115 BRITISH BLDG
SMITH ST DURBAN
PHONE 28000

Scale: 1/4" = 1'-0" 1/8" = 1'-0"

WORKING DIMS: PLAN, ELEVATION, SECTION, SITE PLAN

Date: 7.6.67

DWG. NO. 856/5