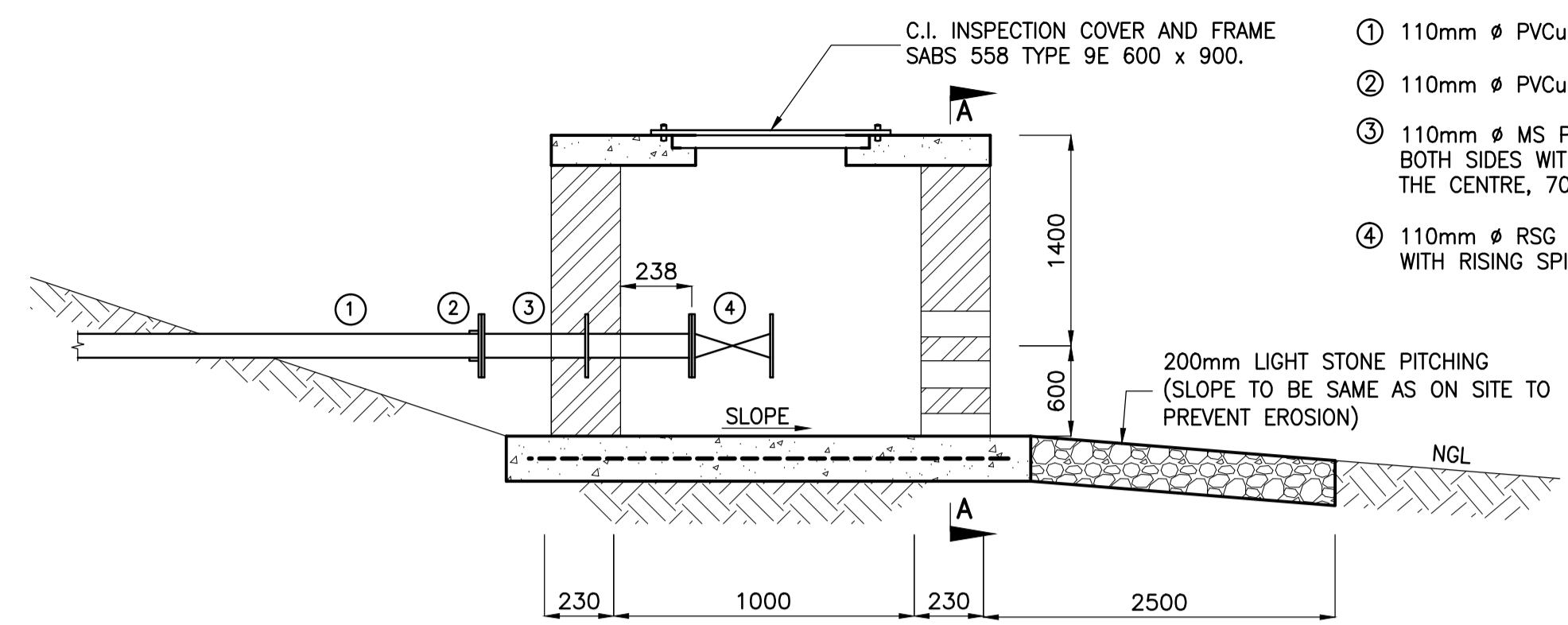
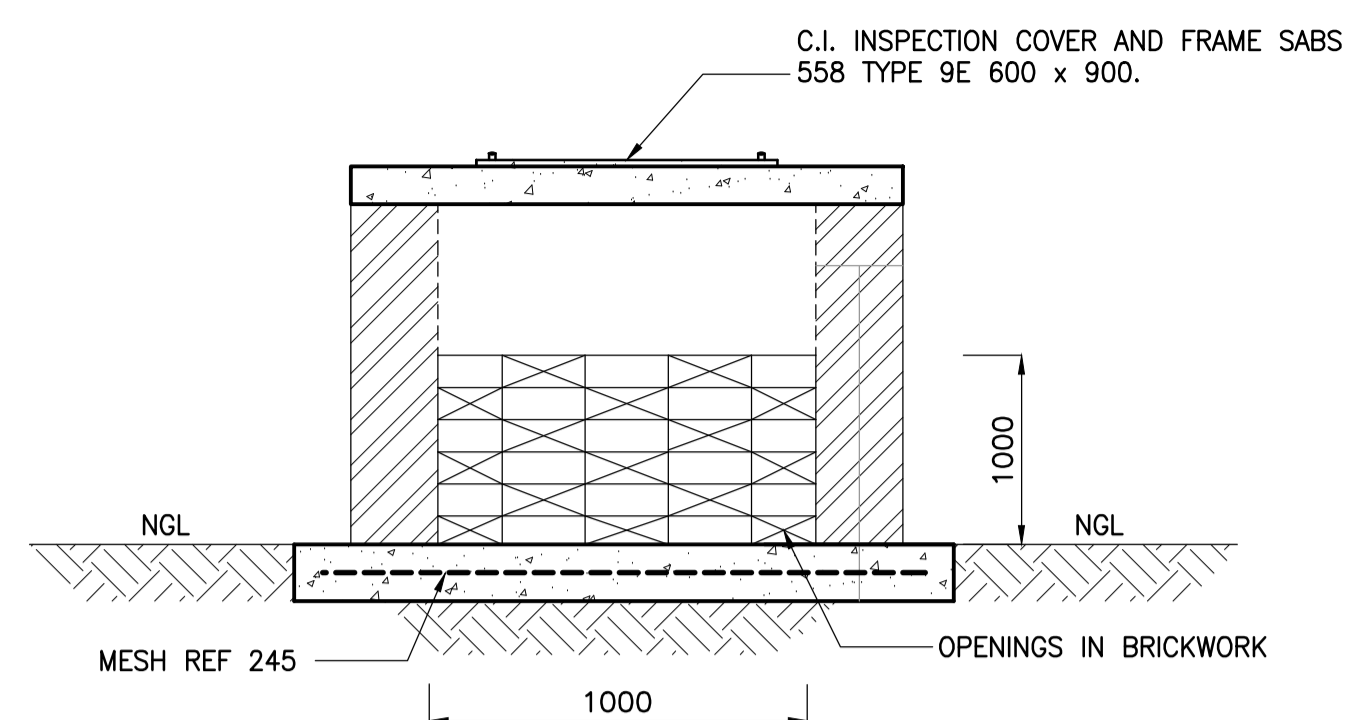


- PIPE SCHEDULE**
- ① 110mm Ø PVCu CLASS 9 PIPE
  - ② 110mm Ø PVCu FLANGE ADAPTOR
  - ③ 110mm Ø MS PUDDLE PIPE, FLANGED BOTH SIDES WITH PUDDLE FLANGED IN THE CENTRE, 700mm LONG
  - ④ 110mm Ø RSG VALVE, FLANGED, WITH RISING SPINDLE AND HAND WHEEL

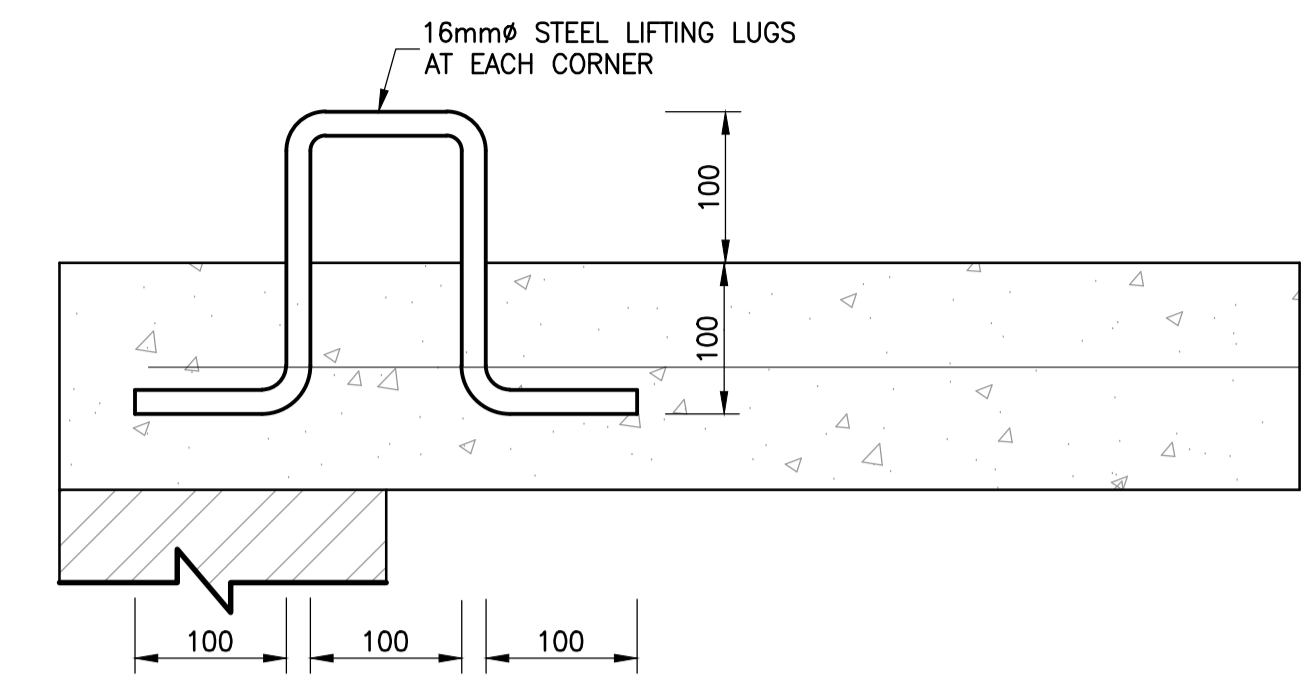


**SCOUR VALVE CHAMBER**  
TYPICAL SECTION  
SCALE 1:20

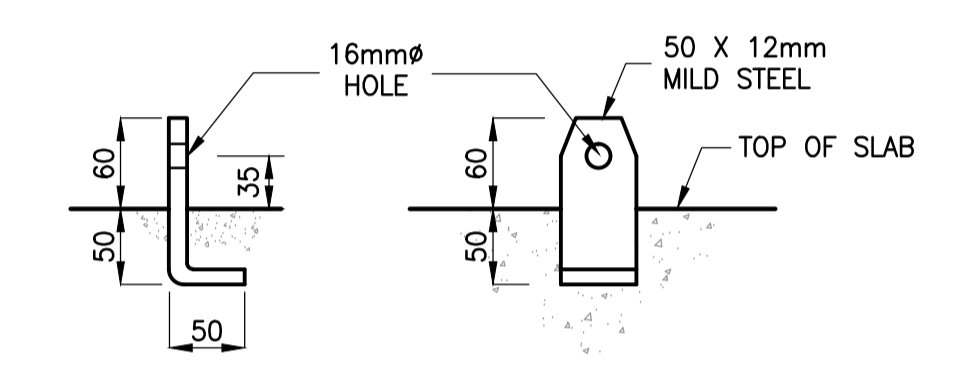


**SECTION A-A**  
SCALE 1:20

- NOTE:**
1. ALL CONCRETE TO BE 25MPa/19mm, UNLESS NOTED OTHERWISE.
  2. FINAL POSITION OF CHAMBER TO BE AGREED WITH THE ENGINEER ON SITE.
  3. ALL PIPEWORK TO BE HOT DIPPED GALVANISED AFTER MANUFACTURE.
  4. BRICKFORCE EVERY COURSE FOR FIRST 6 COURSES.
  5. CONTRACTOR TO CHECK COMBINED LENGTH OF FITTINGS BEFORE CONSTRUCTING THE CHAMBER.
  6. BRICKWORK MUST NOT BE PLASTERED, ENGINEERING BRICKS TO BE USED. BRICKS TO BE IN ACCORDANCE WITH SABS 0164.
  7. ALL STEELWORK TO BE HOT DIPPED GALVANIZED AFTER MANUFACTURE (SABS 763: HOT DIP (GALVANIZE) ZINC COATING).

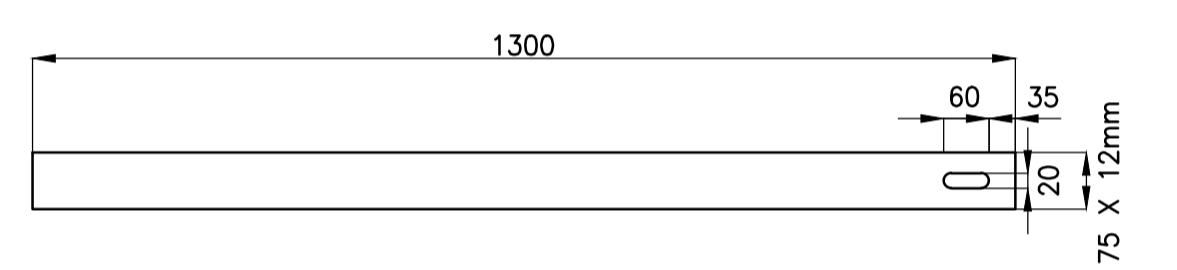


**LIFTING LUGS**  
SCALE 1:5

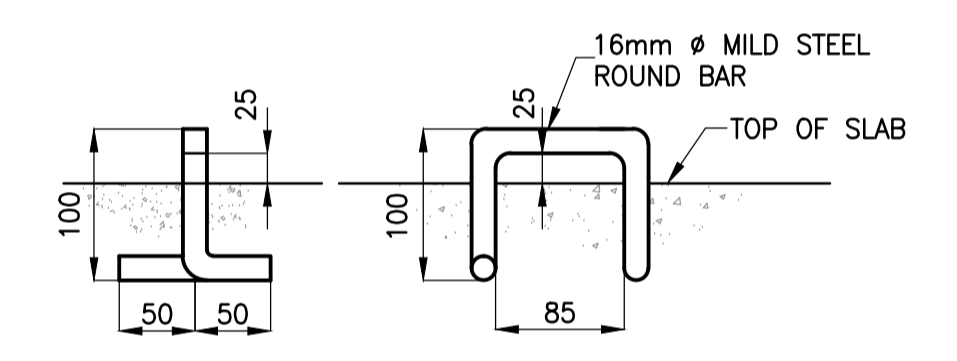


**DETAIL 1**  
SCALE 1:5

**NOTE:**  
ALL STEELWORK TO BE HOT DIPPED GALVANIZED AFTER MANUFACTURE (SABS 763: HOT DIP (GALVANIZE) ZINC COATING).

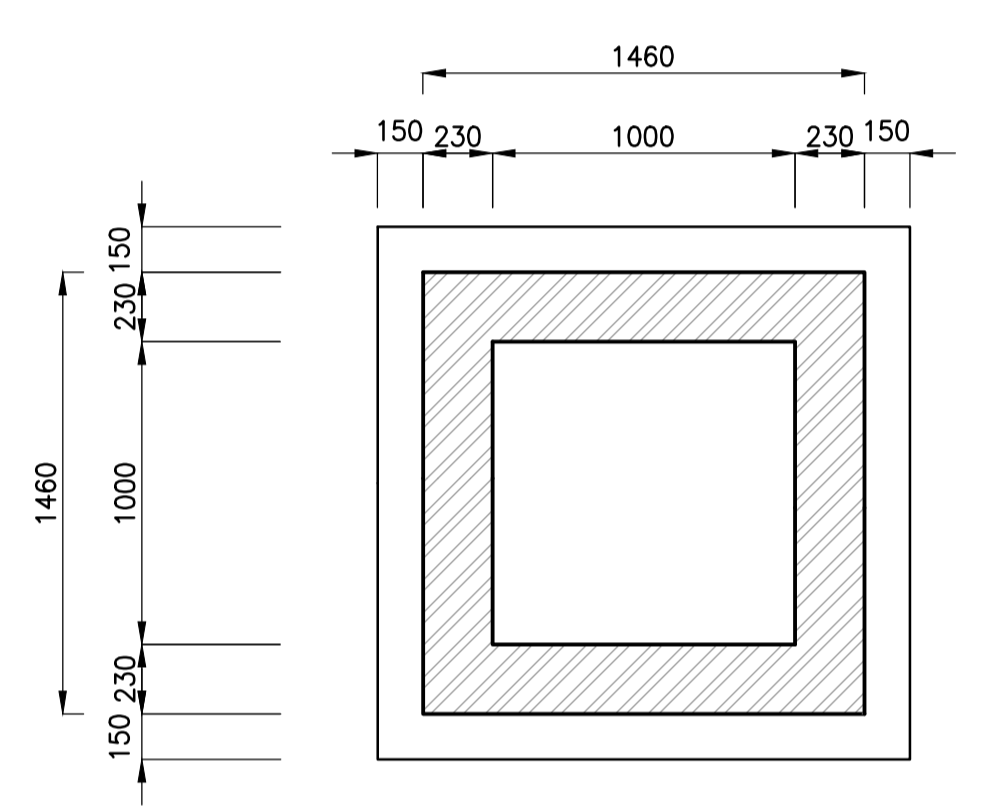


**MILD STEEL LOCKING BAR**  
SCALE 1:10

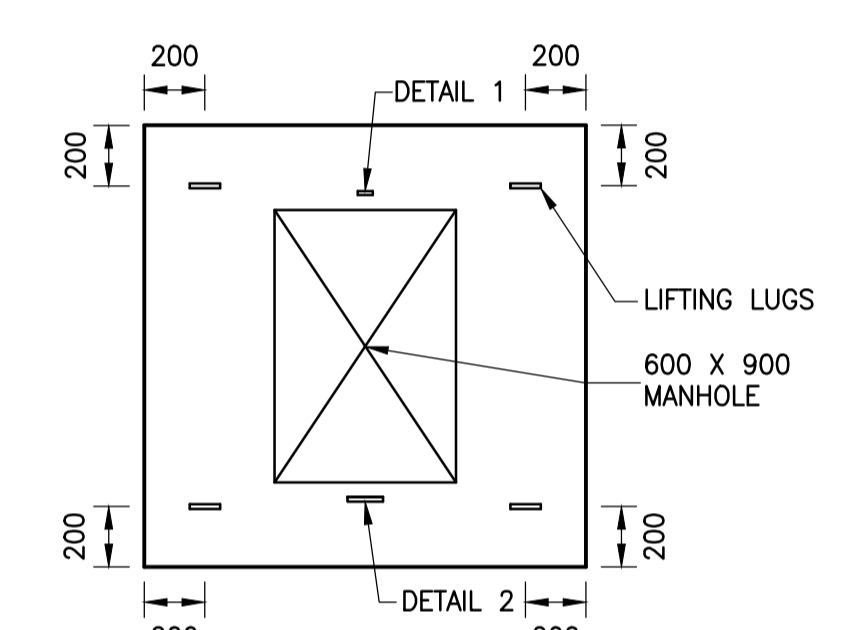


**DETAIL 2**  
SCALE 1:5

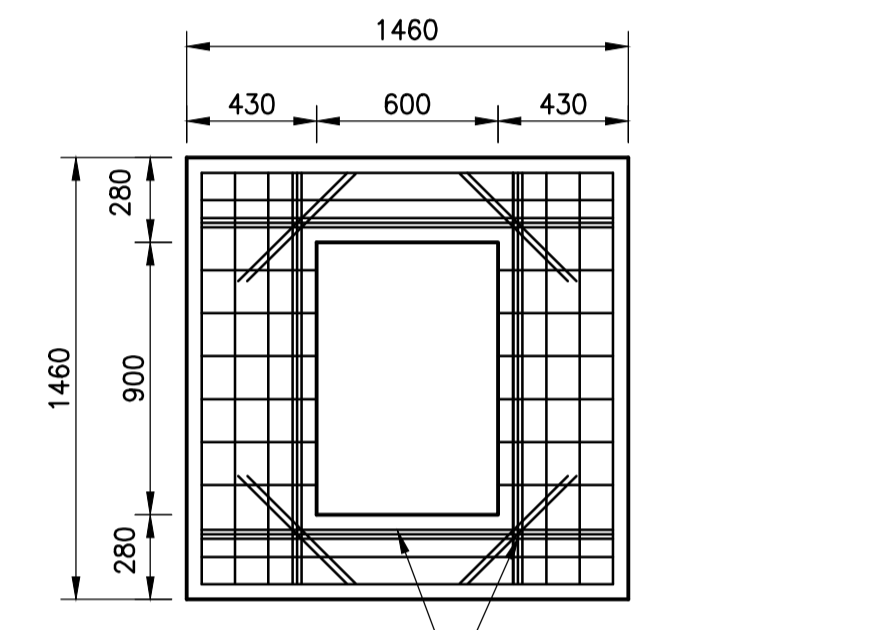
**LOCKING BAR DETAILS**



**TYPICAL FLOOR PLAN OF SCOUR VALVE CHAMBER**  
SCALE 1:25

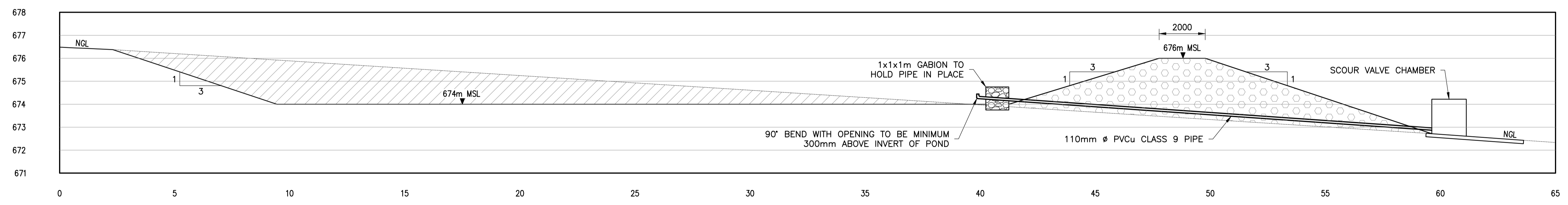


**ROOF PLAN**  
SCALE 1:25



- NOTE:**
1. CONCRETE STRENGTH 25MPa/19mm
  2. COVER TO REINFORCEMENT 50mm (FROM SOFFIT OF SLAB)
  3. REINFORCEMENT = Y12 @ 150 c/c (SLABS OUTSIDE ROADWAYS)
  4. SLAB THICKNESS 150mm
  5. FINISHING: - WOOD FLOAT FINISH UNLESS NOTED OTHERWISE.

**ROOF SLAB REINFORCEMENT**  
SCALE 1:25



**SECTION A-A**  
SCALE 1:100

- LEGEND:**
- CUT (1 929 m<sup>3</sup>)
  - FILL (1 678 m<sup>3</sup>)
- NOTES:**
1. ALL SLOPES TO BE 1V:3H.
  2. POND WALL TO BE CONSTRUCTED IN LAYERS 300mm THICK WITH SELECTED EXCAVATED MATERIAL (CLAY) COMPACTED TO 98% PROCTOR MAXIMUM DRY DENSITY.

DO NOT SCALE

REV	DR	CH	DATE	REVISIONS	REFERENCE DRAWINGS	NOTES
0	BRAD	MEIR	26-05-2016	ISSUED FOR CONSTRUCTION	501573 - 100 LAYOUT AND SETTING-OUT DETAILS	

**srk consulting**

BAY SUITES  
1A HURWOOD ROAD  
HUMERAL  
6001 PORT ELIZABETH

PO BOX 21842  
PORT ELIZABETH  
6000 SOUTH AFRICA

e-Mail: portelizabeth@srk.co.za  
www.srk.co.za

Tel: +27 (0) 41 509 4800  
Fax: +27 (0) 41 509 4850

**CESA**  
Consulting Engineers South Africa

**TITLE**  
EVAPORATION PONDS  
TERTIARY POND  
SECTIONS AND DETAILS

**CLIENT**  
GRANOR PASSI

**FOR CONSTRUCTION**

REGISTERED ENGINEER APPROVAL  
NAME: MU MEIRING NUMBER: 200870000

DESIGNED	DATE	CHECKED
BRAD	05-04-2016	MEIR
BRAD	05-04-2016	MEIR

**A1** SCALE: AS SHOWN

PROJECT No.	SBU	DISP	DRG No.	SHT	REV
501573	344	01	1102	010	