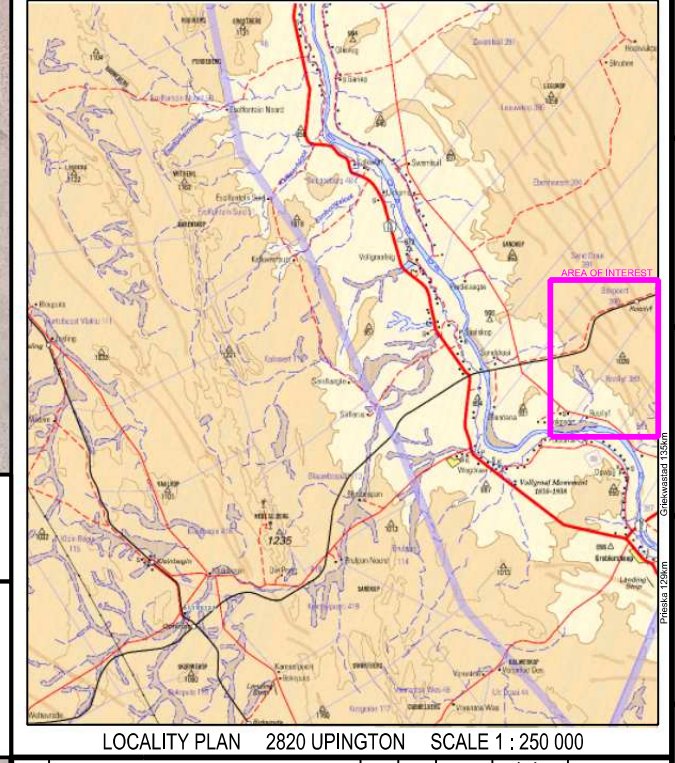


| FUSES          | MINK          | TRFR               | MINK                          |
|----------------|---------------|--------------------|-------------------------------|
| MINK 10.926 km | MINK 0.027 km | ESKOM TRANSMISSION | KGH290-25-35-106              |
| MINK 0.007 km  | MINK 0.293 km |                    | KGH290-25-35-102              |
| MINK 0.207 km  | MINK 1.392 km |                    | BOKPOORT 21358                |
| MINK 1.018 km  | MINK 1.628 km |                    | KGH290-25-35-88               |
| MINK 0.110 km  | MINK 1.413 km |                    | EBENAESER BOKPOORT 21272      |
|                | MINK 1.660 km |                    | KGH290-25-35-72               |
|                | MINK 0.499 km |                    | KGH290-25-35-17               |
|                | MINK 0.242 km |                    | SANDRAAL PERS 391             |
|                | MINK 0.182 km |                    | KGH290-25-35-45               |
|                |               |                    | BOKPOORT GED 5                |
|                |               |                    | KGH290-25-35-47               |
|                |               |                    | 21058 BOKP-GLENDANA           |
|                |               |                    | KGH290-25-35-45               |
|                |               |                    | BOKPOORT GED 2 PM NOTZE 21052 |
|                |               |                    | KGH290-25-35-11-15            |
|                |               |                    | KGH290-25-35-11-25            |
|                |               |                    | KGH290-25-35-11-24-7          |
|                |               |                    | KGH290-25-35-11-24-10         |
|                |               |                    | KGH290-25-35-11-15            |
|                |               |                    | KGH290-25-35-11-15            |
|                |               |                    | KGH290-25-35-11-15            |

**ENS IS ONLY A PROPOSED DIAGRAM AND SHOULD NOT BE USED TO FINALISE ENS & FUSE POSITION BEFORE COMMISSIONING.**

KLEINBEGIN GROBLERSHOOP 22kV - PAGE 3 OF 15 [Rev. 7]



LOCALITY PLAN 2820 UPINGTON SCALE 1 : 250 000

**COPY OF APPROVED PLAN**

| LEGEND |                                   |
|--------|-----------------------------------|
|        | PROPOSED 22kV CONTINGENCY SUPPLY  |
|        | EXISTING 22kV OVERHEAD POWERLINE  |
|        | EXISTING 275kV OVERHEAD POWERLINE |
|        | PROPOSED 400kV OVERHEAD POWERLINE |

|  |   |                          |                         |
|--|---|--------------------------|-------------------------|
|  | <b>GROBLERSHOOP CNC</b><br><b>ESKOM TRANSMISSION</b><br>PROJECT ID No. 50234664<br>GARONA 22kV CONTINGENCY SUPPLY<br>MINK CONDUCTOR [± 10,926 KM] |                          |                         |
|  | AUTH: B. VAN GEEMS<br>DATE: 14/01/2013<br>CHD: A. COERECIJS<br>DATE: 14/01/2013<br>DRAWN: K. MARSBURG<br>DATE: 09/01/2013                         | SET<br><b>S-WC-11956</b> | SHEET<br><b>02 00 0</b> |

**LAND DEVELOPMENT SECTION**  
 TEL 021-980 3129 FAX 021-980 3053

