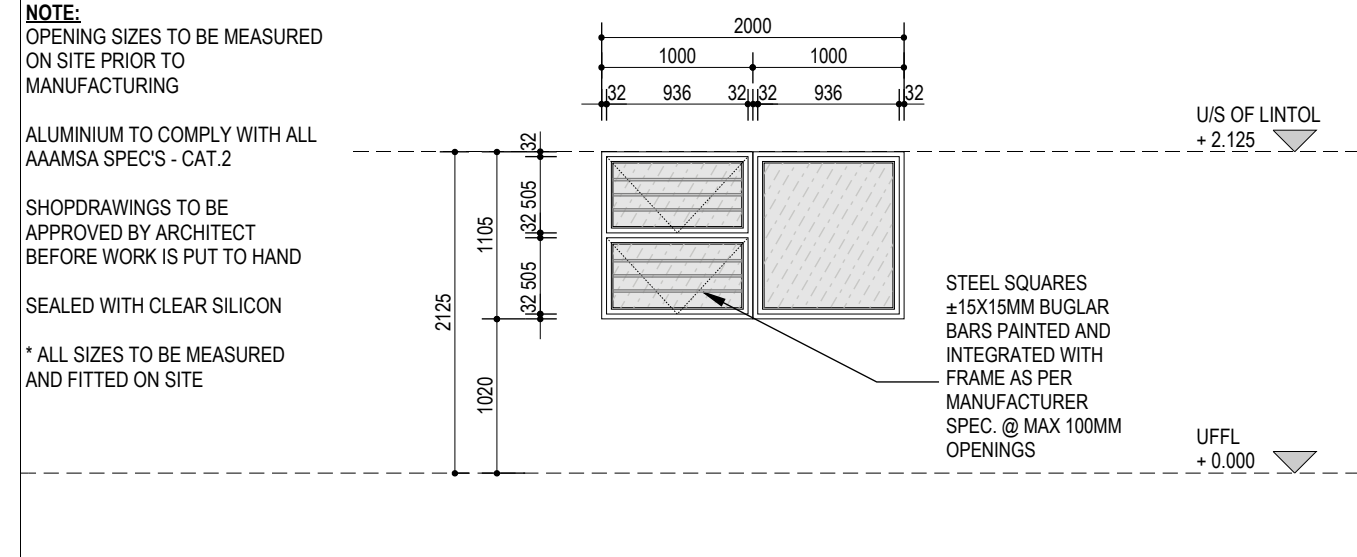


**SANPARKS HOSTELS
MAPUNGUBWE**

JEREMIE MALAN ARCHITECTS
273 Tram Street, New Muckleneuk, Pretoria
P.O. Box 2396
Brooklyn Square 0075
Tel: 012 460 5388
Fax: 012 346 7447
malanar@mwa.co.za
www.malanarchitects.co.za
25°46'22.609"S 28°13'43.33"E
SACAP Reg. no. 3590



WINDOW SCHEDULE



WINDOW No	W14	WALL TYPE- EXTERNAL WALL- FACEBRICK BAG WASHED AND PLASTERED 20MM WALL	INTERNAL SILL: FLOOR TILE CUT TO SIZE EXTERNAL SILL: FACEBRICK ON EDGE
LOCATION	DINING BLOCK _ KITCHEN,FOYER,TOILET AND GENERAL STORE		
WINDOW & FRAME	FRAME TO BE SEALED WITH CLEAR SILICON SEALANT BOTH SIDES OF FRAME THROUGHOUT		
GLAZING	GSA SmartGlass™ 6.38mm Advantage Grey® E Range Solar E laminated safety glass, complying with SANS 1263 Part 1, 2 or 3 with name of the manufacturer permanently marked on each sheet visible after glazing, glazed in accordance with NBR N schedule 1 and SABS 0137.		
WINDOW/FRAME FINISHES	Aluminium window, able to withstand wind pressures of 1500Pa in accordance with SANS 613 with surfaces to receive 60-80µm powdercoating (for architectural applications), applied by a certified markholder of SANS 1578 and SANS 1796, glazing shall be executed strictly in conformance with glass manufacturer's recommendations and all in accordance with the National Building Regulations Parts B.N. T, SANS 10137, SANS 10400 and SANS 1263, plugged and screwed to brickwork or concrete. Colour: Interpon 'ANTHRACITE GREY' Matt, code: ITC 37016		
IRONMONGERY	HANDLE BY CONTRACTOR TO APPROVAL BY CLIENT RESTRICTED STAYS(GROUND FLOOR ONLY) AND TO BE SUPPLIED BY CONTRACTOR SUBJECT TO APPROVAL STD CASEMENT FASTENERS SCREWED TO FRAME ALL AS SUPPLIED WITH WINDOW FRAME		
GENERAL	SHOPCOAT TO BE TOUCHED UP OPENING SECTION TO HAVE TWO BRUSHSEALS, ONE ON EITHER SIDE OF OPENING SECTION TWO CASEMENT FASTNERS PER SASH AND FRICTION STAYS TO BE HEAVY DUTY		

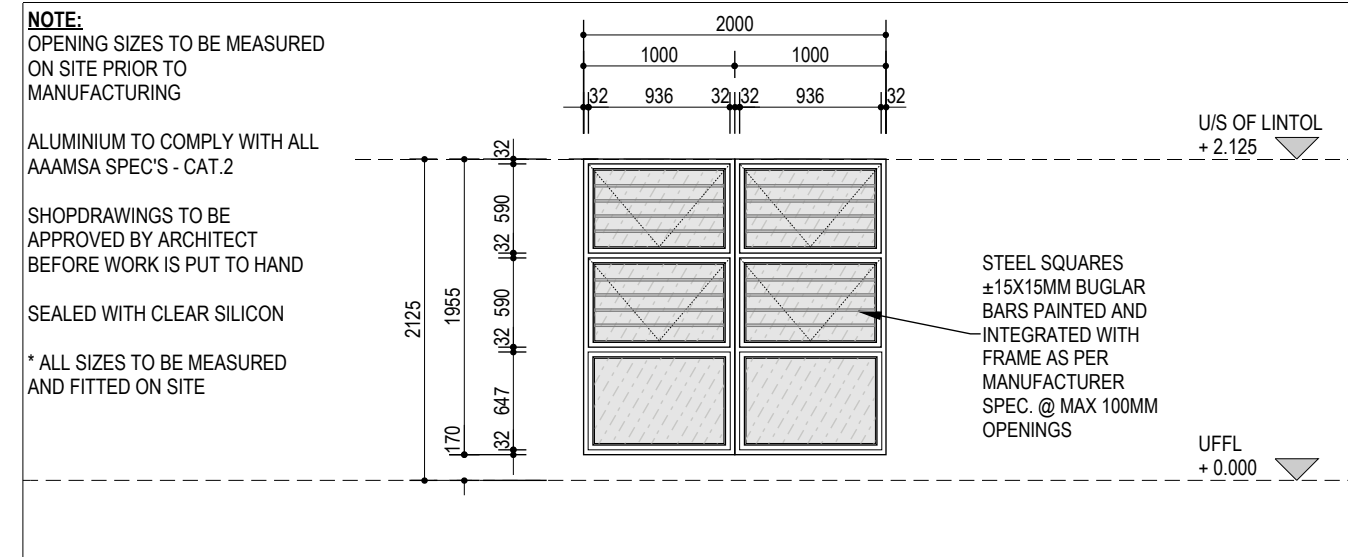
DATE	REV	COMMENTS	DWG. NUMBER	REV.
2015-08-24	A	ISSUE TO CLIENT	512.1	A
			DRAWN BY: SN_2015-08-24	CHECKED BY: JMA
			SCALE: 1:50	
			JOB NO. 521_SANPARKS MAPUNGUBWE	

**SANPARKS HOSTELS
MAPUNGUBWE**

JEREMIE MALAN ARCHITECTS
273 Tram Street, New Muckleneuk, Pretoria
P.O. Box 2396
Brooklyn Square 0075
Tel: 012 460 5388
Fax: 012 346 7447
malanar@mwa.co.za
www.malanarchitects.co.za
25°46'22.609"S 28°13'43.33"E
SACAP Reg. no. 3590



WINDOW SCHEDULE

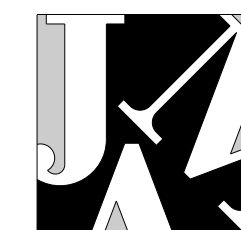


WINDOW No	W15	WALL TYPE- EXTERNAL WALL- FACEBRICK BAG WASHED AND PLASTERED 20MM WALL	INTERNAL SILL: FLOOR TILE CUT TO SIZE EXTERNAL SILL: FACEBRICK ON EDGE
LOCATION	DINING BLOCK _ DINING AREA		
WINDOW & FRAME	FRAME TO BE SEALED WITH CLEAR SILICON SEALANT BOTH SIDES OF FRAME THROUGHOUT		
GLAZING	GSA SmartGlass™ 6.38mm Advantage Grey® E Range Solar E laminated safety glass, complying with SANS 1263 Part 1, 2 or 3 with name of the manufacturer permanently marked on each sheet visible after glazing, glazed in accordance with NBR N schedule 1 and SABS 0137.		
WINDOW/FRAME FINISHES	Aluminium window, able to withstand wind pressures of 1500Pa in accordance with SANS 613 with surfaces to receive 60-80µm powdercoating (for architectural applications), applied by a certified markholder of SANS 1578 and SANS 1796, glazing shall be executed strictly in conformance with glass manufacturer's recommendations and all in accordance with the National Building Regulations Parts B.N. T, SANS 10137, SANS 10400 and SANS 1263, plugged and screwed to brickwork or concrete. Colour: Interpon 'ANTHRACITE GREY' Matt, code: ITC 37016		
IRONMONGERY	HANDLE BY CONTRACTOR TO APPROVAL BY CLIENT RESTRICTED STAYS(GROUND FLOOR ONLY) AND TO BE SUPPLIED BY CONTRACTOR SUBJECT TO APPROVAL STD CASEMENT FASTENERS SCREWED TO FRAME ALL AS SUPPLIED WITH WINDOW FRAME		
GENERAL	SHOPCOAT TO BE TOUCHED UP OPENING SECTION TO HAVE TWO BRUSHSEALS, ONE ON EITHER SIDE OF OPENING SECTION TWO CASEMENT FASTNERS PER SASH AND FRICTION STAYS TO BE HEAVY DUTY		

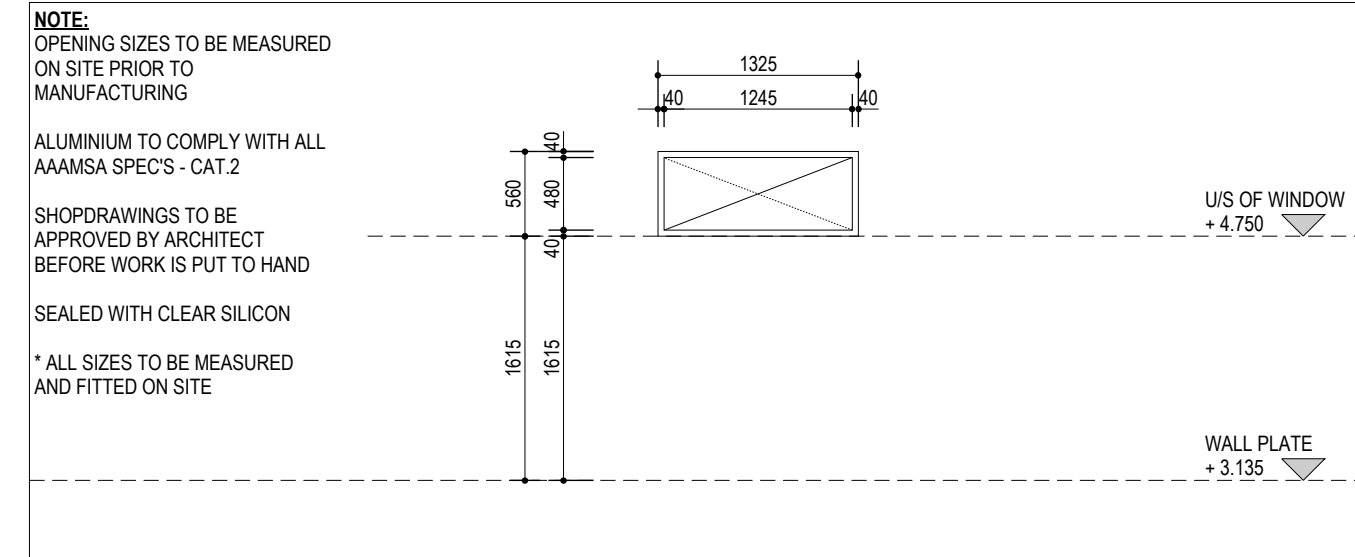
DATE	REV	COMMENTS	DWG. NUMBER	REV.
2015-08-24	A	ISSUE TO CLIENT	512.2	A
			DRAWN BY: SN_2015-08-24	CHECKED BY: JMA
			SCALE: 1:50	
			JOB NO. 521_SANPARKS MAPUNGUBWE	

**SANPARKS HOSTELS
MAPUNGUBWE**

JEREMIE MALAN ARCHITECTS
273 Tram Street, New Muckleneuk, Pretoria
P.O. Box 2396
Brooklyn Square 0075
Tel: 012 460 5388
Fax: 012 346 7447
malanar@mwa.co.za
www.malanarchitects.co.za
25°46'22.609"S 28°13'43.33"E
SACAP Reg. no. 3590



WINDOW SCHEDULE



WINDOW No	W16	WALL TYPE- EXTERNAL WALL- ROOF TRUSS	INTERNAL SILL: FLOOR TILE CUT TO SIZE EXTERNAL SILL: FACEBRICK ON EDGE
LOCATION	DINING BLOCK _ ROOF SOLID ALUMINIUM PANEL		
WINDOW & FRAME	FRAME TO BE SEALED WITH CLEAR SILICON SEALANT BOTH SIDES OF FRAME THROUGHOUT		
GLAZING	NONE		
WINDOW/FRAME FINISHES	Aluminium window, able to withstand wind pressures of 1500Pa in accordance with SANS 613 with surfaces to receive 60-80µm powdercoating (for architectural applications), applied by a certified markholder of SANS 1578 and SANS 1796, glazing shall be executed strictly in conformance with glass manufacturer's recommendations and all in accordance with the National Building Regulations Parts B.N. T, SANS 10137, SANS 10400 and SANS 1263, plugged and screwed to brickwork or concrete. Colour: Interpon 'ANTHRACITE GREY' Matt, code: ITC 37016		
IRONMONGERY	NONE		
GENERAL	SHOPCOAT TO BE TOUCHED UP OPENING SECTION TO HAVE TWO BRUSHSEALS, ONE ON EITHER SIDE OF OPENING SECTION TWO CASEMENT FASTNERS PER SASH AND FRICTION STAYS TO BE HEAVY DUTY		

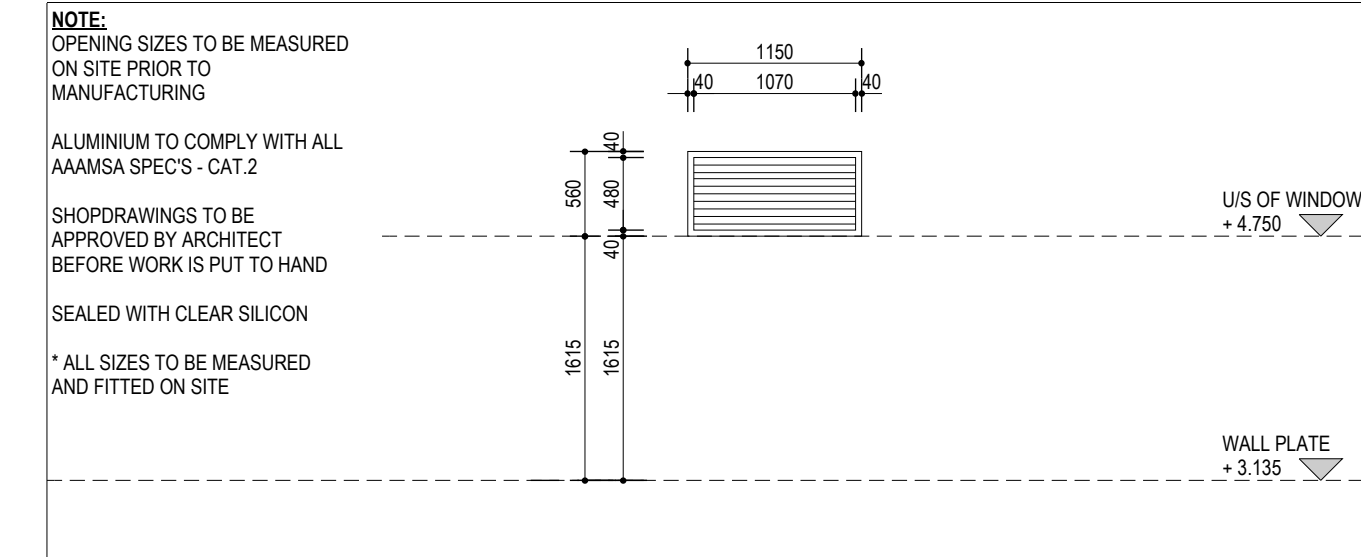
DATE	REV	COMMENTS	DWG. NUMBER	REV.
2015-08-24	A	ISSUE TO CLIENT	512.3	A
			DRAWN BY: SN_2015-08-24	CHECKED BY: JMA
			SCALE: 1:50	
			JOB NO. 521_SANPARKS MAPUNGUBWE	

**SANPARKS HOSTELS
MAPUNGUBWE**

JEREMIE MALAN ARCHITECTS
273 Tram Street, New Muckleneuk, Pretoria
P.O. Box 2396
Brooklyn Square 0075
Tel: 012 460 5388
Fax: 012 346 7447
malanar@mwa.co.za
www.malanarchitects.co.za
25°46'22.609"S 28°13'43.33"E
SACAP Reg. no. 3590



WINDOW SCHEDULE



WINDOW No	W17	WALL TYPE- EXTERNAL WALL- ROOF TRUSS	INTERNAL SILL: FLOOR TILE CUT TO SIZE EXTERNAL SILL: FACEBRICK ON EDGE
LOCATION	TEACHERS BLOCK - ROOF LOUVRE		
WINDOW & FRAME	FRAME TO BE SEALED WITH CLEAR SILICON SEALANT BOTH SIDES OF FRAME THROUGHOUT		
GLAZING	NONE		
WINDOW/FRAME FINISHES	Aluminium window, able to withstand wind pressures of 1500Pa in accordance with SANS 613 with surfaces to receive 60-80µm powdercoating (for architectural applications), applied by a certified markholder of SANS 1578 and SANS 1796, glazing shall be executed strictly in conformance with glass manufacturer's recommendations and all in accordance with the National Building Regulations Parts B.N. T, SANS 10137, SANS 10400 and SANS 1263, plugged and screwed to brickwork or concrete. Colour: Interpon 'ANTHRACITE GREY' Matt, code: ITC 37016		
IRONMONGERY	NONE		
GENERAL	SHOPCOAT TO BE TOUCHED UP OPENING SECTION TO HAVE TWO BRUSHSEALS, ONE ON EITHER SIDE OF OPENING SECTION TWO CASEMENT FASTNERS PER SASH AND FRICTION STAYS TO BE HEAVY DUTY		

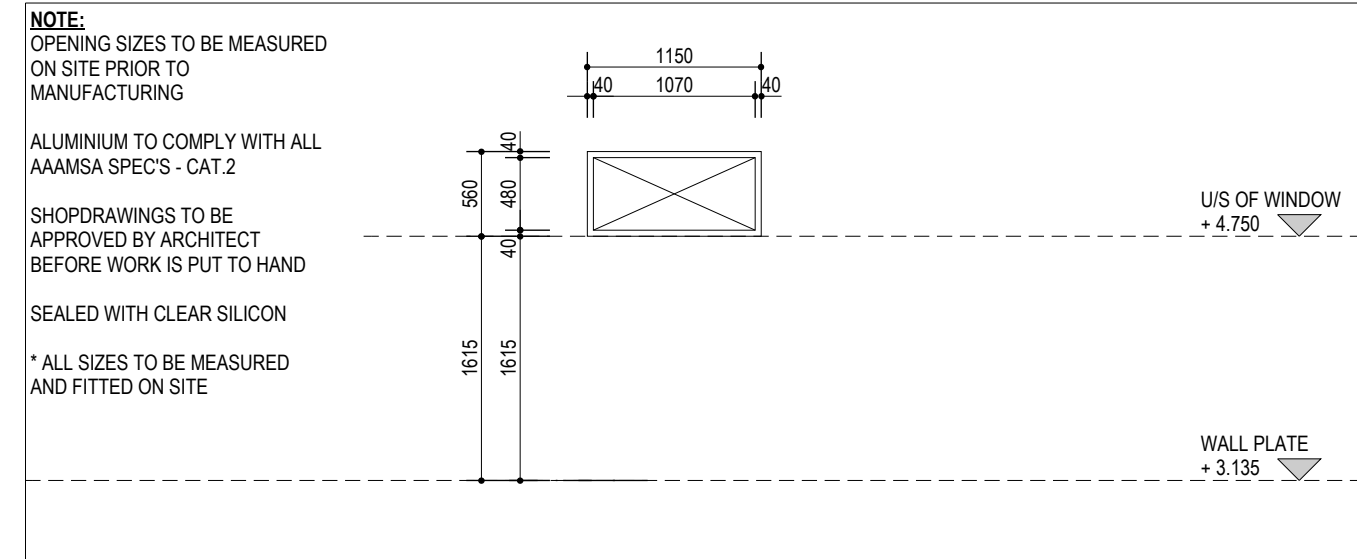
DATE	REV	COMMENTS	DWG. NUMBER	REV.
2015-08-07	A	ISSUE TO CLIENT	512.4	A
			DRAWN BY: DR_2015-05-25	CHECKED BY: JMA
			SCALE: 1:50	
			JOB NO. 521_SANPARKS MAPUNGUBWE	

**SANPARKS HOSTELS
MAPUNGUBWE**

JEREMIE MALAN ARCHITECTS
273 Tram Street, New Muckleneuk, Pretoria
P.O. Box 2396
Brooklyn Square 0075
Tel: 012 460 5388
Fax: 012 346 7447
malanar@mwa.co.za
www.malanarchitects.co.za
25°46'22.609"S 28°13'43.33"E
SACAP Reg. no. 3590



WINDOW SCHEDULE



WINDOW No	W18	WALL TYPE- EXTERNAL WALL- ROOF TRUSS	INTERNAL SILL: FLOOR TILE CUT TO SIZE EXTERNAL SILL: FACEBRICK ON EDGE
LOCATION	DINING BLOCK - ROOF SOLID ALUMINIUM PANEL		
WINDOW & FRAME	FRAME TO BE SEALED WITH CLEAR SILICON SEALANT BOTH SIDES OF FRAME THROUGHOUT		
GLAZING	NONE		
WINDOW/FRAME FINISHES	Aluminium window, able to withstand wind pressures of 1500Pa in accordance with SANS 613 with surfaces to receive 60-80µm powdercoating (for architectural applications), applied by a certified markholder of SANS 1578 and SANS 1796, glazing shall be executed strictly in conformance with glass manufacturer's recommendations and all in accordance with the National Building Regulations Parts B.N. T, SANS 10137, SANS 10400 and SANS 1263, plugged and screwed to brickwork or concrete. Colour: Interpon 'ANTHRACITE GREY' Matt, code: ITC 37016		
IRONMONGERY	NONE		
GENERAL	SHOPCOAT TO BE TOUCHED UP OPENING SECTION TO HAVE TWO BRUSHSEALS, ONE ON EITHER SIDE OF OPENING SECTION TWO CASEMENT FASTNERS PER SASH AND FRICTION STAYS TO BE HEAVY DUTY		

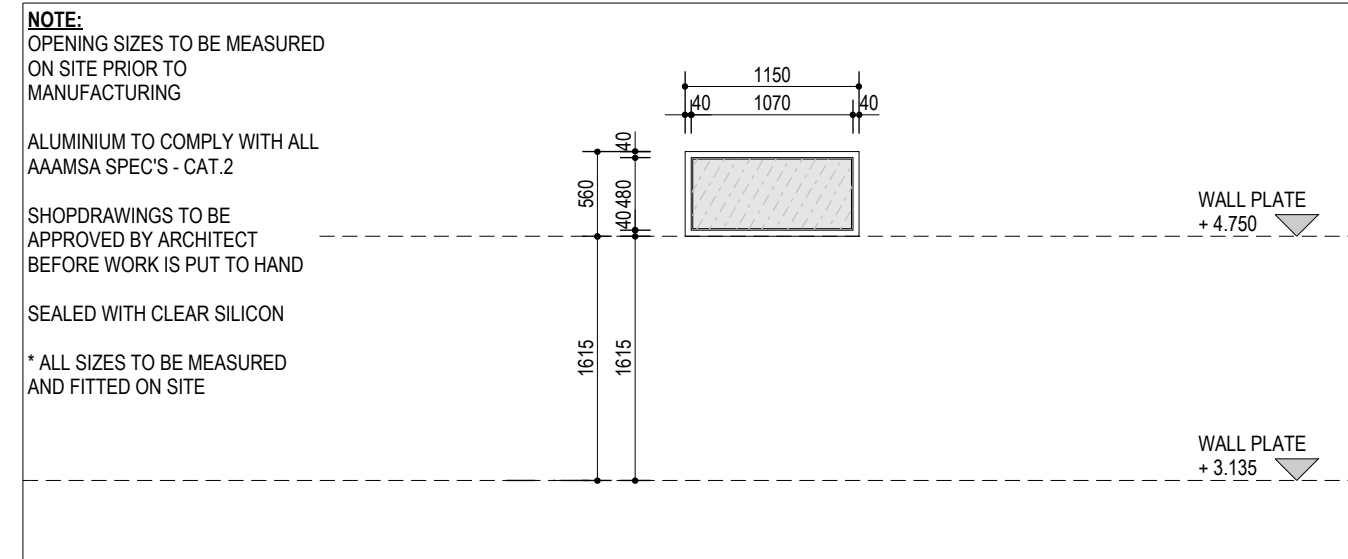
DATE	REV	COMMENTS	DWG. NUMBER	REV.
2015-08-07	A	ISSUE TO CLIENT	512.5	A
			DRAWN BY: DR_2015-05-25	CHECKED BY: JMA
			SCALE: 1:50	
			JOB NO. 521_SANPARKS MAPUNGUBWE	

**SANPARKS HOSTELS
MAPUNGUBWE**

JEREMIE MALAN ARCHITECTS
273 Tram Street, New Muckleneuk, Pretoria
P.O. Box 2396
Brooklyn Square 0075
Tel: 012 460 5388
Fax: 012 346 7447
malanar@mwa.co.za
www.malanarchitects.co.za
25°46'22.609"S 28°13'43.33"E
SACAP Reg. no. 3590



WINDOW SCHEDULE

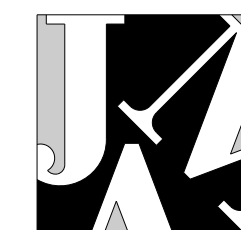


WINDOW No	W19	WALL TYPE- EXTERNAL WALL- ROOF TRUSS	INTERNAL SILL: FLOOR TILE CUT TO SIZE EXTERNAL SILL: FACEBRICK ON EDGE
LOCATION	DINING BLOCK - ROOF WINDOW		
WINDOW & FRAME	FRAME TO BE SEALED WITH CLEAR SILICON SEALANT BOTH SIDES OF FRAME THROUGHOUT		
GLAZING	GSA SmartGlass™ 6.38mm Advantage Grey® E Range Solar E laminated safety glass, complying with SANS 1263 Part 1, 2 or 3 with name of the manufacturer permanently marked on each sheet visible after glazing, glazed in accordance with NBR N schedule 1 and SABS 0137.		
WINDOW/FRAME FINISHES	Aluminium window, able to withstand wind pressures of 1500Pa in accordance with SANS 613 with surfaces to receive 60-80µm powdercoating (for architectural applications), applied by a certified markholder of SANS 1578 and SANS 1796, glazing shall be executed strictly in conformance with glass manufacturer's recommendations and all in accordance with the National Building Regulations Parts B.N. T, SANS 10137, SANS 10400 and SANS 1263, plugged and screwed to brickwork or concrete. Colour: Interpon 'ANTHRACITE GREY' Matt, code: ITC 37016		
IRONMONGERY	NONE		
GENERAL	SHOPCOAT TO BE TOUCHED UP OPENING SECTION TO HAVE TWO BRUSHSEALS, ONE ON EITHER SIDE OF OPENING SECTION TWO CASEMENT FASTNERS PER SASH AND FRICTION STAYS TO BE HEAVY DUTY		

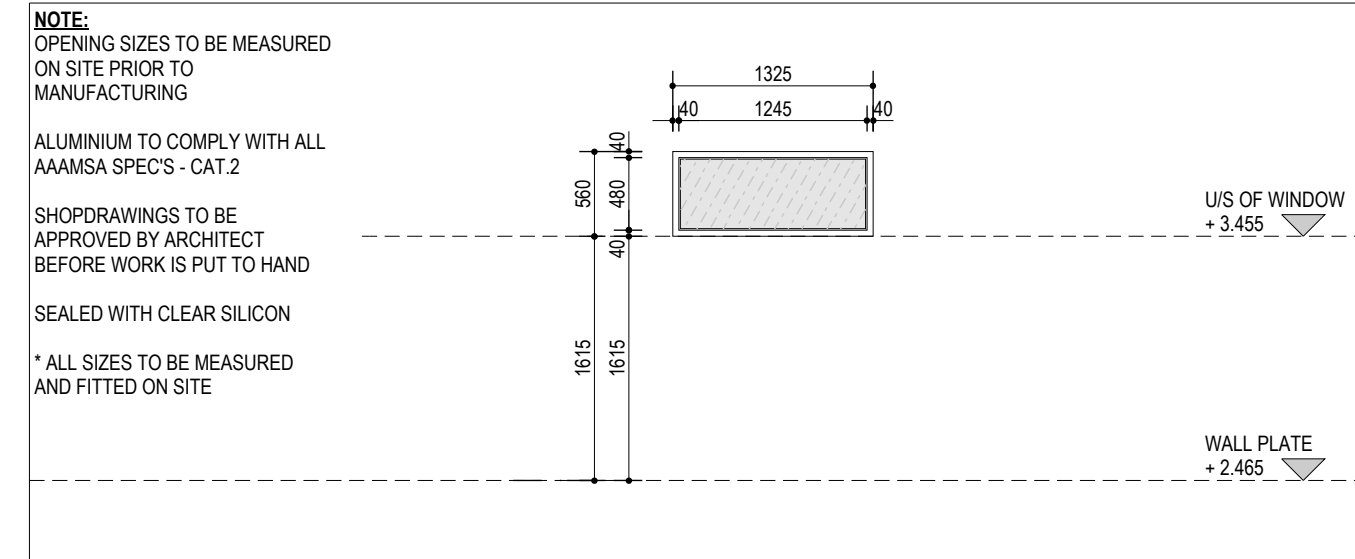
DATE	REV	COMMENTS	DWG. NUMBER	REV.
2015-08-07	A	ISSUE TO CLIENT	512.6	A
			DRAWN BY: DR_2015-05-25	CHECKED BY: JMA
			SCALE: 1:50	
			JOB NO. 521_SANPARKS MAPUNGUBWE	

**SANPARKS HOSTELS
MAPUNGUBWE**

JEREMIE MALAN ARCHITECTS
273 Tram Street, New Muckleneuk, Pretoria
P.O. Box 2396
Brooklyn Square 0075
Tel: 012 460 5388
Fax: 012 346 7447
malanar@mwa.co.za
www.malanarchitects.co.za
25°46'22.609"S 28°13'43.33"E
SACAP Reg. no. 3590



WINDOW SCHEDULE

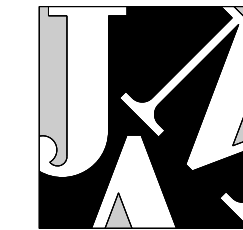


WINDOW No	W20	WALL TYPE- EXTERNAL WALL- ROOF TRUSS	INTERNAL SILL: FLOOR TILE CUT TO SIZE EXTERNAL SILL: FACEBRICK ON EDGE
LOCATION	DINING BLOCK - ROOF SOLID ALUMINIUM PANEL		
WINDOW & FRAME	FRAME TO BE SEALED WITH CLEAR SILICON SEALANT BOTH SIDES OF FRAME THROUGHOUT		
GLAZING	GSA SmartGlass™ 6.38mm Advantage Grey® E Range Solar E laminated safety glass, complying with SANS 1263 Part 1, 2 or 3 with name of the manufacturer permanently marked on each sheet visible after glazing, glazed in accordance with NBR N schedule 1 and SABS 0137.		
WINDOW/FRAME FINISHES	Aluminium window, able to withstand wind pressures of 1500Pa in accordance with SANS 613 with surfaces to receive 60-80µm powdercoating (for architectural applications), applied by a certified markholder of SANS 1578 and SANS 1796, glazing shall be executed strictly in conformance with glass manufacturer's recommendations and all in accordance with the National Building Regulations Parts B.N. T, SANS 10137, SANS 10400 and SANS 1263, plugged and screwed to brickwork or concrete. Colour: Interpon 'ANTHRACITE GREY' Matt, code: ITC 37016		
IRONMONGERY	NONE		
GENERAL	SHOPCOAT TO BE TOUCHED UP OPENING SECTION TO HAVE TWO BRUSHSEALS, ONE ON EITHER SIDE OF OPENING SECTION TWO CASEMENT FASTNERS PER SASH AND FRICTION STAYS TO BE HEAVY DUTY		

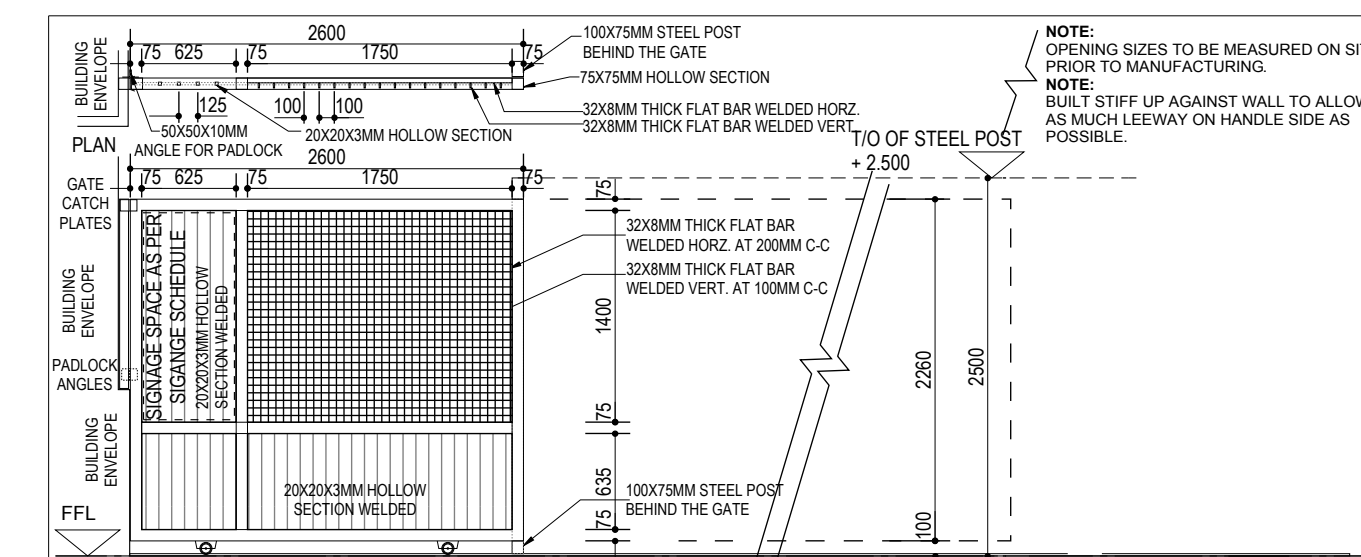
DATE	REV	COMMENTS	DWG. NUMBER	REV.
2015-08-07	A	ISSUE TO CLIENT	512.7	A
			DRAWN BY: DR_2015-05-25	CHECKED BY: JMA
			SCALE: 1:50	
			JOB NO. 521_SANPARKS MAPUNGUBWE	

**SANPARKS HOSTELS
MAPUNGUBWE**

JEREMIE MALAN ARCHITECTS
273 Tram Street, New Muckleneuk, Pretoria
P.O. Box 2396
Brooklyn Square 0075
Tel: 012 460 5388
Fax: 012 346 7447
malanar@mwa.co.za
www.malanarchitects.co.za
25°46'22.609"S 28°13'43.33"E
SACAP Reg. no. 3590



DOOR SCHEDULE



DOOR No	G1	WALL TYPE: 230mm BRICKWORK FACEBRICK ON BOTH SIDES	NOTE: 12mm dia. steel frames to interior 16mm dia. h.d. galv. steel frames in toilets in coastal regions 16mm dia. steel frames for fire doors
LOCATION	DINING BLOCK - COVERED WALK WAY GATE		
DOOR & FRAME	DOOR PANEL: 75X75MM STEEL STRUCTURE AS PER ENGINEERS SPECIFICATION 32X32MM THICK FLAT BARS HORIZONTAL @ 200MM C-C AND VERTICAL @ 100MM C-C 20X20MM SQUARE HOLLOW SECTIONS WELDED VERTICAL @ 100MM C-C		
GLAZING	NONE		
DOOR/FRAME FINISHES	FRAME : STEEL FRAME ROLLERS : 2X ROLLWAY HEAVY DUTY RANGE ROLLERS (WITH SLIM-LINE BRACKET) WK100HD AS PER MANUFACTURER SPECIFICATION FRAME PAINT: RED OXIDE PRIMED, UNDERCOAT & 2x COATS NON-D RIP SEMI GLOSS POLY-URITHANE ENAMEL		
IRONMONGERY & GENERAL	AS PER IRONMONGERY SCHEDULE		

DATE	REV	COMMENTS	DWG. NUMBER	DATE:	REV.
			512.15	2015-05-25	-
			DRAWN BY: DR	CHECKED BY: JMA	SCALE: 1:50
			JOB NO. 521_SANPARKS MAPUNGUBWE		