



# MEETING NOTES

<b>JOB TITLE</b>	Euronotus Consents
<b>PROJECT NUMBER</b>	41103473
<b>DATE</b>	08 October 2021
<b>TIME</b>	10h00
<b>VENUE</b>	Online (MS Teams)
<b>SUBJECT</b>	Pre-Application Meeting with DFFE
<b>CLIENT</b>	Red Rocket South Africa (Pty) Ltd / G7 Renewable Energies (Pty) Ltd
<b>PRESENT</b>	Zama Langa (DFFE) – ZL Juliet Mahlangu (DFFE – Case Officer) – NN Dr. Danie Smit (DFFE) – DS Caryn Clarke (G7) - CC Colette Stander (G7) - CS Janine Brasington (Red Rocket) - JB Magdalena Logan (Red Rocket) - ML Ashlea Strong (WSP) – AS Babalwa Mqokeli (WSP) – BM
<b>APOLOGIES</b>	Jennifer Green (WSP) Veronique Vyfe (G7)
<b>DISTRIBUTION</b>	As above ( <b>Appendix A</b> )

<b>MATTERS ARISING</b>	<b>ACTION</b>
<b>1.0 INTRODUCTIONS AND WELCOME</b>	
<ul style="list-style-type: none"><li>AS welcomed everyone followed by a round of introductions and an overview of the meeting agenda.</li><li>A PowerPoint presentation was presented to all attendees to provide information on the projects.</li></ul> <p><i>*AS received consent from all parties present to record the meeting.</i></p> <p><i>** A copy of the PowerPoint presentation has been attached hereto for reference (<b>Appendix B</b>).</i></p>	
<b>2.0 PRESENTATION AND DISCUSSION</b>	
<b>2.1 Project Background and Description</b> <ul style="list-style-type: none"><li>AS provided a brief overview of the Project, outlining the various consents required for the complex as well as identifying the three Special Project Vehicles (SPVs) as the</li></ul>	<ul style="list-style-type: none"><li>Minutes and PPP to be submitted via email</li></ul>

The Pavilion, 1st Floor  
Cnr Portswood and Beach Road, Waterfront  
Cape Town, 8001  
South Africa

T: +27 21 481 8700  
F: +086 606 7121  
www.wsp.com

\\corp.pbwan.net\za\Central\_Data\Projects\41100xxx\41103473 - G7 energy - Euronotus Cluster\41 ES\01-Reports\03-Pre-Application Meeting\41103473\_20211008\_Euronotus\_DFFE Pre-Application Meeting Minutes\_Final.docx

**MATTERS ARISING**

**ACTION**

<p>Applicants (i.e. Brandvalley Wind Farm (Pty) Ltd, Karreebosch Wind Farm (Pty) Ltd and Rietkloof Wind farm (Pty) Ltd.</p> <ul style="list-style-type: none"> <li>– The consents include the following:           <ul style="list-style-type: none"> <li>▪ Updating and approval of the EMPs and layouts for the WEFs and overhead powerlines (OHPL) as required by the existing EAs</li> <li>▪ Part 1 Amendment Processes to increase the turbine size from 5.5 MW to 6 MW (Karreebosch and Brandvalley)</li> <li>▪ Part 2 Amendment Process to increase the hub height and rotor diameter of 9 turbines to the same specifications as approved WTGs; WTGs will also be increased to 6 MW (Rietkloof)</li> <li>▪ Undertaking one new Basic Assessment Process for a new Transmission integration powerline to integrate the Karreebosch WEF to the National Grid</li> </ul> </li> <li>– Layouts of the WEFs and the Powerlines were shown.</li> <li>– The location of the Project areas was identified as being in the Karoo Hoogland and Laingsburg Local Municipalities, in the Northern and Western Cape.</li> <li>– The farm portions affected by the three WEFs were outlined.</li> <li>– Key considerations noted included the presence of CBAs, ESAs, NPAES, and that the projects fall within the Central Strategic Transmission Corridor (STC) and the Komsberg Renewable Energy Development Zone (REDZ).</li> </ul>	<ul style="list-style-type: none"> <li>– PP Plan must include stakeholder databases</li> </ul>
<p><b>2.2 EMPs Updates and Final Layouts</b></p> <ul style="list-style-type: none"> <li>– AS ran through the EMPs updates that are required.</li> <li>– It was confirmed that these are not Regulation 37 processes as the EMPs are not yet approved.</li> <li>– Furthermore, it was confirmed that the final layouts will be submitted as part of the EMPs approval process and will not trigger a Part 2 amendment as they are not yet approved.</li> </ul>	
<p><b>2.3 Part 1 and Part 2 Amendment Processes</b></p> <ul style="list-style-type: none"> <li>– AS presented the proposed Part 1 Amendments applicable to the Karreebosch and Brandvalley WEFs regarding the increase in turbine capacity.</li> <li>– It was confirmed that the construction camp location change for the Karreebosch WEF can be accommodated within the Final Layout and EMPs amendment.</li> <li>– It was confirmed that the changes related to Karreebosch WEF and Brandvalley WEF do constitute Part 1 Amendments</li> <li>– AS presented the Part 2 Amendment applicable to the Rietkloof WEF regarding the increase in hub height and rotor diameter of the 9 smaller approved turbines.</li> <li>– ZL confirmed that proposed changes to the Rietkloof WEF to constitute a Part 2 Amendment.</li> </ul>	
<p><b>2.4 Karreebosch OHPL Basic Assessment Process</b></p> <ul style="list-style-type: none"> <li>– AS ran through the applicable Listed Activities of the EIA Regulations (2014, as amended), noting a Basic Assessment (BA) process is required for the application for Environmental Authorisation.</li> </ul>	
<p><b>2.5 Specialist Assessments</b></p> <ul style="list-style-type: none"> <li>– AS ran through the identified sensitivities as per the DFFE Online Screening Tool report, and specialist assessments noted therein.</li> <li>– AS identified the specialist assessments that are to be undertaken as part of the BA process, as well as the studies that are not being undertaken as part of the assessment and supporting reasons for their exclusion.</li> </ul>	
<p><b>2.6 Competent Authority</b></p> <ul style="list-style-type: none"> <li>– AS indicated that DFFE had been identified as the Competent Authority (CA).</li> <li>– ZL confirmed that DFFE is the CA</li> </ul>	
<p><b>2.7 Public Participation Process</b></p> <ul style="list-style-type: none"> <li>– AS provided an overview of the proposed public participation process in accordance with the EIA Regulations (2014, as amended).</li> <li>– AS noted that a draft Public Participation (PP) Plan will be issued to DFFE along with the meeting minutes for review and approval.</li> </ul>	

## MEETING NOTES

MATTERS ARISING	ACTION
<p>— ZL requested that the Final PP Plan must indicate the PP proposed for each separate process (i.e. EMPr updates, Part 2 Amendment and the Basic Assessment)</p> <p>— ZL requested the PP Plan to include the existing Stakeholder Databases such that the DFFE can confirm that the relevant stakeholders (such as DFFE: Biodiversity, CAA, SKA, SAWS etc.) are included.</p> <p><b>2.8 Timeframes</b></p> <p>— AS noted the following Authority timeframes:</p> <ul style="list-style-type: none"> <li>▪ Basic Assessment – 57 days</li> <li>▪ EMPr Updates – 30 days</li> <li>▪ Part 1 Amendment – 30 days</li> <li>▪ Part 2 Amendment – 57 days</li> </ul> <p>— JM confirmed that these timeframes were correct.</p>	
<p><b>3.0 QUESTIONS AND COMMENTS</b></p>	
<p>JG opened the floor for any comments or questions. The following items were raised and discussed.</p> <p><b>3.1 Confirmation of Online Submission</b></p> <p>— AS noted that the BA and Amendment Applications would be submitted via the DFFE online submission platform.</p> <p>— AS requested confirmation that the DFFE online submission platform will also be utilised for the submission of the EMPr and Layout updates?</p> <p>— ZL confirmed that the DFFE online submission platform should be used for all submissions</p> <p><b>3.2 Future Pre-Application Meeting requests</b></p> <p>— ZL requested that in future a separate pre-application request should be submitted for each aspect of the project so that the DFFE can allocate different case officers to each aspect of the project.</p> <p>— This request was acknowledged.</p>	
<p><b>4.0 WAY FORWARD</b></p>	
<p>— AS summarised the following action points for the way forward:</p> <ul style="list-style-type: none"> <li>▪ WSP to formalise meeting minutes and submit via email to DFFE, along with the PP Plan, for approval.</li> <li>▪ WSP to draft the application form and submit to DFFE.</li> <li>▪ WSP to submit all documentation via the online platform.</li> </ul> <p>No further points were raised for discussion.</p> <p>The meeting was closed at 11:00</p>	<p>— WSP to formalise meeting minutes and distribute, along with PPP, for approval</p>

## NEXT MEETING

No additional meetings have been scheduled.


## MEETING NOTES

### APPENDIX A: MEETING ATTENDANCE

<b>Meeting Start Time</b>	10/8/2021, 9:56:02 AM					
<b>Meeting End Time</b>	10/8/2021, 12:11:03 PM					
<b>Meeting Id</b>	b370378a-f486-4bf1-abd0-bae3750274f9					
<b>Full Name</b>	<b>Join Time</b>	<b>Leave Time</b>	<b>Duration</b>	<b>Email</b>	<b>Role</b>	<b>Participant ID (UPN)</b>
Mqokeli, Babalwa	10/8/2021, 9:56:02 AM	10/8/2021, 12:11:03 PM	2h 15m	Babalwa.Mqokeli@wsp.com	Presenter	Babalwa.Mqokeli@wsp.com
Strong, Ashlea	10/8/2021, 9:56:02 AM	10/8/2021, 12:11:03 PM	2h 15m	Ashlea.Strong@wsp.com	Organizer	Ashlea.Strong@wsp.com
Dr. Danie Smit	10/8/2021, 9:56:08 AM	10/8/2021, 10:57:13 AM	1h 1m	dsmit@environment.gov.za	Presenter	dsmit@environment.gov.za
Zama Langa	10/8/2021, 9:58:48 AM	10/8/2021, 10:57:12 AM	58m 23s	zlanga@environment.gov.za	Presenter	zlanga@environment.gov.za
Julliet Mahlangu	10/8/2021, 9:59:29 AM	10/8/2021, 10:57:14 AM	57m 45s	jmmahlangu@environment.gov.za	Presenter	jmmahlangu@environment.gov.za
Colette Alisha Stander	10/8/2021, 10:00:38 AM	10/8/2021, 10:09:25 AM	8m 47s	Colette@g7energies.onmicrosoft.com	Presenter	Colette@g7energies.onmicrosoft.com
Janine Brasington	10/8/2021, 10:01:16 AM	10/8/2021, 10:57:11 AM	55m 54s	j.brasington@redrocket.energy	Presenter	j.brasington@redrocket.energy
Caryn Clarke	10/8/2021, 10:01:46 AM	10/8/2021, 10:03:38 AM	1m 52s	caryn@g7energies.onmicrosoft.com	Presenter	caryn@g7energies.onmicrosoft.com
Caryn Clarke	10/8/2021, 10:09:43 AM	10/8/2021, 10:57:13 AM	47m 29s	caryn@g7energies.onmicrosoft.com	Presenter	caryn@g7energies.onmicrosoft.com

## MEETING NOTES

### APPENDIX B: PRESENTATION



**DFFE Pre-Application Meeting**


*Euronotus Cluster - Environmental Consents, Northern and Western Cape*

October 2021

1

**Agenda**

1. Introductions
2. Overview of the Project
  - Background
  - Location
  - Technical Description
3. Overview and Confirmation of Permitting Processes
  - EMPr Updates and Final Layouts
  - Part 1 Amendments
  - Part 2 Amendment
  - Basic Assessment
    - Listed Activities
    - Specialist Assessments as identified by DEA Screening Tool
    - Specialist Studies commissioned
  - Competent Authority
4. Public Participation Process
5. Timeframes
6. Questions and Discussions
7. Way Forward



2

## 1. Introductions



- G7 Renewable Energies (Pty) Ltd:
  - Veronique Fyfe
  - Caryn Clarke
- Red Rocket South Africa (Pty) Ltd:
  - Magdalena Logan
  - Janine Brasington
- WSP Group Africa (Pty) Ltd:
  - Jennifer Green (Environmental Consultant)
  - Babalwa Mqokeli (Senior Environmental Consultant)
  - Ashlea Strong (Project Manager)
- Department of Forestry, Fisheries and Environment (DFFE):
  - Julliet Mahlangu
  - Zama Langa
  - Danie Smit

3

3

## 2. Overview of the Project



### Background

- Applicants:
  - Brandvalley Wind Farm (Pty) Ltd
  - Karreebosch Wind Farm (Pty) Ltd
  - Rietkloof Wind Farm (Pty) Ltd
- Red Rocket South Africa (Pty) Ltd have included all three of the above-mentioned Wind Energy Facilities (WEFs) as part of their submissions for the Round 5 REIPPPP Bidding.
- As part of this process they were required to ensure that the required Environmental Consents for these projects are underway. These include:
  - Updating and approval of the EMPs and layouts for the WEFs and overhead powerlines (OHPL) as required by the existing EAs
  - Part 1 Amendment Processes to increase the turbine size from 5.5 MW to 6 MW (Karreebosch and Brandvalley)
  - Part 2 Amendment Process to increase the hub height and rotor diameter of 9 turbines to the same specifications as approved WTGs; WTGs will also be increased to 6 MW (Rietkloof)
  - Undertaking one new Basic Assessment Process for a new Transmission integration powerline to integrate the Karreebosch WEF to the National Grid

4

4

## 2. Overview of the Project



### Existing Environmental Authorisations

- Karreebosch WEF:
  - 14/12/16/3/3/2/807 – 29 January 2016
  - 14/12/16/3/3/2/807/AM1 – 10 June 2016
  - 14/12/16/3/3/2/807/AM2 – 15 November 2018
  - 14/12/16/3/3/2/807/AM3 – 30 October 2019
- Brandvalley WEF:
  - 14/12/16/3/3/1/900 – 23 November 2016
  - 14/12/16/3/3/1/900/AM1 – 14 February 2019
- Brandvalley Power Integration:
  - 14/12/16/3/3/1/1591 – 23 November 2016
- Rietkloof WEF:
  - 14/12/16/3/3/2/899 – 23 November 2016 (9 Turbines)
  - 14/12/16/3/3/2/1977 – 10 April 2019 (51 Turbines)
  - 14/12/16/3/3/2/1977/AM1 – 9 May 2019
  - 14/12/16/3/3/2/1977/AM1 – 16 September 2019 (Merged EA)
- Rietkloof Power Integration:
  - 14/12/16/3/3/1/1590 – 23 November 2016

5

5

## 2. Overview of the Project



### Location

	Brandvalley WEF	Karreebosch WEF	Rietkloof WEF
Province:	Western and Northern Cape Province	Western and Northern Cape Province	Western Cape Province
Local Municipality:	Karoo Hoogland and Laingsburg	Karoo Hoogland and Laingsburg	Laingsburg
Farms:	<ul style="list-style-type: none"> <li>• Farm Barendskraal 76 Remainder and Portion 1</li> <li>• Farm Brandvalley 75 Remainder and Portion 1</li> <li>• Farm Fortuin 74 Remainder, Portion 1 and Portion 3</li> <li>• Farm Kabettouw 160 Remainder</li> <li>• Farm Muishond Rivier 161 Remainder and Portion 1</li> <li>• Farm Rietfontein 197.</li> </ul>	<ul style="list-style-type: none"> <li>• Farm Appelsfontein 201</li> <li>• Farm Ekkraal 199 Remainder, Portion 1 and Portion 2</li> <li>• Farm Karreebosch 200 Remainder</li> <li>• Farm Karreekloof 196 Portion 1</li> <li>• Farm Kiepbanksfontein 198 Remainder and Portion 1</li> <li>• Farm Kranskraai 189</li> <li>• Farm Oude Huis 195</li> <li>• Farm Rietfontein 197</li> <li>• Farm Roode Wal 187</li> <li>• Farm Standvastigheid 210 Portion 2</li> <li>• Farm Wilgebosch Rivier 188 Remainder</li> <li>• Farm Apn'Is Kraal 105</li> <li>• Farm Bon Espirange 73 Remainder and Portion 1</li> </ul>	<ul style="list-style-type: none"> <li>• Farm Barendskraal 76 Portion 1</li> <li>• Farm Fortuin 74 Remainder and Portion 3</li> <li>• Farm Hartjieskraal 77 Remainder and Portion 1</li> <li>• Farm Nuwerus 284 Remainder</li> <li>• Farm Rietkloof Annexe 88 Portion 1</li> <li>• Farm Snyders Kloof 80 Remainder and Portion 1</li> <li>• Farm Vogelstruisfontein 81;</li> <li>• Farm Wilgehout Fontein 87 Remainder</li> </ul>

6

6

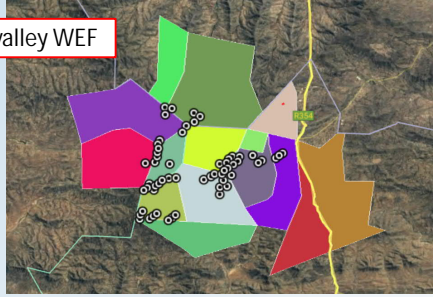


## 2. Overview of the Project

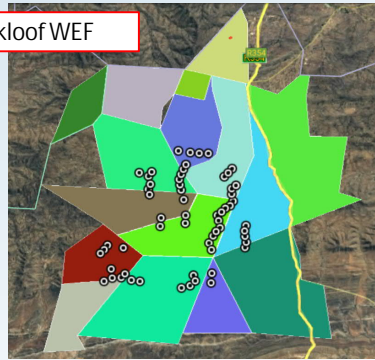
Layouts as submitted with Final EIA



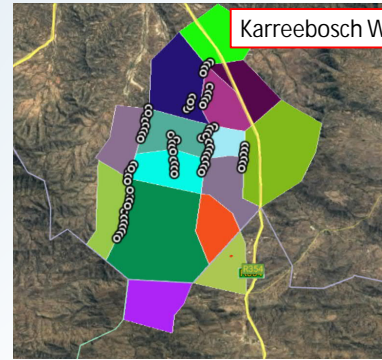
Brandvalley WEF



Rietkloof WEF



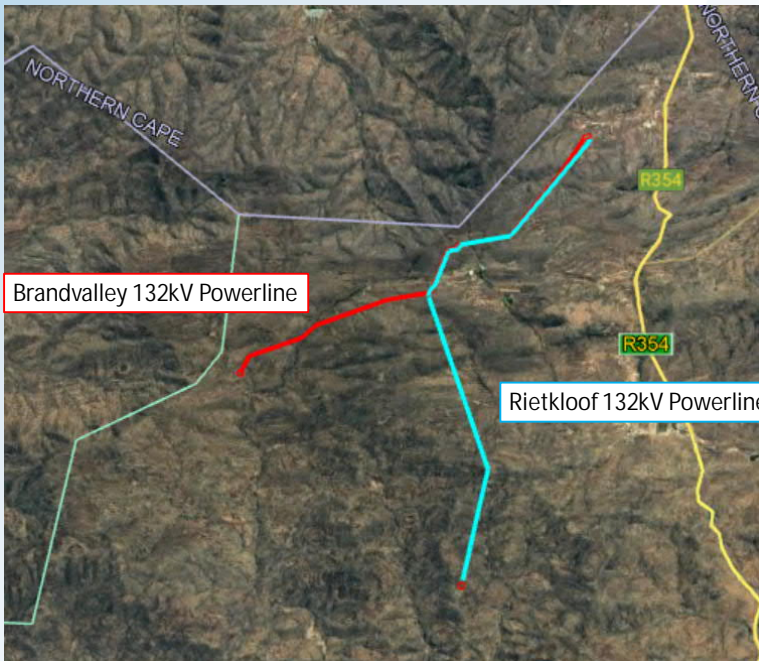
Karreebosch WEF



7

7

## 2. Overview of the Project



Brandvalley 132kV Powerline

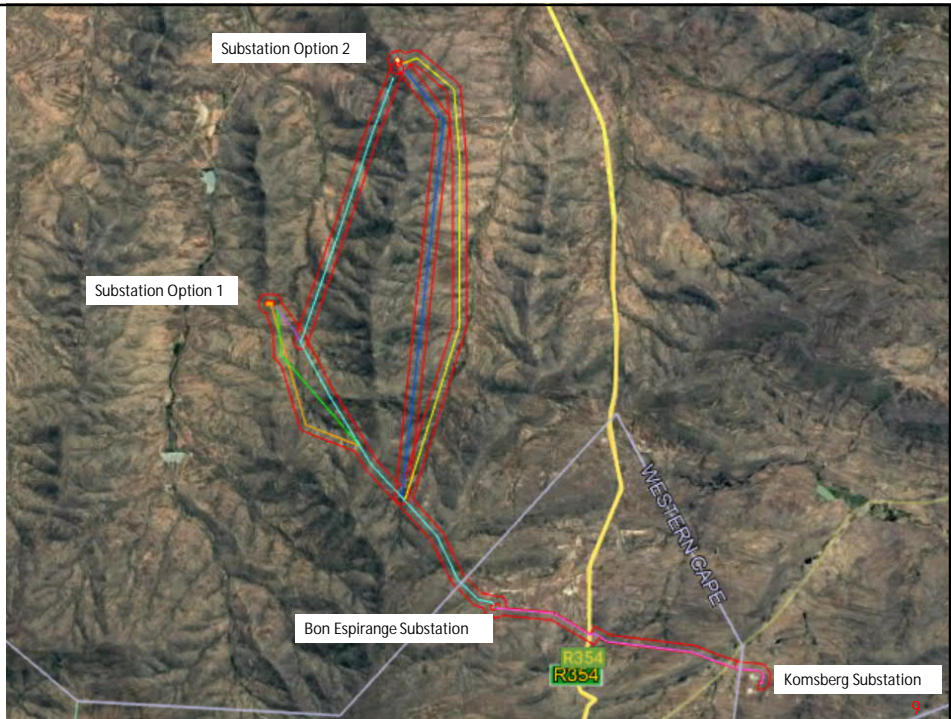
Rietkloof 132kV Powerline

8

8

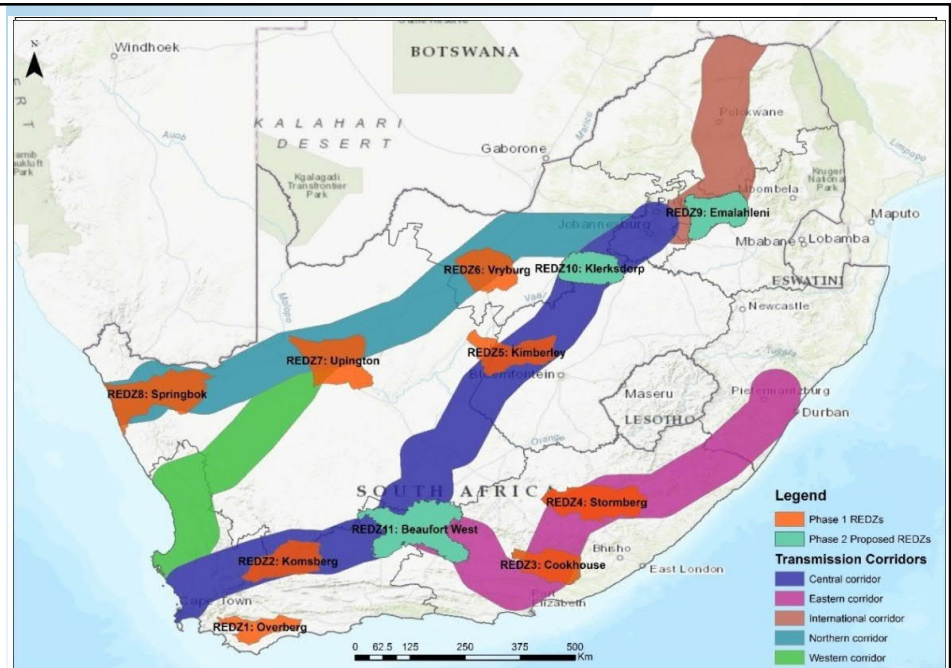
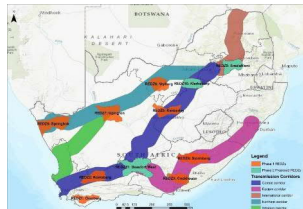
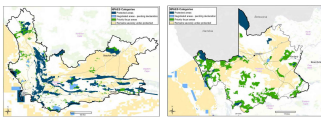
## 2. Overview of the Project

Karreebosch 132kV Powerline



9

## 2. Overview of the Project



10

10


### 3. Permitting Processes

## EMPr Update and Final Layout Processes

- The EAs issued for the WEFs and the Rietkloof and Brandvalley powerlines indicate that the EMPrs and layouts submitted as part of the original EIA process were not approved and must be updated.

16. The Environmental Management Programme (EMPr) submitted as part of the EIA is not approved and must be amended to include measures as dictated by the final site lay-out map and micro-siting; and the provisions of this environmental authorisation. The EMPr must be made available for comments by registered Interested and Affected Parties and the holder of this environmental authorisation must consider such comments. Once amended, the final EMPr must be submitted to the Department for written approval prior to commencement of the activity. Once approved the EMPr must be implemented and adhered to.

- Confirmation:
  - Amended EMPrs will just be submitted for approval
  - These are not Regulation 37 processes as the EMPrs are not yet approved
  - The final layout will be submitted as part of the EMPr approval process and will not trigger a Part 2 amendment as they are not yet approved



11

11

### 3. Permitting Processes

## Part 1 Amendment Processes

- Karreebosch WEF
  - The Applicant intends to use turbines of up to 6MW. The EA currently authorises turbines of 5.5MW.
  - The increase in MW per turbine will not alter the hub height or rotor diameter of the turbine. The number of approved turbines will also be decreased to a maximum of up to 35. This is also applicable to Rietkloof and Brandvalley.
  - A Part 1 Amendment will therefore be required to amend the EA to allow for turbines of up to 6MW as this is a non-substantive amendment.
  - Following a recent specialist site walkover, it was noted that the approved construction camp for Karreebosch is currently located in an 8m wide watercourse and will therefore need to be relocated. The construction camp is proposed to be located closer to the R354 in an area with lower environmental sensitivities. The construction camp will remain on the same farm portion that was previously assessed as part of the EIA.
  - The EMPr update and final layout will reflect the new location of the construction camp.
  - Specialists will provide input regarding the new construction camp location.


12

12



### 3. Permitting Processes

#### Part 1 Amendment Processes

- Brandvalley WEF
  - A Part 1 Amendment Application was submitted on 14 September 2021 to extend the validity period of the EA and a decision is expected by 15 October 2021.
  - As with Karreebosch, the Applicant intends to use turbines of up to 6MW. The EA currently authorises turbines of 5.5MW.
  - The increase in MW per turbine will not alter the hub height or rotor diameter of the turbine.
  - The number of approved turbines will also be decreased to a maximum of up to 35.
  - A Part 1 Amendment will therefore be required to amend the EA to allow for turbines of up to 6MW as this is a non-substantive amendment.



13

13

### 3. Permitting Processes

#### Part 2 Amendment Process


- Rietkloof WEF
  - The EA currently approves two types of wind turbines with different specifications.
  - The Project engineers and wind turbine manufacturers have advised that the 9 smaller approved turbines (with an approved hub height of 120m and rotor diameter of 140m) should be used in the final layout.
  - The hub height and rotor diameter of these 9 turbines will need to be increased to the same specifications as the approved 51 WTGs.
  - The Applicant intends to use turbines of up to 6MW. The EA currently authorises turbines of 5.5MW.
  - A Part 2 Amendment Process will therefore need to be undertaken as the increase in hub height and rotor diameter is a substantive amendment.
  - The construction camp for the Rietkloof WEF needs to be relocated out of viable agricultural land to the Roggeveld WEF batch plant area as this will result in lower environmental and social impacts.
  - The relocation of the construction camp will be applied for in the same Part 2 Amendment process to increase the hub height and rotor diameter of the turbines.



14

14

### 3. Permitting Processes




## Basic Assessment Processes for 132kV Powerline

- The Applicant is looking to investigate a 132kV power integration option for the Karreebosch WEF.
- Overhead Powerline
  - Approximately 20km in length
  - 132kV steel single or double structure with kingbird conductor
  - A 100m corridor around the powerline will be assessed
  - Pole positions will only be available post preferred bidder award (i.e. once the powerline design has started)
- Construction Methodology
  - Standard overhead line construction methodology will be employed-
  - Drill holes or excavate (depending on ground conditions), plant poles, string conductor
  - Not envisaged that any large excavations and stabilized backfill will be required

15

15

### 3. Permitting Process



## Listed Activities

- Listing Notice 1 - GNR 327

LISTED ACTIVITY	DESCRIPTION OF PROJECT ACTIVITY
<b>Activity 11:</b> The development of facilities or infrastructure for the transmission and distribution of electricity— (i) outside urban areas or industrial complexes with a capacity of more than 33 but less than 275 kilovolts; or (ii) inside urban areas or industrial complexes with a capacity of 275 kilovolts or more; excluding the development of bypass infrastructure for the transmission and distribution of electricity where such bypass infrastructure is— (a) temporarily required to allow for maintenance of existing infrastructure; (b) 2 kilometres or shorter in length; (c) within an existing transmission line servitude; and (d) will be removed within 18 months of the commencement of development.	The 132 kV transmission line will connect the Karreebosch WEF to the national grid. The WEF and the transmission line are outside of the urban edge. This activity is therefore triggered by the proposed construction of the transmission infrastructure.
<b>Activity 12 (i), (a) and (c):</b> The development of— (i) infrastructure or structures with a physical footprint of 100 square metres or more; where such development occurs— (a) within a watercourse; or (c) if no development setback exists, within 32 metres of a watercourse, measured from the edge of a watercourse	The powerline will require the erection of tower structures, which may require a construction area of approximately 100m <sup>2</sup> . There is the potential that a tower structure or access road will transverse a watercourse (or drainage line). This activity will potentially be triggered by the proposed construction of the transmission infrastructure.
<b>Activity 19</b> The infilling or depositing of any material of more than 10 cubic metres into, or the dredging, excavation, removal or moving of soil, sand, shells, shell grit, pebbles or rock of more than 10 cubic metres from a watercourse	The powerline will require the erection of tower structures and access roads. There is the potential that a tower structure or access road will transverse a watercourse (or drainage line) which will require excavation of removal of soil or sand from the watercourse. This activity will potentially be triggered by the proposed construction of the transmission infrastructure.
<b>Activity 27:</b> The clearance of an area of 1 hectares or more, but less than 20 hectares of indigenous vegetation, except where such clearance of indigenous vegetation is required for— (i) the undertaking of a linear activity; maintenance purposes undertaken in accordance with a maintenance management plan.	The powerline is considered a linear activity and therefore this activity is not triggered by the proposed construction of the transmission lines. However, the construction of the common 132 kV on-site substation will require the clearance of indigenous vegetation of more than 1ha but less than 20 ha.

16

16

### 3. Permitting Process

A Basic Assessment Process is therefore proposed for the Project



### Listed Activities (Cont.)

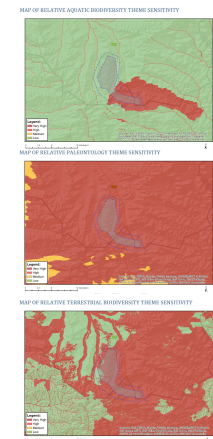
- Listing Notice 3 - GNR 324

LISTED ACTIVITY	DESCRIPTION OF PROJECT ACTIVITY
<b>Activity 4:</b> The development of a road wider than 4 metres with a reserve less than 13.5 metres. (i) Western Cape; (ii) areas outside urban areas (aa) containing indigenous vegetation	The transmission line routes traverse Critical Biodiversity Areas and fall within National Protected Areas Expansion Strategy Focus Areas. The transmission line may require an access road (of approximately 4 m in width) although it will likely be a two-track road. This activity is potentially triggered by the proposed construction of the transmission infrastructure.
<b>Activity 12 (i) (i) and (ii):</b> The clearance of an area of 300 square metres or more of indigenous vegetation. Except where such clearance of indigenous vegetation is required for maintenance purposes undertaken in accordance with a maintenance management plan.  <b>Northern Cape</b> i. Within any critically endangered or endangered ecosystem listed in terms of section 52 of the NEMBA or prior to the publication of such a list, within an area that has been identified as critically endangered in the National Spatial Biodiversity Assessment 2004; ii. Within critical biodiversity areas identified in bioregional plans.	The transmission line routes traverse Critical Biodiversity Areas and fall within National Protected Areas Expansion Strategy Focus Areas. The construction of the common 132 kV on-site substation will require the clearance of more than 300 m <sup>2</sup> of indigenous vegetation. This activity is therefore triggered by the proposed construction of the transmission infrastructure.
<b>Activity 14 (i) (a) and (c) (i) (b) and (ff):</b> The development of— (i) infrastructure or structures with a physical footprint of 10 square metres or more; where such development occurs— (a) within a watercourse; or (c) if no development setback has been adopted, within 32 metres of a watercourse, measured from the edge of a watercourse;.  <b>Northern Cape</b> i. Outside urban areas; (bb) National Protected Area Expansion Strategy Focus areas; (ff) Critical biodiversity areas or ecosystem service areas as identified in systematic biodiversity plans adopted by the competent authority or in bioregional plans.	The transmission line routes traverse Critical Biodiversity Areas and fall within National Protected Areas Expansion Strategy Focus Areas.  The powerlines will require the erection of tower structures, which may require a construction area of approximately 100m <sup>2</sup> . There is the potential that a tower structure or access road will transverse a watercourse (or drainage line). This activity is therefore triggered by the proposed construction of the transmission infrastructure.

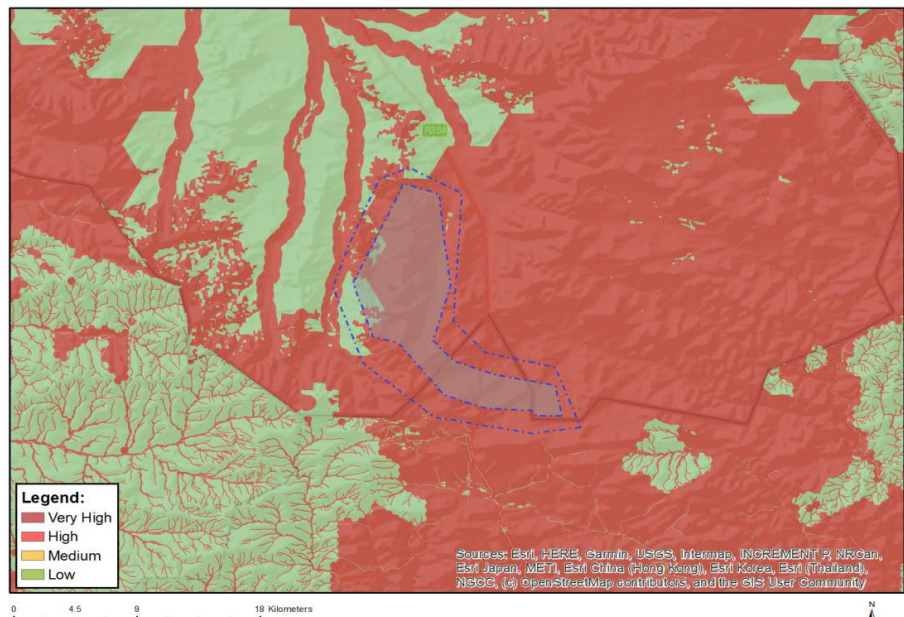
17

17

### 3. Permitting Process



### MAP OF RELATIVE TERRESTRIAL BIODIVERSITY THEME SENSITIVITY



18

### 3. Permitting Process



## DEA Screening Tool Specialist Assessments

- Agricultural
- Landscape/Visual
- Archaeological & Cultural Heritage
- Palaeontology
- Terrestrial Biodiversity
- Aquatic Biodiversity
- Avian
- Civil Aviation
- Radio Frequency Interference (RFI)
- Geotechnical
- Plant Species
- Animal Species

No	Specialist assessment	Assessment Protocol
1	Agricultural Impact Assessment	<a href="https://screening.environment.gov.za/ScreeningDownloads/AssessmentProtocols/Gazetted_General_Agriculture_Assessment_Protocols.pdf">https://screening.environment.gov.za/ScreeningDownloads/AssessmentProtocols/Gazetted_General_Agriculture_Assessment_Protocols.pdf</a>
2	Landscape/Visual Impact Assessment	<a href="https://screening.environment.gov.za/ScreeningDownloads/AssessmentProtocols/Gazetted_General_Requirement_Assessment_Protocols.pdf">https://screening.environment.gov.za/ScreeningDownloads/AssessmentProtocols/Gazetted_General_Requirement_Assessment_Protocols.pdf</a>
3	Archaeological and Cultural Heritage Impact Assessment	<a href="https://screening.environment.gov.za/ScreeningDownloads/AssessmentProtocols/Gazetted_General_Requirement_Assessment_Protocols.pdf">https://screening.environment.gov.za/ScreeningDownloads/AssessmentProtocols/Gazetted_General_Requirement_Assessment_Protocols.pdf</a>
4	Palaeontology Impact Assessment	<a href="https://screening.environment.gov.za/ScreeningDownloads/AssessmentProtocols/Gazetted_General_Requirement_Assessment_Protocols.pdf">https://screening.environment.gov.za/ScreeningDownloads/AssessmentProtocols/Gazetted_General_Requirement_Assessment_Protocols.pdf</a>
5	Terrestrial Biodiversity Impact Assessment	<a href="https://screening.environment.gov.za/ScreeningDownloads/AssessmentProtocols/Gazetted_Terrestrial_Biodiversity_Assessment_Protocols.pdf">https://screening.environment.gov.za/ScreeningDownloads/AssessmentProtocols/Gazetted_Terrestrial_Biodiversity_Assessment_Protocols.pdf</a>
6	Aquatic Biodiversity Impact Assessment	<a href="https://screening.environment.gov.za/ScreeningDownloads/AssessmentProtocols/Gazetted_Aquatic_Biodiversity_Assessment_Protocols.pdf">https://screening.environment.gov.za/ScreeningDownloads/AssessmentProtocols/Gazetted_Aquatic_Biodiversity_Assessment_Protocols.pdf</a>
7	Avian Impact Assessment	<a href="https://screening.environment.gov.za/ScreeningDownloads/AssessmentProtocols/Gazetted_Avifauna_Assessment_Protocols.pdf">https://screening.environment.gov.za/ScreeningDownloads/AssessmentProtocols/Gazetted_Avifauna_Assessment_Protocols.pdf</a>
8	Civil Aviation Assessment	<a href="https://screening.environment.gov.za/ScreeningDownloads/AssessmentProtocols/Gazetted_Civil_Aviation_Installations_Assessment_Protocols.pdf">https://screening.environment.gov.za/ScreeningDownloads/AssessmentProtocols/Gazetted_Civil_Aviation_Installations_Assessment_Protocols.pdf</a>
9	RFI Assessment	<a href="https://screening.environment.gov.za/ScreeningDownloads/AssessmentProtocols/Gazetted_General_Requirement_Assessment_Protocols.pdf">https://screening.environment.gov.za/ScreeningDownloads/AssessmentProtocols/Gazetted_General_Requirement_Assessment_Protocols.pdf</a>
1	Geotechnical Assessment	<a href="https://screening.environment.gov.za/ScreeningDownloads/AssessmentProtocols/Gazetted_General_Requirement_Assessment_Protocols.pdf">https://screening.environment.gov.za/ScreeningDownloads/AssessmentProtocols/Gazetted_General_Requirement_Assessment_Protocols.pdf</a>
1	Plant Species Assessment	<a href="https://screening.environment.gov.za/ScreeningDownloads/AssessmentProtocols/Gazetted_Plant_Species_Assessment_Protocols.pdf">https://screening.environment.gov.za/ScreeningDownloads/AssessmentProtocols/Gazetted_Plant_Species_Assessment_Protocols.pdf</a>
1	Animal Species Assessment	<a href="https://screening.environment.gov.za/ScreeningDownloads/AssessmentProtocols/Gazetted_Animal_Species_Assessment_Protocols.pdf">https://screening.environment.gov.za/ScreeningDownloads/AssessmentProtocols/Gazetted_Animal_Species_Assessment_Protocols.pdf</a>

### 3. Permitting Process



## Specialist Studies Commissioned

SPECIALIST ASSESSMENT	COMMENT
Soils and Agricultural Potential Assessment	A soils and agricultural survey will be undertaken.
Archaeological and Cultural heritage Desktop Assessment	The powerline could potentially negatively impact on heritage and archaeological resources. An Archaeological and Heritage Impact Assessment will be undertaken.
Palaeontology	The powerline could potentially negatively impact on Palaeontological resources. A Palaeontological Impact Assessment will be undertaken.
Visual Impact Assessment	The powerline could potentially negatively impact sensitive visual receptors. A Visual Impact Assessment will therefore be undertaken.
Terrestrial Biodiversity Impact Assessment	A large portion of the route falls within a CBA and NPAES focus areas. A Terrestrial Biodiversity Assessment has therefore been included in the BA process.
Freshwater Impact Assessment	The proposed route falls within an FEPA. A Freshwater Impact Assessment will therefore be undertaken.
Avifauna Impact Assessment	Due to the potential impacts on birds as a result of the Overhead Powerline, an Avifauna Assessment will be undertaken as part of the BA Process.
Social Impact Assessment	A detailed social assessment will be prepared. The social statement will be based on a desktop review and telephonic interviews with key stakeholders.
Geotechnical	A desktop Geotechnical Assessment will be undertaken as part of the BA Process.
Traffic Assessment	A Traffic Assessment and a Traffic Management Plan will be compiled as part of the BA Process

### 3. Permitting Process

## Specialist Studies NOT Commissioned

SPECIALIST ASSESSMENT	COMMENT
Geotechnical	A Detailed Geotechnical Assessment will not be undertaken as part of the BA Process as this will be undertaken during the design phase, once preferred bidder status is obtained.
RFI	A Radio Frequency Interference (RFI) Study will not be undertaken. During the previous EIA and BA processes the SKA-SA confirmed that the WEFs will have no impact on the SKA. SKA-SA as well as the South African Radio Astronomy Observatory (SARAO) will be engaged with as part of the Public Participation Process.
Civil Aviation	The Civil Aviation Authority will be included on the project stakeholder database. They will be informed of the proposed Project, and comment will be sought. An Application for the Approval of Obstacles will also be submitted to SACAA once preferred bidder status is obtained.

wsp

21

21

### 3. Permitting Process

## Competent Authority

- Section 24C(2)(a) of NEMA
  - The Minister must be identified as the CA if the activity has implications for international environmental commitments or relations
- GN 779 of 01 July 2016
  - Identifies the Minister as the CA for the consideration and processing of environmental authorisations and amendments thereto for activities related the Integrated Resource Plan (IRP) 2010 – 2030
- DFFE is therefore deemed to be the Competent Authority

wsp

22

22



## 4. Public Participation Process



### Public Participation Plan

- Site notices:
  - English and Afrikaans
- Compilation and management of I&AP Database
- Written notification:
  - Owners and occupiers on or adjacent to the proposed project site
  - Municipality Ward Councillor
  - District Municipality
  - Relevant State Departments
- Advertisement (One English and one Afrikaans in local newspaper)
- Draft Report Review for 30 days
  - WSP on request
  - Online on the WSP website
  - WSP will confirm with local Public Libraries as to whether they are open and able to accept documents for public review
- No provision has been made for public or focus group meetings due to current COVID-19 restrictions.

23

23

## 5. Timeframes



- Basic Assessment
  - Falls within Central Strategic Transmission Corridor (GN 113)
  - Falls within the Komsberg REDZ (GN 114)
  - Authority decision making timeframe is 57 days
- Updated EMPr and Final layout
  - Authority decision making timeframe is 30 days
- Part 1 Amendment (Karreebosch and Brandvalley)
  - Authority decision making timeframe is 30 days
  - The Part 1 Amendment Application for the Karreebosch WEF will be submitted after the appeal period for the amended EA (expected to be received by 15 October) has ended.
- Part 2 Amendment (Rietkloof)
  - Falls within the Komsberg REDZ (GN 114)
  - Authority decision making timeframe is 57 days

24

24

## 6. Questions and Discussion



25

25

## 7. Way forward



26