

# INTEGRATED ENVIRONMENTAL AUTHORISATION PROCESS FOR TWO PROPOSED EXPANSION PROJECTS AT KUDUMANE MANGANESE RESOURCES MINE NEAR HOTAZEL, NORTHERN CAPE PROVINCE

DMRE Reference Numbers: NC 30/5/1/2/2/268 MR & NC 30/5/1/2/2/10053 MR

SRK Reference Number: 574378

## INVITATION TO REGISTER AS AN INTERESTED AND AFFECTED PARTY AND ANNOUNCEMENT OF THE AVAILABILITY OF THE DRAFT SCOPING REPORTS FOR PUBLIC REVIEW

Kudumane Manganese Resources (Pty) Ltd (KMR) operates the KMR manganese mine (the Mine), near Hotazel in the Northern Cape. The Mine comprises various portions of Farm York A 279 (York), Farm Telele 312 (Telele), Farm Kipling 271 (Kipling), Farm Devon 277 (Devon) and Farm Hotazel 280 (Hotazel). KMR is authorised to mine and process manganese ore at these properties in terms of two Mining Rights (MRs) (MR 268 & MR 10053), two approved Environmental Management Programmes (EMPrs) of 2010 and 2014 respectively, a Water Use Licence (WUL) obtained in 2016 and a WUL amendment authorised in 2018.

Notice is hereby given of KMR's intention to expand its existing operations by constructing additional mining related infrastructure and amending certain mining related activities and infrastructure to improve the mine's production capacity. KMR proposes to undertake the following mining activities:

- The development of a new opencast pit mine on Kipling to mine the near surface manganese resource;
- Expansion of the existing Hotazel and York opencast mining operations;
- Development of two attenuation dams on the Ga-Mogara River, to allow for the expansion of the York and Hotazel Pits;
- Various supporting infrastructure including waste rock dumps and ore stockpiles;
- Additional crushing and screening operations at Kipling;
- Expansion of the rail loop to make provision for additional waste rock dump; and
- Various ancillary infrastructure, such as offices, haul roads, water and electricity reticulation infrastructure, weighbridge, sewage treatment facilities; pollution control dams, waste management facilities, conveyor systems, clinic, etc.

Before KMR can commence with the proposed expansion activities, the mine is required to obtain the necessary authorisations from the Department of Mineral Resources and Energy (DMRE) in respect of the listed activities that will be triggered by the proposed projects in terms of the National Environmental Management Act (Act No. 107 of 1998) (NEMA) and National Environmental Management: Waste Act (Act No. 36 of 1998) (NEM: WA). Due to the nature and extent of the proposed activities associated with the KMR Expansion Projects, a full Scoping and Environmental Impact Assessment (EIA) process will be required as part of the integrated environmental authorisation (EA) process.

In addition to the integrated EA requirements, KMR will also need to apply for a WUL through the Department of Water and Sanitation in respect of the following water uses that will be associated with the proposed project in terms of the National Water Act (Act No. 36 of 1998) (NWA):

- Section 21(a) → Taking water from a water resource
- Section 21(b) → Storing water
- Section 21(c) → Impeding or diverting the flow of water in a watercourse
- Section 21(i) → Altering the beds, banks, course or characteristics of a water course
- Section 21(g) → Disposing of waste in a manner which may detrimentally impact on a water resource
- Section 21(j) → Removing, discharging or disposing of water found underground if it is necessary for the efficient continuation of an activity or for the safety of people

KMR appointed SRK Consulting (South Africa) (Pty) Ltd (SRK) as the independent environmental assessment practitioner to manage and facilitate the integrated EA process, amend the approved EMPrs and undertake the associated public participation process in accordance with NEMA, NEM: WA, NWA and MPRDA.

The Draft Scoping Reports will be made available for public comment for a period of thirty (30) calendar days as from 30 August to 29 September 2021, at the following public places:

Public Place	Locality	Tel No
Joe Morolong Local Municipality	D320 Cardington Road, Churchill Village, Kuruman, 8460	053 773 9300
John Taolo Gaetsewe District Municipality	4 Federale Mynbou Street, Kuruman, 8460	053 712 8700
Hotazel Public Library	8 Bamford Ave, Hotazel, 8490	053 742 2000
Kathu Public Library	1 Hendrik Van Eck Street, Kathu 8446	0537232261
SRK's Website	<a href="https://docs.srk.co.za/en/za-kmr-expansion-project">https://docs.srk.co.za/en/za-kmr-expansion-project</a>	011 441 1111/27

In terms of the Water Use License application process, I&APs are hereby notified that should you wish to submit written comments or objections to the proposed projects and associated water uses you have 60 days to do so. Please submit such comments/objections to SRK by 30 October 2021 at the details provided above.

Interested and affected parties are invited to register and direct any comments or queries regarding the proposed project to:

### SRK Consulting

Att: Karabo Maruapula, Public Participation Office, P.O. Box 55291, Northlands, 2116,

Tel: (011) 441 1111 / Fax: 086 230 1462 / Email: [KMaruapula@srk.co.za](mailto:KMaruapula@srk.co.za)

**TIRO E E KOPANTSWENG YA THEBOLELO YA GO DIRA DITIRO MO TIKOLOGONG YA DIPOROJEKE TSE PEDI TSA KATOLOSO E E KOPELWANG KWA MOPEPONG WA KUDUMANE MANGANESE RESOURCES GAUFI LE HOTAZEL, POROFENSE YA KAPA BOKONE**

Nomoro ya Referense ya DMRE: NC 30/5/1/2/2/268 MR & NC 30/5/1/2/2/10053 MR

Nomoro ya Referense ya SKR:: 574378

**TALETSO YA GO KWADISA JAAKA MOTHO YO O NANG LE KGATLHEGO LE KITSISO YA GO NNA GONE GA TERAFOTE YA DIPEGO TSA TSHEKATSHEKO GORE E SEKASEKIWE KE MORAFE**

Kudumane Manganese Resources (Pty) Ltd (KMR) e tsamaisa moepo wa manganese wa KMR (Moepo) o o gaufi le Hotazel kwa Bokoone Bophirima. Moepo ono o na le dikarolo tse di farologaneng tsa Polasi ya York A 279 (York), Polasi ya Telele 312 (Telele), Polasi ya Kipling 271 (Kipling), Polasi Devon 277 (Devon) le Polasi ya Hotazel 280 (Hotazel). KMR e reboletswe go epa le go dirisa manya a manganese kwa mafelong ano go ya ka Ditlelelo tsa go Batla Dimenerala (Mining Rights [MRs]) (MR 268 & MR 10053), Dithulaganyo tsa Taolo ya Tikologo tse pedi (Environmental Management Programmes [EMPrs]) tsa 2010 le 2014 ka go tshomagana, le Laesene ya Tiriso ya Metsi (Water Use Licence (WUL)) e e bonweng ka 2016 le WUL e e fetotsweng e e reboletsweng ka 2018.

Go itsisiwa fano gore ka boikaelelo jwa KMR go tshala ditiro tsa yone tse di ntseng di le teng ka go aga dikago tse dingwe gape tse di amanang le go fetola ditiro dingwe tse di amanang le go epa le dikago le ditsela go tokafatsa bokgoni jwa moepo. Boikaelelo jwa KMR ke go dira ditiro tse di latelang tsa go epa:

- Go epiwa ga mosima o mongwe o o godimo ga lefatshe mo Kipling go epa ditswammung tsa manganese tse di fa godimo ga lefatshe;
- Go atolosiwa ga ditiro tse di ntseng di le teng tsa Hotazel le York tsa moepo o o fa godimo ga lefatshe;
- Go epiwa ga matamo a a thibelang morwalela mo kgaolong ya Noka ya Ga-Mogara gore go kgonwe go atolosiwa Mesima ya York le Hotazel;
- Dikago tse di farologaneng tsa tshegetso gammogo le bolatlhelo jwa matlapa le bokokoanyetso jwa manya.;
- Ditiro tse dingwe tsa go thubaganya le go tlhatlhoba tsa kwa Kipling;
- Go atolosiwa ga lupu ya seporo go rulanyetsa bolatlhelo jo bongwe jwa matlapa; le
- Dikago tse dingwe tse di farologaneng tsa thuso, tse di tshwanang le ditsela tse dikoloi tse dikgolo, dikago tsa mafaratlhatlha a metsi le motlakase, lefelo la go lekangwa ga bokete jwa dikoloi, dikago tsa go phepafadiwa ga leswe le le ntshiwang; matamo a taolo ya kgotlelo, dikago tsa taolo ya leswe, ditsamaiso tsa khonbeyara, tliiniki, jalo jalo.

Pele ga KMR e ka simolola ka ditiro tsa katoloso e e kopelwang, moepo o tshokwa gore o nne le dithebolelo tsa Department of Mineral Resources and Energy (DMRE) malebana le ditiro tse di kwadilweng tse di tla simololwang ke diporojeke e e kopelwang go ya ka National Environmental Management Act (Act No. 107 wa 1998) (NEMA) le Taolo ya Naga ya Tikologo: Molao wa Dilatlhiwa (Water Waste Act No. 59 wa 1998 (NEM: WA). Ka baka la mofuta le bogolo jwa ditiro tse di kopelwang tse di amanang le Diporojeke tsa Katoloso le tsa KPM, go tlile go tlokega tiro ka botlalo ya Tshekatsheko le Kamego ya Tikologo (Environmentl Impact Assess (EIA) e le karolo ya tiro ya thebolelo e e kopantsweng ya tikologo (integrated environment authorisation (EA).

Mo godimo ga dibatliwa tsa EA e e kopantsweng, KMR e tla tshwanela gape go dira kopo wa WUL ka Lefapha la Metsi le Ntsholeswe malebana le ditiro tsa metsi tse di tla amanngwang le porojeke e e kopelwang mabapi le Molato wa Naga wa Metsi (Molao No. 36 wa 1998) (NWA):

- Karolo 21(a) → Go ga metsi kwa motswedeng wa metsi
- Karolo 21(b) → Polokelo ya metsi
- Karolo 21 (c) → Go thibela kgotsa go faposa kelelo ya metsi mo moseleng wa metse.
- Karolo (21(i) → Go fetola mokgatšha, masi, meedi kgotsa dipopego tsa mesele ya metsi
- Karolo 21(g) → Go latlha ga metsi ka tsela e go ka nnang ga ama motswedi wa metsi ka tsela e e sa siamang
- Karolo 21(g) → Go tlosa, go ntsha kgotsa go latlha metsi a a bonweng kafa tlase ga lefatshe fa go tlokega gore tiro e kgone go tswaledisiwa sentle kgotsa gore batho ba sireletsege

KMR e tshomile SRK Consulting (South Africa) (Pty) Ltd (SRK) jaaka mosekaseki wa tikologo yo o ikemetseng ka nosi gore e laole le go rulanyetsa thebolelo e e kopantsweng ya go dira tiro ya EA, go fetola di-EMPr tse di dumeletsweng le go dira tiro e e tsamaisanang le yone ya go tsaya karolo ga morafe go ya ka NEMA, NEM WA, NWA and MPRDA.

Terafote ya Dipego tsa Tshekatsheko di tlile go nna teng gore morafe o tshwaele mo go tsone mo malatsing a khalentara a le masometharo (30) go simolola ka 30 Phatwe go ya go 29 Lwetse 2021 kwa mafelong a a latelang

Lefelo la Botlhe	Lefelo	Nomoro Ya Mogala:
Mmasepala wa Selegae wa Joe Morolong .	D320 Cardington Road, Churchill Village, Kuruman, 8460	053 773 9300
Mmasepala wa Kgaolo wa John Taolo Gaetsewe	4 Federale Mynbou Street, Kuruman, 8460	053 712 8700
Hotazel Public Library	8 Bamford Ave, Hotazel, 8490	053 742 2000
Laeborari ya Morafe ya Kathu	1 Hendrik Van Eck Street, Kathu 8446	0537232261
Webosaete ya SRK	<a href="https://docs.srk.co.za/en/za-kmr-expansion-project">https://docs.srk.co.za/en/za-kmr-expansion-project</a>	011 441 1111/27

Go ya ka tiro ya kopo ya Laesense ya Tiriso ya Metsi, go-I&AP ba itsisiwe fano gore fa o ka batla go tsenya ditshwaelo tse o di kwadileng le tse o gananang le tsone mo diporojekeng tse di kopelwang tse di tsamaisanang le ditiriso tsa metsi o na le malatsi a le 60 a go dira jalo. Tsweetswee romela ditshwaelo/dikganano tseo kwa SKR ka 30 Diphaleane 2021 kwa mafelong a dintlha tse di neilweng fa godimo.

Batho ba ba nang le kgatlhego le ba ba amegang ba lalediwa go kwadisa le go isa ditshwaelo dipe tsa bone kgotsa dingongoreko mabapi le porojeke e e kopelwang kwa:

**SRK Consulting**

**Att:** Karabo Maruapula, Public Participation Office, P.O. Box 55291, Northlands, 2116,

**Mog:** (011) 441 1111 / **Fax:** 086 230 1462 / **Email:** [KMaruapula@srk.co.za](mailto:KMaruapula@srk.co.za)

# Background Information Document

## INTEGRATED ENVIRONMENTAL AUTHORISATION PROCESS FOR TWO PROPOSED EXPANSION PROJECTS AT KUDUMANE MANGANESE RESOURCES MINE NEAR HOTAZEL, NORTHERN CAPE PROVINCE



KUDUMANE MANGANESE RESOURCES  
(PTY) LTD (KMR)  
**KMR MANGANESE MINE EXPANSION  
PROJECTS**  
DMRE Reference Numbers NC 30/5/1/2/2/268 MR &  
NC/ 30/5/1/2/2/10053 MR

### PURPOSE OF DOCUMENT

Provides interested and affected parties with information about the proposed amendment project and its components, the regulatory process and how to become involved in the process.

### Invitation to comment and register as an Interested and Affected Party

You are invited to register as an interested and affected party (I&AP) for the KMR Expansion Project's integrated environmental authorisation process, comment or raise any issues of concern. Please complete the enclosed Registration and Comment Form and return to:

**KARABO MARUAPULA**  
SRK Consulting  
Public Participation Office

P. O. Box 55291  
Northlands  
2116

### CONTACT DETAILS:

Tel: (011) 441 1111  
Fax: 086 230 1462  
E-mail:  
KMaruapula@srk.co.za

## Introduction and background

Kudumane Manganese Resources (Pty) Ltd (KMR) is an established opencast manganese mine located approximately 3 km south-west of the town of Hotazel in the John Taolo Gaetsewe District Municipality in the Northern Cape Province. KMR has two mining rights; one in respect of the farms York A279 and Telele 312 (Mining Right Ref: NC/30/5/1/2/2/0268 MR) and one over the farms Devon 277, Hotazel 280 and Kipling 271 (Mining Right NC/ 30/5/1/2/2/10053 MR).

KMR intends to expand its current operations, in order to extend the life of its mine and improve production capacity, through the inclusion of the following mining related activities and infrastructure within its approved mining right areas:

- Extension of the existing York and Hotazel Pits;
- Development of two in-stream attenuation dams within the Ga-Mogara River to allow for the expansion of the York and Hotazel Pits; and
- Development of new opencast pits on the farm Kipling 271.

The main expansion activities and infrastructure listed above will require the development and utilisation of the following secondary infrastructure and activities:

- Expansion of waste rock dumps;
- Expansion of ore stockpiles;
- Development of new roads and extension of existing roads;
- Construction on new Pollution Control Dams (PCDs);
- Storage and reticulation of water via tanks and pipelines;
- Development and expansion of sewerage treatment plants;
- Development of supporting infrastructure such as admin offices ancillary infrastructure;
- Waste and fuel storage areas;
- Development of a contractor's camp; and
- Extension of existing powerlines.

Refer to Table 1 for the proposed projects activities and infrastructure and Figure 1 for the location of the proposed projects in relation to KMR's respective Mining Right areas.

Before KMR can commence with the proposed expansion activities, the mine is required to obtain the necessary authorisations from the Department of Mineral Resources and Energy (DMRE) in respect of the listed activities that will be triggered by the proposed project in terms of the National Environmental Management Act (Act No. 107 of 1998) (NEMA) and National Environmental Management: Waste Act (Act No. 36 of 1998) (NEM:WA).

SRK Consulting (South Africa) (Pty) Ltd (SRK) was appointed by KMR as the independent environmental assessment practitioner (EAP) to manage and facilitate the integrated environmental authorisation (EA) process, amend the approved Environmental Management Programmes (EMPrs) and undertake the associated public participation process in accordance with NEMA, NEM:WA, NWA and MPRDA.

# KMR Expansion Projects

**Table 1: The proposed project activities and infrastructure in terms of KMR's two Mining Rights**

Project Title:	Proposed expansion project relating to Mining Right: NC/30/5/1/2/2/0268 MR	Proposed expansion project relating to Mining Right: NC/ 30/5/1/2/2/10053 MR
<b>Location:</b>	<ul style="list-style-type: none"> <li>• Farm York A 279</li> <li>• Farm Telele 312</li> </ul>	<ul style="list-style-type: none"> <li>• Farm Devon 277</li> <li>• Farm Hotazel 280</li> <li>• Farm Kipling 271</li> </ul>
<b>Project Activities and Infrastructure required</b>	<p>Farm York A 279</p> <ul style="list-style-type: none"> <li>• Expansion of the York Pit</li> <li>• Expansion of the rail loop (approx. 2.5 km)</li> <li>• Expansion of waste rock area</li> <li>• Extension of the existing haul road</li> <li>• Establishment of Truck Parking Area</li> <li>• Relocation of access control building</li> <li>• Expansion of mine clinic</li> <li>• Expand the parking area for staff and visitors</li> <li>• Relocate office block</li> <li>• Expansion of General and hazardous waste storage area</li> <li>• Expansion of Salvage yard</li> <li>• Upgrade of sewage treatment plant</li> <li>• Construction and development of new PCDs</li> <li>• Expansion of Manganese stockpile</li> <li>• Development of Attenuation dam within the Ga-Mogara River</li> </ul> <p>Farm Telele 312</p> <ul style="list-style-type: none"> <li>• Establishment of abstraction boreholes</li> <li>• Establishment of a water pipeline</li> </ul>	<p>Farm Devon 277</p> <ul style="list-style-type: none"> <li>• Rehabilitation activities at the existing pit</li> <li>• Establishment of monitoring boreholes</li> <li>• Establishment of explosive magazine</li> </ul> <p>Hotazel 280</p> <ul style="list-style-type: none"> <li>• Expansion of the Hotazel Pit</li> <li>• Relocation of Admin offices</li> <li>• Rehabilitation of existing road around the new Waste Rock Dump area</li> <li>• Development of:</li> <li>• Run of Mine (RoM) Stockpile</li> <li>• Waste Rock Dump North, South and East</li> <li>• Attenuation dam within the Ga-Mogara River</li> <li>• Potable water tank</li> <li>• Sewage Treatment Plant (Lilliput plant)</li> </ul> <p>Kipling 271</p> <ul style="list-style-type: none"> <li>• New opencast pits</li> <li>• Waste rock dump</li> <li>• RoM Stockpiles</li> <li>• Haul road (approx. 1.2km)</li> <li>• Sewerage Treatment Facility</li> <li>• Potable water tank</li> <li>• Admin Offices</li> <li>• Diesel bay and fuel storage</li> <li>• Waste storage facility</li> <li>• Crushing facility</li> <li>• Pollution control dam</li> <li>• Ancillary infrastructure (e.g. Weighbridge)</li> <li>• Construction and upgrading of access gravel road to Kipling offices</li> <li>• Potable water pipeline from York to Hotazel to Kipling</li> <li>• Bridge associated with diversion of road over the river</li> <li>• Powerlines and associated infrastructure</li> </ul>

The KMR mining operations commenced in June 2013 under the Mining Right NC/30/5/1/2/2/0268 MR covering the farms York A 279 and Telele 312. The initial operation included the following mining related infrastructure:

- An opencast and future underground mining operation;
- Associated residue handling and disposal facilities;
- A crushing and screening plant;
- Rail and road infrastructure;
- Water and electrical reticulation infrastructure; and
- Various other supporting infrastructure and services, such as offices, waste storage areas and sewage treatment facilities.

In 2015, the mine expanded its operation through the application of another mining right (Mining Right Ref: NC/30/5/1/2/2/10053 MR) over the farms Devon 277, Hotazel 280 and Kipling 271. Under this mining right, the following main mining related activities and infrastructure were approved:

- Mining and removal of manganese ore from a historical pit and tailings storage facility (TSF) on the farm Devon 277;
- Mining and removal of manganese ore from an historical pit on the farm Hotazel 280, along with the establishment of haul road, utilisation of existing roads including the establishment and utilisation of a conveyor system between the farms Hotazel 280 and York A 279; and
- Potential future mining on the farm Kipling 271.

The KMR mining operation therefore operates under two EMPs as approved by the Northern Cape Province Department of Environment and Nature Conservation (DENC) in June 2013 and October 2015 respectively. KMR also has a Water Use Licence (WUL) that was issued in 2016 by the Department of Water and Sanitation (DWS) and an amended WUL authorised in 2018.



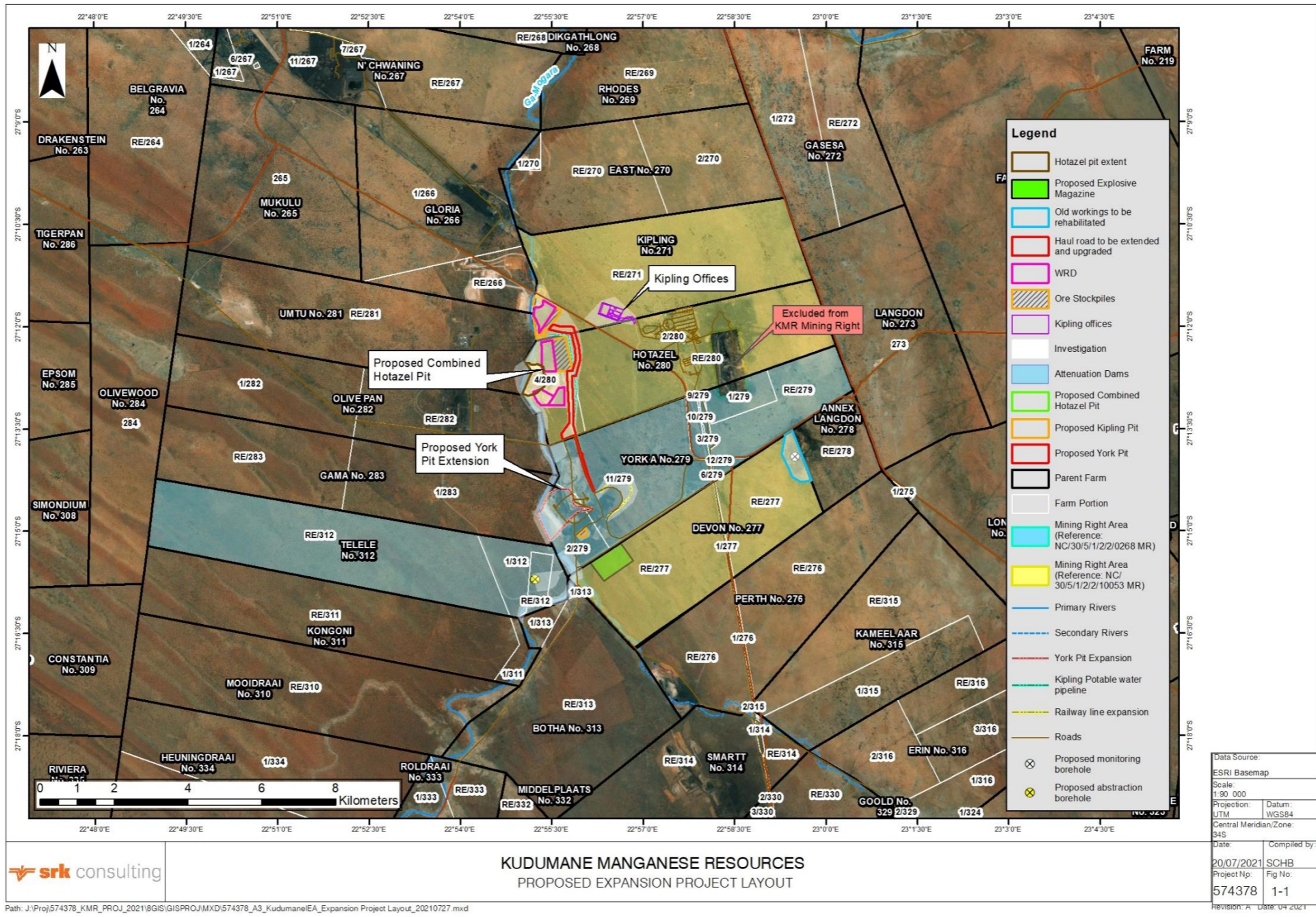


Figure 1: Locality map of the key infrastructure for the proposed projects in relation to the two KMR's Mining Right are





## During Scoping phase

Issues for investigation during the impact assessment phase are identified and the scope of specialist studies defined. This information will be compiled into a Draft Scoping Report that will be available for public comment for a 30 calendar day period. After the public commenting period the report will be updated to address any comments received where after it will be submitted to the DMRE for consideration.

## During EIA phase

Potential impacts are determined and management measures are proposed to mitigate negative impacts and enhance positive impacts. The EIA, including all specialist reports and associated EMPr will also be made available for public comment for a 30 calendar day period, then updated with comments received and submitted to the DMRE for decision-making.

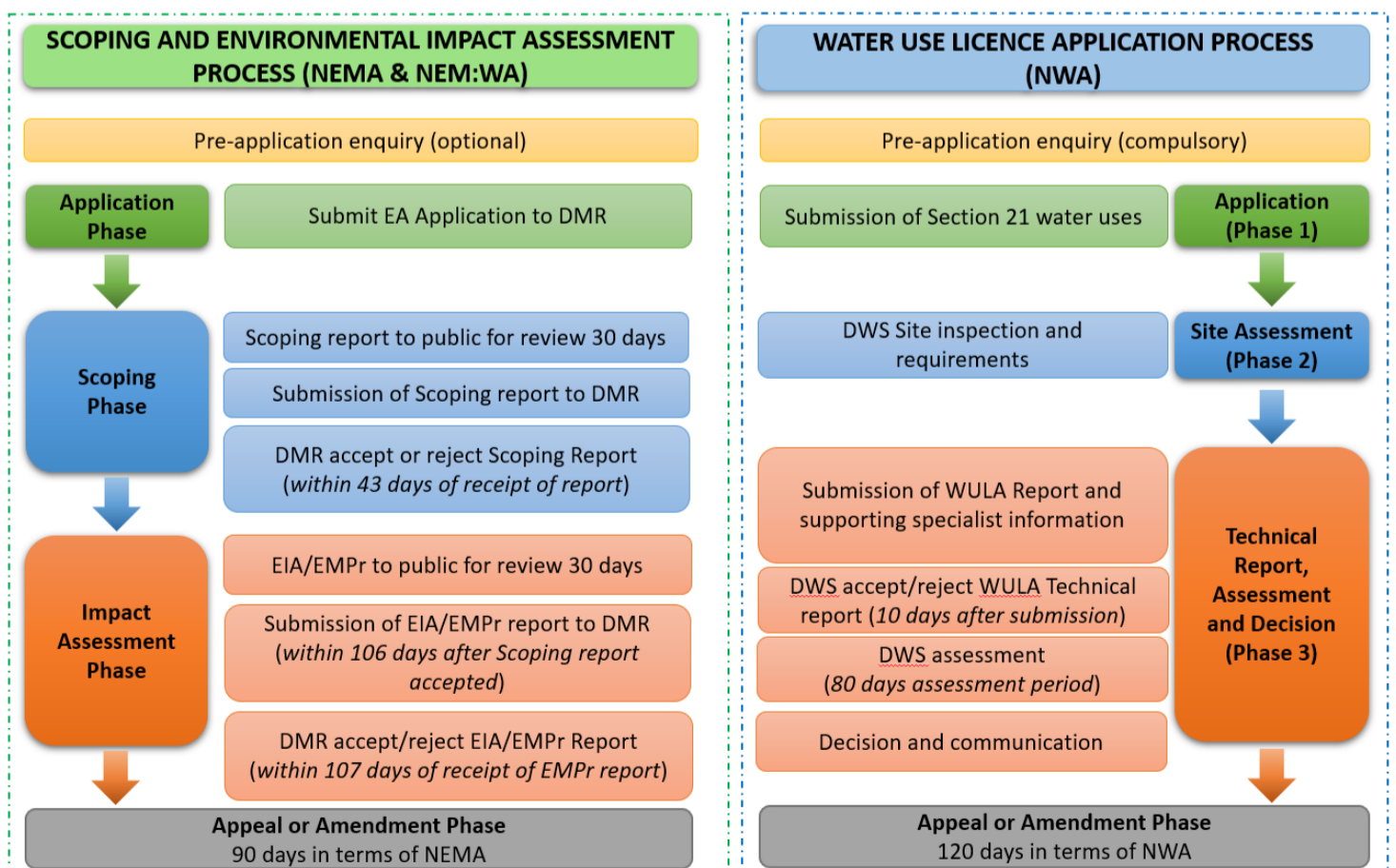
## Integrated Environmental Authorisation

Before KMR may commence with the development of the additional mining related activities and the expansion of the mining operation, the following environmental authorisations processes and licences need to be undertaken in accordance with the relevant national legislation:

- A Scoping and Environmental Impact Assessment (EIA) for any project related Listed Activities stipulated in the National Environmental Management Act (Act No. 107 of 1998) (NEMA) and the National Environmental Management: Waste Act (Act No. 59 of 2008) (NEM:WA). The two existing Environmental Management Programmes (EMPrs) will be amended in terms of the Mineral and Petroleum Resources Development Act (Act No. 28 of 2002) (MPRDA). The Scoping, EIA and amended EMPr will be submitted to Northern Cape Province's DMRE for approval; and
- A new Water Use Licence Application (WULA) for any project related water uses under the National Water Act (Act No. 36 of 1998) (NWA), for submission and approval from the Department of Water and Sanitation (DWS).

As part of the integrated environmental authorisation processes, SRK will conduct the associated stakeholder engagement process as required under NEMA, NEM:WA, NWA and MPRDA.

The authorisation processes will run concurrently and require the involvement of stakeholders. Therefore, a single integrated public participation process will be undertaken in compliance with all legislative requirements. The integrated environmental authorisation process, timeframes and associated public participation process are illustrated in the graphic below.



# KMR Expansion Projects

## PROJECT RELATED LISTED ACTIVITIES AND WATER USES

A summary of the potential environmental and waste listed activities and water uses, associated with the expansion projects, which will be applied for in terms of the mentioned legislation is provided in the table below. Activities relating to Mining Right 268 is indicated in **blue**, activities relating to Mining Right 10053 is indicated in **pink** and activities that apply to both Mining Rights are indicated in **green**.

<b>NEMA Environmental Authorisation - Scoping and EIA Process</b>	
<b>Listing notice 1 (GN R 983) Activity and description:</b>	<b>Listing notice 2 (GN R 984) Activity and description:</b>
<ul style="list-style-type: none"> <li>9 Bulk transportation of water or storm water via pipeline;</li> <li>10 Bulk transportation of sewage, effluent, process water, wastewater, return water, industrial discharge or slimes, via pipeline;</li> <li>11 Transmission and distribution of electricity outside urban areas with a capacity of more than 33 but less than 275 kilovolts;</li> <li>12 The development of dams with a physical footprint of 100 square metres or more, within 32m of a watercourse;</li> <li>14 The development of facilities or infrastructure for the storage, or for the storage and handling, of a dangerous good, where such storage occurs in containers with a combined capacity of 80 m<sup>3</sup> but not exceeding 500 m<sup>3</sup>;</li> <li>19 The infilling or depositing of any material of more than 10 m<sup>3</sup> into, or the dredging, excavation, removal or moving of soil, sand, shells, shell grit, pebbles or rock of more than 10 m<sup>3</sup> from a watercourse;</li> <li>21D Any activity including the operation of that activity which requires an amendment or variation to a right or permit in terms of Section 102 of the Mineral and Petroleum Resources Development Act, as well as any other applicable activity as contained in this Listing Notice or in Listing Notice 3 of 2014, required for such amendment.</li> <li>24 The development of a road with a reserve wider than 13,5 meters, or where no reserve exists where the road is wider than 8 metres;</li> <li>25 Facilities or infrastructure for the treatment of effluent, wastewater or sewage with a daily throughput capacity of more than 2000m<sup>3</sup> but less than 15000m<sup>3</sup>;</li> <li>27 The clearance of an area of 1 ha or more, but less than 20 ha of indigenous vegetation;</li> <li>34 The expansion of existing facilities or infrastructure which will result in the need for a permit or licence or an amended permit or licence in terms of national or provincial legislation governing the release of emissions, effluent or pollution;</li> <li>45 The expansion of infrastructure for the bulk transportation of water or storm water, via pipeline;</li> <li>46 The expansion and related operation of infrastructure for the bulk transportation of sewage, effluent, process water, waste water, return water, industrial discharge or slimes, via pipelines;</li> <li>48 The expansion of infrastructure or structures where the footprint is expanded by 100 square metres or more; within a watercourse;</li> <li>56 Widening of a road by more than 6 metres, or the lengthening of a road by more than 1 kilometre;</li> <li>64 The expansion of railway lines, stations or shunting yards where there will be an increased development footprint.</li> </ul>	<ul style="list-style-type: none"> <li>6 Facilities or infrastructure which requires a permit or licence or an amended permit or licence in terms of national or provincial legislation governing the generation or release of emissions, pollution or effluent;</li> <li>15 The clearance of an area of 20 ha or more of indigenous vegetation;</li> <li>16 The development of a dam where the highest part of the dam wall, as measured from the outside toe of the wall to the highest part of the wall, is 5 metres or higher or where the highwater mark of the dam covers an area of 10 hectares or more;</li> <li>17 Any activity which requires a mining right as contemplated in the MPRDA;</li> <li>27 The development of a road with a reserve wider than 30 metres; or catering for more than one lane of traffic in both directions.</li> </ul>
<b>NEM:WA – Waste Management Licence (Category A GN R 921)</b>	<b>NEM:WA – Waste Management Licence (Category B GN R 921)</b>
<ul style="list-style-type: none"> <li>2 The sorting, shredding, grinding, crushing, screening or bailing of general waste at a facility that has an operational area in excess of 1000m<sup>2</sup>.</li> <li>3 The recycling of general waste at a facility that has an operational area in excess of 500m<sup>2</sup>, excluding recycling that takes place as an integral part of an internal manufacturing process within the same premises.</li> <li>4 The recycling of hazardous waste in excess of 500kg but less than 1 ton per day calculated as a monthly average, excluding recycling that takes place as an integral part of an internal manufacturing process within the same premises.</li> </ul>	<ul style="list-style-type: none"> <li>2 The reuse or recycling of hazardous waste in excess of 1 ton per day, excluding reuse or recycling that takes place as an integral part of an internal manufacturing process within the same premises.</li> <li>10 The construction of a facility for a waste management activity listed in Category B of this Schedule (not in isolation to associated waste management activity).</li> <li>11 The establishment or reclamation of a residue stockpile or residue deposit resulting from activities which requires a mining right, exploration right or production right in terms of MPRDA.</li> </ul>
<b>NWA- Section 21 Water Use Licence</b>	
<p>Requiring a Water Use Licence Application</p> <ul style="list-style-type: none"> <li>(a) Taking water from a water resource</li> <li>(b) Storing water</li> <li>(c) Impeding or diverting the flow of water in a watercourse</li> <li>(i) Altering the beds, banks, course or characteristics of a water course</li> <li>(g) Disposing of waste in a manner which may detrimentally impact on a water resource</li> <li>(j) Removing, discharging or disposing of water found underground if it is necessary for the efficient continuation of an activity or for the safety of people</li> </ul>	

### SPECIALIST STUDIES

The following studies will be undertaken as part of the integrated EA:

- Closure and liability
- Blasting and vibration
- Heritage
- Freshwater
- Socio-economic
- Surface water
- Palaeontology
- Terrestrial biodiversity
- Noise
- Air quality
- Traffic
- Soils, land use and land capability

## HOW YOU CAN BE INVOLVED?



The public participation process, undertaken as part of the environmental authorisation process, is conducted in terms of NEMA's EIA Regulations of 2014 (as amended) which provides clear guidelines for stakeholder engagement during an environmental authorisation process.

The process offers stakeholders the opportunity to be informed about the project, raise comments or queries and make suggestions for enhanced project benefits. The technical specialists and project team will evaluate relevant issues and suggestions during the EIA process.

## Public Participation

You are receiving this document as we have identified you as a potential interested and affected party (I&AP) for this project. If you wish to remain an I&AP for this new authorisation process, you are invited to register as a stakeholder (registration form attached) and comment on the proposed project or raise any issue of concern. Please also contact us should you require more information on the proposed project or the associated environmental authorisation process.

## Availability of the Scoping Reports for Public Comment

As part of the integrated environmental authorisation process associated with the KMR Expansion Projects, the required Draft Scoping Reports (DSRs) will be made available for public comment. It is anticipated that the DSRs will be available from 24 August to 23 September 2021. The DSRs describe the proposed projects and related activities, any feasible and reasonable alternatives that were considered to date, a description of the property and the environment that may be affected and the manner in which the biological, social, economic and cultural aspects of the environment may potentially be impacted by the proposed projects. The DSRs also includes the Plan of Study for the EIA (next phase), specifying the methodology to be used to assess the potential impacts, and the specialists investigations that are required.

**The DSRs will be available for public comment for a period of thirty (30) calendar days from 24 August to 23 September 2021.**

The DSR will be available in PDF format on the SRK website (<https://docs.srk.co.za/en/za-kmr-expansion-project>), and the following public places:

### Public places where the Draft Scoping Report will be made available

Public place	Locality	Tel no
Joe Morolong Local Municipality	D320 Cardington Road, Churchill Village, Kuruman, 8460	053 773 9300
John Taolo Gaetsewe District Municipality	4 Federale Mynbou Street, Kuruman, 8460	053 712 8700
Hotazel Public Library	8 Bamford Ave, Hotazel, 8490	053 742 2000
Kathu Public Library	1 Hendrik Van Eck Street, Kathu8446	0537232261

In terms of the WULA process, I&APs are hereby notified that should you wish to submit written comments or objections on the proposed projects and associated water uses you have 60 days to do so. Please submit such comments/objections to SRK by 23 October 2021 at the details provided above.

You are welcome to comment on the project, BID and/or DSRs by:

- Completing the enclosed Registration and Comment Form and submitting it to the public participation office;
- Writing a letter or additional written submission by mail, email or fax;
- Attending stakeholder meetings during the EIA Phase of the project; and/or
- Contacting the SRK public participation office.

## CONTACT US

Should you have any questions, need more information, or wish to raise issues of concern or suggestions, please contact SRK's Public Participation Office

**Karabo Maruapula**  
Public Participation Office  
**SRK Consulting**

**Tel:** (011) 441 1111 / **Fax:** 086 230 1462

**Email:** [KMaruapula@srk.co.za](mailto:KMaruapula@srk.co.za)

 **srk consulting**





October 2021

Dear Stakeholder

## Integrated environmental authorisation process for two proposed expansion projects at Kudumane Manganese Resources Mine, near Hotazel, Northern Cape Province

DMRE Reference Numbers: NC 30/5/1/2/2/268 MR & NC 30/5/1/2/2/10053 MR

Information provided through this project announcement letter:

- **Availability of the Draft Environmental Impact Assessment for comment**
- **Invitation to register as an Interested and Affected Party (I&AP)**
- **Next steps in the integrated Environmental Authorisation (EA) process**

Kudumane Manganese Resources (Pty) Ltd (KMR) operates the KMR manganese mine (the Mine), near Hotazel in the Northern Cape. The Mine comprises various portions of Farm York A 279 (York), Farm Telele 312 (Telele), Farm Kipling 271 (Kipling), Farm Devon 277 (Devon) and Farm Hotazel 280 (Hotazel). KMR has two mining rights; one in respect of the farms York A279 and Telele 312 (Mining Right Ref: NC/30/5/1/2/2/0268 MR) and one over the farms Devon 277, Hotazel 280 and Kipling 271 (Mining Right NC/ 30/5/1/2/2/10053 MR), two approved Environmental Management Programmes (EMPrs) of 2010 and 2014 respectively, a Water Use Licence (WUL) obtained in 2016 and a WUL amendment authorised in 2018.

KMR intends to expand its current operations, in order to extend the life of its mine and improve production capacity, through the inclusion of the following mining related activities and infrastructure within its approved mining right areas:

- Extension of the existing York and Hotazel Pits;
- Development of two in-stream attenuation dams within the Ga-Mogara River to allow for the expansion of the York and Hotazel Pits; and
- Development of new opencast pits on the farm Kipling 271.

The main expansion activities and infrastructure listed above will require the development and utilisation of the following secondary infrastructure and activities:

- Expansion of waste rock dumps;
- Expansion of ore stockpiles;
- Development of new roads and extension of existing roads;
- Construction on new Pollution Control Dams (PCDs);
- Storage and reticulation of water via tanks and pipelines;
- Development and expansion of sewerage treatment plants;
- Development of supporting infrastructure such as admin offices ancillary infrastructure;
- Waste and fuel storage areas;
- Development of a contractor's camp; and
- Extension of existing powerlines.

Partners R Armstrong, JS Bartels, CM Bauman, N Brien, JM Brown, LSE Coetser, CD Dalglish, BM Engelsman, R Gardiner, M Hinsch, SG Jones, W Jordaan, WC Joughin, DA Kilian, F Lake, JA Lake, NG Macfarlane, V Maharaj, I Mahomed, HAC Meintjes, MJ Morris, DH Mossop, GP Nel, VS Reddy, S Reuther, PJ Shepherd, T Shepherd, MJ Sim, VM Simposya, JS Stiff, M van Huyssteen, AT van Zyl, MD Wanless, CJ Wessels, ML Wertz, A Wood

Directors AJ Barrett, CD Dalglish, WC Joughin, V Maharaj, VS Reddy, T Shepherd, AT van Zyl

Associate Partners PJ Aucamp, T Claassen, SA de Villiers, IT Doku, M du Toit, LM Linzer, JI Mainama, RD O'Brien, LC Shand

Consultants JR Dixon, PrEng, GC Howell, PrEng, PhD, WC Joughin, PrEng, MSc, PR Labrum, PrEng, LM Linzer, PrSci Nat, PhD, SA Lorentz, PhD, RRW McNeill, PrTech Eng, HAC Meintjes, PrEng, MSc, PN Rosewarne, PrSci Nat, MSc, PE Schmidt, B.Comm, DipAcc, CA(SA), AA Smithen, PrEng, TR Stacey, PrEng, DSc, PJ Terbrugge, PrSci Nat, MSc, HFJ Theart, PrSci Nat, PhD, DJ Venter, PrTech Eng

#### African Offices:

Cape Town	+ 27 (0) 21 659 3060
Durban	+ 27 (0) 31 279 1200
East London	+ 27 (0) 43 748 6292
Johannesburg	+ 27 (0) 11 441 1111
Pietermaritzburg	+ 27 (0) 33 347 5069
Port Elizabeth	+ 27 (0) 41 509 4800
Pretoria	+ 27 (0) 12 361 9821
Accra	+ 23 (3) 24 485 0928
Lubumbashi	+ 243 (0) 81 999 9775

#### Group Offices:

Africa  
Asia  
Australia  
Europe  
North America  
South America



Table 1 provides information on the location of the proposed projects activities and infrastructure in relation to KMR's Mining Rights areas. Before KMR can commence with the proposed expansion activities, the mine is required to obtain the necessary authorisations from the Department of Mineral Resources and Energy (DMRE) in respect of the listed activities that will be triggered by the proposed project in terms of the National Environmental Management Act (Act No. 107 of 1998) (NEMA) and National Environmental Management: Waste Act (Act No. 36 of 1998) (NEM: WA).

**Table 1: The proposed project activities and infrastructure in terms of KMR's two Mining Rights**

Project Title:	Proposed expansion project relating to Mining Right: NC/30/5/1/2/2/0268 MR	Proposed expansion project relating to Mining Right: NC/ 30/5/1/2/2/10053 MR
<b>Location:</b>	<ul style="list-style-type: none"> <li>• Farm York A 279</li> <li>• Farm Telele 312</li> </ul>	<ul style="list-style-type: none"> <li>• Farm Devon 277</li> <li>• Farm Hotazel 280</li> <li>• Farm Kipling 271</li> </ul>
<b>Project Activities and Infrastructure required</b>	<p>Farm York A 279</p> <ul style="list-style-type: none"> <li>• Expansion of the York Pit</li> <li>• Expansion of the rail loop (approx. 2.5 km)</li> <li>• Expansion of RoM Stockpile area</li> <li>• Extension of the existing haul road</li> <li>• Establishment of Truck Parking Area</li> <li>• Relocation of access control building</li> <li>• Expansion of mine clinic</li> <li>• Expand the parking area for staff and visitors</li> <li>• Relocated office block</li> <li>• Expansion of General and hazardous waste storage area</li> <li>• Expansion of Salvage yard</li> <li>• Upgrade of sewage treatment plant</li> <li>• Construction and development of new PCDs</li> <li>• Expansion of Manganese stockpile</li> <li>• Development of Attenuation dam within the Ga-Mogara River</li> </ul> <p>Farm Telele 312</p> <ul style="list-style-type: none"> <li>• No activities will occur on Farm Telele 312 as part of the KMR Expansion Projects</li> </ul>	<p>Farm Devon 277</p> <ul style="list-style-type: none"> <li>• Rehabilitation activities at the existing pit</li> <li>• Establishment of monitoring boreholes</li> <li>• Establishment of explosive magazine</li> </ul> <p>Farm Hotazel 280</p> <ul style="list-style-type: none"> <li>• Expansion of the Hotazel Pit</li> <li>• Relocation of Admin offices</li> <li>• Rehabilitation of existing road around the new Waste Rock Dump area</li> <li>• Development of:</li> <li>• Run of Mine (RoM) Stockpile</li> <li>• Waste Rock Dump North, South and East</li> <li>• Attenuation dam within the Ga-Mogara River</li> <li>• Potable water tank</li> <li>• Sewage Treatment Plant (Lilliput plant)</li> </ul> <p>Farm Kipling 271</p> <ul style="list-style-type: none"> <li>• New opencast pits</li> <li>• Waste rock dump</li> <li>• RoM Stockpiles</li> <li>• Haul road (approx. 1.2km)</li> <li>• Sewerage Treatment Facility</li> <li>• Potable water tank</li> <li>• Admin Offices</li> <li>• Diesel bay and fuel storage</li> <li>• Waste storage facility</li> <li>• Pollution control dam</li> <li>• Ancillary infrastructure (e.g. Weighbridge)</li> <li>• Construction and upgrading of access gravel road to Kipling offices</li> <li>• Potable water pipeline from York to Hotazel to Kipling</li> <li>• Bridge associated with diversion of road over the river</li> <li>• Powerlines and associated infrastructure</li> </ul>

Due to the nature and extent of the proposed activities associated with the KMR Expansion Projects, a full Scoping and Environmental Impact Assessment (EIA) process will be required as part of the integrated environmental authorisation (EA) process.

In addition to the integrated EA requirements, KMR will also need to apply for a WUL through Department of Water and Sanitation in respect of the following water uses that will be associated with the proposed project in terms of the National Water Act (Act No. 36 of 1998) (NWA).

SRK Consulting (South Africa) (Pty) Ltd (SRK) was appointed by KMR as the independent environmental assessment practitioner (EAP) to manage and facilitate the integrated environmental authorisation (EA) process, amend the approved EMPs and undertake the associated public participation process in accordance with NEMA, NEM: WA, NWA and MPRDA.

## Availability of Background Information Document and Draft Environmental Impact Assessment Reports for public comment

The Draft Environmental Impact Assessment Reports (Draft EIAs), required as part of the proposed project's integrated EA process, will be made available for public review for a period of thirty (30) calendar days. It is anticipated that the Draft EIA Reports will be available from 13 October to 12 November 2021, at the following public places:

**Table 1: Public places where the Draft EIA Reports will be available for public review**

Public place	Locality	Tel no
Joe Morolong Local Municipality	D320 Cardington Road, Churchill Village, Kuruman, 8460	053 773 9300
John Taolo Gaetsewe District Municipality	4 Federale Mynbou Street, Kuruman, 8460	053 712 8700
Hotazel Public Library	8 Bamford Ave, Hotazel, 8490	053 742 2000
Kathu Public Library	1 Hendrik Van Eck Street, Kathu8446	053 723 2261
SRK's Website	<a href="https://docs.srk.co.za/en/za-kmr-expansion-project">https://docs.srk.co.za/en/za-kmr-expansion-project</a>	011 441 1111/27

In terms of the WULA application process, I&APs are hereby notified that should you wish to submit written comments or objections to the proposed projects and associated water uses you have 60 days to do so. Please submit such comments/objections to SRK by 12 November 2021 at the details provided.

You are welcome to comment on the project and/or Draft EIA Reports by:

- Completing the enclosed Registration and Comment Form and submitting it to the stakeholder engagement office;
- Writing a letter or additional written submission by mail, email or fax;
- Attending stakeholder meetings during the EIA Phase of the project; and/or
- Contacting the SRK public participation office.

### Invitation to register as an Interested and Affected Party

The NEMA Regulations of 2014 (as amended in 2017) require that a Register of Interested and Affected be opened for the duration of the environmental authorisation process. You are invited to register as an I&AP for this specific environmental authorisation process, comment or raise any issue or concern.

Please complete the attached Registration and Comment Form and return it to the SRK Public Participation Office (details below).

### Next steps in the Environmental Authorisation process

Following the announcement of the availability of the Draft EIA Reports for public review, all I&APs will be informed of dates of meetings where the Draft EIA/EMPr will be presented and discussed.

Should you have any questions, need more information, or wish to raise issues of concern or suggestions, please contact SRK's Public Participation Office at:

Karabo Maruapula

Public Participation Office

**SRK Consulting**

**Tel:** (011) 441 1111 / **Fax:** 086 230 1462 / **Email:** [KMaruapula@srk.co.za](mailto:KMaruapula@srk.co.za)

Thank you for your participation in this environmental authorisation process and we look forward to meeting with you in due course.



SRK Consulting - Certified Electronic Signature



574378/44475/Letter

5944-2809-6752-HOWC-08/10/2021

This signature has been printed digitally. The author has given permission for its use for this document. The details are stored in the SRK Signature Database

A handwritten signature in black ink, appearing to read 'Selma Nel', written over the digital signature information.

**Selma Nel**

**Principal Scientist & Project Manager: KMR Expansion Project**

**Integrated environmental authorisation process for two proposed projects at Kudumane Manganese Resources Mine Expansion Project, near Hotazel, Northern Cape Province**

**Registration and Comment Form**  
October 2021

SRK Consulting  
Public Participation Office  
Attention: Karabo Maruapula  
SRK Consulting  
Tel: (011) 441 1111  
Fax: 086 230 1462  
Email: [KMaruapula@srk.co.za](mailto:KMaruapula@srk.co.za)

Please complete and submit your comments to SRK's Public Participation Office.

TITLE		FIRST NAME	
INITIALS		SURNAME	
ORGANISATION			
POSTAL ADDRESS		POSTAL CODE	
LAND LINE TEL NO		CELL NO	
FAX NO		EMAIL	

**REGISTRATION AS AN INTERESTED AND AFFECTED PARTY (I&AP) (please mark applicable box with X)**

Please formally register me as an interested and affected party (I&AP) so that I may receive further information and notifications during the EIA process	<b>YES</b>	<b>NO</b>
I would like my notifications by:		
Letter (mail)	E-mail	Fax
		Telephone

**COMMENTS** (please use separate sheets if needed)

.....

.....

.....

.....

.....

.....

.....

.....

.....

.....

.....

.....

.....

.....

.....

.....

.....

.....

.....

.....

.....

**THANK YOU FOR YOUR CONTRIBUTION**

**NAME:** \_\_\_\_\_ **SIGNATURE:** \_\_\_\_\_ **DATE:** \_\_\_\_\_

By registering as an Interested and Affected Party, you consent to SRK processing your personal data on behalf of KMR for the purposes of obtaining feedback for the environmental authorisation process and to provide you with relevant information about it. Your information may be shared with selected third parties for these purposes only.



08 Diphlane 2021

Monaleseabe yo o Ratetegang

**Tiro e e kopantsweng ya thebolelo ya go dira ditiro mo tikologong ya porojeke tse pedi tsa katoloso e e kopelwang kwa Moepong wa Kudumane Manganese Resources gaufi le Hotazel, Porofenswe ya Kapa Bokone**

Nomoro ya Referense ya DMRE: NC 30/5/1/2/2/268 MR & NC 30/5/1/2/2/10053 MR

Tshedimosetso e e neilweng ka lekwalo leno la kitsisoka porojeke eno

- **Gore Tokumente ya Terafote ya Tshakatsheko ya Kamego ya Tikologo gore go tshwaelwe ka yone**
- **ITaletso ya go ikwadisa jaaka Motho yo o Nang le Kgatlhego le yo o Amegaqng (Interested and Affected Party [I&AP])**
- **Dikgato tse di latelang mo tirong e e kopantsweng ya Thebolelo ya go Dira Tiro mo Tikologong (Environmental Authorisation [EA])**

Kudumane Manganese Resources (Pty) Ltd (KMR) e tsamaisa moepo wa manganese wa KMR (Moepo) o o gaufi le Hotazel kwa Bokoone Bophirima. Moepo ono o na le dikarolo tse di farologaneng tsa Polasi ya York A 279 (York), Polasi ya Telele 312 (Telele), Polasi ya Kipling 271 (Kipling), Polasi Devon 277 (Devon) le Polast ya Hotazel 280 (Hotazel). KMR e na le ditetlelelo di pedi tsa go batla diminerala; o le mongwe o le malebana le dipolasi tsa York A279 le Telele 312 (Referense ya Tetelelo ya go Batla Diminerala ya: NC/30/5/1/2/2/0268 MR) le e le nngwe mo dipolasing tsa Devon 277, Hotazel 280 and Kipling 271 (Thebolelo ya go Batla Diminerala NC/ 30/5/1/2/2/10053 MR), Dithulaganyo tsa Taolo ya Tikologo tse pedi tse di dumeletsweng (Environmental Management Programmes [EMPrs]) tsa 2010 le 2014 ka go tlhoma, Laesense ya Tiriso ya Metsi (Water Use Licence [WUL]) e e bonweng ka 2016 le WUL e e fetotsweng e e reboletsweng ka 2018.

Boikaelelo jwa KMR ke go atosola ditiro tsa yone tse e di dirang mo nakong eno, gore e kgone go lelefatsa botshelo jwa moepo wa yo9ne le go tokafatsa bokgoni jwa tlhagisotiro, ka go dira gape le ditiro tse di amanang le go go epa le dikago le ditsela tsa mo mafelong a yone a a dumeletsweng a tetelelo ya go batla diminerala:

- Go okediwa ga Mesima e e leng teng ya York le Hotazel;
- Go epiwa ga matamo a a thibelang morwalela mo kgaolong ya Noka ya Ga-Mogara gore go kgone go atolosiwa Mesima ya York le Hotazel; le
- Go epiwa ga mesima e mesha e e gaufi le lefatshe mo polasing ya Kipling 271.

Ditiro tsa katoloso e dikgolo le dikago le ditsela tse di kwadilweng fa godimo di tlile go tlhoka gore go agiwe le gore go dirisiwe dikago le ditsela tse dipotlana le ditiro tse di latelang:

- Katoloso ya bolatlhelo jwa matlapa a a latlhiwang
- Katoloso ya bokoelelo jwa manya;
- Go dirwa ga ditsela tse disha le go okediwa ga ditsela tse di ntseng di le teng;
- Go agiwa ga Mataqmo a masha a Taolo ya Kgotlelo (di-PCD);

**Badirimmogo** R Armstrong, JS Bartels, CM Bauman, N Brien, JM Brown, LSE Coetser, CD Dalglish, BM Engelsman, R Gardiner, M Hinsch, SG Jones, W Jordaan, WC Joughin, DA Kilian, F Lake, JA Lake, NG Macfarlane, V Maharaj, I Mahomed, HAC Meintjes, MJ Morris, DH Mossop, GP Nel, VS Reddy, S Reuther, PJ Shepherd, T Shepherd, MJ Sim, VM Simposya, JS Stiff, M van Huyssteen, AT van Zyl, MD Wanless, CJ Wessels, ML Wertz, A Wood

**Bakaedi** AJ Barrett, CD Dalglish, WC Joughin, V Maharaj, VS Reddy, T Shepherd, AT van Zyl

**Associate Partners** PJ Aucamp, T Claassen, SA de Villiers, IT Doku, M du Toit, LM Linzer, JI Mainama, RD O'Brien, LC Shand

**Bagakolodi** JR Dixon, PrEng, GC Howell, PrEng, PhD, WC Joughin, PrEng, MSc, PR Labrum, PrEng, LM Linzer, PrSci Nat, PhD, SA Lorentz, PhD, RRW McNeill, PrTech Eng, HAC Meintjes, PrEng, MSc, PN Rosewarne, PrSci Nat, MSc, PE Schmidt, B.Comm, DipAcc, CA(SA), AA Smithen, PrEng, TR Stacey, PrEng, DSc, PJ Terbrugge, PrSci Nat, MSc, HFJ Theart, PrSci Nat, PhD, DJ Venter, PrTech Eng

**Diofisi tsa mo Aforika:**

Cape Town	+ 27 (0) 21 659 3060
Durban	+ 27 (0) 31 279 1200
East London	+ 27 (0) 43 748 6292
Johannesburg	+ 27 (0) 11 441 1111
Pietermaritzburg	+ 27 (0) 33 347 5069
Port Elizabeth	+ 27 (0) 41 509 4800
Pretoria	+ 27 (0) 12 361 9821
Accra	+ 23 (3) 24 485 0928
Lubumbashi	+ 243 (0) 81 999 9775

**Diofisi tsa Sethopha:**

Africa  
Asia  
Australia  
Europe  
North America  
South America





- Go bolokwa le mafaratlhatlha a metsi a ditanka le dipompo
- Go agiwa le go atolosiwa ga dipolante tsa phepafatso ya ntsholeswe;
- Go agiwa ga dikago le ditsela tse di tshegetsang diofisi tse di tshwanang le tsa botsamaisi le dikago le ditsela tse di thusang;
- Mafgelo a dilatliwa le a bobolokelo jwa peterolo;
- Go agiwa ga kampa ya rakonteraka; le
- Katoloso ya megala ya motlakase e e ntseng e le teng.

Lenaanethalo1 e naya tshedimosetso ka lefelo le diporojeke tse di dumeletsweng di tlleng go dirwa kwa go lone le dikago mabapi le mafelo a KMR a Ditettlelelo tsa go Batla Diminerala. Pele ga KMR e ka simolola ka ditiro tsa katoloso e e kopelwang, moepo o tlhokiwa gore o nne le dithebolelo tsa Department of Mineral Resources and Energy (DMRE) malebana le ditiro tse di kwadilweng tse di tla simololwang ke porojeke e e kopelwang go ya ka National Environmental Management Act (Act No. 107 wa 1998) (NEMA) le Taolo ya Naga ya Tikologo: Molao wa Dilatliwa (Act No. 36 wa 1998 (NEM WA).

### Lenaanethalo1: Ditiro tsa porojeke e e kopelwang le dikago le ditsela go ya ka Ditettlelelo tsa KMR tse pedi tsa go Batla Diminerala

Setlhogo sa Porojeke	Porojeke ya katoloso e e kopelwang e e amanang le Tettlelelo ya go Batla Diminerala: NC/30/5/1/2/2/0268 MR	Porojeke ya katoloso e e kopelwang e e amanang le Tettlelelo ya go Batla Diminerala: NC/ 30/5/1/2/2/10053 MR
Lefelo:	<ul style="list-style-type: none"> <li>• Polasi York A 279</li> <li>• Polasi Telele 312</li> </ul>	<ul style="list-style-type: none"> <li>• Polasi Devon 277</li> <li>• Polasi Hotazel 280</li> <li>• Polasi Kipling 271</li> </ul>
Ditiro tsa Porojeke le Dikago le Ditsela tse di tihokegang	<p>Polasi York A 279</p> <ul style="list-style-type: none"> <li>• Go atolosiwa ga Mosima wa York</li> <li>• Katoloso ya lupu ya seporo sa terena (mo e ka nnang 2.5 km)</li> <li>• Katologo ya lefelo la Bokoakoanyetswo jwa RoM</li> <li>• Katoloso ya lefelo la matlapa a a latlhiwang</li> <li>• Koketso ya tsela ya dilori tse dikgolo</li> <li>• Go Agiwa ga Lefelo la go Paka Diteraka</li> <li>• Go fudusiwa ga kago ya taolo ya go tsena mo lefelong</li> <li>• Katoloso ya tliniki ya moepo</li> <li>• Go atolosiwa ga lefelo la go paka dikoloi tsa babereki le baeti</li> <li>• Go fudusa boloko jwa diofisi</li> <li>• Katoloso ya lefelo ka Kakaretso la bobolokelo jwa dilatliwa tse di kotsi</li> <li>• Katoloso ya jarata ya go tlhatlhamolwa ga Metšhine e e sa Dirisiweng</li> <li>• Go tlhabololwa ga polante ya go phepafadiwa ga ntshetsoleswe</li> <li>• Go agiwa le go tswalediswa ga di-PCD tse disha</li> <li>• Katoloso ya bokoelole jwa Manganese</li> <li>• Go agiwa ga letamo la go Thibela Merwalela mo Nokeng ya Ga-Mogara</li> </ul> <p>Polasi Telele 312</p> <ul style="list-style-type: none"> <li>• Ga go na ditiro tse di tlleng go dirwa mo Polasing ya Telele 312 e le karolo ya Diporojeke tsa Katoloso ya KMR</li> </ul>	<p>Polasi Devon 277</p> <ul style="list-style-type: none"> <li>• Ditiro tsa go busetsa mosima o o ntseng o le teng</li> <li>• Go epiwa ga dipetse tsa go laola dipets</li> <li>• Go agiwa ga kago ya bobolokelo jwa dithuntshiwa</li> </ul> <p>Polasi Hotazel 280</p> <ul style="list-style-type: none"> <li>• Go Atolosiwa ga Mosima wa Hotazel</li> <li>• Go fudusiwa ga diofisi tswa Botsamaisi</li> <li>• Go busediwa ga tsela e e ntseng e le teng go dikologa lefelo la Bolatlhelo jwa Matlapa a a Latlhiwang</li> <li>• Go agiwa ga:</li> <li>• Bokokoanyetso jwa Diepiwa (Run of Mine [RoM])</li> <li>• Bolatlhelo jwa Matlapa a a Latlhiwang kwa Bokone, Borwa le Botlhaba</li> <li>• Letamo le le Thibelang Merwalela mo Nokeng ya Ga-Mogara</li> <li>• Ditanka tsa metsi a a kukiwang</li> <li>• Polante ya Phepafatso ya Ntsholeswe (Polante ya Lilliput</li> </ul> <p>Polasi Kipling 271</p> <ul style="list-style-type: none"> <li>• Mesima e mesha e e gaufi le bogodimo jwa lefatshe</li> <li>• Bolatlhelo jwa matlapa a a latlhiwang</li> <li>• Bolatlhelo jwa RoM</li> <li>• Tsela ya dilori tse dikgolo (mo e ka nnang 1.2km)</li> <li>• Lefelo la Bophepafatsetso jwa Ntsholeswe</li> <li>• Ditanka tsa metsi a a kukiwang</li> <li>• Diofisi tsa Botsamaisi</li> <li>• Lefelo la dielese le bobolokelo jwa peterolo</li> <li>• Lefelo la bobolokelo jwa matlakala</li> <li>• Kago ya bothubaganyetso</li> <li>• Letamo la taolo ya kgotlelo ya mowa</li> <li>• Kago ya Bothusetso (ka sekai, Bokalelo jwa Dikoloi)</li> </ul>

	<ul style="list-style-type: none"> <li>• Go agiwa le go tlhabetse ga tsela ya kerabole ya go ya kwa diofising tsa Kipling</li> <li>• Dipompo tsa mertsu tse di ka kukiwang go tswa kwa York go ya kwa Hotazel go ya kwa Kipling</li> <li>• Borogo jo bo tsamaiswanang le go faposiwa ga tsela mo nokeng</li> <li>• Megala ya motlakase le dikago tse di tsamaisanang le yone</li> </ul>
--	---

Ka baka la mofuta le bogolo jwa ditiro tse di kopelwang tse di amanang le Diporojeke tsa Katoloso le tsa KPM, go tlele go tlhokega tiro ka botlalo ya Tshkatsheko le Kamego ya Tikologo (Environment Impact Assess (EIA) e le karolo ya tiro ya thebolelo e e kopantsweng ya tikologo (environment authorisation (EA).

Mo godimo ga dibatliwa tsa EA e e kopantsweng, KMR e tla tshwanela gape go dira kopo wa WUL ka Lefapha la Metsi le Ntsholeswe malebana le ditiro tsa metsi tse di tla amanngwang le porojeke e e kopelwang mabapi le Molato wa Naga wa Metsi (Molao No. 36 wa 1998) (NWA)

SRK Consulting (South Africa) (Pty) Ltd (SRK) e tlhomilwe ke KMR jaaka mosekaseki wa tikologo yo o ikemetseng ka nosi (*environmental assesment practitioner* [EAP]) gore e laole le go rulaganyetsa thebolelo e e kopantsweng ya go dira ditiro mo tikologong (*environmental authorisation* (EA), go fetola Dithulaganyo tsa Taolo ya Tikologo di-EMPr tse di dumeletsweng le go dira tiro e e tsamaisanang le yone ya go tsaya karolo ga morafe go ya ka NEMA, NEM: WA, NWA and MPRDA.

### **Gore Tokumente ya Terafote ya Dipego tsa Tshkatsheko di teng gore morafe o tshwaele ka tsone**

Terafote ya Dipego tsa Tshkatsheko ya Kamego ya Tikologo (Environmental Impact Assessment Reports [Draft EIAs]), e e batliwang e le karolo ya tiro ya porojeke e e kopelwang ya EA e e kopantsweng, e tla dirwa gore e nne teng gore e sekasekiwe ke morafe mo nakong ya malatsi a le (30) a khalentara. Go lebeletsweng gore di-DSR di tlele go nna teng go simolola ka 13 Diphilane go ya go 12 Ngwanatsela 2021 kwa mafelong a a latelang a botlhe:

### **Lenaneothalo 1: Mafelo a botlhe a Terafote ya Dipego tsa EIA di tla bong di le teng go sekasekiwa ke morafe**

<b>Lefelo la botlhe</b>	<b>Lefelo</b>	<b>Nom ya Mog</b>
Mmasepala wa Selegae wa Joe Morolong .	D320 Cardington Road, Churchill Village, Kuruman, 8460	053 773 9300
Mmasepala wa Kgaolo wa John Taolo Gaetsewe	4 Federale Mynbou Street, Kuruman, 8460	053 712 8700
Hotazel Public Library	8 Bamford Ave, Hotazel, 8490	053 742 2000
Laeborari ya Morafe ya Kathu	1 Hendrik Van Eck Street, Kathu8446	053 723 2261
Webosaete ya SRK	<a href="https://docs.srk.co.za/en/za-kmr-expansion-project">https://docs.srk.co.za/en/za-kmr-expansion-project</a>	011 441 1111/27

Go ya ka tiro ya kopo ya WULA, di-I&AP di itsisiwe fano gore fa o ka batla go tsenya ditshwaelo tse o di kwadileng kgotsa tse o gananang le tsone mo diporojekeng tse di kopelwang tse di tsamaisanang le ditiriso tsa metsi o na le malatsi a le 60 a go dira jalo. Tsweetswee romela ditshwaelo/dikganano tseo kwa SKR ka 12 Ngwanatsela 2021 kwa mafelong a dintlha tse di neilweng fa godimo.

O a dumelelwa go tshwaela ka porojeke eno le/kgotsa di-DSR ka:

- Go tlatsa Foromo e e Tsentsweng ya go Ikwadiso le Ditshwaelo le go e isa kwa ofising ya morafe e e tsayang karolo.
- Go kwala lekwalo kgotsa thomelo ya se sengwe se se kwadileng ka imeile, poso kgotsa fekese;
- Go nna teng mo diputhengong tsa banaleseabe ka nako ya Kgato ya EIA ya porojeke eno; le/kgotsa
- Go ikgolagashya le ofisi ya SRK ya morafe e e tsayang karolo.

### **Taletso ya go kwadisa Jaaka wa Setlhophisa sa ba ba Nang le Kgatlhego le ba ba Amegileng**

Melawana ya NEMA ya 2014 (e e fetotsweng ka 2017) tlhoka gore Kwadiso ya Batho ba ba Nang le Kgatlhego le ba ba Amegang e nne teng ka nako yotlhe ya tiro ya thebolelo ya go dira tiro mo tikologong. O lalediwa go

ikwadisa jaaka motho I&AP wa tiro e e rileng ya thebolelo ya go dira ditiro mo tikologong ya Porojeke ya Katoloso, go tshwaela kgotsa go bua matshwenyego ape a o nang le one.

Tsweetswee tlatsa Foromo ya Kwadiso e Tshwaelo o bo o e tlise kwa Ofisi ya go Tsaya Karolo ga Morafe ya SRK (dintlha di fa tlase).

### **Dikgato tse di latelang tsa tiro ya Thebolelo ya go Dira Ditiro mo Tikologong**

Morago ga kitsiso ya gore Terafote ya dipego tsa EIA e teng gore morafe o e tthatlhobe, bo-I&AP botlhe ba tla itsisiwe ka matlha a diphuthego tse Terafote ya EIA/EMPr e tlleng go newa le go buisanngwa ka yone.

Fa o ka nna le dipotso dipe, wa tlhoka tshedimose tso e nngwe gape, kgotsa wa batla go bua ka mathata le matshwenyego kgotsa dikakantsho, tsweetswee ikgolaganye le Public Participation Office ya SRK kwa:

Karabo Maruapula

Public Participation Office

**SRK Consulting**

Mog: (011) 441 1111 / **Fekese:** 086 230 1462

Imeile: [KMaruapula@srk.co.za](mailto:KMaruapula@srk.co.za)

Re lebogela go tsaya karolo ga gago mo tirong eno ya thebolelo ya go dira ditiro mo tikologong mme re lebile pele go kopana le wena mo nakong e e tlang.

SRK Consulting - Certified Electronic Signature

 **srk consulting**

574378/444751/Letter

4499-4453-1454-HOWG-09/10/2021

This signature has been printed digitally. The Author has given permission for its use for this document. The details are stored in the SRK Signature Database

**Selma Nel**

**Principal Scientist & Project Manager: KMR Expansion Project**



**Tiro e e kopantsweng ya thebolelo ya go dira ditiro mo tikologong ya porojeke tse pedi tse di kopelwang kwa Porojekeng ya Katoloso ya Moepo wa Kudumane Manganese Resources, gaufi le Hotazel, Porofense ya Kapa Bokone**

**Foromo ya Kwadiso le Ditshwaelo  
Diphlane 2021**

**SRK Consulting  
Public Participation Office  
Attention: Karabo Maruapula  
SRK Consulting  
Mogala: (011) 441 1111  
Fekese: 086 230 1462  
Imeile: [KMaruapula@srk.co.za](mailto:KMaruapula@srk.co.za)**

**Tsweetswee kwala o bo o romele ditshwaelo tsa gago kwa Ofising ya SRK ya go Tsaya Karolo ga Batho.**

<b>SETLHOGO</b>		<b>LEINA</b>	
<b>DITLHAKAINA</b>		<b>SEFANE</b>	
<b>SETHEO</b>			
<b>ATERESE YA POSO</b>		<b>KHOUTU YA POSO</b>	
<b>NOMORO YA MOGATLA O O OFISING</b>		<b>NOMORO YA SELULAFOUNO</b>	
<b>NOMORO YA FEKESE:</b>		<b>IMEILE</b>	

**KWADISO JAAKA WA SETLHOPHA SA BANALEKGATLHEGO LE BAAMEGI (I&AP) (ka kopo tshwaya bokoso e e maleba ka X)**

Ka kopo nkwadise semolao jaaaka wa setlhophha sa banaleseabe le bakgatlhegi (I&AP) gore ke kgone go amogela tshedimosetso go ya pele le dikitsiso ka nako ya tiro ya EIA	<b>EE</b>	<b>NNYAA</b>
<b>Ke batla go amogela dikitsiso ka:</b>		
Lekwalo (poso)	Imeile	Fekese
		Mogala

**DITSHWAELO** (tsweetswee dirisa dipampiri tse di farologaneng fa go tlhokega)

.....

.....

.....

.....

.....

.....

.....

.....

.....

.....

.....

.....

.....

.....

.....

.....

.....

.....

.....

.....

.....

**RE LEOGELA SEABE SA GAGO**

**LEINA:**

**MOSAENO:**

**LETLHA:**

Ka go ikwadisa jaaka Motho yo o Nang le Kgatlhego le yo o Amegang, o dumelela gore SRK e dirise dintha tse di tserweng mo go wena e direla KMR gore e nne le pegelo ya tiro ya thebolelo ya go dira ditiro mo tikologong le go go naya tshedimosetso e e tshwanetseng kaga yone. Tshedimosetso ya gago e ka nja ya bontshiwa batho ba bangwe ka mabaka ano fela.



## COMMENTS AND RESPONSE REGISTER

Updated: October 2021

Interested and Affected Parties <i>X indicate those who have been consulted with</i>	Date Comments Received	Issues raised	EAPs response to issues as mandated by the applicant	Section reference where issue were addressed in EMPr
<b><u>AFFECTED PARTIES</u></b>				
<b>Landowner/s</b>				
No comments or issues were received				
<b>Lawful occupier/s of the land</b>				
No comments or issues were received				
<b>Landowners or lawful occupiers on adjacent properties</b>				
No comments or issues were received				
<b>Municipal councillor</b>				
No comments or issues were received				
<b>Municipality</b>				
No comments or issues were received				
<b>Organs of state</b>				
No comments or issues were received				
<b>Communities</b>				
No comments or issues were received				
<b>Dept. Land Affairs</b>				
No comments or issues were received				
<b>Traditional Leaders</b>				
No comments or issues were received				
<b>Dept. Environmental Affairs</b>				
No comments or issues were received				
<b>Other Competent Authorities affected</b>				
No comments or issues were received				
<b><u>OTHER AFFECTED PARTIES</u></b>				

## COMMENTS AND RESPONSE REGISTER

Updated: October 2021

Interested and Affected Parties <i>X indicate those who have been consulted with</i>	Date Comments Received	Issues raised	EAPs response to issues as mandated by the applicant	Section reference where issue were addressed in EMPr
Mrs B.G. Mokgwabone	13 July 2021	<p>Lodging a dispute on Farms to be mined by Kudumane Manganese Resources (Pty) Ltd.</p> <p>A formal letter was sent as part of the email (See below)</p>	<p>Dear Mrs Mokgwabone, Thank you for your email, we acknowledge receipt of your letter. SRK has forwarded your letter to Kudumane Mine for their records and considerations. We will provide feedback in due course.</p> <p>At this stage SRK would like to restate that the proposed expansion project is currently on hold.</p> <p>Any movement on the project and required authorisation processes will be communicated accordingly.</p> <p>Kind Regards Karabo Maruapula</p>	Reference has been made in the document, however, as this is a land dispute this has been handed over KMR legal department.
<b>INTERESTED PARTIES</b>				
Northern Cape Wayleaves	25 August 2021	<p>Good Morning, Karabo. We have received your Stakeholder notification dated 18th August.</p> <p>The following is required:</p> <ul style="list-style-type: none"> <li>• A kmz file showing the proposed expansion on the affected Land Parcels.</li> <li>• Provincial roads from which the development</li> </ul>	<p>Good day,</p> <p>Thank you for your email and shown interest in the proposed Kudumane Manganese Resources' Expansion Project. Please find attached as requested the KMZ file containing the location of all proposed infrastructure that will be associated with the project in relation to the farms.</p> <p>With respect to accessing the current and future operations, we would like to provide you with the following response:</p> <p>The main access to the York and Hotazel operational areas are via the tar road coming from the town Hotazel – the tar road that turn off from the R31. No new access roads will be required in respect of the York and Hotazel operations and the proposed expansions at these areas.</p> <p>In term of the farm Kipling 271, where the new offices are proposed, access will be gained via a new gravel road in negotiation with the Local Municipality. Details</p>	Details have been provided in the EIA which will be distributed to the public for review.

## COMMENTS AND RESPONSE REGISTER

<b>Interested and Affected Parties</b> <i>X indicate those who have been consulted with</i>	<b>Date Comments Received</b>	<b>Issues raised</b>	<b>EAPs response to issues as mandated by the applicant</b>	<b>Section reference where issue were addressed in EMPr</b>
		will gain access. Thank you for reaching us.	of this will be provided during the subsequent detailed Environmental Impact Assessment (EIA) Phase of the project.  We hope you will find the attached and response in order.  Please do not hesitate to contact us should you require any further or addition information.  Kind regards, Selma Nel	



# Flavourful dish wards off winter chills

**Lamb shank is a perfect dish for cold winter days. Simply put it in the oven and forget about it.**

After a couple of hours, you'll have a meal that melts in your mouth, says Wesli Charles Jacobs, executive sous chef at The Table Bay hotel.

He describes it as a warm, flavourful dish that pairs beautifully with barley risotto and butternut.

## Ingredients

- 300 g x 4 portions of lamb shank
- 1 clove of garlic
- 1 bottle of red wine
- 200 ml chicken stock
- 2 bay leaves
- 100 g celery
- 100 g carrots
- 100 g leeks
- 100 g pearl barley
- 80 ml white wine
- 10 g thyme

- 80 g unsalted butter
- 2 peeled onions
- 1/2 tsp salt
- 1/2 tsp black pepper
- 200 g butternut
- 5 g pea shoots or other microgreens

## Method

Preheat the oven to 160 °C.

Season the lamb shanks with salt and pepper.

Add oil to a cast iron casserole dish, one large enough to fit all the lamb shanks.

Fry the shanks in batches, being careful not to let them colour too much.

Once the lamb shanks have been removed from the pot, add the celery, leeks, carrots, bay leaves and one onion. Cook for five minutes on medium heat before adding the red wine and chicken stock.

Place the browned lamb

shanks back in the casserole dish and cover with foil.

Place the dish into the oven and cook for two hours or until the meat falls slightly off the bone.

Add water to a pot and fill with pearl barley. Allow to cook for 30 minutes, or until soft.

Add butter to a saucepan and sauté the other onion until translucent. Add the cooked barley, thyme and white wine and allow to cook for five minutes. Add fresh cream, parmesan and seasoning to taste.

Cut the butternut into 4 cm x 4 cm cubes and blanch until soft. Add butter to saucepan and sauté the butternut. Season with salt and pepper and place the butternut on the risotto.

Garnish with microgreens. The recipe serves four people.



Lamb shank, paired with barley risotto and butternut, is the perfect meal to ward off winter chills.

PHOTO: TABLE BAY HOTEL

## INTEGRATED ENVIRONMENTAL AUTHORISATION PROCESS FOR TWO PROPOSED EXPANSION PROJECTS AT KUDUMANE MANGANESE RESOURCES MINE NEAR HOTAZEL, NORTHERN CAPE PROVINCE

DMRE Reference Numbers: NC 30/5/1/2/2/268 MR & NC 30/5/1/2/2/10053 MR  
SRK Reference Number: 574378

### INVITATION TO REGISTER AS AN INTERESTED AND AFFECTED PARTY AND ANNOUNCEMENT OF THE AVAILABILITY OF THE DRAFT SCOPING REPORTS FOR PUBLIC REVIEW

Kudumane Manganese Resources (Pty) Ltd (KMR) operates the KMR manganese mine (the Mine), near Hotazel in the Northern Cape. The Mine comprises various portions of Farm York A 279 (York), Farm Telele 312 (Telele), Farm Kipling 271 (Kipling), Farm Devon 277 (Devon) and Farm Hotazel 280 (Hotazel). KMR is authorised to mine and process manganese ore at these properties in terms of two Mining Rights (MRs) (MR 268 & MR 10053), two approved Environmental Management Programmes (EMPrs) of 2010 and 2014 respectively, a Water Use Licence (WUL) obtained in 2016 and a WUL amendment authorised in 2018.

Notice is hereby given of KMR's intention to expand its existing operations by constructing additional mining related infrastructure and amending certain mining related activities and infrastructure to improve the mine's production capacity. KMR proposes to undertake the following mining activities:

- The development of a new opencast pit mine on Kipling to mine the near surface manganese resource;
- Expansion of the existing Hotazel and York opencast mining operations;
- Development of two attenuation dams on the Ga-Mogara River, to allow for the expansion of the York and Hotazel Pits;
- Various supporting infrastructure including waste rock dumps and ore stockpiles;
- Additional crushing and screening operations at Kipling;
- Expansion of the rail loop to make provision for additional waste rock dump; and
- Various ancillary infrastructure, such as offices, haul roads, water and electricity reticulation infrastructure, weighbridge, sewage treatment facilities; pollution control dams, waste management facilities, conveyor systems, clinic, etc.

Before KMR can commence with the proposed expansion activities, the mine is required to obtain the necessary authorisations from the Department of Mineral Resources and Energy (DMRE) in respect of the listed activities that will be triggered by the proposed projects in terms of the National Environmental Management Act (Act No. 107 of 1998) (NEMA) and National Environmental Management: Waste Act (Act No. 36 of 1998) (NEM: WA). Due to the nature and extent of the proposed activities associated with the KMR Expansion Projects, a full Scoping and Environmental Impact Assessment (EIA) process will be required as part of the integrated environmental authorisation (EA) process.

In addition to the integrated EA requirements, KMR will also need to apply for a WUL through the Department of Water and Sanitation in respect of the following water uses that will be associated with the proposed project in terms of the National Water Act (Act No. 36 of 1998) (NWA):

- Section 21(a) - Taking water from a water resource
- Section 21(b) - Storing water
- Section 21(c) - Impeding or diverting the flow of water in a watercourse
- Section 21(i) - Altering the beds, banks, course or characteristics of a water course
- Section 21(g) - Disposing of waste in a manner which may detrimentally impact on a water resource
- Section 21(j) - Removing, discharging or disposing of water found underground if it is necessary for the efficient continuation of an activity or for the safety of people

KMR appointed SRK Consulting (South Africa) (Pty) Ltd (SRK) as the independent environmental assessment practitioner to manage and facilitate the integrated EA process, amend the approved EMPrs and undertake the associated public participation process in accordance with NEMA, NEM: WA, NWA and MPRDA.

The Draft Scoping Reports will be made available for public comment for a period of thirty (30) calendar days as from 24 August to 23 September 2021, at the following public places:

Public Place	Locality	Tel No
Joe Morolong Local Municipality	D320 Cardington Rd, Churchill Village, Kuruman, 8460	053 773 9300
John Taolo Gaetsewe District Municipality	4 Federale Mynbou Street, Kuruman, 8460	053 712 8700
Hotazel Public Library	8 Bamford Ave, Hotazel, 8490	053 742 2000
Kathu Public Library	1 Hendrik Van Eck Street, Kathu, 8446	053 723 2261
SRK's Website	https://docs.srk.co.za/en/za-kmr-expansion-project	011 441 1111/27

In terms of the Water Use License application process, I&APs are hereby notified that should you wish to submit written comments or objections to the proposed projects and associated water uses you have 60 days to do so. Please submit such comments/objections to SRK by 23 October 2021 at the details provided above.

Interested and affected parties are invited to register and direct any comments or queries regarding the proposed project to:

### SRK Consulting

Att: Karabo Maruapula, Public Participation Office, P.O. Box 55291, Northlands, 2116,  
Tel: (011) 441 1111 / Fax: 086 230 1462 / Email: KMaruapula@srk.co.za

## Sukses jare lank dié aartappelskyfies se geur

Nadat Simba onlangs aangekondig het dat sy tamatiegeur-skyfies van die mark verwyder gaan word, kyk ons terug na die geskiedenis van die aartappelskyfie in Suid-Afrika en die wêreld, asook ander interessantheide rondom dié geliefde peuselhappy.

### Simba se storie

Dit begin met 'n ouma. Voor Simba-skyfies was daar Ouma-beskuit. In 1939, die toppunt van die Groot Depressie, het 'n dominee in Molteno 'n aanbod aan 'n paar vroue in sy gemeente gemaak.

Sy idee is geïnspireer deur die Bybelse verhaal waar mense met hul talente moet woeker (Mattheus 25:14-30). Hy het vir elkeen van hierdie vroue 'n halfkroon (twee sjelings en 'n sikspens) gegee en hulle uitgedaag om die geld tot hul eie voordeel te gebruik en dit te vermeerder.

Een van die vroue, Elizabeth Ann Greyvenstein – oftewel Nannie – van die plaas Friedenheim, het die dominee se stoutste verwagtinge oortref en 'n reuse-sukses van die uitdaging gemaak.

Met die geld wat sy gekry het, het sy bestanddele gaan koop vir die beskuit wat haar familie toe al geslagte lank gebak het.

Sy het dié beskuit by 'n kerkbasaar verkoop. Die beskuit is blykbaar binne minute uitverkoop. Die aanvraag, en so ook die behoefte, was so groot dat sy besluit het om die beskuit 'n bietjie wyer te verkoop.

Nannie se man, ene Thys, het 'n Ford-handelstak in die dorp besit en haar seun Leon het eendag besluit om sommer een van die Ford-bakkies te leen en 'n ent noordwaarts te ry om te kyk of hy die mark vir sy ma se beskuit in ander dorpe kan toets.

Wat 'n sukses was dit nie. Met 'n ellelange lys bestellings is hy terug plaas toe.



Simba het onlangs aangekondig dat die tamatiegeur-skyfies van die mark verwyder word.

FOTO: VERSKAF

Dit is toe dat die gesin besluit om maar die ou stoor op die plaas in die land se eerste beskuitfabriek om te tower.

### Die leeu begin brul

In 1952 het ouma Nannie besluit om haar seuns oorsee te stuur. In Duitsland het Leon iets geproe wat toe reeds in Europa redelik bekend was, naamlik die "crisp".

Binne die volgende paar dae het hy toevallig vir Herman Lay (van Lay's tjips-faam) ontmoet. Ná sy ontmoeting met Lay het Leon met sy nuwe idee na Suid-Afrika teruggekeer. Die familie het besluit op die naam Simba, wat in Swahili "leeu" beteken.

In 1957 is Simba-skyfies in Suid-Afrika bekend gestel.

### Die welpie raak groot

In Europa en Amerika is skyfies net in een geur gemaak, en jy moes dit self met 'n aparte pakkie sout geur. Simba was uniek in dié opsig dat hy die eerste gegeurde skyfies gemaak het (vandaar die leuse "Roars with flavour"). Die eerste

geure was sout-en-asyn, kaas-en-uisie en tamatie.

Die besigheid het verder uitgebrei en ook pap en grondboontjies begin verkoop.

Fedfood het die maatskappy in 1977 gekoop, en in 1992 het Foodcorp dit by FedFood oorgekoop. Sedert 1999 behoort die maatskappy aan PepsiCo.

### Geskiedenis van die skyfie

Die aartappelskyfie is in 1853 deur George Crum uitgedink.

Crum was 'n sjef by die Moon Lake Lodgeoord in Saratoga Springs, New York.

"French fries" was gewild in dié restaurant, maar eendag het 'n klant gekla dat die tjips te dik is. Crum het toe die aartappels dunner gesny, maar steeds was die klant nie tevrede nie.

In 'n poging om die klant 'n les te leer besluit Crum toe om die tjips so dun te maak dat dit nie met 'n vurk geëet kan word nie.

Die klant was egter mal oor die dun tjips, en meteens is die aartappelskyfie gebore.

Crum se skyfies is oorspronklik "Saratoga Chips" en "potato crunches" genoem. Kort daarna is dit verpak en wyd verkoop.

Crum het ook sy eie restaurant oopgemaak.

In die 1920's het 'n verkoopsman met die naam Herman Lay in die suide van Amerika skyfies vanuit sy motor se bagasiebak verkoop.

In 1926 het Laura Scudder, wat 'n skyfie-fabriek in Monterey Park, Kalifornië, besit het, 'n waksapiersakkie ontwikkel wat die skyfies kraakvars kon hou.

Dit was 'n groot sprong vorentoe, want tevore is skyfies in grootmaat by winkels afgelewer en het hulle gesukkel om dit vars te hou totdat dit verkoop.

–Saamgestel deur John Grant Munro, Netwerk24