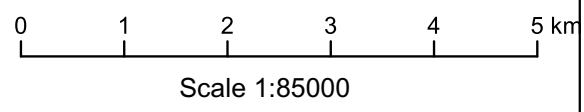
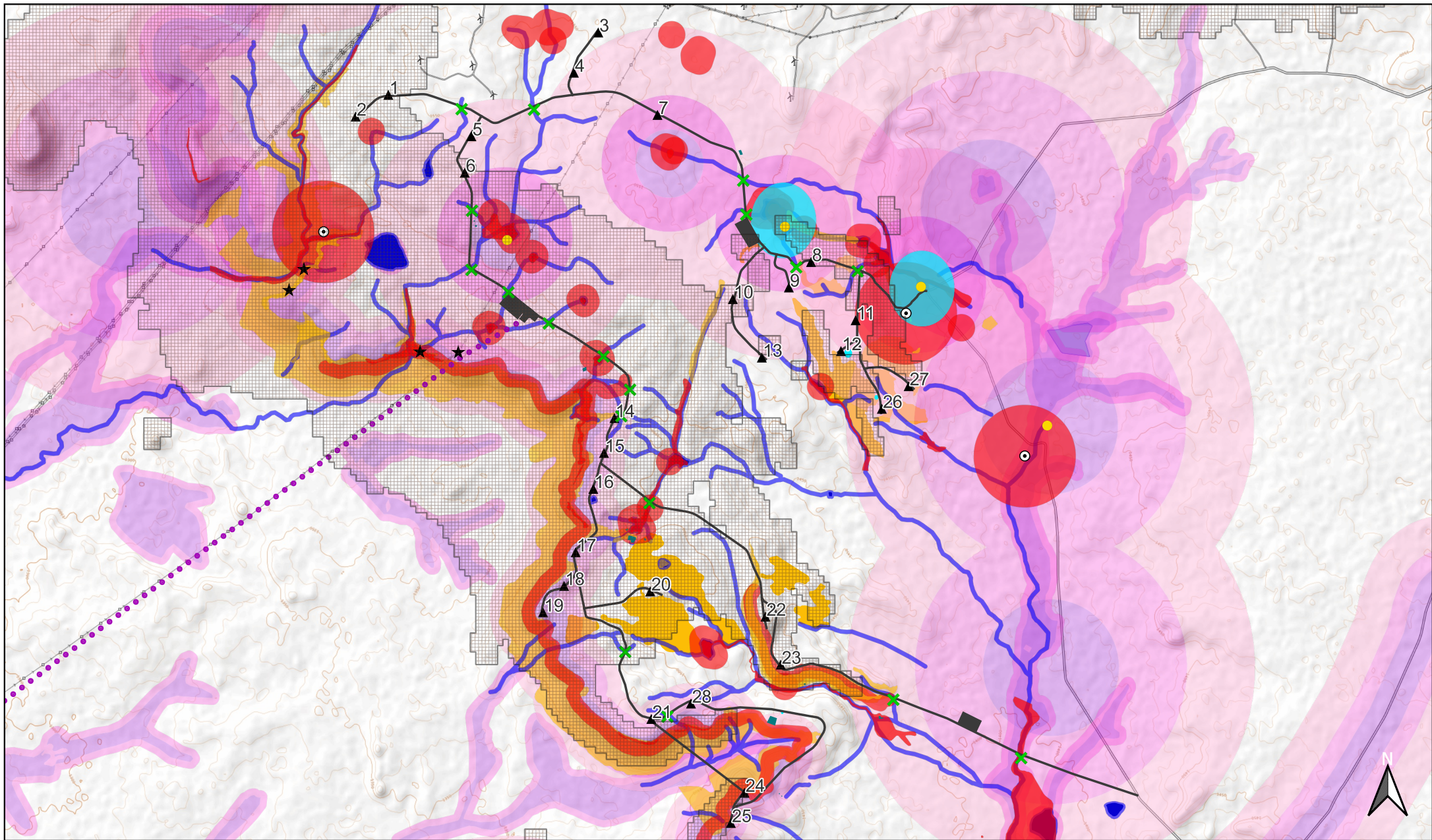


- Affected Farm Portions
- ▲ Proposed Turbine
- Access Points
- Internal Roads (6m width)
- Access Road (to be upgraded)
- Substation & Building Complex

- Substation & Building Complex
- Temporary Laydown Areas
- Access Road (Separate BAR Process)
- Switching Station (Separate BAR Process)
- 132 kV Grid Connection (Separate BAR Process)



**Figure 1: Final Layout Plan
De Aar 2 South WEF**



- ▲ Proposed Turbine
- Proposed Infrastructure
- ⋯ Grid Connection
- ✕ Watercourse crossings

- Turbine Exclusion Areas**
- High Sensitivity (Fauna & Flora)
 - Heritage Buffer
 - Heritage No Go
 - Aquatic Buffer

- Environmental Sensitivities**
- Medium Sensitivity (Fauna & Flora)
 - VERA* Model (High)
 - Jackal Buzzard Nest
 - ★ Verreaux's Eagle Nest
 - Noise Sensitive Receptor

- Visual Sensitivity**
- Very High
 - High
 - Medium

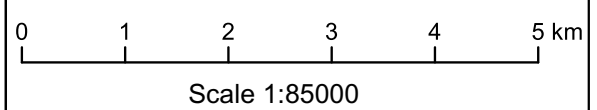


Figure 2: Environmental Sensitivity Map
De Aar 2 South WEF