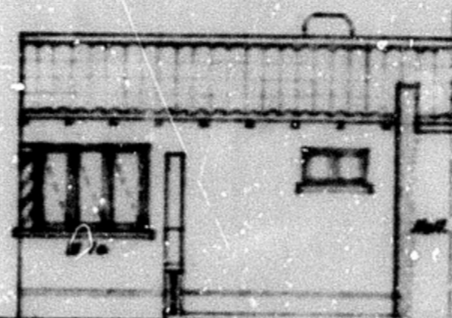
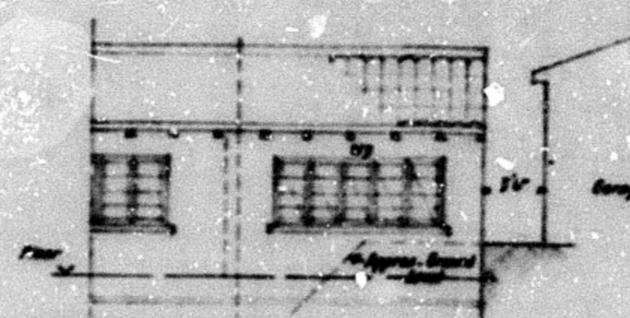


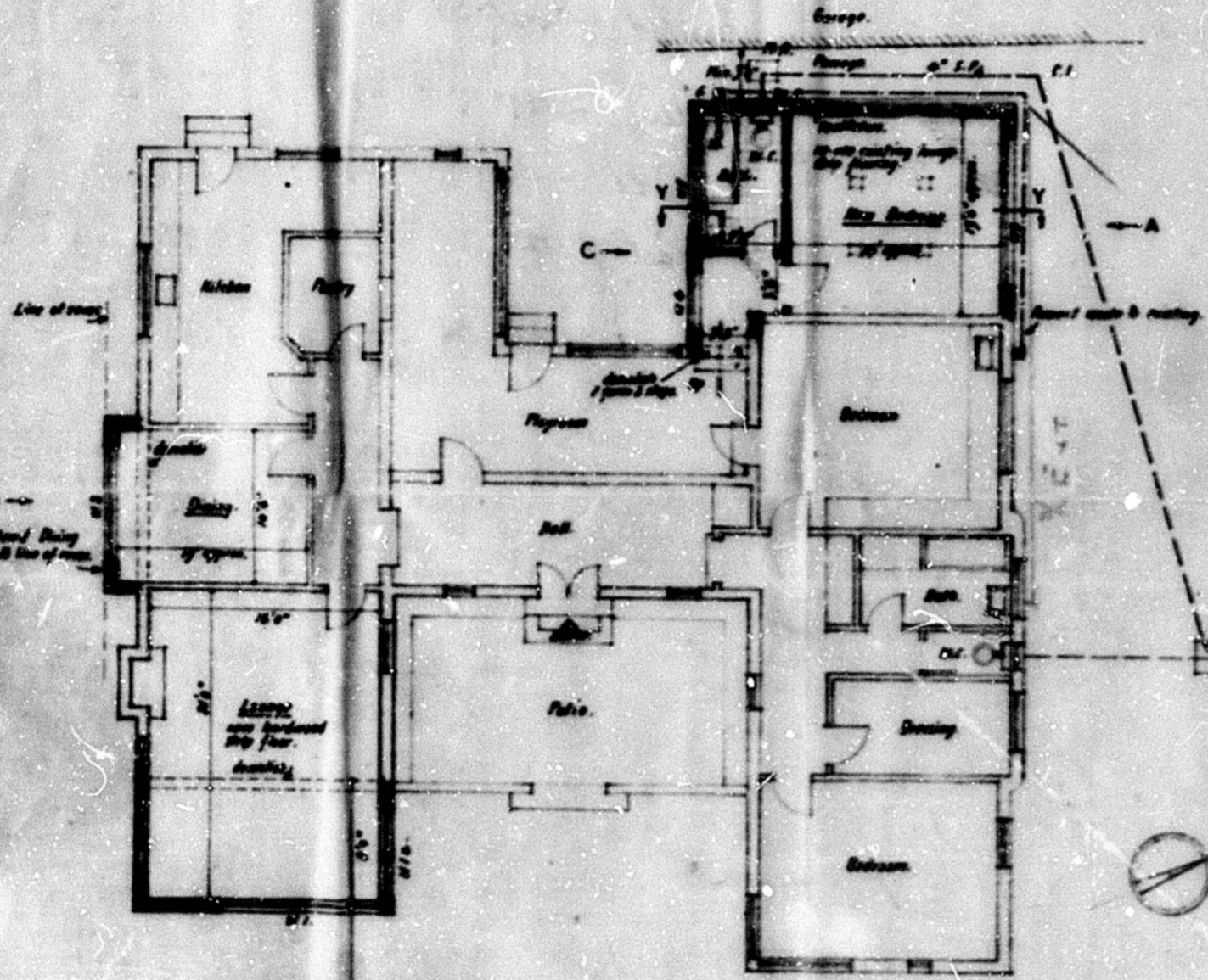
EAST ELEVATION *Note: Paint - plaster internally.*



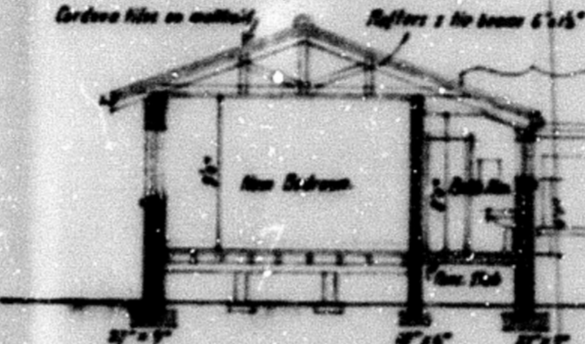
PART N. ELEV. TO PATIO



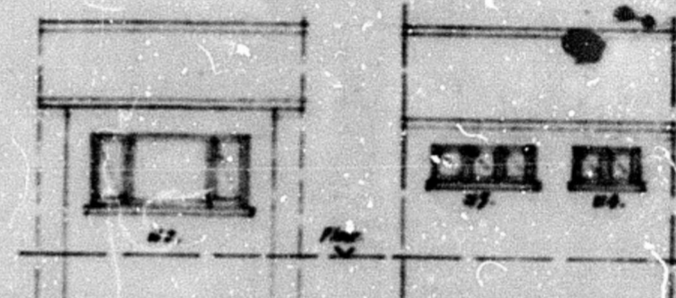
ELEV. AT 'A'



PLAN



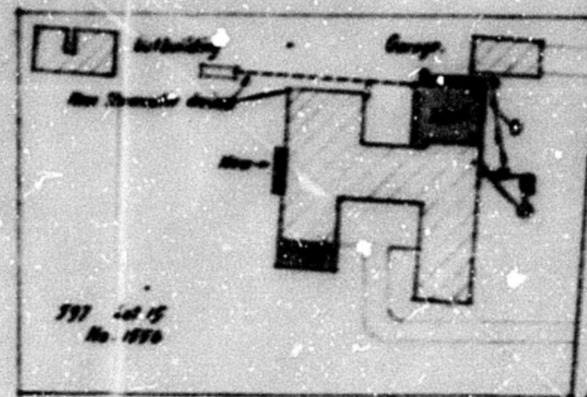
SECTION Y-Y



ELEV. 'B'



ELEV. 'C'



SITE PLAN

Official stamp from the City and Water Engineering Dept., Water Division, dated 21-5-1951. It includes a signature and a connection fee.



Note: New windows are numbered as follows: - M1, M2, M3, M4, M5.

Scale: 1/16" = 1 foot & 00"-1
Drawing No. D.100/51.
Date: 3rd March 1951.

ADDITIONS TO HOUSE AT DURBAN NORTH FOR W.G. SANDERS ESQ.

FREDERIC C. LEE
S. A. L. ARCHT. R.I.A.
CHARTERED ARCHITECT
ANSTEY'S BUILDINGS
WEST STREET, DURBAN