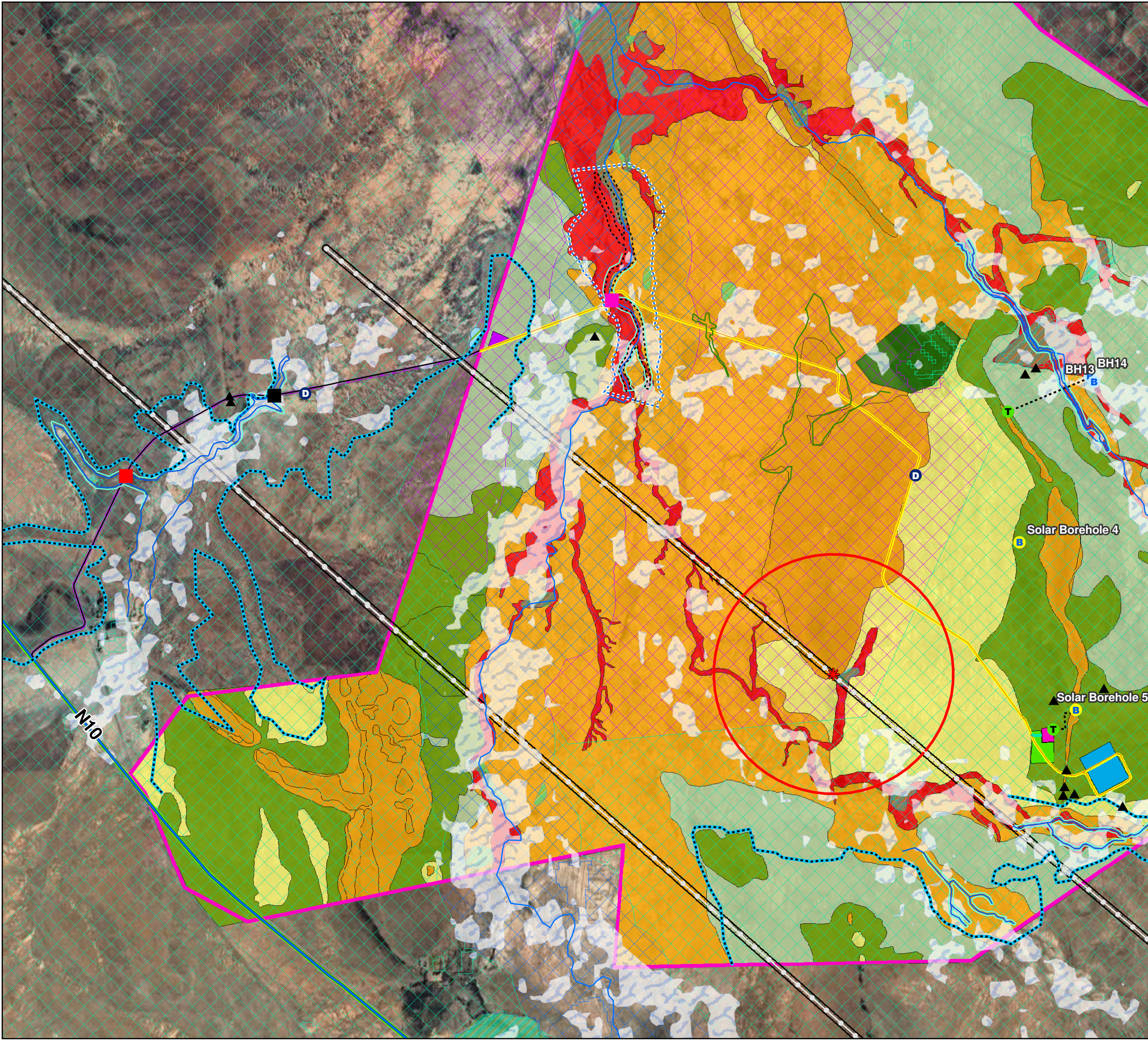


SENSITIVITY MAP: PREFERRED ALTERNATIVE

Upgrading & Development of an Access Road from the N10/Burgerville District Road (2448) Turn-Off into the Farm Riet Fountain No. 39C and to the Switching Station and Main Transmission Substation on Sun Central Cluster 1 (300 MW) Solar PV Facility between De Aar & Hanover, Emthanjeni Local Municipality, Pixley Ka Seme District Municipality, Northern Cape Province, South Africa.

Legend

- ▲ Heritage Site
- Water Storage Tank
- ✳ Nest Site
- Existing Culvert Crossing
- Proposed Culvert Crossing
- Proposed Drift Crossing
- Borehole
- Solar Borehole
- Earth Dam Site
- 400kva Powerline
- Rivers
- Pipeline (Borehole to Tank)
- National Road
- Secondary Road
- Alluvial Floodplains
- Large Ephemeral Tributary
- Tributary Buffer
- Brak River Active Channel
- Brak River Macro Channel
- Small Ephemeral Tributary
- Nest Site Buffer
- Seasonal Wetland
- Permanent Wetland
- NFEPA Wetlands
- Pondered Flood Occurrence Zone
- Preferred Alternative (Internal Road) Servitude Area (19 m Wide)
- Preferred Alternative (District Road) Servitude Area (19 m Wide)
- N10 Servitude Area (35m Wide)
- Eskom Servitude Area (55m Wide)
- MTS Footprint
- Construction Camp
- Switching Station
- Important Bird Area (Whole Area, not indicated)
- Strategic Water Source Area (Whole Area, not indicated)
- Consolidated properties of landowner
- Northern Cape Terrestrial CBA's**
- Critical Biodiversity Area One
- Critical Biodiversity Area Two
- Ecological Support Area
- Terrestrial Assessment**
- Very High
- High
- Medium-High
- Medium
- Medium-Low
- Low



DATE: 07/03/2023
 LOCAL AUTHORITY: EMTHANJENI LOCAL MUNICIPALITY
 PLAN NUMBER: DeAar Cluster 1 Access Road Sensitivity Map (Alt1)
 SCALE: 1:30 350
 PREPARED FOR: Ecologes Environmental Consultants
 DRAWN: DIGITAL EARTH
 linda@digitalearth.co.za
 COORDINATE SYSTEM: GCS WGS 1984

