

Vulture Incidents – Manyoni Private Game Reserve

Summary

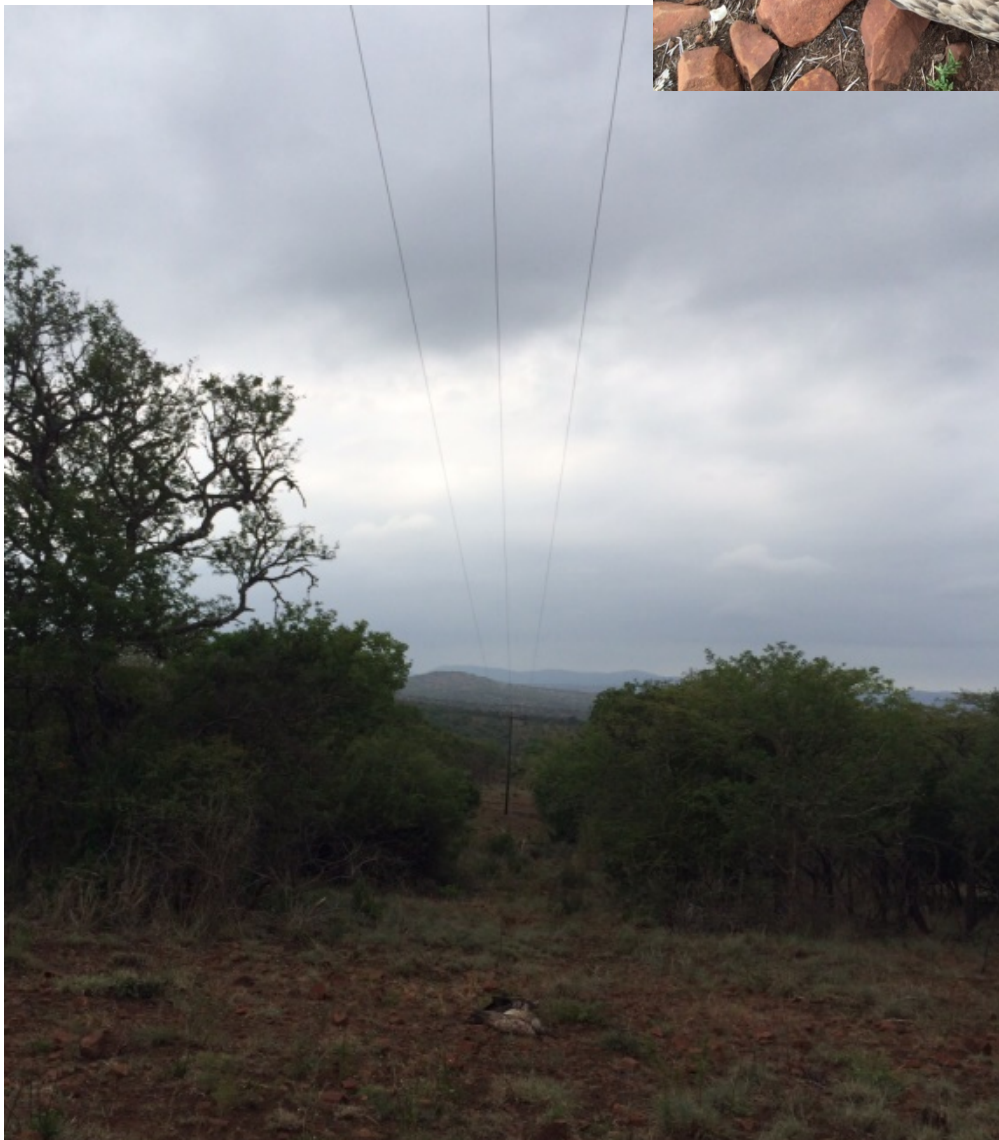
Date	Species	Page
23/03/2015	White-backed vulture	1
04/10/2016	White-backed vulture	2
11/10/2016	White-backed vulture	3
01/02/2017	Lappet-faced vulture	4
30/05/2017	Secretary bird	5

See details below

DATE: 23rd March 2015

Herewith the photos of the White-backed vulture that collided with a power line on Marco Polo in the reserve.

The guide did not have a GPS with him. The pole number is T1827 L1



DATE: 4th October 2016

A White-backed vulture was found dead beneath an Eskom powerline on the Zululand Rhino Reserve, it is presumed that death was caused by a collision with the power line.

The Eskom pole number is MKZ08S2507

GPS Co-ordinates: S 27.79837 E 032.02362



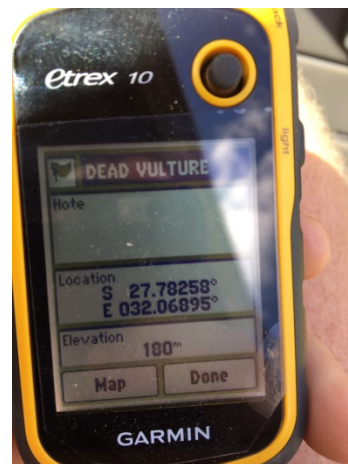
DATE: 11th October 2016

Mortality: White-backed vulture LM

GPS Co-ordinates: S 27°49'18" E 32°2'13"



Date	Collision or electrocution	Property	Species
01-02-2017	Collision	Zululand Rhino Reserve	Lappet-faced vulture
Distribution or powerline?	Eskom pole number	GPS DDS	GPS DDE
Distribution line	MKZ 112	S-27. 65557	E 31.99999
Eskom mitigation efforts in place?	Photos attached?	Placement of carcass	Injuries on carcass
No	Yes	Underneath lines	Yes broken wing
Carcass collected?	History of mortalities on that line?	EWT reference	Submitted by
No	No	2763	Dane Antrobus



DATE: 30th May 2017

Dead secretary bird under powerlines that run between Nonile House and Mavela House

GPS Co-ordinates: S 27°43'6" E 32°2'6"

Elevation 250m

