

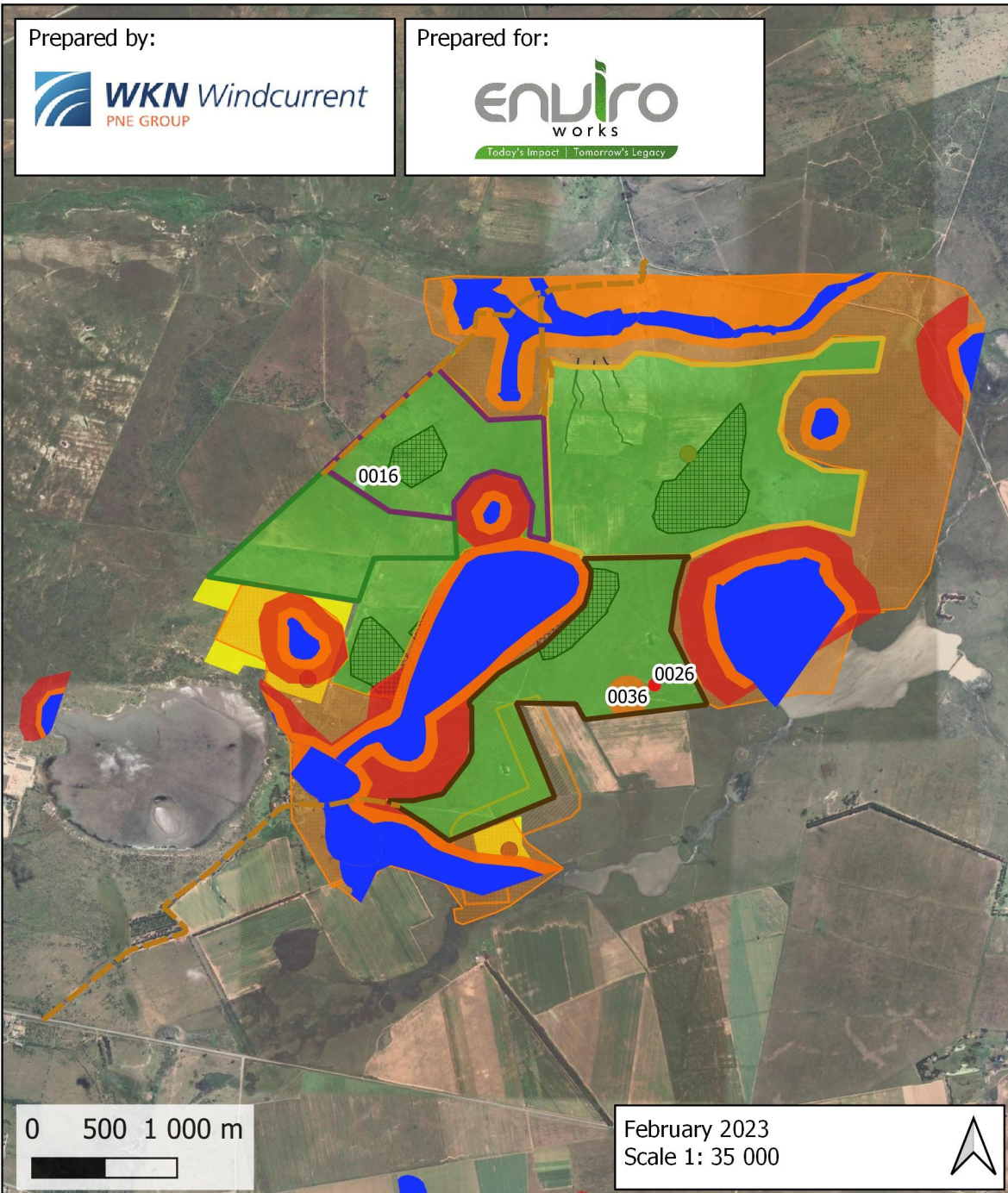
PROPOSED KHAUTA SOLAR PV CLUSTER AND ASSOCIATED GRID CONNECTION DEVELOPMENT, RIEBEECKSTAD
NEAR WELKOM, MATJHABENG LOCAL MUNICIPALITY, FREE STATE PROVINCE

Sensitivity Map

Prepared by:



Prepared for:



Legend:

- Facility Access Roads
- Khauta West Solar PV Facility RF (Pty) Ltd 80MW
- Khauta South Solar PV Facility RF (Pty) Ltd 110MW
- Khauta North Solar PV Facility RF (Pty) Ltd 165 MW
- Khauta e Nyane Solar PV Facility RF (Pty) Ltd 50MW
- Potential buildable area
- Aquatic**
- Depression pans 2
- Artificially constructed earth dams 1
- Artificially constructed earth dams 2
- Artificially constructed earth dams 3
- Artificially constructed earth dams 4
- Artificially constructed earth dams 5
- Artificially constructed earth dams 6
- Artificially constructed earth dams 7
- Artificially constructed earth dams 10
- Unchannelled valley bottom wetlands 1
- Significant watercourse 1
- Significant watercourse 2
- Significant watercourse 3
- Significant watercourse 4
- Significant watercourse 5
- Significant watercourse 9
- Significant watercourse 10
- Significant watercourse 11
- Significant watercourse 12
- Significant watercourse 13
- Preferential water flow paths 1 not recommended to be retained
- Preferential water flow paths 2 not recommended to be retained
- Preferential water flow paths 3 not recommended to be retained
- Preferential water flow paths 4 not recommended to be retained
- Depression wetland
- Depression wetlands 1
- Depression wetlands 2
- Depression wetlands 3
- Depression pan 1
- Depression pan 2
- Valley bottom wetland
- Valley bottom wetland 4
- Valley bottom wetland 5
- Water quality buffer**
- Water quality buffer 1
- Water quality buffer 2
- Water quality buffer 3
- Water quality buffer 5
- Water quality buffer 6
- Water quality buffer 6 (80 m)
- Water quality buffer 8 (80 m)
- Water quality buffer 4 (80 m)
- Biodiversity buffer**
- Biodiversity buffer 1
- Biodiversity buffer 3
- Biodiversity buffer 4
- Biodiversity buffer 5
- Biodiversity buffer 5 (250 m)
- Biodiversity buffer 7 (300 m)
- Buffer 1 (80 m, 150 m, 200 m & 300 m)
- Terrestrial**
- Ecological corridors
- Ecological corridors 1
- Ecological corridors 2
- Ecological corridors 3
- Sungazer**
- Abandoned Burrows
- ◆ Burrows
- Suitable habitats
- Offsite suitable habitats
- Avifauna**
- Collision Risk Areas**
- mark using bird flight diverters
- 132 kV CRA 1
- Heritage**
- 0016 MSA core
- Sensitive heritage feature ('no go')
- 0036 Outspan
- 0026 Graveyard
- Buffers**
- heritage areas (sensitive/no go)
- 0036 Outspan 150m buffer
- 0026 Graveyard_50m_buffer
- Google Satellite

0 500 1 000 m

February 2023
Scale 1: 35 000

