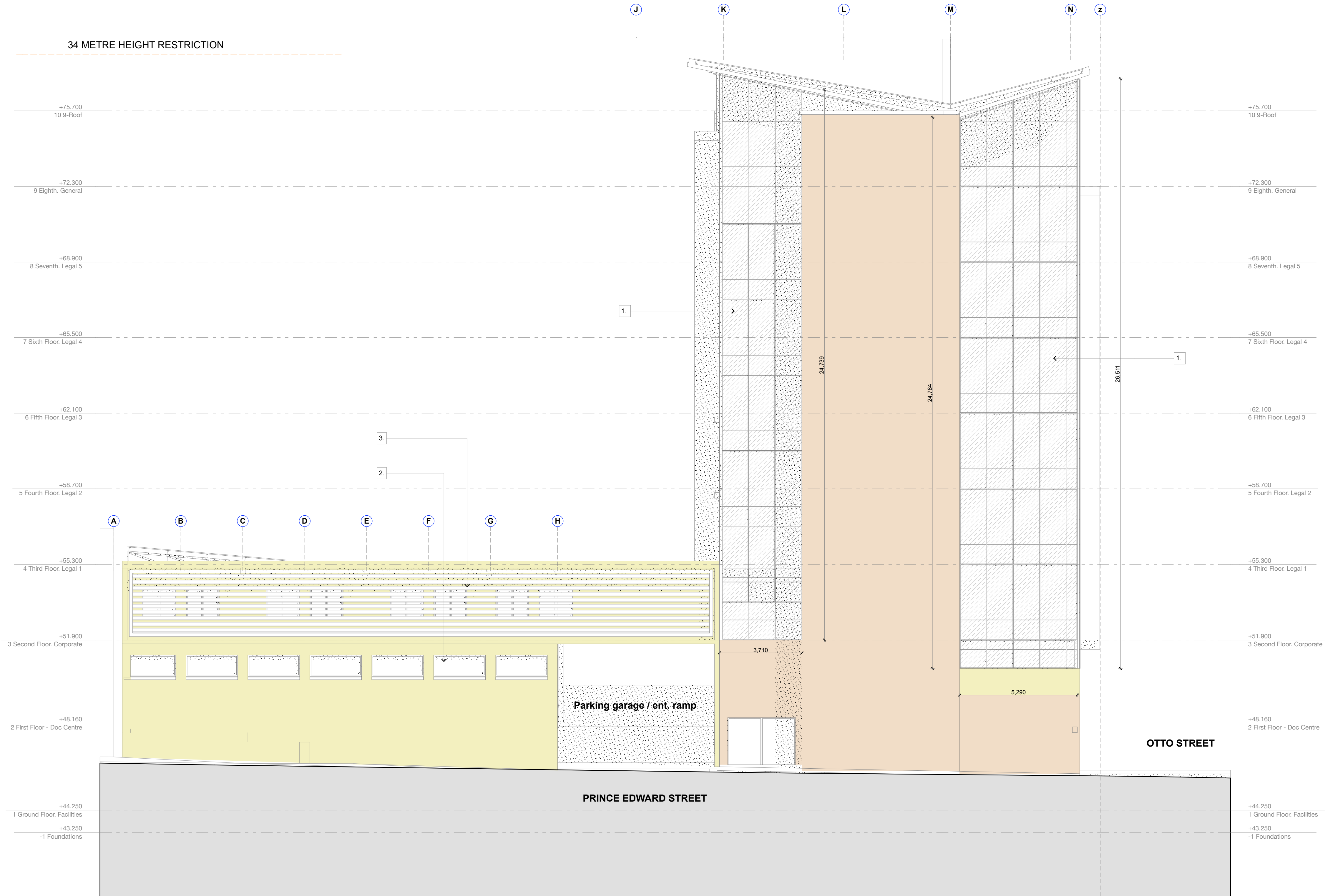


CONSTRUCTION NOTES:

1. FLUSH GLAZED CURTAIN WALL SYSTEM TO FACADE ENGINEERS DESIGN & DETAIL
2. ALUMINIUM CASEMENT WINDOW TO ARCHITECTS DETAIL & SPEC.
3. ALUMINIUM 70S SUN LOUVRE SYSTEM, BY HUNTER DOUGLAS TO ARCHITECTS SPEC.
4. ALUMINIUM 250AF AERO WING SUN LOUVRE, FIXED POSITION, BY HUNTER DOUGLAS TO ARCHITECTS SPEC.



Client Representative:

Signed: Date
Project Manager



public works

Department:
Public Works
REPUBLIC OF SOUTH AFRICA

DIRECTOR-GENERAL
Mr MOROKA

consultant/departmental
Urban Architects (Pty) Ltd
500 Esther Roberts Road
Glenwood, Durban
T 031 2052600 / 031 205 3057
F 031 2052637

Signed: P. Dekker
SACAP Reg. PR Arch # 5594 Date

disoipline
Architectural

service

REHABILITATION OF
ILD DPW WORKSHOP.
PIETERMARITZBURG

PART DEMOLITION AND CONSTRUCTION OF
NEW DPP OFFICES FOR THE NPA
AT 286 PIETERMARITZ STREET, PIETERMARITZBURG
ON PORTIONS 7, 8, 9, 10 OF
LOT 2428 OF PIETERMARITZBURG

WCS number
050033

drawing title
SKETCH DESIGN
SOUTH EAST ELEVATION
(PRINCE EDWARD ST.)

SUBMISSION DRAWING

ref.no 100 designed

scale 1 : 100 drawn

date 20.02.2013 checked

type number

drawing number 1. _ _ 62 - C.draft