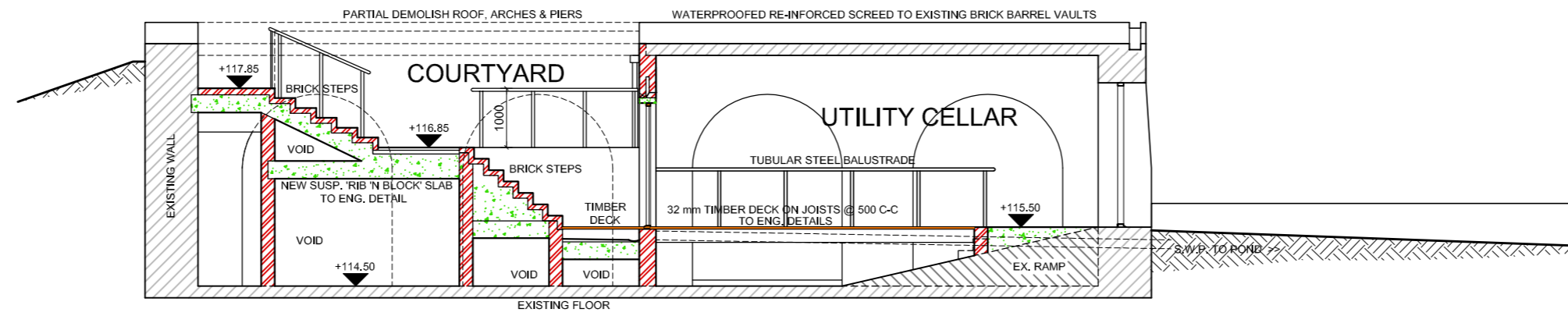
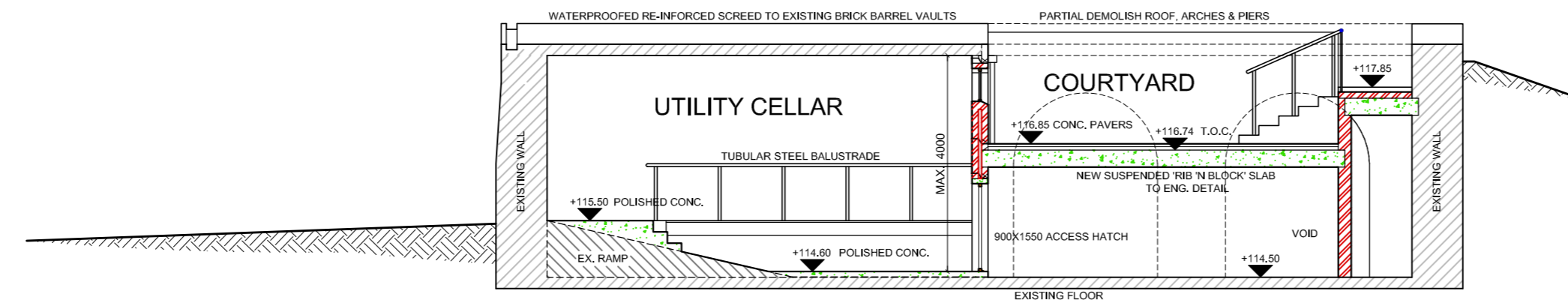


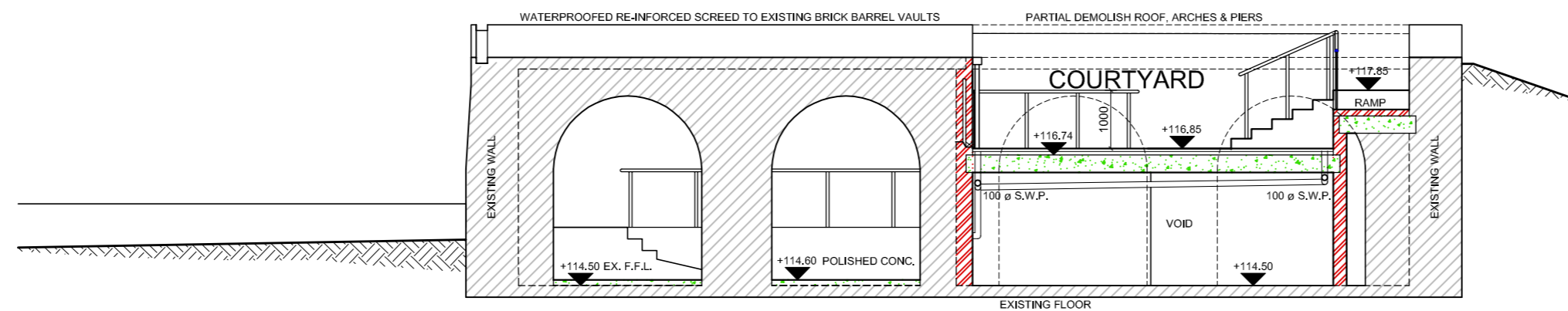
SECTION O-O



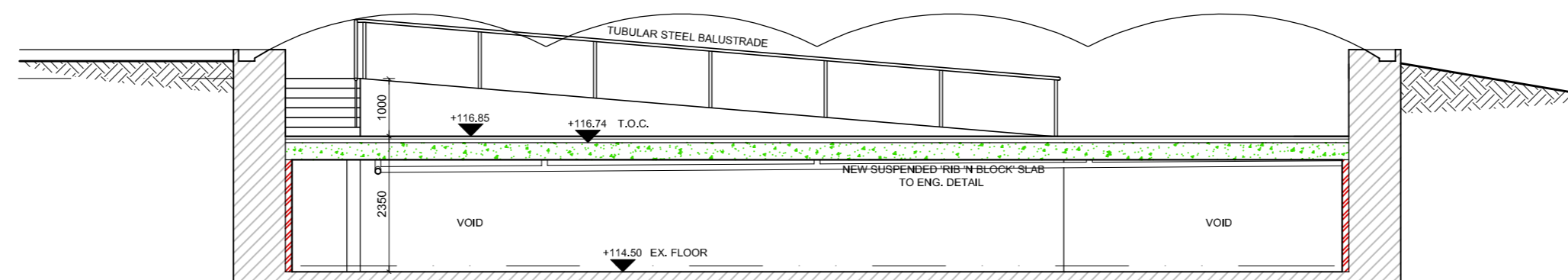
SECTION P-P



SECTION Q-Q



SECTION R-R



SECTION S-S

CONSTRUCTION NOTES: RESERVOIR

EXISTING RESERVOIR STRUCTURE TO BE PART DEMOLISHED, PART RETAINED AND REPAIRED FOR USE AS UTILITY/STORAGE WITH PV AND SOLAR WATER PANELS ON ROOF AND AS A SUNKEN COURTYARD FOR PLANTER BOXES. BRICKS FROM DEMOLITION TO BE CLEANED AND RE-USED IN NEW WORK.

**ROOF:**  
EXISTING VAULTED BRICK ROOF TO BE REINFORCED WITH SCREED TOPPING TO STRUCT ENGR'S DETAILS.  
POLYURETHANE WATERPROOFING.

**WALLS**  
ALL STRUCTURAL WALLS TO STRUCT ENGR'S DETAILS.  
NEW CAVITY WALL: BUTTERFLY TIES AT MAX 450mm CRS VERTICALLY 600mm CRS HORIZONTALLY. ARCHED BRICK REINFORCED LINTEL TO ENGR'S DETAILS.  
STEPPED DERIGULUM MEMBRANE DPC AT EXTERNAL FFL CONTINUOUS WITH VERTICAL MEMBRANE DOWN TO SCREED LEVEL AND 150mm HORIZONTALLY, TORCHED ON.

**FLOORS: CONCRETE**  
UTILITY BUILDING: 100mm CONCRETE SURFACE BED ON DPM ON EXISTING.  
SUNKEN COURTYARD: CONCRETE RIB AND BLOCK SUSPENDED FLOOR TO STRUCT ENGR'S DETAILS.  
50X400X400 CEMENT PAVERS + LATERITE GRAVEL ON SCREED TO FALL MAX 60mm MIN 25mm TO FULL FLOW OUTLETS.

**FOUNDATIONS**  
REINFORCEMENT OF EXISTING FLOOR OR INDEPENDENT FOOTINGS IF REQUIRED TO STRUCT. ENGR'S DETAILS.

**STAIRCASES + RAMP**  
DETAILS OF STAIRS + RAMP AS SHOWN ON DRAWINGS. BALUSTRADES GMS TUBE 1M HIGH

**TIMBER DECK**  
INTERNAL DECK: 32mm HARDWOOD DECKING ON JOISTS AT 500 CRS TO STRUCT ENGR'S DETAILS.  
EXTERNAL DECK LANDING: DECKING ON CHAMFERED 50mmX75mm BEARERS ON SCREED TO FALL TO FLANGED PIPE OUTLET TO SWP.

Notes:


Rev.	Description:	Date:
A	rev. stairs & ramp; omit pergola; new floor/deck levels & timber deck; rev. doors; equipment layout;	22 Feb
B	rev. deck level, stairs & ramp, drainage, spec. ; add window	28 Feb

**Rod Gurzynski Architect**  
Pr Arch CIA SACAP  
cor Main + Katzenellenbogen Rd Noordhoek  
PO Box 48140 Kommetjie 7976  
Tel: 021 789 2023  
email: rod@ecoprogram.co.za

**ALTERATION EXISTING RESERVOIR ON ERF 10373 CONSTANTIA**

Client: **GLEN DIRK ESTATE (PTY) LTD**

Title: **RESERVOIR SECTIONS**

Scale: 1 : 100	Drawing no. 65.07	Rev no. B
Date: 28/02/2015		

**COUNCIL SUBMISSION DRAWING**