

OFFICE COPY

2583/59

S.G. No.

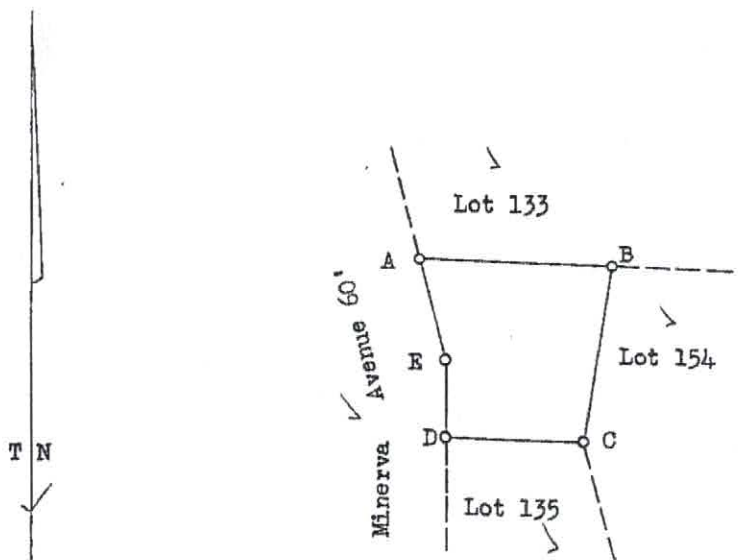
APPROVED

J. P. Williams
 Surveyor General.
 27 MAY 1959

GENERAL PLAN No. 111 x 13 ✓

SIDES	Eng. Feet	ANGLES OF DIRECTION
AB	118.00 ✓	271.28.00 ✓
BC	111.52 ✓	8.12.40 ✓
CD	86.12 ✓	91.10.00 ✓
DE	48.06 ✓	181.10.10 ✓
EA	65.86 ✓	165.06.50 ✓

See G.P.



Reg. Div.
FU

DESCRIPTION OF BEACONS

A, B, C, D, E are 1/2" galvanized iron pipes.

Scale 1:1250

The figure A, B, C, D, E represents 10,890 Square Feet

S

LOT 134 GLENASHLEY TOWNSHIP

of land being

situate in the County of VICTORIA

Province of NATAL.

Surveyed in April 1950-May 1951, by me *J. P. Williams* and January, 1952

Land Surveyor.

<p>This diagram relates to No. T9355/1959 Registrar of Deeds.</p>	<p>The original diagram is S.G. No. 5283/51 relating to Cert. of Amended Title on Consolidation No. 5493/1952 ✓</p>	<p>File No. 688/14 ✓ Survey Records 500/1951 ✓ Compilation H.4. FU-7 A3.2A/0. Degree Sheet 59. Fu 7A ✓ General Plan No. 4201/51</p>
--	---	--

This is the G.P.

B.U.P.