

APPENDIX E: STAKEHOLDER ENGAGEMENT

APPENDIX E1: PROOF OF ADVERTISEMENT & SITE NOTICE

**NOTICE OF APPLICATIONS FOR ENVIRONMENTAL AUTHORISATION, WASTE MANAGEMENT LICENCE,
ATMOSPHERIC EMISSIONS LICENCE AND WATER USE LICENCE
PROPOSED GAMSBERG SMELTER PROJECT AND UPGRADE OF BULK WATER PIPELINE
NORTHERN CAPE PROVINCE**

Black Mountain Mining (Pty) Ltd, part of Vedanta Zinc International, owns and operates the Gamsberg Zinc Mine which is an open pit zinc mine with a concentrator plant and associated infrastructure. The Gamsberg Zinc Mine is located 14km east of the town of Aggeneys, Northern Cape Province, on the farms Bloemhoek 61 Ptn 1, Gams 60 Ptn 1 and Aroams 57 RE. Black Mountain Mining (Pty) Ltd proposes to construct a new zinc smelter as well as upgrade the existing underground bulk water pipeline, owned by Sedibeng Water, from the Orange River (near Pella Town) to the smelter.

GAMSBERG SMELTER

Black Mountain Mining (Pty) Ltd proposes to construct an electrolytic zinc smelter for treating concentrates produced from the existing zinc mining operations and associated ore concentrator plant. The proposed smelter will produce 300 000 tons per annum (tpa) of zinc ingots and other products. The primary support services and infrastructure associated with the proposed smelter project includes internal access roads, overhead transmission lines, and a secure landfill site. Potable water would be sourced from Sedibeng Water and electricity from the Eskom Aggeneys substation. Liquid effluent from the site will be treated on-site by sewage and effluent treatment plants. The proposed smelter will be constructed in close proximity to the current Gamsberg Mine concentrator plant.

BULK WATER PIPELINE

A new 39 km bulk water pipeline is proposed to be constructed from the existing Sedibeng Water Orange River abstraction point to replace the old underground pipeline. The existing Pella Water Works would also be upgraded. The new pipeline would be constructed within the existing pipeline servitude. The existing Eskom transmission line and Eskom substation providing power to the booster pump station for the pipeline would also need to be upgraded. Notice is hereby given of Black Mountain Mining (Pty) Ltd's and Sedibeng Water's intention to apply for Environmental Authorisations which include:

Gamsberg Smelter Project (Applicant: Black Mountain Mining (Pty) Ltd):

- Environmental Authorisation (Scoping and EIA) in terms of the National Environmental Management Act, 1998 (Act 107 of 1998) (NEMA) and the associated Regulations (GNR 982 of 2014);
- A Waste Management Licence (WML) in terms of the National Environmental Management Waste Act, 2008 (Act 59 of 2008) (NEMWA);
- A Water Use Licence Application (WULA) in terms of the National Water Act, 1998 (Act 36 of 1998) (NWA); and
- An Atmospheric Emissions Licence (AEL) in terms of the National Environmental Management; Air Quality Act (Act 39 of 2004).

Bulk Water Supply Project (Applicant: Sedibeng Water Board):

- Environmental Authorisation (Basic Assessment) in terms of the NEMA, 1998 (Act 107 of 1998) and the associated Regulations (GNR 982 of 2014); and
- A General Authorisation (GA) application for the proposed new bulk water pipeline in terms of the NWA

SLR Consulting (South Africa) (Pty) Ltd (SLR) has been appointed as the environmental assessment practitioner responsible for undertaking the environmental regulatory processes and conducting public participation.

All stakeholders are invited to register as an Interested and Affected Party (I&AP). You **must** register as an I&AP if you would like to receive more information or wish to participate in the environmental assessment of the project. In order to receive all future notifications about the project please ensure that you register as an I&AP by **15 October 2019**. For any Project related queries please contact:

Candice Sadan

Email: csadan@slrconsulting.com

Tel: 021 461 1118

Fax: 011 467 0978

Post: PO Box 1596, Cramerview, 2060

Note: If using post, please contact us telephonically to notify us of your submission.



**KENNISGEWING VAN AANSOEKE OM OMGEWINGSMAGTIGING, AFVALBESTUURLISENSIE,
ATMOSFERIESE EMISSIELISENSIE EN WATERGEBRUIKLISENSIE
BEOOGDE GAMSBERG SMELTERYPROJEK EN OPGRADERING VAN
GROOTMAATWATERPYPLYN
NOORD-KAAPROVINSIE**

Black Mountain Mining (Edms.) Bpk., deel van Vedanta Zinc International, besit en bedryf die Gamsberg Sinkmyn, wat 'n opgroefsinkmyn is met 'n konsentratoraanleg en verwante infrastruktuur. Die Gamsberg Sinkmyn is 14 km oos van die dorp Aggeneys, Noord-Kaapprovinsie, op Gedeelte 1 van Bloemhoek 61, Gedeelte 1 van Gams 60 en die restant van Aroams 57. Black Mountain Mining (Edms.) Bpk. beoog om 'n nuwe sinksmeltery op te rig, asook om die bestaande ondergrondse grootmaatwaterpyplyn, wat deur Sedibeng Water besit word, van die Oranjerivier af (naby die dorp Pella) na die smeltery toe op te gradeer.

GAMSBERG SMELTERY

Black Mountain Mining (Edms.) Bpk. beoog om 'n elektrolitiese sinksmeltery op te rig vir die behandeling van konsentrate wat uit die bestaande sinkmynboubedrywigheide en verwante ertskonsentratoraanleg geproduseer word. Die beoogde smeltery sal 300 000 ton per jaar (tpa) sinkgietsblokke en ander produkte produseer. Die primêre steundienste en infrastruktuur wat met die beoogde smelteryprojek gepaard gaan, sluit die interne toegangspaaie, oorhoofse transmissiekraglyne en 'n beveiligde stortingsterrein in. Drinkwater sal by Sedibeng Water bekom word en elektrisiteit by Eskom se Aggeneys Substasie. Vloeiwater afloopwater van die terrein af sal intern deur riool- en afloopwaterbehandelingsaanlegte behandel word. Die beoogde smeltery sal naby die huidige Gamsberg-myn se konsentratoraanleg opgerig word.

GROOTMAATWATERPYPLYN

'n Nuwe 39 km grootmaatwaterpyplyn word beoog vir oprigting vanaf die bestaande Sedibeng Water Oranjerivier onttrekkingspunt om die ou ondergrondse pyplyn te vervang. Die bestaande Pella Waterwerke sal ook opgegradeer word. Die nuwe pyplyn sal binne-in die bestaande pyplynserwituut opgerig word. Die bestaande Eskomtransmissiekraglyne en Eskom substasie wat krag aan die aanjaagpompstasie vir die pyplyn voorsien, sal ook opgegradeer moet word.

Kennis geskied hiermee van Black Mountain Mining (Edms.) Bpk. en Sedibeng Water se voorneme om aansoek te doen om Omgewingsmagtigings wat die volgende insluit:

Gamsberg Smelteryprojek (Applikant: Black Mountain Mining (Edms.) Bpk.):

- Omgewingsmagtiging (Bestekopname en OIE) ingevolge die Nasionale Wet op Omgewingsbestuur, 1998 (Wet 107 van 1998) (NEMA) en die verwante Regulasies (Staatskennisgewing R982 van 2014);
- 'n Afvalbestuurlisensie (ABL) ingevolge die Nasionale Wet op Omgewingsbestuur: Afval, 2008 (Wet 59 van 2008) (NEM:WA);
- 'n Watergebruiklisensie (WULA) ingevolge die Nasionale Waterwet, 1998 (Wet 36 van 1998) (NWW); en
- 'n Atmosferiese emissielisensie (AEL) ingevolge die Nasionale Wet op Omgewingsbestuur: Luggehalte (Wet 39 van 2004).

Grootmaatwatertoeverprojek (Applikant: Sedibeng Waterraad):

- Omgewingsmagtiging (Basiese Evaluering) ingevolge NEMA, 1998 (Wet 107 van 1998) en die verwante Regulasies (Staatskennisgewing R982 van 2014); en
- 'n Aansoek om Algemene Magtiging (AM) vir die beoogde nuwe grootmaatwaterpyplyn ingevolge die NWW.

SLR Consulting (South Africa) (Edms.) Bpk. (SLR) is aangestel as die omgewingsevalueringstryksyn wat verantwoordelik is vir die onderneming van die regulatoriese omgewingsprosesse en die openbare deelnameprosesse. Alle belanghebbende word genooi om as 'n belangstellende en geaffekteerde party (B&GP) te registreer. U **moet** as 'n B&GP registreer as u meer inligting wil ontvang of aan die projek se omgewingsimpakevaluering wil deelneem. Ten einde alle toekomstige kennisgewings oor die projek te ontvang, moet u asseblief sorg dat u teen **15 Oktober 2019** as 'n B&GP registreer. Vir enige projekverwante navrae, tree asseblief in verbinding met:

Candice Sadan

E-pos: csadan@slrconsulting.com

Tel: 021 461 1118, Faks: 011 467 0978

Posadres: Posbus 1596, Cramerview, 2060

Let wel: As u die posdiens gebruik, moet u ons asseblief telefonies kontak om ons in kennis te stel van u indiening.



#OPBOK



9 NOVEMBER 2019



5 Gang Ete
5 Gaskunstenars
Kontantkroeg



VIP Kaartjies R1 000.00
(Spesiale VIP Pakket ingesluit)
Normale kaartjies R400 & R500



Refentse | Armand Steenkamp | Real 4 Real
Bryan Arundel

Besprekings by SCA (Christelle) by 027 7183377 of 073 3616 420



PLATINUM ONLINE
027 712 1242



BEKOSTIGBARE
INTERNET VIR ALMAL



DANKIE OUMA RICKY EN PROFESSOR

My naam is Mary van Okiep naby Springbok in die Noord-Kaap. Ek is vyftig jaar oud en het 6 kinders. Ek is een van daardie mense wat in die verlede verskriklik swaargeky het. Ek het in die straat geslaap onder bome, en nagte sonder kos gegaan. Ek het baie skuld gehad.

Baie genesers het my al teleruggestel, maar vriende het my aangeraai om Ouma Ricky en Prof te kontak en dit is presies wat ek gedoen het. Sy het 'n sterk gebed gedoen en my onmiddellik gehelp. Sy het my skuld laat verdwyn en my geseën met geluk en my gehlp om vinnig geld in my bankrekening te kry.

Vandag besit ek baie besighede, is gelukkig getroud en het ses groot huise met die beste voertuie in die mark.

Mense wat met finansiële probleme, liefdes probleme, geluk, dobbel en nog meer sukkel kan Ouma Ricky vertrou want ander dokters mag jou dalk net teleurstel. Dit is nie maklik om te glo nie maar wonderwerke bestaan met Ouma Ricky en Prof.

Bel/SMS of Whatsapp hierdie nommer:

065 657 6962

MAGTIGE VROU MAMA ERINA

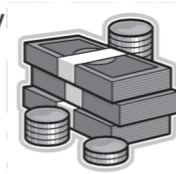
Ek is Cherry, 47 jaar oud van die Noord-Kaap. Ek bedank vir mama Erina omdat sy my lewe verander het. Ek het geen werk gehad nie en my familie en vriende het my verstoot. Ek het hope skuld gehad en my drie kinders het op straat sonder kos geslaap.

Ek het mama gekontak en sy het my gesond gemaak en sterk gebede aan my opgedra wat geluk vir my gebring het. Ek het nou my eie besigheid, huis en motor. Geld is nie meer vir my 'n probleem nie. Ek is gelukkig getroud en my swaarkry is verby.

Mama Erina is die enigste betroubare persoon om al jou probleme sonder teleurstelling op te los.

Skakel / Whatsapp mama Erina nou by

073 966 2419



NOTICE OF APPLICATIONS FOR ENVIRONMENTAL AUTHORISATION, WASTE MANAGEMENT LICENCE, ATMOSPHERIC EMISSIONS LICENCE AND WATER USE LICENCE PROPOSED GAMSBERG SMELTER PROJECT AND UPGRADE OF BULK WATER PIPELINE NORTHERN CAPE PROVINCE

Black Mountain Mining (Pty) Ltd, part of Vedanta Zinc International, owns and operates the Gamsberg Zinc Mine which is an open pit zinc mine with a concentrator plant and associated infrastructure. The Gamsberg Zinc Mine is located 14km east of the town of Aggeneys, Northern Cape Province, on the farms Bloemhoek 61 Ptn 1, Gams 60 Ptn 1, and Aroams 57 RE. Black Mountain Mining (Pty) Ltd proposes to construct a new zinc smelter as well as upgrade the existing underground bulk water pipeline, owned by Sedibeng Water, from the Orange River (near Pella Town) to the smelter.

GAMSBERG SMELTER

Black Mountain Mining (Pty) Ltd proposes to construct an electrolytic zinc smelter for treating concentrates produced from the existing zinc mining operations and associated ore concentrator plant. The proposed smelter will produce 300 000 tons per annum (tpa) of zinc ingots and other products. The primary support services and infrastructure associated with the proposed smelter project includes internal access roads, overhead transmission lines, and a secure landfill site. Potable water would be sourced from Sedibeng Water and electricity from the Eskom Aggeneys Substation. Liquid effluent from the site will be treated on-site by sewage and effluent treatment plants. The proposed smelter will be constructed in close proximity to the current Gamsberg Mine Concentrator plant.

BULK WATER PIPELINE

A new 39 km bulk water pipeline is proposed to be constructed from the existing Sedibeng Water Orange River abstraction point to replace the old underground pipeline. The existing Pella Water Works would also be upgraded. The new pipeline would be constructed within the existing pipeline servitude. The existing Eskom transmission line and Eskom Substation providing power to the booster pump station for the pipeline would also need to be upgraded.

Notice is hereby given of Black Mountain Mining (Pty) Ltd's and Sedibeng Water's intention to apply for Environmental Authorisations which include:

Gamsberg Smelter Project (Applicant: Black Mountain Mining (Pty) Ltd):

- * Environmental Authorisation (Scoping and EIA) in terms of the National Environmental Management Act, 1998 (Act 107 of 1998) (NEMA) and the associated Regulations (GNR 982 of 2014);
- * A Waste Management Licence (WML) in terms of the National Environmental Management Waste Act, 2008 (Act 59 of 2008) (NEMWA);
- * A Water Use Licence Application (WULA) in terms of the National Water Act, 1998 (Act 36 of 1998) (NWA); and
- * An Atmospheric Emissions Licence (AEL) in terms of the National Environmental Management; Air Quality Act (Act 39 of 2004).

Bulk Water Supply Project (Applicant: Sedibeng Water Board):

- * Environmental Authorisation (Basic Assessment) in terms of the NEMA, 1998 (Act 107 of 1998) and the associated Regulations (GNR 982 of 2014); and
- * A General Authorisation (GA) application for the proposed new bulk water pipeline in terms of the NWA

SLR Consulting (South Africa) (Pty) Ltd (SLR) has been appointed as the environmental assessment practitioner responsible for undertaking the environmental regulatory processes and conducting public participation.

All stakeholders are invited to register as an Interested and Affected Party (I&AP). You **must** register as an I&AP if you would like to receive more information or wish to participate in the environmental assessment of the project. In order to receive all future notifications about the project please ensure that you register as an I&AP by **15 October 2019**. For any Project related queries please contact:

Candice Sadan

Tel: 021 461 1118

Post: PO Box 1596, Cramerview, 2060

Email: csadan@slrconsulting.com

Fax: 011 467 0978

Note: If using post, please contact us telephonically to notify us of your submission.



KENNISGEWING VAN AANSOEKE OM OMGEWINGSMAGTIGING, AFVALBESTUURLISENSIE, ATMOSFERIESE EMISSIELISENSIE EN WATERGEBRUIKLISENSIE BEOOGDE GAMSBERG SMELTERYPROJEK EN OPGRADERING VAN GROOTMAATWATERPYPLYN NOORD-KAAPROVINSIE

Black Mountain Mining (Edms.) Bpk., deel van Vedanta Zinc International, besit en bedryf die Gamsberg Sinkmyn, wat 'n oopgroefsinkmyn is met 'n konsentratoraanleg en verwante infrastruktuur. Die Gamsberg Sinkmyn is 14 km oos van die dorp Aggeneys, Noord-Kaapprovinsie, op Gedeelte 1 van Bloemhoek 61, Gedeelte 1 van Gams 60, en die restant van Aroams 57. Black Mountain Mining (Edms.) Bpk. beoog om 'n nuwe sinksmeltery op te rig, asook om die bestaande ondergrondse grootmaatwaterpyplyn, wat deur Sedibeng Water besit word, van die Oranjerivier af (naby die dorp Pella) na die smeltery toe op te gradeer.

GAMSBERG SMELTERY

Black Mountain Mining (Edms.) Bpk. beoog om 'n elektrolitiese sinksmeltery op te rig vir die behandeling van konsentrate wat uit die bestaande sinkmynboubedrywighede en verwante erts-konsentratoraanleg geproduseer word. Die beoogde smeltery sal 300 000 ton per jaar (tpa) sinkgietblokke en ander produkte produseer. Die primêre steundienste en infrastruktuur wat met die beoogde smelteryprojek gepaard gaan, sluit die interne toegangspaaie, oorhoofse transmissiekraglyne en 'n beveiligde stortingsterrein in. Drinkwater sal by Sedibeng Water bekom word en elektrisiteit by Eskom se Aggeneys Substasie. Vloeiwater afloopwater van die terrein af sal intern deur riool- en afloopwaterbehandelingsaanlegte behandel word. Die beoogde smeltery sal naby die huidige Gamsberg-myn se Konsentratoraanleg opgerig word.

GROOTMAATWATERPYPLYN

'n Nuwe 39 km grootmaatwaterpyplyn word beoog vir oprigting vanaf die bestaande Sedibeng Water Oranjerivier onttrekkingspunt om die ou ondergrondse pyplyn te vervang. Die bestaande Pella Waterwerke sal ook opgegradeer word. Die nuwe pyplyn sal binne-in die bestaande pyplynserwituut opgerig word. Die bestaande Eskomtransmissiekraglyne en Eskom Substasie wat krag aan die aanjaagpompstasie vir die pyplyn voorsien, sal ook opgegradeer moet word.

Kennis geskied hiermee van Black Mountain Mining (Edms.) Bpk. en Sedibeng Water se voorneme om aansoek te doen om Omgewingsmagtigings wat die volgende insluit:

Gamsberg Smelteryprojek (Applikant: Black Mountain Mining (Edms.) Bpk.):

- * Omgewingsmagtiging (Bestekopname en OIE) ingevolge die Nasionale Wet op Omgewingsbestuur, 1998 (Wet 107 van 1998) (NEMA) en die verwante Regulasies (Staatskennisgewing R982 van 2014);
- * 'n Afvalbestuurlisensie (ABL) ingevolge die Nasionale Wet op Omgewingsbestuur: Afval, 2008 (Wet 59 van 2008) (NEM:WA);
- * 'n Watergebruiklisensie (WULA) ingevolge die Nasionale Waterwet, 1998 (Wet 36 van 1998) (NWW); en
- * 'n Atmosferiese emissielisensie (AEL) ingevolge die Nasionale Wet op Omgewingsbestuur: Luggehalte (Wet 39 van 2004).

Grootmaatwatertoevoerprojek (Applikant: Sedibeng Waterraad):

- * Omgewingsmagtiging (Basiese Evaluering) ingevolge NEMA, 1998 (Wet 107 van 1998) en die verwante Regulasies (Staatskennisgewing R982 van 2014); en
- * 'n Aansoek om Algemene Magtiging (AM) vir die beoogde nuwe grootmaatwaterpyplyn ingevolge die NWW.

SLR Consulting (South Africa) (Edms.) Bpk. (SLR) is aangestel as die omgewingsevalueringpraktisyn wat verantwoordelik is vir die onderneming van die regulatoriese omgewingsprosesse en die openbare deelnameprosesse.

Alle belanghebbers word genooi om as 'n belangstellende en geaffekteerde party (B&GP) te registreer. U **moet** as 'n B&GP registreer as u meer inligting wil ontvang of aan die projek se omgewingsimpakevaluering wil deelneem. Ten einde alle toekomstige kennisgewings oor die projek te ontvang, moet u asseblief sorg dat u teen **15 Oktober 2019** as 'n B&GP registreer. Vir enige projekverwante navrae, tree asseblief in verbinding met:

Candice Sadan

Tel: 021 461 1118

Posadres: Posbus 1596, Cramerview, 2060

E-pos: csadan@slrconsulting.com

Faks: 011 467 0978

Let wel: As u die posdiens gebruik, moet u ons asseblief telefonies kontak om ons in kennis te stel van u indiening.



 Citrusdal Cellars (Pty) Ltd 'n groot- en kleinhandel drankverspreider in die Wes- en Noordkaap beskikbaar oor die volgende vakante posisie in Kakamas.

Assistent Drankwinkel Bestuurder Kakamas Wijnhuis

Die aangewese kandidaat sal te same met die bestuurder van die winkel, verantwoordelik wees om die winkel in geheel as 'n suksesvolle besigheid eenheid te bestuur en is verantwoordelik vir die volgende spesifieke areas: Voorraad, Debiture, Krediteure, Personeel aangeleenthede, Kliëntediens en Kontantvloei. Die persoon moet onafhanklik, gedissiplineerd en outonoom funksioneer en netheid en stiptelike is van uiterste belang.

Die suksesvolle applikant moet aan die volgende vereistes voldoen:
 - Ten minste 3 JAAR ONDERVINDING IN DIE DRANKBEDRYF en/of SOORTGELYKE POSISIE
 - Matriek sertifikaat
 - Rekonaargeletterd in MS Office pakket
 - Goeie bedryf- en personeel bestuursvaardigheid
 - Netjies, noukeurig en georganiseerde werk metodiek
 - Goeie kommunikasie vaardigheid
 - Sosiaal aanpasbaar
 - Kode E/EB bestuurslisensie
 - Eie betroubare vervoer
 - Sterk administratief
 - Sterk interpersoonlike vaardighede.

In ruil hiervoor bied Citrusdal Cellars 'n mededingende vergoedingspakket met 'n prestasie gekoppelde bonus struktuur.

U kan u aansoek versend aan 'n dekrief en afskrif van ID dokument stuur per epos aan: Nicole Visser nicole@ccellars.co.za Tel: 022-921 3400

Alternatiewelik kan u dit faks na 022-9213188.

Die sluitingsdatum vir aansoeke is **30 September 2019**.

Let daarop dat slegs applikante wat aan die voorgenoemde vereistes en kwalifikasies voldoen se aansoeke oorweeg sal word. Indien u geen terugvoer binne twee weke na die sluitingsdatum ontvang het nie, kan u aanvaar dat u aansoek onsuksesvol was.

Nuwe waardasieproses vir DKM begin

GEMSBOK-UPINGTON: Die Dawid Kruiper Munisipaliteit gaan eersdaags begin om alle einedomme binne sy regsgebied te laat waardeer.

Munisipale Eien-domsbelastingwet, Wet 6 van 2004, skryf aan 'n Munisipaliteit voor hoe daar gehandel moet word met eien-domsbelasting en alles wat daarmee saam gaan.

Volgens artikels 30 en 32 van die wet moet 'n munisipaliteit alle eiendomme binne sy regsgebied laat waardeer en is 'n waardasierol vir 'n periode van 5 jaar geldig. 'n Munisipaliteit kan egter aansoek doen vir die verlenging van die rol.

Dawid Kruiper Munisipaliteit se huidige rol

het op 1 Julie 2014 in werking getree en daar is goedkeuring verkry vir die verlenging van die rol tot 30 Junie 2020. Die beteken dat Dawid Kruiper Munisipaliteit se nuwe waardasierol op 1 Julie 2020 geïmplementeer moet word.

Artikel 33 verplig 'n munisipaliteit om 'n waardeerder aan te wys wat verantwoordelik sal wees vir die opstel van die waardasierol. Die Raad het die firma Makgagga Property Valuers aangestel om hierdie taak uit te voer.

Die waardeerder moet nou begin met die insameling van inligting wat benodig word om die waardasies uit te voer.

Alhoewel die wet aandui dat inspeksie op 'n eiendom nie verpligtend is nie, is dit vir die waardeerder belangrik om sekere inligting aangaande die eiendom te verkry om 'n ingeligte besluit te neem.

Die waardeerder sal data-insamelaars aanstel wat hom sal help om die inligting in te samel. Die waardeerder sowel as die data-insamelaars sal van identifikasie kaarte voorsien word wat op versoek getoon moet word.

Kragtens artikel 41 mag die waardeerder en data-insamelaars elke dag tussen 07:30 en 19:00, Sondag en publieke vakansiedae uitgesluit, enige perseel betree vir die insameling van die nodige inligting.

Hierdie persone sal dus binne die volgende paar dae met die insameling van die data begin.

Die munisipaliteit sal 'n proses van publieke deelname volg waar die publiek op hoogte gebring sal word van die prosesse en hul die geleentheid sal kry om hul vrae te vra. Besonderhede van die deelname proses sal op 'n later stadium deur middel van die pers bekend gemaak word.

Ingevolge artikel 49 moet die munisipale bestuurder die publiek inlig wanneer die waardasierol beskikbaar is vir insae en die publiek uitnoui om beswaar aan te teken teen enige saak in, of weglating uit die waardasierol. Dit sal gedoen word deur middel van 'n skrywe aan elke eienaar asook kennisgewings in die plaaslike pers.

Die besware, wat teen die gestelde sluitingsdatum ontvang is, word dan terug verwys na die waardeerder vir hersiening. Elke beswaarmaker en eienaar sal skriftelik in kennis gestel word van die uitkoms van die beswaar.

'n Persoon wat beswaar aangeteken het teen 'n saak weergegee of weggelaat in die waardasierol en nie tevrede is met die uitkoms van die beswaar nie, mag in terme van artikel 54 daarteen appellêre. Appellêre word hanteer deur 'n appellêrad, wat vir elke streek, deur Provinsie aangestel word.

Die publiek is welkom om met hul vrae en kommentaar in hierdie verband te skakel met die Raad se balasting-afdeling. Dit kan by die volgende telefoonnummers 0543387089, 0543387097 of 0543387094 gedoen word.

MUNISIPALITEIT KAI IGARIB MUNICIPALITY	
KENNISGEWING K006/2019	NOTICE N006/2019
<p>VOORGESTELDE HERSONERING & OPHEFFING VAN TITELAKTE VOORWAARDES: PERSEEL 2083, KAKAMAS SUID NEDERSITTING, GELEË BINNE DIE MUNISIPALE GEBIED, KAI IGARIB</p> <p>Kennis geskied hiermee dat die Kai IGarib Munisipaliteit die volgende grondgebruiksaansoek ingedien ingevolge die Kai IGarib Bywet vir Grondgebruikbeplanning 2015, saamgelees met die Kai IGarib Munisipale Skemaregulasies, ontvang het, vir oorweging:</p> <p>Eiendom: Perseel 2083, Kakamas Suid Nedersitting, geleë in die Afdeling Kenhardt, Provinsie Noord-Kaap. Ligging: Die betrokke eiendom is ongeveer 2,5 km noord-noord-oos van Kakamas geleë. Eienaar: Die Mas Boerdery (Pty) Ltd (96/11749/07) Aansoeker: Macroplan (Len Jacobus Fourie) Sonering: Landbouzone I & Oordsone I Aard van aansoek: 1. Die hersonering van 'n 8560m² gedeelte van Perseel 2083, Kakamas Suid Nedersitting vanaf Landbouzone I na Landbouzone II (7930m²) en Speciale Sone (630m²). 2. Die opheffing van titelvoorwaardes - [T32184 / 1999], P.2-3, §I.B (1) & (2).</p>	<p>PROPOSED REZONING & REMOVAL OF RESTRICTIVE TITLE DEED CONDITIONS: PLOT 2083, KAKAMAS SOUTH SETTLEMENT LOCATED WITHIN THE JURISDICTION OF KAI IGARIB MUNICIPALITY</p> <p>Notice is hereby given that the Kai IGarib Municipality has received the following land use application, submitted in terms of the Kai IGarib Land Use Planning By-law of 2015 and the applicable Kai IGarib Municipal Scheme Regulations, for consideration:</p> <p>Property: Plot 2083, Kakamas South Settlement located in the Kenhardt Division, Northern Cape Province. Location: The involved property is situated approximately 2.5km north-north-east of Kakamas. Owner: Die Mas Boerdery (Pty) Ltd (96/11749/07) Applicant: Macroplan (Len Jacobus Fourie) Zoning: Agricultural Zone I & Resort Zone I Nature of application: 1. The rezoning of a 8560m² portion of Plot 2083, Kakamas South Settlement from Agricultural Zone I to Agricultural Zone II (7930m²) & Special Zone (630m²). 2. The removal of restricted title deed conditions - [T32184/1999], P.2-3, §I.B (1) & (2).</p>
<p>Nadere besonderhede (toegang tot die volledige aansoek) is verkrygbaar by die kantoor van die Munisipale Bestuurder (Keimoes Kantoor) gedurende normale kantoorure (07:30 – 13:00 en 14:00 – 16:30) of by Mnr. Johnny Mackay (E-pos: mackayj@kaig-arib.gov.za ; Tel: 054 461 6700 / 078 802 8938 / 071 868 2184). Besware teen die aansoek, indien enige, moet aldaar skriftelik by die Munisipale Bestuurder ingedien word om hom voor of op 18 Oktober 2019 te bereik. Indien enige persoon wat kommentaar wil lewer/vertoë wil rig, nie kan skryf nie, kan sodanige persoon gedurende normale kantoorure voor of op 18 Oktober 2019 by Mnr. Johnny Mackay se kantoor (Keimoes kantoor) aanmeld, waar sodanige persoon se kommentaar/ vertoë op skrif gestel sal word.</p>	<p>Full particulars are obtainable from the office of the Municipal Manager (Keimoes Office), during normal office hours (07:30 – 13:00 en 14:00 – 16:30) or at Mr. Johnny Mackay (E-mail: mackayj@kaig-arib.gov.za ; Tel: 054 461 6700 / 078 802 8938 / 071 868 2184). Objections against the application, if any, must be lodged in writing to the Municipal Manager on or before 18 October 2019. Any person with objections against the application, who is unable to write, can during normal office hours on or before 18 October 2019, report to Mr. Johnny Mackay (Keimoes office) who will put such a person's objections in writing.</p>
MUNICIPAL MANAGER: Kai IGarib Municipality, PO Box 8, Keimoes 8860	

KENNISGEWING VAN AANSOEKE OM OMGEWINGSMAGTIGING, AFVALBESTUURLISENSIE, ATMOSFERIESE EMISSIELISENSIE EN WATERGEBRUIKLISENSIE
BEOOGE GAMSBERG SMELTERYPROJEK EN OPGRADERING VAN GROOTMAATWATERPYLYN NOORD-KAAPROVINSIE
<p>Black Mountain Mining (Edms.) Bpk., deel van Vedanta Zinc International, besit en bedryf die Gamsberg Sinkmyn, wat 'n oopgroefsinkmyn is met 'n konsentratooraanleg en verwante infrastruktuur. Die Gamsberg Sinkmyn is 14 km oos van die dorp Aggeneys, Noord-Kaapprovinsie, op Gedeelte 1 van Bloemhoek 61, Gedeelte 1 van Gams 60 en die restant van Aroams 57. Black Mountain Mining (Edms.) Bpk. beoog om 'n nuwe sinksmeltery op te rig, asook om die bestaande ondergrondse grootmaatwaterpylyn, wat deur Sedibeng Water besit word, van die Oranjerivier af (naby die dorp Pella) na die smeltery toe op te gradeer.</p> <p>GAMSBERG SMELTERY Black Mountain Mining (Edms.) Bpk. beoog om 'n elektrolitiese sinksmeltery op te rig vir die behandeling van konsentrate wat uit die bestaande sinkmynboubedrywighede en verwante erkskonstratooraanleg geproduseer word. Die beoogde smeltery sal 300 000 ton per jaar (tpa) sinkgietblokke en ander produkte produseer. Die primêre steundiende en infrastruktuur wat met die beoogde smelteryprojek gepaard gaan, sluit die interne toegangspaaie, oorhoofse transmissiekraglyne en 'n beveiligde stortingsterrein in. Drinkwater sal by Sedibeng Water bekom word en elektrisiteit by Eskom se Aggeneys Substasie. Vloeiwater afloopwater van die terrein af sal intern deur riool- en afloopwaterbehandelingsaanlegte behandel word. Die beoogde smeltery sal naby die huidige Gamsberg-myn se konsentratooraanleg opgerig word.</p> <p>GROOTMAATWATERPYLYN 'n Nuwe 39 km grootmaatwaterpylyn word beoog vir oprigting vanaf die bestaande Sedibeng Water Oranjerivier onttrekkingspunt om die ou ondergrondse pylyn te vervang. Die bestaande Pella Waterwerke sal ook opgegradeer word. Die nuwe pylyn sal binne-in die bestaande pylynserwituut opgerig word. Die bestaande Eskomtransmissiekraglyne en Eskom substasie wat krag aan die aanjaagpompstasie vir die pylyn voorsien, sal ook opgegradeer moet word.</p> <p>Kennis geskied hiermee van Black Mountain Mining (Edms.) Bpk. en Sedibeng Water se voorneme om aansoek te doen om Omgewingsmagtigings wat die volgende insluit:</p> <p>Gamsberg Smelteryprojek (Applikant: Black Mountain Mining (Edms.) Bpk.):</p> <ul style="list-style-type: none"> • Omgewingsmagtiging (Bestekopname en OIE) ingevolge die Nasionale Wet op Omgewingsbestuur, 1998 (Wet 107 van 1998) (NEMA) en die verwante Regulasies (Staatskennisgewing R982 van 2014); • 'n Afbalbestuurlisensie (ABL) ingevolge die Nasionale Wet op Omgewingsbestuur: Afbal, 2008 (Wet 59 van 2008) (NEM:WA); • 'n Watergebruiklisensie (WULA) ingevolge die Nasionale Waterwet, 1998 (Wet 36 van 1998) (NWW); en • 'n Atmosferiese emissielisensie (AEL) ingevolge die Nasionale Wet op Omgewingsbestuur: Luggehalte (Wet 39 van 2004). <p>Grootmaatwatertoevervoerprojek (Applikant: Sedibeng Waterraad):</p> <ul style="list-style-type: none"> • Omgewingsmagtiging (Basiese Evaluering) ingevolge NEMA, 1998 (Wet 107 van 1998) en die verwante Regulasies (Staatskennisgewing R982 van 2014); en • 'n Aansoek om Algemene Magtiging (AM) vir die beoogde nuwe grootmaatwaterpylyn ingevolge die NWW. <p>SLR Consulting (South Africa) (Edms.) Bpk. (SLR) is aangestel as die omgewingsbeoordelingspraktisyn wat verantwoordelik is vir die onderneming van die regulatoriese omgewingsprosesse en die openbare deelnameprosesse. Alle belanghebbende word genooi om as 'n belangstellende en geaffekteerde party (B&GP) te registreer. U moet as 'n B&GP registreer as u meer inligting wil ontvang van die projek se omgewingsimpakevaluering wil deelneem. Ten einde alle toekomstige kennisgewings oor die projek te ontvang, moet u asseblief sorg dat u teen 15 Oktober 2019 as 'n B&GP registreer. Vir enige projekverwante navrae, tree asseblief in verbinding met:</p> <p>Candice Sadan E-pos: csadan@slrconsulting.com Tel: 021 461 1118, Faks: 011 467 0978 Posadres: Posbus 1596, Cramerview, 2060 Let wel: As u die posdiens gebruik, moet u ons asseblief telefonies kontak om ons in kennis te stel van u indiening.</p>
<p>NOTICE OF APPLICATIONS FOR ENVIRONMENTAL AUTHORISATION, WASTE MANAGEMENT LICENCE, ATMOSPHERIC EMISSIONS LICENCE AND WATER USE LICENCE</p> <p>PROPOSED GAMSBERG SMELTER PROJECT AND UPGRADE OF BULK WATER PIPELINE NORTHERN CAPE PROVINCE</p> <p>Black Mountain Mining (Pty) Ltd, part of Vedanta Zinc International, owns and operates the Gamsberg Zinc Mine which is an open pit zinc mine with a concentrator plant and associated infrastructure. The Gamsberg Zinc Mine is located 14km east of the town of Aggeneys, Northern Cape Province, on the farms Bloemhoek 61 Ptn 1, Gams 60 Ptn 1 and Aroams 57 RE. Black Mountain Mining (Pty) Ltd proposes to construct a new zinc smelter as well as upgrade the existing underground bulk water pipeline, owned by Sedibeng Water, from the Orange River (near Pella Town) to the smelter.</p> <p>GAMSBERG SMELTER Black Mountain Mining (Pty) Ltd proposes to construct an electrolytic zinc smelter for treating concentrates produced from the existing zinc mining operations and associated ore concentrator plant. The proposed smelter will produce 300 000 tons per annum (tpa) of zinc ingots and other products. The primary support services and infrastructure associated with the proposed smelter project includes internal access roads, overhead transmission lines, and a secure landfill site. Potable water would be sourced from Sedibeng Water and electricity from the Eskom Aggeneys substation. Liquid effluent from the site will be treated on-site by sewage and effluent treatment plants. The proposed smelter will be constructed in close proximity to the current Gamsberg Mine concentrator plant.</p> <p>BULK WATER PIPELINE A new 39 km bulk water pipeline is proposed to be constructed from the existing Sedibeng Water Orange River abstraction point to replace the old underground pipeline. The existing Pella Water Works would also be upgraded. The new pipeline would be constructed within the existing pipeline servitude. The existing Eskom transmission line and Eskom substation providing power to the booster pump station for the pipeline would also need to be upgraded. Notice is hereby given of Black Mountain Mining (Pty) Ltd's and Sedibeng Water's intention to apply for Environmental Authorisations which include:</p> <p>Gamsberg Smelter Project (Applicant: Black Mountain Mining (Pty) Ltd):</p> <ul style="list-style-type: none"> • Environmental Authorisation (Scoping and EIA) in terms of the National Environmental Management Act, 1998 (Act 107 of 1998) (NEMA) and the associated Regulations (GNR 982 of 2014); • A Waste Management Licence (WML) in terms of the National Environmental Management Waste Act, 2008 (Act 59 of 2008) (NEMWA); • A Water Use Licence Application (WULA) in terms of the National Water Act, 1998 (Act 36 of 1998) (NWA); and • An Atmospheric Emissions Licence (AEL) in terms of the National Environmental Management; Air Quality Act (Act 39 of 2004). <p>Bulk Water Supply Project (Applicant: Sedibeng Water Board):</p> <ul style="list-style-type: none"> • Environmental Authorisation (Basic Assessment) in terms of the NEMA, 1998 (Act 107 of 1998) and the associated Regulations (GNR 982 of 2014); and • A General Authorisation (GA) application for the proposed new bulk water pipeline in terms of the NWA <p>SLR Consulting (South Africa) (Pty) Ltd (SLR) has been appointed as the environmental assessment practitioner responsible for undertaking the environmental regulatory processes and conducting public participation.</p> <p>All stakeholders are invited to register as an Interested and Affected Party (I&AP). You must register as an I&AP if you would like to receive more information or wish to participate in the environmental assessment of the project. In order to receive all future notifications about the project please ensure that you register as an I&AP by 15 October 2019. For any Project related queries please contact:</p> <p>Candice Sadan Email: csadan@slrconsulting.com Tel: 021 461 1118 Fax: 011 467 0978 Post: PO Box 1596, Cramerview, 2060 Note: If using post, please contact us telephonically to notify us of your submission.</p>

SLR

SLR

Appendix 5B - Site notice in English and Afrikaans and photographic proof of placement

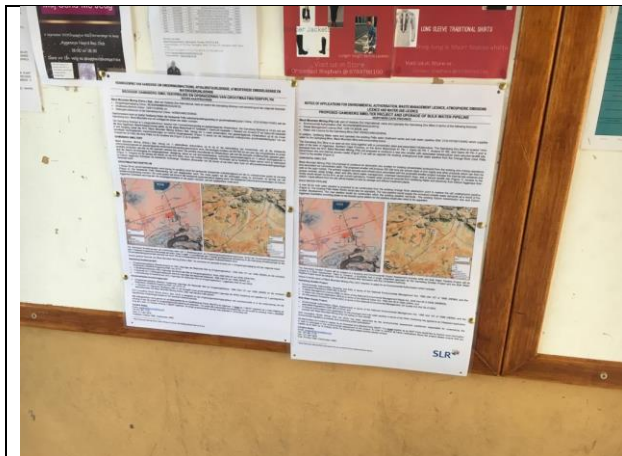


Plate 1: OK Aggeneys

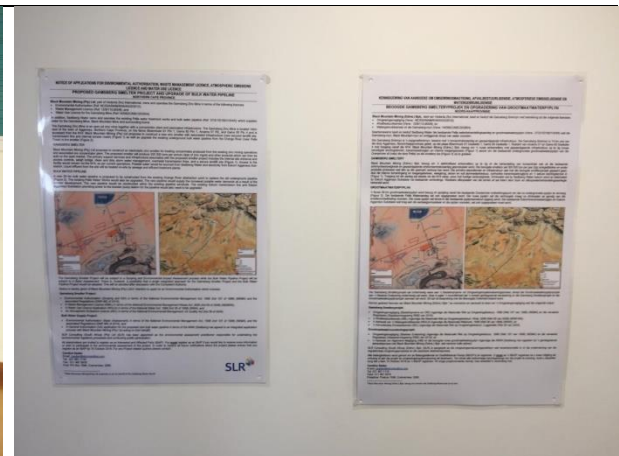


Plate 2: Gamsberg Mine

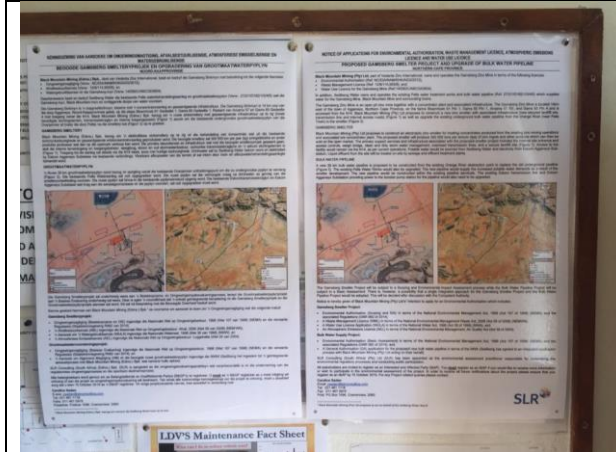


Plate 3: Black Mountain Mine

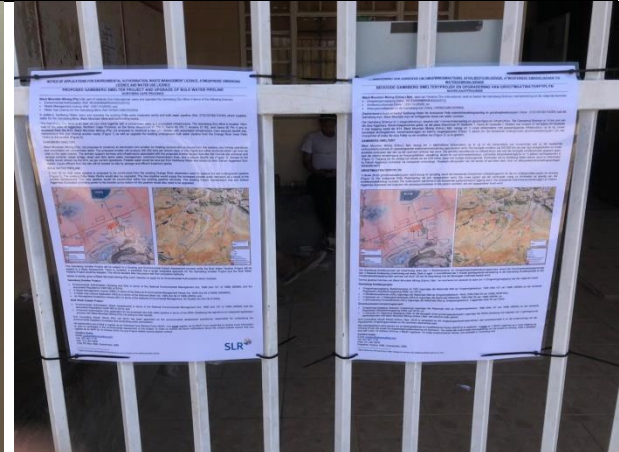


Plate 4: Pella Shop

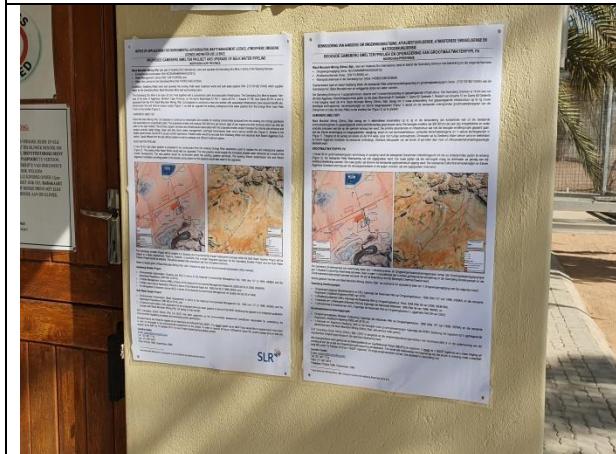


Plate 5: Pella Clinic

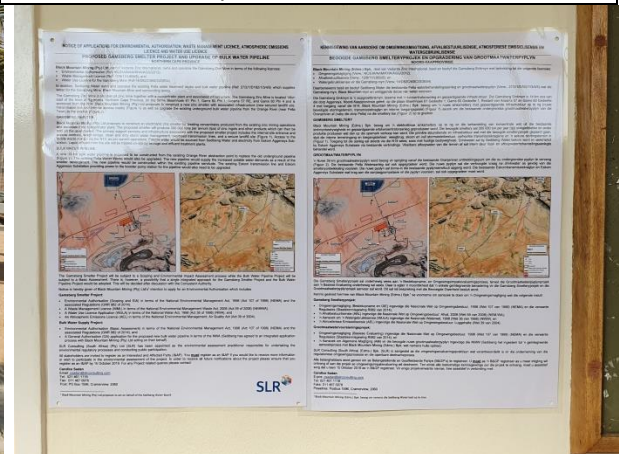


Plate 6: Khai Ma Municipality, Pofadder

APPENDIX E2: PROOF OF I&AP NOTIFICATION

BACKGROUND INFORMATION DOCUMENT

EIA FOR THE PROPOSED GAMSBERG SMELTER PROJECT, NEAR AGGENEYS NORTHERN CAPE

OCTOBER 2019

INTRODUCTION

Black Mountain Mining (Pty) Ltd, part of the Vedanta Zinc International, owns and operates the Gamsberg Zinc Mine in terms of the following licences:

- Environmental Authorisation (Ref: NC/EIA/NAM/KHA/AGG/2012);
- Waste Management Licence (Ref: 12/9/11/L955/8); and
- Water Use Licence for the Gamsberg Mine (Ref:14/D82C/ABCGL/2654).

The Gamsberg Zinc Mine is an up to 10 million ton per annum (mtpa) open pit zinc mine together with a concentrator plant and associated infrastructure. The Gamsberg Zinc Mine is located 14km east of the town of Aggeneys, Northern Cape Province, on the farms Bloemhoek 61 Ptn 1, Gams 60 Ptn 1, and Aroams 57 RE.

Black Mountain Mining (Pty) Ltd is proposing to construct a new zinc smelter (Figure 1) and associated infrastructure (new secured landfill site, transmission line and access roads). The Sedibeng Water underground pipeline from the Orange River (near Pella Town) to the smelter (Figure 2) also requires upgrade to support the smelter project. The upgrade of the old underground pipeline is required to improve the pipeline stability and to cater for additional bulk water supply.

ENVIRONMENTAL AUTHORISATION PROCESS

In order for the proposed project (zinc smelter, associated infrastructure and upgrade of the bulk water pipeline) to proceed an Environmental and Social Impact Assessment (EIA) is required, including an application phase, scoping phase, and an Environmental Impact Assessment (EIA) phase and associated compilation of an Environmental Management Programme (EMP). The assessment is required to be undertaken in terms of the National Environmental Management Act, 107 of 1998 (NEMA) and the associated Regulations (2014). In addition to this, the proposed project will require authorisation in terms of the National Water Act, 36 of 1998, the National Environmental Management: Waste Act 59 of 2008 (NEM:WA) as well as the National Environmental Management: Air Quality Act 39 of 2004 (NEM:AQA).

SLR Consulting (South Africa) (Pty) Ltd (SLR), an independent firm of environmental consultants, has been appointed to manage the environmental regulatory processes and conduct the public participation in support of the applications for the proposed zinc smelter and upgrade of the associated bulk water pipeline.

PURPOSE

This Background Information Document (BID) provides initial information to stakeholders about the EIA process to be undertaken for the proposed project.

YOUR ROLE

You have been identified as an interested and affected party (I&AP) who would like to be informed about the proposed project and have input into the EIA process.

You have an opportunity to review this Background Information Document and to provide your initial comments to SLR for incorporation in the EIA process.

You will also be given the opportunity to register as a stakeholder, provide input at a public meeting, and to review and comment on the Scoping Report and EIA Report.

All comments will be recorded and included in the reports submitted to the Competent Authorities for decision-making.

HOW TO RESPOND

Responses to this document can be submitted by means of the attached comments sheet and/or through communication with the person listed below.

WHO TO CONTACT

SLR Consulting

Candice Sadan

(021) 461 1118 (Tel)

(011) 467 0978 (Fax)

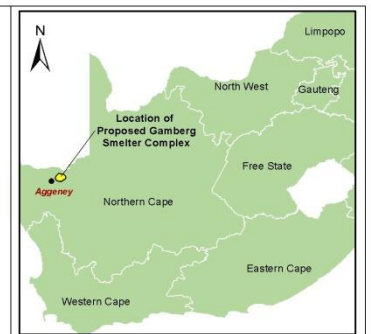
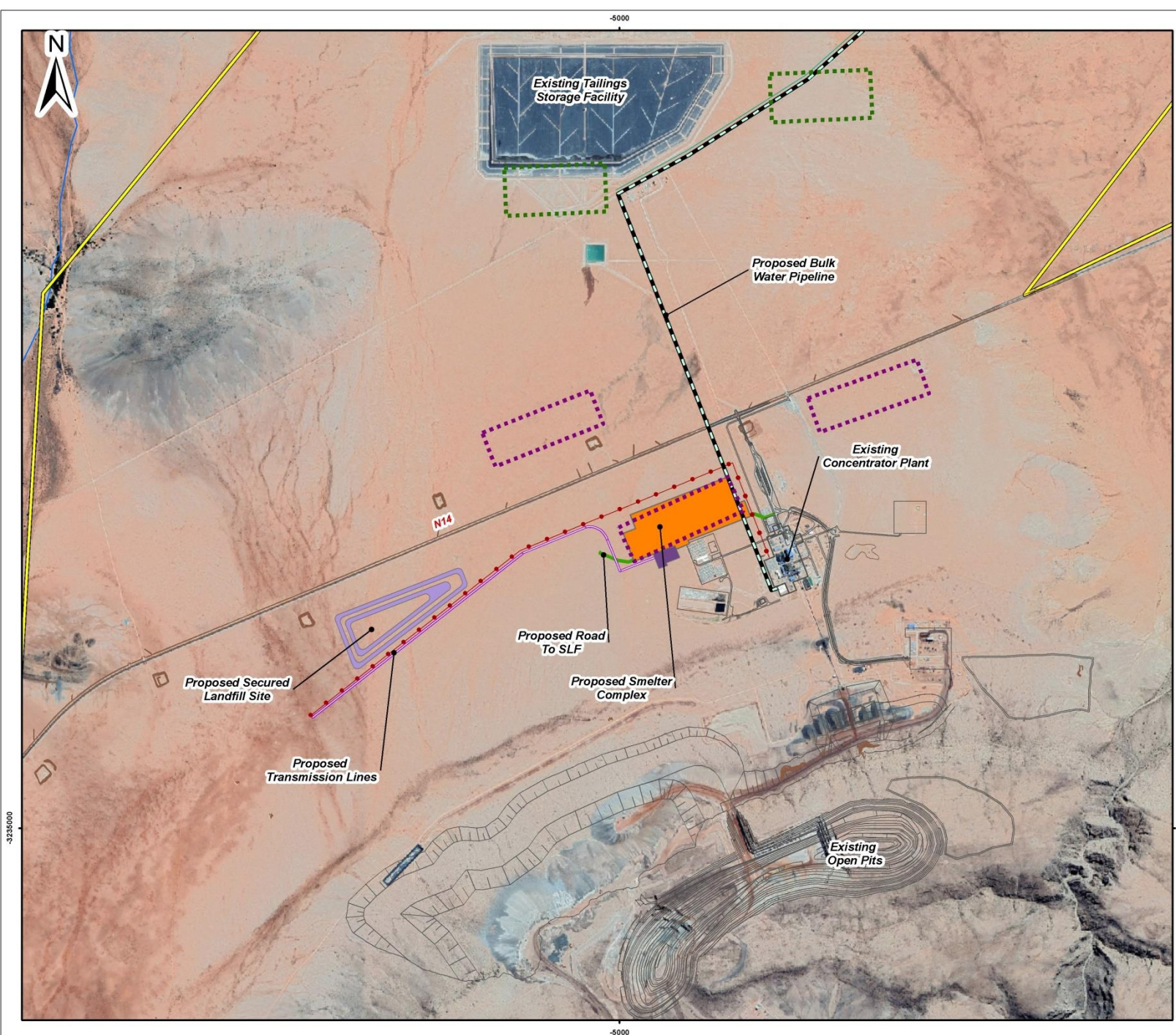
csadan@slrconsulting.com

PO Box 1596, Cramerview 2060

Please submit initial comments to SLR by 15 November 2019. You will also have an opportunity to comment on the Scoping and EIA reports.

All registered I&APs will be notified when public meetings are taking place.





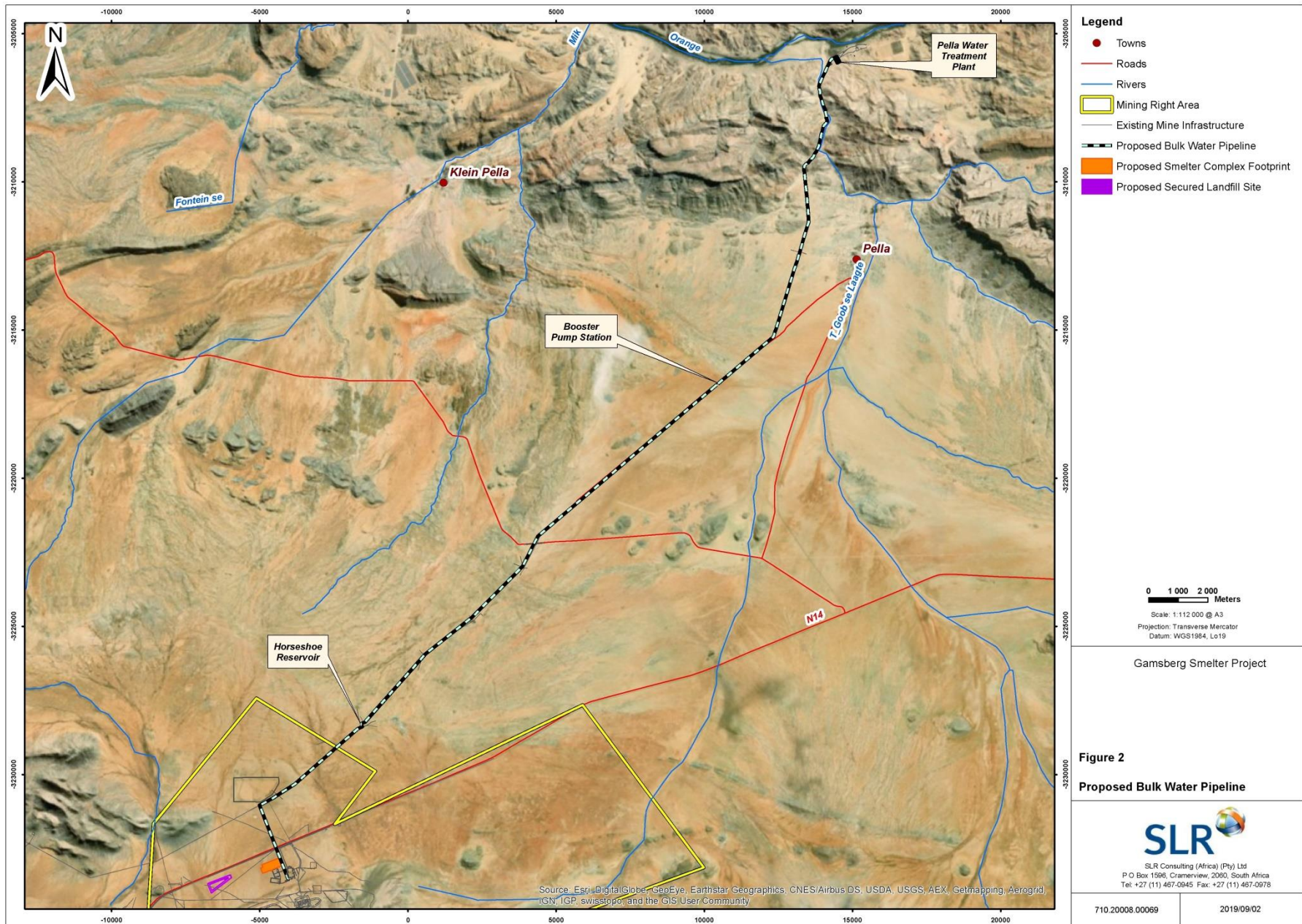
- Legend**
- Mining Right Area
 - Existing Infrastructure
 - Alternative SLF Locations
 - Alternative Smelter Complex Locations
- Proposed Infrastructure**
- Bulk Water Pipeline
 - Secured Landfill Site
 - Switch Yard
 - Smelter Complex Footprint
 - Smelter Roads
 - Transmission Line
 - 66kv Transmission Line

0 200 400 Meters
 Scale: 1:23 000 @ A3
 Projection: Transverse Mercator
 Datum: WGS1984, Lo23

Gamsberg Smelter Project

Figure 1
Proposed Gamsberg Smelter Complex

SLR
 SLR Consulting (Africa) (Pty) Ltd
 P O Box 1596, Cramerview, 2060, South Africa
 Tel: +27 (11) 487-0945 Fax: +27 (11) 487-0978



PURPOSE OF THIS DOCUMENT

This BID has been prepared by SLR to inform you about:

- * The proposed project;
- * The baseline environment of the project area;
- * The EIA process to be followed;
- * Possible environmental and social issues; and
- * How you can have input into the process.

GAMSBERG SMELTER PROJECT OVERVIEW

INTRODUCTION

The Gamsberg Zinc Mine is an existing mine producing up to 4 mtpa of ore with associated waste rock dumps; mine machinery fleet and workshops. The concentrator plant (Figure 3) would produce up to 300 000 tons of zinc (metal in concentrate) per annum with associated stockpile areas, tailings facility and supporting infrastructure (i.e. water supply distribution network, laboratories, sewage works and an office complex). Water is currently extracted from the Orange River and transferred to the Gamsberg Zinc Mine via the existing aboveground Sedibeng Water pipeline.



Figure 3. Gamsberg Mine Existing Infrastructure

MOTIVATION

In order to add value to the zinc concentrate being produced at the Gamsberg Zinc Mine, Black Mountain Mining (Pty) Ltd wishes to develop a smelter and produce higher value zinc ingots for export. This is in line with the Government of South Africa's National Industrial Policy Framework that aims to attract Foreign Direct Investment, fully beneficiate minerals and export of value-added commodities.

GAMSBERG SMELTER PROJECT

Black Mountain Mining (Pty) Ltd is proposing to construct an electrolytic zinc smelter (the "smelter") for treating concentrates produced solely from the recently commissioned ore concentrator plant. The proposed smelter will produce 300 000 tons per annum (tpa) of zinc ingots and other products which can then be sold on the open market.

The proposed smelter will generate numerous products through a process of roasting (acid forming), leaching (jarosite forming) and purification (removal of metallic impurities as well as gypsum) and electrowinning where zinc deposition on a cathode occurs. (. The deposited zinc is

stripped from the cathodes and is converted into zinc ingots in the melting and casting section.

The zinc ingots and sulphuric acid will be sold and waste products will need to be safely disposed. Mineral wastes will either be disposed of via a secured landfill site to the west of the smelter or into the existing tailings storage facility.

The primary support services and infrastructure associated with the proposed smelter project includes an internal site entrance and access controls, weigh bridge, clean and dirty storm water management, overhead transmission lines, and a secure landfill site (Figure 1). Access to the facility would remain via the N14, as per current operations. Potable water would be sourced from Sedibeng Water and electricity from Eskom Aggeneys Substation. Liquid effluent from the site is planned to be treated on-site by sewage and effluent treatment plants.

PELLA BULK WATER PIPELINE

A new 39km bulk water pipeline would be constructed from the existing Orange River abstraction point to replace the old underground pipeline (Figure 2). The existing Pella Water Works would also be upgraded. The existing Pella Water Works would also be upgraded. The new pipeline would supply the increased potable water demands as a result of the smelter development. The new pipeline will be constructed within the old underground pipeline servitude.

The existing Eskom transmission line and Eskom Substation providing power to the booster pump station for the pipeline would also need to be upgraded.

PROJECT ALTERNATIVES

The process of considering alternatives is on-going and will form part of the EIA process. Alternatives considered for the proposed project include footprint, locality and technology alternatives.

STATUS OF EXISTING ENVIRONMENT

The biodiversity of the Gamsberg inselberg and surrounds is considered as extremely sensitive and the Gamsberg Mine already has a number of 'set aside' areas and offset agreements in place as required by the existing EA issued by the Northern Cape Department of Environment and Nature Conservation (NCDENC).

In a water scarce environment groundwater resources in the Namakwa District, although more abundant than surface water features, are very important especially for livestock farmers.

In addition, the region has high unemployment rates at municipal, district and provincial level with mining activities forming the cornerstone of the local economy.

As a result the EIA will need to consider biophysical and social aspects of the area to better understand the social and environmental sensitivities.

REGULATORY PROCESS TO BE FOLLOWED

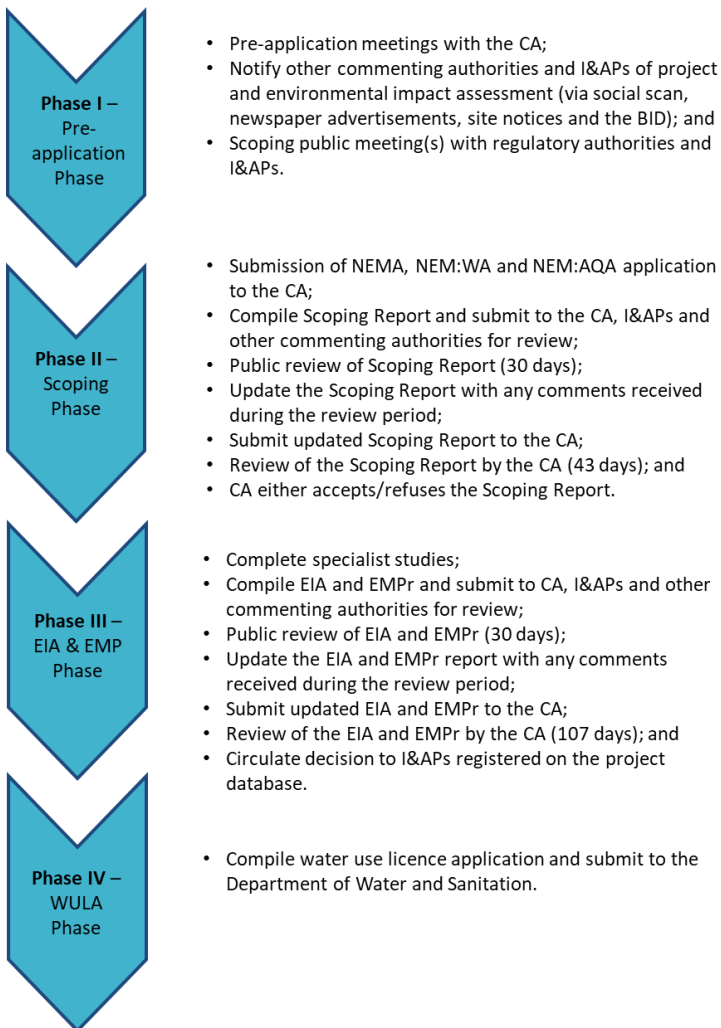
The EIA regulatory process that will be followed:

- provides information on the project;
- documents the affected environment in which it is being undertaken;
- identifies, in consultation with interested and/or affected parties (I&APs), the potential negative as well as positive impacts of the proposed project; and
- reports on management measures required to mitigate impacts to an acceptable level.

The process steps and timeframes are in accordance with the EIA Regulations, 2014 and are outlined below.

STEPS IN THE EIA PROCESS

The likely process steps and timeframes are provided below. Registered I&APs and other stakeholders on the project's database will receive notification of public participation opportunities in advance.



PARTIES INVOLVED IN THE ENVIRONMENTAL APPLICATION PROCESS

REGULATORY AUTHORITIES

- * Northern Cape Department of Environment and Nature Conservation (NCDENC);
- * Department of Human Settlements, Water and Sanitation (DHSWS).
- * Department of Minerals Resources and Energy (DMRE)
- * South Africa Heritage Resource Agency (SAHRA);
- * Department of Agriculture, Forestry and Fisheries (DAFF);
- * Northern Cape Department of Roads and Transport (NCDRT); and
- * Northern Cape Department of Rural Development and Land Reform (NCDRLR), including land claims commissioner.

LOCAL AUTHORITIES

- * Namakwa District Municipality;
- * Khai-Ma Local Municipality; and
- * Ward Councillors.

I&APs

- * Adjacent land owners and surrounding communities, land users and owners;
- * Interested Parties
- * Non-governmental organisations and associations; and
- * Parastatals.

Please let us know of additional parties that should be involved.

BLACK MOUNTAIN MINING (PTY) LIMITED

BACKGROUND INFORMATION DOCUMENT FOR THE PROPOSED GAMSBERG SMELTER AND BULK WATER PIPELINE PROJECT.

REGISTRATION AND RESPONSE FORM FOR INTERESTED AND AFFECTED PARTIES

OCTOBER 2019

DATE		TIME	
PARTICULARS OF THE INTERESTED AND AFFECTED PARTY			
NAME			
POSTAL ADDRESS			
		POSTAL CODE	
STREET ADDRESS			
		CODE	
WORK/ DAY TELEPHONE NUMBER		WORK/ DAY FAX NUMBER	
CELL PHONE NUMBER		E-MAIL ADDRESS	

PLEASE IDENTIFY YOUR INTEREST IN THE PROPOSED PROJECT

--

PLEASE WRITE YOUR COMMENTS AND QUESTIONS HERE

--

PLEASE NOTIFY SLR OF ANY OTHER INTERESTED AND AFFECTED PARTY THAT SHOULD BE INCLUDED IN THIS ESIA PROCESS.

--

Please return completed forms to:

SLR Consulting, attention: Candice Sadan

(Tel) (021) 461 1118

(011) 467 0978 (Fax)

csadan@slrconsulting.com

PO Box 1596, Cramerview 2060

Please submit initial comments to SLR by 15 November 2019. You will also have an opportunity to comment on the S&EIA. All registered I&APs will be notified when public meetings are taking place.

AGTERGRONDINLIGTINGSDOKUMENT

OIE VIR DIE BEOOGDE GAMSBERG SMELTERYPROJEK NABY

AGGENEYS, NOORD-KAAP

OKTOBER 2019

INLEIDING

Black Mountain Mining (Edms.) Bpk., deel van die Vedanta-groep, besit en bedryf die Gamsberg Sinkmyn. Die Gamsberg Sinkmyn Fase 1 word bedryf ingevolge 'n Omgewingsmagtiging (Verw.: NC/EIA/NAM/KHA/AGG/2012) gedateer 12 Augustus 2013. Die Gamsberg Sinkmyn is 'n tot 10 miljoen ton per jaar (mtpa) oopgroefsinkmyn, tesame met 'n konsentratooraanleg en verwante infrastruktuur. Die Gamsberg Sinkmyn is 14 km oos van die dorp Aggeneys, Noord-Kaapprovinsie, op Gedeelte 1 van die plaas Bloemhoek 61, Gedeelte 1 van Gams 60, en die Restant van Aroams 57.

Black Mountain Mining (Edms.) Bpk. beoog om 'n nuwe sinksmeltery (Figuur 1) en verwante infrastruktuur (nuwe beveiligde stortingsterrein, transmissiekraglyn en interne toegangspaaie) op te rig. Sedibeng Water se ondergrondse pyplyn vanaf die Oranjerivier (naby die dorp Pella) tot by die smeltery (Figuur 2) vereis ook opgradering om die smelteryprojek te ondersteun. Die opgradering van die ou ondergrondse pyplyn is nodig om die pyplyn se stabiliteit te verbeter en om voorsiening te maak vir addisionele grootmaatwatertoevoer.

OMGEWINGSMAGTIGINGSPROSES

Vir die beoogde projek (sinksmeltery, verwante infrastruktuur en opgradering van die grootmaatwaterpyplyn) om voort te gaan, word 'n Omgewings- en Maatskaplike Impakevaluering (OIE) vereis, wat 'n aansoek-, bestekopname- en Omgewingsimpakevalueringfase (OIE-fase) insluit, asook die opstel van 'n verwante Omgewingsbestuursprogram (OBP). Die evaluering moet ingevolge die Nasionale Wet op Omgewingsbestuur, 1998 (Wet 107 van 1998) (NEMA) en die verwante Regulasies (2014) onderneem word. Daarbenewens sal die beoogde projek ook 'n magtiging vereis ingevolge die Nasionale Waterwet, Wet 36 van 1998; die Nasionale Wet op Omgewingsbestuur: Afval, Wet 59 van 2008 (NEM:WA), asook die Nasionale Wet op Omgewingsbestuur: Luggehalte, Wet 39 van 2004 (NEM:AQA).

SLR Consulting (South Africa) (Edms.) Bpk. (SLR), 'n onafhanklike firma van omgewingskonsultante, is aangestel om die omgewingsreguleringsprosesse te bestuur en om die openbare deelname ter ondersteuning van die aansoeke vir die beoogde sinksmeltery en opgradering van die verwante grootmaatwaterpyplyn te onderneem.

DOELWIT

Hierdie Agtergrondinligtingsdokument (AID) bied voorlopige inligting aan belanghebbers oor die OIE-proses wat vir die beoogde projek onderneem moet word.

U ROL

U is as 'n belangstellende en geaffekteerde party (B&GP) geïdentifiseer wat ingelig wil word oor die beoogde projek en wat insae in die OIE-proses wil hê.

U het 'n geleentheid om hierdie Agtergrondinligtingsdokument na te gaan en om u voorlopige kommentaar aan SLR te voorsien vir insluiting in die OIE-proses.

U sal ook die geleentheid kry om as 'n belanghebbende te registreer, insette by 'n openbare vergadering te lewer en om die Bestekopname- en OIE-verslag na te gaan en daarop kommentaar te lewer.

Alle kommentaar sal aangeteken en ingesluit word in die verslae wat by die Bevoegde Owerhede ingedien word vir besluitneming.

HOE OM TE REAGEER

Reaksie op hierdie dokument kan ingedien word by wyse van die aangehegte kommentaarvorm en/of deur kommunikasie met die onderstaande persoon.

WIE OM TE KONTAK

SLR Consulting

Candice Sadan

Tel: 021 461 1118

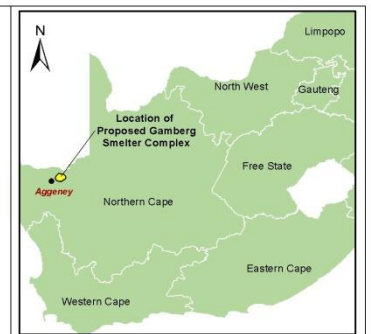
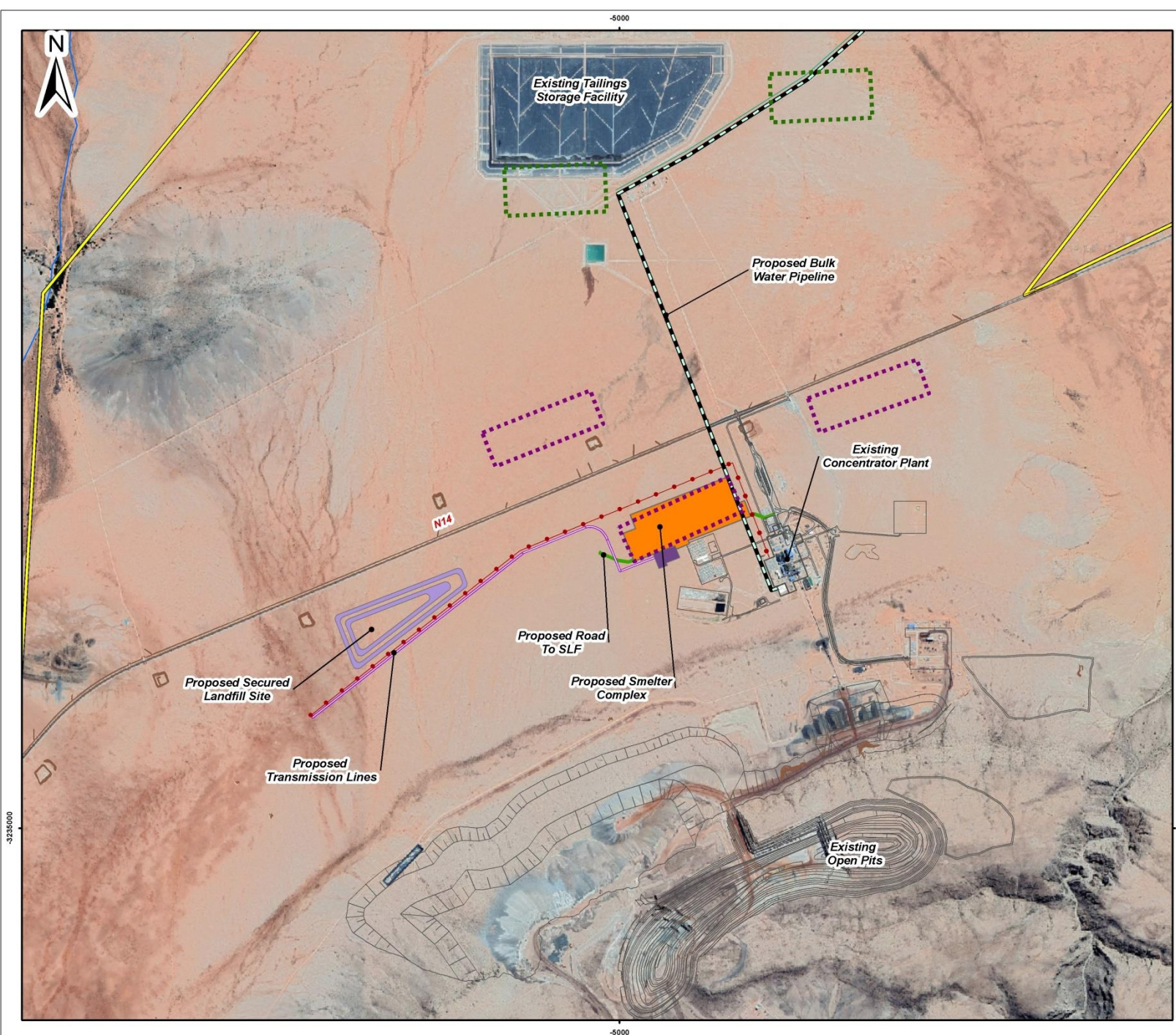
Faks: 011 467 0978

E-pos: csadan@slrconsulting.com

Pos: Posbus 1596, Cramerview 2060

Dien asseblief voorlopige kommentaar in by SLR teen 15 November 2019. U sal ook 'n geleentheid hê om kommentaar te lewer op die Bestekopname- en OIE-verslag.

Alle geregistreeerde B&GP's sal in kennis gestel word wanneer openbare vergaderings plaasvind.



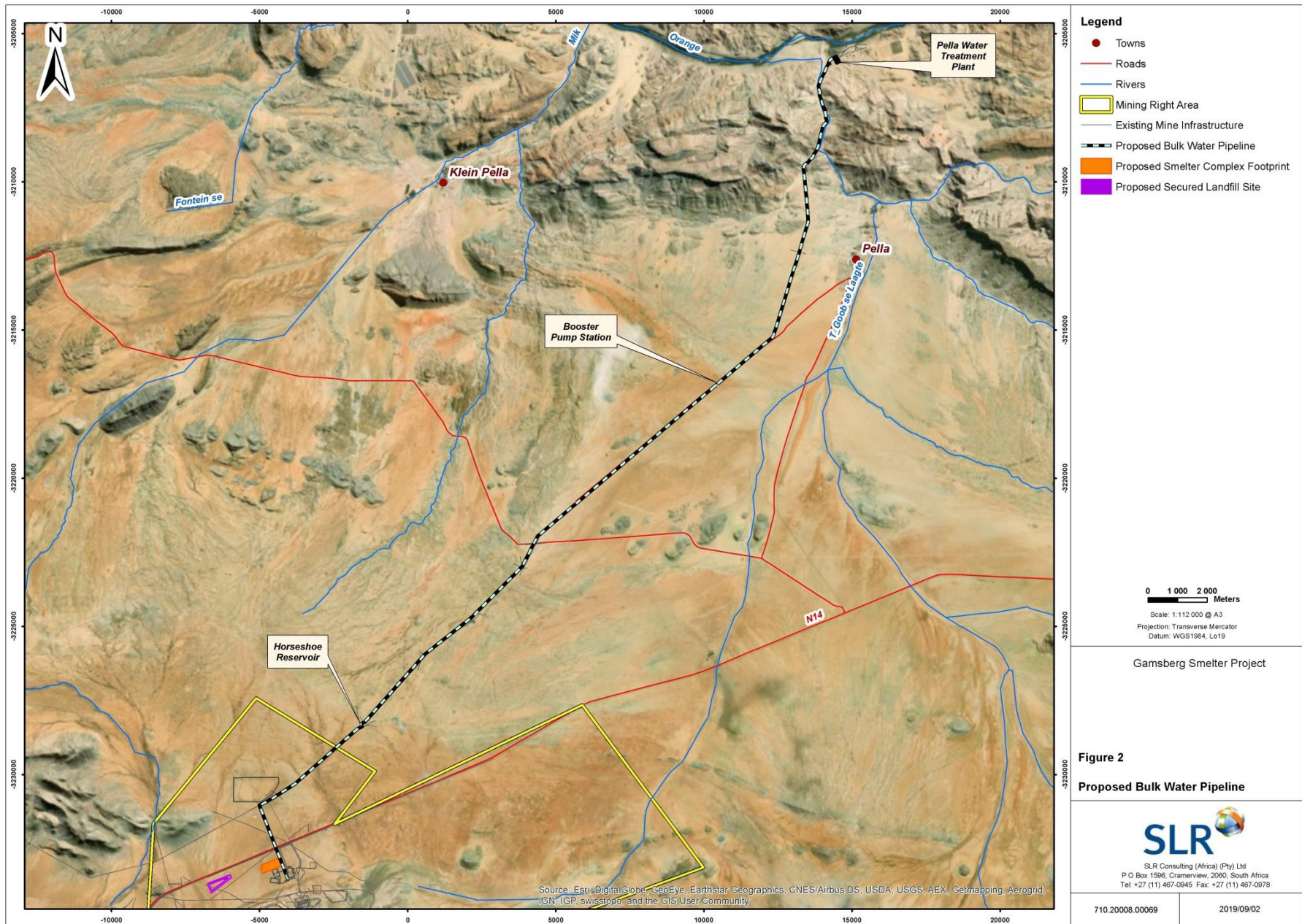
- Legend**
- Mining Right Area
 - Existing Infrastructure
 - Alternative SLF Locations
 - Alternative Smelter Complex Locations
- Proposed Infrastructure**
- Bulk Water Pipeline
 - Secured Landfill Site
 - Switch Yard
 - Smelter Complex Footprint
 - Smelter Roads
 - Transmission Line
 - 66kv Transmission Line

0 200 400 Meters
 Scale: 1:23 000 @ A3
 Projection: Transverse Mercator
 Datum: WGS1984, Lo23

Gamsberg Smelter Project

Figure 1
Proposed Gamsberg Smelter Complex

SLR
 SLR Consulting (Africa) (Pty) Ltd
 P O Box 1596, Cramerview, 2060, South Africa
 Tel: +27 (11) 487-0945 Fax: +27 (11) 487-0978



- Legend**
- Towns
 - Roads
 - Rivers
 - Mining Right Area
 - Existing Mine Infrastructure
 - Proposed Bulk Water Pipeline
 - Proposed Smelter Complex Footprint
 - Proposed Secured Landfill Site

0 1 000 2 000 Meters
 Scale: 1:112 000 @ A3
 Projection: Transverse Mercator
 Datum: WGS1984, Lo19

Gamsberg Smelter Project

Figure 2
Proposed Bulk Water Pipeline

SLR
 SLR Consulting (Africa) (Pty) Ltd
 P O Box 1596, Cramerview, 2090, South Africa
 Tel: +27 (11) 467-0945 Fax: +27 (11) 467-0978

710.20008.00069 | 2019/09/02

DOEL VAN HIERDIE DOKUMENT

Hierdie AID is opgestel deur SLR om u toe te lig oor:

- * die beoogde projek;
- * die projekgebied se huidige (grondlyn-) omgewing;
- * die OIE-proses wat gevolg moet word;
- * moontlike omgewings- en maatskaplike kwessies; en
- * hoe u insette in die proses kan lewer.

OORSIG VAN DIE GAMSBERG SMELTERYPROJEK

INLEIDING

Die Gamsberg Sinkmyn is 'n bestaande myn wat tot 4 mtpa erts produseer, met verwante afvalkliphope; 'n mynmasjinerievloot en werkswinkels. Die konsentratoraanleg (Figuur 3) sal tot 300 000 ton sink (metaal in konsentraat) per jaar produseer, met verwante voorraadstapelwerfgebiede, 'n uitskootaanleg en steun-infrastruktuur (d.i. 'n watertoevoerdistribusienetwerk, laboratoriums, rioolwerke en 'n kantoor kompleks). Water word tans uit die Oranjerivier onttrek en na die Gamsberg Sinkmyn via die bestaande boggrondse Sedibeng Waterpyplyn vervoer.



Figuur 3. Gamsberg-myn Bestaande Infrastruktuur

MOTIVERING

Ten einde waarde toe te voeg tot die sinkkonsentraat wat by die Gamsberg Sinkmyn geproduseer word, is Black Mountain Mining (Edms.) Bpk. van voorneme om 'n smeltery te ontwikkel en om hoër waarde sinkgietblokke vir uitvoer te produseer. Dit is in lyn met die Suid-Afrikaanse Regering se Nasionale Nywerheidsbeleidsraamwerk wat poog om Buitelandse Regstreekse Belegging te lok, minerale ten volle te veredel en waardetoegevoegde kommoditeite uit te voer.

GAMSBERG SMELTERYPROJEK

Black Mountain Mining (Edms.) Bpk. beoog die oprigting van 'n elektrolitiese sinksmeltery (die "smeltery") vir die behandeling van konsentrate wat uitsluitlik uit die ertskonsentratoraanleg wat onlangs in bedryf gestel is, geproduseer word. Die beoogde smeltery sal 300 000 ton per jaar (tpa) sinkgietblokke en ander produkte wat dan op die opemark verkoop kan word, produseer.

Die beoogde smeltery sal verskeie produkte genereer deur 'n proses van rooster (suurvormend), uitloging (jarosietvormend), suiwing (verwydering van metaalagtige onsuierhede, asook gips) en elektrowinning, waar sinkafsetting op 'n katode plaasvind. Die afgesette sink word

van die katodes af gestroop en in die smelt- en gietafdeling omgeskakel in sinkgietblokke.

Die sinkgietblokke en swaelsuur sal verkoop word en afvalprodukte sal veilig mee weggedoen moet word. Mineraleafval sal hetsy mee weggedoen word via 'n beveiligde stortingsterrein wes van die smeltery of na die bestaande uitskotbergingsaanleg.

Die primêre steundienste en infrastruktuur wat verband hou met die beoogde smelteryprojek, sluit 'n interne terrein-ingang en toegangsbeheer, weegbrug, skoon en vuil stormwaterbestuur, oorhoofse transmissiekraglyne en 'n beveiligde stortingsterrein in (Figuur 1). Toegang tot die aanleg sal steeds via die N14 wees, soos met huidige bedrywighede. Drinkwater sal by Sedibeng Water bekom word en elektrisiteit by Eskom se Aggeneys Substasie. Die beplanning is om die terrein se vloeibare afloopwater intern deur riool- en afloopwaterbehandelingsaanlegte te behandel.

PELLA GROOTMAATWATERPYPLYN

'n Nuwe 39 km grootmaatwaterpyplyn sal vanaf die bestaande Oranjerivier onttrekkingspunt opgerig word om die ou ondergrondse pyplyn te vervang (Figuur 2). Die bestaande Pella Waterwerke sal ook opgegradeer word. Die nuwe pyplyn sal voorsien in die groter vraag na drinkwater as gevolg van die smelteryontwikkeling. Die nuwe pyplyn sal binne-in die ou ondergrondse pyplynserwituut opgerig word.

Die bestaande Eskom transmissiekraglyn en Eskom substasie wat krag aan die aanjaagpompstasie vir die pyplyn voorsien, sal ook opgegradeer moet word.

PROJEKALTERNATIEWE

Die oorweging van alternatiewe is deurlopend en sal deel vorm van die OIE-proses. Alternatiewe wat vir die beoogde projek oorweeg word, sluit in voetspoor-, liggings- en tegnologie-alternatiewe.

STATUS VAN HUIDIGE OMGEWING

Die Gamsberg eilandberg en omstreke se biodiversiteit word as uiters sensitief geag en die Gamsberg-myn het reeds 'n aantal gebiede 'opsy gesit' en het teenwigooreenkomste in plek, soos vereis word deur die bestaande OM wat uitgereik is deur die Noord-Kaapse Departement van Omgewingsake en Natuurbewaring (NCDENC).

Hoewel grondwaterhulpbronne meer volop as oppervlakwaterkenmerke in die Namakwadistrik is, is dit baie belangrik in 'n waterskaars omgewing, veral vir boere met lewendehawe.

Voorts het die streek ook hoë werkloosheidsyfers op munisipale, distriks- en provinsiale vlak, met mynbou-bedrywighede wat die hoeksteen van die plaaslike ekonomie vorm.

Gevolglig sal die OIE biofisiese en maatskaplike aspekte van die gebied in ag moet neem om 'n beter begrip van die maatskaplike en omgewingsensitiwiteit te kry.

REGULERINGSPROSES WAT GEVOLG MOET WORD

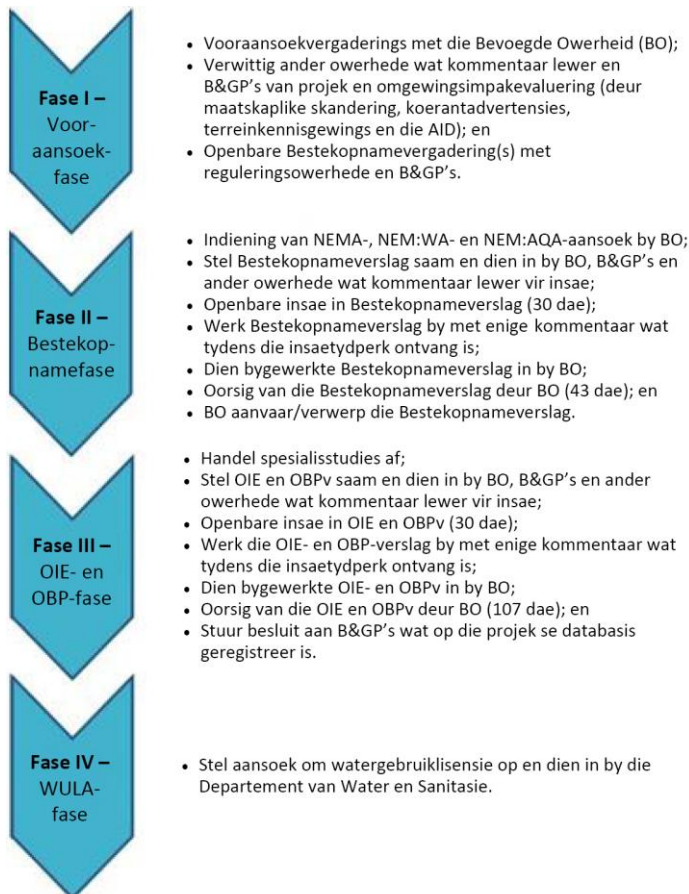
Die OIE-reguleringsproses wat gevolg sal word:

- bied inligting oor die projek;
- boekstaaf die geaffekteerde omgewing waarin dit onderneem word;
- identifiseer die potensiële negatiewe en positiewe impakte van die beoogde projek in oorleg met belangstellende en/of geaffekteerde partye (B&GP's); en
- doen verslag oor bestuursmaatreëls wat benodig word om impakte tot op 'n aanvaarbare vlak te versag.

Die stappe en tydsraamwerke van die proses is ooreenkomstig die OIE-regulasies, 2014 en word hieronder uiteengesit.

STAPPE IN DIE OIE-PROSES

Die proses se waarskynlike stappe en tydsraamwerke word hieronder verskaf. Geregistreeerde B&GP's en ander belanghebbers op die projek se databasis, sal voortydig in kennis gestel word van geleentheid vir openbare deelname.



PARTYE BETROKKE BY DIE OMGEWINGSAANSOEKPROSES

REGULERINGSOWERHEDE

- * Noord-Kaapse Departement van Omgewingsake en Natuurbewaring (NCDENC);
- * Departement van Menslike Nedersettings, Water en Sanitasie (DHSWS);
- * Departement van Minerale Hulpbronne en Energie (DMRE);
- * Suid-Afrikaanse Erfenisulphronagentskap (SAHRA);
- * Departement van Landbou, Bosbou en Visserie (DAFF);
- * Noord-Kaapse Departement van Paaie en Vervoer (NCDRT); en
- * Noord-Kaapse Departement van Landelike Ontwikkeling en Grondhervorming (NCDRDLR); met insluiting van die Kommissaris van Grondeise.

PLAASLIKE OWERHEDE

- * Namakwa Distriksmunisipaliteit;
- * Khai-Ma Plaaslike Munisipaliteit; en
- * Wyksraadslede.

B&GP's

- * Naasliggende grondeienaars en omliggende gemeenskappe, grondgebruikers en -eienaars;
- * Belangstellende partye;
- * Nie-regeringsorganisasies en -verenigings; en
- * Semi-staatsinstansies.

Verwittig ons asseblief van addisionele partye wat betrokke moet wees.

BLACK MOUNTAIN MINING (EDMS.) BEPERK

**AGTERGRONDINLIGTINGSDOKUMENT VIR DIE BEOOGDE GAMSBERG SMELTERY EN GROOTMAATWATERPYPLYNPROJEK.
REGISTRASIE- EN ANTWOORDVORM VIR BELANGSTELLEDE EN GEAFFEKTEERDE PARTYE
OKTOBER 2019**

DATUM		TYD	
BESONDERHEDE VAN DIE BELANGSTELLEDE EN GEAFFEKTEERDE PARTY			
NAAM			
POSADRES			
		POSKODE	
STRAATADRES			
		KODE	
TELEFOONNOMMER BY DIE WERK/BEDAGS		FAKSNOMMER BY DIE WERK/BEDAGS	
SELFOONNOMMER		E-POSADRES	

IDENTIFISEER ASSEBLIEF U BELANG BY DIE BEOOGDE PROJEK

SKRYF U VRAE EN KOMMENTAAR ASSEBLIEF HIER NEER

VERWITTIG SLR ASSEBLIEF VAN ENIGE ANDER BELANGSTELLEDE EN GEAFFEKTEERDE PARTY WAT IN HIERDIE OIE-PROSES INGESLUIT MOET WORD.

Stuur ingevulde vorms asseblief terug aan:
SLR Consulting, vir aandag: Candice Sadan
 Tel: 021 461 1118
 Faks: 011 467 0978
 E-pos: csadan@slrconsulting.com
 Pos: Posbus 1596, Cramerview 2060

Dien voorlopige kommentaar asseblief in by SLR teen 15 November 2019.
 U sal ook 'n geleentheid hê vir kommentaar op die B&OIE.
 Alle geregistreerde B&GP's sal in kennis gestel word wanneer openbare vergaderings plaasvind.

Edwynn Louw

From: Candice Sadan
Sent: Wednesday, 16 October 2019 15:09
To: Candice Sadan
Cc: Kate Hamilton; Edwynn Louw
Subject: Proposed Gamsberg Smelter Project, near Aggeneys, Northern Cape
Attachments: 2019-10-16 Gamsberg smeltery en Grootmaatpyplyn_AID-V0.3.pdf; 2019-10-16 Gamsberg smelter and pipeline_BID-V0.13.pdf

Tracking:	Recipient	Delivery
	Candice Sadan	Delivered: 2019/10/16 15:10
	Kate Hamilton	Delivered: 2019/10/16 15:10
	Edwynn Louw	Delivered: 2019/10/16 15:10

Notice of an initial Public Participation Process

Dear sir / madam

Herewith please find a Background Information Document (BID) regarding the Environmental Impact Assessment (EIA) for the proposed Gamsberg Smelter Project, near Aggeneys, Northern Cape.

This Background Information Document (BID) provides initial information to stakeholders about the EIA process to be undertaken for the proposed project.

You have been sent this communication as you have been identified as a potential Interested and Affected Party (I&AP). Please let SLR know should you no longer wish to receive communications in this regard.

Should you wish to be registered as an I&AP for the Project and have the opportunity to comment on the Scoping and EIA process, please complete and return the attached form.

Kind regards



Candice Sadan
Office Administrator

+27 21 461 1118
csadan@slrconsulting.com

SLR Consulting
SLR Consulting (Cape Town office)
Unit 39, Roeland Square
Cnr Roeland Street and Drury Lane, Cape Town, Western Cape, 8001



This communication and any attachment(s) contain information which is confidential and may also be legally privileged. It is intended for the exclusive use of the recipient(s) to whom it is addressed. If you have received this communication in error, please email us by return mail and then delete the email from your system together with any copies of it. Any views or opinions are solely those of the author and do not represent those of SLR Management Ltd, or any of its subsidiaries, unless specifically stated.

BACKGROUND INFORMATION DOCUMENT

EIA FOR THE PROPOSED GAMSBERG SMELTER PROJECT, NEAR AGGENEYS NORTHERN CAPE

OCTOBER 2019

INTRODUCTION

Black Mountain Mining (Pty) Ltd, part of the Vedanta Zinc International, owns and operates the Gamsberg Zinc Mine in terms of the following licences:

- Environmental Authorisation (Ref: NC/EIA/NAM/KHA/AGG/2012);
- Waste Management Licence (Ref: 12/9/11/L955/8); and
- Water Use Licence for the Gamsberg Mine (Ref:14/D82C/ABCGL/2654).

The Gamsberg Zinc Mine is an up to 10 million ton per annum (mtpa) open pit zinc mine together with a concentrator plant and associated infrastructure. The Gamsberg Zinc Mine is located 14km east of the town of Aggeneys, Northern Cape Province, on the farms Bloemhoek 61 Ptn 1, Gams 60 Ptn 1, and Aroams 57 RE.

Black Mountain Mining (Pty) Ltd is proposing to construct a new zinc smelter (Figure 1) and associated infrastructure (new secured landfill site, transmission line and access roads). The Sedibeng Water underground pipeline from the Orange River (near Pella Town) to the smelter (Figure 2) also requires upgrade to support the smelter project. The upgrade of the old underground pipeline is required to improve the pipeline stability and to cater for additional bulk water supply.

ENVIRONMENTAL AUTHORISATION PROCESS

In order for the proposed project (zinc smelter, associated infrastructure and upgrade of the bulk water pipeline) to proceed an Environmental and Social Impact Assessment (EIA) is required, including an application phase, scoping phase, and an Environmental Impact Assessment (EIA) phase and associated compilation of an Environmental Management Programme (EMP). The assessment is required to be undertaken in terms of the National Environmental Management Act, 107 of 1998 (NEMA) and the associated Regulations (2014). In addition to this, the proposed project will require authorisation in terms of the National Water Act, 36 of 1998, the National Environmental Management: Waste Act 59 of 2008 (NEM:WA) as well as the National Environmental Management: Air Quality Act 39 of 2004 (NEM:AQA).

SLR Consulting (South Africa) (Pty) Ltd (SLR), an independent firm of environmental consultants, has been appointed to manage the environmental regulatory processes and conduct the public participation in support of the applications for the proposed zinc smelter and upgrade of the associated bulk water pipeline.

PURPOSE

This Background Information Document (BID) provides initial information to stakeholders about the EIA process to be undertaken for the proposed project.

YOUR ROLE

You have been identified as an interested and affected party (I&AP) who would like to be informed about the proposed project and have input into the EIA process.

You have an opportunity to review this Background Information Document and to provide your initial comments to SLR for incorporation in the EIA process.

You will also be given the opportunity to register as a stakeholder, provide input at a public meeting, and to review and comment on the Scoping Report and EIA Report.

All comments will be recorded and included in the reports submitted to the Competent Authorities for decision-making.

HOW TO RESPOND

Responses to this document can be submitted by means of the attached comments sheet and/or through communication with the person listed below.

WHO TO CONTACT

SLR Consulting

Candice Sadan

(021) 461 1118 (Tel)

(011) 467 0978 (Fax)

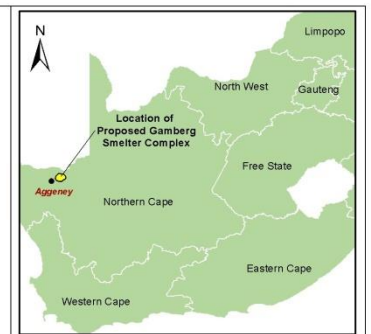
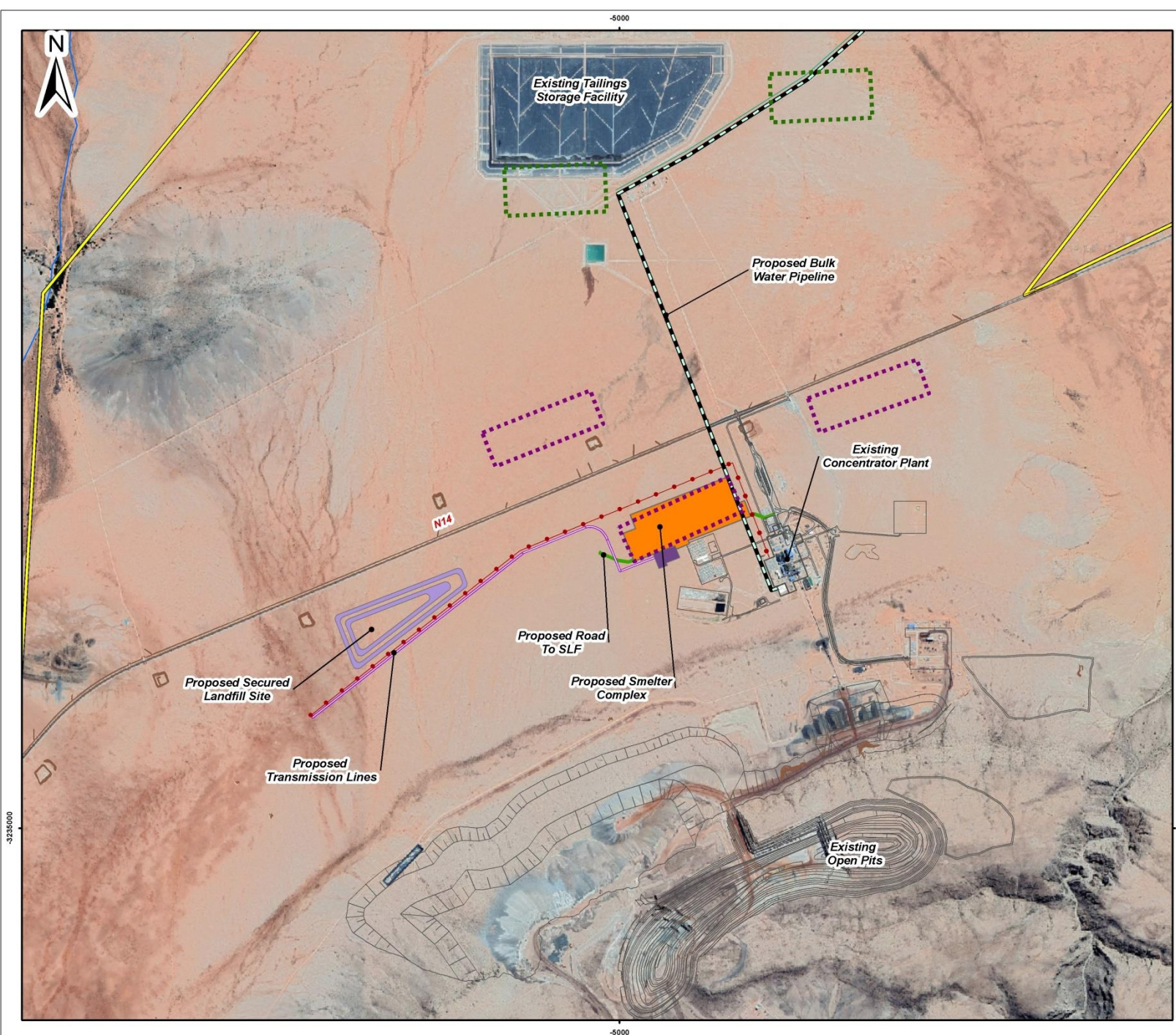
csadan@slrconsulting.com

PO Box 1596, Cramerview 2060

Please submit initial comments to SLR by 15 November 2019. You will also have an opportunity to comment on the Scoping and EIA reports.

All registered I&APs will be notified when public meetings are taking place.





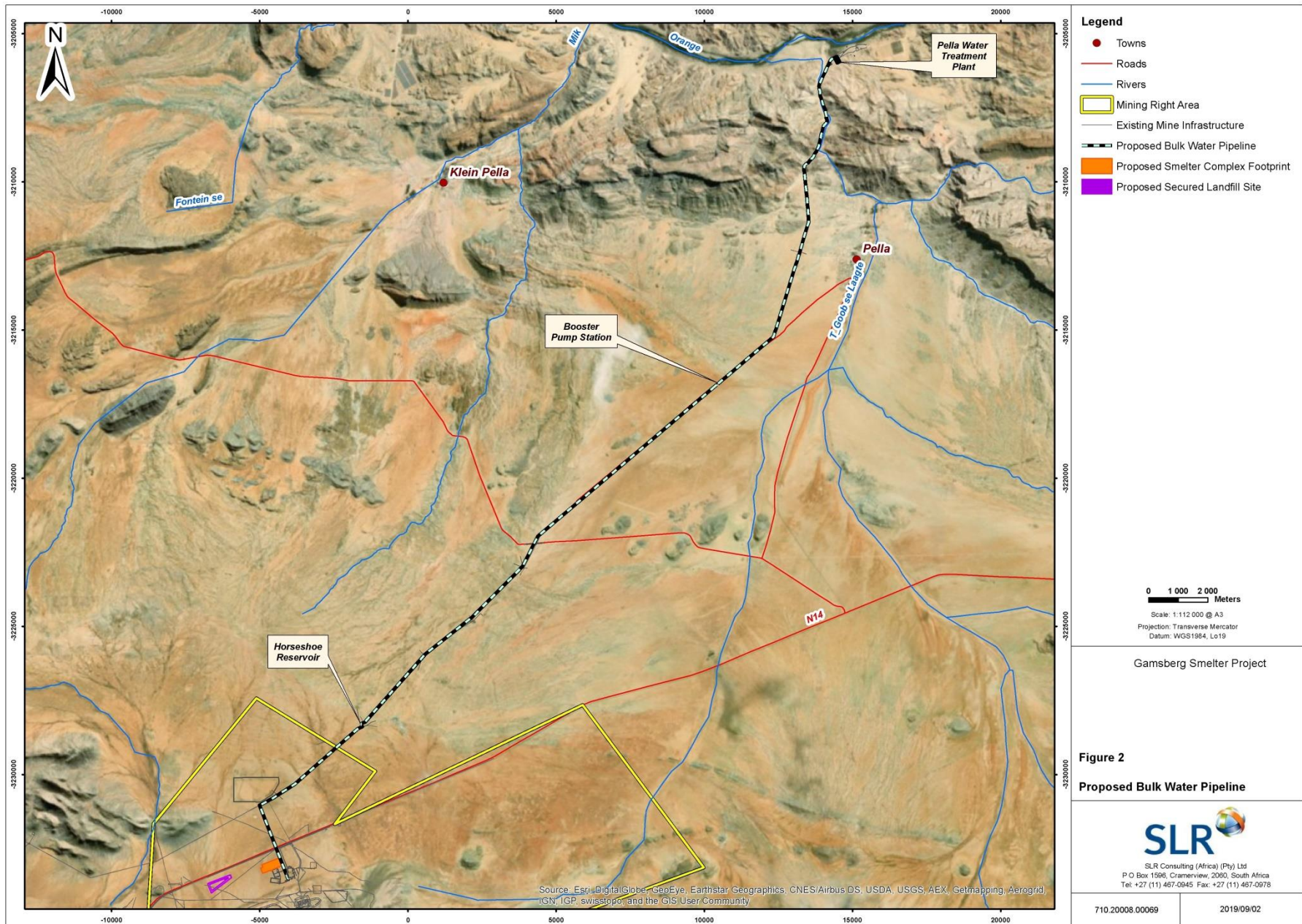
- Legend**
- Mining Right Area
 - Existing Infrastructure
 - Alternative SLF Locations
 - Alternative Smelter Complex Locations
- Proposed Infrastructure**
- Bulk Water Pipeline
 - Secured Landfill Site
 - Switch Yard
 - Smelter Complex Footprint
 - Smelter Roads
 - Transmission Line
 - 66kv Transmission Line

0 200 400 Meters
 Scale: 1:23 000 @ A3
 Projection: Transverse Mercator
 Datum: WGS1984, Lo23

Gamsberg Smelter Project

Figure 1
Proposed Gamsberg Smelter Complex

SLR
 SLR Consulting (Africa) (Pty) Ltd
 P O Box 1596, Cramerview, 2060, South Africa
 Tel: +27 (11) 487-0945 Fax: +27 (11) 487-0978



PURPOSE OF THIS DOCUMENT

This BID has been prepared by SLR to inform you about:

- * The proposed project;
- * The baseline environment of the project area;
- * The EIA process to be followed;
- * Possible environmental and social issues; and
- * How you can have input into the process.

GAMSBERG SMELTER PROJECT OVERVIEW

INTRODUCTION

The Gamsberg Zinc Mine is an existing mine producing up to 4 mtpa of ore with associated waste rock dumps; mine machinery fleet and workshops. The concentrator plant (Figure 3) would produce up to 300 000 tons of zinc (metal in concentrate) per annum with associated stockpile areas, tailings facility and supporting infrastructure (i.e. water supply distribution network, laboratories, sewage works and an office complex). Water is currently extracted from the Orange River and transferred to the Gamsberg Zinc Mine via the existing aboveground Sedibeng Water pipeline.



Figure 3. Gamsberg Mine Existing Infrastructure

MOTIVATION

In order to add value to the zinc concentrate being produced at the Gamsberg Zinc Mine, Black Mountain Mining (Pty) Ltd wishes to develop a smelter and produce higher value zinc ingots for export. This is in line with the Government of South Africa's National Industrial Policy Framework that aims to attract Foreign Direct Investment, fully beneficiate minerals and export of value-added commodities.

GAMSBERG SMELTER PROJECT

Black Mountain Mining (Pty) Ltd is proposing to construct an electrolytic zinc smelter (the "smelter") for treating concentrates produced solely from the recently commissioned ore concentrator plant. The proposed smelter will produce 300 000 tons per annum (tpa) of zinc ingots and other products which can then be sold on the open market.

The proposed smelter will generate numerous products through a process of roasting (acid forming), leaching (jarosite forming) and purification (removal of metallic impurities as well as gypsum) and electrowinning where zinc deposition on a cathode occurs. (. The deposited zinc is

stripped from the cathodes and is converted into zinc ingots in the melting and casting section.

The zinc ingots and sulphuric acid will be sold and waste products will need to be safely disposed. Mineral wastes will either be disposed of via a secured landfill site to the west of the smelter or into the existing tailings storage facility.

The primary support services and infrastructure associated with the proposed smelter project includes an internal site entrance and access controls, weigh bridge, clean and dirty storm water management, overhead transmission lines, and a secure landfill site (Figure 1). Access to the facility would remain via the N14, as per current operations. Potable water would be sourced from Sedibeng Water and electricity from Eskom Aggeneys Substation. Liquid effluent from the site is planned to be treated on-site by sewage and effluent treatment plants.

PELLA BULK WATER PIPELINE

A new 39km bulk water pipeline would be constructed from the existing Orange River abstraction point to replace the old underground pipeline (Figure 2). The existing Pella Water Works would also be upgraded. The existing Pella Water Works would also be upgraded. The new pipeline would supply the increased potable water demands as a result of the smelter development. The new pipeline will be constructed within the old underground pipeline servitude.

The existing Eskom transmission line and Eskom Substation providing power to the booster pump station for the pipeline would also need to be upgraded.

PROJECT ALTERNATIVES

The process of considering alternatives is on-going and will form part of the EIA process. Alternatives considered for the proposed project include footprint, locality and technology alternatives.

STATUS OF EXISTING ENVIRONMENT

The biodiversity of the Gamsberg inselberg and surrounds is considered as extremely sensitive and the Gamsberg Mine already has a number of 'set aside' areas and offset agreements in place as required by the existing EA issued by the Northern Cape Department of Environment and Nature Conservation (NCDENC).

In a water scarce environment groundwater resources in the Namakwa District, although more abundant than surface water features, are very important especially for livestock farmers.

In addition, the region has high unemployment rates at municipal, district and provincial level with mining activities forming the cornerstone of the local economy.

As a result the EIA will need to consider biophysical and social aspects of the area to better understand the social and environmental sensitivities.

REGULATORY PROCESS TO BE FOLLOWED

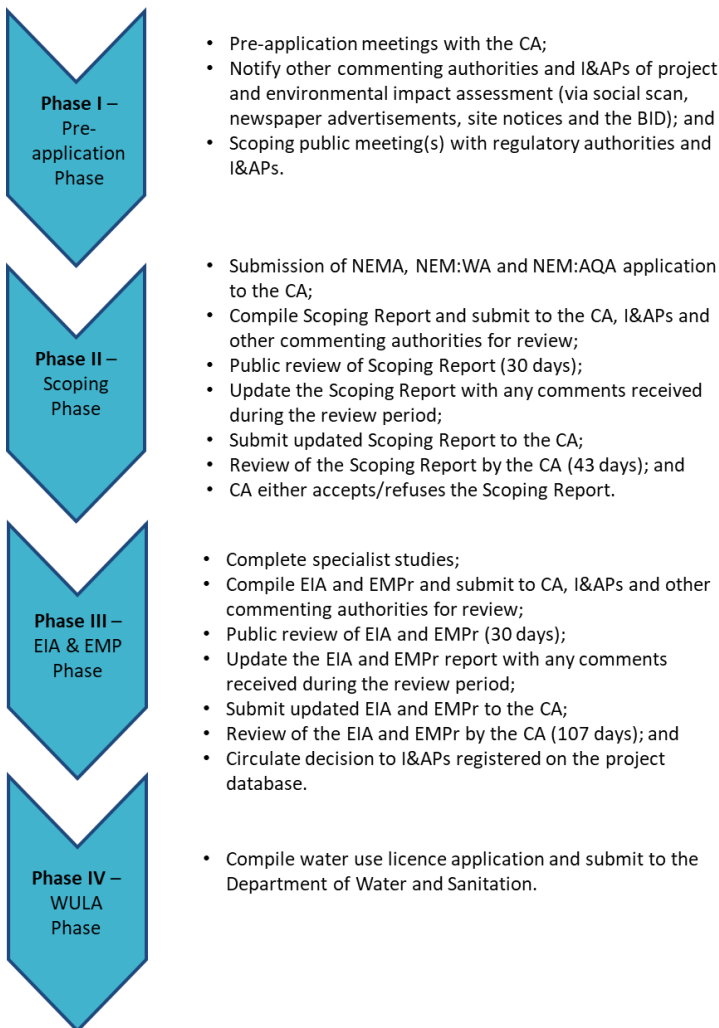
The EIA regulatory process that will be followed:

- provides information on the project;
- documents the affected environment in which it is being undertaken;
- identifies, in consultation with interested and/or affected parties (I&APs), the potential negative as well as positive impacts of the proposed project; and
- reports on management measures required to mitigate impacts to an acceptable level.

The process steps and timeframes are in accordance with the EIA Regulations, 2014 and are outlined below.

STEPS IN THE EIA PROCESS

The likely process steps and timeframes are provided below. Registered I&APs and other stakeholders on the project's database will receive notification of public participation opportunities in advance.



PARTIES INVOLVED IN THE ENVIRONMENTAL APPLICATION PROCESS

REGULATORY AUTHORITIES

- * Northern Cape Department of Environment and Nature Conservation (NCDENC);
- * Department of Human Settlements, Water and Sanitation (DHSWS).
- * Department of Minerals Resources and Energy (DMRE)
- * South Africa Heritage Resource Agency (SAHRA);
- * Department of Agriculture, Forestry and Fisheries (DAFF);
- * Northern Cape Department of Roads and Transport (NCDRT); and
- * Northern Cape Department of Rural Development and Land Reform (NCDRLR), including land claims commissioner.

LOCAL AUTHORITIES

- * Namakwa District Municipality;
- * Khai-Ma Local Municipality; and
- * Ward Councillors.

I&APs

- * Adjacent land owners and surrounding communities, land users and owners;
- * Interested Parties
- * Non-governmental organisations and associations; and
- * Parastatals.

Please let us know of additional parties that should be involved.

BLACK MOUNTAIN MINING (PTY) LIMITED

BACKGROUND INFORMATION DOCUMENT FOR THE PROPOSED GAMSBERG SMELTER AND BULK WATER PIPELINE PROJECT.

REGISTRATION AND RESPONSE FORM FOR INTERESTED AND AFFECTED PARTIES

OCTOBER 2019

DATE		TIME	
PARTICULARS OF THE INTERESTED AND AFFECTED PARTY			
NAME			
POSTAL ADDRESS			
		POSTAL CODE	
STREET ADDRESS			
		CODE	
WORK/ DAY TELEPHONE NUMBER		WORK/ DAY FAX NUMBER	
CELL PHONE NUMBER		E-MAIL ADDRESS	

PLEASE IDENTIFY YOUR INTEREST IN THE PROPOSED PROJECT

--

PLEASE WRITE YOUR COMMENTS AND QUESTIONS HERE

--

PLEASE NOTIFY SLR OF ANY OTHER INTERESTED AND AFFECTED PARTY THAT SHOULD BE INCLUDED IN THIS ESIA PROCESS.

--

Please return completed forms to:

SLR Consulting, attention: Candice Sadan

(Tel) (021) 461 1118

(011) 467 0978 (Fax)

csadan@slrconsulting.com

PO Box 1596, Cramerview 2060

Please submit initial comments to SLR by 15 November 2019. You will also have an opportunity to comment on the S&EIA. All registered I&APs will be notified when public meetings are taking place.

AGTERGRONDINLIGTINGSDOKUMENT

OIE VIR DIE BEOOGDE GAMSBERG SMELTERYPROJEK NABY

AGGENEYS, NOORD-KAAP

OKTOBER 2019

INLEIDING

Black Mountain Mining (Edms.) Bpk., deel van die Vedanta-groep, besit en bedryf die Gamsberg Sinkmyn. Die Gamsberg Sinkmyn Fase 1 word bedryf ingevolge 'n Omgewingsmagtiging (Verw.: NC/EIA/NAM/KHA/AGG/2012) gedateer 12 Augustus 2013. Die Gamsberg Sinkmyn is 'n tot 10 miljoen ton per jaar (mtpa) oopgroefsinkmyn, tesame met 'n konsentratooraanleg en verwante infrastruktuur. Die Gamsberg Sinkmyn is 14 km oos van die dorp Aggeneys, Noord-Kaapprovinsie, op Gedeelte 1 van die plaas Bloemhoek 61, Gedeelte 1 van Gams 60, en die Restant van Aroams 57.

Black Mountain Mining (Edms.) Bpk. beoog om 'n nuwe sinksmeltery (Figuur 1) en verwante infrastruktuur (nuwe beveiligde stortingsterrein, transmissiekraglyn en interne toegangspaaie) op te rig. Sedibeng Water se ondergrondse pyplyn vanaf die Oranjerivier (naby die dorp Pella) tot by die smeltery (Figuur 2) vereis ook opgradering om die smelteryprojek te ondersteun. Die opgradering van die ou ondergrondse pyplyn is nodig om die pyplyn se stabiliteit te verbeter en om voorsiening te maak vir addisionele grootmaatwatertoevoer.

OMGEWINGSMAGTIGINGSPROSES

Vir die beoogde projek (sinksmeltery, verwante infrastruktuur en opgradering van die grootmaatwaterpyplyn) om voort te gaan, word 'n Omgewings- en Maatskaplike Impakevaluering (OIE) vereis, wat 'n aansoek-, bestekopname- en Omgewingsimpakevalueringfase (OIE-fase) insluit, asook die opstel van 'n verwante Omgewingsbestuursprogram (OBP). Die evaluering moet ingevolge die Nasionale Wet op Omgewingsbestuur, 1998 (Wet 107 van 1998) (NEMA) en die verwante Regulasies (2014) onderneem word. Daarbenewens sal die beoogde projek ook 'n magtiging vereis ingevolge die Nasionale Waterwet, Wet 36 van 1998; die Nasionale Wet op Omgewingsbestuur: Afval, Wet 59 van 2008 (NEM:WA), asook die Nasionale Wet op Omgewingsbestuur: Luggehalte, Wet 39 van 2004 (NEM:AQA).

SLR Consulting (South Africa) (Edms.) Bpk. (SLR), 'n onafhanklike firma van omgewingskonsultante, is aangestel om die omgewingsreguleringsprosesse te bestuur en om die openbare deelname ter ondersteuning van die aansoeke vir die beoogde sinksmeltery en opgradering van die verwante grootmaatwaterpyplyn te onderneem.

DOELWIT

Hierdie Agtergrondinligtingsdokument (AID) bied voorlopige inligting aan belanghebbers oor die OIE-proses wat vir die beoogde projek onderneem moet word.

U ROL

U is as 'n belangstellende en geaffekteerde party (B&GP) geïdentifiseer wat ingelig wil word oor die beoogde projek en wat insae in die OIE-proses wil hê.

U het 'n geleentheid om hierdie Agtergrondinligtingsdokument na te gaan en om u voorlopige kommentaar aan SLR te voorsien vir insluiting in die OIE-proses.

U sal ook die geleentheid kry om as 'n belanghebbende te registreer, insette by 'n openbare vergadering te lewer en om die Bestekopname- en OIE-verslag na te gaan en daarop kommentaar te lewer.

Alle kommentaar sal aangeteken en ingesluit word in die verslae wat by die Bevoegde Owerhede ingedien word vir besluitneming.

HOE OM TE REAGEER

Reaksie op hierdie dokument kan ingedien word by wyse van die aangehegte kommentaarvorm en/of deur kommunikasie met die onderstaande persoon.

WIE OM TE KONTAK

SLR Consulting

Candice Sadan

Tel: 021 461 1118

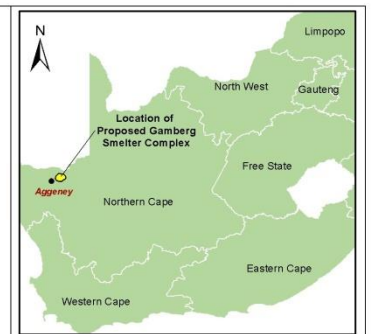
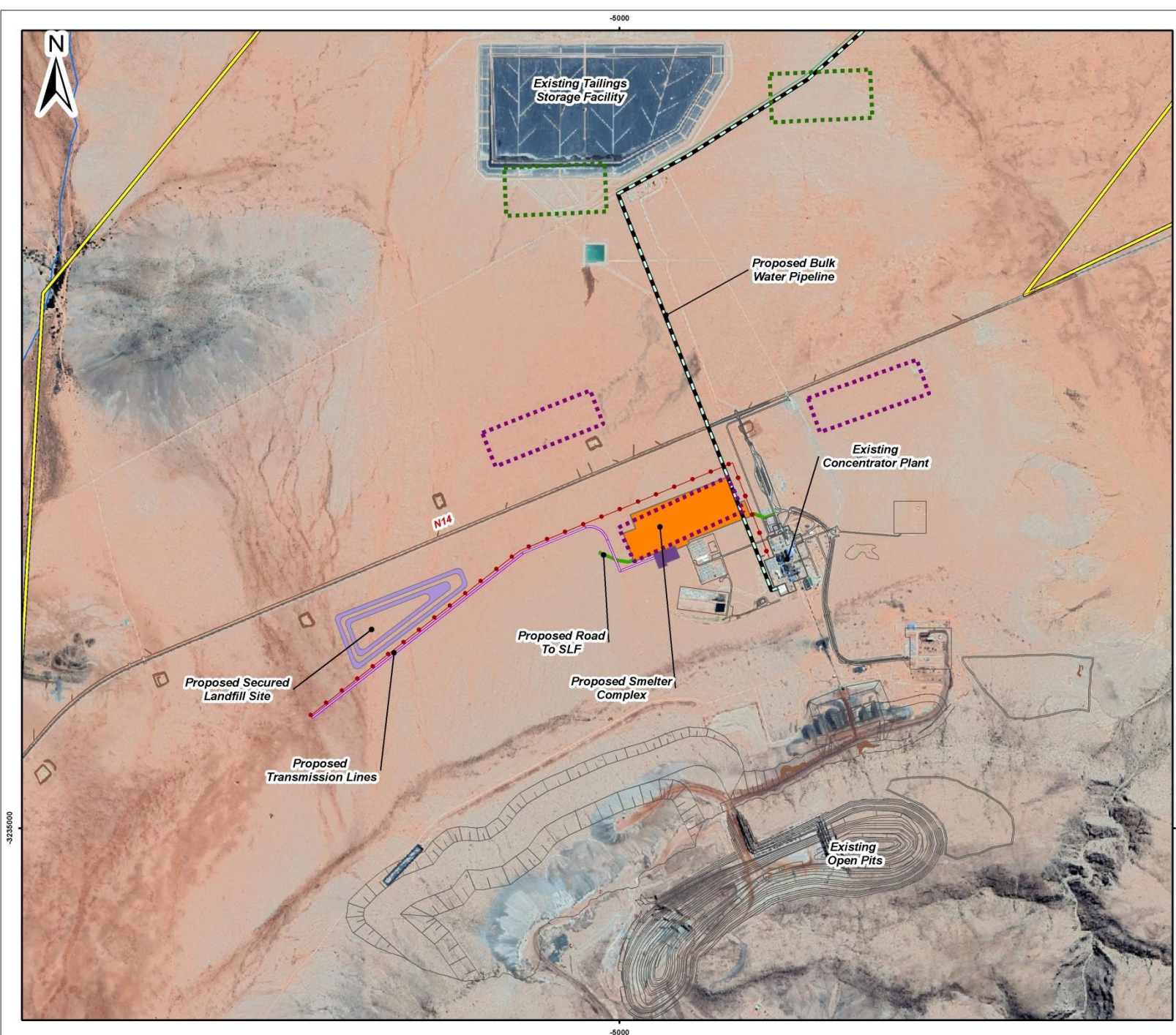
Faks: 011 467 0978

E-pos: csadan@slrconsulting.com

Pos: Posbus 1596, Cramerview 2060

Dien asseblief voorlopige kommentaar in by SLR teen 15 November 2019. U sal ook 'n geleentheid hê om kommentaar te lewer op die Bestekopname- en OIE-verslag.

Alle geregistreeerde B&GP's sal in kennis gestel word wanneer openbare vergaderings plaasvind.



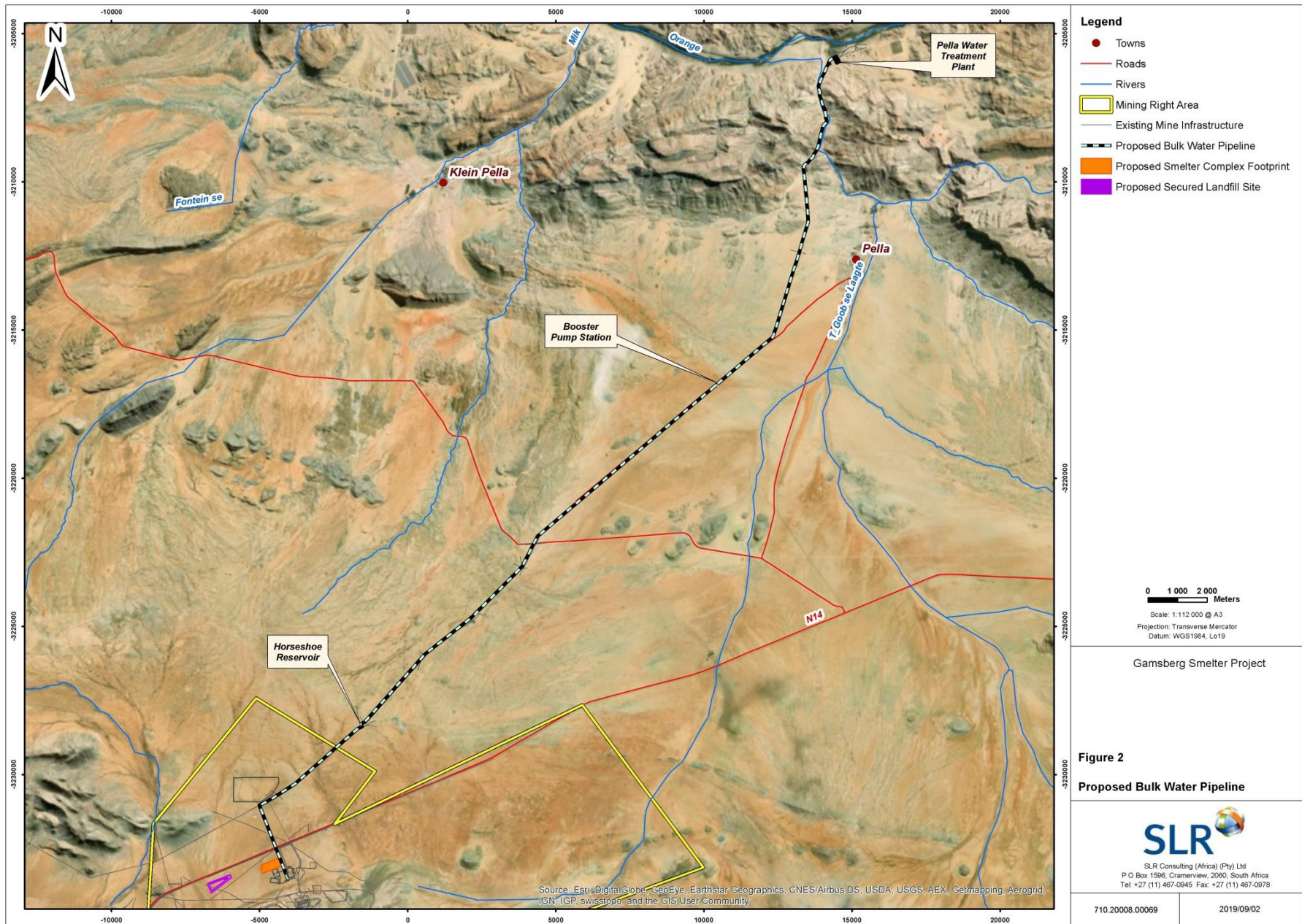
- Legend**
- Mining Right Area
 - Existing Infrastructure
 - Alternative SLF Locations
 - Alternative Smelter Complex Locations
- Proposed Infrastructure**
- Bulk Water Pipeline
 - Secured Landfill Site
 - Switch Yard
 - Smelter Complex Footprint
 - Smelter Roads
 - Transmission Line
 - 66kv Transmission Line

0 200 400 Meters
 Scale: 1:23 000 @ A3
 Projection: Transverse Mercator
 Datum: WGS1984, Lo23

Gamsberg Smelter Project

Figure 1
Proposed Gamsberg Smelter Complex

SLR
 SLR Consulting (Africa) (Pty) Ltd
 P O Box 1596, Cramerview, 2060, South Africa
 Tel: +27 (11) 487-0945 Fax: +27 (11) 487-0978



DOEL VAN HIERDIE DOKUMENT

Hierdie AID is opgestel deur SLR om u toe te lig oor:

- * die beoogde projek;
- * die projekgebied se huidige (grondlyn-) omgewing;
- * die OIE-proses wat gevolg moet word;
- * moontlike omgewings- en maatskaplike kwessies; en
- * hoe u insette in die proses kan lewer.

OORSIG VAN DIE GAMSBERG SMELTERYPROJEK

INLEIDING

Die Gamsberg Sinkmyn is 'n bestaande myn wat tot 4 mtpa erts produseer, met verwante afvalkliphope; 'n mynmasjinerievloot en werkswinkels. Die konsentratoraanleg (Figuur 3) sal tot 300 000 ton sink (metaal in konsentraat) per jaar produseer, met verwante voorraadstapelwerfgebiede, 'n uitskootaanleg en steun-infrastruktuur (d.i. 'n watertoevoerdistribusienetwerk, laboratoriums, rioolwerke en 'n kantoor kompleks). Water word tans uit die Oranjerivier onttrek en na die Gamsberg Sinkmyn via die bestaande boggrondse Sedibeng Waterpyplyn vervoer.



Figuur 3. Gamsberg-myn Bestaande Infrastruktuur

MOTIVERING

Ten einde waarde toe te voeg tot die sinkkonsentraat wat by die Gamsberg Sinkmyn geproduseer word, is Black Mountain Mining (Edms.) Bpk. van voorneme om 'n smeltery te ontwikkel en om hoër waarde sinkgietblokke vir uitvoer te produseer. Dit is in lyn met die Suid-Afrikaanse Regering se Nasionale Nywerheidsbeleidsraamwerk wat poog om Buitelandse Regstreekse Belegging te lok, minerale ten volle te veredel en waardetoegevoegde kommoditeite uit te voer.

GAMSBERG SMELTERYPROJEK

Black Mountain Mining (Edms.) Bpk. beoog die oprigting van 'n elektrolitiese sinksmeltery (die "smeltery") vir die behandeling van konsentrate wat uitsluitlik uit die ertskonsentratoraanleg wat onlangs in bedryf gestel is, geproduseer word. Die beoogde smeltery sal 300 000 ton per jaar (tpa) sinkgietblokke en ander produkte wat dan op die opemark verkoop kan word, produseer.

Die beoogde smeltery sal verskeie produkte genereer deur 'n proses van rooster (suurvormend), uitloging (jarosietvormend), suiwing (verwydering van metaalagtige onsuierhede, asook gips) en elektrowinning, waar sinkafsetting op 'n katode plaasvind. Die afgesette sink word

van die katodes af gestroop en in die smelt- en gietafdeling omgeskakel in sinkgietblokke.

Die sinkgietblokke en swaelsuur sal verkoop word en afvalprodukte sal veilig mee weggedoen moet word. Mineraleafval sal hetsy mee weggedoen word via 'n beveiligde stortingsterrein wes van die smeltery of na die bestaande uitskotbergingsaanleg.

Die primêre steundienste en infrastruktuur wat verband hou met die beoogde smelteryprojek, sluit 'n interne terrein-ingang en toegangsbeheer, weegbrug, skoon en vuil stormwaterbestuur, oorhoofse transmissiekraglyne en 'n beveiligde stortingsterrein in (Figuur 1). Toegang tot die aanleg sal steeds via die N14 wees, soos met huidige bedrywighede. Drinkwater sal by Sedibeng Water bekom word en elektrisiteit by Eskom se Aggeneys Substasie. Die beplanning is om die terrein se vloeibare afloopwater intern deur riool- en afloopwaterbehandelingsaanlegte te behandel.

PELLA GROOTMAATWATERPYPLYN

'n Nuwe 39 km grootmaatwaterpyplyn sal vanaf die bestaande Oranjerivier onttrekkingspunt opgerig word om die ou ondergrondse pyplyn te vervang (Figuur 2). Die bestaande Pella Waterwerke sal ook opgegradeer word. Die nuwe pyplyn sal voorsien in die groter vraag na drinkwater as gevolg van die smelteryontwikkeling. Die nuwe pyplyn sal binne-in die ou ondergrondse pyplynserwituut opgerig word.

Die bestaande Eskom transmissiekraglyn en Eskom substasie wat krag aan die aanjaagpompstasie vir die pyplyn voorsien, sal ook opgegradeer moet word.

PROJEKALTERNATIEWE

Die oorweging van alternatiewe is deurlopend en sal deel vorm van die OIE-proses. Alternatiewe wat vir die beoogde projek oorweeg word, sluit in voetspoor-, liggings- en tegnologie-alternatiewe.

STATUS VAN HUIDIGE OMGEWING

Die Gamsberg eilandberg en omstreke se biodiversiteit word as uiters sensitief geag en die Gamsberg-myn het reeds 'n aantal gebiede 'opsy gesit' en het teenwigooreenkomste in plek, soos vereis word deur die bestaande OM wat uitgereik is deur die Noord-Kaapse Departement van Omgewingsake en Natuurbewaring (NCDENC).

Hoewel grondwaterhulpbronne meer volop as oppervlakwaterkenmerke in die Namakwadistrik is, is dit baie belangrik in 'n waterskaars omgewing, veral vir boere met lewendehawe.

Voorts het die streek ook hoë werkloosheidsyfers op munisipale, distriks- en provinsiale vlak, met mynbou-bedrywighede wat die hoeksteen van die plaaslike ekonomie vorm.

Gevolglig sal die OIE biofisiese en maatskaplike aspekte van die gebied in ag moet neem om 'n beter begrip van die maatskaplike en omgewingsensitiwiteit te kry.

REGULERINGSPROSES WAT GEVOLG MOET WORD

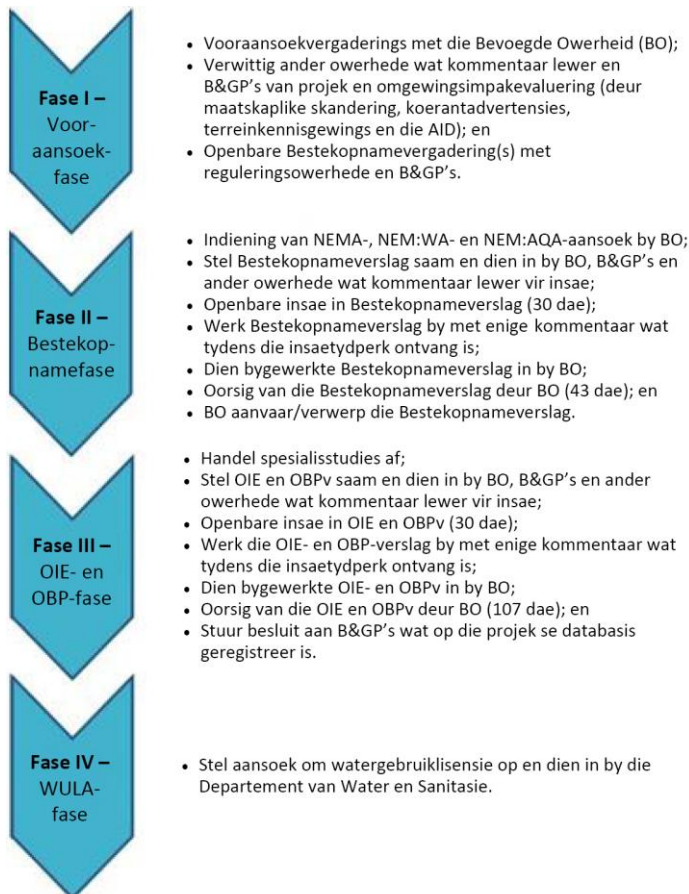
Die OIE-reguleringsproses wat gevolg sal word:

- bied inligting oor die projek;
- boekstaaf die geaffekteerde omgewing waarin dit onderneem word;
- identifiseer die potensiële negatiewe en positiewe impakte van die beoogde projek in oorleg met belangstellende en/of geaffekteerde partye (B&GP's); en
- doen verslag oor bestuursmaatreëls wat benodig word om impakte tot op 'n aanvaarbare vlak te versag.

Die stappe en tydsraamwerke van die proses is ooreenkomstig die OIE-regulasies, 2014 en word hieronder uiteengesit.

STAPPE IN DIE OIE-PROSES

Die proses se waarskynlike stappe en tydsraamwerke word hieronder verskaf. Geregistreeerde B&GP's en ander belanghebbers op die projek se databasis, sal voortydig in kennis gestel word van geleentheid vir openbare deelname.



PARTYE BETROKKE BY DIE OMGEWINGSAANSOEKPROSES

REGULERINGSOWERHEDE

- * Noord-Kaapse Departement van Omgewingsake en Natuurbewaring (NCDENC);
- * Departement van Menslike Nedersettings, Water en Sanitasie (DHSWS);
- * Departement van Minerale Hulpbronne en Energie (DMRE);
- * Suid-Afrikaanse Erfenisulphronagentskap (SAHRA);
- * Departement van Landbou, Bosbou en Visserye (DAFF);
- * Noord-Kaapse Departement van Paaie en Vervoer (NCDRT); en
- * Noord-Kaapse Departement van Landelike Ontwikkeling en Grondhervorming (NCDRDLR); met insluiting van die Kommissaris van Grondeise.

PLAASLIKE OWERHEDE

- * Namakwa Distriksmunisipaliteit;
- * Khai-Ma Plaaslike Munisipaliteit; en
- * Wyksraadslede.

B&GP's

- * Naasliggende grondeienaars en omliggende gemeenskappe, grondgebruikers en -eienaars;
- * Belangstellende partye;
- * Nie-regeringsorganisasies en -verenigings; en
- * Semi-staatsinstansies.

Verwittig ons asseblief van addisionele partye wat betrokke moet wees.

BLACK MOUNTAIN MINING (EDMS.) BEPERK

**AGTERGRONDINLIGTINGSDOKUMENT VIR DIE BEOOGDE GAMSBERG SMELTERY EN GROOTMAATWATERPYPLYNPROJEK.
REGISTRASIE- EN ANTWOORDVORM VIR BELANGSTELLEDE EN GEAFFEKTEERDE PARTYE
OKTOBER 2019**

DATUM		TYD	
BESONDERHEDE VAN DIE BELANGSTELLEDE EN GEAFFEKTEERDE PARTY			
NAAM			
POSADRES			
		POSKODE	
STRAATADRES			
		KODE	
TELEFOONNOMMER BY DIE WERK/BEDAGS		FAKSNOMMER BY DIE WERK/BEDAGS	
SELFOONNOMMER		E-POSADRES	

IDENTIFISEER ASSEBLIEF U BELANG BY DIE BEOOGDE PROJEK

SKRYF U VRAE EN KOMMENTAAR ASSEBLIEF HIER NEER

VERWITTIG SLR ASSEBLIEF VAN ENIGE ANDER BELANGSTELLEDE EN GEAFFEKTEERDE PARTY WAT IN HIERDIE OIE-PROSES INGESLUIT MOET WORD.

Stuur ingevulde vorms asseblief terug aan:
SLR Consulting, vir aandag: Candice Sadan
 Tel: 021 461 1118
 Faks: 011 467 0978
 E-pos: csadan@slrconsulting.com
 Pos: Posbus 1596, Cramerview 2060

Dien voorlopige kommentaar asseblief in by SLR teen 15 November 2019.
 U sal ook 'n geleentheid hê vir kommentaar op die B&OIE.
 Alle geregistreerde B&GP's sal in kennis gestel word wanneer openbare vergaderings plaasvind.

From: Candice Sadan
Sent: Monday, 18 November 2019 11:23
To: Candice Sadan
Cc: Kate Hamilton
Subject: Gamsberg Smelter Project AND Pella Bulk Water Pipeline: Public Meeting Notification
Attachments: 2019-10-16 Gamsberg smelter and pipeline_BID-V0.13.pdf; 2019-10-16 Gamsberg smeltery en Grootmaatpyplyn_AID-V0.3.pdf

**EIA FOR THE PROPOSED GAMSBERG SMELTER PROJECT, NEAR AGGENEYS NORTHERN CAPE AND BASIC
ASSESSMENT PROCESS FOR THE PELLA BULK WATER PIPELINE
PUBLIC PARTICIPATION PROCESS**

Dear Sir/Madam

Black Mountain Mining (Pty) Ltd, part of the Vedanta Zinc International, owns and operates the Gamsberg Zinc Mine. In 2010 Vedanta Resources acquired Black Mountain Mining (Pty) Ltd from Anglo American as part of the acquisition of the Zinc base metal mine take over. Following the acquisition of the Black Mountain Mining properties and rights a feasibility and optimisation of technology for the Gamsberg Zinc Mine was done.

Black Mountain Mining (Pty) Ltd is now proposing to construct a new zinc smelter and associated infrastructure to beneficiate the 250 000 to 300 000 tonnes per annum (tpa) of zinc concentrate produced at the Gamsberg Zinc Mine Phase-1 Concentrator Plant into final metal. The proposed smelter would treat the zinc concentrate from the Gamsberg mine to produce 99% pure special high grade zinc metal for export. As a by-product 99% Sulphuric Acid will also be produced for export and consumption in South Africa.

The relevant legislation and associated activities include but are not limited to the following:

- Environmental Authorisation from the Department of Mineral Resources (DMR) in terms of the National Environmental Management Act (NEMA). The proposed project incorporates several activities listed in the Environmental Impact Assessment Regulations, 2014 (EIA Regulations): Listing Notice's 1, 2 and 3, published in Government Notice (GN) No. 983, 984 and 985 of 4 December 2014 and amended by GN No. 327, 325 and 324 of 7 April 2017. The EIA regulations being followed in this study are the EIA Regulations, 2014 published in GN No. 982 of 4 December 2014 and amended by GN No. 326 of 7 April 2017.
- A Waste Management Licence (WML) from the DMR in terms of the National Environmental Management Waste Act (NEM:WA). The proposed project incorporates waste management activities listed in GNR 921 of 29 November 2013, as amended.
- A Water Use Licence (WUL) from the Department of Water and Sanitation (DWS) in terms of the National Water Act, 1998 (No. 36 of 1998) (NWA). The proposed project incorporates water uses in terms of Section 21 of the NWA.
- An Atmospheric Emissions Licence (AEL) in terms of the National Environmental Management: Air Quality Act, 2004 (Act No. 39 of 2004) (NEM:AQA).

In addition, A new 39km bulk water pipeline is proposed to be constructed from the existing Orange River abstraction point to replace the old underground pipeline. The existing Pella Water Works would also be upgraded. The new pipeline would supply the increased potable water demands as a result of the smelter development and would be constructed within the old underground pipeline servitude. A separate Water Use Licence Application (WULA) and Basic Assessment are being undertaken for the upgraded Pella Bulk Water Pipeline.

SLR Consulting (South Africa) (Pty) Ltd has been appointed as the independent environmental assessment practitioners responsible for undertaking the necessary environmental assessment and public participation process for the project. Given that the project triggers new listed activities, the environmental assessment will include both a Scoping and Environmental Impact Assessment phase in terms of the EIA Regulations (Government Notice 982 to 986, 4 December 2014).

You have been identified as a key stakeholder who may be interested in hearing more about the proposed project and to provide input into the environmental assessment process. This email therefore serves to invite you to a public meeting which has been arranged as part of the public participation process. There are meetings planned in each of the following: Aggeneys, Pella and Pofadder for your convenience. The details of the public meetings are provided below:

Date: 2 December 2019

Venue: Aggeneys North Recreation Club, Aggeneys, 8893

Time: 16:00 to 18:00

Date: 3 December 2019

Venue: Pella Community Hall, 129 Katedraal Str. Pella, 8892

Time: 10:00 to 12:00

Date: 4 December 2019

Venue: Pofadder Community Hall, Corner of Voortrekker and Skool Street, Pofadder, 8890

Time: 14:00 to 16:00

Please again see the attached Background Information Document for your information.

Comments can be submitted at various stages of the project as follows: in writing to the undersigned, at the public meetings and after review of the various reports.

Kind regards

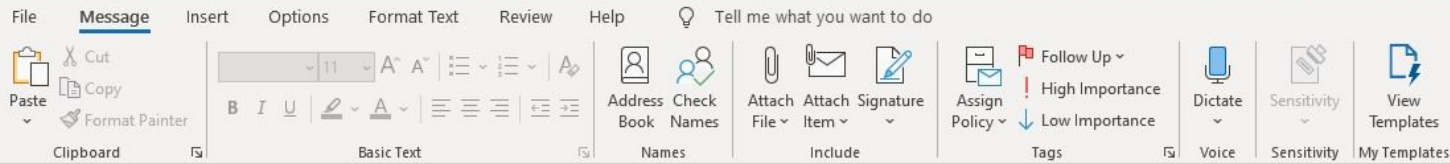
Candice Sadan

Office Administrator

+27 21 461 1118

csadan@slrconsulting.com

SLR Consulting
SLR Consulting (Cape Town office)
5th Floor, Letterstedt House, Newlands on Main
Cnr Main and Campground Roads
Newlands, Cape Town, Western Cape, 7700



This email message will be sent to about 99 recipients.

Send

To

Cc

Bcc

Subject

Gamsberg Smelter Project: EIA & EMPr Report Public Review

Candice Sadan;
 Andrew.m@mdconstruction.co.za; andyp@telkomsa.net; Angel.Diaz@nyrstar.com; Angelo.v@mdconstruction.co.za; anindyas@tce.co.in; anjum.shahzad@bcg.com; anneliseroux2@gmail.com; annelize.vanzyl@eoh.com;
 anthonyG@busbar.co.za; arichardt@golder.co.za; arodgers@ncpg.gov.za; arrurtransport@gmail.com; ashley@cartinvestments.co.za; ashokk@tce.co.in; ashwin@pinkdrive.co.za; askermam@ncpg.gov.za; asmita@sprandco.com;
 astrauss@knightpiesold.com; aviv@orlightsa.com; azwihangwif .Mulaudzi@dmr.gov.za; barbara@significant.za.com; bassonstanley@gmail.com; bbotes@ncpg.gov.za; bclarke@turntown.co.za; bdamon@ncpg.gov.za;
 ben.magara@lonmin.com; Ben@louwill.co.za;
 beukesd@yahoo.com; bezuidenhoutjulian@gmail.com; Bhatia.Abhishek@bcg.com; bill@abglobalmining.co.za; blackmountainelectrical@gmail.com; blenkoe@ncpg.gov.za; blommelandboerdery@gmail.com; bmahumapelo@ncpg.gov.za;
 bonolomakoko@ncpg.gov.za; bphoholo@gmail.com; brian.harvey@smec.com; brian.mokete@absa.co.za; brian@tfmsa.co.za; brianh@bwie.co.za; Brians@thedti.gov.za; brl.scrapmetals@gmail.com; brunhild.strauss@gmail.com;
 BThomas-Abrahams@ncpg.gov.za; bthomas-abrahams@ncpg.gov.za; buang.mokate@dmr.gov.za; buildit@nashuasp.co.za; Bulelwa.Peppeta@contitech.co.za; busi.sokhulu@dpe.gov.za



Dear Sir/ Madam

Black Mountain Mining (Pty) Ltd, a subsidiary of Vedanta Zinc International (VZI), owns and operates the Gamsberg Zinc Mine. The Gamsberg Zinc Mine has been in operation since June 2016 and is currently mining up to 4 million tonnes per annum (mtpa) and producing up to 250 000 tonnes per annum (tpa) of zinc concentrate for export. Phase 2 will expand the mining capacity to 10 mtpa. The Gamsberg Zinc Mine is located in the Northern Cape Province of South Africa, approximately 14 km east of the town of Aggeneys and 120 km east of Springbok along the N14. Figure 1 and Figure 2 show the current approved Gamsberg Zinc Mine operations.

Black Mountain Mining (Pty) Ltd is now proposing to construct a new zinc smelter and associated infrastructure to produce 300 000 tpa special high grade zinc metal by processing 680 000 tpa of zinc concentrate (Gamsberg Smelter Project). As a by-product 450 000 tpa of pure sulphuric acid will be produced for both export and consumption within South Africa.

SLR Consulting South Africa (Pty) Ltd has been appointed by Black Mountain Mining (Pty) Ltd as the Environmental Assessment Practitioner for the EIA process.

The Draft Environmental Impact Assessment (EIA) and Environmental Management Programme (EMPr) Reports for the proposed Gamsberg Smelter Project have been made available for a public review period of 30 days, from 2 October 2020 to 1 November 2020. The Non-Technical Summary attached contains a brief synopsis of the EIA and EMPr in both English and Afrikaans. Due to the Covid-19 pandemic, and according to the Department of Environment, Forestry and Fisheries (DEFF) Guidelines issued on 5 June 2020 restricting the issuing of hard copies into the public domain, the full BAR can be found in the following places for review:

- Project website - <https://slrpublicdocs.datafree.co/public-documents/gamsberg> (which is accessible from internet-capable mobile phones without data charges);
- SLR website - <https://slrconsulting.com/public-documents/gamsberg>; and
- Black Mountain Mining (Pty) Ltd website - <https://www.vedanta-zincinternational.com/sustainability/emprs>.

Please send all comments to SLR (csadan@slrconsulting.com) using the SLR project reference: 720.22013.00002 Gamsberg Smelter Project

Yours faithfully,



File Message Insert Options Format Text Review Help Tell me what you want to do

Clipboard Basic Text Names Include Tags Voice Sensitivity My Templates

You are not responding to the latest message in this conversation. Click here to open it.

To: Candice Sadan

Cc: BusiM@idc.co.za; nhiggitt@sahra.org.za; cabler@nra.co.za; careforlife321@gmail.com; carel@cdvl.co.za; caroline@plantman.co.za; cdn@endemicvision.co.za; celiwe.mkhwanazi@lafargeholcim.com; ceosec@sedibengwater.co.za; Cfarmer@ncpg.gov.za; cg.capetown@mea.gov.in; cg@indconjoburg.co.za; charles.glossop@petrichorgroup.co.za; charles.harman@jpmorgan.com; charles.jacobs@linklaters.com; charles.march@atlanticayield.com; charles.ntsele@metso.com; charlie@tricomafrika.co.za; +79 others

Bcc:

Subject: Gamsberg Smelter Project: EIA & EMPr Report Public Review

Gamsberg Smelter_EIA_NTS_v1.1.pdf 2 MB

Gamsberg Smelter_EIA_NTS_v1.1 Afrikaans.pdf 5 MB

Dear Sir/ Madam

Black Mountain Mining (Pty) Ltd, a subsidiary of Vedanta Zinc International (VZI), owns and operates the Gamsberg Zinc Mine. The Gamsberg Zinc Mine has been in operation since June 2016 and is currently mining up to 4 million tonnes per annum (mtpa) and producing up to 250 000 tonnes per annum (tpa) of zinc concentrate for export. Phase 2 will expand the mining capacity to 10 mtpa. The Gamsberg Zinc Mine is located in the Northern Cape Province of South Africa, approximately 14 km east of the town of Aggeneys and 120 km east of Springbok along the N14. Figure 1 and Figure 2 show the current approved Gamsberg Zinc Mine operations.

Black Mountain Mining (Pty) Ltd is now proposing to construct a new zinc smelter and associated infrastructure to produce 300 000 tpa special high grade zinc metal by processing 680 000 tpa of zinc concentrate (Gamsberg Smelter Project). As a by-product 450 000 tpa of pure sulphuric acid will be produced for both export and consumption within South Africa.

SLR Consulting South Africa (Pty) Ltd has been appointed by Black Mountain Mining (Pty) Ltd as the Environmental Assessment Practitioner for the EIA process.

The Draft Environmental Impact Assessment (EIA) and Environmental Management Programme (EMPr) Reports for the proposed Gamsberg Smelter Project have been made available for a public review period of 30 days, from 2 October 2020 to 1 November 2020. The Non-Technical Summary attached contains a brief synopsis of the EIA and EMPr in both English and Afrikaans. Due to the Covid-19 pandemic, and according to the Department of Environment, Forestry and Fisheries (DEFF) Guidelines issued on 5 June 2020 restricting the issuing of hard copies into the public domain, the full BAR can be found in the following places for review:

- Project website - <https://slrpublicdocs.datafree.co/public-documents/gamsberg> (which is accessible from internet-capable mobile phones without data charges);
- SLR website - <https://slrconsulting.com/public-documents/gamsberg>; and
- Black Mountain Mining (Pty) Ltd website - <https://www.vedanta-zincinternational.com/sustainability/emprs>.

Please send all comments to SLR (csadan@slrconsulting.com) using the SLR project reference: 720.22013.00002 Gamsberg Smelter Project

Yours faithfully,
Kate Hamilton

Candice Sadan
Office Administrator

File Message Insert Options Format Text Review Help Tell me what you want to do

Cut Copy Paste Format Painter Clipboard Basic Text Names Include Tags Voice Sensitivity My Templates

You are not responding to the latest message in this conversation. Click here to open it.

To: Candice Sadan

Cc: egaborone@ncpg.gov.za; ehshube@gmail.com; ejulius4@gmail.com; eleeka@barloworld-equipment.com; elmar.strauss@gmail.com; elsabe.dtec@gmail.com; elsaj@gemsbok.co.za; ematolweni@ncpg.gov.za; ememps1@telkomsa.net; englou@telkomsa.net; Enockr@fraseralexander.co.za; enricoc@liviero.com; eoosthuysen@isat.co.za; erasmusd@nra.co.za; eugene@barit.co.za; eugene@npa.co.za; eugenia.legheku@dmr.gov.za; eurekaboikanyo@ncdoe.gov.za; Eurika.sekhu@dpw.gov.za; Fanie.Loubser@dustaside.com; FisaSN@eskom.co.za; fnjini@bloomberg.net; Fortune.segoje@dustaside.com; fortunec@ncpg.gov.za; francois.beukes@lgcgroup.com; cris.vele@lgcgroup.com; Frankb@elb.co.za; frankweldon@mweb.co.za; franmilms@telkomsa.net; frans.meintjes@ssgconsulting.co.za; FRANZE@pepkor-properties.com; fraser.jamieson@jpmorgan.com; fsamodien@bhubesi.co.za; FScott@osborn.co.za; Gavin.m@mdconstruction.co.za; gavinp@bmgworld.co.za

Subject: Gamsberg Smelter Project: EIA & EMPr Report Public Review

Gamsberg Smelter_EIA_NTS_v1.1.pdf 2 MB

Gamsberg Smelter_EIA_NTS_v1.1 Afrikaans.pdf 5 MB

Dear Sir/ Madam

Black Mountain Mining (Pty) Ltd, a subsidiary of Vedanta Zinc International (VZI), owns and operates the Gamsberg Zinc Mine. The Gamsberg Zinc Mine has been in operation since June 2016 and is currently mining up to 4 million tonnes per annum (mtpa) and producing up to 250 000 tonnes per annum (tpa) of zinc concentrate for export. Phase 2 will expand the mining capacity to 10 mtpa. The Gamsberg Zinc Mine is located in the Northern Cape Province of South Africa, approximately 14 km east of the town of Aggeneys and 120 km east of Springbok along the N14. Figure 1 and Figure 2 show the current approved Gamsberg Zinc Mine operations.

Black Mountain Mining (Pty) Ltd is now proposing to construct a new zinc smelter and associated infrastructure to produce 300 000 tpa special high grade zinc metal by processing 680 000 tpa of zinc concentrate (Gamsberg Smelter Project). As a by-product 450 000 tpa of pure sulphuric acid will be produced for both export and consumption within South Africa.

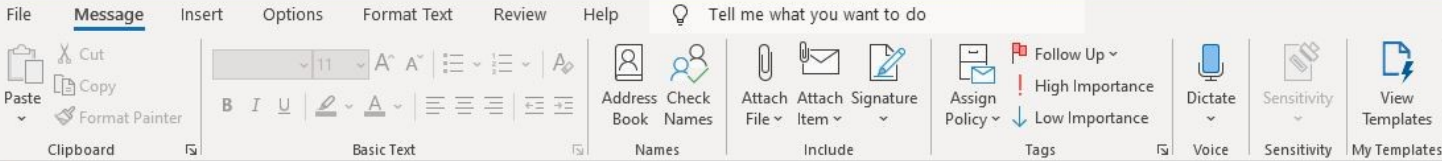
SLR Consulting South Africa (Pty) Ltd has been appointed by Black Mountain Mining (Pty) Ltd as the Environmental Assessment Practitioner for the EIA process.

The Draft Environmental Impact Assessment (EIA) and Environmental Management Programme (EMPr) Reports for the proposed Gamsberg Smelter Project have been made available for a public review period of 30 days, from 2 October 2020 to 1 November 2020. The Non-Technical Summary attached contains a brief synopsis of the EIA and EMPr in both English and Afrikaans. Due to the Covid-19 pandemic, and according to the Department of Environment, Forestry and Fisheries (DEFF) Guidelines issued on 5 June 2020 restricting the issuing of hard copies into the public domain, the full BAR can be found in the following places for review:

- Project website - <https://slrpublicdocs.datafree.co/public-documents/gamsberg> (which is accessible from internet-capable mobile phones without data charges);
- SLR website - <https://slrconsulting.com/public-documents/gamsberg>; and
- Black Mountain Mining (Pty) Ltd website - <https://www.vedanta-zincinternational.com/sustainability/emprs>.

Please send all comments to SLR (csadan@slrconsulting.com) using the SLR project reference: 720.22013.00002 Gamsberg Smelter Project

Yours faithfully,



You are not responding to the latest message in this conversation. Click here to open it.

To

Cc Candice Sadan

Bcc

Johan.Rademan@ge.com; johan.roux@rouxminingandcivils.co.za; Johan.Steyn@irco.com; johan@aciell-geomatics.com; johan@afripline.co.za; johan@chemquest.co.za; johan@sphgroup.co.za; johannes.nematatani@dmr.gov.za; johannita@enviroserv.co.za; johanvandyk68@gmail.com; Johanvdh@elb.co.za; john@52eng.co.za; johnlee@koreazinc.co.kr; johnmark@umsizi.co.za; jolyn@gulfstreamenergy.co.za; jonas.leonard@gmail.com; jonathan@emscor.com; jono@fcircle.co.za; Joseph.Keenan@bme.co.za; jroux@minerp.com; JRyall@southey.co.za; july.ndlovu@angloamerican.com; june4grey@gmail.com; Justice.Kgopodithata@dustaside.com; jwatt@lantic.net; kambroo@mweb.co.za; kammasoas@vodamail.co.za; kammasoas@vodamail.co.za; Kay.fortuin@imp.co.za; kefilwe.chibogo@dmr.gov.za; kefilwe.chibogo@dmr.gov.za; ken.gibbs@teichmanngrp.com; Kennedy.Sithole@saint-gobain.com; kenny@landile.co.za; kevanderson@me.com; Kgomotso.Maditla@energy.gov.za; khainamengineering@gmail.com; khakhane@gmail.com; Khangwelo.maphaha@dmr.gov.za; khayalethu.matrose@dmr.gov.za; kiangi.kiangi@metso.com; KiewitA@eskom.co.za; kim.hodieme@kingsbeads.com; kim.schoepflin@kwatani.co.za; Klari.Veress@mb.co.za; kmohibidu@ncpg.gov.za; kobus@sinvac.co.za; krameetse@biothermenergy.com; kramesh@tce.co.in; Kurt.belm@teichmanngrp.com; kurt@chadcon.co.za; kykgate@gmail.com; L.Ntsholo@sanbi.org.za; lance.steel@maptek.co.za; Laurie.Tolson@ge.com; lauryn@ignitionmarketing.co.za; lebo.manhe@v3consulting.co.za; lennard@ldelec.co.za; Lenzlizzards2@gmail.com; lerato@umsizi.co.za; LeratoM@thedti.gov.za; lesley@gaheritage.co.za; lesley@khaima.gov.za; boet@khaima.gov.za;

Subject Gamsberg Smelter Project: EIA & EMPr Report Public Review



Dear Sir/ Madam

Black Mountain Mining (Pty) Ltd, a subsidiary of Vedanta Zinc International (VZI), owns and operates the Gamsberg Zinc Mine. The Gamsberg Zinc Mine has been in operation since June 2016 and is currently mining up to 4 million tonnes per annum (mtpa) and producing up to 250 000 tonnes per annum (tpa) of zinc concentrate for export. Phase 2 will expand the mining capacity to 10 mtpa. The Gamsberg Zinc Mine is located in the Northern Cape Province of South Africa, approximately 14 km east of the town of Aggeneys and 120 km east of Springbok along the N14. Figure 1 and Figure 2 show the current approved Gamsberg Zinc Mine operations.

Black Mountain Mining (Pty) Ltd is now proposing to construct a new zinc smelter and associated infrastructure to produce 300 000 tpa special high grade zinc metal by processing 680 000 tpa of zinc concentrate (Gamsberg Smelter Project). As a by-product 450 000 tpa of pure sulphuric acid will be produced for both export and consumption within South Africa.

SLR Consulting South Africa (Pty) Ltd has been appointed by Black Mountain Mining (Pty) Ltd as the Environmental Assessment Practitioner for the EIA process.

The Draft Environmental Impact Assessment (EIA) and Environmental Management Programme (EMPr) Reports for the proposed Gamsberg Smelter Project have been made available for a public review period of 30 days, from 2 October 2020 to 1 November 2020. The Non-Technical Summary attached contains a brief synopsis of the EIA and EMPr in both English and Afrikaans. Due to the Covid-19 pandemic, and according to the Department of Environment, Forestry and Fisheries (DEFF) Guidelines issued on 5 June 2020 restricting the issuing of hard copies into the public domain, the full BAR can be found in the following places for review:

- Project website - <https://slrpublicdocs.datafree.co/public-documents/gamsberg> (which is accessible from internet-capable mobile phones without data charges);
- SLR website - <https://slrconsulting.com/public-documents/gamsberg>; and
- Black Mountain Mining (Pty) Ltd website - <https://www.vedanta-zincinternational.com/sustainability/emprs>.

Please send all comments to SLR (csadan@slrconsulting.com) using the SLR project reference: 720.22013.00002 Gamsberg Smelter Project

Yours faithfully,



File Message Insert Options Format Text Review Help Tell me what you want to do

Cut Copy Paste Format Painter Clipboard Basic Text Address Book Names Attach File Attach Item Signature Assign Policy Follow Up High Importance Low Importance Dictate Sensitivity View Templates

You are not responding to the latest message in this conversation. Click here to open it.

Send To Cc Bcc

Candice Sadan

marisa@platteland.co.za; maritzm@bvinam.co.za; marius.botes@ge.com; marius.vanniker@dataminesoftware.com; marius@namkon.co.za; mark@ctauri.com; mark@ecological.co.za; mark@globalafrica.co.za; mark@modelart.co.za; marna@global.co.za; martijng@liviero.com; Martin.durand@teichmanngrp.com; martin.matthysen@imp.co.za; Martinp@firsttechfs.co.za; matthew.bester@geoslam.com; mayor@khaima.gov.za; mazwit@idc.co.za; mbabuseng@ncpg.gov.za; Megan.Becker@uct.ac.za; Jochen.Petersen@uct.ac.za; UYSNIC002@myuct.ac.za; melm@dws.gov.za; mfourie@cer.org.za; MGreeff@zestweg.com; Michael.fraser@south32.net; michael.maasdorp@abengoa.com; michael@gulfstreamenergy.co.za; michael@unionsteel.co.za; michaelschaffer@woodgrovetech.com; Michal.kotze@pwc.com; mikael.staffas@boliden.com; mike.teke@masimongrs.com; mike@dumpsolver.com.au; Mikem@elb.co.za; ministry@economic.gov.za; minnel@vodamail.co.za; minnet@vodamail.co.za; Mittapalli.Preetham@bcg.com; mkatz@ENSafrica.com; mlebakeng@ncpg.gov.za; mm@richtersveld.gov.za; mmadyo@ncpg.gov.za; mmaye@ncpg.gov.za; MMolefane@thedti.gov.za; mmpa@karoohoogland.gov.za; mmsecretary@khaima.gov.za; mmsecretary@khaima.gov.za; mmsecretary@khaima.gov.za; MNdzilili@ncpg.gov.za; mnkasana@barloworld-equipment.com; mnkompela@ncpg.gov.za; mochotlid@dwa.gov.za; mohammad.rahiman@kwatani.co.za; mokhoantle@dws.gov.za; Molefe.Morokane@dmr.gov.za; monde.mema@andritz.com; morne@afriline.co.za; morneb@afriline.co.za; mpmaniza@manzhholdings.co.za

Subject: Gamsberg Smelter Project: EIA & EMPr Report Public Review

Gamsberg Smelter_EIA_NTS_v1.1.pdf 2 MB

Gamsberg Smelter_EIA_NTS_v1.1 Afrikaans.pdf 5 MB

Dear Sir/ Madam

Black Mountain Mining (Pty) Ltd, a subsidiary of Vedanta Zinc International (VZI), owns and operates the Gamsberg Zinc Mine. The Gamsberg Zinc Mine has been in operation since June 2016 and is currently mining up to 4 million tonnes per annum (mtpa) and producing up to 250 000 tonnes per annum (tpa) of zinc concentrate for export. Phase 2 will expand the mining capacity to 10 mtpa. The Gamsberg Zinc Mine is located in the Northern Cape Province of South Africa, approximately 14 km east of the town of Aggeneys and 120 km east of Springbok along the N14. Figure 1 and Figure 2 show the current approved Gamsberg Zinc Mine operations.

Black Mountain Mining (Pty) Ltd is now proposing to construct a new zinc smelter and associated infrastructure to produce 300 000 tpa special high grade zinc metal by processing 680 000 tpa of zinc concentrate (Gamsberg Smelter Project). As a by-product 450 000 tpa of pure sulphuric acid will be produced for both export and consumption within South Africa.

SLR Consulting South Africa (Pty) Ltd has been appointed by Black Mountain Mining (Pty) Ltd as the Environmental Assessment Practitioner for the EIA process.

The Draft Environmental Impact Assessment (EIA) and Environmental Management Programme (EMPr) Reports for the proposed Gamsberg Smelter Project have been made available for a public review period of 30 days, from 2 October 2020 to 1 November 2020. The Non-Technical Summary attached contains a brief synopsis of the EIA and EMPr in both English and Afrikaans. Due to the Covid-19 pandemic, and according to the Department of Environment, Forestry and Fisheries (DEFF) Guidelines issued on 5 June 2020 restricting the issuing of hard copies into the public domain, the full BAR can be found in the following places for review:

- Project website - <https://slrpublicdocs.datafree.co/public-documents/gamsberg> (which is accessible from internet-capable mobile phones without data charges);
- SLR website - <https://slrconsulting.com/public-documents/gamsberg>; and
- Black Mountain Mining (Pty) Ltd website - <https://www.vedanta-zincinternational.com/sustainability/emprs>.

Please send all comments to SLR (csadan@slrconsulting.com) using the SLR project reference: 720.22013.00002 Gamsberg Smelter Project

Yours faithfully,

File Message Insert Options Format Text Review Help Tell me what you want to do

Cut Copy Paste Format Painter Clipboard Basic Text Names Include Tags Voice Sensitivity My Templates

You are not responding to the latest message in this conversation. Click here to open it.

Send To Cc Bcc

smachado@unionprojects.co.za; lnstones@webmail.co.za; mferreira@qualitytube.co.za; reneewilliams@ncpg.gov.za; lucretiavanderwesthuizen@ncpg.gov.za; bvass@num.org.za; mariusv@bwie.co.za; admin@uptcontainerpark.co.za; rent.sales@uptcontainerpark.co.za; karen.low@juwi.co.za; c.geldenhuis@hotmail.com; peter.denc87@gmail.com; bkoegelenberg@csgfoods.co.za; maritzm@bvinam.co.za; preterk@crossroads.co.za; juandre.whon@aveng-acs.com; lambert.myburgh@aveng-acs.com; ralph@pmctraining.co.za; abotes@sedibengwater.co.za; carlosolivier@gmail.com; ckoegelenberg@csgfoods.co.za; cloetecaitlin@gmail.com; hvdheever2@gmail.com; jduplesist@barloworldequipment.com; pboucher@tsebo.com; ghamsD@gmail.com; tammylvisagie@gmail.com; tgnvisser@telkomsa.net; pofaddersaverite@gmail.com; pjwitsand@gmail.com; poortjieboerdery@gmail.com; youthpowerkhaima@gmail.com; alexandravanwyk47@gmail.com; boet@khaima.gov.za; hr@khaima.gov.za; vries@khaima.gov.za; lakusvanrooi@gmail.com; ishmaelkolberg@gmail.com; shalekfredericks406@gmail.com; jasonsecond4@gmail.com; riaangalant9@gmail.com; janrooi661@gmail.com; youthpowerkhaima@gmail.com; stefanusapril@yahoo.com; shaunvanderbyl@gmail.com; bkortum@gmail.com; erenaannelise@gmail.com; acvvsophiaouetehuis@acvv.org.za; tennabrandtaz@gmail.com; lizamuller1969@gmail.com; silonsons@mweb.co.za; tedbezuidenhout3@gmail.com; mitchley.cloete@gmail.com; johannessilver11@gmail.com; gailshaun3@gmail.com; estellaclloet@gmail.com; blaize.magee@woodbeam.co.za; veronique@g7energies.com; pradeep.shetty@amsl-zm.com; imr.bas653@gmail.com;

Subject: Gamsberg Smelter Project: EIA & EMPr Report Public Review

Gamsberg Smelter_EIA_NTS_v1.1.pdf 2 MB

Gamsberg Smelter_EIA_NTS_v1.1 Afrikaans.pdf 5 MB

Dear Sir/ Madam

Black Mountain Mining (Pty) Ltd, a subsidiary of Vedanta Zinc International (VZI), owns and operates the Gamsberg Zinc Mine. The Gamsberg Zinc Mine has been in operation since June 2016 and is currently mining up to 4 million tonnes per annum (mtpa) and producing up to 250 000 tonnes per annum (tpa) of zinc concentrate for export. Phase 2 will expand the mining capacity to 10 mtpa. The Gamsberg Zinc Mine is located in the Northern Cape Province of South Africa, approximately 14 km east of the town of Aggeneys and 120 km east of Springbok along the N14. Figure 1 and Figure 2 show the current approved Gamsberg Zinc Mine operations.

Black Mountain Mining (Pty) Ltd is now proposing to construct a new zinc smelter and associated infrastructure to produce 300 000 tpa special high grade zinc metal by processing 680 000 tpa of zinc concentrate (Gamsberg Smelter Project). As a by-product 450 000 tpa of pure sulphuric acid will be produced for both export and consumption within South Africa.

SLR Consulting South Africa (Pty) Ltd has been appointed by Black Mountain Mining (Pty) Ltd as the Environmental Assessment Practitioner for the EIA process.

The Draft Environmental Impact Assessment (EIA) and Environmental Management Programme (EMPr) Reports for the proposed Gamsberg Smelter Project have been made available for a public review period of 30 days, from 2 October 2020 to 1 November 2020. The Non-Technical Summary attached contains a brief synopsis of the EIA and EMPr in both English and Afrikaans. Due to the Covid-19 pandemic, and according to the Department of Environment, Forestry and Fisheries (DEFF) Guidelines issued on 5 June 2020 restricting the issuing of hard copies into the public domain, the full BAR can be found in the following places for review:

- Project website - <https://slrpublicdocs.datafree.co/public-documents/gamsberg> (which is accessible from internet-capable mobile phones without data charges);
- SLR website - <https://slrconsulting.com/public-documents/gamsberg>; and
- Black Mountain Mining (Pty) Ltd website - <https://www.vedanta-zincinternational.com/sustainability/emprs>.

Please send all comments to SLR (csadan@slrconsulting.com) using the SLR project reference: 720.22013.00002 Gamsberg Smelter Project

Yours faithfully,

**BASIC ASSESSMENT REPORT AND ENVIRONMENTAL MANAGEMENT PROGRAMME REPORT FOR
THE PELLA BULK WATER PIPELINE UPGRADE**

BAR AVAILABLE FOR PUBLIC AND COMMENTING AUTHORITY REVIEW

This is to certify that I


P. VAN HEERDEN (MAYOR KHAIMA MUNICIPALITY)
in my capacity as a representative of

have received the following documents:

PLEASE COMPLETE AND TICK RELEVANT BOX

7 Hardcopy of the Basic Assessment Report and Environmental Management programme Report for the Pella Bulk Water Pipeline Upgrade	✓
9 Hardcopies of the Afrikaans Non-Technical Summary	✓
9 Hardcopies of the English Non-Technical Summary	✓

Date: 11-09-2020


 Signature/ Stamp:
 2020 -09- 11
 MUNICIPALITEIT
 KHAI-MA
 MUNISIPALE BESTUURDER

NON-TECHNICAL SUMMARY
South East Queensland Report
Water Audit Water Planning Upgrade Project

SLR

1. Introduction

The purpose of this report is to provide a summary of the findings of the Water Audit and Water Planning Upgrade Project. The project was undertaken to assess the current water supply and demand in the region and to develop a plan to meet future water needs. The project was completed in 2010 and the findings are presented in this report.



2. Objectives


The objectives of the project were to:

1. Assess the current water supply and demand in the region.
2. Identify the key water supply and demand issues.
3. Develop a plan to meet future water needs.
4. Implement the plan.
5. Monitor and evaluate the plan.

3. Key Findings

The key findings of the project are:

- The current water supply is insufficient to meet future demand.
- There is a need to increase water supply and reduce water demand.
- The plan to meet future water needs includes increasing water supply and reducing water demand.



4. Recommendations

The recommendations of the project are:

1. Increase water supply by developing new water sources.
2. Reduce water demand by implementing water conservation measures.
3. Monitor and evaluate the plan to ensure it is effective.

5. Conclusion

The project has identified the key water supply and demand issues in the region and has developed a plan to meet future water needs. The plan includes increasing water supply and reducing water demand. It is recommended that the plan be implemented and monitored to ensure it is effective.



6. Appendix

The appendix contains the following information:

- Appendix A: List of water supply and demand issues.
- Appendix B: List of water conservation measures.
- Appendix C: List of water supply and demand data.

Issue	Measure	Data
Water supply is insufficient	Develop new water sources	1000 ML
Water demand is high	Implement water conservation measures	500 ML

7. Glossary

The glossary defines the following terms:

- Water supply: The amount of water available for use.
- Water demand: The amount of water required for use.
- Water conservation: The practice of using water efficiently.







NON-TECHNICAL SUMMARY SLR

HOW DO I FIGURE OUT IF I AM AT RISK?

Make sure that you also:

- Check your own risk level
- Check your own risk level
- Check your own risk level

The following information is provided to help you understand the risks associated with the project. It is intended to be a general overview and should not be used as a substitute for professional advice. For more information, please contact the project team.

By taking action, you can help to reduce the risk to your property and the environment.





AGENBAG SUPERMARK

Tel: 054 971 0016



THÜNEMANN
ALCEMENE
PELLA. HANDELAAR



We thank our stakeholders for the confidence they have shown us during the door to door interaction and we shall continue to deliver on all the problems they have identified. We wish to remind the general public to stop sharing fake news which may cause anxiety and panic. Take care and teach others to save a nation. Amanda

EXTRA VIEW + 3RD TV ON ONE PACKAGE
REMOVE AND REINSTALL DISH OVHD INSTALLATIONS
CONTACT PERSON
GEORGE (JORRA)
~~083 245 7592~~ 063441635
083 856 9678

NON-TECHNICAL SUMMARY
Draft Basic Assessment Report
Sluik Water Pipeline Upgrade Project
SLR

5. INTRODUCTION
The Sluik Pipeline Upgrade (SLU) is a critical infrastructure project in the Northern Cape province of South Africa. The project aims to upgrade the existing 100mm diameter pipeline to a 150mm diameter pipeline to improve water supply to the town of Sluik. The project is owned and operated by the Northern Cape Water Services Authority (NCWSA). The project is located in the town of Sluik, approximately 100km north of the town of Pekaia. The project is a capital project with an estimated cost of R10 million. The project is expected to be completed by the end of 2024. The project will provide a reliable water supply to the town of Sluik, which is currently experiencing water shortages. The project will also improve the efficiency of the water supply system and reduce water loss. The project is a key component of the NCWSA's water supply strategy. The project is a priority for the NCWSA and the local community. The project is expected to have a positive impact on the town of Sluik and the surrounding area. The project is a key component of the NCWSA's water supply strategy. The project is a priority for the NCWSA and the local community. The project is expected to have a positive impact on the town of Sluik and the surrounding area.




6. PROJECT DESCRIPTION
The project involves the replacement of the existing 100mm diameter pipeline with a 150mm diameter pipeline. The project also includes the installation of new valves and fittings. The project is located in the town of Sluik, approximately 100km north of the town of Pekaia. The project is a capital project with an estimated cost of R10 million. The project is expected to be completed by the end of 2024. The project will provide a reliable water supply to the town of Sluik, which is currently experiencing water shortages. The project will also improve the efficiency of the water supply system and reduce water loss. The project is a key component of the NCWSA's water supply strategy. The project is a priority for the NCWSA and the local community. The project is expected to have a positive impact on the town of Sluik and the surrounding area.

7. HOW CAN YOU GET INVOLVED?

- Register on the project website: www.slukwaterproject.co.za
- Attend public meetings and displays at the project site
- Email: info@slukwaterproject.co.za
- Telephone: 083 856 9678
- Fax: 083 856 9678
- Write to: Sluik Water Pipeline Upgrade Project, PO Box 100, Sluik, Northern Cape

8. CONTACT PERSON
George (Jorra)
083 856 9678



9. PROJECT CONTACTS

Role	Name	Phone	Email
Project Manager	George (Jorra)	083 856 9678	info@slukwaterproject.co.za
Project Engineer	[Name]	[Phone]	[Email]
Project Surveyor	[Name]	[Phone]	[Email]



10. WHAT ARE THE KEY ENVIRONMENTAL AND SOCIAL ISSUES?

The project is located in a semi-arid environment. The project area is mostly undeveloped land. The project is expected to have a minimal impact on the environment. The project will be implemented in accordance with all applicable laws and regulations. The project will be implemented in a manner that is consistent with the principles of sustainable development. The project will be implemented in a manner that is consistent with the principles of social justice. The project will be implemented in a manner that is consistent with the principles of transparency and accountability. The project will be implemented in a manner that is consistent with the principles of stakeholder engagement. The project will be implemented in a manner that is consistent with the principles of risk management. The project will be implemented in a manner that is consistent with the principles of quality management. The project will be implemented in a manner that is consistent with the principles of safety management. The project will be implemented in a manner that is consistent with the principles of health and safety management. The project will be implemented in a manner that is consistent with the principles of environmental management. The project will be implemented in a manner that is consistent with the principles of social management. The project will be implemented in a manner that is consistent with the principles of governance. The project will be implemented in a manner that is consistent with the principles of leadership. The project will be implemented in a manner that is consistent with the principles of integrity. The project will be implemented in a manner that is consistent with the principles of respect. The project will be implemented in a manner that is consistent with the principles of responsibility. The project will be implemented in a manner that is consistent with the principles of trust. The project will be implemented in a manner that is consistent with the principles of honesty. The project will be implemented in a manner that is consistent with the principles of fairness. The project will be implemented in a manner that is consistent with the principles of equity. The project will be implemented in a manner that is consistent with the principles of justice. The project will be implemented in a manner that is consistent with the principles of peace. The project will be implemented in a manner that is consistent with the principles of harmony. The project will be implemented in a manner that is consistent with the principles of unity. The project will be implemented in a manner that is consistent with the principles of cooperation. The project will be implemented in a manner that is consistent with the principles of collaboration. The project will be implemented in a manner that is consistent with the principles of partnership. The project will be implemented in a manner that is consistent with the principles of shared responsibility. The project will be implemented in a manner that is consistent with the principles of shared success. The project will be implemented in a manner that is consistent with the principles of shared growth. The project will be implemented in a manner that is consistent with the principles of shared prosperity. The project will be implemented in a manner that is consistent with the principles of shared well-being. The project will be implemented in a manner that is consistent with the principles of shared happiness. The project will be implemented in a manner that is consistent with the principles of shared peace and harmony.