









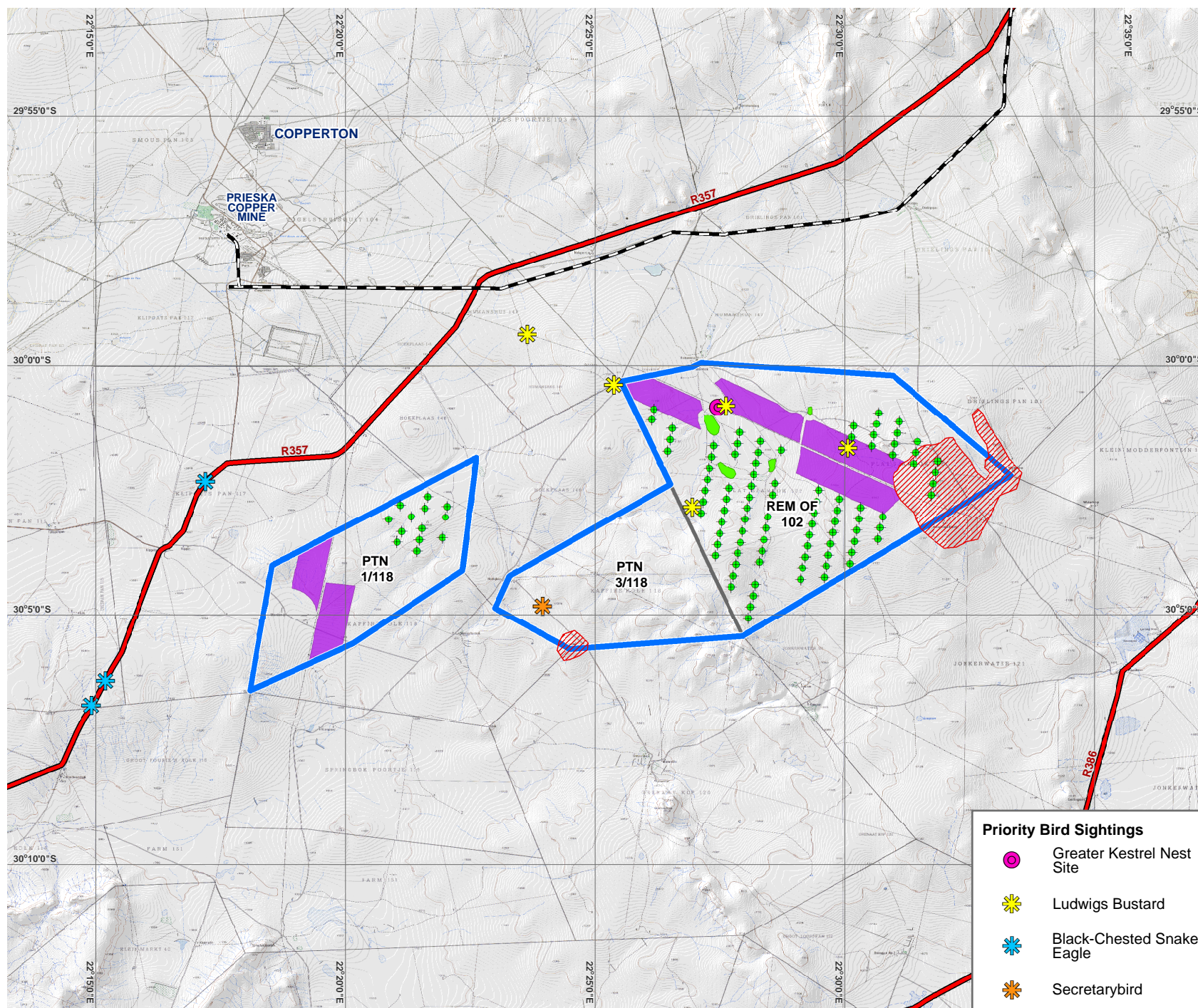
PROPOSED ESTABLISHMENT OF A WINDFARM AND PV PLANT

PRIESKA SITES: NORTHERN CAPE PROVINCE

PRIORITY BIRD SIGHTINGS

Legend

-  Main Roads
-  Railway
-  Cadastral Boundaries
-  Application Site
-  Potential PV Sites
-  Proposed Turbine Layout
-  Sensitive Ridges
-  Sensitive Pans



Priority Bird Sightings

-  Greater Kestrel Nest Site
-  Ludwigs Bustard
-  Black-Chested Snake Eagle
-  Secretarybird

SOURCE: MAINSTREAM RENEWABLE ENERGY, 2011



ENVIRONMENTAL DIVISION
51 WESSELS ROAD
RIVONIA 2128
JOHANNESBURG
SOUTH AFRICA
Phone: +27 11 798 0600
Fax: +27 11 803 7272
e-mail: info@sivest.co.za

Project No	Map Ref No	Prepared By	Date
10777	10777/P_EIA05 (Rev01)	KLS	07/05/2012

"COPYRIGHT IS VESTED IN SIVEST IN TERMS OF THE COPYRIGHT ACT (ACT 98 OF 1978) AND NO USE OR REPRODUCTION OR DUPLICATION THEREOF MAY OCCUR WITHOUT THE WRITTEN CONSENT OF THE AUTHOR"

THIS MAP HAS BEEN PREPARED UNDER THE CONTROLS ESTABLISHED BY THE SIVEST QUALITY MANAGEMENT SYSTEM AND MEETS THE REQUIREMENTS OF THE SETA QUALITY GRADING SYSTEM THAT IS ISO COMPLIANT

